

- Reliable
- Light weight
- Long life
- Customized Solution



**ENGENIUS MACHINERIES
AND SERVICES PVT LTD**

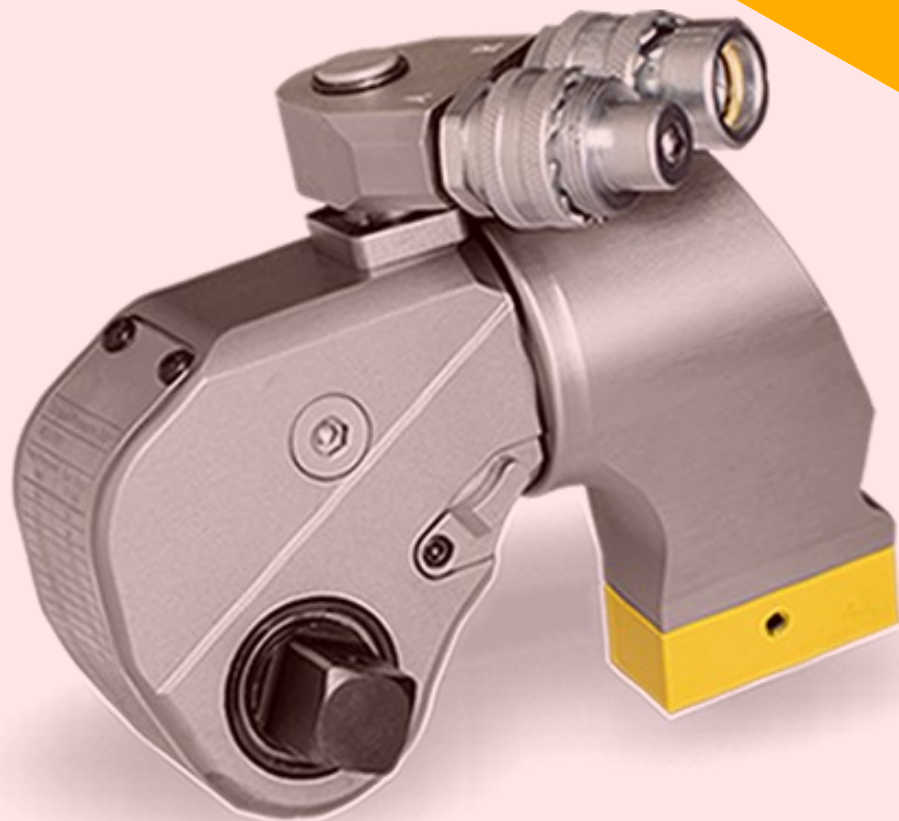
CONTACT NO :- +91 8733881650/8610375128

OUR PRODUCTS

S.NO	PRODUCT NAME
1.	ELECTRIC TORQUE WRENCH A) ANALOG TYPE TORQUE WRENCH B) DIGITAL TYPE TORQUE WRENCH
2	HYDRAULIC TORQUE WRENCH A) SQ DRIVE HYDRAULIC TORQUE WRENCH B) HEX DRIVE HYDRAULIC TORQUE WRENCH
3	HYDRAULIC PUMP
4	IMPACT WRENCH
5	MANUAL WRENCH
6	BACKUP WRENCH
7	COLD CUTTING/PIPE BEVELING MACHINE
8	TORQUE MULTIPLAYER A) VERTICAL TYPE B) HORIZONTAL TYPE
9	NUT SPLEATER
10	FLANGE SPREADER
11	HYFRAULIC HAND PUMP
12	PORTABLE LINE BORING

IBT-SERIES

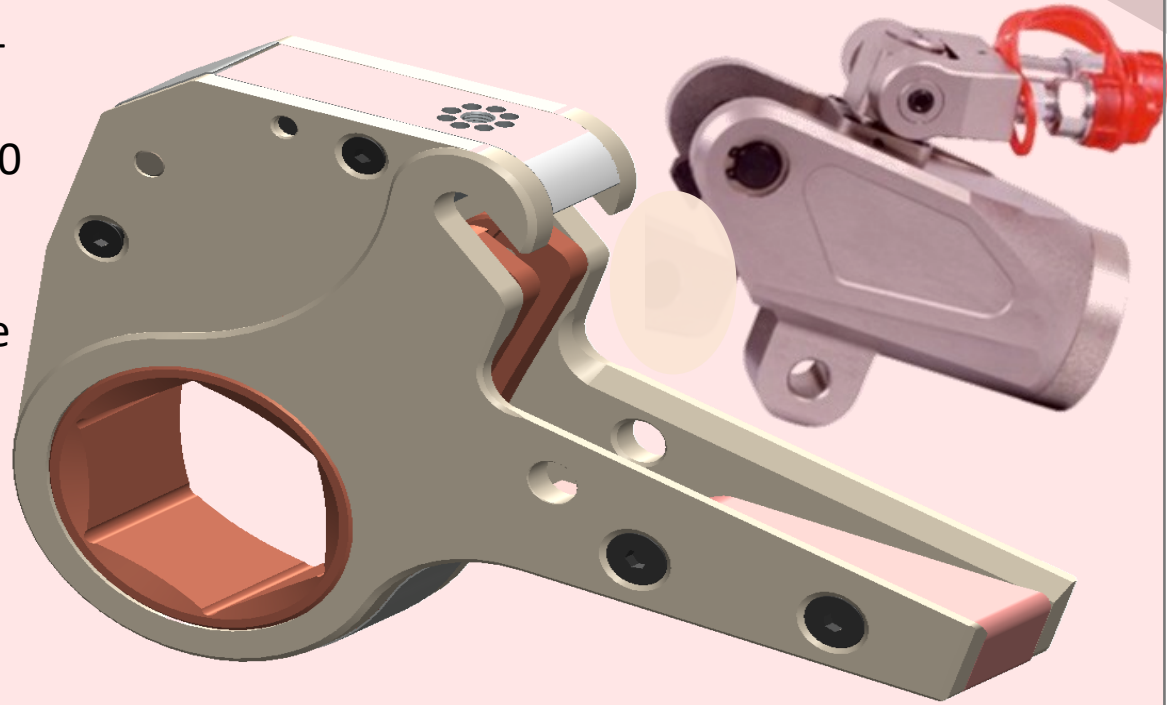
- Working pressure 10000 psi max
- Designed to tighten and loosen nuts requiring high torque
- Constantly repeatable accuracy $\pm 3\%$
- 360° X180° swivel quick release couplings
- Easy replaceable square and hexagon drive adapters



MODEL \ SPECIFICATION	07IBT	1IBT	3IBT	5IBT	8IBT	10IBT	20IBT	25IBT	35IB T	50IBT
TORQUE(NM)	112-1120	183-1837	451-4512	752-7528	1078-10780	1551-15516	2666-26664	3475-34725	4866-48666	7200-72000
BOLT SIZE(M)	14-30	16-36	22-48	27-56	30-64	36-72	42-90	48-100	64-120	72-125
WEIGHT(KG)	1.8	2.5	5	8	11	15	26.5	35	50	87
SQUARE DRIVE	3/4"	3/4"	1"	1-1/2"	1-1/2"	2-1/2"	2-1/2"	2-1/2"	2-1/2"	2-1/2"

LOW SERIES

- 70Mpa max working pressure;
- keep the accuracy $\pm 3\%$
- models with the range from 232-44593N
- 360*180 degree swivel & 360*180 degree swivel
- More accuracy and easier when the wrench direct operate on the nuts.
- Compact design with the raw material of advanced

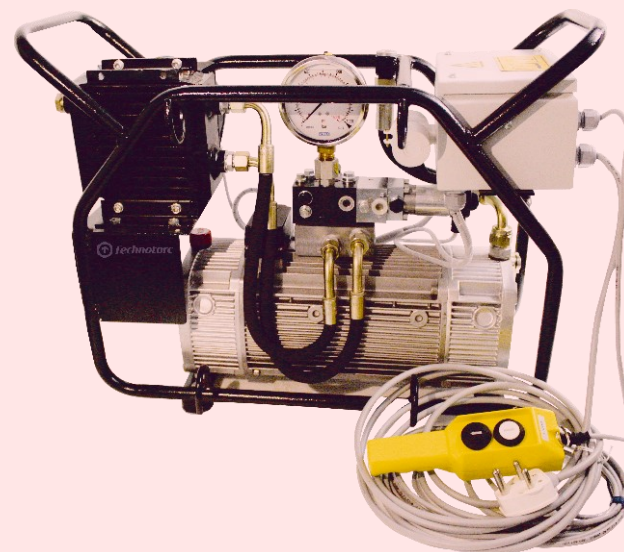


	2LOW	4LOW	8LOW	14LOW	30LOW
TORQE(NM)	232-2328	585-6474	1094-11774	1852-41882	4459-44593
NUT SIZE(M)	19-60	34-80	41-105	50-155	110-175
WEIGHT(KG)	2.7	4.6	11.7	17.1	41.5

HYDRAULIC PUMP

Features :

- EMS Torquing Power pack Incorporated with German Technology which meets Highest Standards of Pump Design and gives you a Pump that is unmatched in Durability, Speed and Performance.
- Heat exchanger is standard included
- A quiet (<75 dBA), lightweight pump with a compact footprint – easy to move around and through the work site
- Durable roll cage with an ergonomically sized handle and shielded gauge – a pump that is easy to put into position and safe from on site operational hazards
- Straightforward operation with a simple pressure set and convenient to use 6 m pendant control – immediate productivity for crews operating the pump
- IP54 Rating for Superior Dust and Water Protection
- Transparent gauge overlays in Bar and Psi for all TECHNOTORC torque wrenches provide a quick torque reference
- Available in 110 V and 230 V versions.



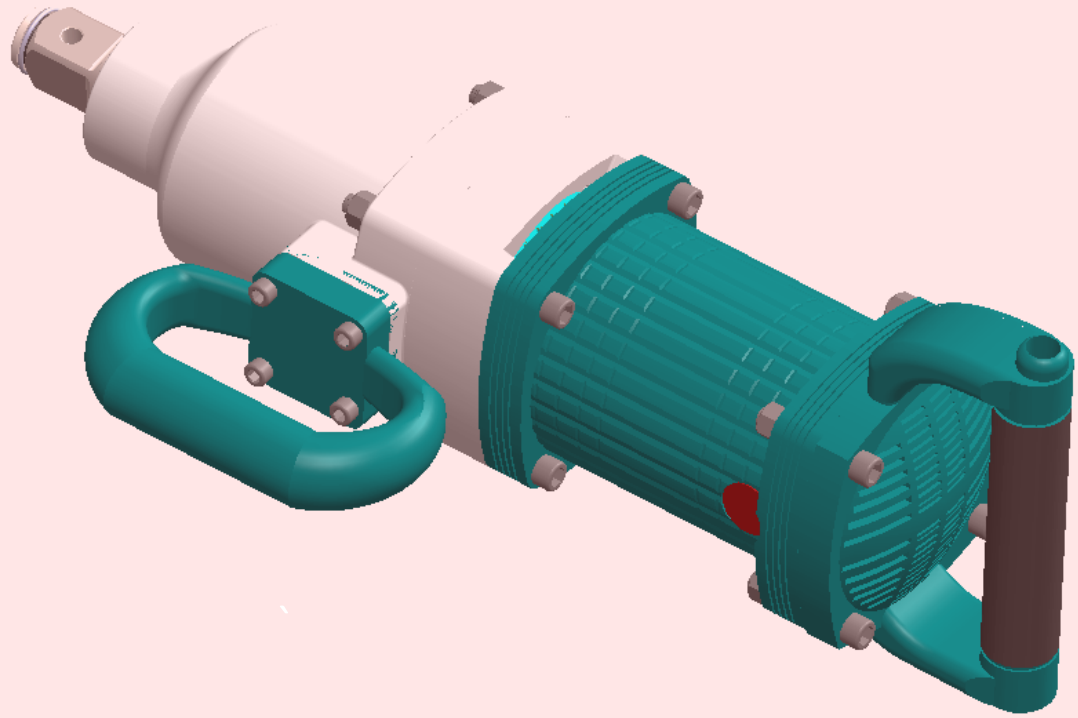
Additional Features :

- 1) Remote control Pendant
- 2) Visual Temperature strips (60° - 90°)
- 3) Visual Off Level Gauge
- 4) Safety Interlocks
- 5) Temperature Interlocks

TECHNICAL SPECIFICATIONS OF TEP - 1000

Main Voltage	AC	230 V, 50 Hz
Motor Capacity	kW / A	1.10 / 7.20
Normal Pressure		700 Max.
Oil Flow rate	Lt./min	9.7 LPM @ 70 bar
		1 LPM @ 700 bar
	Grade	ISO VG 68
Max Oil Temperature	C	60°
Weight Without Oil		38
Protected Acc to	Std.	IP 54
Tank Volume	Ltr.	6 Lit

IMPACT TORQUE WRENCH



del	Power Consumption	Current A	Voltage V	Frequency HZ	Ro speed r/min	Torque	Square drive mm	Applicant	Weight
P12	180W	1	220	50	1200	15-60N.m 11-44ft.lbs	12.7*12.7	M10, M12 3/8", 1/2"	2kg
P16	280W	1	220	50	1300	50-150N.m 37-111ft.lbs	12.7*12.7	M14,M16 9/16", 5/8"	3.8kg
P20	540W	2	220	50	1300	120-220N.m 89-162ft.lbs	19*19	M18,M20 11/18",3/4"	4.3kg
P24	680W	3	220	50	1600	220-400N.m 162-295ft.lbs	19*19	M22,M24 7/8",1"	6.5kg
P30	680W	3	220	50	1600	380-800N.m 280-590ft.lbs	19*19	M27,M30 1.1/8",1.1/4"	6.6kg
P36	1350W	4	380	50	1300	1500N.m 1107ft.lbs	25.4*25.4	M33,M36 1.3/8",1.1/2"	14kg
P42	1500W	5	380	50	1200	2000N.m 1476ft.lbs	25.4*25.4	M40,M42 1.5/8",1.11/16"	18kg



Model	Torque	Square Drive mm	Division Value N.m	Weight	Dimension mm
H25	5-25N.m 3.7-18ft.lbs	9.5*9.5	0.25	0.55	297*33*30
H40	8-40N.m 6-30ft.lbs	9.5*9.5	0.5	0.5	340*33*31
H50	10-50N.m 7-37ft.lbs	19*19	1	1	412*40*40
H100	20-100N.m 15-74ft.lbs	12.7*12.7	1	1	412*40*40
H200	40-200N.m 30-148ft.lbs	12.7*12.7	7.5	2.1	635*48*48
H300	60-300N.m 44-221ft.lbs	19*19	7.5	2.1	635*48*48
H450	150-450N.m 111-332ft.lbs	19*19	10	2.25	635*48*52
H500	100-500N.m 74-369ft.lbs	19*19	10	2.25	635*58*52
H760	140-760N.m 103-561ft.lbs	19*19	10	4.19	835*55*58
H1000	200-1000N.m 148-738ft.lbs	25.4*25.4	12.5	6.0	900*58*58
H2000	750-2000N.m 554-1476ft.lbs	25.4*25.4	25	6.8	1010*69*68
H3000	1000-3000N.m 738-2214ft.lbs	25.4*25.4	25	14.6	1400*84*76
H6000	3000-6000N.m 2214-4428ft.lbs	38*38	100	41	2005*118*100

MAGNETS EMBEDDED

creates a magnetic field force that attracts it to other ferromagnetic materials.

BI-HEXAGONAL DESIGN

provides the ultimate mixture of versatility and durability



HIGH STRENGTH
heavy duty
heat treated
material.

Model	Across Flat (mm)	Across Flat (in)	Load Limits (Nm)
EMS01	30	1-1/4"	3254
EMS02	36	1-7/16"	3390
EMS03	41	1-5/8"	4745
EMS04	46	1-13/16"	4745
EMS05	50	2"	5559
EMS06	55	2-3/16	5694
EMS07	57	2-1/4"	5830
EMS08	60	2-3/8"	5830
EMS09	65	2-9/16"	6169
EMS10	70	2-3/4"	7592
EMS11	75	2-15/16"	8542
EMS12	80	3-1/8"	9491
EMS13	85	3-1/2"	9762
EMS14	90	3-11/16"	9897
EMS15	95	3-7/8"	12202
EMS16	100	4"	32539
EMS17	105	4-1/8"	32539
EMS18	110	4-1/4"	32539
EMS19	115	4-1/2"	33895
EMS20	120	4-5/8"	36607
EMS21	130	5"	36607
EMS22	135	5-3/8"	36607
EMS23	145	5-3/4"	37062

Split frame pipe cutting and beveling machine

- Split frame: easy mounted on pipeline
- Tool feed automatically
- Fast, precision, On-site beveling
- Light weight and compact design
- Easy set-up & Operation
- Driven: Electric or pneumatic or hydraulic



Model			Pipe Capacity OD		wall Thickness		Rotating
Electric	Pneumatic	Hydraulic	mm	inch	mm		rpm
L3	QL3	YL3	Φ20-90	3/8"-3"	30	-	34
L6	QL6	YL6	Φ25-168	1"-6"	30	50	24
L8	QL8	YL8	Φ50-219	2"-8"	30	50	23
L10	QL10	YL10	Φ114-273	4"-10"	30	75	23
L12	QL12	YL12	Φ168-323	6"-12"	30	75	23
L14	QL14	YL14	Φ177-355	8"-14"	30	110	23
L16	QL16	YL16	Φ254-406	10"-16"	30	110	22
L18	QL18	YL18	Φ323-457	12"-18"	30	110	20
L20	QL20	YL20	Φ355-508	14"-20"	30	110	20
L22	QL22	YL22	Φ406-559	16"-22"	30	110	14
L24	QL24	YL24	Φ457-610	18"-24"	30	110	14
L30	QL30	YL30	Φ610-762	24"-30"	30	110	13
L36	QL36	YL36	Φ762-914	30"-36"	30	110	11
L42	QL42	YL42	Φ914-1066	36"-42"	30	110	10
L44	QL44	YL44	Φ980-1160	38"-44"	30	110	9
L48	QL48	YL48	Φ1040-1240	40"-48"	30	110	9
L51	QL51	YL51	Φ1150~1300	45"~51"	≤25	≤110	8
L60	QL60	YL60	Φ1320~1540	52"~60"	≤25	≤110	5
L67	QL67	YL67	Φ1500~1700	59"~67"	≤25	≤110	4
L75	QL75	YL75	Φ1700~1910	67"~75"	≤25	≤110	4
L83	QL83	YL83	Φ1905~2100	75"~83"	≤25	≤110	3
L91	QL91	YL91	Φ2100~2310	83"~91"	≤25	≤110	2

VERTICAL TYPE

Features

- Proven quality
- Suitable for all industrial requirements
- Easy to handle
- Minimal dimensions
- Controlled tightening of bolts with a torque wrench
- Effortless loosening of bolts with only a small amount of force
- Not dependent on power or compressed air
- High-efficiency planetary gear sets achieve high output torque from low input torque
- Most models operator protected by anti-backlash device
- Multiplier output accuracy $\pm 5\%$ of input torque
- Reversible, tighten or loosen bolts
- Reaction bar or reaction plate type
- Reaction plate models offer increased versatility with reaction po

AWUR - Anti Wind up Ratchet



MODEL NO	GEAR RATIO	TORQUE CAPACITY		Height mm	Diameter mm	Weight Kgs	Input Drive in	Output Drive in	Suitable for Bolt Size	
		Ft/lbs	Nm						Bolt Size	A/F
VTM-15	4.5:1	1000	1355	175	80	3	3/4	1	M16-M27	24-41
VTM-25	12:1	1350	1630	310	80	5.2	3/4	1	M20-M30	30-46
VTM-35	15:1	2125	2880	285	80	5.1	3/4	1	M20-M36	30-55
VTM-40	15:1	2360	3200	245	95	6.1	3/4	1.1/2	M20-M39	30-60
VTM-65	21:1	3660	4960	240	114	8.4	3/4	1.1/2	M27-M42	41-65
VTM-90	40:1	5075	6880	300	172	21.5	3/4	1.1/2	M33-M48	50-75

Features and Benefits

- Compact and easy to use
- Single acting, spring return cylinder for fast blade retraction
- Easy to replace blade
- Angled head design for increased clearance

HYDRAULIC TYPE



MANUAL TYPE



Model No	Nut Range (mm)	Oil Capacity (cm ³)	Capacity (ton)	Bolt Range	Weight (kg)
NS-1019	10-19	15	5	M6-12	1.3
NS-1924	19-24	20	10	M12-16	2.2
NS-2432	24-32	60	15	M16-22	3.3
NS-3241	32-41	80	20	M22-27	4.5
NS-4150	41-50	155	35	M27-33	8.5
NS-5060	50-60	240	50	M33-39	12
NS-6075	60-75	492	90	M39-48	34.5
NS-7080	70-80	377	103	M45-52	38
NS-7085	70-85	377	103	M45-56	39
NS-7095	70-95	377	103	M45-64	40
NS-70105	70-105	377	103	M45-72	41
NS-110115	110-115	819	193	M76-80	70
NS-110130	110-130	819	193	M76-90	73

FLANGE SPREADER

- Requires access gap of only 6mm
- Portable tools to safely spread flange joints
- Few moving parts mean durability and low maintenance
- Available for both mechanical and hydraulic options



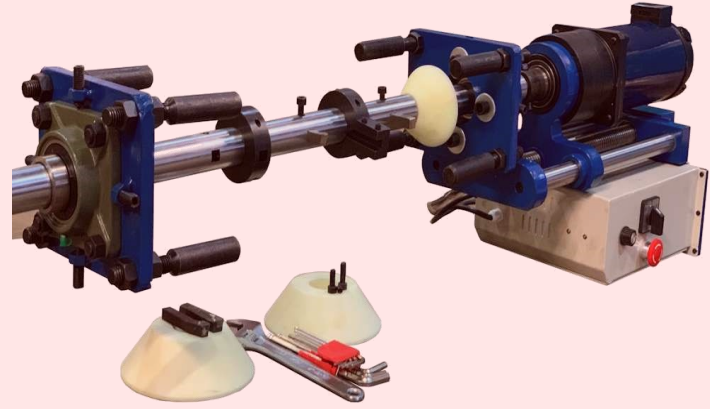
HAND PUMP

FEATURES

- Construction : Alloy steel
- Ground & plated plungers
- Built-in factory set safety relief valve
- Durable polyurethane plunger seal
- Collapsible handle for faster stroke at low pressure
- fast approach to load
- Compatible to all reputed brand jacks



- Precise and accurate boring size
- Smooth and lowest roughness cutting surface
- Easy to carry & install
- Variable applications



S.NO	MODEL NAME		BORING RANGE	WELDING RANGE
	ANALOG TYPE	DIGITAL TYPE		
1	LB16	LB16	50-160 mm	NA
2	LB30	LB30	40-300 mm	40-300 mm
3	LB50	LB50	40-500 mm	40-500 mm
4	LB90	LB90	100-900 mm	100-900 mm
5				

➤ COUSTOMISABLE BORING AND WELDING RANGE ARE AVAILABLE



OUR ADDRESS:

E/37 WEST CHOWBAGA 1ST FLOOR
GULSAN COLONY, NEAR ALI STOR
KOLKATA -700100,WEST BENGAL

CONTACT EMS : SALES & SUPPORT

- M KHAN
- 8733881650
- 9123348860
- EMAIL:
info@emsindia.org.in
- WEB:
www.emsindia.org.in

