



2026

**UNDERGROUND
CATALOG**

TABLE OF CONTENTS

Polymer Concrete Handholes.....	4
Fiberglass Handholes.....	5
Polymer Concrete/Fiberglass Handhole Accessories.....	5
H-20 Handholes.....	6
H-20 Handhole Accessories.....	6
HDPE Handholes.....	7
HDPE Handhole Accessories.....	7
Pedestals.....	7
Smooth Wall HDPE Conduit.....	8
UL-Listed Conduit.....	8
Tracer Wire Conduit.....	9
Maxcell Edge.....	9
Maxcell Edge Detectable.....	10
Couplers.....	10
Innerduct Pulling Eyes.....	11
Lubricants.....	11
PVC Stick Conduit Belled.....	12
PVC Stick Conduit Elbows & Sweeps Belled.....	12
PVC Stick Conduit Spacers & Accessories.....	13
Microduct.....	13
Tracer Wire.....	14
Underground Warning Tape.....	14
Pull Tape.....	15
Polydomes & Fiberglass Markers.....	15

Polymer Concrete Handholes

OVERVIEW

Polymer concrete handholes are lightweight, high-strength enclosures that protect underground electrical and communications utilities. They resist corrosion and harsh environments while offering excellent load capacity, fast installation, and long service life.

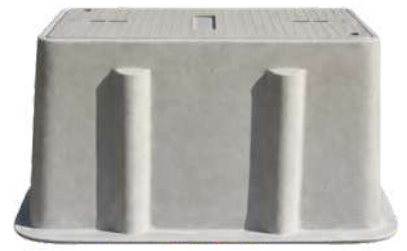


Part Number	Dimensions	Tier Rating	Base w/Lid Weight
AP-060806PxxH-xx	6" x 8" x 6"	15 & 22	18 LBS
AP-060812PxxH-xx	6" x 8" x 12"	15 & 22	30 LBS
AP-111812PxxH-xx	11" x 18" x 12"	15 & 22	69 LBS
AP-111818PxxH-xx	11" x 18" x 18"	15 & 22	89 LBS
AP-121212PxxH-xx	12" x 12" x 12"	15 & 22	47 LBS
AP-132412PxxH-xx	13" x 24" x 12"	15 & 22	105 LBS
AP-132418PxxH-xx	13" x 24" x 18"	15 & 22	129 LBS
AP-132424PxxH-xx	13" x 24" x 24"	15 & 22	160 LBS
T-APC173012T22	17" x 30" x 12"	22	148 LBS
T-APC173018T22	17" x 30" x 18"	22	185 LBS
T-APC173024T22	17" x 30" x 24"	22	202 LBS
T-APC242424T22	24" x 24" x 24"	22	238 LBS
T-APC243618T22	24" x 36" x 18"	22	248 LBS
T-APC243624T22	24" x 36" x 24"	22	270 LBS
T-APC243630T22	24" x 36" x 30"	22	315 LBS
T-APC243636T22	24" x 36" x 36"	22	345 LBS
T-APC243648T22	24" x 36" x 48"	22	460 LBS
T-APC270036T22	27" x 36"	22	358 LBS
T-APC270048T22	27" x 48"	22	392 LBS
T-APC304818T22	30" x 48" x 18"	22	404 LBS
T-APC304824T22	30" x 48" x 24"	22	448 LBS
T-APC304836T22	30" x 48" x 36"	22	558 LBS
T-APC306024T22	30" x 60" x 24"	22	750 LBS
T-APC306036T22	30" x 60" x 36"	22	948 LBS
T-APC363636T22	36" x 36" x 36"	22	500 LBS
T-APC366024T22	36" x 60" x 24"	22	745 LBS
T-APC366036T22	36" x 60" x 36"	22	970 LBS
T-APC484836T22	48" x 48" x 36"	22	812 LBS
T-APC484848T22	48" x 48" x 48"	22	945 LBS
T-APC486048T22	48" x 60" x 48"	22	1,900 LBS
T-APC489648T22	48" x 96" x 48"	22	2,350 LBS

Fiberglass Handholes

OVERVIEW

Fiberglass handholes are strong, lightweight underground access enclosures designed to protect electrical, telecom, and utility connections. They offer excellent resistance to corrosion, moisture, and harsh environmental conditions while providing long-lasting durability and easy installation across a wide range of applications.



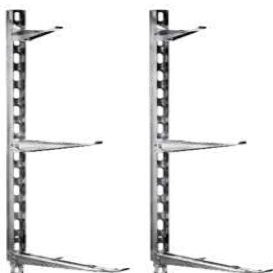
Part Number	Dimensions	Tier Rating	Base w/Lid Weight
T-AFG101512Txx	10" x 15" x 12"	8 & 15	46 LBS
T-AFG101518Txx	10" x 15" x 18"	8 & 15	53 LBS
T-AFG111812Txx	11" x 18" x 12"	8 & 15	55 LBS
T-AFG132412Txx	13" x 24" x 12"	8 & 15	89 LBS
T-AFG132418Txx	13" x 24" x 18"	8 & 15	104 LBS
T-AFG173012Txx	17" x 30" x 12"	8 & 15	137 LBS
T-AFG173018Txx	17" x 30" x 18"	8 & 15	143 LBS
T-AFG173024Txx	17" x 30" x 24"	8 & 15	159 LBS
T-AFG243618Txx	24" x 36" x 18"	8 & 15	254 LBS
T-AFG243624Txx	24" x 36" x 24"	8 & 15	267 LBS
T-AFG243636Txx	24" x 36" x 36"	8 & 15	293 LBS
T-AFG304824Txx	30" x 48" x 24"	8 & 15	398 LBS
T-AFG304836Txx	30" x 48" x 36"	8 & 15	428 LBS

Polymer Concrete/Fiberglass Handhole Accessories

OVERVIEW

Lid Markers, Cable Racking, Steel Lids, and Handhole Dividers work together to improve the safety and reliability of underground utility systems. Lid markers provide clear, durable identification, cable racking keeps cables organized and protected, and steel lids offer high-strength, secure coverage for demanding environments.

Available Upon Request



Cable Racks



Lid Markers



Steel Lids



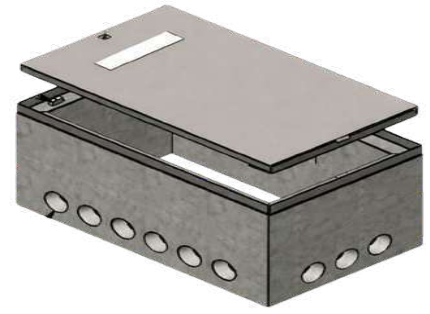
Handhole Divider

H-20 Handholes

OVERVIEW

H-20 handholes are heavy-duty underground enclosures designed to withstand traffic loading, making them ideal for roadways and parking areas while protecting utility and telecom connections.

- Includes Pentahead Bolts, Box, Galv. Stl Cover & Frame



Part Number Breakdown

Example: FHR-18-24-24

- Available in 12, 18, 24, 30 and 36" Depths

U-FHR-

Outside Length

-

Outside Width

-

Depth

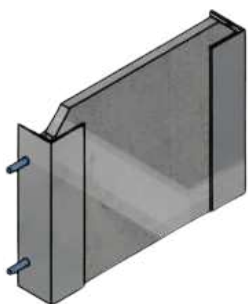
Outside L x W	Inside L x W
18" x 18" (18-18)	12" x 12"
18" x 24" (18-24)	12" x 18"
18" x 30" (18-30)	12" x 24"
18" x 36" (18-36)	12" x 30"
24" x 24" (24-24)	18" x 18"
24" x 30" (24-30)	18" x 24"
24" x 36" (24-36)	18" x 30"
30" x 30" (30-30)	24" x 24"
30" x 36" (30-36)	24" x 30"
30" x 48" (30-48)	24" x 42"

H-20 Handhole Accessories

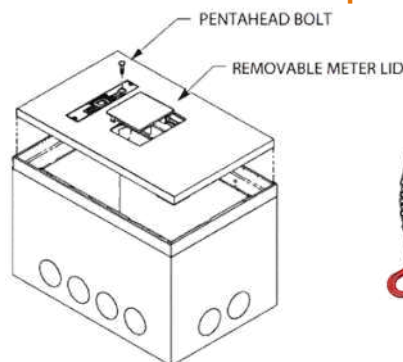
OVERVIEW

H-20 handhole accessories include FHR dividers, meter lid options, 4-way lift chains, and lid markers designed to improve strength, organization, and safe access. These options enhance functionality, simplify maintenance, and support clear identification in high-traffic installations.

Available Upon Request



FHR Divider



Meter Lid Options



4-Way Lift Chain



Lid Markers

HDPE Handholes

OVERVIEW

HDPE handholes are lightweight, durable underground enclosures that protect electrical, telecom, and utility connections while resisting corrosion, moisture, and impact.



Part Number	Style	Weight Rating	Locking Style
U-HH-P68	6" Flower Pot	ASTM C857 Pedestrian	Twist Lock
U-HH-P79	7" Flower Pot	ASTM C857 Pedestrian	Snap Lock
U-HH-P109	10" Flower Pot	ASTM C857 Pedestrian	Twist Lock
U-HH-P111612	11" x 16" x 12"	ASTM C857 Pedestrian	Hex Bolt
U-HH-P152012	15" x 20" x 12"	ASTM C857 Pedestrian	Hex Bolt
U-HH-P173018	17" x 30" x 18"	ASTM C857 Pedestrian	Hex Bolt
U-HH-T22173024	17" x 30" x 24"	Tier 22	Hex Bolt
U-HH-T22243624	24" x 36" x 24"	Tier 22	Hex Bolt

HDPE Handhole Accessories

OVERVIEW

HDPE handhole accessories include Multiple color options, EMS markers, and Custom lid markings to improve identification, safety, and system organization. These accessories enhance visibility, help prevent utility damage, and allow clear labeling for faster access and easier maintenance.

Available Upon Request



Multiple Color Options



EMS Markers



Lid Markings

Pedestals

OVERVIEW

Pedestals are above-ground enclosures used to house and protect electrical, telecom, and utility connections while providing convenient access for maintenance and service. Designed for durability and weather resistance, they help organize equipment, improve visibility, and support safe, reliable system operation in outdoor environments.



Part Number	Style
U-UP-1018-KIT-1	Flowerpot Pedestal w/42" Stake & Mounting Hardware
U-UP-PED-1212	12" x 12" x 39.5" Traditional Pedestal

Smooth Wall HDPE Conduit

OVERVIEW

Smooth wall HDPE conduit is a flexible, lightweight piping solution used to protect and route electrical, telecom, and fiber optic cables. Made from high-density polyethylene, it offers excellent resistance to corrosion, moisture, chemicals, and impact, while its smooth interior reduces friction for easier cable pulling and long-term system reliability.



-Ribbed Conduit & Other Color Options Available Upon Request

-0.75" - 2" Diameter Available In ETL Listed To UL 651A Used Per NEC Article 353 In EPEC-B/SDR 13.5, EPEC-40/Schedule 40, Or EPEC-80/Schedule 80

Part Number Breakdown

Example: U-SW-7-75-Y-O



Durability Rating	Diameter	Pre-Installed Tape	Color
7 (7-)	.75" (75-)	With Pull Tape (Y-)	Orange (O)
7.3 (73-)	1" (1-)	Without Pull Tape (N-)	Black (B)
9 (9-)	1.25" (125-)		
11 (11-)	1.5" (15-)		
13.5 (135-)	2" (2-)		
15.5 (155-)	2.5" (25-)		
17 (17-)	3" (3-)		
	4" (4-)		
	6" (6-)		

UL-Listed Conduit

OVERVIEW

UL-listed conduit is a durable EPEC conduit designed to protect tracer wire used for locating underground utilities. It meets UL safety standards and provides reliable resistance to moisture, corrosion, and environmental stress, ensuring long-term performance.



-Smooth Wall Available Upon Request

Part Number Breakdown

Example: U-UCL-4040-2-Y-B



Durability Rating	Diameter	Pre-Installed Tape	Color
EPEC-B/SDR 13.5 (135-)	.75" (75-)	With Pull Tape (Y-)	ASTM D-3350 UV Black (B)
EPEC-40/SCH 40 (4040-)	1" (1-)	Without Pull Tape (N-)	
EPEC-80/SCH 80 (8080-)	1.25" (125-)		
	1.5" (15-)		
	2" (2-)		
	2.5" (25-)		
	3" (3-)		
	4" (4-)		

Tracer Wire Conduit

OVERVIEW

Tracer wire conduit is a protective pathway designed to house tracer wire for locating underground utilities. It helps shield the wire from damage, moisture, and environmental exposure, ensuring reliable utility identification and long-term performance.



-Smooth Wall & All Colors Available Upon Request

-Standard 18 AWG; Other Gauges Available Upon Request.

Part Number Breakdown

Example: U-TWC-11-15-Y-O



Durability Rating	Diameter	Pre-Installed Tape	Color
SDR 11 (11-)	1" (1-)	With Pull Tape (Y-)	Orange (O)
SDR 13.5 (135-)	1.25" (125-)	Without Pull Tape (N-)	Black (B)
	1.5" (15-)		
	2" (2-)		

Maxcell Edge

OVERVIEW

Maxcell Edge is a fabric innerduct system used to organize, protect, and separate multiple cables within a single conduit. Its flexible design maximizes usable space, reduces cable congestion, and allows for easy installation and future cable additions without the need for new conduit.



Part Number Breakdown

Example: U-ME-15-3-14



Min Conduit Inside Diameter	Cells	Max Cable Size Per Cell
1.25" (125-)	1 (1-)	12mm (12)
1.5" (15-)	2 (2-)	14mm (14)
1.75" (175-)	3 (3-)	18mm (18)
2" (2-)	4 (4-)	22mm (22)
3" (3-)		28mm (28)
4" (4-)		38mm (38)

Maxcell Edge Detectable

OVERVIEW

Maxcell Edge Detectable is a fabric innerduct system with integrated detectable technology that allows underground pathways to be easily located. It organizes and protects multiple cables within a conduit while improving visibility for future locating, maintenance, and damage prevention.



Part Number Breakdown

Example: U-MED-2-3-22



Min Conduit Inside Diameter	Cells	Max Cable Size Per Cell
1.25" (125-)	1 (1-)	12mm (12)
1.75" (175-)	2 (2-)	18mm (18)
2" (2-)	3 (3-)	22mm (22)
3" (3-)	4 (4-)	28mm (28)
4" (4-)		38mm (38)

Couplers

OVERVIEW

Conduit couplers are fittings used to securely join sections of conduit together, creating a continuous and protected pathway for cables. They help maintain alignment, strength, and system integrity while supporting safe, reliable cable installation.



Part Number Breakdown

Example: U-CP-CC-2



Type	Size
Redi-Lock (RL-)	0.75" (75")
Clear-Lock (CL-)	1" (1)
E-LOC (EL-)	1.25" (125)
Compression Coupler (CC-)	1.5" (15)
Aluminum Threaded (AT-)	2" (2)
Shur-Lock (SL-)	2.5" (25)
Split-Lock (SPL-)	3" (3)
Double E-LOC (DE-)	4" (4)
E-LOC Plus (EP-)	6" (6)

Innerduct Pulling Eyes

OVERVIEW

Innerduct pulling eyes are installation accessories used to safely pull innerduct through conduit during installation. They provide a secure attachment point for pulling equipment, helping reduce stress on the innerduct and ensuring a smooth, controlled pull.



Part Number	Nominal Duct Diameter	Max Pulling Eye Duct Dia.	Swivel
U-PE-118-15-Y	1 in & 1-1/8 in	1.5"	Yes
U-PE-138-175-Y	1-1/4 in & 1-3/8 in	1.75"	Yes
U-PE-15-2-Y	1-1/2 in	2"	Yes
U-PE-2-25-Y	2 in	2.5"	Yes
U-PE-118-15-N	1 in & 1-1/8 in	1.5"	No
U-PE-138-175-N	1-1/4 in & 1-3/8 in	1.75"	No
U-PE-15-2-N	1-1/2 in	2"	No
U-PE-2-25-N	2 in	2.5"	No

Lubricants

OVERVIEW

Conduit lubricants are specially formulated to reduce friction during cable and innerduct installation. They help protect cables from damage, allow smoother pulls, and improve efficiency in both underground and above-ground conduit systems.



Part Number Breakdown

Example: U-IL-JL-1G

U-IL- **Type** - **Size**

Type	Size
J Lubricant (JL-)	1 Quart (1Q)
F Lubricant (FL-)	1/2 Gallon (12G)
PJ Lubricant (PJ-)	1 Gallon (1G)
NN Lubricant (NN-)	
LZ Lubricant (LZ-)	
SPY Sprayable Lubricant (SPY-)	
CPL Pourable Lubricant (CPL-)	
CGL Lubricant (CGL-)	
CLR Lubricant (CLR-)	
FTTx Lubricant (FTT-)	
CableFree Loosener (CF-)	
GrandSlam Pipe Joint Lubricant (GS-)	
Dyna-Blue Cable Lubricant (DB-)	
Prelube 2000 Cable Blowing Lubricant (PL-)	
LP-D5 Lubricant Pump (LP-)	

PVC Stick Conduit Belled

OVERVIEW

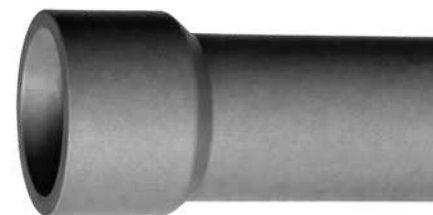
PVC Stick Conduit is a lightweight, rigid PVC conduit used to protect and route electrical wiring. It is corrosion-resistant, non-conductive, and suitable for indoor or outdoor installations.

-One Belled End

Part Number Breakdown

Example: U-SC-120-3

U-SC- **Type** - **Size**



Type	Size
EB-20 (20-)	0.5" (05-)
EB-35 (35-)	0.75" (75-)
DB-60 (60-)	1" (1-)
DB-120 (120-)	1.25" (125-)
Special CA Type DB-100 (100-)	1.5" (15-)
Schedule 40 (40-)	2" (2-)
Schedule 80 (80-)	2.5" (25-)
	3" (3-)
	3.5" (35-)
	4" (4-)
	5" (5-)
	6" (6-)

PVC Stick Conduit Elbows & Sweeps Belled

OVERVIEW

PVC Stick Conduit is a lightweight, rigid PVC conduit used to protect and route electrical wiring. It is corrosion-resistant, non-conductive, and suitable for indoor or outdoor installations.

-Sweeps 72" And Larger May Be Shipped In Segments

-One Belled End

Part Number Breakdown

Example: U-SCS-60-2-30-48

U-SCS- **Type** - **Size** - **Angle** - **Radius**



Type	Size	Angle	Radius
DB-60 Sweeps (60-)	0.5" (05-)	11.25° (125-)	12" (12)
DB-120 Sweeps (120-)	0.75" (75-)	22.5° (225-)	18" (18)
DB-100 Sweeps (100-)	1" (1-)	30° (30-)	24" (24)
Schedule 40 (40-)	1.25" (125-)	45° (45-)	30" (30)
Schedule 80 (80-)	1.5" (15-)	90° (90-)	36" (36)
	2" (2-)		48" (48)
	2.5" (25-)		60" (60)
	3" (3-)		72" (72)
	3.5" (35-)		120" (120)
	4" (4-)		144" (144)
	5" (5-)		180" (180)
	6" (6-)		300" (300)

PVC Stick Conduit Accessories

OVERVIEW

We offer a complete line of PVC conduit fittings, accessories, and installation products designed to support secure, organized, and code-compliant electrical installations across residential, commercial, and industrial applications.



*** Available Upon Request ***

Standard Couplings, Female Adapters, Terminal Adapters, Miscellaneous Couplings, Expansion Couplings, Reducers, Box Adapters, Pipe Caps, Conduit Clamps, Plugs, Offsets, End Bells, Junction Boxes, Meter Risers, Pull Elbows, Service Entrance Caps, Washers, Swedged Adapters, Access Fittings, Switch Boxes, Slip Meter Risers, Spacers, DB & EB Duct Fittings, Telephone Duct Fittings, William H. Harvey PVC Cement, Conduit Installation Instructions For Cementing Joints, Split Duct, And Split Kits.

Microduct

OVERVIEW

Microduct is made from high-quality HDPE for indoor and outdoor use, featuring smooth or ribbed low-friction interiors for efficient fiber installation. It offers UV protection and customizable colors

- 80mm Max Bundle Diameter
- Combinations Of Diameters Available
- Custom Combinations Available

Part Number Breakdown

Example: U-MD-84-3

U-MD-

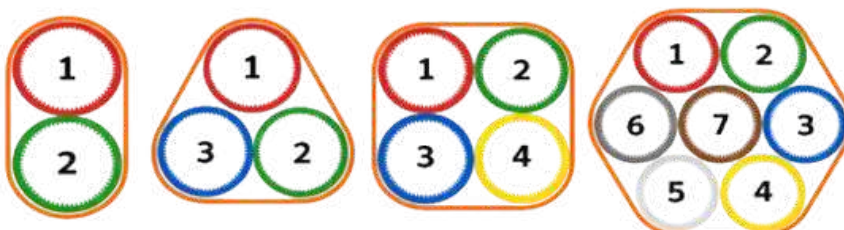
**Wall Type
& Size**

-

**Number
Of Ways**



Thick Wall Sizes	Thin Wall Sizes	Number Of Ways
7 / 3.5mm (735-)	5 / 3.5mm (535-)	1 (1)
8 / 4mm (84-)	7 / 4mm (74-)	2 (2)
10 / 6mm (106-)	10 / 8mm (108-)	3 (3)
12 / 8mm (128-)	12 / 10mm (1210-)	4 (4)
14 / 10mm (1410-)	14 / 12mm (1412-)	7 (7)
16 / 12mm (1612-)		8 (8)
20 / 16mm (2016-)		10 (10)
		12 (12)
		19 (19)
		48 (48)



Tracer Wire

OVERVIEW

Tracer wire provides a reliable means of locating underground utilities, offering high conductivity, corrosion resistance, and durable insulation for long-term buried applications.

-Custom Printing Legends Available

-Direct Burial Rated

Part Number Breakdown

Example: U-TW-CSR-12-O

U-TW- **Type** - **Gauge** - **Color**



Type	Gauge	Color
Copper Clad Steel (CCS)	#18 AWG Solid Conductors (18-)	White (W)
Stainless Steel (SS)	#16 AWG Solid Conductors (16-)	Pink (P)
Copper Clad Steel High Strength (CHS)	#14 AWG Solid Conductors (14-)	Red (R)
Copper Clad Steel Stress Relieved (CSR)	#12 AWG Solid Conductors (12-)	Yellow (Y)
Copper Clad Steel Pipe Burst (CPB)	#10 AWG Solid Conductors (10-)	Orange (O)
	#8 AWG Solid Conductors (8-)	Blue (B)
		Purple (PR)
		Green (G)

Underground Warning Tape

OVERVIEW

Underground markers provide a permanent, visual warning and identification system for buried utilities, helping prevent accidental damage during excavation and ensuring long-term durability in underground environments.

Part Number Breakdown

Example: U-WT-D6-O

U-WT- **Size** - **Color**

Size	Color
Detectable 3" x 1,000' (D3-)	Red (R)
Detectable 6" x 1,000' (D6-)	Blue (B)
Non-Detectable 3" x 1,000' x 4mil (N34-)	Orange (O)
Non-Detectable 6" x 1,000' x 4mil (N64-)	White (W)
Non-Detectable 3" x 1,000' x 6mil (N36-)	Green (G)
Non-Detectable 6" x 1,000' x 6mil (N66-)	Yellow (Y)
	Purple (P)

	RED Electrical Power Lines & Cables Used to identify buried electrical utilities and power infrastructure.
	BLUE Water Lines – Potable Water Marks drinking water distribution systems and supply lines.
	ORANGE Communications & Alarm Lines Indicates telephone, fiber optic, cable TV, and alarm systems.
	WHITE Proposed Excavation / General Construction Used for planned excavation routes and temporary construction markings.
	GREEN Sewer & Drain Lines Identifies sanitary sewer systems and storm drainage lines.
	YELLOW Gas, Oil & Petroleum Marks natural gas, oil, steam, and other flammable materials.
	PURPLE Reclaimed Water, Irrigation & Slurry Lines Used for non-potable water systems, reclaimed water, and slurry pipelines.

Pull Tape

OVERVIEW

Pull tape is a high-strength, low-stretch pulling aid used to safely and efficiently install cables in conduit, featuring durable construction and clear footage markings for accurate pulls.

-For Cable Installation Only. Do Not Strap, Bind Or Lift Items With This Product.

Part Number Breakdown

Example: U-PT-HDT-750-60

U-PT- **Type** - **Width** - **Load Rating**



Type	Width	Load Rating
Standard Tape (ST)	0.438" (438-)	1,250 Lbs (12)
Heavy Duty Tape (HDT)	0.500" (5-)	1,800 Lbs (18)
	0.625" (625-)	2,500 Lbs (25)
	0.688" (688-)	3,300 Lbs (33)
	0.750" (750-)	4,000 Lbs (40)
		6,000 Lbs (60)

Polydomes & Fiberglass Markers

OVERVIEW

Polydomes & Fiberglass Markers provide durable, above-ground identification and protection for underground utilities, offering high visibility, weather resistance, and long-lasting performance in all environmental conditions.

Part Number Breakdown

Example: U-PM-PD-6-O

U-PM- **Unit Type** - **Size** - **Color**



Unit Type	Size	Color
Polydomes (PD-)	4 Ft (4-)	Black (B)
Polydome Test Station (PS-)	5.5 Ft (55-)	Orange (O)
Top Hat Test Station (TH-)	6 Ft (6-)	Red (R)
Pop Up Polydome (PU-)	6.5 Ft (65-)	Yellow (Y)
Polydome Quick Mount (QM-)	7 Ft (7-)	Blue (B)
At Grade Test Stations (AG-)	8 Ft (8-)	Green (G)
Fiberglass Line Marker (FM-)	10 Ft (10-)	Purple (PR)
		White (W)

