

GWM



TANK
500

LUXURY OFF-ROAD SUV



PERFORMANCE

FEATURES



Performance

Feel the thrill with 2.0L Turbo Hybrid Engine, delivering an impressive 342 HP / 648 Nm and propelling you from 0-100 in a mere 7.9 seconds.

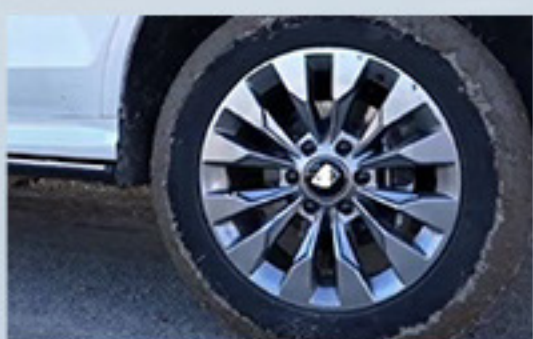
Paired with the seamless performance of our 9AT Automatic Hybrid Transmission, every moment behind the wheel promises a refined blend of power, precision, and comfort at every speed.

Intelligent Technology

Dominate all terrains with GWM Intelligent 4WD Technology. Offering an impressive array of 11 drive modes coupled with a Triple Lock mechanism including Front Lock, Rear Lock, and 4L, ensuring unparalleled control and confidence everywhere you go.



Crawl Control



Tank Turn



Expert Mode



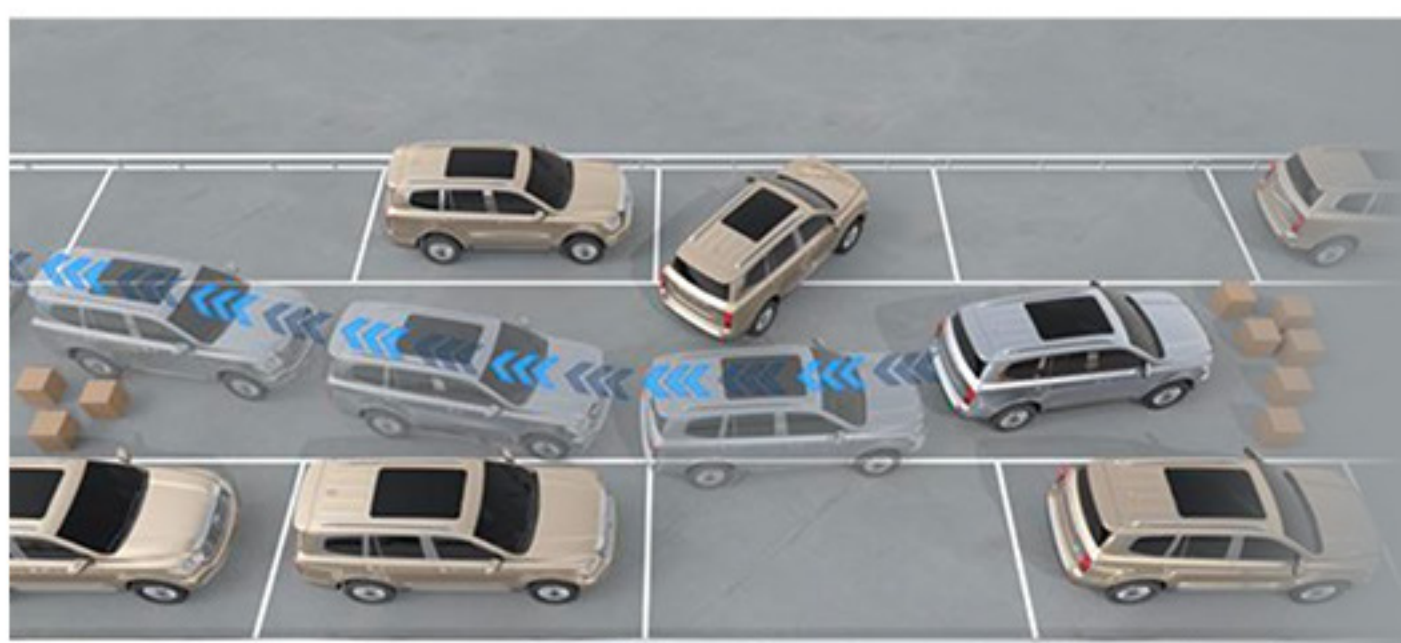
INTELLIGENT
TECHNOLOGY

FEATURES



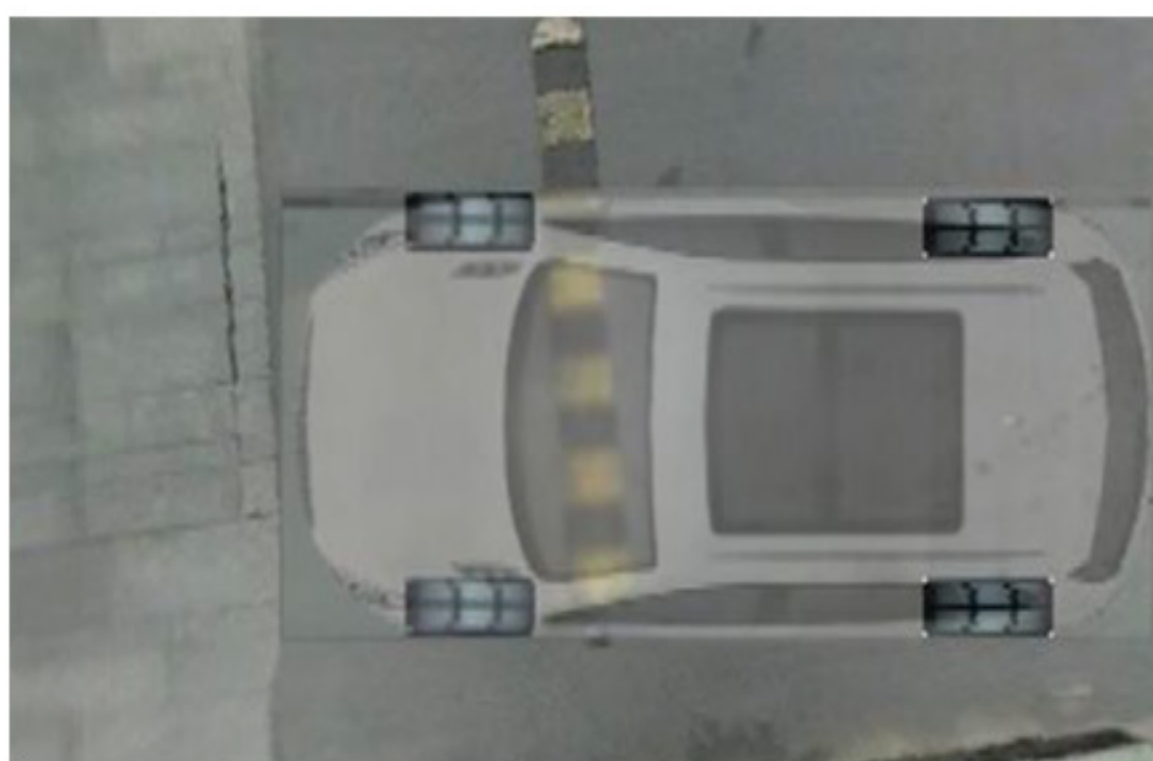
Integrated Intelligent Parking

Park automatically with the help of the help of our state-of-the-art Surround Vision and Collision Avoidance Radar System. Utilizing cutting-edge radar sensors and cameras, it seamlessly detects obstacles and parking lines, identifies optimal parking spots, and autonomously manages steering, gear shifting, and braking operations for a stress-free parking experience.



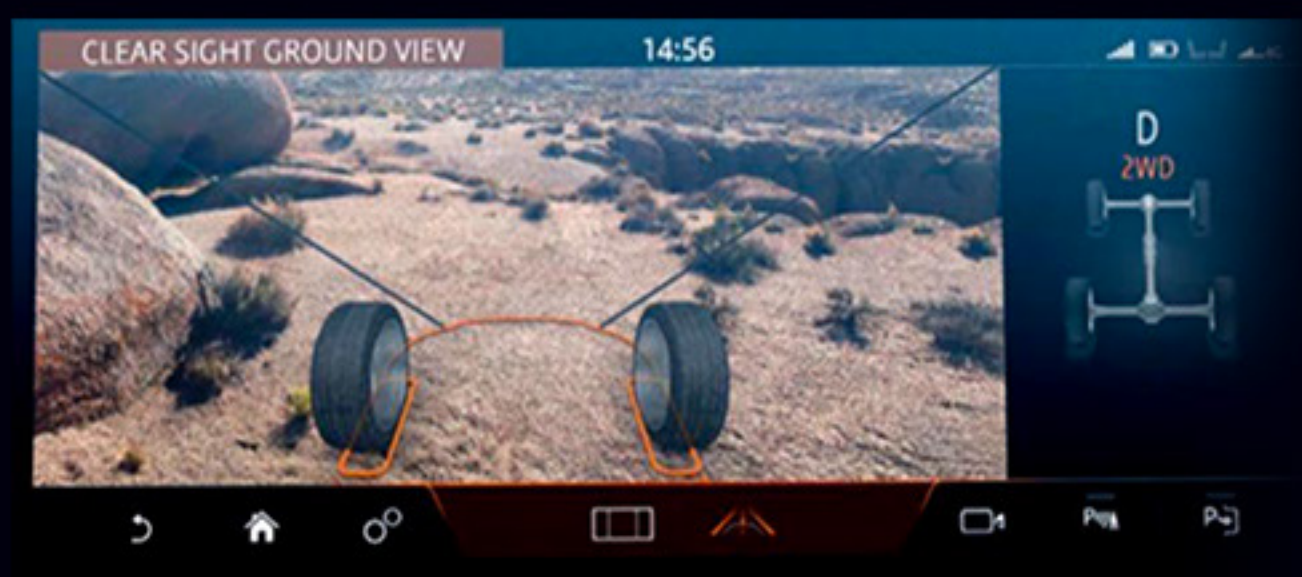
Track Reversing

Track back your trails with our Track Reversing feature. Seamlessly integrated into gear D, it memorizes your last 50 meters of forward movement, allowing you to effortlessly navigate back to your starting point with unparalleled ease. The system takes command of steering, braking, and throttle, ensuring an effortless return along your recorded route.



Transparent Chassis

Experience unparalleled visibility of your surroundings with our advanced panoramic view system, designed to memorize the imagery of the driving environment. The system seamlessly integrates ground video information with real-time road positioning, offering a comprehensive view of the terrain under the car and ensuring enhanced safety and confidence on every journey.



Conqueror's perspective

Enhance your off-road experience with our innovative front body camera, eliminating blind spots and providing a clear view of previously hidden roads. Enjoy safer and more convenient off-road journeys with improved uphill visibility.



COMFORT
LUXURY

FEATURES



Automatic Electric Side-step



Intelligent Easy Entry + auto tilt steering



Electric Tilt-telescopic steering



Rear cabin AC + ventilated seat control



Electric Panoramic Sunroof



Electric Seat with 3 memory function + Massage



Nappa Leather Seats

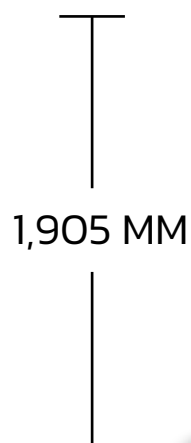
Experience redefined luxury with GWM TANK 500 exquisite Nappa leather seats. Crafted with precision and care, each seat undergoes an extensive 58-step, 30-day process to preserve the natural texture and softness. Rigorously tested through 50 performance evaluations, including 2000 abrasion resistance tests and 14 days of mildew resistance testing under 40°C temperatures, our seats ensure unparalleled durability and comfort for everyone onboard



Infinity Sound System

Dive into a symphony of sound with the Infinity 12-speaker sound system, delivering exceptional high-fidelity music enjoyment everywhere you go.

SPECIFICATION



DIMENSION

- Length and Width 5,078 x 1,934 mm.
- Height 1,905 mm.
- Wheelbase 2,850 mm.
- Distance between front & rear wheels 1,635 / 1,635 mm.
- Ground clearance 224 mm.
- Water wading capacity 800 mm.
- Fuel tank capacity 75 liters

ENGINE

- Gasoline variable-geometry turbocharger (VGT)
- Injection type: direct injection
- Engine displacement 1,998 cc
- Max. engine power 180 (244) kW (PS) / 5,500 – 6,000 RPM
- Max. engine torque 380 Nm. / 1,700 – 4,000 RPM
- Max. electric motor power 78 (106) kW (PS)
- Max. electric motor torque 268 Nm.

DRIVING ASSISTANCE SYSTEM

- Driving modes: standard / sport / economy / automatic
- Off-road driving modes: mud / sand / rock / 4H / snow / 4L / expert
- Agile U-turn capability (Tank Turn)
- Off-road cruise-control system
- Body Transparent system

TRANSMISSION SYSTEM

- 9-Speed auto transmission (9HAT)

SUSPENSION SYSTEM, WHEEL, & TIRE

- Double cross arm independent front suspension
- Multi-link rear suspension
- 4WD system
- Tire size 265/50 R20
- Alloy Wheel 20"
- Tailgate installed spare tire

STEERING WHEEL SYSTEM

- Electric steering wheel

BRAKING SYSTEM

- Front & Rear four-wheel ventilated disc brakes

EXTERIOR EQUIPMENT

- Intelligent LED headlamp
 - Auto on-off headlamp
 - Follow-me-home function
 - Auto high-low beam
- LED daytime running light (DRL)
- LED taillight
- Front & Rear LED fog lamp
- Electric adjustable side mirror with turning lamp
- Front & Rear auto sensing wipers
- Roof rail & shark fin antenna
- Tail gate with electric suction

CONVENIENCE

- 12.3" Digital information display
- Wireless charger
- Active & walk away system
- Voice command system
- Auto air condition
 - Front with 2 zone control
 - Rear
- Cabin air quality system (AQS)
- N95 air filtration system
- System update via firmware over-the-air (FOTA)
- 2nd row air condition control panel

ENTERTAINMENT SYSTEM

- 14.6" Touch screen multimedia display with 8 speakers
- Apple CarPlay, Android Auto, Bluetooth, & MP5 online music
- Speed sensitive volume control

INTERIOR EQUIPMENT

- Interior color: Black
- Multi-color ambient light
- Interior garnish: Gray and Silver
- Electric steering wheel with audio and driving information switches
- Paddle shift
- Electronic parking brake (EPB) with automatic vehicle hold (AVH)
- Driving mode controller
- Electronic shifter
- Smart key & push start system
- 1st row seat
 - 8-directions adjustable electric driver seat
 - Driver seat with 4-directions electric lumbar support
 - 4-directions adjustable electric passenger seat
- 2nd row seat
 - Foldable seat 60:40
 - Center armrest with cup holder
- 3rd row seat
 - Electric foldable back seat 50:50
- USB ports for front & rear passenger and video recorder
- Power supply slot (220V)
- All electric windows with one - touch button

SAFETY SYSTEM & INTELLIGENT TECHNOLOGY

- Front / Side / Curtain airbags
- Customer service contact center
- Emergency call
- 360° surrounding camera
- Adaptive cruise control with intelligent cornering (Intelligent ACC)
- Traffic Jam Assist (TJA)
- Auto Emergency Braking + Intersection (AEBI)
- Front Collision Warning (FCW)
- Maneuver Emergency Braking (MEB)
- Lane Departure Warning (LDW)
- Lane Keeping Assist (LKA)
- Lane Center Keeping (LCK)
- Emergency Lane Keeping (ELK)
- Wisdom Dodge System (WDS)
- Lane Change Assistant (LCA)
- Rear Collision Warning (RCW)
- Rear Cross Traffic Alert (RCTA)
- Rear Cross Traffic Braking (RCTB)
- Second Collision Mitigation (SCM)
- Hill Start Assist / Hill Descent Control (HSA / HDC)
- Tire Pressure Monitoring System (TPMS)
- Door Open Warning (DOW)
- 4 front & 4 rear sensors
- Traffic sign recognition & speed alarm
- Emergency Signal System (ESS)
- Child seat anchor (ISOFIX)
- Child safety lock

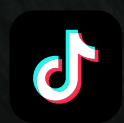
GWM



@gwm.indonesia



@gwmindonesia



GWMIndonesia



@GWM_ID



www.gwmauto.co.id