



Blue Nexus for the Baltic Sea Region

Convener for Solving Complex Challenges
Connecting People with Possibilities to Restore
and Protect Our Shared Sea via Blue Literacy
and Collaborative Leadership.

www.BalticLivingLab.org

#BalticLivingLab
#BlueProjects
#CitizenScience
#OpenSchooling





#BalticLivingLab
#BlueProjects
#CitizenScience
#OpenSchooling

The Baltic Living Lab advances Blue Literacy through sustainability instruction for adaptation to the Twin Transition (blue and green education aligned with the Green Deal combined with digital literacy aligned with the EU Digital Education Action Plan) collaborative initiatives, and school / multiple-helix partnerships that promote biodiversity restoration and the sustainable use of Baltic Sea resources.

We bring together stakeholders across sectors — academia, Blue Economy, SMEs, civil society, and government — to address the shared environmental challenges facing the eight EU countries bordering the Baltic Sea: Denmark, Estonia, Finland, Germany, Latvia, Lithuania, Poland, and Sweden. Our members form an informed and resilient community, fostering cooperation and dialogue to co-design practical solutions and promote Blue Literacy for learners of all ages.

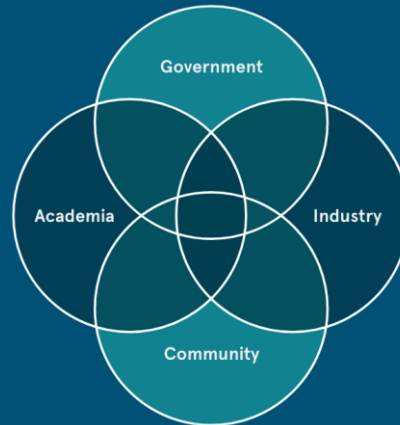


Join the Baltic Living Lab at www.BalticLivingLab.org and
become part of a vibrant and engaged Blue Literacy Community!

Blue Nexus for the Baltic Sea Region

Government – Includes local, regional, and national authorities, as well as EU-level bodies responsible for education, environment, and innovation policies. They are critical for embedding Blue Literacy into curricula and public programs and ensuring alignment with Mission Ocean policy objectives.

Industry/SMEs/Entrepreneurs – Encompasses Blue Economy sectors (e.g., fisheries, renewable energy, maritime transport, eco-tourism) and technology providers (including digital tools and citizen science equipment developers). They providing real-world challenges for open schooling projects, offering mentorship, internships, and career pathways for youth.



Convening Four Key Sectors
that together drive
INNOVATION
SUSTAINABILITY
SYSTEMIC CHANGE

Academia – Universities, research institutes, and education providers, including teacher training organizations, are essential for producing and validating scientific content and supporting citizen science data quality and integration into EU monitoring systems. Formal education ecosystems foster the nurturing of children who become a new generation of Agents of Change

Community – Civil society groups, NGOs, schools, youth organizations, cultural networks, and informal learning environments. They are at the heart of mobilizing citizen participation in environmental monitoring, co-creating nature-based solutions tailored to local needs, and building grassroots ownership of aquatic systems.

Become a Member of the Baltic Living Lab

Blue Nexus for the Baltic Sea Region



Advancing innovation, co-creation, and shared solutions through strategic partnerships and funding synergies



Partnering schools with industry experts from the Blue Economy, scientists, policymakers, artists, innovators, and researchers



Develop and carry out Blue Literacy projects in both freshwater and marine environments



Engage in twinning and European Projects Cross-Border Collaboration



Share Best-Practices in Citizen Science and Open-Schooling Methodologies

Become a Member of the Baltic Living Lab

Baltic Living Lab – a convener
of the multiple helix
representation that empowers
people from all walks of life to
participate in the EU Mission
Ocean, “*Restore Our Oceans
and Waters by 2030*”

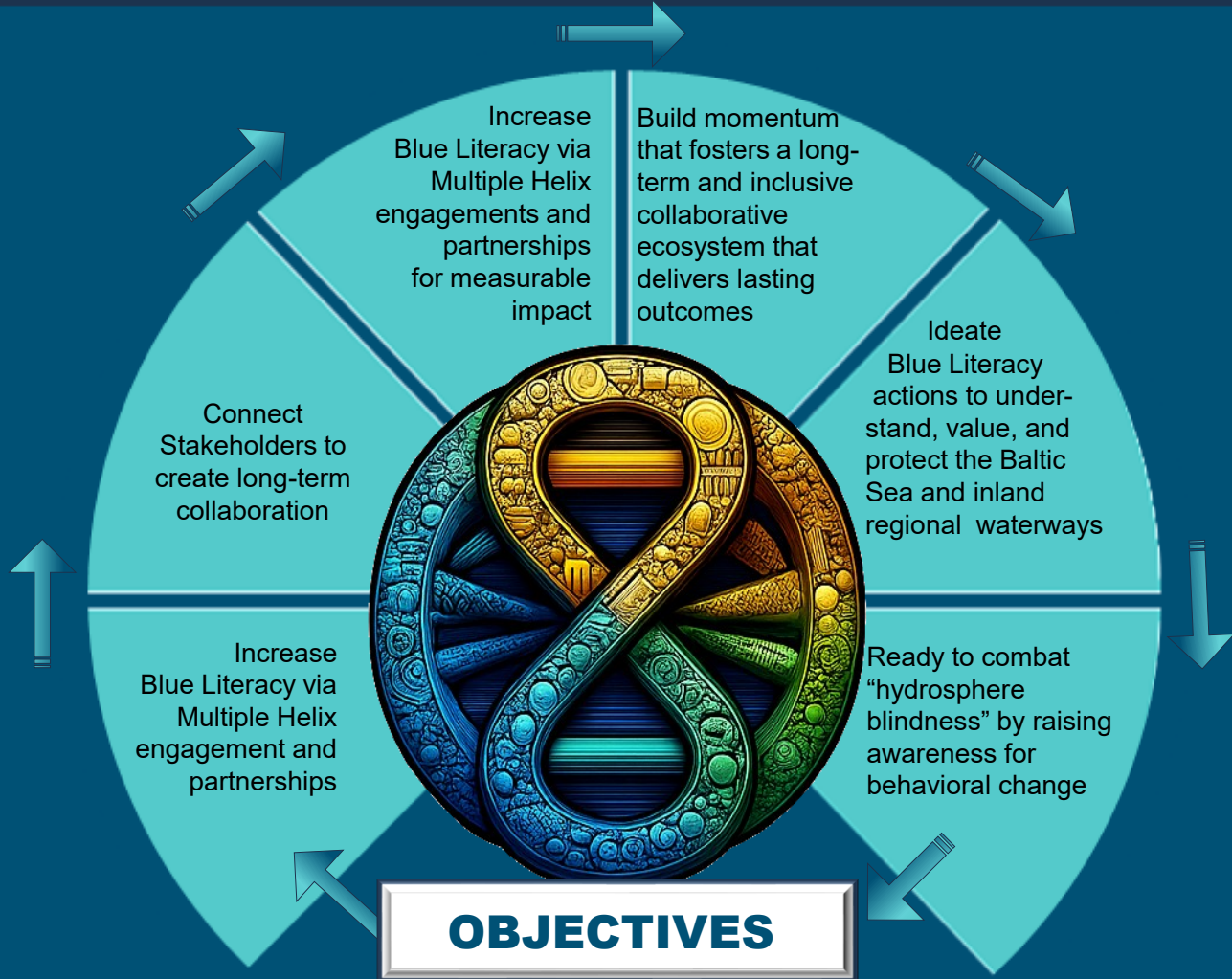


Bringing together diverse voices and expertise from scientists, educators, policymakers, artists, industry leaders, community advocates, and communicators is not just beneficial; it is essential. Only through inclusive, interdisciplinary collaboration can we begin to design solutions that are informed, equitable, and sustainable. To stimulate innovation in the sustainable Blue Economy and create synergies in related initiatives, Baltic Living Lab aims to leverage a wide array of tools and approaches. These include sustainability instruction, citizen science, behavioral insights, informed policymaking, restorative biodiversity efforts, artistic engagement, and sustainable industry practices, among others. Each plays a unique role in shaping resilient communities and regenerative systems. By uniting these capabilities within a shared framework, we create the conditions for meaningful, scalable impact — transforming knowledge into action and aspiration into lasting change.

Addressing today's pressing environmental challenges — from climate change and biodiversity loss to ocean degradation and unsustainable resource use — requires more than isolated efforts. These are complex, interconnected problems that demand collaborative, cross-sectoral action. No single discipline, industry, or community can tackle them alone. By uniting representation of various capabilities within a shared framework, the Baltic Living Lab creates the conditions for meaningful, scalable impact, transforming knowledge into action and aspiration into lasting change.



- ✦ Sustainability Instruction
- ✦ Dissemination / Outreach
- ✦ Contributions to Informed Policymaking
- ✦ Citizen Science
- ✦ Science Communication & Media
- ✦ Climate Change
- ✦ Restorative Biodiversity
- ✦ Resilient Communities
- ✦ Artistic Endeavors
- ✦ Blue Economy Industrial Ecosystem
- ✦ Shipping and Transportation
- ✦ Marine Biology & Research
- ✦ Science Educators
- ✦ Behavioral Science
- ✦ Advocacy
- ✦ Sustainable Use of Resources



Catalyzing meaningful, long-term collaboration by uniting diverse stakeholders for participation in projects and initiatives.....





#BalticLivingLab
#BlueProjects
#CitizenScience
#OpenSchooling

Becoming a member of the Baltic Living Lab provides a unique opportunity for sharing experience, mutual learning, building relationships and collaborating on sustainability-related issues, with the potential to create new partnerships. Organizations that join benefit from increased visibility and exposure within the wider European society. The platform brings together complementary expertise, resources, educational materials, data, best practices and tools from across the region and around the world to enhance Blue Literacy. By working together, BLL members can increase the geographical scope of their activities and maximize the impact of their projects. Finally, membership in the Baltic Living Lab connects people from all walks of life connect with a vibrant and engaged community, align with European Union policies and initiatives, and contribute to growing movements in Blue Literacy, Citizen Science, and Open Schooling methodologies.

www.BalticLivingLab.org

