

★ **ALMOST** ★  
**SOLD OUT**



**REDISCOVER**  
PROPERTY

**REGISTERED  
LOTS FOR SALE**

**1895 Camden Valley Way  
Horningsea Park  
(Edmondson Park) NSW**

- Lots From 300 sqm
- More Sizes Available
- Choice Your Own Builder
- Established Neighborhood

**Selling Fast**

Contact:-

Rhythm Joshi 0451 971 107

DJ Joshi 0456 789 777

Rhythm@rediscover.com.au



Rediscover Property Pty Ltd ABN 21 611 124 540  
License No 10062271  
Level 5, 4 Columbia Court Norwest NSW 2153  
Mobile 0451 971 107  
rhythm@rediscover.com.au  
www.rediscoverproperty.com.au

**Your opportunity to build a brand-new home in a thriving community with**

# **GREENLANDS HORNINGSEA PARK**

**limited registered lot available**

Build Packages Available

**Choice of Your own Builder**

## Location

Enjoy the convenience of being in close proximity to everything that matters.

Edmondson Park Town Centre is around the corner to look after your shopping, dining and entertainment needs.

- Walk to Woolworths Prestons approx. 650 meters
- Walk to William Carey Christian School
- Edmondson Park Station at approx. 6 minutes drive
- Liverpool CBD at approx. 15 minutes drive

Secure your future in growth area nearby Western Sydney International Airport.

**Lot Prices starting from \$600,000** and varies on basis of size, location etc.

### Enquiries to:

Rhythm Joshi: 0451 971 107 [rhythm@rediscover.com.au](mailto:rhythm@rediscover.com.au)

DJ Joshi: 0456 789 777 [dj@rediscover.com.au](mailto:dj@rediscover.com.au)

Illustration Purposes Only

Camden Valley Way



William Carey  
Christian School

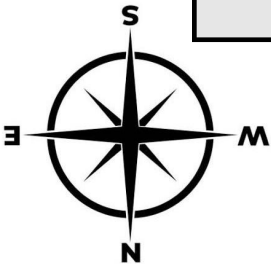
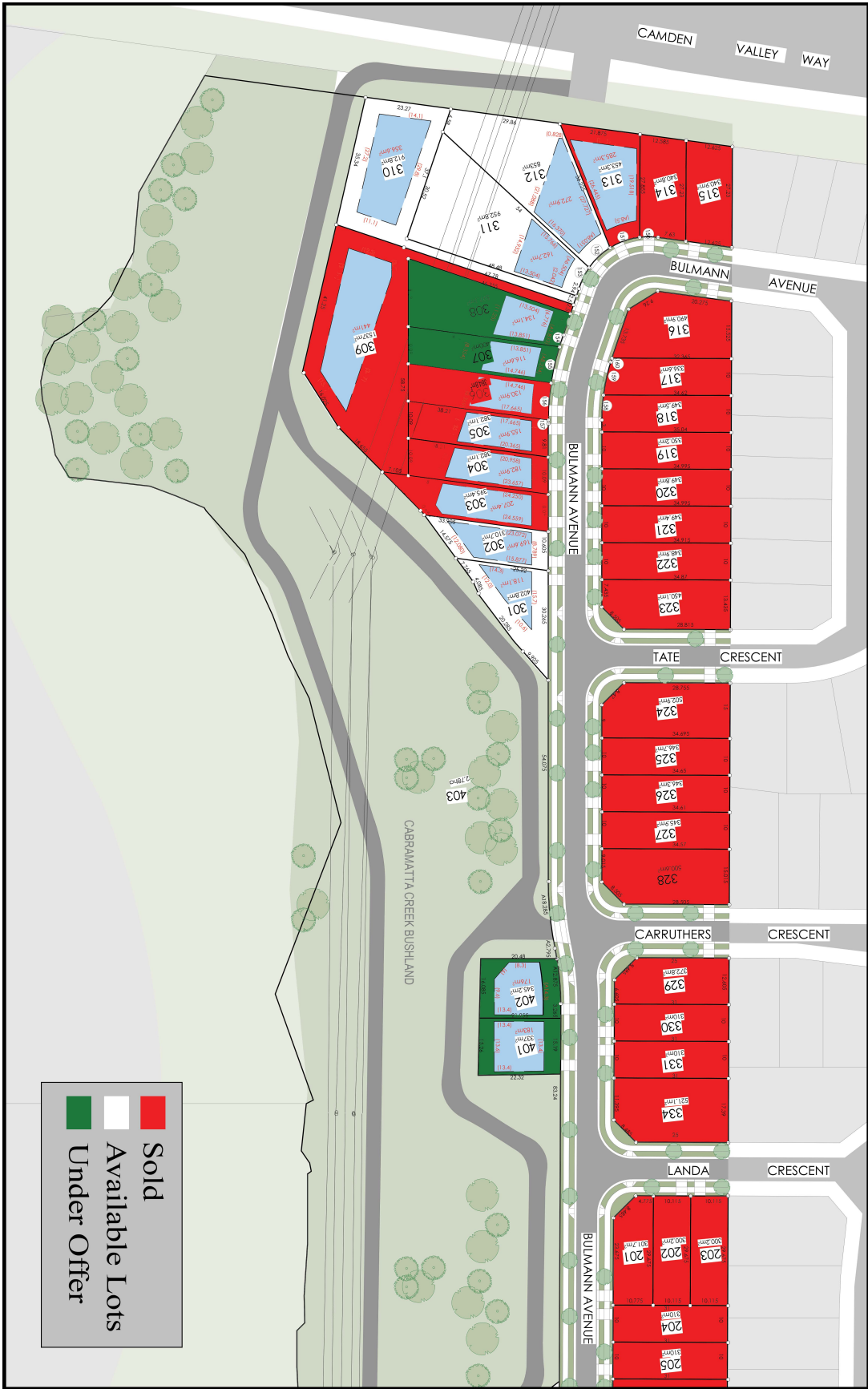
woolworths prestons



Source: <https://maps.six.nsw.gov.au/>

	Sold
	Available Lots
	Under Offer





**Indicative Plan Only**

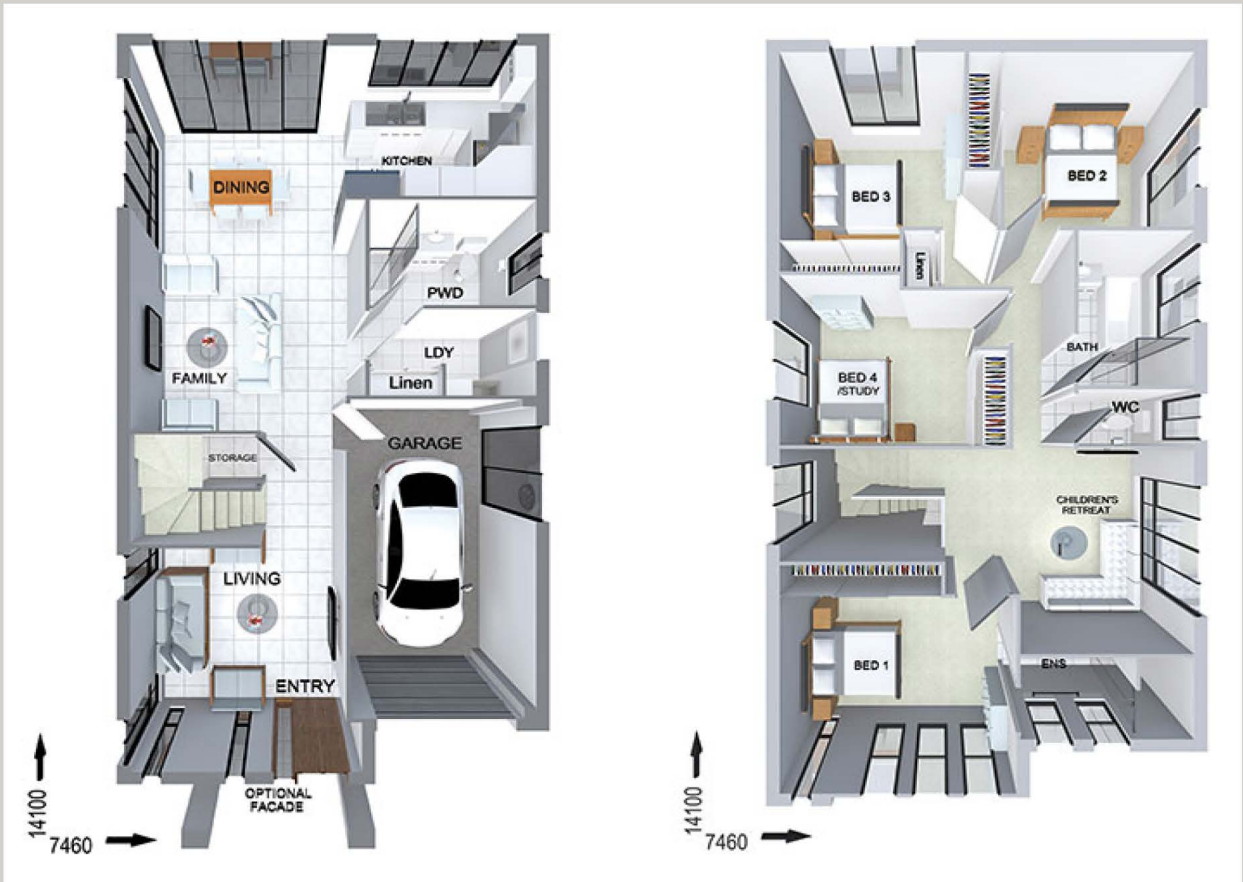
# GREENLANDS HORNINGSEA PARK

GREENLANDS HORNINGSEA PARK			
Lot No.	Area(m <sup>2</sup> )	Sale Price	Address
117	1235.7	\$900,000	73 McCredie Drive
131	479.1	\$860,000	11 Solomon Crescent
228	350.1	\$680,000	89 Bulmann Avenue
235	404.8	\$810,000	104 Bulmann Avenue
244	370	\$740,000	122 Bulmann Avenue
245	984.6	\$850,000	124 Bulmann Avenue
301	407.1	\$740,000	70 Bulmann Avenue
302	310.7	\$680,000	68 Bulmann Avenue
310	912.8	\$1000,000	52 Bulmann Avenue
311	952.8	\$720,000	50 Bulmann Avenue
312	853	\$790,000	48 Bulmann Avenue

**Lots availability and price subject to change without notice**

# Builder's Illustration

# LOT 307



DESIGN: FC0884

LAND SIZE: 400M2



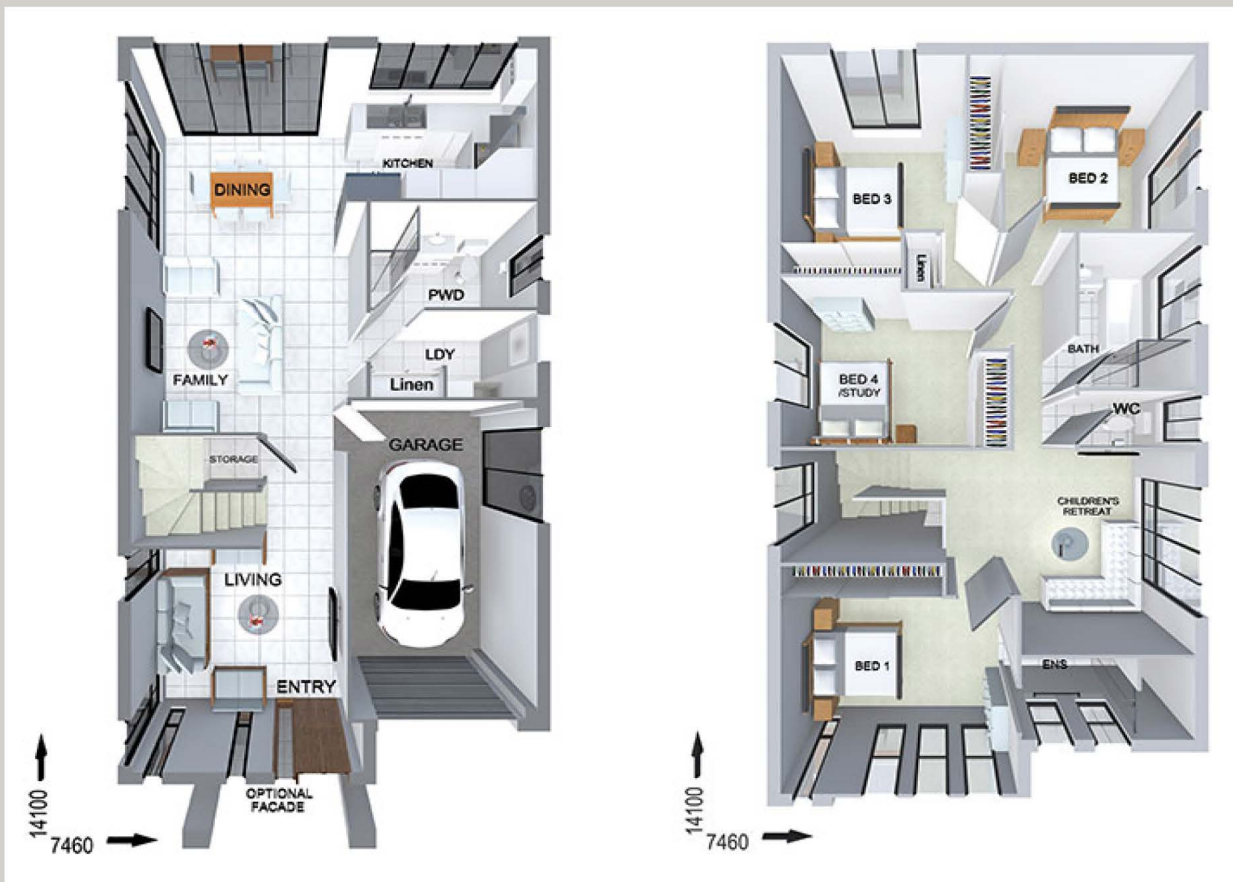
## RESORT PACKAGE INCLUSION:

- All Site Works
- Floor Coverings
- Ducted Air Conditioning
- 900 mm Stainless Steel Cooktop and Oven
- Stainless Steel Built-in Microwave
- Dishwasher
- Double Bowl undermount Sink
- 20mm Stone to Kitchen Island
- Bulkhead and shadow linen to all overhead cupboards
- Hettich Soft-Close hinges to Cupboards and Draws
- 3 Coat Dulux paint system
- Shark Nose (finger pull) Cupboard doors.
- Melamine Shelves to Linen and Pantry
- 20mm Stone benchtops to Bathroom, Ensuite and Laundry
- Fibreglass flyscreens to windows
- Remote Garage door opener



# Builder's Illustration

# LOT 308



DESIGN: FC0884

LAND SIZE: 597M2

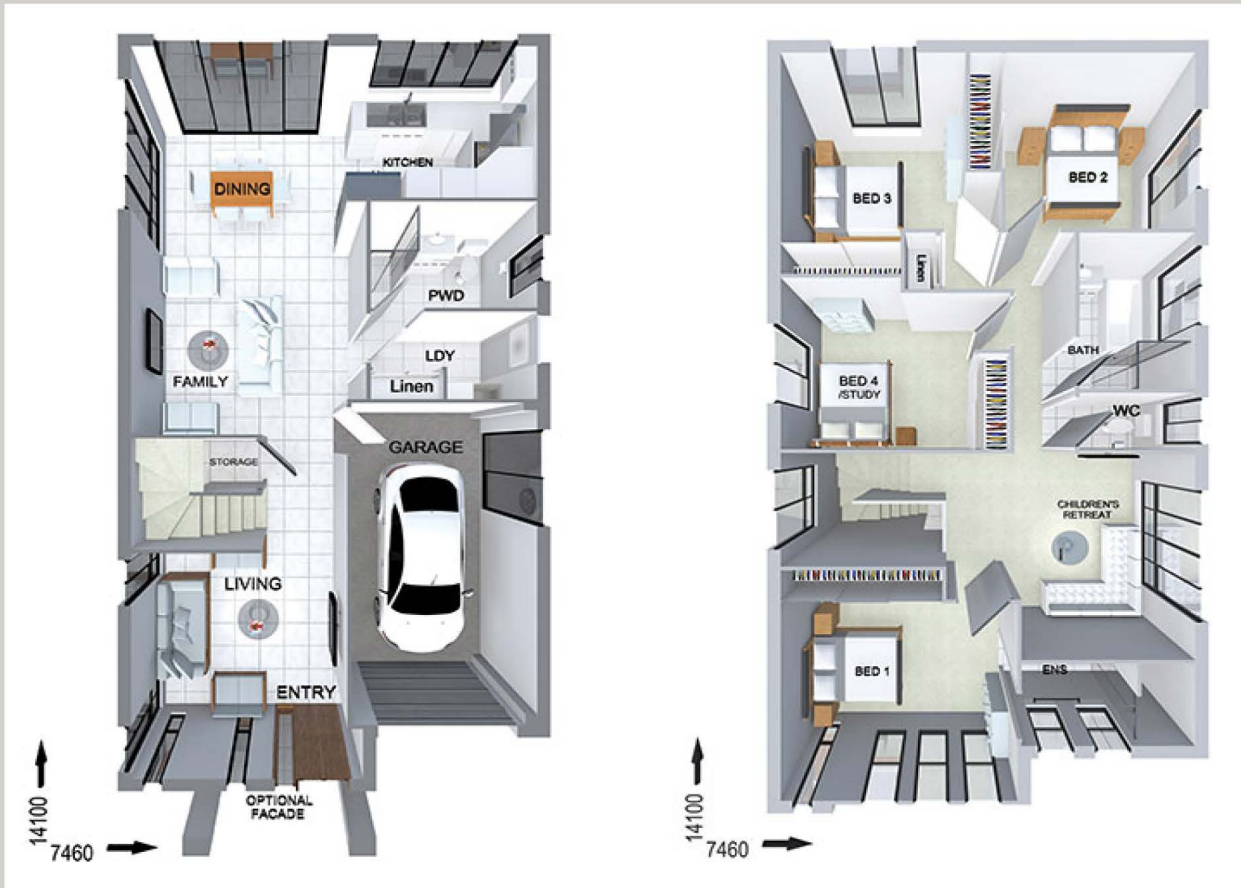


## RESORT PACKAGE INCLUSION:

- All Site Works
- Floor Coverings
- Ducted Air Conditioning
- 900 mm Stainless Steel Cooktop and Oven
- Stainless Steel Built-in Microwave
- Dishwasher
- Double Bowl undermount Sink
- 20mm Stone to Kitchen Island
- Bulkhead and shadow linen to all overhead cupboards
- Hettich Soft-Close hinges to Cupboards and Draws
- 3 Coat Dulux paint system
- Shark Nose (finger pull) Cupboard doors.
- Melamine Shelves to Linen and Pantry
- 20mm Stone benchtops to Bathroom, Ensuite and Laundry
- Fibreglass flyscreens to windows
- Remote Garage door opener

# Builder's Illustration

# LOT 311



DESIGN: FC0884

LAND SIZE: 952M2

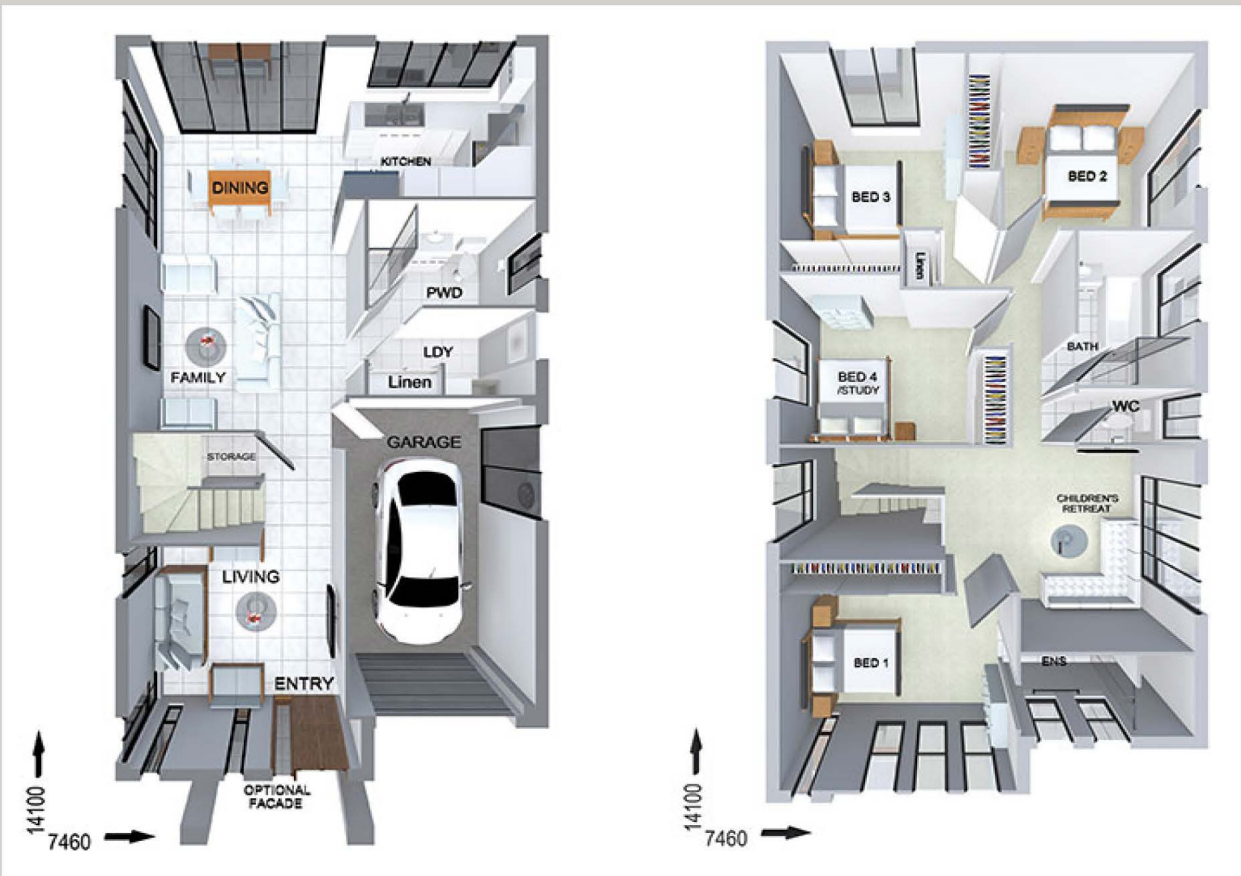


## RESORT PACKAGE INCLUSION:

- All Site Works
- Floor Coverings
- Ducted Air Conditioning
- 900 mm Stainless Steel Cooktop and Oven
- Stainless Steel Built-in Microwave
- Dishwasher
- Double Bowl undermount Sink
- 20mm Stone to Kitchen Island
- Bulkhead and shadow linen to all overhead cupboards
- Hettich Soft-Close hinges to Cupboards and Draws
- 3 Coat Dulux paint system
- Shark Nose (finger pull) Cupboard doors.
- Melamine Shelves to Linen and Pantry
- 20mm Stone benchtops to Bathroom, Ensuite and Laundry
- Fibreglass flyscreens to windows
- Remote Garage door opener

# Builder's Illustration

# LOT 312



DESIGN: FC0884

LAND SIZE: 853M2



## RESORT PACKAGE INCLUSION:

- All Site Works
- Floor Coverings
- Ducted Air Conditioning
- 900 mm Stainless Steel Cooktop and Oven
- Stainless Steel Built-in Microwave
- Dishwasher
- Double Bowl undermount Sink
- 20mm Stone to Kitchen Island
- Bulkhead and shadow linen to all overhead cupboards
- Hettich Soft-Close hinges to Cupboards and Draws
- 3 Coat Dulux paint system
- Shark Nose (finger pull) Cupboard doors.
- Melamine Shelves to Linen and Pantry
- 20mm Stone benchtops to Bathroom, Ensuite and Laundry
- Fibreglass flyscreens to windows
- Remote Garage door opener

<https://home-co.com.au/prestons>



**WILLIAM CAREY  
CHRISTIAN SCHOOL**  
<https://wccs.nsw.edu.au/>



Ed Square  
<https://www.edsquare.shopping/>



## Edmondson Park Station



### Routes from this stop

T2	Parramatta or Leppington to City	>
T2	City to Parramatta or Leppington	>
T5	Leppington to Richmond	>
T5	Richmond to Leppington	>
T8	Macarthur to City via Airport or Sydenham	>
T8	City to Macarthur via Airport or Sydenham	>

**DISCLAIMER:** While Rediscover Property have taken all care in preparing this information to ensure that the information contained herein is true and accurate, we accept no responsibility and disclaim all liability in respect of any errors, inaccuracies or misstatements contained. Rediscover Property urges prospective purchasers to make their own enquiries to verify the information contained herein.