

How can you use these sigils?

♥ **Design** – Choose a design and draw it wherever you wish. (Or let your Dom choose and draw one on you.)

♥ **Charge** – Focus your energy on the sigil through meditation, visualization, or physical sensation.

♥ **Activate** – Burn it, tear it, chant over it, or incorporate it into a scene. (Yes, a scene's energy can fuel a sigil.)

♥ **Carry** – Keep the sigil with you—on your body, in your wallet, or as jewelry—to maintain its influence.

♥ **Release** – Forget about it and trust the magic to work.





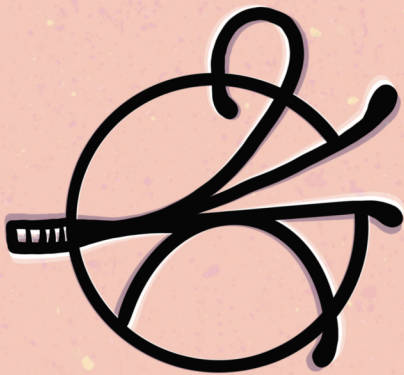
**Release fear; embrace
freedom.**



**Safety is the foundation
of freedom.**



**Allow your experiences
to transform you;
embrace growth and
change.**



Incorporate play;
explore with curiosity
and fun.



**Welcome vulnerability
as a strength and a
path to deeper
connection.**



**Embrace the paradox
of control and release.**



**Let your fantasies
inspire you.**



**Bound by nothing but
consent.**



**Growth begins at the
edge of comfort.**



**Nourish connection;
feast on desire.**



**Embrace the beauty of
surrender whether
giving or receiving
control.**



Service is **love** in
action.