

Similes and Metaphors

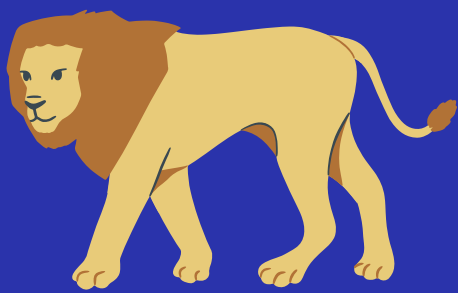


Simile

A type of figurative language that compares one thing with another



Artemis is as cunning as a fox.



Use connecting word "as"

Hercules is as brave as a lion.

Use connecting word "like"

Ares is vicious like a snarling beast.

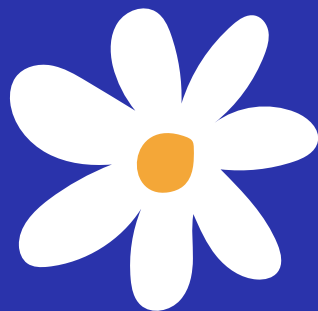


Figure of resemblance and relationship

Aphrodite is as beautiful as a flower



Things compared share similar characteristics

Hermes runs as fast as the wind.

Makes explicit comparison

Hephaestus is as resilient as a camel.

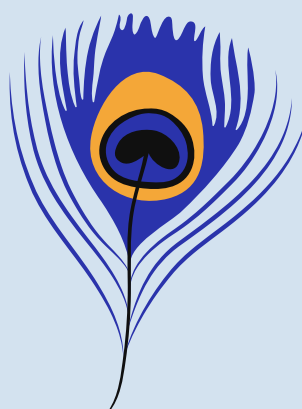


Uses effectively in story and poetry writing

Hades is as dark and mysterious as death.

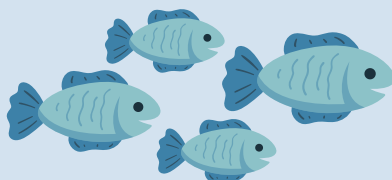
For elaborating descriptions

Hera is elegant like a peacock.



Metaphor

A type of figurative language that compares two things symbolically



The fisherman was a Poseidon in hunting fish.



Figure of resemblance and relationship

The boxer was a Hercules in battle.

Words "as" and "like" are omitted

The lawyer was an Athena in court.



Implied simile which enhances understanding of a concept

The model was an Aphrodite on the runway.

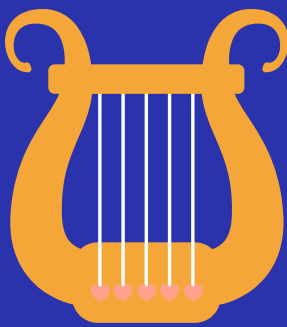
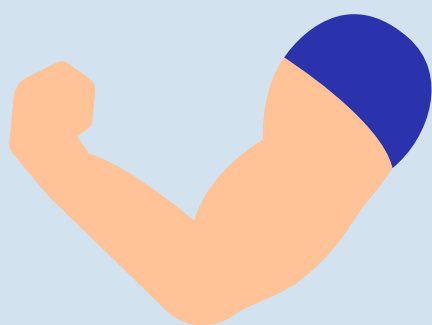


Suggests two different things are the same

The athlete was a Hermes on the track.

Comparison in which one thing represents another

The wrestler was a Zeus in the ring.



Uses effectively in story and poetry writing

The musician was an Apollo on the lyre.

For elaborating descriptions

The swordsmith is a Hephaestus in his craftsmanship.

