



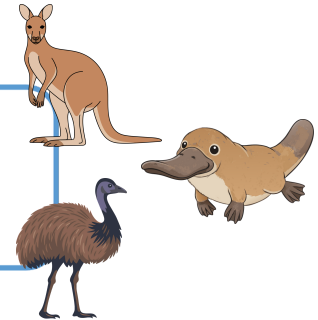
Australian Animal Adaptations

Middle Primary Advance Science

Fill in the blanks to the correct animal and its adaptive features.



kangaroo emu
Blue-tongue lizard koala platypus



Powerful hind legs to allow hopping fast and pouch to keep their young. The young need not cover the long distance as their mum does it for them.

It lives in eucalyptus trees and have special paws with two thumbs and sharp claws to grip branches tightly while climbing. Their belly breaks down poisonous leaves, thick fur keeps them warm and camouflaged.

It has a cool bill that senses tiny electric signals from fish twitching in muddy water, so it can find food even when it's too dark to see. It has a bill similar to a duck's bill.

It can't fly but they can run super fast on big open grasslands. Their feathers are light brown which helps them to camouflage with grassland environments. Sharp beak to help them spear and chew food.

Sticking out a bright blue tongue, combined with a wide pink mouth and loud hissing, it scare away predators. It has strong jaws for crushing tough food (insects, snails). It has scales that blend in with the Australian soil.



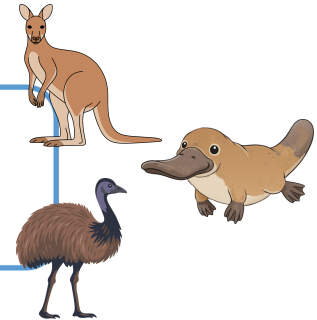
Australian Animal Adaptations - Solutions

Middle Primary Advance Science

Fill in the blanks to the correct animal and its adaptive features.



kangaroo emu
Blue-tongue lizard koala platypus



Powerful hind legs to allow hopping fast and pouch to keep their young. The young need not cover the long distance as their mum does it for them.

kangaroo

It lives in eucalyptus trees and have special paws with two thumbs and sharp claws to grip branches tightly while climbing. Their belly breaks down poisonous leaves, thick fur keeps them warm and camouflaged.

koala

It has a cool bill that senses tiny electric signals from fish twitching in muddy water, so it can find food even when it's too dark to see. It has a bill similar to a duck's bill.

platypus

It can't fly but they can run super fast on big open grasslands. Their feathers are light brown which helps them to camouflage with grassland environments. Sharp beak to help them spear and chew food.

emu

Sticking out a bright blue tongue, combined with a wide pink mouth and loud hissing, it scare away predators. It has strong jaws for crushing tough food (insects, snails). It has scales that blend in with the Australian soil.

Blue-tongue lizard