

LOWER PRIMARY

Advance Science

E-Booklet Part 2



Animal Products

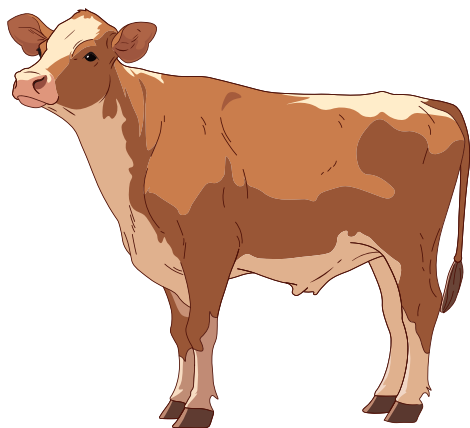
Lower Primary Advance Science

Match the animal with the correct product.



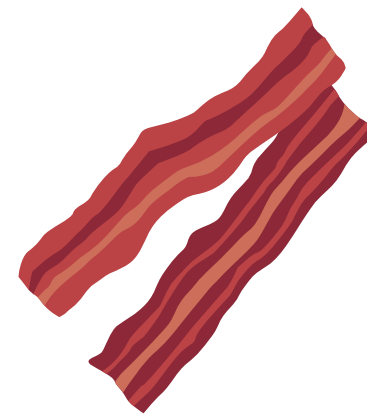
.

.



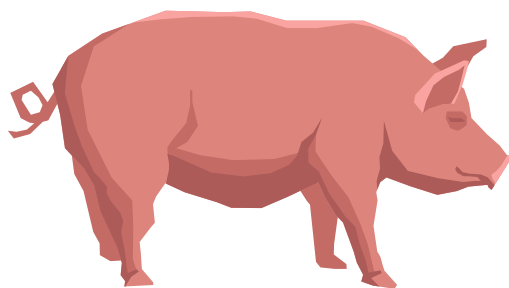
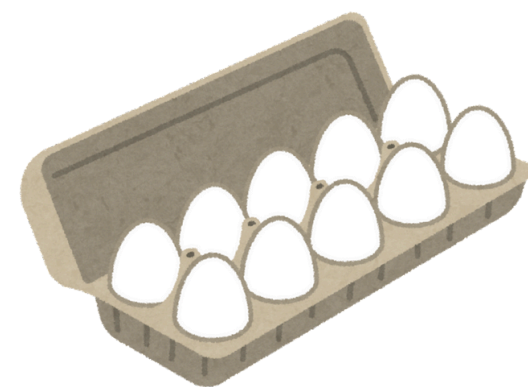
.

.



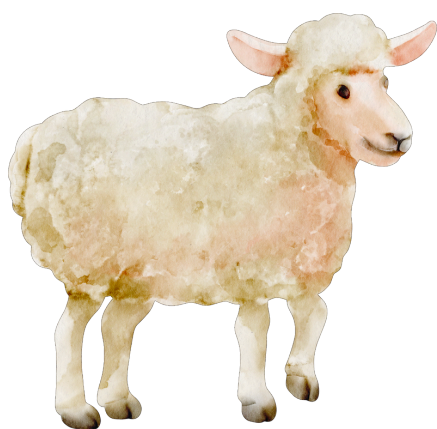
.

.



.

.



.

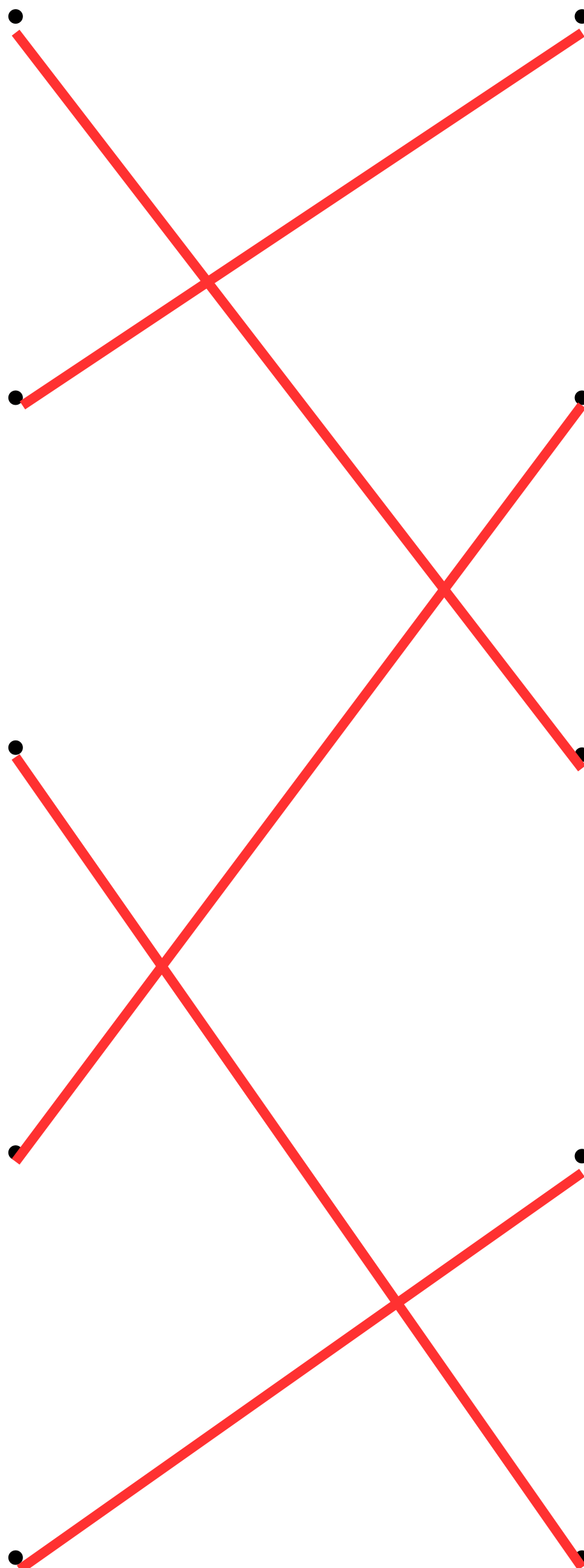
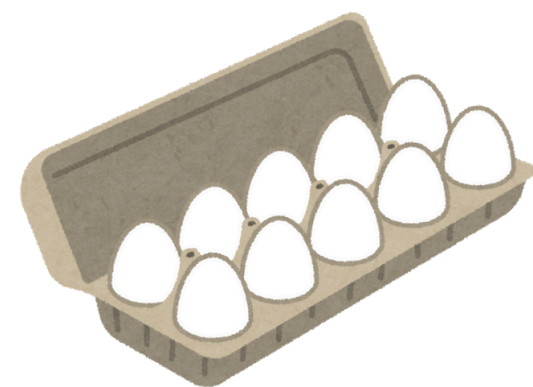
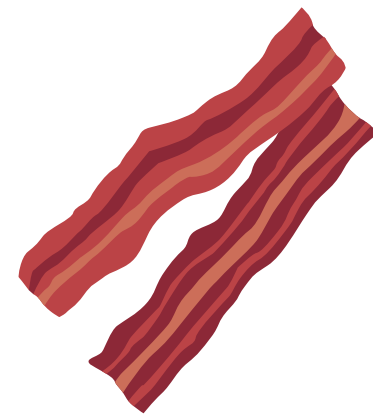
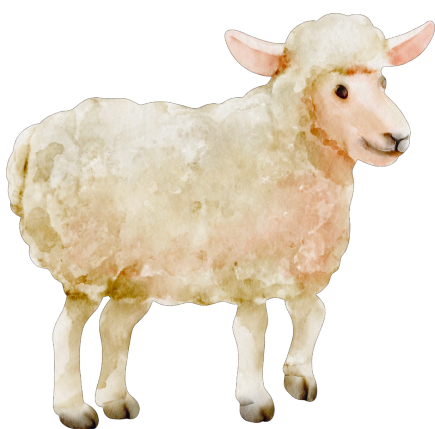
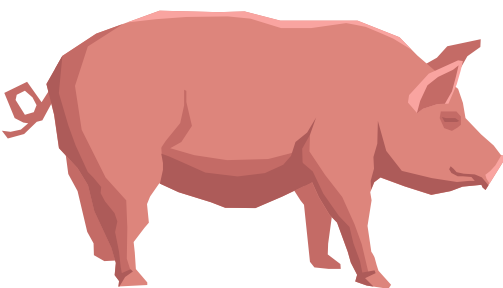
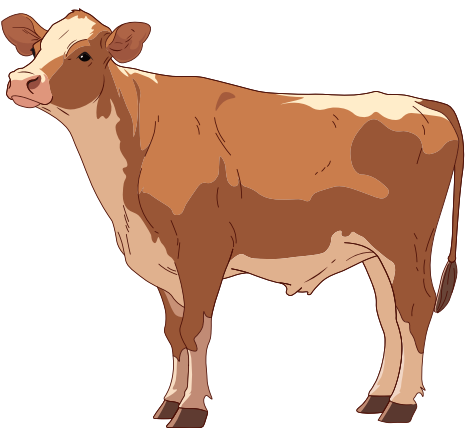
.



Animal Products - Solutions

Lower Primary Advance Science

Match the animal with the correct product.



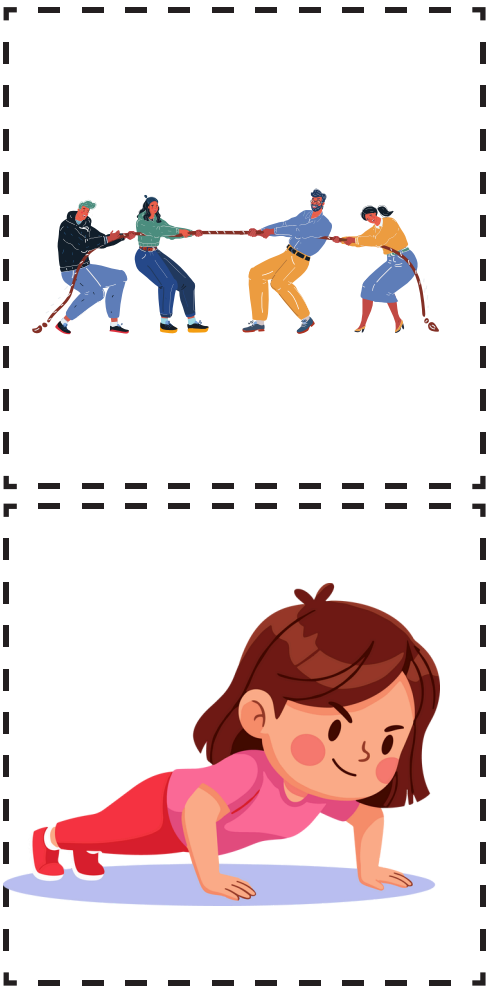
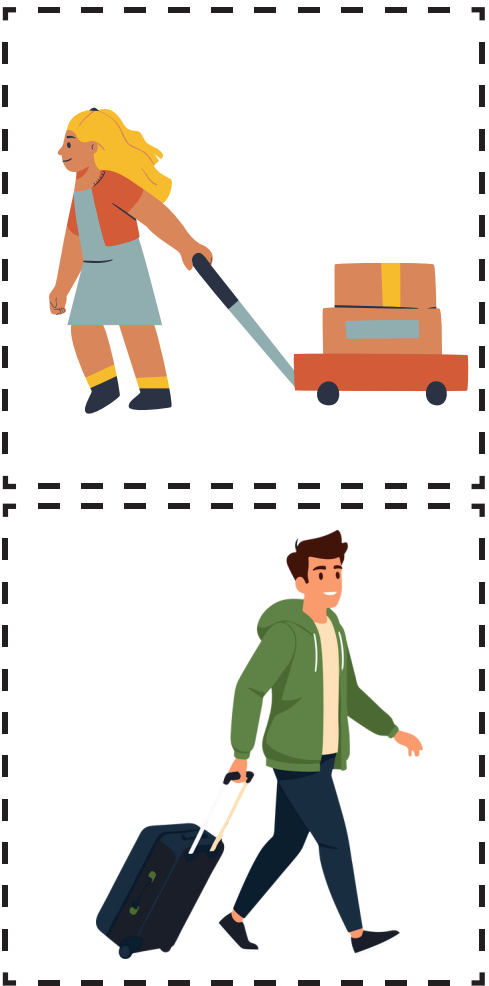
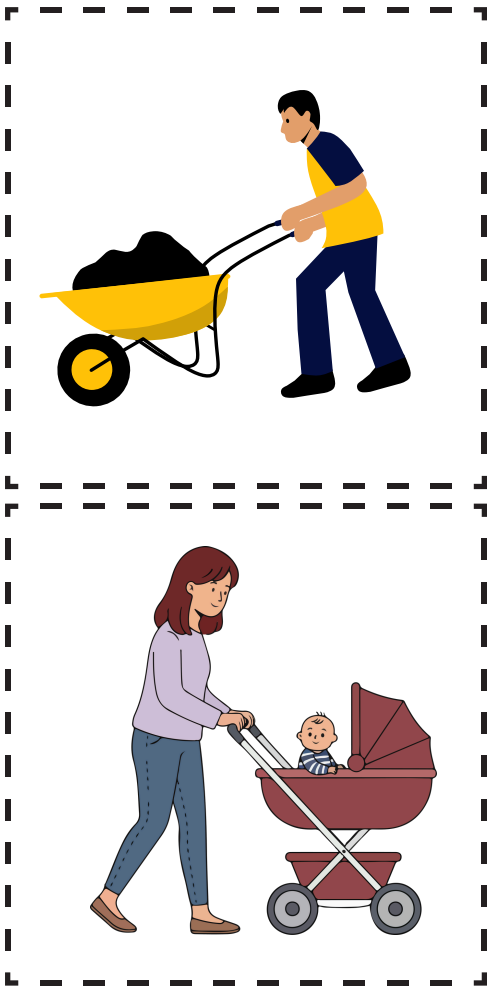
Force and Motion

Lower Primary Advance Science

Look at the pictures below. Cut and paste them into the correct box.

push

pull

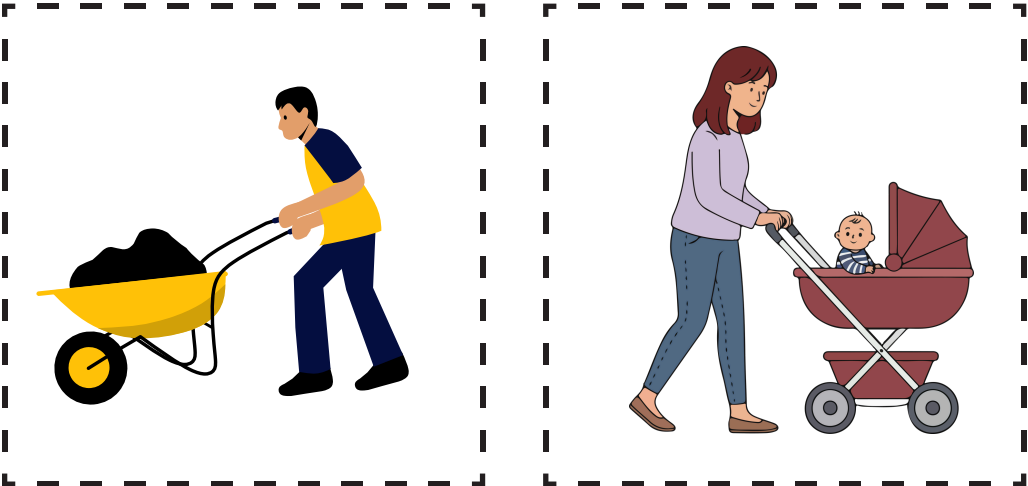


Force and Motion - Solutions

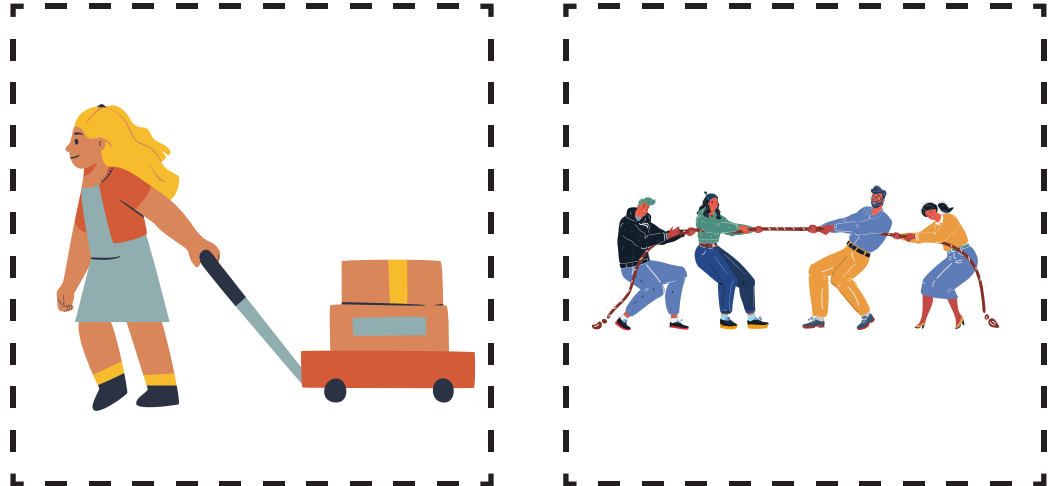
Lower Primary Advance Science

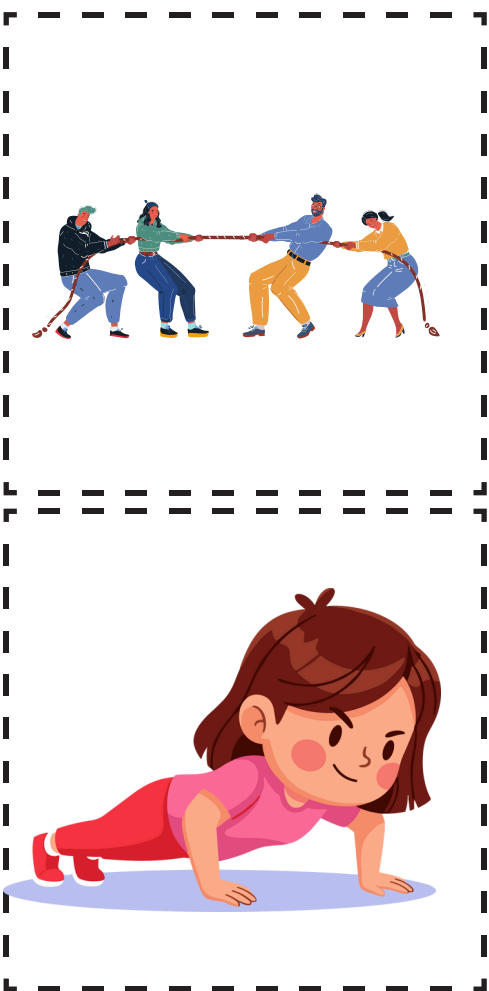
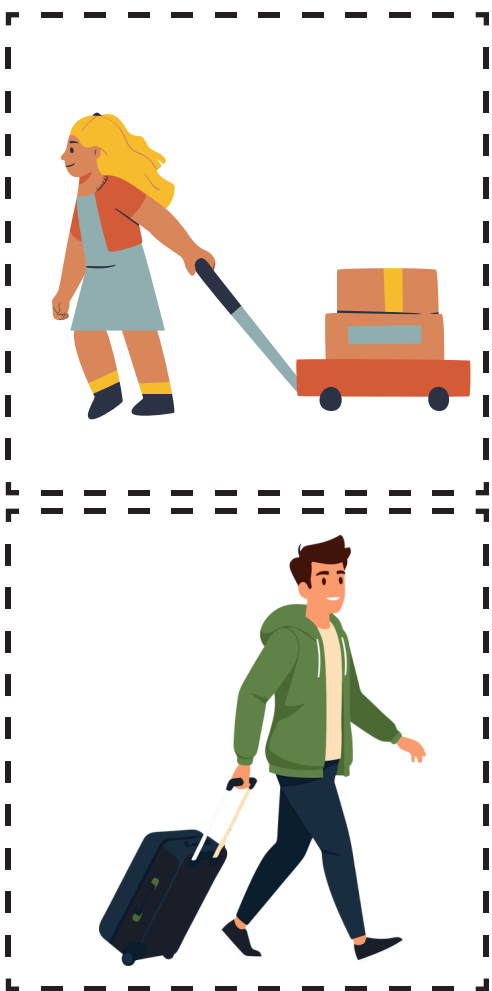
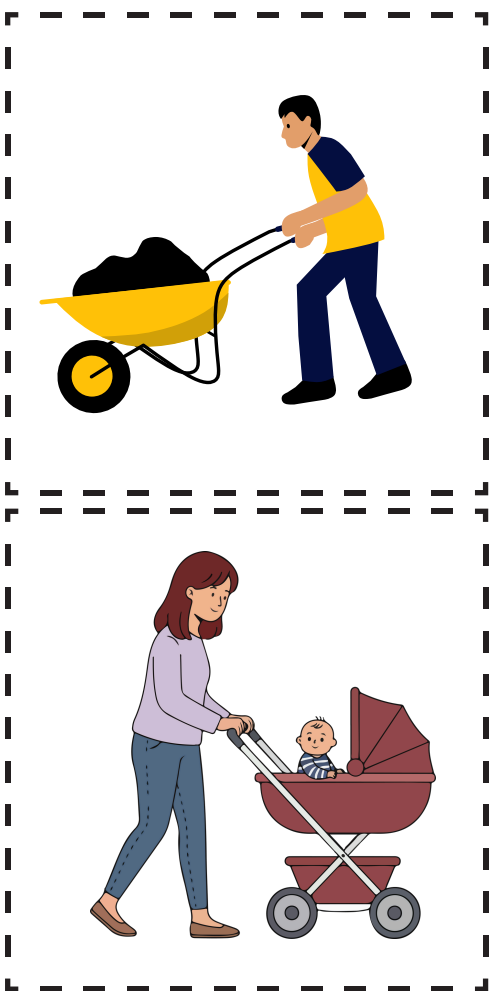
Look at the pictures below. Cut and paste them into the correct box.

push



pull

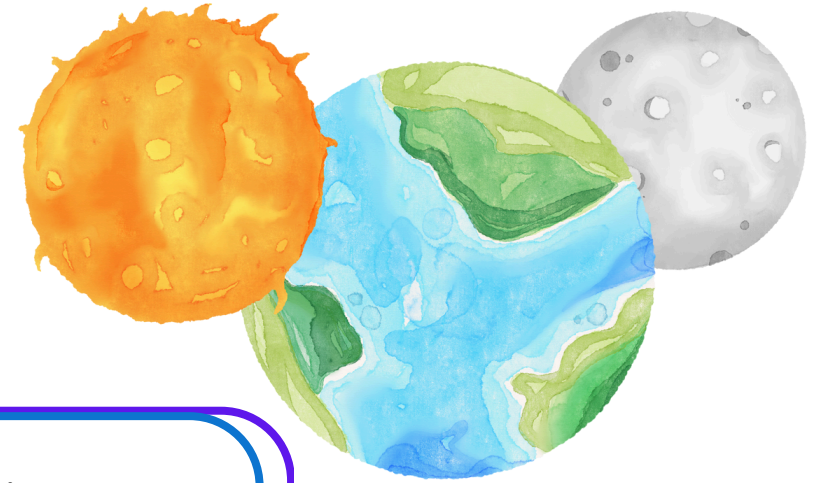




The Sun, Moon and Earth

Lower Primary Advance Science

Fill in the blanks with the helping words.



month

star

sun

light

hours

year

planet

moon

The _____ is found in the center of the Solar system.

it gives out _____ and heat.

The sun is not a planet. It is a _____.

The earth is a _____.

The earth spins around once every 24 _____.

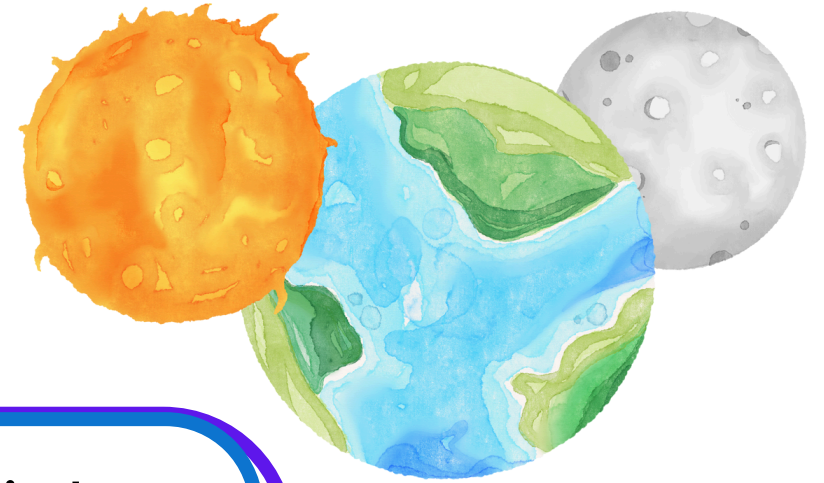
The earth goes around the sun called a orbit in about one _____.

The _____ goes around the Earth in one _____.

The Sun, Moon and Earth - Solutions

Lower Primary Advance Science

Fill in the blanks with the helping words.



month

star

sun

light

hours

year

planet

moon

The sun is found in the center of the Solar system.

it gives out light and heat.

The sun is not a planet. It is a star.

The earth is a planet.

The earth spins around once every 24 hours.

The earth goes around the sun called a orbit in about one year.

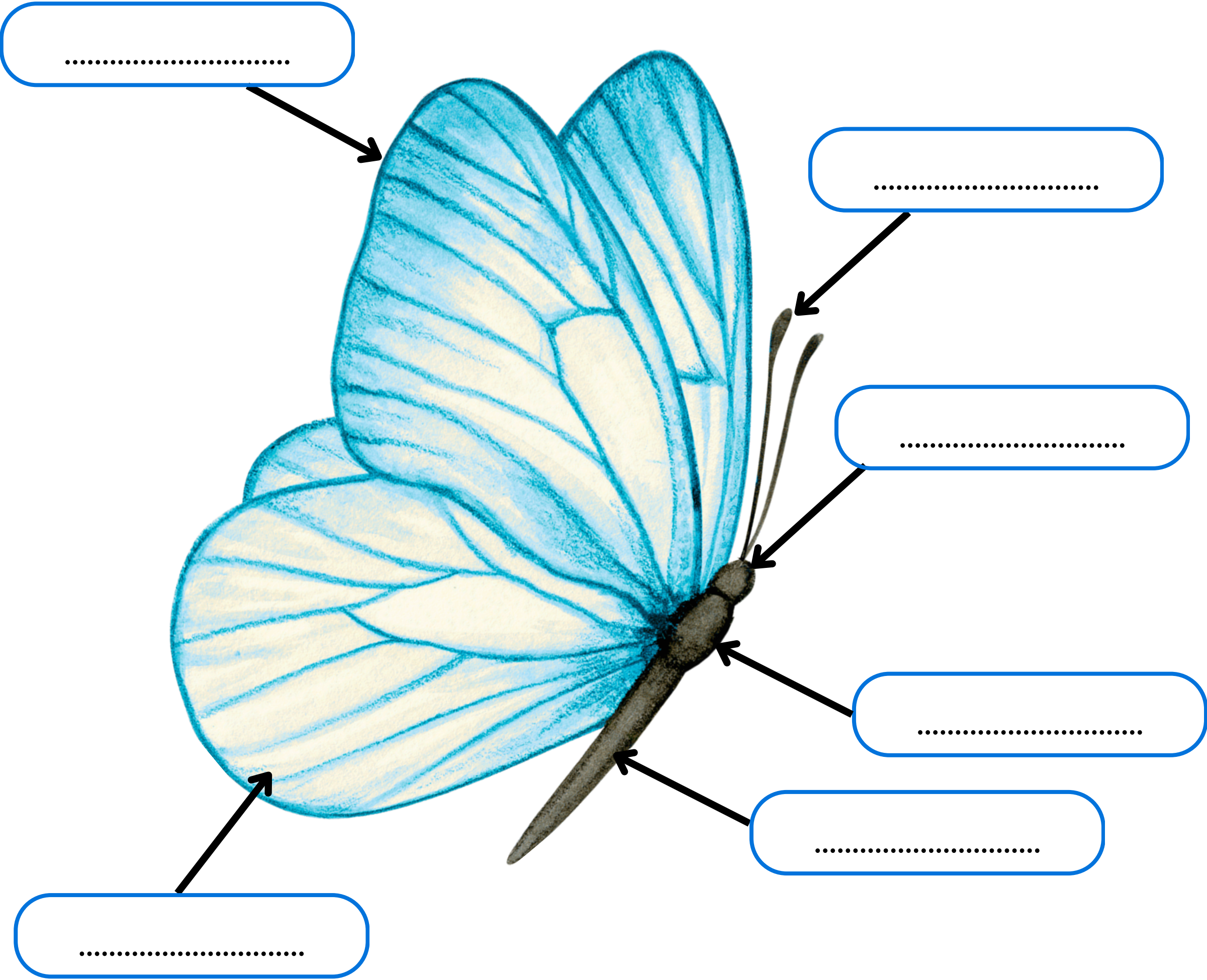
The moon goes around the Earth in one month.

Parts of a Butterfly

Lower Primary Advance Science

Label the parts of a butterfly using the helping words.

- thorax
- abdomen
- head
- hindwing
- antenna
- forewing





Parts of a Butterfly - Solutions

Lower Primary Advance Science

Label the parts of a butterfly using the helping words.

- thorax
- abdomen
- head
- hindwing
- antenna
- forewing

