



Voliro LPS Sample Report Q2 2025

VOLIRO

Project Information			
Project Name	Sample report	Report ID	Sample report
Inspection Date	2025-07-18	Report Date	2025-07-22
Report Version	1.0	Location	Europe

Inspection Service Provider			
Name	Voliro AG	Pilots	Markus Indermaur

Asset Information			
Name	Vestas WTG XX	Material	

Inspection Equipment - Drone			
Model	Voliro T	Serial #	000001-0000085

Inspection Equipment - NDT			
Device Type	LPS	Manufacturer	Voliro
Model	Micro-Ohmmeter VG-BAT-150 special		

Table of Contents

1 Inspection Overview	3
1.1 Asset "Vestas WTG XX"	3
1.2 Measurement Overview	3
1.3 Inspection Location "Blade A"	4
1.4 Inspection Location "Blade B"	5
1.5 Inspection Location "Blade C"	6
2 Measurement Details	7
2.1 "Blade A"	7
2.2 "Blade B"	10
2.3 "Blade C"	13

1 Inspection Overview

1.1 Asset "Vestas WTG XX"

1.2 Measurement Overview

	Blade A	Blade B	Blade C
Pressure Side - 1	3.257 Ω	1.956 Ω	2.745 Ω
Pressure Side - 2	3.499 Ω	2.887 Ω	1.737 Ω
Pressure Side - 3	3.270 Ω	2.883 Ω	1.735 Ω
Suction Side - 1	4.486 Ω	2.480 Ω	4.017 Ω
Suction Side - 2	4.908 Ω	3.018 Ω	4.858 Ω
Suction Side - 3	3.567 Ω	2.494 Ω	2.053 Ω

1.3 Inspection Location "Blade A"

Inspection Point	Measured Value	Nominal Value	Comment
Blade A - Pressure Side - 1	3.257 Ω	-	
Blade A - Pressure Side - 2	3.499 Ω	-	
Blade A - Pressure Side - 3	3.270 Ω	-	
Blade A - Suction Side - 1	4.486 Ω	-	
Blade A - Suction Side - 2	4.908 Ω	-	
Blade A - Suction Side - 3	3.567 Ω	-	

1.4 Inspection Location "Blade B"

Inspection Point	Measured Value	Nominal Value	Comment
Blade B - Pressure Side - 1	1.956 Ω	-	
Blade B - Pressure Side - 2	2.887 Ω	-	
Blade B - Pressure Side - 3	2.883 Ω	-	
Blade B - Suction Side - 1	2.480 Ω	-	
Blade B - Suction Side - 2	3.018 Ω	-	
Blade B - Suction Side - 3	2.494 Ω	-	

1.5 Inspection Location "Blade C"

Inspection Point	Measured Value	Nominal Value	Comment
Blade C - Pressure Side - 1	2.745 Ω	-	
Blade C - Pressure Side - 2	1.737 Ω	-	
Blade C - Pressure Side - 3	1.735 Ω	-	
Blade C - Suction Side - 1	4.017 Ω	-	
Blade C - Suction Side - 2	4.858 Ω	-	
Blade C - Suction Side - 3	2.053 Ω	-	

2 Measurement Details

2.1 "Blade A"

2.1.1 Inspection Point "Blade A - Pressure Side - 1"

Measured Value	3.257 Ω	Nominal Value	-
GPS Position	N/A	Local Position	-1.322m, 1.379m, 60.387m
Platform Orientation	-80°	Platform Inclination	0°
UTC Date & Time	2025-07-18, 09:57:27	Comment	



2.1.2 Inspection Point "Blade A - Pressure Side - 2"

Measured Value	3.499 Ω	Nominal Value	-
GPS Position	N/A	Local Position	-0.866m, 1.221m, 63.140m
Platform Orientation	-79°	Platform Inclination	0°
UTC Date & Time	2025-07-18, 09:56:38	Comment	



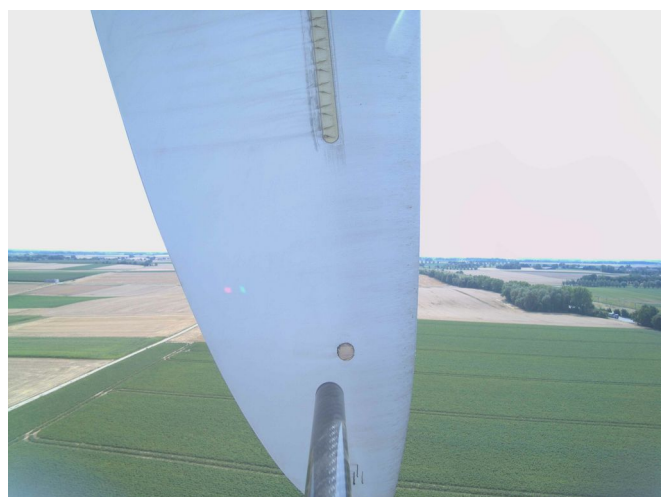
2.1.3 Inspection Point "Blade A - Pressure Side - 3"

Measured Value	3.270 Ω	Nominal Value	-
GPS Position	N/A	Local Position	-0.487m, 1.110m, 66.082m
Platform Orientation	-76°	Platform Inclination	-1°
UTC Date & Time	2025-07-18, 09:55:50	Comment	



2.1.4 Inspection Point "Blade A - Suction Side - 1"

Measured Value	4.486 Ω	Nominal Value	-
GPS Position	N/A	Local Position	-1.079m, 2.293m, 60.365m
Platform Orientation	107°	Platform Inclination	0°
UTC Date & Time	2025-07-18, 09:51:56	Comment	



2.1.5 Inspection Point "Blade A - Suction Side - 2"

Measured Value	4.908 Ω	Nominal Value	-
GPS Position	N/A	Local Position	-0.585m, 2.233m, 63.136m
Platform Orientation	107°	Platform Inclination	0°
UTC Date & Time	2025-07-18, 09:53:11	Comment	



2.1.6 Inspection Point "Blade A - Suction Side - 3"

Measured Value	3.567 Ω	Nominal Value	-
GPS Position	N/A	Local Position	-0.161m, 2.119m, 66.103m
Platform Orientation	106°	Platform Inclination	0°
UTC Date & Time	2025-07-18, 09:53:58	Comment	



2.2 "Blade B"

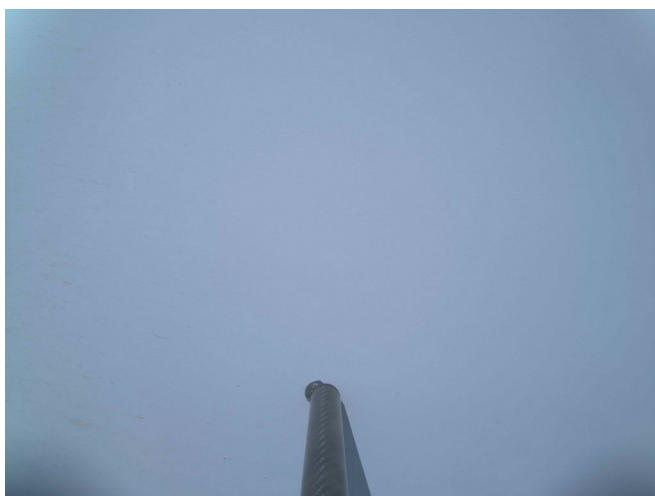
2.2.1 Inspection Point "Blade B - Pressure Side - 1"

Measured Value	1.956 Ω	Nominal Value	-
GPS Position	N/A	Local Position	-0.839m, 1.341m, 63.104m
Platform Orientation	-75°	Platform Inclination	0°
UTC Date & Time	2025-07-18, 09:29:24	Comment	



2.2.2 Inspection Point "Blade B - Pressure Side - 2"

Measured Value	2.887 Ω	Nominal Value	-
GPS Position	N/A	Local Position	-0.408m, 1.228m, 66.072m
Platform Orientation	-78°	Platform Inclination	0°
UTC Date & Time	2025-07-18, 09:28:03	Comment	



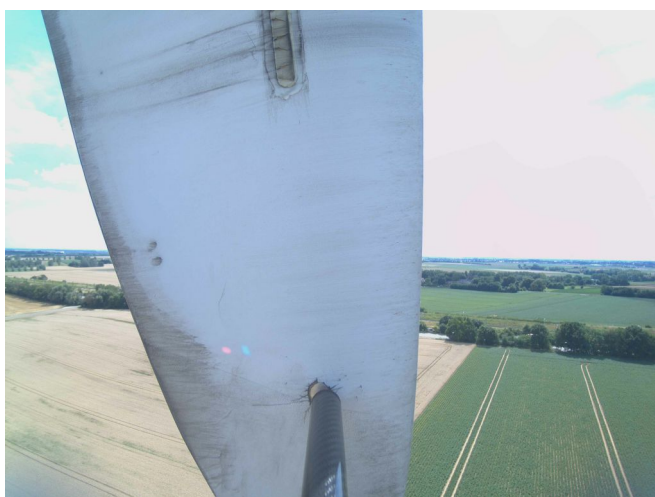
2.2.3 Inspection Point "Blade B - Pressure Side - 3"

Measured Value	2.883 Ω	Nominal Value	-
GPS Position	N/A	Local Position	0.120m, 1.069m, 70.018m
Platform Orientation	-76°	Platform Inclination	0°
UTC Date & Time	2025-07-18, 09:27:03	Comment	



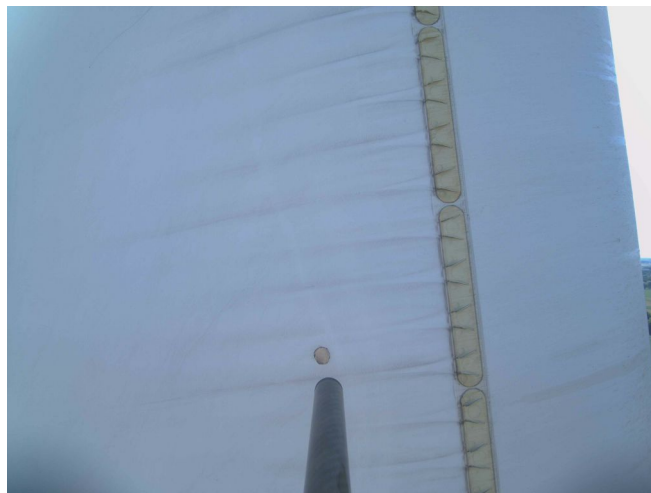
2.2.4 Inspection Point "Blade B - Suction Side - 1"

Measured Value	2.480 Ω	Nominal Value	-
GPS Position	N/A	Local Position	-0.549m, 2.321m, 63.045m
Platform Orientation	104°	Platform Inclination	0°
UTC Date & Time	2025-07-18, 09:31:38	Comment	



2.2.5 Inspection Point "Blade B - Suction Side - 2"

Measured Value	3.018 Ω	Nominal Value	-
GPS Position	N/A	Local Position	-0.136m, 2.229m, 66.025m
Platform Orientation	104°	Platform Inclination	0°
UTC Date & Time	2025-07-18, 09:32:32	Comment	



2.2.6 Inspection Point "Blade B - Suction Side - 3"

Measured Value	2.494 Ω	Nominal Value	-
GPS Position	N/A	Local Position	0.409m, 2.124m, 69.935m
Platform Orientation	105°	Platform Inclination	0°
UTC Date & Time	2025-07-18, 09:33:38	Comment	



2.3 "Blade C"

2.3.1 Inspection Point "Blade C - Pressure Side - 1"

Measured Value	2.745 Ω	Nominal Value	-
GPS Position	N/A	Local Position	-1.387m, 1.517m, 60.264m
Platform Orientation	-79°	Platform Inclination	0°
UTC Date & Time	2025-07-18, 09:04:34	Comment	



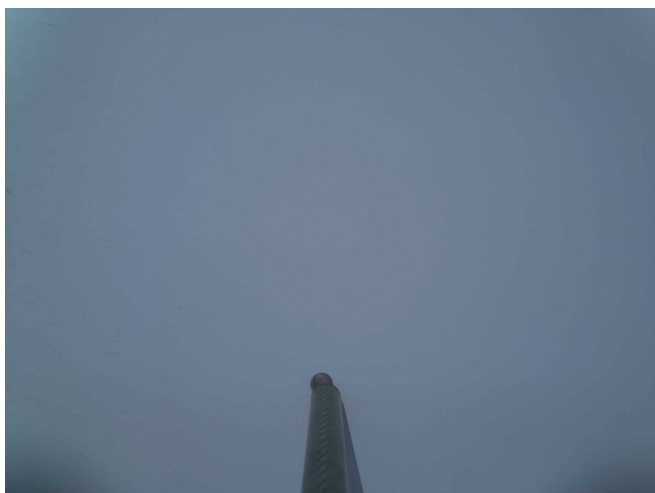
2.3.2 Inspection Point "Blade C - Pressure Side - 2"

Measured Value	1.737 Ω	Nominal Value	-
GPS Position	N/A	Local Position	-0.961m, 1.374m, 62.984m
Platform Orientation	-77°	Platform Inclination	0°
UTC Date & Time	2025-07-18, 09:03:41	Comment	



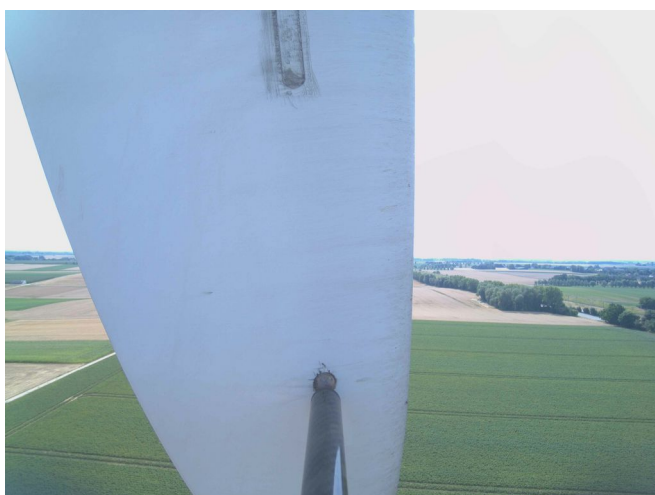
2.3.3 Inspection Point "Blade C - Pressure Side - 3"

Measured Value	1.735 Ω	Nominal Value	-
GPS Position	N/A	Local Position	-0.535m, 1.266m, 65.959m
Platform Orientation	-78°	Platform Inclination	0°
UTC Date & Time	2025-07-18, 09:02:46	Comment	



2.3.4 Inspection Point "Blade C - Suction Side - 1"

Measured Value	4.017 Ω	Nominal Value	-
GPS Position	N/A	Local Position	-1.130m, 2.422m, 60.240m
Platform Orientation	108°	Platform Inclination	0°
UTC Date & Time	2025-07-18, 08:58:15	Comment	



2.3.5 Inspection Point "Blade C - Suction Side - 2"

Measured Value	4.858 Ω	Nominal Value	-
GPS Position	N/A	Local Position	-0.628m, 2.339m, 63.002m
Platform Orientation	111°	Platform Inclination	0°
UTC Date & Time	2025-07-18, 08:59:23	Comment	



2.3.6 Inspection Point "Blade C - Suction Side - 3"

Measured Value	2.053 Ω	Nominal Value	-
GPS Position	N/A	Local Position	-0.211m, 2.255m, 65.949m
Platform Orientation	110°	Platform Inclination	0°
UTC Date & Time	2025-07-18, 09:00:48	Comment	

