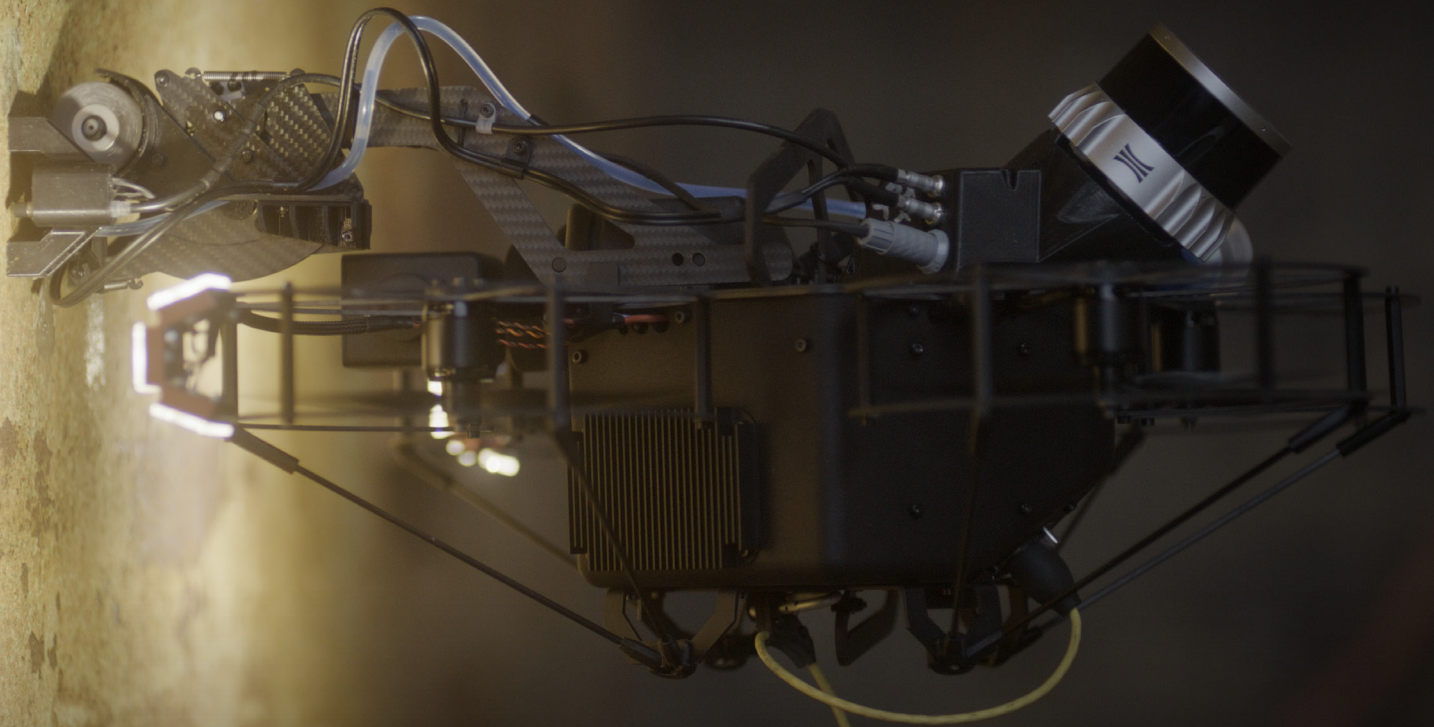


# Fully Digitalized Asset Inspection



## Your data collector for GPS-denied spaces

The Scout 137 Drone System captures continuous, high-precision data in hazardous environments – without sending people inside.

- ∞ Unlimited flight-time
- 🔧 Unique Spot-cleaning UTM payload
- 💡 Survey-grade 3D Lidar as standard
- 📷 Optical zoom camera with autofocus

## Turning data into decisions

The Scout Portal lets you review, visualize, analyze and share your inspection data. All in one place and safely backed up in the cloud.

- 📶 Live streaming and remote collaboration
- 📁 Secure cloud storage, backup and sharing
- 🔍 ML-ready for enhanced data analysis
- 📍 Interactive 3D review with flight path, POI and UTM

# Scout 137 Drone System

## Smart inspection starts here

Our next-generation tethered drone system redefines inspections in GPS-denied spaces with its 3.5x optical zoom camera with autofocus, 128-beam survey-grade Lidar and unlimited flight-time – delivering systematic, high-quality data capture fast, reliably and safely.

Designed for demanding conditions, the lightweight and well-balanced platform offers exceptional stability and intuitive control, even in complex or confined environments. A wide Lidar field of view enables precise navigation and effective obstacle detection in close quarters.

The optional UTM Payload (pat.pend.) has integrated surface preparation, enabling spot cleaning and Ultrasonic Thickness Measurements in one operation, removing the need for tool-switching and spot revisits.

Real-time 3D point cloud visualization, on-screen flight path tracking and POI and UTM markers support safe and confident BVLOS operation, supported by powerful onboard processing enabling autonomy-ready workflows.

**Comprehensive by design,  
with premium performance at exceptional value.**

Scout 137 Drone	
Size & weight (L x W x H)	44.8 x 47.9 x 26.2 cm, 3 kg
Size & weight w/UT Payload	54.2 x 47.9 x 26.2 cm, 3.5 kg
Transport size & weight	63.2 x 60.2 x 33.3 cm, 16 kg
Tether length	Up to 60 m
Flight time	Unlimited
Camera	3.5x optical zoom 4K camera with autofocus
Gimbal	2-axis, adjustable $\pm 90^\circ$ pitch
LED lights	12K+ lumens, 6 panels, multiple modes
Operating temperature range	-20 °C to 50 °C
Navigation system	Real-time Lidar/SLAM-based engine
Lidar range	35 m – 100 m
BVLOS support	Zoom camera, 3D w/path tracking, obstacle minimap
Anti-collision system	Normal, Close, Off
Location-tagged data	Yes
Remote control	Fully wired
Payloads	3.5x optical zoom 4K camera, UTM Payload w/surface prep, Gas Sensor
Max. memory card capacity	512 GB $\approx$ 20 hours of inspection data

Scout Portal, cloud-based data service	
Availability and authentication	Browser and internet + Microsoft® account
Usage modes	Inspection replay and Live Streaming
Storage and backup included in subscription	Yes
Read-only data sharing available	Yes
ML-based anomaly detection	Yes, corrosion detection
Upload and streaming	Resumable uploads via Starlink, 4G or faster

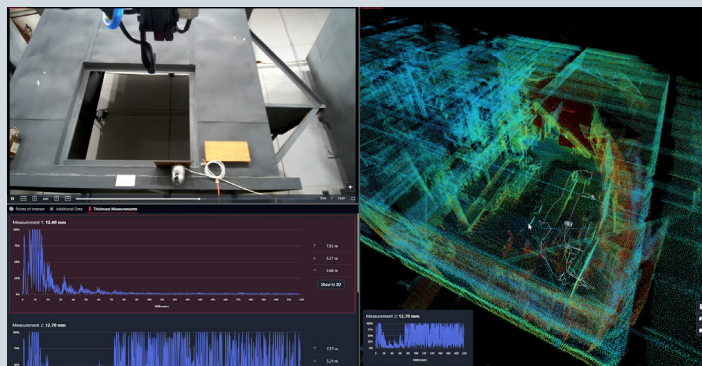
Ground Station, power and transport	
Size & weight	38.5 x 44 x 24.5 cm, 8.8 kg
Voltage and current requirements	200–240 VAC, 50/60 Hz, > 10 A
Max distance, pilot to Ground Station	100 m, using CAT 5e or CAT 6

## Scout Portal

### Your data turned into insights

The Scout Portal transforms raw inspection data into actionable insights, whether streaming live or reviewing. You can track flight paths with all POI and UTM in interactive 3D visualizations.

Extract measurements, provide comments, report and share. Anywhere, anytime. With centralized data and intuitive, efficient tools, the Scout Portal closes the loop between field and office.



### Contact us

Don't hesitate to contact us to discuss your use case. Reach out to ScoutDI headquarters directly or scan the QR code to find your nearest distributor.

**ScoutDI AS**  
Sluppenvegen 25  
7037 Trondheim, NORWAY

Tel: (+47) 73 60 49 90  
sales@scoutdi.com  
[www.scoutdi.com](http://www.scoutdi.com)

