

**SERMON TITLE**

# *Living Out Your Love*

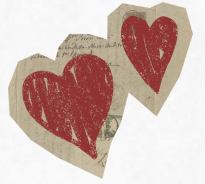
**JOHN 21:15-17**

**BY PTR GLENN PINTUAN**

*INTRO:*

**LIVING OUT-  
WITHSTANDING  
OR PRACTICING  
LOVE**

# What are the meanings and definitions of love?

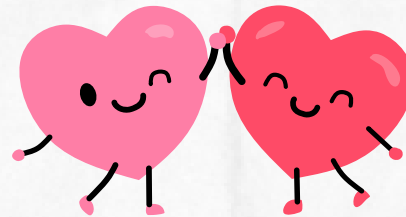


**EROS**

**AGAPE**

**PHILEO**

**PHILADELPHIA**



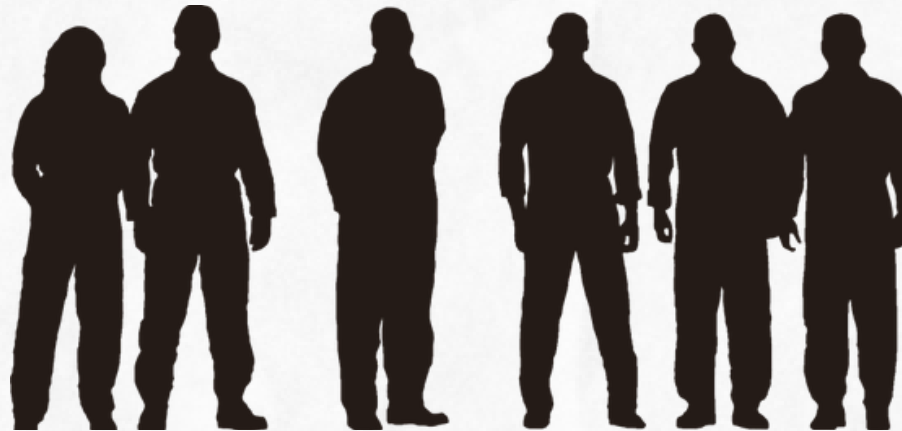
# *EROS*

**IT IS A ROMANTIC  
PASSIONATE  
LOVE  
BETWEEN MAN  
AND WOMAN**

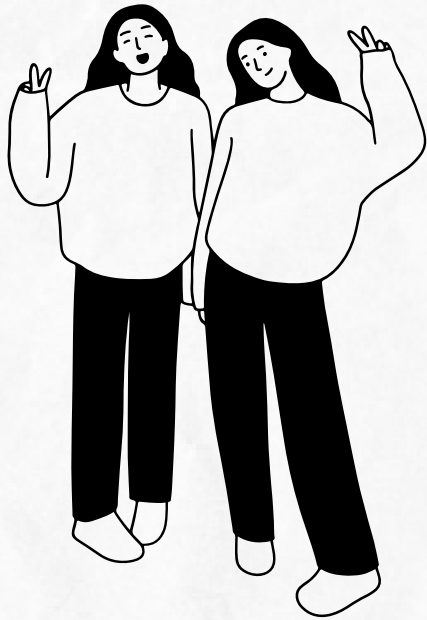


# AGAPE

**CALLS US TO  
LOVE EVERYONE,  
EVEN WHEN IT'S  
HARD.**



# PHILEO



**SHOWS UP IN  
OUR CLOSE  
RELATIONSHIPS,  
FRIENDS  
AND FAMILY.**



# *PHILADELPHIA*

**BUILDS UNITY AND  
CARE IN THE CHURCH  
FAMILY**



**WHEN JESUS ASKS PETER,  
“DO YOU LOVE ME?”  
HE MENTIONED THESE  
WORDS 3 TIMES. BUT THE  
AMAZING THING HERE IS  
THAT THE WORD LOVE HERE  
WAS MENTIONED  
DIVERSELY IN GREEK.**

# I. JOHN 21:15

“DO YOU LOVE  
(**AGAPAO**) ME MORE  
THAN THESE?”

“YES, LORD, I LOVE  
(**PHILEO**) YOU.”

## II. JOHN 21:16

“DO YOU LOVE  
(**AGAPAO**) ME?”

“YES, LORD, I LOVE  
(**PHILEO**) YOU.”

### **III. JOHN 21:17**

**“DO YOU LOVE  
(PHILEIS) ME?”**

**“LORD, YOU KNOW  
EVERYTHING; YOU  
KNOW I LOVE  
(PHILEO) YOU.”**

**ANOTHER MEANING FOR  
THE WORD “AGAPAO” IS  
UNCONDITIONAL,  
SELFLESS, SACRIFICIAL  
LOVE. THIS IS THE KIND OF  
LOVE GOD HAS SHOWN TO  
US WE SHOULD ADAPT  
WHEN WE MATURE.**

**WHILE “PHILEO” IS A  
BROTHERLY AND  
AFFECTIONATE LOVE,  
SOMETHING EMOTIONAL  
AS WELL AS  
FRIENDSHIP-TYPE LOVE.**

*Why these  
truth  
matters?*



**JESUS WANTED PETER TO  
GO ON THE LEVEL OF  
“AGAPAO” THE HIGHEST  
KIND OF LOVE BUT PETER’S  
TWO CONSECUTIVE  
ANSWERS WAS “PHILEO”  
A FRIENDSHIP KIND OF  
LOVE.**

**BY THE THIRD TIME, JESUS  
USED THE WORD “.PHILEIS”  
AND MEETS PETER IN HIS  
PRESENT LEVEL OF LOVE  
WHICH IS “PHILEO”. JESUS  
ACCEPTED PETER’S LOVE,  
EVEN HE IS NOT YET READY  
ON THE LEVEL OF AGAPE.**

**JESUS WANTS PETER  
TO GROW IN LOVE  
FROM “PHILEO”  
BROTHERLY LOVE TO  
“AGAPE”  
SACRIFICIAL,  
UNCODITIONAL LOVE.**

# CONCLUSION

- **THIS IS NOT JUST AN INFORMATIVE MESSAGE BUT MORE ON TRANSFORMATIVE ONE.**
- **JUST LIKE PETER, GOD WANTS US TO START LIVING OUT OUR LOVE FOR JESUS.**

# CONCLUSION

- **LOVING JESUS IS SHOWN BY CARING FOR OTHERS.**
- **SPIRITUAL LEADERSHIP IS ABOUT SERVING AND FEEDING OTHERS WITH TRUTH AND LOVE, NOT JUST AUTHORITY.**

# CONCLUSION

- **IT'S A CALL TO PASTORAL CARE WHETHER YOU ARE A CHURCH LEADER, OR A SMALL GROUP LEADER, OR EVEN A SIMPLE BELIEVER, WE SHOULD SACRIFICE TO CARE FOR OTHERS.**

*We should*  
**LIVE OUT OUR**  
**LOVE FOR**  
**JESUS!**