

# SAI BHAKTI

Plot No.173, Sector-20, Ulwe.





## Project Features

- Clear Title CIDCO Trasfer Plot
- G+7 Storeyed Building
- Residential Cum Commercial Project
- Shops, 1BHK Flats
- CCTV Security Surveillance
- Earthquake Resistant RCC Design
- Lift of Reputed Company
- Loans Available from major Banks & Financial Institutions.

## Amenities

- Designer Vitrified 24"x24" Tiles Flooring.
- Designer Digital Wall Tiles in W/C, Bath Room & Kitchen.
- Bathroom Fittings of Reputed Brands.
- Kitchen Platform with Granite Top and Stainless Steel Sink.
- Decorative Laminated Main Doors with wooden frame.
- Aluminum Louvered / PowderCoated Sliding Windows.
- Concealed Electrical Copper Wiring (ISI) with Circuit Breakers.
- Modular Switches of Reputed make.
- Adequate electrical points in each room.
- Double Coat Plaster and Acrylic Paint on External Walls & Emulsion Paint on Internal Walls.
- Brickbat water proofing treatment for Terrace.
- Underground & Overhead Water Tank.

## Location Features

- 10 Min Walking Distance To Bamandongri Railway Station.
- Nearby Pune, Goa Highway.
- Near Sewri - Nhava Sheva Transharbour Link.
- Near Prop. Navi Mumbai International Airport.
- Nearby Highway Connectivity.
- Easy access to Belapur, Seawoods & Vashi.
- Nearby School, Colleges & Shopping Markets,

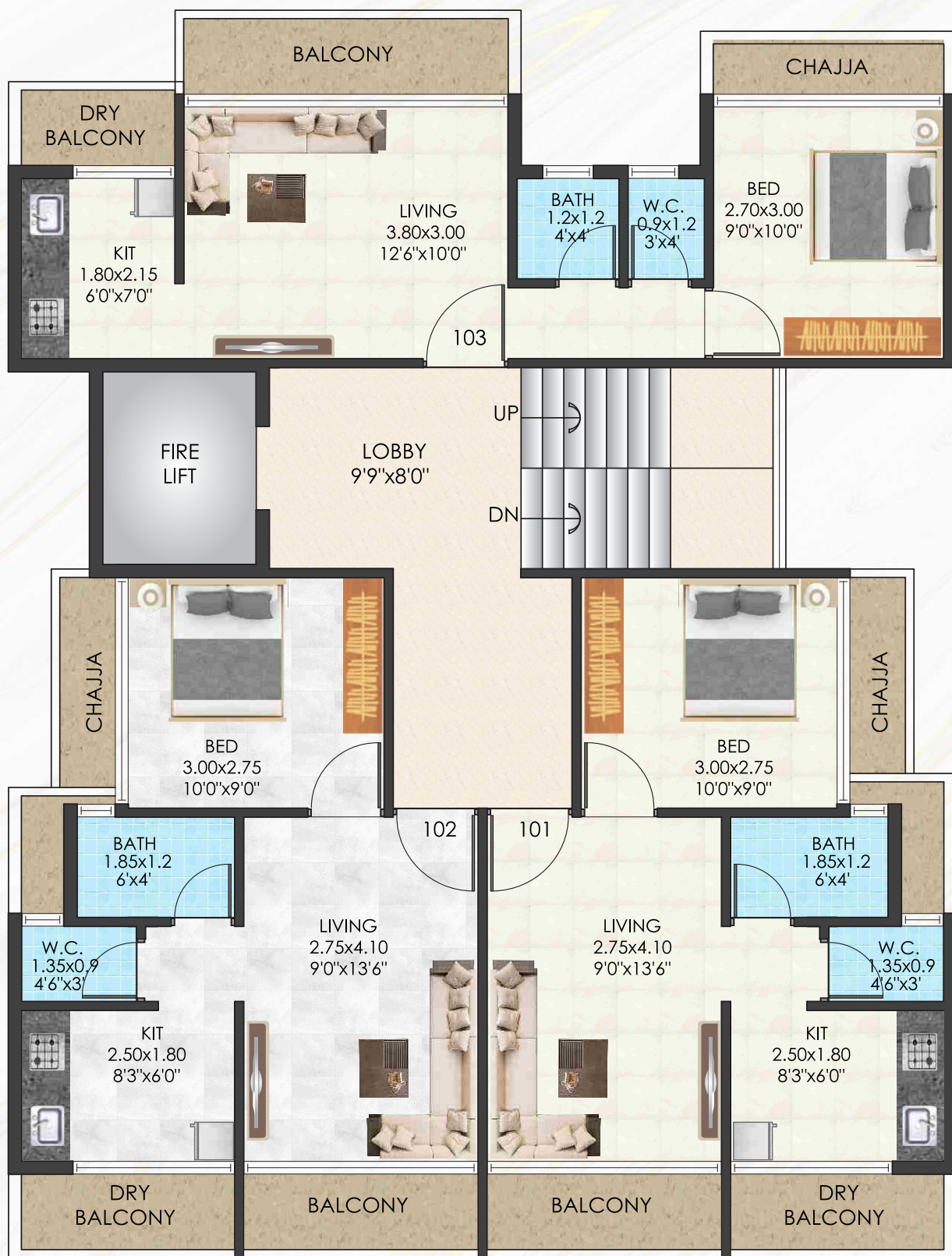






## GROUND FLOOR PLAN





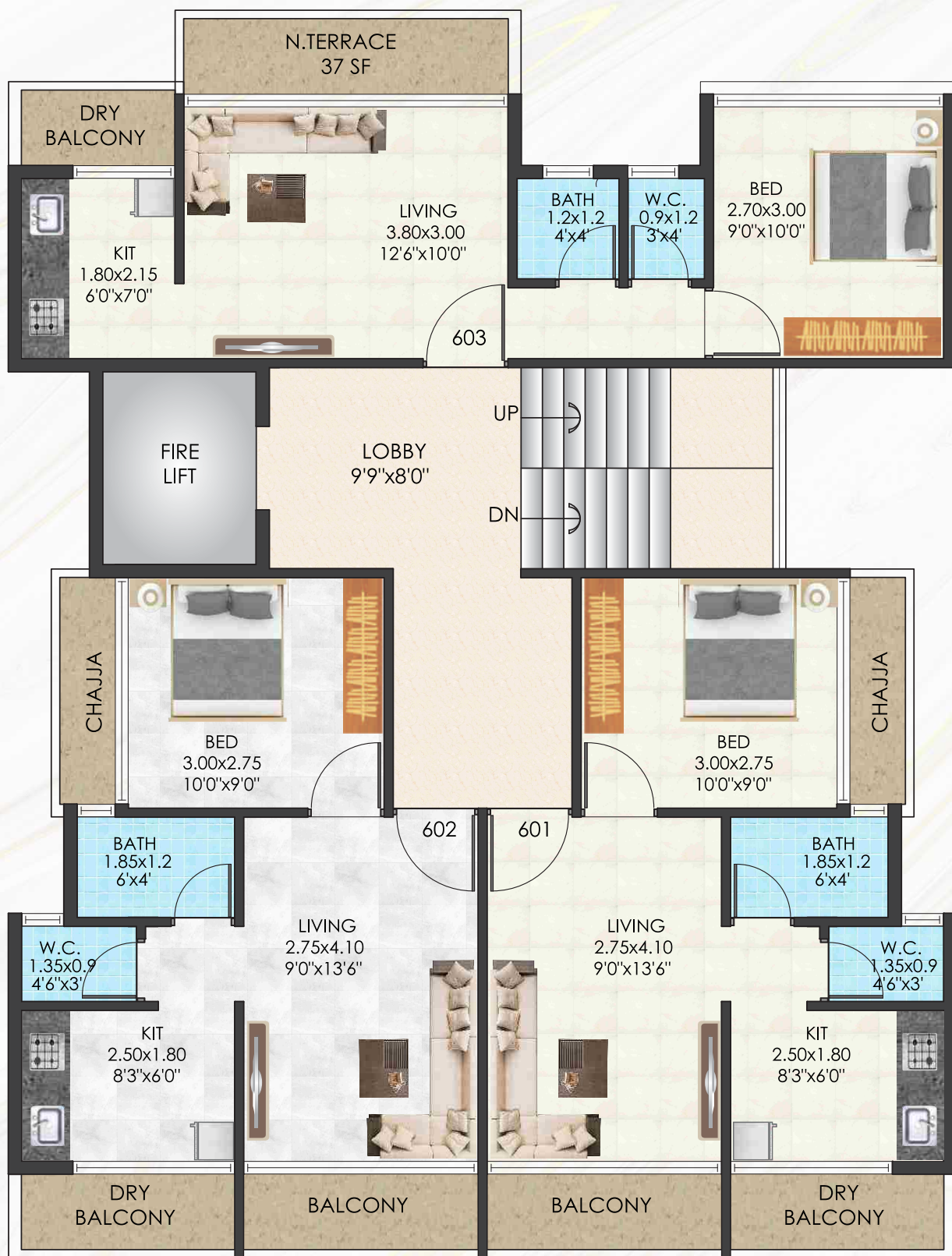
15M WIDE ROAD

**1ST TYPICAL FLOOR PLAN**





2ND TO 5TH TYPICAL FLOOR PLAN



15M WIDE ROAD

## 6TH TYPICAL FLOOR PLAN







15M WIDE ROAD

## 7TH TYPICAL FLOOR PLAN







## ONGOING PROJECTS



### DHARTI RESIDENCY

Plot No. 369, Sector-17,  
Ulwe, Navi Mumbai.



### SIDDHIVINAYAK BHAKTI

Plot No. 190 I & 190 J, Sector-23,  
Ulwe, Navi Mumbai.

Nhava - Sewri Sealink  
(MTHL) Proposed

Project by

# Sai Enterprises

*We build your Dream Home*

Site Add: Plot No. 173, Sector-20, Ulwe, Navi Mumbai.

**7977202271 / 9820255171**

Email: saienterprisesplotno173@gmail.com

RCC Consultant  
S. R. Consultants



**Maha RERA Reg. No. P52000048727**

Details Available on <https://maharera.mahaonline.gov.in/>



Architect  
**ATUL PATEL**  
ARCHITECTS

Disclaimer : All Plans, Drawing, Amenities, Facilities Etc. Are subject to approve of the respective authorised it would be changed, it necessary, They this creation remain with the developer. All rendering Pictures & Maps are the artist constructions & not actual depictions of the plot, roadways are landscaping. The brochure is for guidance & not a legal document the brochure should also reproduced, copied or made available other any form of transmission. The design & specification depicted in the brochure are subject to change without prior notice. Proposed development as mentioned in the brochure is subject to approved of complete authorities .