



Dharti Residency

Plot No. 369, Sector-17, Ulwe.

Project Features

- CIDCO Trasfer Plot
- G+7 Storeyed Building
- Residential Project
- 1RK & 1BHK Flats
- Earthquake Resistant RCC Design
- CC TV Security
- Lift of Reputed Company



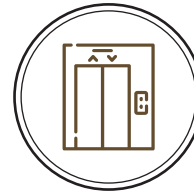
CIDCO Transfer Plot



CCTV Security



RESIDENTIAL



LIFT



Loans Available



Amenities

- Designer Vitrified 32"x32" Tiles Flooring.
- Designer Digital Wall Tiles in W/C, Bath Room & Kitchen.
- Bathroom Fittings of Reputed Brands.
- Kitchen Platform with Granite Top and Stainless Steel Sink.
- Aluminum Louvred / Fixed Glass Sliding Windows.
- Concealed Electrical Copper Wiring (ISI) with Circuit Breakers.
- Modular Switches of Reputed make.
- Adequate electrical points in each room.
- Double Coat Plaster and Acrylic Paint on External Face of Building.
- Red Brick Wall.

Location Features

- 10 Min Walking Distance To Kharkopar Railway Station
- Near Sewri - Nhava Sheva Transharbour Link
- Near Prop. Navi Mumbai International Airport
- Highway Connectivity



Highway



Airport



Railway Station



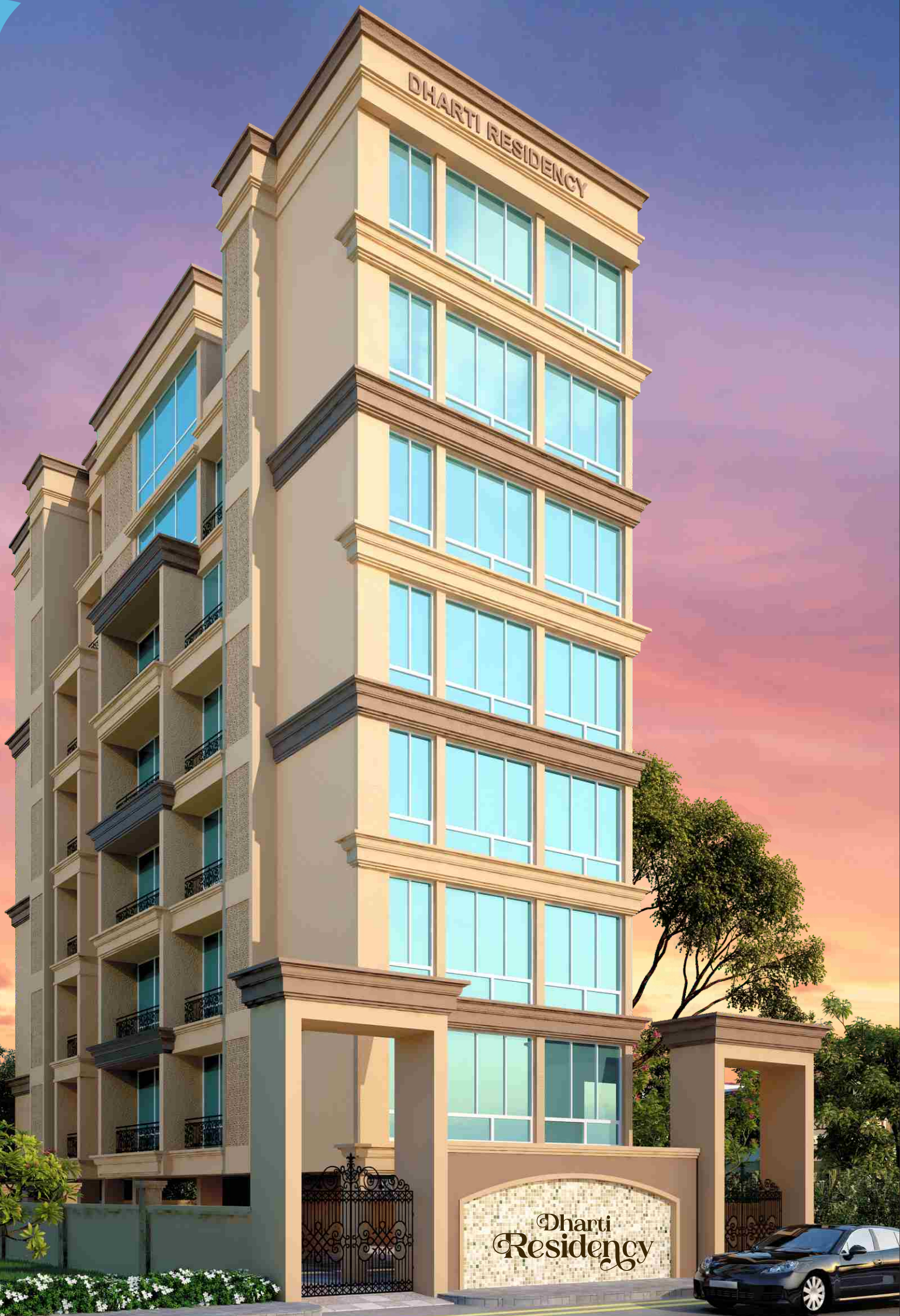
Harbour Link

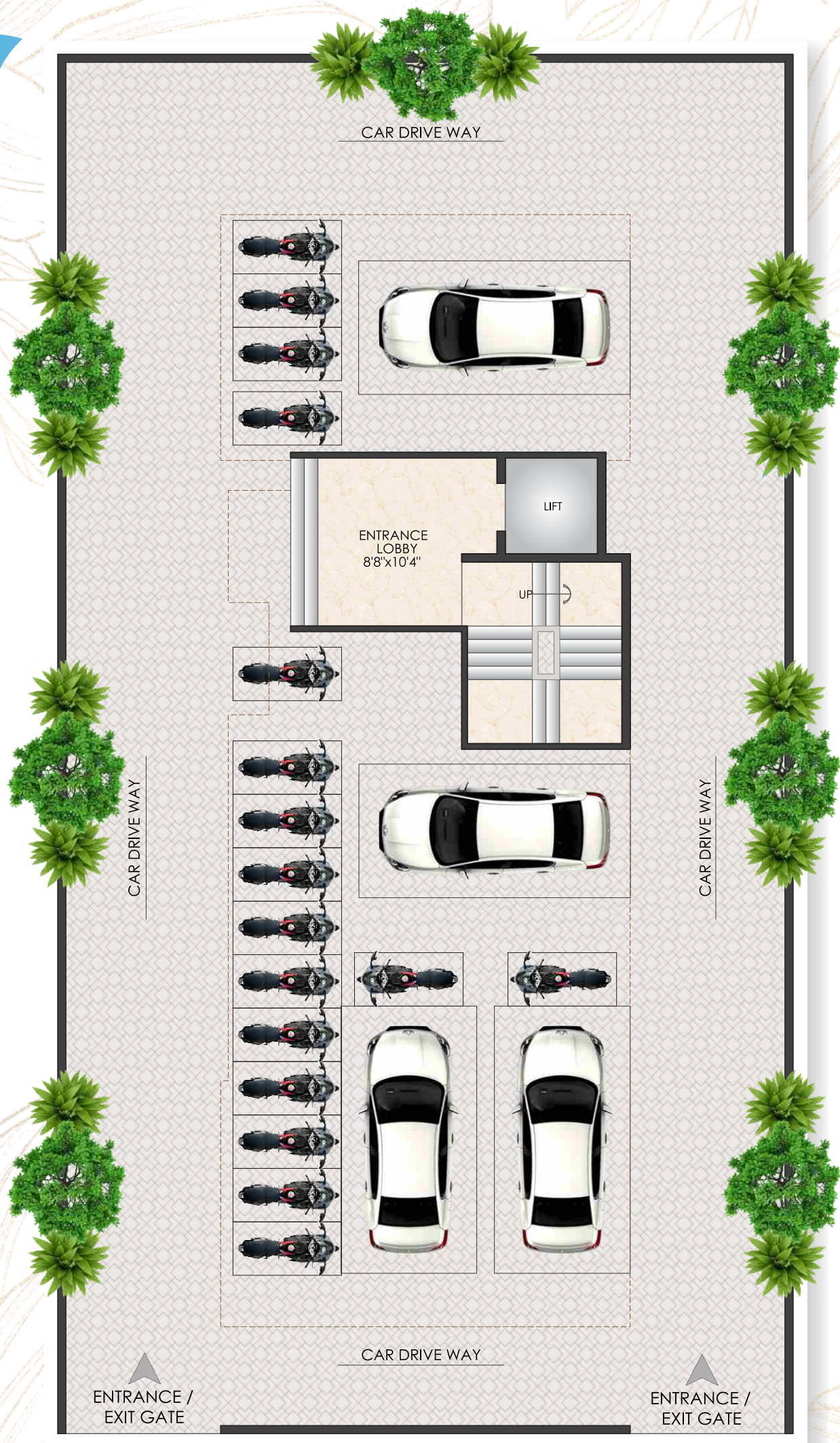


School Colleges



Markets

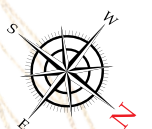




9M WIDE ROAD

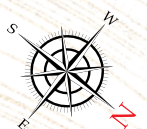


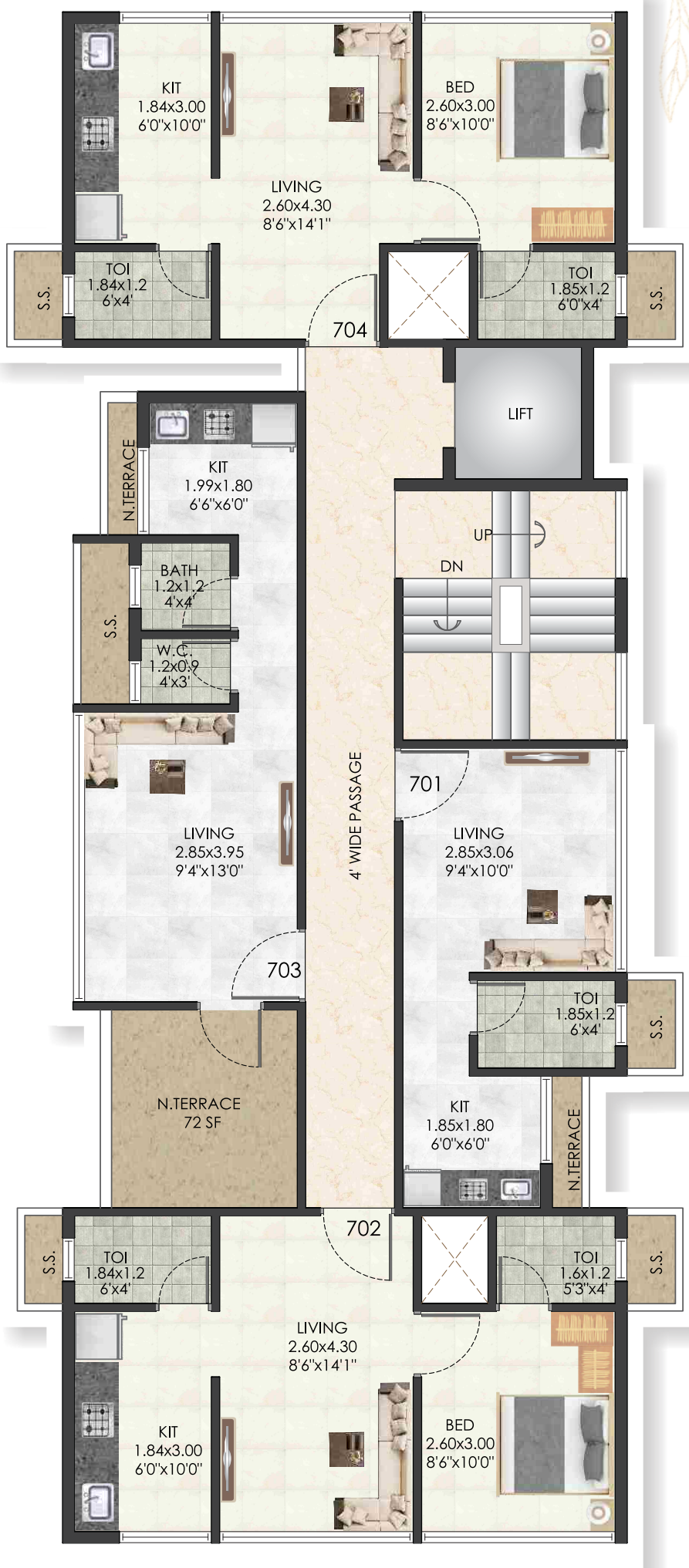
9M WIDE ROAD



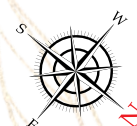


9M WIDE ROAD





9M WIDE ROAD



COMPLETED PROJECTS



DHARTI VIHAR SECTOR-08



DHARTI VILLA SECTOR-17



DHARTI SAGAR SECTOR-20



DHARTI AMRUT SECTOR-20



Project by

Dharti Infra

Office Add: Plot No. 369, Sector-17, Ulwe, Navi Mumbai

☎ 9819892013 / 9820255171

Email: dhartiinfra369@yahoo.com

RCC Consultant
S. R. Consultants



Maha RERA Reg. No. P52000046060

Details Available on <https://maharera.mahaonline.gov.in/>

Architect



ATUL PATEL
ARCHITECTS

Disclaimer : All Plans, Drawing, Amenities, Facilities Etc. Are subject to approve of the respective authorised it would be changed, if necessary. They this creation remain with the developer. All rendering Pictures & Maps are the artist constructions & not actual depictions of the plot, roadways are landscaping. The brochure is for guidance & not a legal document the brochure should also reproduced, copied or made available other any form of transmission. The design & specification depicted in the brochure are subject to change without prior notice. Proposed development as mentioned in the brochure is subject to approved of complete authorities .