

Supported By:  
**MSME**

**iCONEQ**  
INTERNATIONAL MINING & CONSTRUCTION EXPO

Dr. Shyama Prasad Mukherjee  
International Convention Center  
Naya Raipur,  
Chhattisgarh India, 492101

**11th, 12th, 13th & 14th March 2026**



# International Mining & Construction Machinery EXPO

**2026**

Industry: Mining, Construction, Equipment Manufacturer, Machine Rental, Spare Parts & Contractors



**ICONEQ** is a leading company in India that specializes in organizing exhibitions for the mining, construction, infrastructure, and real estate industries. With a team of experienced professionals and a strong network of industry partners, we strive to create impactful and successful exhibitions that bring together industry leaders, professionals, and stakeholders. Our exhibitions provide a platform for businesses to showcase their products, services, and innovations, connect with potential customers, and explore new business opportunities. We are committed to driving growth, fostering collaboration, and shaping the future of these industries. We are organising an International Mining & Construction Expo at Raipur Chhattisgarh India for the Second time. you are cordially invited to participate the exhibition in April 2026. Venue Dr. Shyama Prasad Mukherjee, International Convention Center, Naya Raipur, Chhattisgarh, India, 492101 .

### Chairman

**Abhishek kumar Pandey**  
Chairman-Indian Mining & Construction  
Association (IMCA)  
MD-Pultvizor Machinery Pvt Ltd

### General Secretary

**Tekhan Sinha**  
Secretary-Indian Mining & Construction  
Association (IMCA)  
Director-VE Enterprises

#### Exhibitors Profile:

- Asphalt Equipment
- Accessories of Machineries
- Air & Screw Compressors
- Stone Crushing Equipments
- Compactors
- Control Panels
- Concrete Equipment Manufacturer's
- Construction Equipment
- Construction Field
- Drill, Power Tools
- Diesel Generators
- Electronics
- Earth Moving Equipment's
- Heavy Engines
- Hydraulic Pipes & Fittings
- Instruments
- Information Technology
- Lubricants
- Mining & Construction Machines/Equipments
- Material Handling Equipment
- Pneumatics Machines
- Piling equipment, Pumps, Rollers etc
- Service Sectors
- Leasing & Financing
- Spare Parts & Consumables
- Packaging & Forwarding
- Transports & Logistics
- Motors & Cables



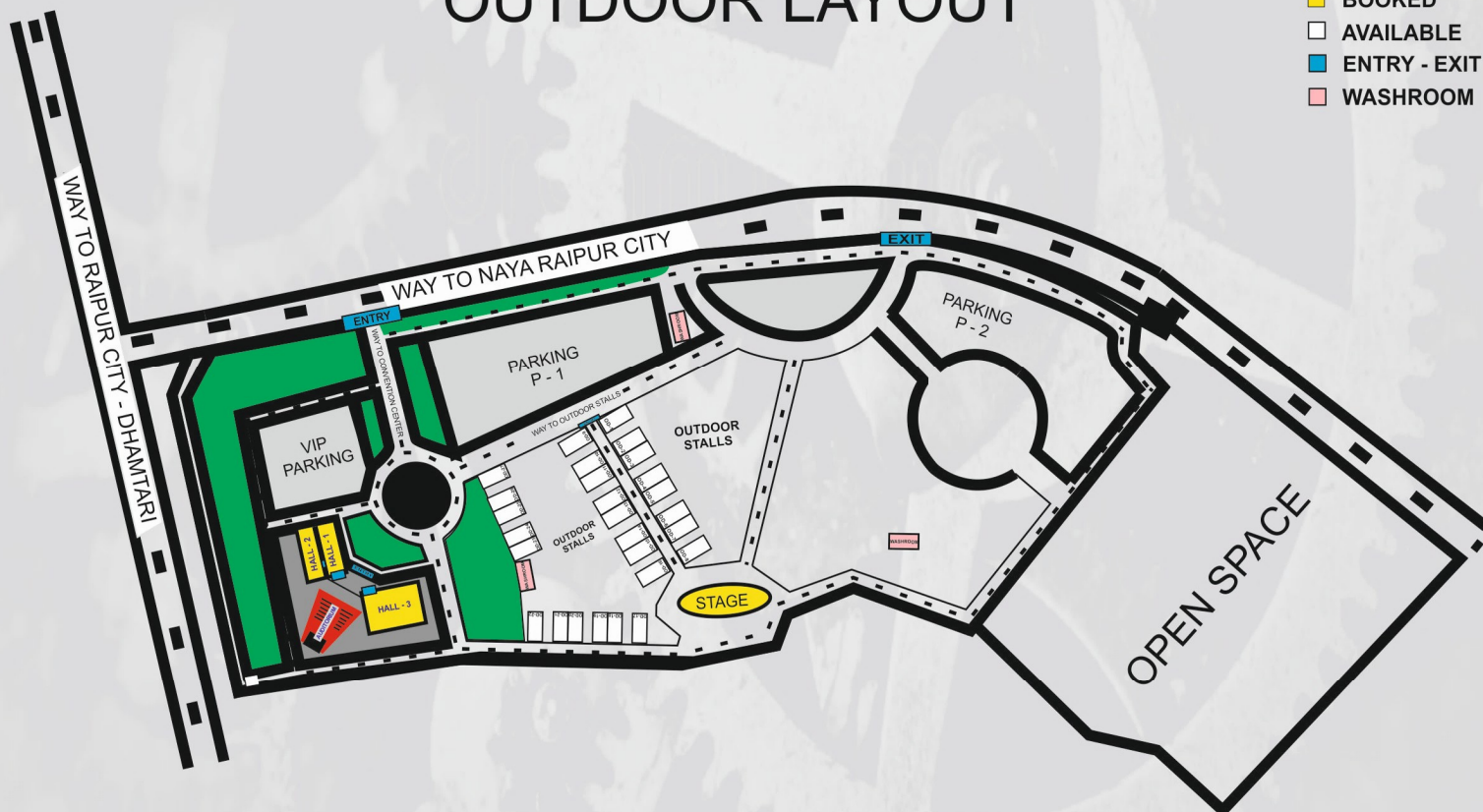
#### Visitors Profile:

- Mining contractors
- Construction Equipment Manufacturers
- Machine Owners
- Investors
- Contractors
- Finance Companies
- International Companies
- Sponsors
- Government Officials
- Print & Electronic Media
- Parts Dealer & Manufacturers

#### About Exhibition:

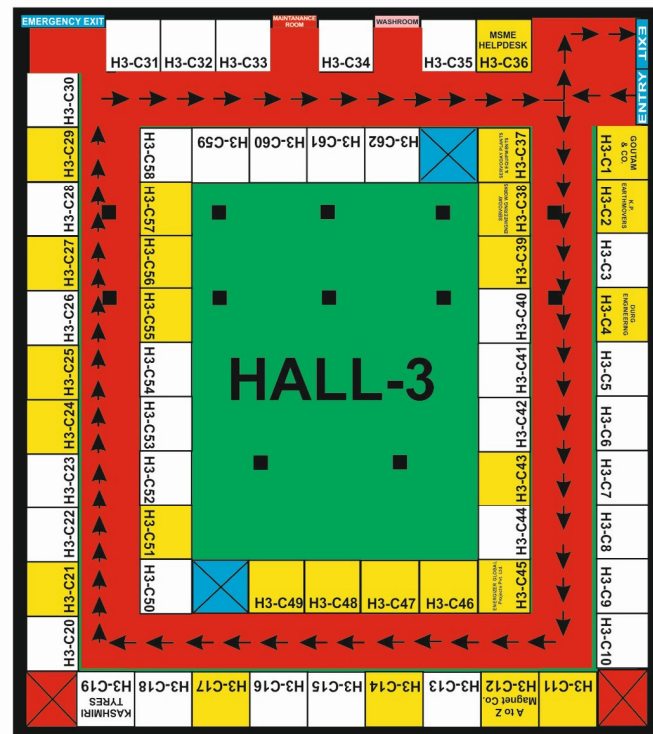
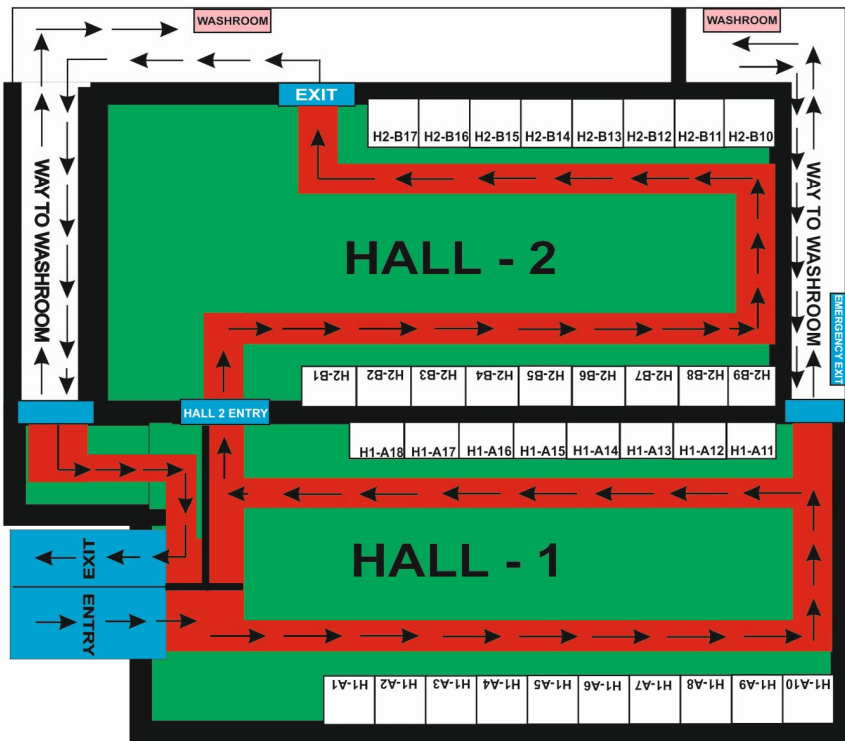
- 1,00,000 Square Meter Exhibition Area
- 150 Business Exhibitors
- 10,000+ Business Visitors
- B2B Meeting
- Business Meeting with Financer's
- Join IMCA

## OUTDOOR LAYOUT





# INDOOR LAYOUT



## Indoor Optimum Built Up Space:-

Space Area in Square mtrs	Rate Per 9 Square mtrs in Indian Rupees (₹)	Space Area in Square mtrs in US Dollars (\$)
3x3=9 Sq. Mt.	74,000.00 (GST 18% Included)	807.04

## Indoor Jumbo Space:-

Space Area in Square mtrs	Rate Per Square mtrs in Indian Rupees (₹)	Space Area in Square mtrs in US Dollars (\$)
34 to 50	6,400.00 (GST 18% Included)	71.15
51 to above	5,900.00 (GST 18% Included)	65.60



\*MSME Gov. Subsidy

## Outdoor Space:-

Space Area in Square mtrs	Rate Per Square mtrs in Indian Rupees (₹)	Space Area in Square mtrs in US Dollars (\$)
150 to 250	1,500.00 (GST 18% Included)	18.00
300 to above	900.00 (GST 18% Included)	11.00



All the space & stall charges are excluding applicable GST and Electricity charges.  
 Booked space can be changed at new location in the Exhibition with prior notice.  
 Exhibitor has to pay 100% advance before tax invoicing. GST certificate is mandatory.  
 For International Exhibitor : Cancellation of space/stall is not applicable after booking of space/stall.  
 For Indian Exhibitor : Cancellation of space/stall will be according to cancellation policy of the company.  
**MSME Registered Companies will get special discounts, Exhibitors have to submit all the documents and MSME certificate to take the benefit.**  
 Terms & conditions apply.  
 Held in April 2026.

Organised by:

Shivanta Engineering

Supported by:

Indian Mining & Construction  
Association (IMCA)

**iCONEQ**  
INTERNATIONAL MINING & CONSTRUCTION EXPO

Supported By:  
**MSME**

Powered by:  
**PULTVIZOR®**  
*Nothing But Beneficial*

We are supporting:



Associate Partner



Supporting Association



Media Partner



Presented By



Associate Sponsors



Banking Partners



**iconeq**  
International Mining & Construction Expo  
**11, 12, 13 & 14 th March 2026**

Address:

Dr. Shyama Prasad Mukherjee, International  
Convention Center, Naya Raipur, Chhattisgarh,  
India, 492101

Email:  
info@iconeq.in

Mob:  
+91 9827973743, +91 9981638564



www.iconeq.in