



Accessories > washer > Saddle washer

Saddle washer

Aluminium saddle washers with bonded EPDM seal.



Description

High-quality aluminium saddle washer with a bonded EPDM sealing layer, specially designed for crown fixing of roof sheets. Provides excellent load distribution and long-term waterproof sealing, ensuring secure and durable roof installations.

Key Features

Ensures watertight sealing at fixing points

Distributes load evenly to prevent sheet damage

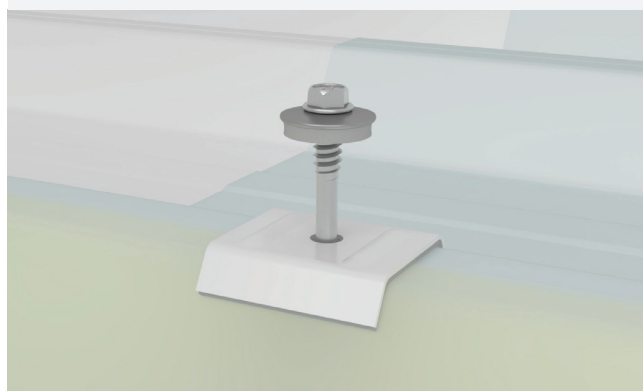
Resistant to corrosion and rust

EPDM seal remains flexible under temperature changes

Ideal for long-term outdoor use

Application

Roofing / Corrugated Sheets / Sandwich panels



Technical parameters

Length	L (mm)	40
Flange width	W (mm)	28
Profile angle	a	38°
Metal Part Material	Aluminum	
Metal Thickness	0.8 mm	
Rubber Material	Grey EPDM	
EPDM Thickness	2 mm	
Finish	RAL 9002	

Technical drawings

