



Accessories > Screw > Self Drilling Screw > DFR-10633

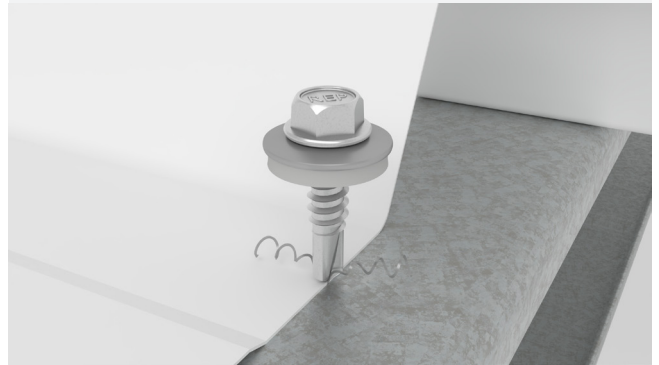
DFR-10633

-EPDM Bonded Sealing Washer-



Application

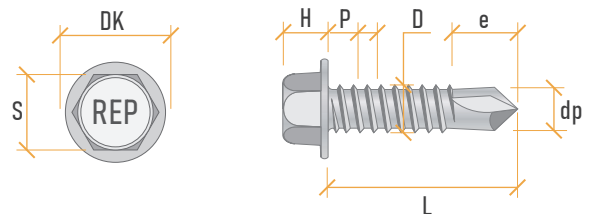
Roofing / corrugated sheets / Sandwich panels



Technical parameters

Drive Type	Hex Washer Head	SW10
Screw Diameter	D (mm)	6.3
Drilling capacity	T (mm)	DP3 6
Material	Carbon Steel	
Thread Type	Full Thread	BSD-TPI (1.81 mm)
Surface	Zinc Plated / 1000H Ruspert	

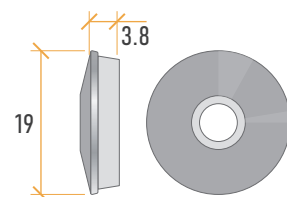
Technical drawings



Hex Washer Head Self-Drilling Screw	Head Diameter		Hex Width		Head Thickness		Thread Outer Diameter		Thread Pitch	Drill Point Diameter		Drill Point Length		Total Length	
	DK		S		H		D		P	dp		e		L	
	min	max	min	max	min	max	min	max	ref	min	max	min	max	min	max
M 6.3 x 25	12.2	13.2	9.3	9.55	5.3	5.9	6.03	6.25	1.81	5.6	5.7	8	9	24	26

EPDM Bonded Sealing Washer

High-quality bonded washer with 1.0 mm stainless steel backing and 2.8 mm gray EPDM rubber layer, designed to provide excellent sealing performance, superior resistance to water, UV, ozone, and weather conditions, making it ideal for roofing, cladding, and steel structure applications.



Bonded Sealing Washer	Outer Diameter	Metal Part Material	Metal Thickness	Rubber Material	EPDM Color	EPDM Thickness	Weather / UV Resistance	Water Sealing
	Φ 19 mm	S.S.304	1 mm	EPDM	GREY	2.8 mm	Excellent	Excellent