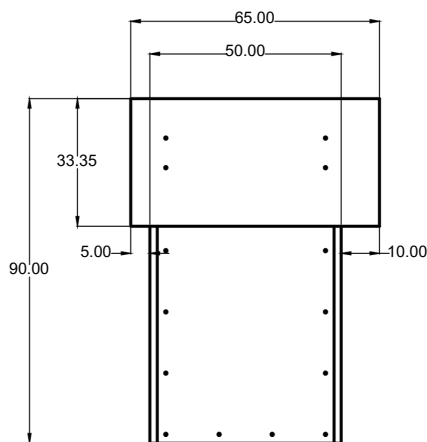
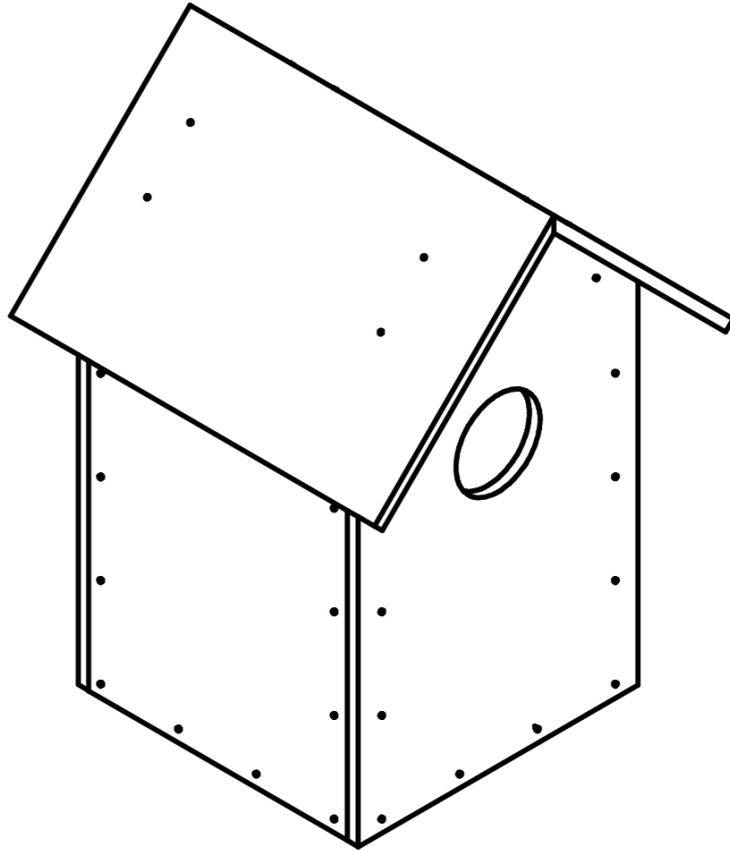




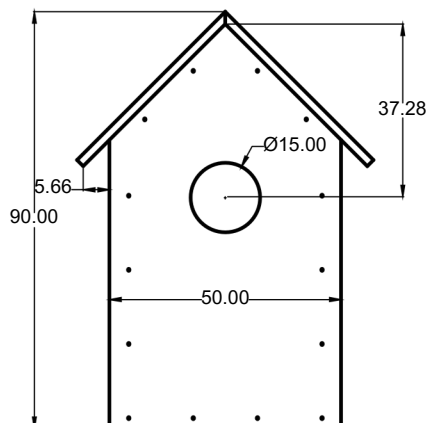
## Instruction Manual

# Roof-Type Artificial Nest

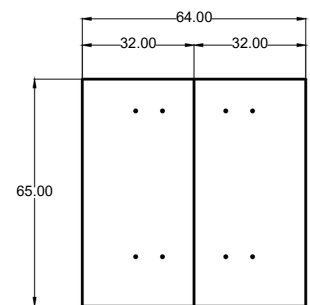
The roof-type artificial nest features a slanted or pitched roof design that helps deflect rain and protect the nest from direct sunlight and harsh weather.



**SIDE VIEW**



**FRONT VIEW**



**TOP VIEW**



# Roof-Type Artificial Nest

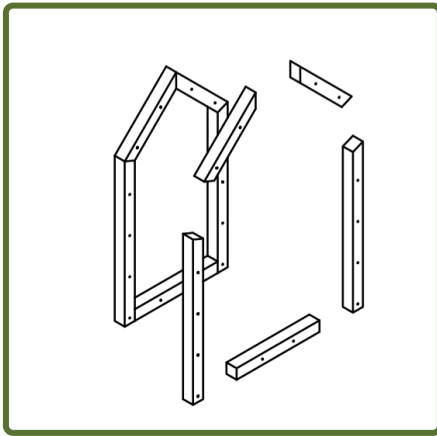
**Materials Needed:** Palochina wood (Philippine mahogany), galvanized nails, sand paper

**Tools Needed:** Saw, screw driver, electric drill, hammer

**Reminder:**

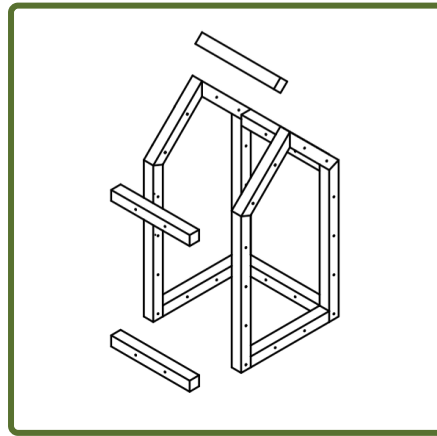
- Always wear protective gloves and safety goggles when using tools like saws, drills, and hammers.
- Keep fingers clear of sharp tools and nails during assembly.
- Ensure all wooden edges are sanded to prevent splinters.
- Children should only assist under adult supervision.

## Step-by-step Guide Manual



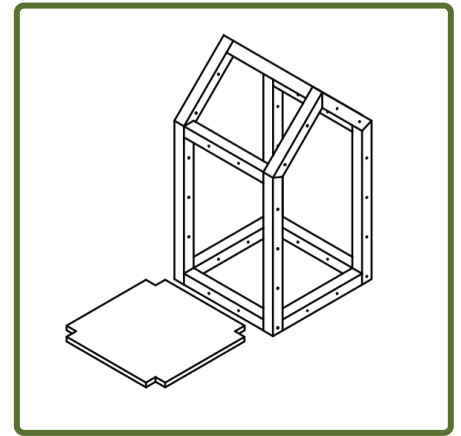
### Step 1

Start by assembling the side frames using vertical and horizontal wooden supports, forming two rectangular structures.



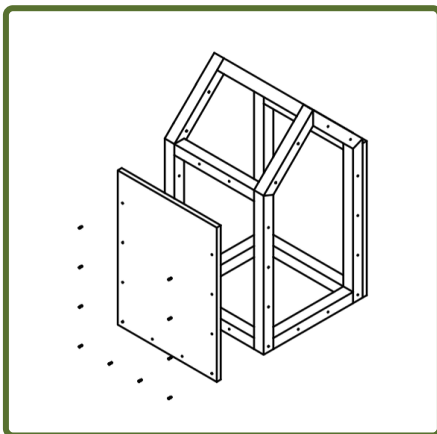
### Step 2

Connect the side frames by attaching the top and bottom horizontal supports to form a box-like frame.



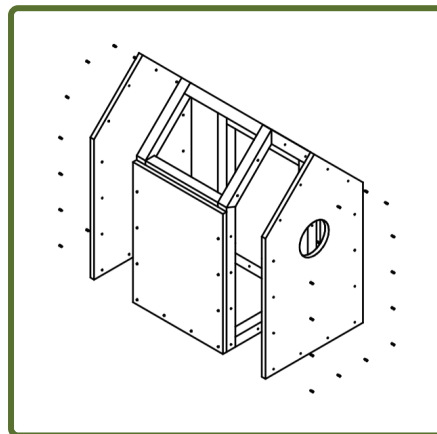
### Step 3

Attach the bottom panel to the base of the frame, ensuring it's securely aligned with the structure.



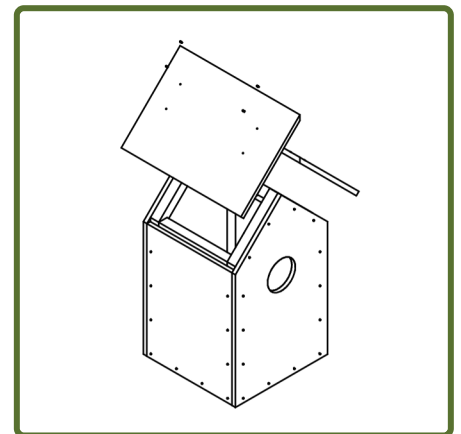
### Step 4

Fix the back panel in place, followed by attaching the front panel which includes the bird entrance hole.



### Step 5

Secure all sides with screws or nails to reinforce the structure and ensure it's sturdy and enclosed.



### Step 6

Lastly, install the slanted roof panels, allowing for a slight overhang to protect the nest from rain.