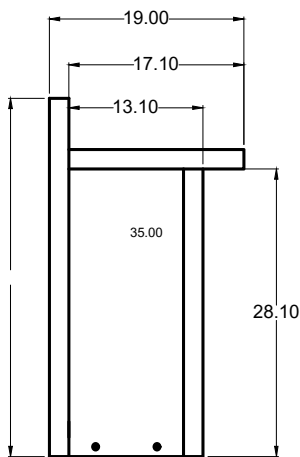
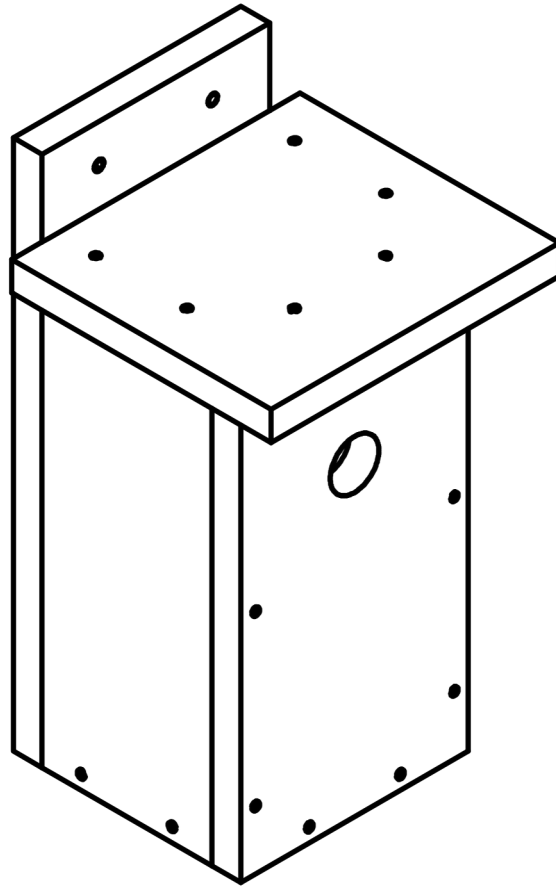




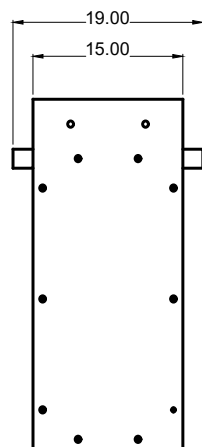
Instruction Manual

Box-Type Artificial Nest

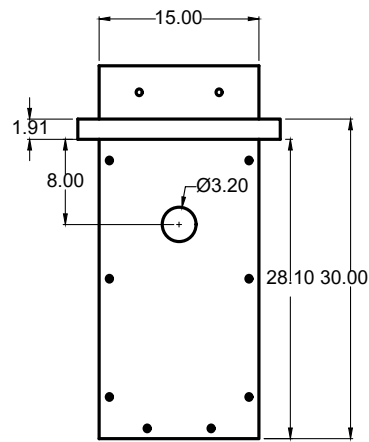
The box-type artificial nest is a simple, enclosed wooden structure designed to replicate the natural nesting cavities found in trees.



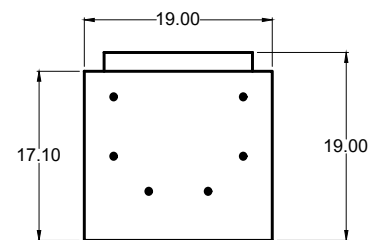
LEFT-SIDE VIEW



REAR VIEW



FRONT VIEW



TOP VIEW



Box Type Artificial Nest

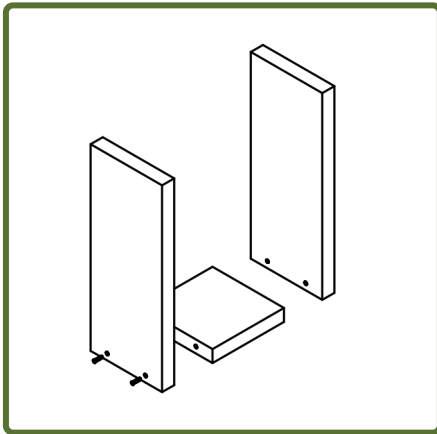
Materials Needed: Palochina wood (Philippine mahogany), galvanized nails, sand paper

Tools Needed: Saw, screw driver, electric drill, hammer

Reminder:

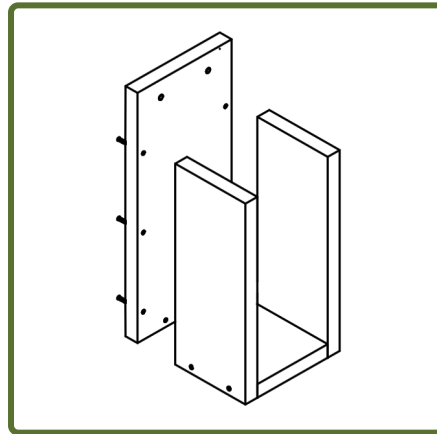
- Always wear protective gloves and safety goggles when using tools like saws, drills, and hammers.
- Keep fingers clear of sharp tools and nails during assembly.
- Ensure all wooden edges are sanded to prevent splinters.
- Children should only assist under adult supervision.

Step-by-step Guide Manual



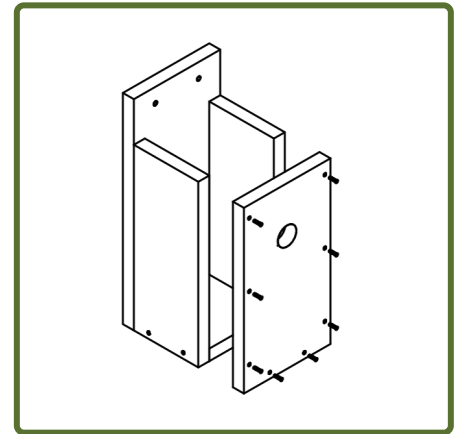
Step 1

Start by positioning the bottom panel between the two side panels. Align the edges properly to create a stable base.



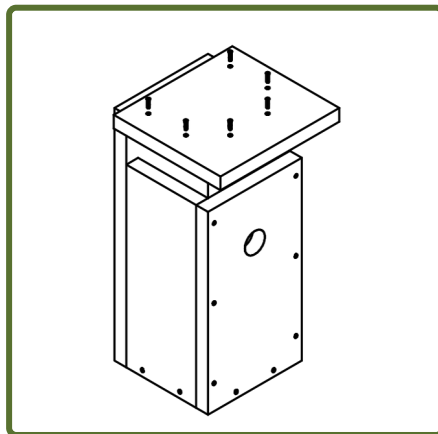
Step 2

Secure the side panels to the base using screws or nails, forming a U-shaped structure that serves as the main frame.



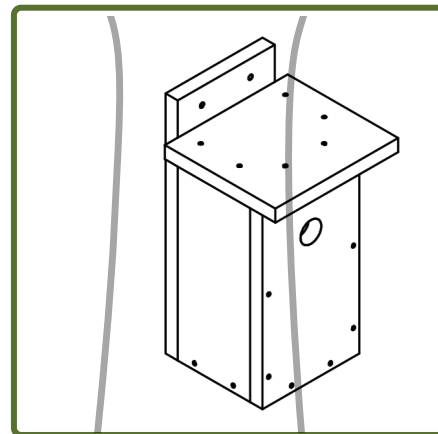
Step 3

Attach the front and rear panels. Make sure the front panel's entrance hole is facing outward and everything fits tightly.



Step 4

Place and fasten the roof panel on top, ensuring it overhangs slightly to protect the nest from rain.



Step 5

Once the nest is finish, mount the nest 3-10meters above the ground.