

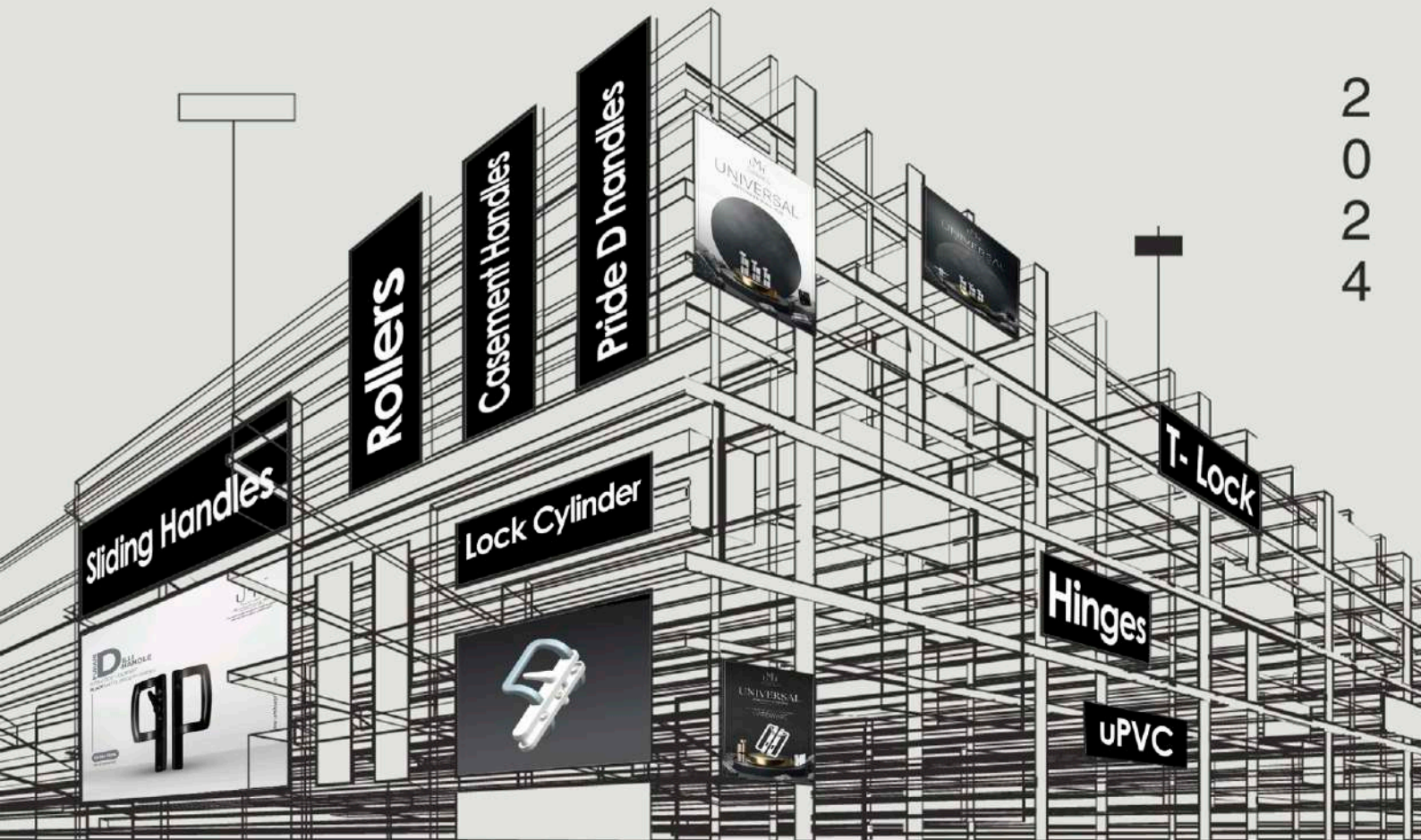
# UMH<sup>®</sup>

*Universal  
Merchandising Hub*  
THE PERFECT CHOICE

MANUFACTURER/EXPORTER/SUPPLIER

## Doors & Windows Hardware

Quality that unlocks doors to enduring satisfaction



2  
0  
2  
4

# ISO Certificate



## Certificate of Registration

This is to certify that

**UNIVERSAL MERCHANDISING HUB**  
 GF, 1715, U.E, SECTOR 04, GURGAON, HARYANA -122001, INDIA

has been independently assessed by QRO  
 and is compliant with the requirement of:

**ISO 9001:2015**

**Quality Management System**

For the following scope of activities:

MANUFACTURER, MERCHANT EXPORTER AND TRADER OF HARDWARE PRODUCTS FOR PVC, WOODEN/ALUMINIUM DOORS & WINDOWS, LOCK CYLINDERS, LOCK BODY, HANDLES, ROLLERS, HINGES, SANITARY BATH FITTINGS I.E. FAUCETS, FAUCET HANDLES, BATH ACCESSORIES, CERAMIC BASIN & SEATS, MARBLE BASIN & BATH TUBS, SHAWLS, CARPETS, MARBLE, WOODEN HANDICRAFTS AND OTHER ALLIED PRODUCTS UNDER THE BRAND NAME OF (THE UHM TUTTY TALES).

MANUFACTURER, MERCHANT EXPORTER AND TRADER OF SPICES, HONEY, TEA MASALA, ORGANIC SPICES AND FMCG PRODUCTS UNDER THE BRAND NAME OF (THE UHM NUTTY TALES).

Date of Certification: 15th February 2023      2<sup>nd</sup> Surveillance Audit Due: 14th February 2025  
 1<sup>st</sup> Surveillance Audit Due: 14th February 2024      Certificate Expiry: 14th February 2026

Certificate Number: 305023021533Q



*Signature*  
 Head of Certification

Validity of this certificate is subject to annual surveillance audits to be done successfully on or before 360 days from date of the audit. In case surveillance audit is not allowed to be conducted, this certificate shall be suspended / withdrawn. The Validity of this certificate can be verified at [www.qrocert.org](http://www.qrocert.org). This certificate of registration remains the property of QRO Certification LLP and shall be returned immediately upon request.

India Office : QRO Certification LLP  
 142, 1st Floor, Arav Enclave, Near Panchsheel Vihar Metro Station, Delhi-110063, (INDIA)  
 Website : [www.qrocert.org](http://www.qrocert.org), E-mail : [info@qrocert.org](mailto:info@qrocert.org)



## Certificate of Registration

This is to certify that

**UNIVERSAL MERCHANDISING HUB**  
 GF, 1715, U.E, SECTOR 04, GURGAON, HARYANA -122001, INDIA

has been independently assessed by QRO  
 and is compliant with the requirement of:

**ISO 14001:2015**

**Environmental Management System**

For the following scope of activities:

MANUFACTURER, MERCHANT EXPORTER AND TRADER OF HARDWARE PRODUCTS FOR PVC, WOODEN/ALUMINIUM DOORS & WINDOWS, LOCK CYLINDERS, LOCK BODY, HANDLES, ROLLERS, HINGES, SANITARY BATH FITTINGS I.E. FAUCETS, FAUCET HANDLES, BATH ACCESSORIES, CERAMIC BASIN & SEATS, MARBLE BASIN & BATH TUBS, SHAWLS, CARPETS, MARBLE, WOODEN HANDICRAFTS AND OTHER ALLIED PRODUCTS UNDER THE BRAND NAME OF (THE UHM TUTTY TALES) & MANUFACTURER, MERCHANT EXPORTER AND TRADER OF SPICES, HONEY, TEA MASALA, ORGANIC SPICES AND FMCG PRODUCTS UNDER THE BRAND NAME OF (THE UHM NUTTY TALES).

Date of Certification: 16th February 2023      2<sup>nd</sup> Surveillance Audit Due: 15th February 2025  
 1<sup>st</sup> Surveillance Audit Due: 15th February 2024      Certificate Expiry: 15th February 2026

Certificate Number: 305023021648E



*Signature*  
 Head of Certification

Validity of this certificate is subject to annual surveillance audits to be done successfully on or before 360 days from date of the audit. In case surveillance audit is not allowed to be conducted, this certificate shall be suspended / withdrawn. The Validity of this certificate can be verified at [www.qrocert.org](http://www.qrocert.org). This certificate of registration remains the property of QRO Certification LLP and shall be returned immediately upon request.

India Office : QRO Certification LLP  
 142, 1st Floor, Arav Enclave, Near Panchsheel Vihar Metro Station, Delhi-110063, (INDIA)  
 Website : [www.qrocert.org](http://www.qrocert.org), E-mail : [info@qrocert.org](mailto:info@qrocert.org)



**MSME**  
 MICRO, SMALL & MEDIUM ENTERPRISES  
 सूक्ष्म, लघु एवं मध्यम उद्यम  
 OUR STRENGTH • हमारी शक्ति

Ministry of MSME, Govt. of India

Udyam registration number: UDYAM-HR-05-0033713

Universal Merchandising Hub  
 THE PERFECT CHOICE  
 MANUFACTURER, EXPORTER AND SUPPLIER

## TABLE OF CONTENT

1. CASEMENT HANDLES	06
2. DOOR HANDLE SET	10
3. SLIDING HANDLE	12
4. SLIDING D HANDLE	15
5. SLIDING ROLLERS	22
6. LOCK CYLINDERS	23
7. CASEMENT TRANSMISSION GERA ROD SERIES	31
8. HINGES	35
9. LOCK BODIES	37
10. ACCESSORIES	40
11. GASKETS	42



## ABOUT US

Welcome to Universal Merchandising Hub, where our reputation is founded on a team of experienced professionals with over 25 years of collective expertise in manufacturing. We also specialize in manufacturing and exporting high-quality products. Since our inception in 2021, we've earned trust as a leading brand known for quality and ingenuity

## MISSION

At Universal Merchandising Hub, our mission is to seamlessly blend skillful artistry with cutting-edge technology in our manufacturing process, delivering high-quality products that consistently exceed the expectations of our diverse clientele. Proudly made in Bharat, our products are crafted using only the finest materials, sourced meticulously to ensure excellence at every step. As both manufacturer and supplier, we uphold an unwavering commitment to quality, evident in each item bearing the Universal Merchandising Hub name

## VISION

At Universal Merchandising Hub our vision is to enhance every space with innovative and high-quality door and window hardware. We aim to blend cutting-edge technology with timeless design, creating products that elevate both aesthetics and functionality. Committed to sustainability and excellence, we strive to be the preferred choice for architects, builders, and homeowners, transforming everyday interactions into moments of effortless elegance and reliability.

## MANUFACTURING

Welcome to Universal Merchandising Hub, we pride ourselves on delivering high-quality products crafted through a meticulous manufacturing process. Collaborating closely with a network of esteemed manufacturers, we oversee the design and production stages to ensure our exacting standards are met.

## QUALITY ASSURANCE & TESTING

Quality assurance is paramount at Welcome to Universal Merchandising Hub, and it is ingrained in every aspect of our operations. Our dedicated quality control team employs stringent measures to uphold the highest standards of quality and reliability in our products. Before any product is approved for distribution, it undergoes a rigorous testing and inspection process. Our quality control specialists meticulously evaluate each product for durability, functionality, and aesthetic appeal, ensuring that it meets our stringent quality criteria. In addition to pre-production testing, we conduct ongoing quality assessments to monitor product performance and identify areas for improvement. By continually refining our quality assurance processes, we strive to deliver products that exceed our customers' expectations and withstand the test of time.

### **UMH Hardwares are tested in accordance to these Standards**

**BS - EN 1191** (Windows & Doors Resistance to repeated opening and closing) for life cycle.

**BS - EN ISO 9227** (Corrosion test in artificial atmosphere - Salt spray tests)

**BS - EN 1670** (Build ware hardware - corrosion resistance for - requirement and test methods) minimum grade 4 (240 hours) and for coastal locations Grade 5 (480 hours) without red rust.

# CASEMENT HANDLES



## PURANI DILLI CASEMENT WINDOW HANDLE

PRODUCT CODE: CWH-001PD

COLOUR : WHITE RAL-9016

BLACK MATT RAL-9005

POWDER COATING THICKNESS 60-80 MICRONS



## ECO CASEMENT WINDOW HANDLE

PRODUCT CODE: CWH-001E

COLOUR : WHITE RAL-9016

BLACK MATT RAL-9005

POWDER COATING THICKNESS 60-80 MICRONS



## PURANI DILLI CASEMENT WINDOW HANDLE WITH KEY

PRODUCT CODE: CWHK-001PD

COLOUR : WHITE RAL-9016

BLACK MATT RAL-9005

POWDER COATING THICKNESS 60-80 MICRONS

## ALLEN KEY HANDLE

PRODUCT CODE: AKH-001

COLOUR : WHITE RAL-9016

BLACK MATT RAL-9005

POWDER COATING THICKNESS 60-80 MICRONS



# CASEMENT HANDLES



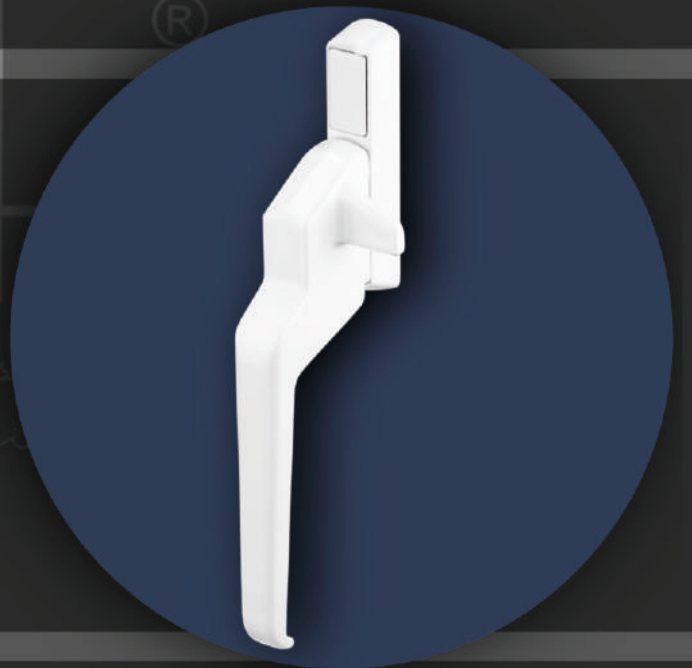
## ECO COCKSPUR HANDLE

PRODUCT CODE: CH-002E

COLOUR : WHITE RAL-9016

BLACK MATT RAL-9005

POWDER COATING THICKNESS 60-80 MICRONS



## NAYI DILLI COCKSPUR HANDLE

PRODUCT CODE: CH-002ND

COLOUR : WHITE RAL-9016

BLACK MATT RAL-9005

POWDER COATING THICKNESS 60-80 MICRONS

MENTION LHS FOR LEFT HAND SIDE AND RHS FOR  
RIGHT HAND SIDE



## PURANI DILLI COCKSPUR HANDLE

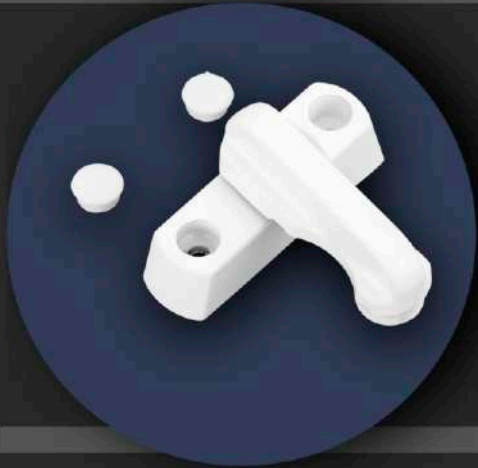
PRODUCT CODE: CH-002PD

COLOUR : WHITE RAL-9016

BLACK MATT RAL-9005

POWDER COATING THICKNESS 60-80 MICRONS

# CASEMENT HANDLE



## PURANI DILLI T LOCK SASH JAMMER

PRODUCT CODE: TH-005PD

COLOUR : WHITE RAL-9016

BLACK MATT RAL-9005

POWDER COATING THICKNESS 60-80 MICRONS

## PURANI DILLI CASEMENT WINDOW BOTH SIDE HANDLE PAIR WITH ONE SIDE KEY

PRODUCT CODE: CWHPK-006PD

COLOUR : WHITE RAL-9016

BLACK MATT RAL-9005

POWDER COATING THICKNESS 60-80 MICRONS



## PURANI DILLI CASEMENT WINDOW HANDLE PAIR WITH ONE SIDE KEY ONE SIDE KNOB

PRODUCT CODE: CWHPKK-006APD

COLOUR : WHITE RAL-9016

BLACK MATT RAL-9005

POWDER COATING THICKNESS 60-80 MICRONS

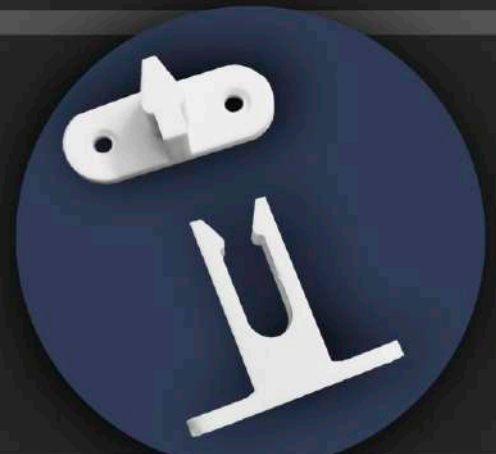
## MESH LOCK

PRODUCT CODE: ML-007

COLOUR : WHITE RAL-9016

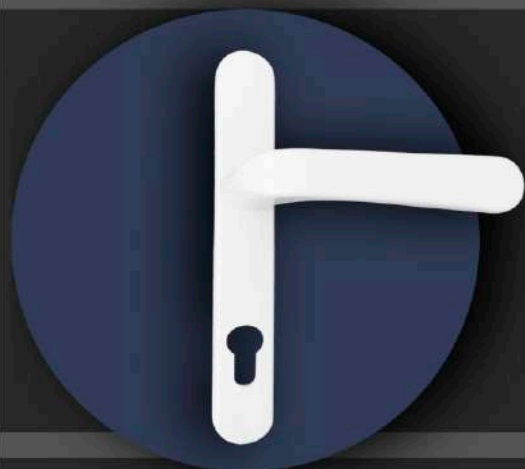
BLACK MATT RAL-9005

POWDER COATING THICKNESS 60-80 MICRONS





# CASEMENT HANDLE



## NAYI DILLI CASEMENT DOOR HANDLE LOCKABLE PAIR

PRODUCT CODE: CDHL-003ND

COLOUR : WHITE RAL-9016

BLACK MATT RAL-9005

POWDER COATING THICKNESS 60-80 MICRONS

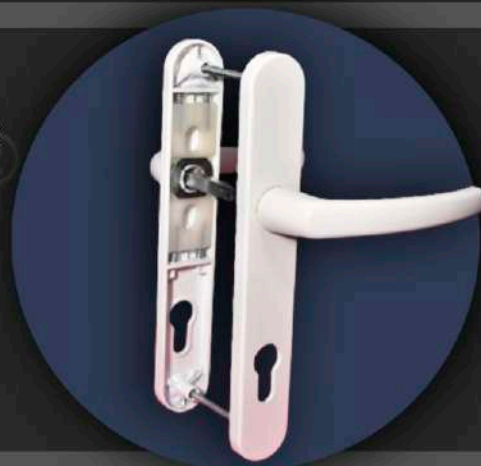
## PURANI DILLI CASEMENT DOOR HANDLE LOCKABLE PAIR

PRODUCT CODE: CDHL-003PD

COLOUR : WHITE RAL-9016

BLACK MATT RAL-9005

POWDER COATING THICKNESS 60-80 MICRONS



## CASEMENT DOOR HANDLE LOCKABLE PAIR

PRODUCT CODE: CDHL-003O

COLOUR : WHITE RAL-9016

BLACK MATT RAL-9005

POWDER COATING THICKNESS 60-80 MICRONS

## CASEMENT BOTH SIDE DOOR HANDLE WITH CYLINDER COVER

PRODUCT CODE: CBSDH-004

COLOUR : WHITE RAL-9016

BLACK MATT RAL-9005

POWDER COATING THICKNESS 60-80 MICRONS



# DOOR HANDLE SET

## NAYI DILLI ELEMENTO DOOR HANDLE SET PRODUCT CODE: CDHS-010NDE



- European Esapge 35/1800/85 Latch Type - 500-600 Hrs Salt Spray Test Passed, 15000 Cycles passed
- Complete 85mm Brass Body Lock Cylinder seven pins, with stylish Both Side heavy brass Ultra keys
- MS zinc Plated Heavy Central Striker with Zinc Central adjustable point
- MS Zinc Plated Square 8\*8mm with length 120 mm
- Colour coated screw heads

COLOUR: WHITE RAL-9016

BLACK MATT RAL-9005

POWDER COATING THICKNESS 60-80 MICRONS

## PURANI DILLI CASEMENT DOOR HANDLE

PRODUCT CODE: CDHS-010

- Esapge 35/1800/85 Latch Type - 250-350 Hrs Salt Spray Test Passed, 15000 Cycles passed
- 85mm Zinc Body Lock Cylinder Brass Five Pins, with brass Ultra keys, Duly lacquered
- MS zinc Plated Central Striker with Central adjustable point
- MS Zinc Plated Square 8\*8mm with length 120 mm
- 2 Nos. MS Zinc Plated Screws

COLOUR: WHITE RAL-9016

BLACK MATT RAL-9005

POWDER COATING THICKNESS 60-80 MICRONS



## CASEMENT DOOR HANDLE LOCKABLE SET

PRODUCT CODE: CDHS-010



- Esapge 35/1800/85 Latch Type - 250-350 Hrs Salt Spray Test Passed, 15000 Cycles passed
- 85mm Zinc Body Lock Cylinder Brass Five Pins, with brass Ultra keys, Duly lacquered
- MS zinc Plated Central Striker with Central adjustable point
- MS Zinc Plated Square 8\*8mm with length 120 mm
- 2 Nos. MS Zinc Plated Screws

COLOUR: WHITE RAL-9016

BLACK MATT RAL-9005

POWDER COATING THICKNESS 60-80 MICRONS

# DOOR HANDLE SET



## ELEMENTO MORTISE LOCK BODY SET FOR UPVC DOORS

PRODUCT CODE: MLBS-010EU\*, MLBS-010EAL\*\*

### \*U-STANDS FOR UPVC

### \*\*AL=Aluminium

- Complete Steel Lock Body (Sizes 20/85, 25/85, 30/85, 35/85)
- Complete 85mm Brass Body Lock Cylinder seven pins, with stylish One Side heavy brass Ultra keys and Other Side Brass Knob
- SS Heavy Central Striker Plate
- MS Zinc Plated Square 8\*8mm with length 120 mm

COLOUR: WHITE RAL-9016

BLACK MATT RAL-9005

POWDER COATING THICKNESS 60-80 MICRONS

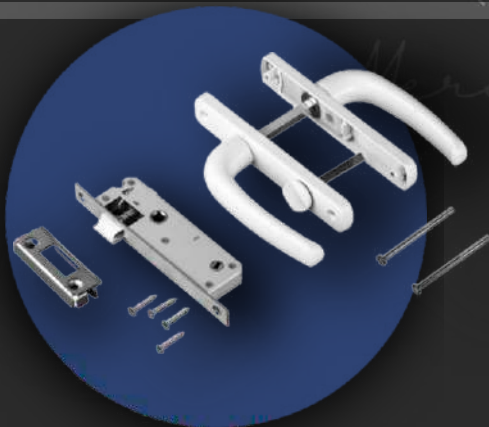
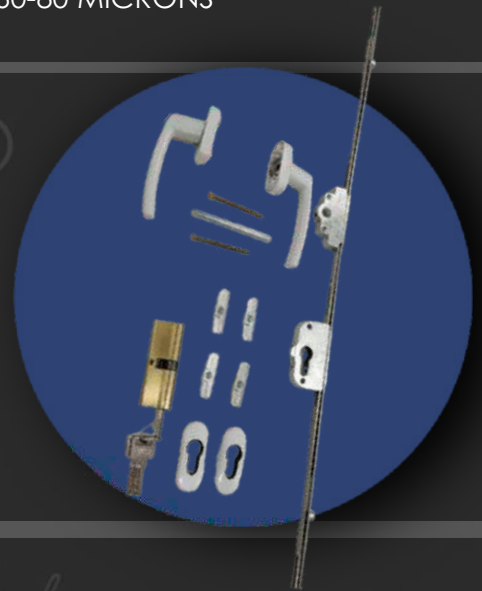
## CASEMENT DOOR HANDLE SET WITH CYLINDER COVER

PRODUCT CODE: CDHS-012CC

COLOUR: WHITE RAL-9016

BLACK MATT RAL-9005

POWDER COATING THICKNESS 60-80 MICRONS



## BATHROOM SET

PRODUCT CODE: BS-011

COLOUR: WHITE RAL-9016

BLACK MATT RAL-9005

POWDER COATING THICKNESS 60-80 MICRONS

## PURANI DILLI ALUMINIUM D HANDLE BOTH SIDE LOCKABLE

PRODUCT CODE: SDHLS-030SPD

- MS Zinc Plated Espage 15/1800/92mm, Zinc Casted Locking Poitns, Zinc Housing
- Zinc Body BSK Lock Cylinder 60 mm with Brass Ultra Keys and Brass Six pins
- Lock Striker 4 Nos. MS Zinc Coated, CSK m5x).8mm Screw 3 Nos.  
01 No. Square 7x7mm Spindle, 80 mm length

COLOUR: WHITE RAL-9016, BLACK MATT RAL-9005

POWDER COATING THICKNESS 60-80 MICRONS



# SLIDING HANDLE



**PURANI DILLI SHORT NECK HANDLE**  
**PRODUCT CODE: SNH-023PD**

COLOUR: WHITE RAL-9016  
BLACK MATT RAL-9005  
POWDER COATING THICKNESS 60-80 MICRONS

**NAYI DILLI ELEMENTO SLIDING HANDLE**  
**PRODUCT CODE: SH-020NDE**

COLOUR: WHITE RAL-9016  
BLACK MATT RAL-9005  
POWDER COATING THICKNESS 60-80 MICRONS



**NAYI DILLI LONG SHORT NECK HANDLE**  
**PRODUCT CODE: LSNH-023NDL**

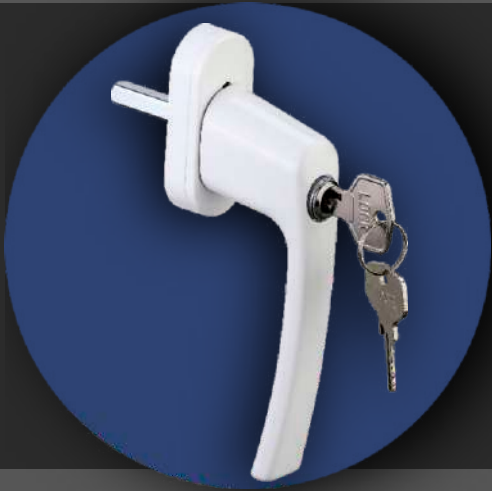
COLOUR: WHITE RAL-9016  
BLACK MATT RAL-9005  
POWDER COATING THICKNESS 60-80 MICRONS

**POPUH HANDLE**  
**PRODUCT CODE: PUH-024**

COLOUR: WHITE RAL-9016  
BLACK MATT RAL-9005  
POWDER COATING THICKNESS 60-80 MICRONS



# SLIDING HANDLE



## PURANI DILLI SLIDING HANDLE WITH KEY PRODUCT CODE: SHKK-022PD

COLOUR: WHITE RAL-9016  
BLACK MATT RAL-9005  
POWDER COATING THICKNESS 60-80 MICRONS

## MESH U HANDLE PRODUCT CODE: MUH-021

COLOUR: WHITE RAL-9016  
BLACK MATT RAL-9005  
POWDER COATING THICKNESS 60-80 MICRONS



## ONE POINT TOUCH LOCK PRODUCT CODE: OPTL-025

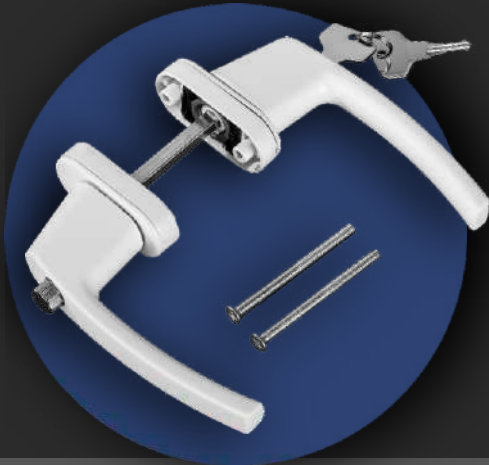
COLOUR: WHITE RAL-9016  
BLACK MATT RAL-9005  
POWDER COATING THICKNESS 60-80 MICRONS  
\*Available in both LHS and RHS

## ONE POINT LG TYPE TOUCH LOCK PRODUCT CODE: OPTL-025LG

COLOUR: WHITE RAL-9016  
BLACK MATT RAL-9005  
POWDER COATING THICKNESS 60-80 MICRONS  
\*Available in both LHS and RHS



# SLIDING HANDLE

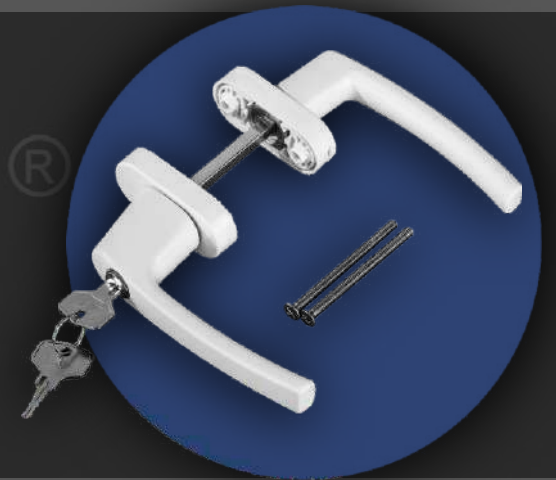


**PURANI DILLI SLIDING HANDLE PAIR WITH KEY & KNOB**  
**PRODUCT CODE: SHKK-022PD**

COLOUR: WHITE RAL-9016  
 BLACK MATT RAL-9005  
 POWDER COATING THICKNESS 60-80 MICRONS

**PURANI DILLI SLIDING HANDLE PAIR WITH KEY**  
**PRODUCT CODE: SHK-022PD**

COLOUR: WHITE RAL-9016  
 BLACK MATT RAL-9005  
 POWDER COATING THICKNESS 60-80 MICRONS



**NAYI DILLI SHORT NECK HANDLE**  
**PRODUCT CODE: SNH-023ND**

COLOUR: WHITE RAL-9016  
 BLACK MATT RAL-9005  
 POWDER COATING THICKNESS 60-80 MICRONS

**PURANI DILLI SLIDING HANDLE**  
**PRODUCT CODE: SH-020PD**

COLOUR: WHITE RAL-9016  
 BLACK MATT RAL-9005  
 POWDER COATING THICKNESS 60-80 MICRONS



# SLIDING D HANDLES



## D HANDLE BOTH SIDE LOCKABLE PRODUCT CODE: SDHL-030L

COLOUR: WHITE RAL-9016  
BLACK MATT RAL-9005  
POWDER COATING THICKNESS 60-80 MICRONS  
MATERIAL - ALUMINIUM  
SPINDLE 7\*7 - 80 MM LENGTH , 3 NOS. M5\*0.8 \*60MM SCREWS

## D HANDLE ONE SIDE LOCKABLE + OTHERSIDE NON LOCK PRODUCT CODE: SDHLNL-030NL

COLOUR: WHITE RAL-9016  
BLACK MATT RAL-9005  
POWDER COATING THICKNESS 60-80 MICRONS  
MATERIAL - ALUMINIUM  
SPINDLE 7\*7 - 80 MM LENGTH , 3 NOS. M5\*0.8 \*60 MM SCREWS



## D HANDLE NON LOCKABLE + OTHERSIDE DUMMY PRODUCT CODE: SDHNLD-030NLD

COLOUR: WHITE RAL-9016  
BLACK MATT RAL-9005  
POWDER COATING THICKNESS 60-80 MICRONS  
MATERIAL - ALUMINIUM  
SPINDLE 7\*7 - 80 MM LENGTH , 3 NOS. M5\*0.8 \*60 MM SCREWS

## D HANDLE BOTH SIDE DUMMY PRODUCT CODE: SDHD-030D

COLOUR: WHITE RAL-9016  
BLACK MATT RAL-9005  
POWDER COATING THICKNESS 60-80 MICRONS  
MATERIAL - ALUMINIUM  
SPINDLE 7\*7 - 80 MM LENGTH , 3 NOS. M5\*0.8 \*60 MM SCREWS



# SLIDING D HANDLE SERIES



## **D HANDLE LOCKABLE WITH DUMMY PLATE PRODUCT CODE: SDHLDP-030DP**

COLOUR: WHITE RAL-9016  
BLACK MATT RAL-9005  
POWDER COATING THICKNESS 60-80 MICRONS

## **D HANDLE NON LOCK WITH DUMMY PLATE PRODUCT CODE: SDHNLDP-030NLDP**

COLOUR: WHITE RAL-9016  
BLACK MATT RAL-9005  
POWDER COATING THICKNESS 60-80 MICRONS



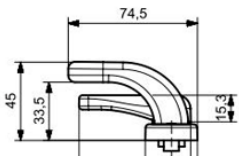
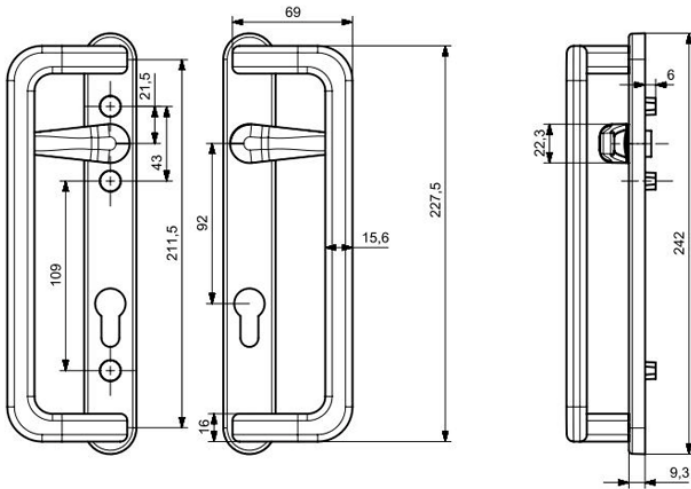
## **SHORT D HANDLE NON LOCK WITH DUMMY D HANDLE PRODUCT CODE: SDHSNLD-031**

COLOUR: WHITE RAL-9016  
BLACK MATT RAL-9005  
POWDER COATING THICKNESS 60-80 MICRONS





# PRIDE D HANDLE BOTH SIDE LOCKABLE



**PRODUCT CODE: SDHPL-040**

**Patented Design No. : 403196-001**

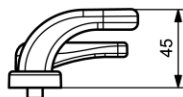
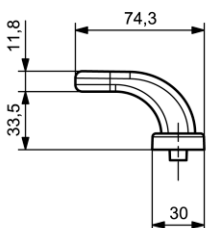
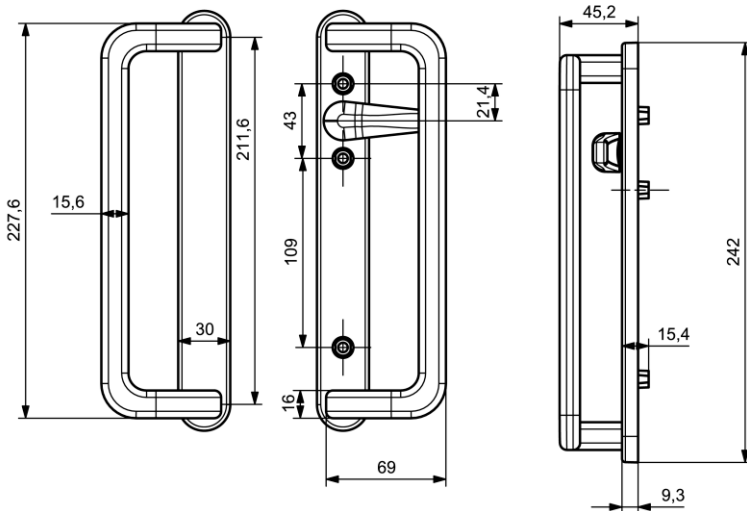
COLOUR: WHITE RAL-9016

BLACK MATT RAL-9005

POWDER COATING THICKNESS 60-80 MICRONS

Copyright © with Universal Merchandising Hub (UMH), All rights reserved

# NON LOCK + DUMMY D HANDLE



**Patented Design No. : 403196-001**

Copyright © with Universal Merchandising Hub (UMH), All rights reserved

# SLIDING D HANDLE SERIES

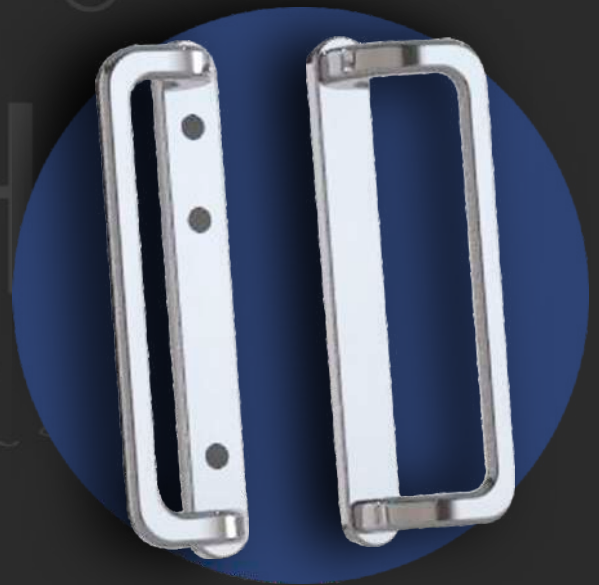


**PRIDE D HANDLE NON LOCK PAIR**  
**PRODUCT CODE: SDHPNL-040NL**

COLOUR: WHITE RAL-9016  
 BLACK MATT RAL-9005  
 POWDER COATING THICKNESS 60-80 MICRONS

**PRIDE D HANDLE NON LOCK WITH DUMMY PLATE**  
**PRODUCT CODE: SDHNLDP-030NLDP**

COLOUR: WHITE RAL-9016  
 BLACK MATT RAL-9005  
 POWDER COATING THICKNESS 60-80 MICRONS

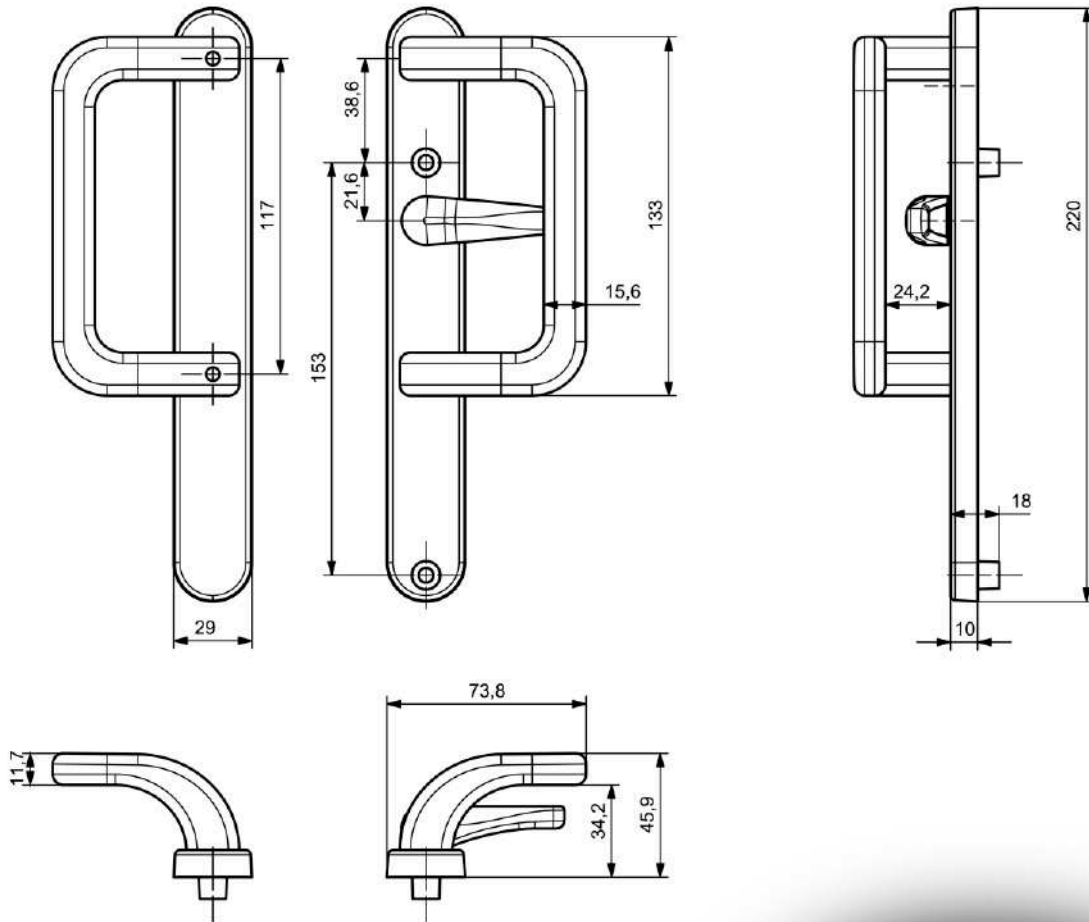


**PRIDE D HANDLE NON LOCK WITH DUMMY D HANDLE**  
**PRODUCT CODE: SDHSNLD-031**

COLOUR: WHITE RAL-9016  
 BLACK MATT RAL-9005  
 POWDER COATING THICKNESS 60-80 MICRONS



# PRIDE 2.0 D HANDLE NON LOCK + DUMMY



**Product code SDHP2.ONLD-050NLD**

COLOUR: WHITE RAL-9016

BLACK MATT RAL-9005

POWDER COATING THICKNESS 60-80 MICRONS



# SLIDING D HANDLES



## PRIDE 2.0 D HANDLE LOCKABLE WITH DUMMY

**PRODUCT CODE: SDHP2.O-050LD**

**Patented Design No. : 414175-001**

COLOUR: WHITE RAL-9016

BLACK MATT RAL-9005

POWDER COATING THICKNESS 60-80 MICRONS

Copyright © with Universal Merchandising Hub (UMH),  
 All rights reserved

## PRIDE 2.0 D HANDLE BOTH SIDE LOCKABLE

**PRODUCT CODE: SDHP2.O-050NLD**

**Patented Design No. : 414175-001**

COLOUR: WHITE RAL-9016

BLACK MATT RAL-9005

POWDER COATING THICKNESS 60-80 MICRONS

Copyright © with Universal Merchandising Hub (UMH),  
 All rights reserved



## PRIDE 2.0 D HANDLE NON LOCK PAIR

**PRODUCT CODE: SDHP2.O-050NL**

**Patented Design No. : 414175-001**

COLOUR: WHITE RAL-9016

BLACK MATT RAL-9005

POWDER COATING THICKNESS 60-80 MICRONS

Copyright © with Universal Merchandising Hub (UMH),  
 All rights reserved

# ROLLERS

**SINGLE ROLLER  
NYLON GROOVE**



**SINGLE ROLLER-  
NYLON FLAT**



**DOUBLE ROLLER  
NYLON GROOVE**



**DOUBLE ADJUSTABLE  
ROLLER WHITE PVC**



**ADJUSTABLE ROLLER  
DOUBLE WHEELER**



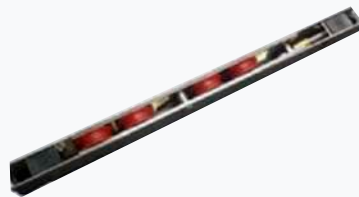
**DOUBLE ROLLER  
BRASS**



**MESH ROLLER**



**4 WHEEL ROLLER**



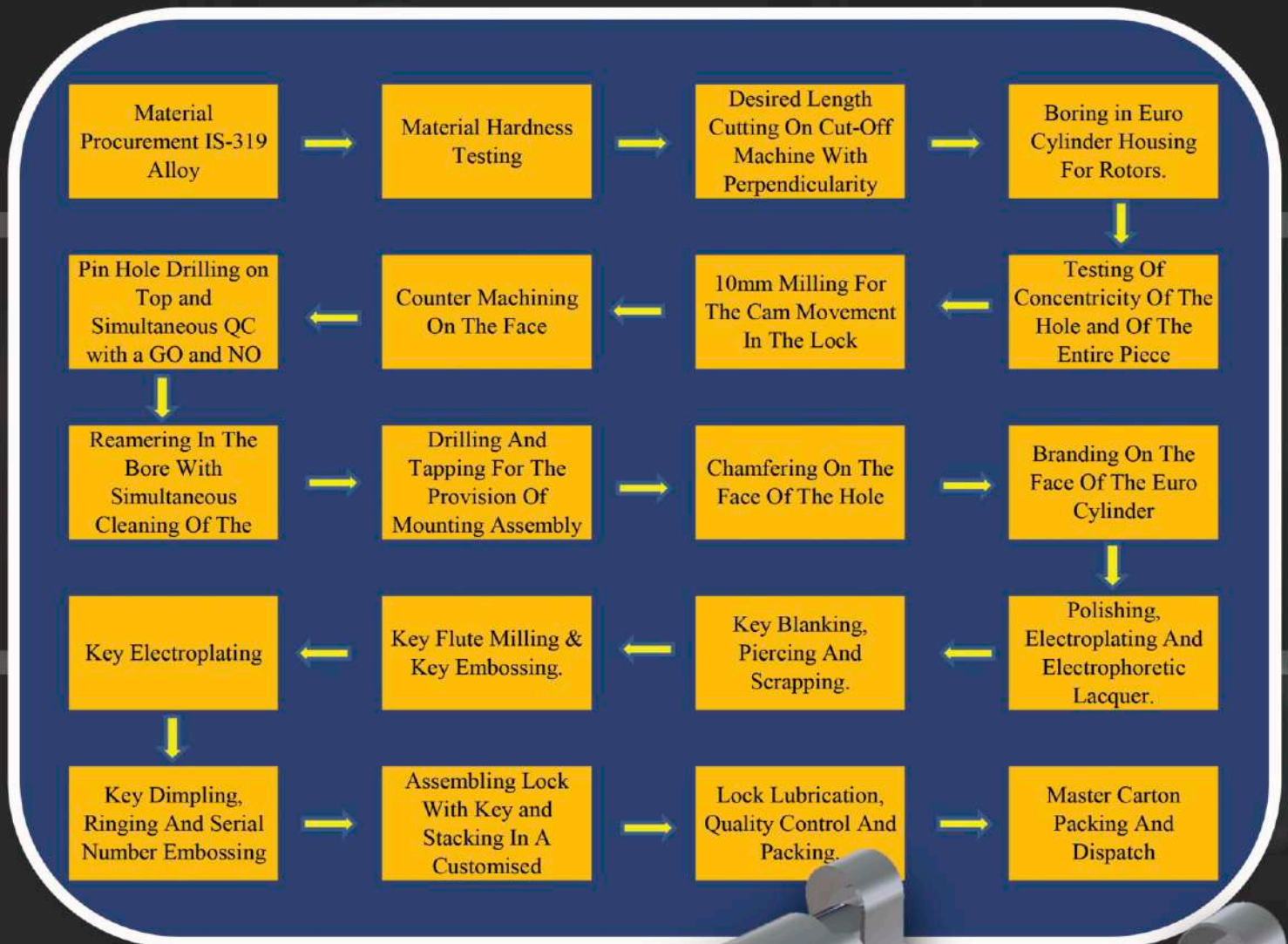
**8 WHEEL ROLLER**



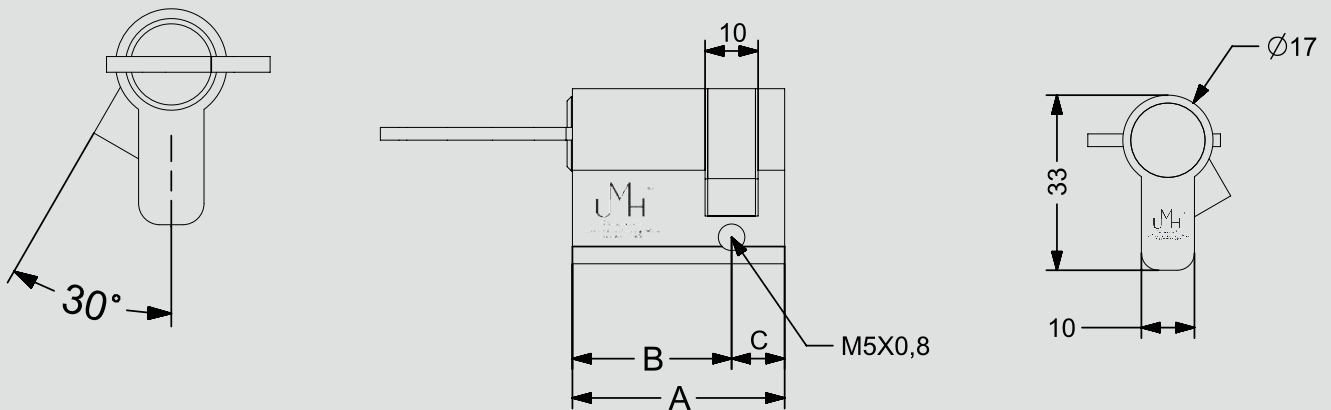
**SINGLE GROOVE ROLLER**



# PROCESS FLOW CHART FOR EURO PROFILE & OVAL PROFILE CYLINDER LOCKS



# LOCK CYLINDER



## BRASS HALF CYLINDER WITH ONE SIDE KEY

\* All Sizes in MM

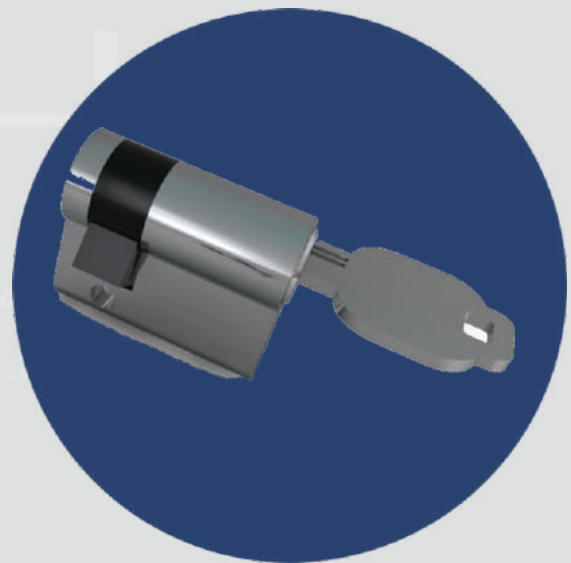
\*More Knob designs Available

Finish - Brushed Satin Nickel-SN

( Also Av.Gold(G)/Black(BL)/

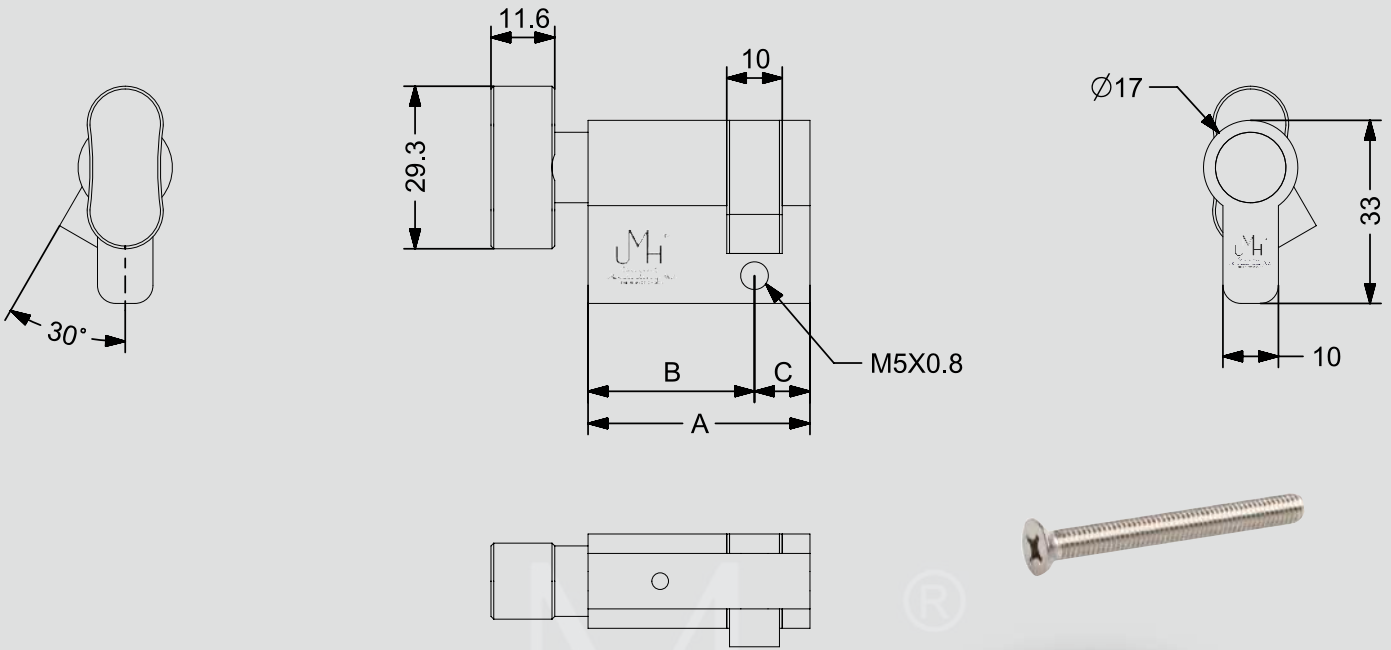
Nickel Chrome(NiCr) One CSK Philip

Head Screw M5\*0.8



ITEM CODE	DESCRIPTION	A	B	C
UM40HLFKU-SN	40 MM HLF - KEY	40	30	10
UM45HLFKU-SN	45 MM HLF - KEY	45	35	10
UM50HLFKU-SN	50 MM HLF - KEY	50	40	10
UM55HLFKU - SN	55 MM HLF - KEY	55	45	10
UM60HLFKU - SN	60 MM HLF - KEY	60	50	10
UM65HLFKU - SN	65 MM HLF - KEY	65	55	15

# LOCK CYLINDER



## BRASS HALF CYLINDER KNOB

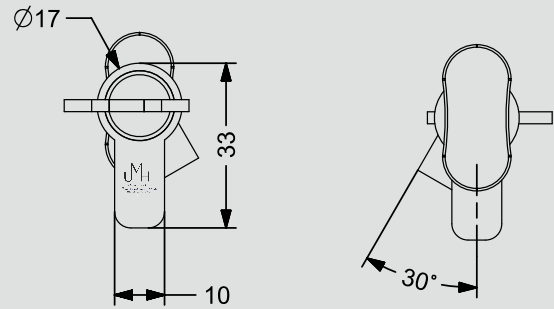
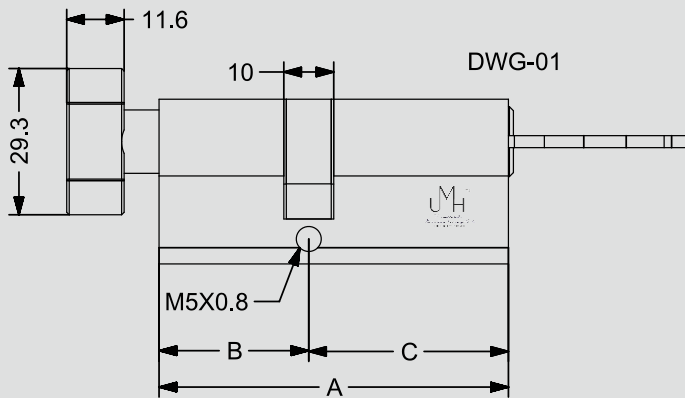
- \* All Sizes in MM
  - \* Brass Euro Cylinder Half Thumb Turn (TT) - Knob
  - \* Half Cylinder Lock Thumb Turn (TT)
  - \* More Knob designs Available
- Finish - Brushed Satin Nickel-SN  
 ( Also Av. Gold(G)/Black(BL)/  
 Nickel Chrome(NiCr) One CSK Philip  
 Head Screw M5\*0.8



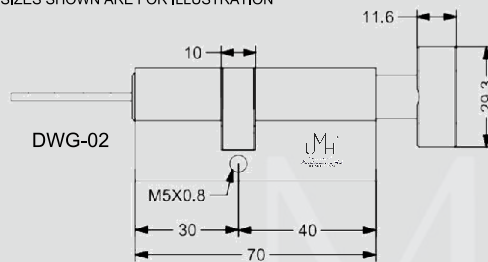
ITEM CODE	DESCRIPTION	A	B	C
UM40HLFTT-SN	40 MM HLF- KNOB	40	30	10
UM45HLFTT-SN	45 MM HLF - KNOB	45	35	10
UM50HLFTT-SN	50 MM HLF - KNOB	50	40	10
UM55HLFTT - SN	55 MM HLF - KNOB	55	45	10
UM60HLFTT - SN	60 MM HLF - KNOB	60	50	10
UM65HLFTT - SN	65 MM HLF - KNOB	65	55	15



# LOCK CYLINDER

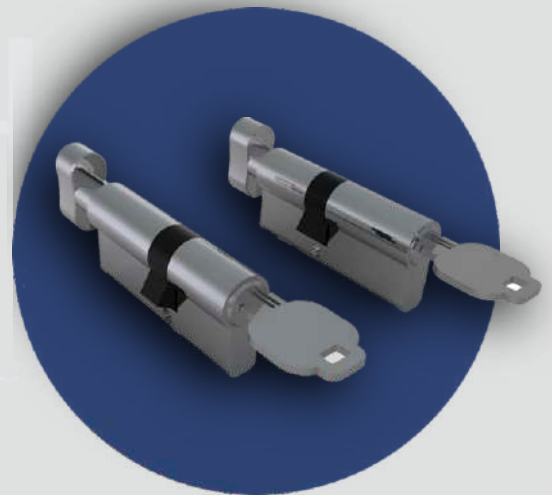


SIZES SHOWN ARE FOR ILLUSTRATION



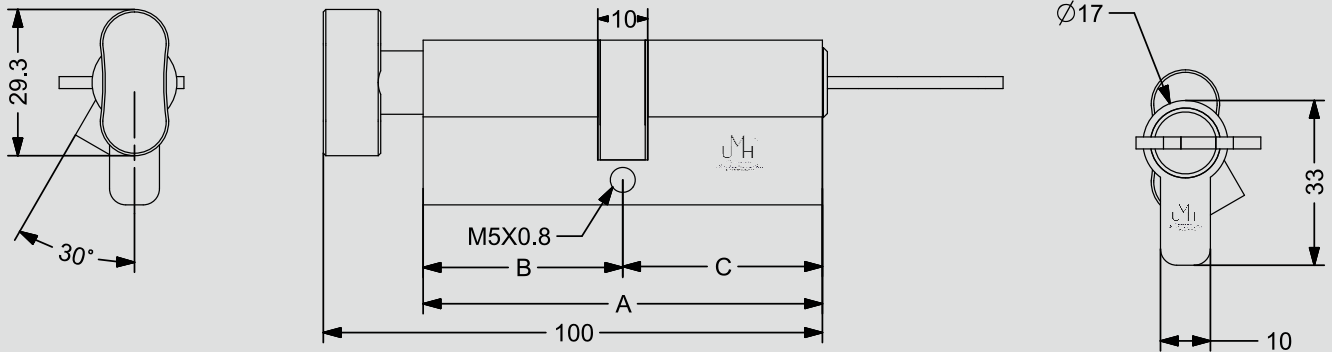
## EURO PROFILE OFFSET LOCK CYLINDER ONE SIDE KEY ONE SIDE THUMB TURN

- \* All Sizes in MM
- \* Brass Euro Cylinder with Brass Knob & Brass Keys
- \* One Side Key One Side Thumb Turn ( Knob)-OSK
- \* Other Knob & Key designs Available
- \* Heavy Ultra Computerized Keys - 3 Nos. OAT
- \* Six / Seven Pins
- \* Finish - Brushed Satin Nickel (Also Av.Gold/Black/Nickel Chrome) Kio Ve
- \* One Screw CSK Philip Head M5\*0,8
- \* Customization in Size & Combination Possible
- \* Master Key Cylinders Manufactured



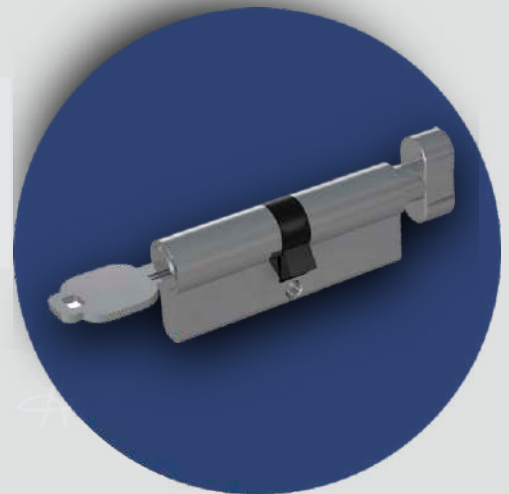
ITEM CODE	DESCRIPTION	A	B	C	REF.
UMOF70OSKU-30K40-SN	70 MM OSK	70	30	40	DWG-01
UMOF70OSKU-3040K-SN	70 MM OSK	70	40	30	DWG-02
UMOF75OSKU-30K45-SN	75 MM OSK	75	30	45	DWG-01
UMOF75OSKU-3045K-SN	75 MM OSK	75	45	30	DWG-02
UMOF80OSKU-35K45-SN	80 MM OSK	80	35	45	DWG-01
UMOF80OSKU-3545K-SN	80 MM OSK	80	45	35	DWG-02
UMOF80OSKU-30K50-SN	80 MM OSK	80	30	50	DWG-01
UMOF80OSKU-3050K-SN	80 MM OSK	80	50	30	DWG-02
UMOF85OSKU-35K50-SN	85 MM OSK	85	35	50	DWG-01
UMOF80OSKU-3550K-SN	85 MM OSK	85	50	35	DWG-02
UMOF90OSKU-42K48-SN	90 MM OSK	90	42	48	DWG-01
UMOF90OSKU-4248K-SN	90 MM OSK	90	48	42	DWG-02
UMOF90OSKU-40K50-SN	90 MM OSK	90	40	50	DWG-01
UMOF90OSKU-4050K-SN	90 MM OSK	90	50	40	DWG-02
UMOF90OSKU-30K60-SN	90 MM OSK	90	30	60	DWG-01
UMOF90OSKU-3060K-SN	90 MM OSK	90	60	30	DWG-02

# LOCK CYLINDER



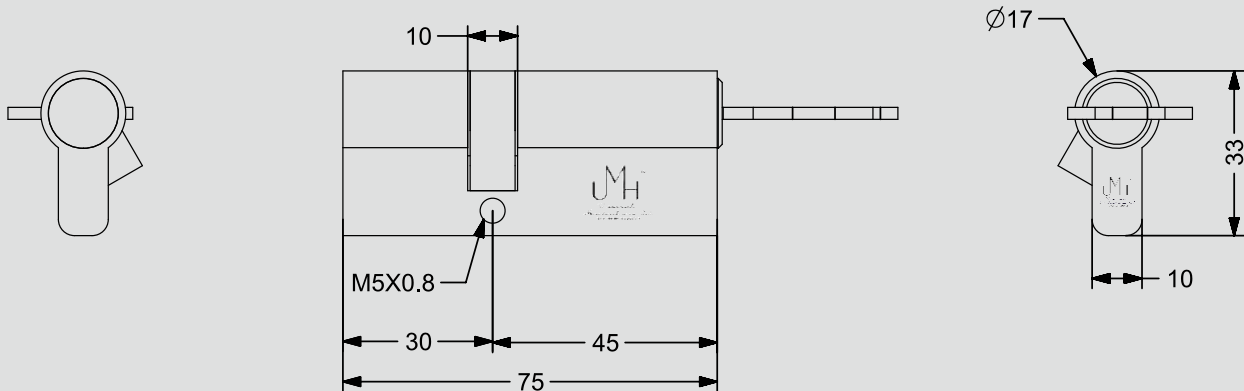
## BRASS EURO PROFILE OFFSET LOCK CYLINDER BOTH SIDE -BSK

- \* All Sizes in MM
- \* Brass Euro Cylinder with Brass Knob & Brass Keys
- \* One Side Key One Side Thumb Turn ( Knob)-OSK
- \* Other Knob & Key designs Available
- \* Heavy Ultra Computerized Keys - 3 Nos. OAT
- \* Six / Seven Pins
- \* Finish - Brushed Satin Nickel (Also Av.Gold/Black/Nickel Chrome) Kio Ve
- \* One Screw CSK Philip Head M5\*0,8
- \* Customization in Size & Combination Possible
- \* Master Key Cylinders Manufactured



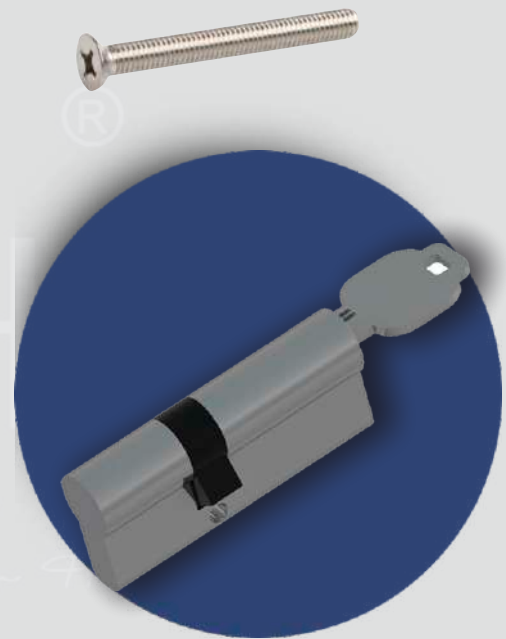
ITEM CODE	DESCRIPTION	A	B	C
UM60OSKU-SN	60 MM OSK	60	30	30
UM62OSKU-SN	62 MM OSK	62	31	31
UM65OSKU-SN	65 MM OSK	65	32.5	32.5
UM70OSKU-SN	70 MM OSK	70	35	35
UM75OSKU-SN	75 MM OSK	75	37.5	37.5
UM80OSKU-SN	80 MM OSK	80	40	40
UM85OSKU-SN	85 MM OSK	85	43.5	43.5
UM90OSKU-SN	90 MM OSK	90	45	45
UM100OSKU-SN	100 MM OSK	100	50	50

# LOCK CYLINDER



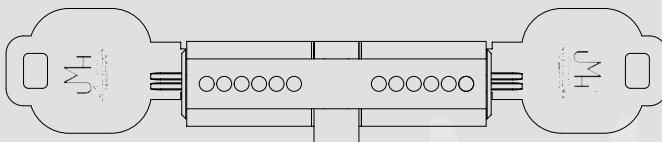
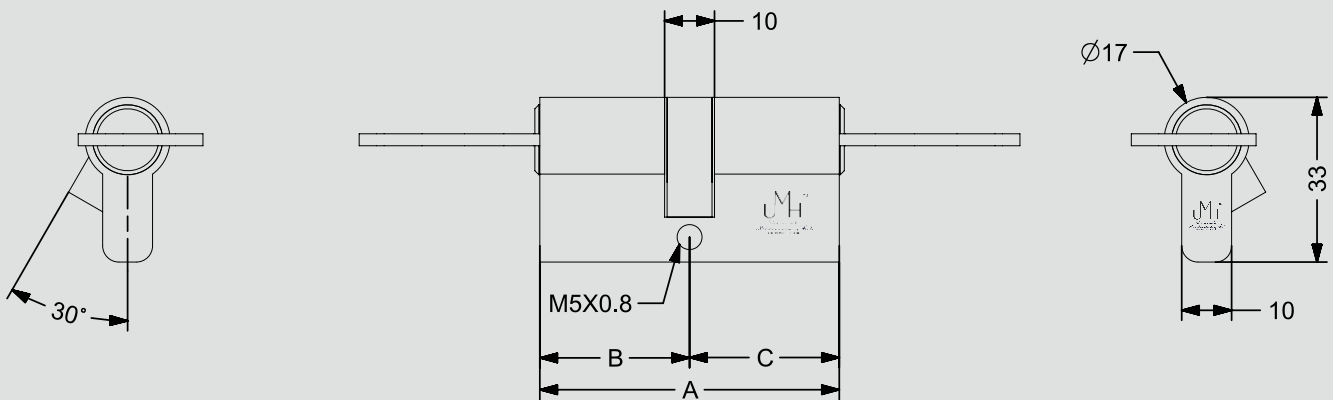
## EURO PROFILE KEY+BLANK LOCK CYLINDER

- \* All Sizes in MM
- \* Brass Euro Profile KEY+BLANK (KB)
- \* Heavy Brass Computerized Ultra key 3 Nos.
- \* Six/Seven Pin
- \* More Key designs Available
- \* Finish - Brushed Satin Nickel-SN (Also Av.Gold(G)/Black(BL)/Nickel Chrome(NiCr) ) One CSK Philip Head Screw M5\*0.8



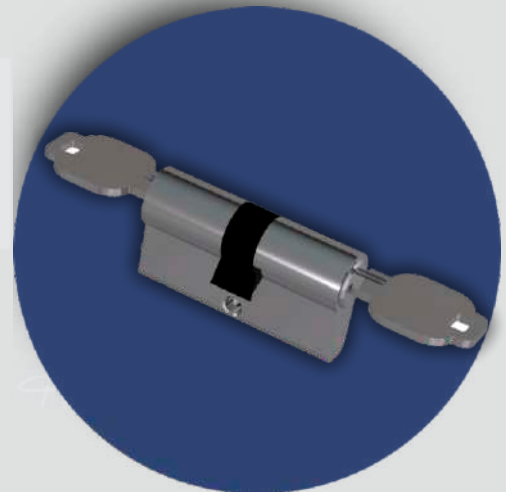
ITEM CODE	DESCRIPTION	A	B	C
UM75OFKB30B45-SN	75 MM Key+Blank	75	30	45
UM75OFKB3045B-SN	75 MM Key +Blank	75	30	45
UM80OFKB35B45-SN	80 MM Key+Blank	80	35	45
UM80OFKB30B50-SN	80 MM Key+Blank	80	30	50
UM80OFKB4040-SN	80 MM Key+Blank	80	40	40
UM85OFKB425425-SN	85 MM Key+Blank	85	42.5	42.5
UM90OFKB4545-SN	90 MM Key+Blank	90	45	45
UM75OFKB5050-SN	100 MM Key+Blank	100	50	50

# LOCK CYLINDER



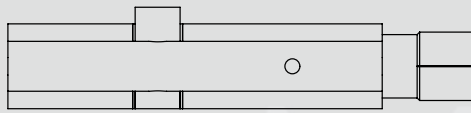
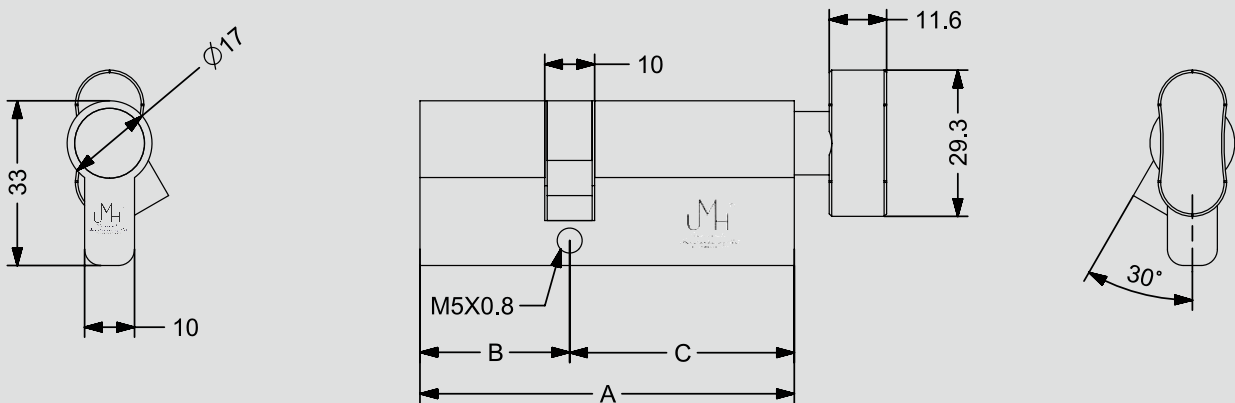
## EURO BRASS CYLINDER - BOTH SIDE ULTRA KEYS

- \* All Sizes in MM
- \* Brass Euro Cylinder with Brass Keys
- \* Both Side Keys - BSK
- \* More Key designs Available
- \* Heavy Ultra Computerized Keys - 3 Nos.
- \* Six / Seven Pins
- \* Finish - Brushed Satin Nickel (Also Av. Gold/Black/Nickel Chrome)
- \* One Screw CSK Philip Head M5\*0,8



ITEM CODE	DESCRIPTION	A	B	C
UM60BSKU-SN	60 MM BSK	60	30	30
UM62BSKU-SN	62 MM BSK	62	31	31
UM65BSKU-SN	65 MM BSK	65	32.5	32.5
UM70BSKU-SN	70 MM BSK	70	35	35
UM75BSKU-SN	75 MM BSK	75	37.5	37.5
UM80BSKU-SN	80 MM BSK	80	40	40
UM85BSKU-SN	85 MM BSK	85	42.5	42.5
UM90BSKU-SN	90 MM BSK	90	45	45
UM100BSKU-SN	100 MM BSK	100	50	50

# LOCK CYLINDER



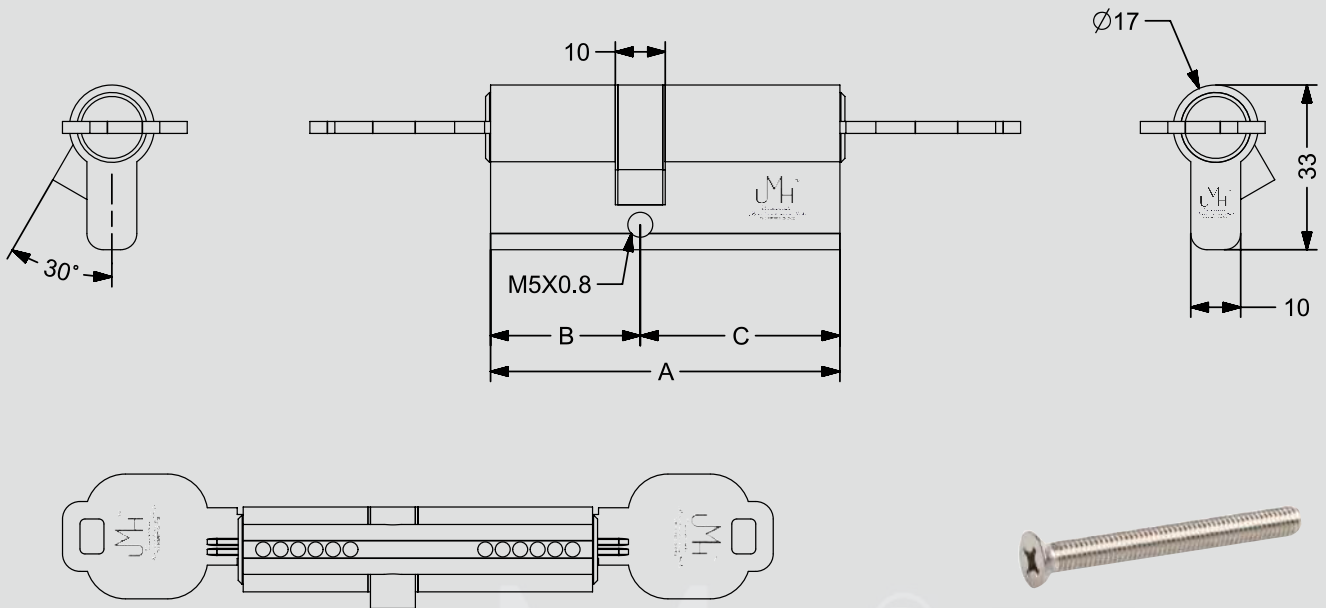
## BRASS EURO PROFILE BLANK KNOB LOCK CYLINDER

- \* All Sizes in MM
- \* Brass Euro Profile Offset Lock Cylinder
- \* One Side Knob + Other Side Blank(B)
- \* More Knob designs Available
- \* Finish - Brushed Satin Nickel-SN ( Also Av.Gold(G)/ Black(BL)/Nickel Chrome(NiCr) )
- \* One CSK Philip Head Screw M5\*0.8
- \* Customization is possible in Size & Combination on order



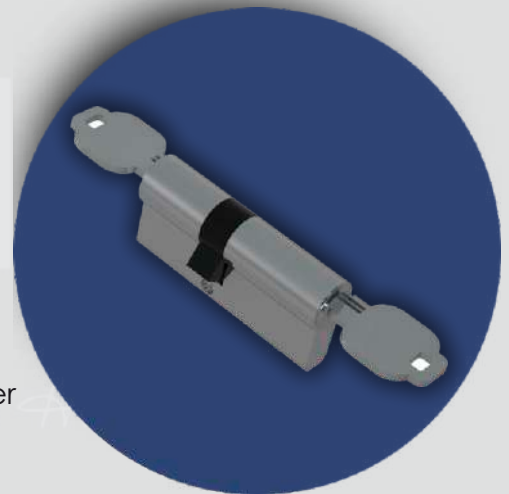
ITEM CODE	DESCRIPTION	A	B	C
UM75OFTTB30B45-SN	75 MM Knob+Blank	75	30	45
UM75OFTTB3045B-SN	75 MM Knob +Blank	75	30	45
UM80OFTTB35B45-SN	80 MM Knob+Blank	80	35	45
UM80OFTTB30B50-SN	80 MM Knob+Blank	80	30	30
UM80OFTTB4040-SN	80 MM Knob+Blank	80	40	40
UM85OFTTB425425-SN	85 MM Knob+Blank	85	42.5	42.5
UM90OFTTB4545-SN	90 MM Knob+Blank	90	45	45
UM75OFTTB5050-SN	100 MM Knob+Blank	100	50	50

# LOCK CYLINDER



## Brass Euro Profile Offset Lock Cylinder Both Side - BSK

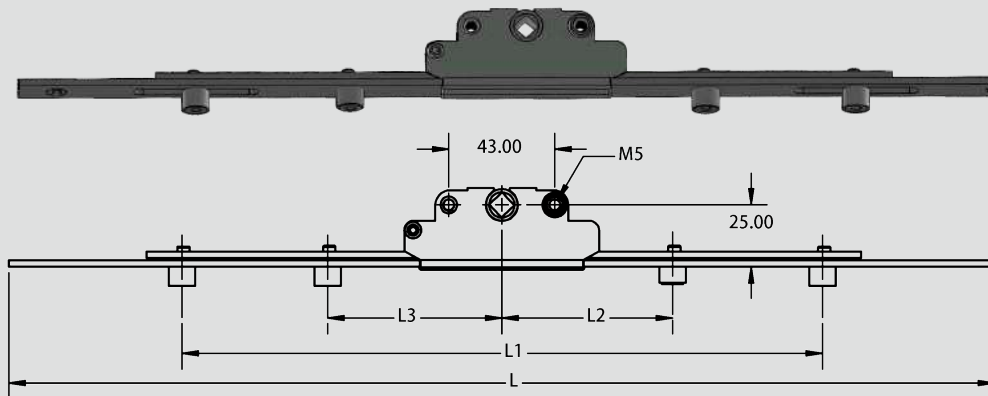
- \* All Sizes in MM
- \* Six/Seven Pin
- \* One CSK Philip Head Screw M5\*0.8
- \* Brass Euro Profile Offset Lock Cylinder  
Both Side Keys - BSK
- \* Heavy Brass Computerized Ultra key 3 Nos.
- \* Customization is possible in Size & Combination on order
- \* Finish - Brushed Satin Nickel-SN (Also Av.Gold(G)  
/Black(BL)/Nickel Chrome(NiCr))



ITEM CODE	DESCRIPTION	A	B	C
UMOF65BSKU3530	65 MM BSK	65	30	35
UMOF70BSKU3040	70 MM BSK	70	30	40
UMOF75BSKU3045	75 MM BSK	75	30	45
UMOF80BSKU3545	80 MM BSK	80	35	45
UMOF80BSKU3050	80 MM BSK	80	30	50
UMOF85BSKU3550	85 MM BSK	85	35	50
UMOF90BSKU4248	90 MM BSK	90	42	48
UMOF90BSKU4050	90 MM BSK	90	40	50
UMOF90BSKU3060	90 MM BSK	90	30	60

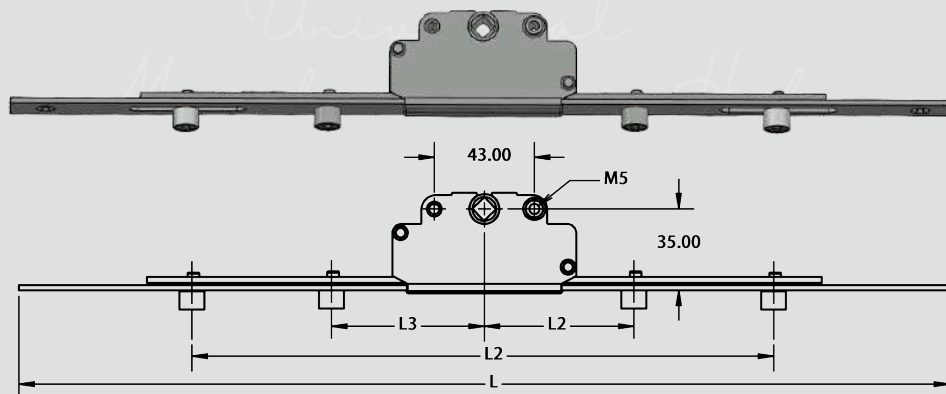
# CASEMENT TRANSMISSION GEAR ROD SERIES

## Casment Transmission Gear Rod backset 25 mm



CASEMENT ESPAG 25mm BACKSET	PRODUCT CODE		L	L1	L2	L3
	UMTGR-25-0400	UMTGR-SS25-0400	400	260	—	—
	UMTGR-25-0600	UMTGR-SS25-0600	600	460	—	—
	UMTGR-25-0800	UMTGR-SS25-0800	800	660	—	—
	UMTGR-25-1000	UMTGR-SS25-1000	1000	860	—	—
	UMTGR-25-1200	UMTGR-SS25-1200	1200	1060	170	—
	UMTGR-25-1400	UMTGR-SS25-1400	1400	1260	170	—
	UMTGR-25-1600	UMTGR-SS25-1600	1600	1460	170	170
	UMTGR-25-1800	UMTGR-SS25-1800	1800	1660	170	170
MATERIAL	CARBON STEEL & ZINC	SS 304 & ZINC				
FOR	uPVC CASEMENT SYSTEM					
FINISH	ELECTROPLATED - CORROSION RESISTANCE AS PER BS-EN 1670					

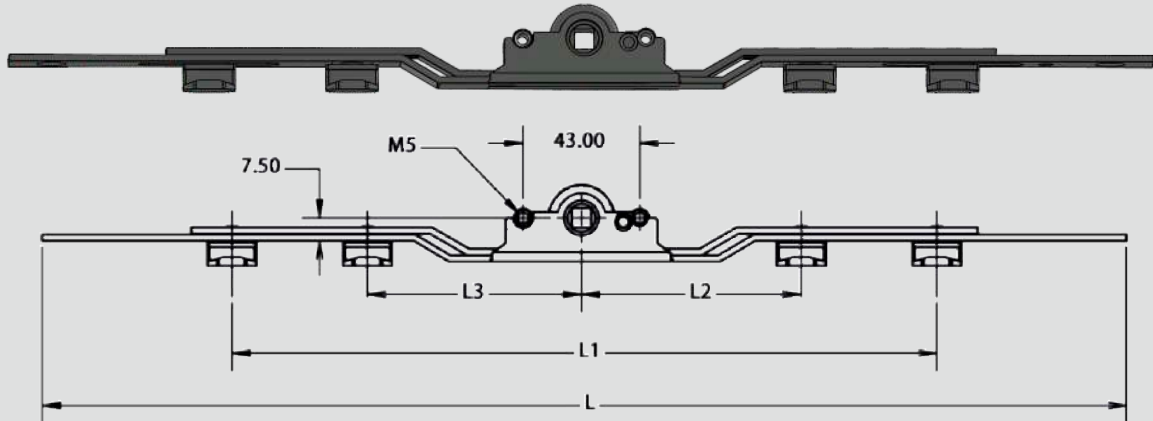
## Casment Transmission Gear Rod backset 35 mm



CASEMENT ESPAG 35mm	PRODUCT CODE		L	L1	L2	L3
	UMTGR-35-1200	UMTGR-SS35-1200	1200	1060	170	—
	UMTGR-35-1400	UMTGR-SS35-1400	1400	1260	170	—
	UMTGR-35-1600	UMTGR-SS35-1600	1600	1460	170	170
	UMTGR-35-1800	UMTGR-SS35-1800	1800	1660	170	170
	UMTGR-35-2000	UMTGR-SS35-2000	2000	1860	170	170
MATERIAL	CARBON STEEL & ZINC	SS 304 & ZINC				
FOR	uPVC CASEMENT SYSTEM					
FINISH	ELECTROPLATED - CORROSION RESISTANCE AS PER BS-EN 1670					

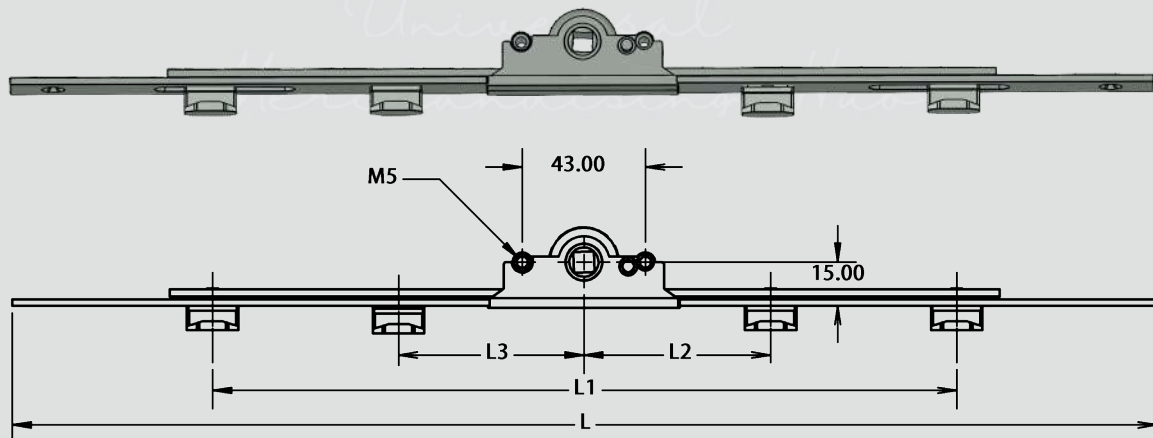
# SLIDING D HANDLE LOCKABLE TRANSMISSION GEAR ROD

## Sliding Transmission Gear Rod - Espage backset 7.5 mm



SLIDING ESPAG 7.5mm BACKSET	PRODUCT CODE		L	L1	L2	L3
	UM-7.5-0400	UM-SS7.5-0400	400	260	—	—
	UM-7.5-0600	UM-SS7.5-0600	600	460	—	—
	UM-7.5-0800	UM-SS7.5-0800	800	660	—	—
	UM-7.5-1000	UM-SS7.5-1000	1000	860	—	—
	UM-7.5-1200	UM-SS7.5-1200	1200	1060	170	—
	UM-7.5-1400	UM-SS7.5-1400	1400	1260	170	—
	UM-7.5-1600	UM-SS7.5-1600	1600	1460	170	170
	UM-7.5-1800	UM-SS7.5-1800	1800	1660	170	170
	UM-7.5-2000	UM-SS7.5-2000	2000	1860	170	170
	UM-7.5-2100	UM-SS7.5-2100	2100	1960	170	170
	UM-7.5-2400	UM-SS7.5-2400	2400	2260	170	170
MATERIAL	MILD CARBON STEEL & ZINC	SS 304 & ZINC				
FOR	uPVC SLIDING SYSTEM					
FINISH	ELECTROPLATED - CORROSION RESISTANCE AS PER BS-EN 1670					

## Sliding Transmission Gear Rod - Espage backset 15 mm

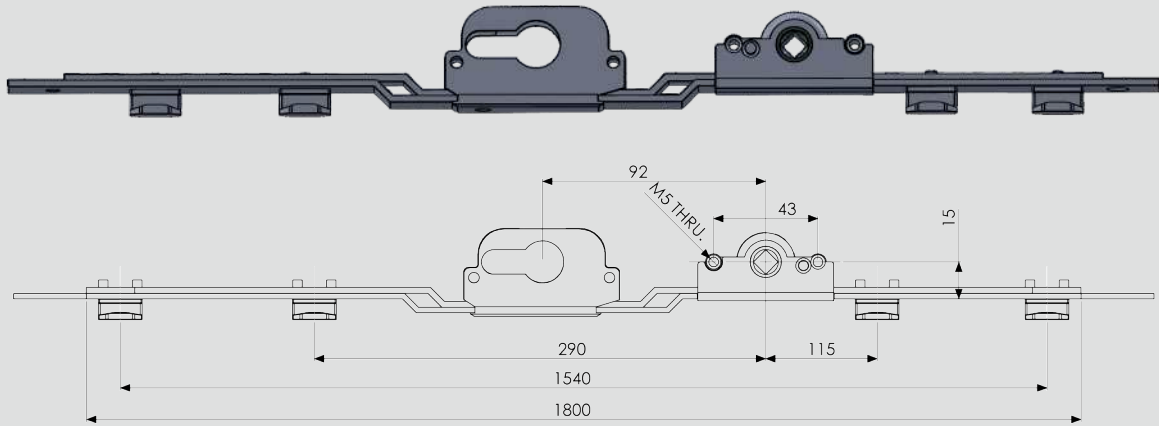


SLIDING ESPAG 15mm BACKSET	PRODUCT CODE		L	L1	L2	L3
	UMTGR-15-0400	UMTGR-SS15-0400	400	260	—	—
	UMTGR-15-0600	UMTGR-SS15-0600	600	460	---	---
	UMTGR-15-0800	UMTGR-SS15-0800	800	660	---	---
	UMTGR-15-1000	UMTGR-SS15-1000	1000	860	---	---
	UMTGR-15-1200	UMTGR-SS15-1200	1200	1060	170	---
	UMTGR-15-1400	UMTGR-SS15-1400	1400	1260	170	---
	UMTGR-15-1600	UMTGR-SS15-1600	1600	1460	170	170
	UMTGR-15-1800	UMTGR-SS15-1800	1800	1660	170	170
	UMTGR-15-2000	UMTGR-SS15-2000	2000	1860	170	170
	UMTGR-15-2100	UMTGR-SS15-2100	2100	1960	170	170
	UMTGR-15-2400	UMTGR-SS15-2400	2400	2260	170	170
MATERIAL	CARBON STEEL & ZINC	SS 304 & ZINC				
FOR	uPVC SLIDING SYSTEM					
FINISH	ELECTROPLATED - CORROSION RESISTANCE AS PER BS-EN 1670					



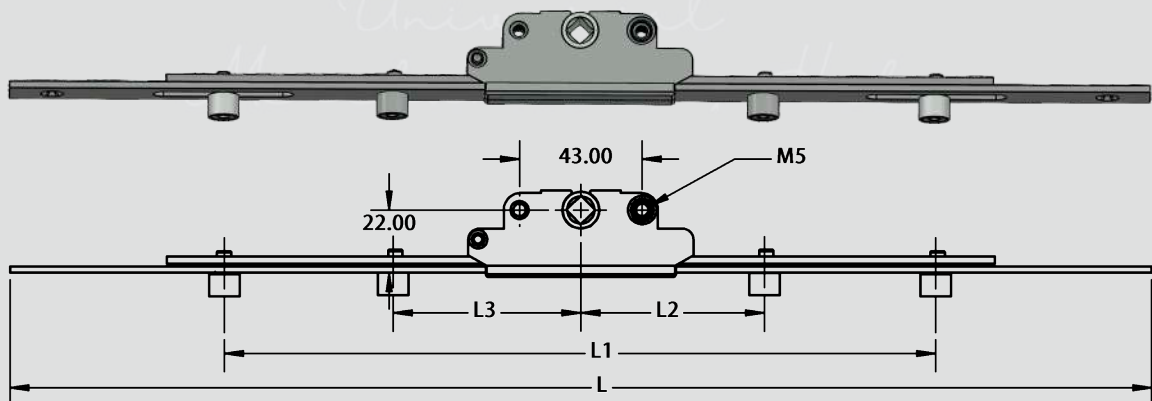
# SLIDING D HANDLE LOCKABLE TRANSMISSION GEAR ROD

## Sliding Transmission Gear Rod



UMTGRDSL- 609 - 1800  
SLIDING LOCKABLE ESPAG FOR D - HANDLE  
BACKSET - 15mm

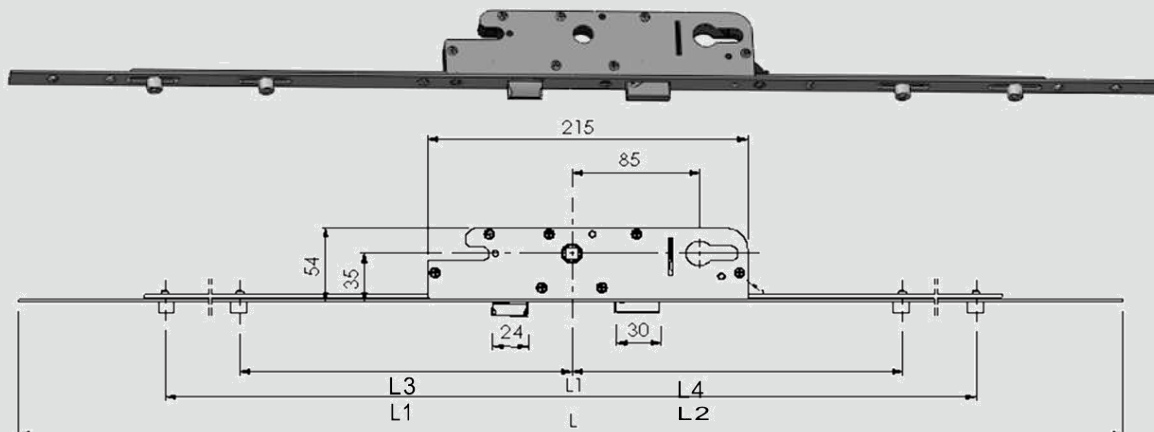
## Casment Transmission Gear Rod backset 22 mm



	PRODUCT CODE		L	L1	L2	L3
	CASEMENT ESPAG 22mm BACKSET	UMCTGR-22-0400	UMCTGR-SS22-0400	400	260	—
UMCTGR-22-0600		UMCTGR-SS22-0600	600	460	—	—
UMCTGR-22-0800		UMCTGR-SS22-0800	800	660	—	—
UMCTGR-22-1000		UMCTGR-SS22-1000	1000	860	—	—
UMCTGR-22-1200		UMCTGR-SS22-1200	1200	1060	170	—
UMCTGR-22-1400		UMCTGR-SS22-1400	1400	1260	170	—
UMCTGR-22-1600		UMCTGR-SS22-1600	1600	1460	170	170
UMCTGR-22-1800		UMCTGR-SS22-1800	1800	1660	170	170
UMCTGR-22-2000		UMCTGR-SS22-2000	2000	1860	170	170
UMCTGR-22-2100		UMCTGR-SS22-2100	2100	1960	170	170
UMCTGR-22-2400		UMCTGR-SS22-2400	2400	2260	170	170
MATERIAL		MILD CARBON STEEL & ZINC	SS 304 & ZINC			
FOR	uPVC CASEMENT SYSTEM					
FINISH	ELECTROPLATED - CORROSION RESISTANCE AS PER BS-EN 1670					

# CASEMENT TRANSMISSION GERA ROD SERIES

## Casement Transmission Gear Rod backset 35 mm



CASEMENT LOCKABLE	PRODUCT CODE		L	L1	L2	L3	L4
	UMTGRL-35-1600	UMTGRL-SS35-1600	1600	690	715	205	230
	UMTGRL-35-1800	UMTGRL-SS35-1800	1800	790	815	285	310
	UMTGRL-35-2000	UMTGRL-SS35-2000	2000	890	915	360	385
	UMTGRL-35-2100	UMTGRL-SS35-2100	2100	940	965	395	420
MATERIAL	CARBON STEEL & ZINC	SS 304 & ZINC					
FOR	uPVC CASEMENT SYSTEM						
FINISH	ELECTROPLATED - CORROSION RESISTANCE AS PER BS-EN 1670						

*Universal Merchandising Hub*

# HINGES

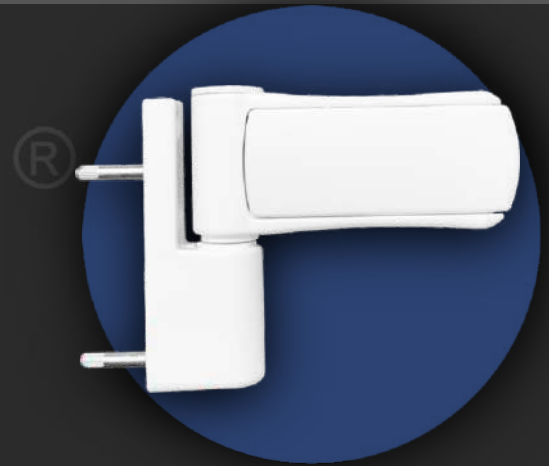


## PURANI DILLI 3D HINGE PRODUCT CODE: 3DHAL120-200PD

COLOUR: WHITE RAL-9016  
POWDER COATING THICKNESS 60-80 MICRONS  
MATERIAL - ALUMINIUM

## NAYI DILLI 3D HINGE PRODUCT CODE: 3DHZN120-200ND

COLOUR: WHITE RAL-9016  
POWDER COATING THICKNESS 60-80 MICRONS  
MATERIAL - ALUMINIUM



## 2D FLAT HINGE PRODUCT CODE: 2DFH80

COLOUR: WHITE RAL-9016  
POWDER COATING THICKNESS 60-80 MICRONS  
MATERIAL - ALUMINIUM/MS

## CONCEALED HINGE WINDOW PRODUCT CODE: CHW-201

COLOUR: WHITE RAL-9016  
POWDER COATING THICKNESS 60-80 MICRONS  
MATERIAL - ALUMINIUM/MS



# HINGES

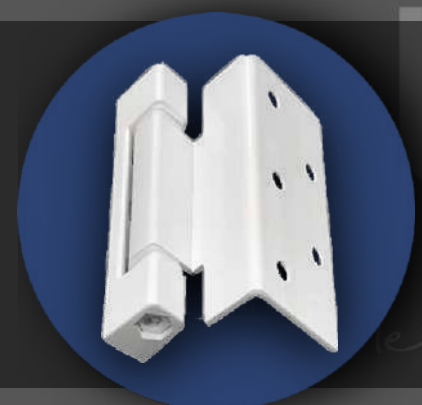


**CONCEALED HINGE DOOR**  
**PRODUCT CODE: CHW-202**

COLOUR: WHITE RAL-9016  
 POWDER COATING THICKNESS 60-80 MICRONS  
 MATERIAL - ALUMINIUM/MS

**BUTT HINGE 75 MM**  
**PRODUCT CODE: BH75AL**

COLOUR: WHITE RAL-9016  
 POWDER COATING THICKNESS 60-80 MICRONS  
 MATERIAL - ALUMINIUM/MS

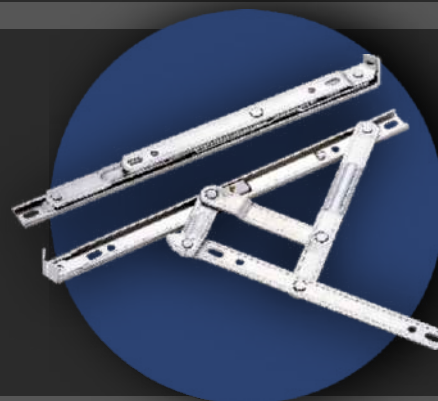


**CONCEALED L HINGE**  
**PRODUCT CODE: CLH-203**

COLOUR: WHITE RAL-9016  
 POWDER COATING THICKNESS 60-80 MICRONS  
 MATERIAL - ALUMINIUM/MS

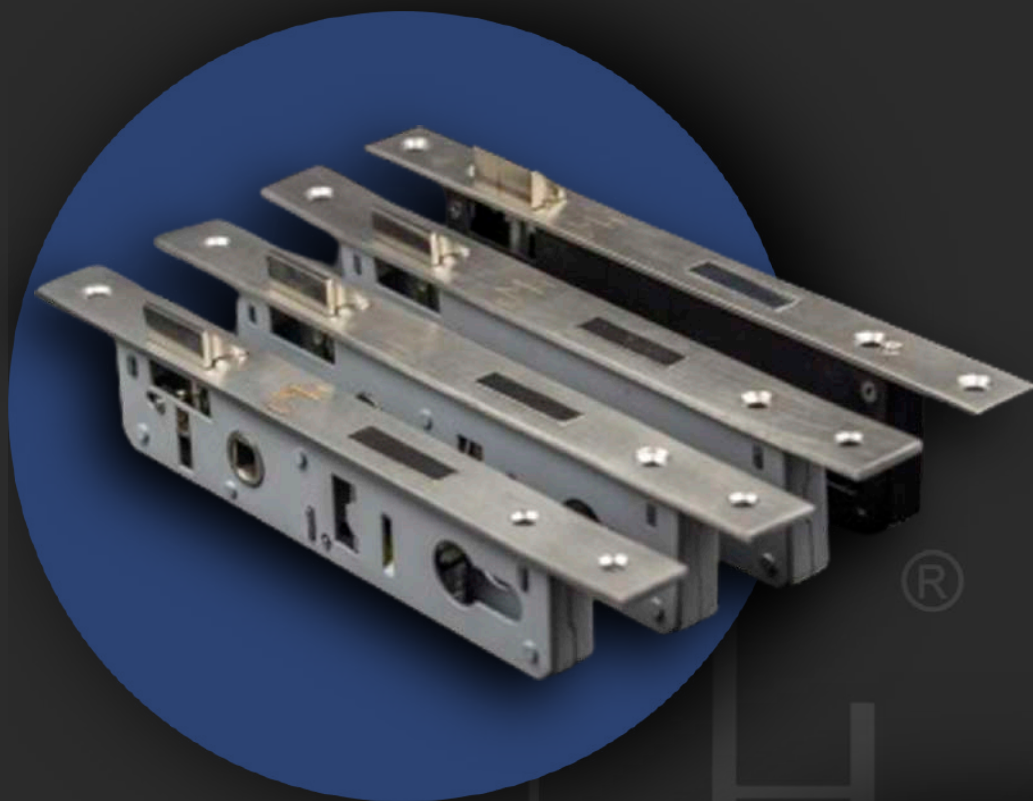
**FRICTION STAY**  
**PRODUCT CODE: FS/SS202/MENTION SIZE**  
**PRODUCT CODE: FS/SS304/MENTION SIZE**

Thickness	2mm & 2.5mm								
Size in mm	200mm	250mm	300mm	350mm	400mm	450mm	500mm	550mm	500mm
Size in inch	8"	10"	12"	14"	16"	18"	20"	22"	24"



**ARM STAY**  
**PRODUCT CODE: AS/SS202/MENTION SIZE**  
**PRODUCT CODE: AS/SS304/MENTION SIZE**

# LOCK BODIES FOR ALUMINIUM & uPVC DOORS

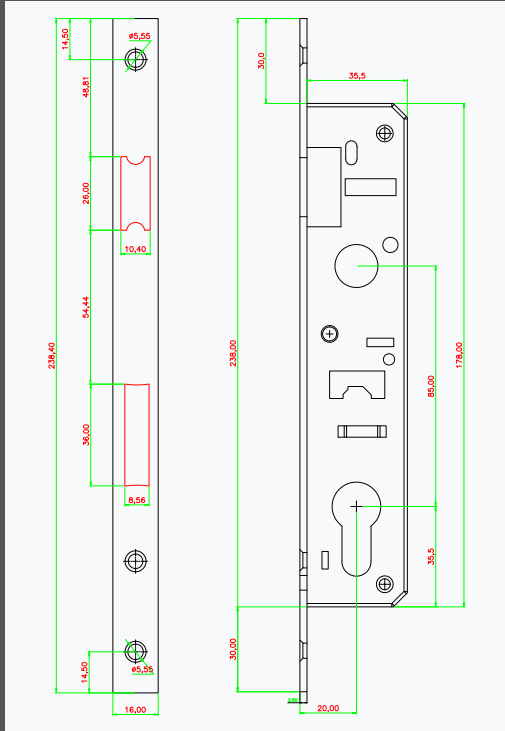


Uni  
Merch

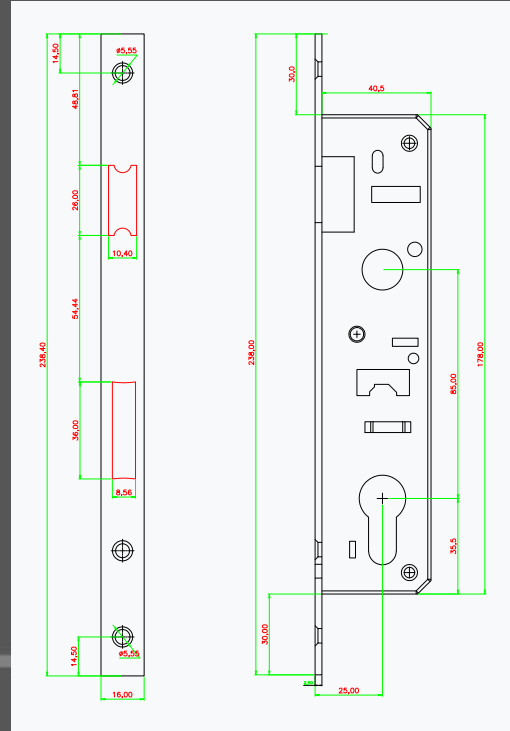


# LOCK BODY FOR uPVC DOORS

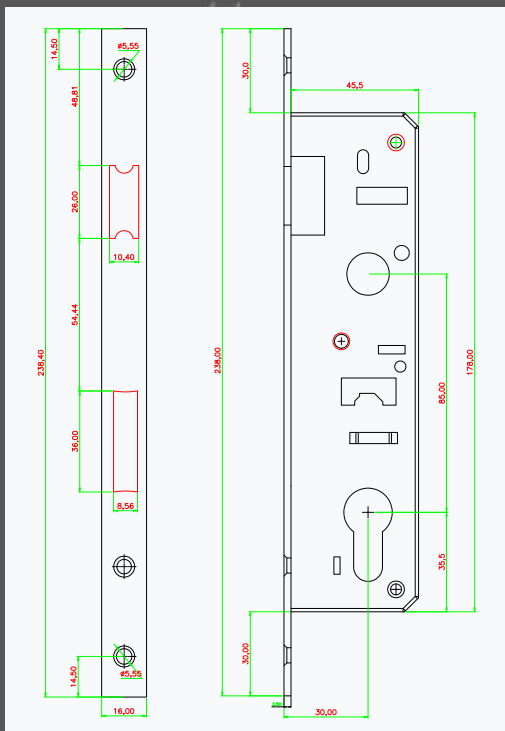
**MORTISE LOCK BODY 20\*85MM**  
**PRODUCT CODE: MLBS2085-90AL**



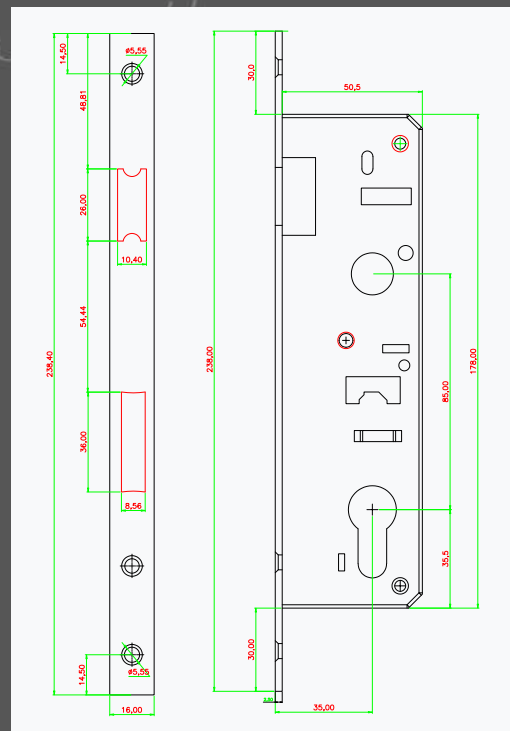
**MORTISE LOCK BODY 25\*85MM**  
**PRODUCT CODE: MLBS2585-90AL**



**MORTISE LOCK BODY 30\*85MM**  
**PRODUCT CODE: MLBS3085-90AL**



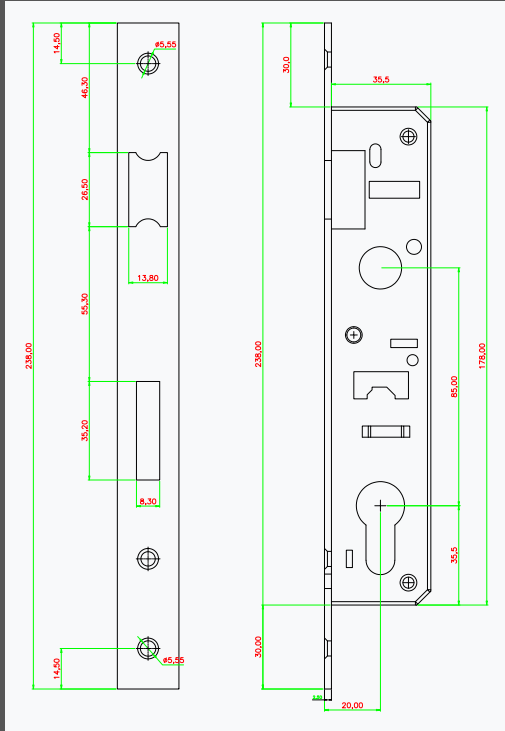
**MORTISE LOCK BODY 35\*85MM**  
**PRODUCT CODE: MLBS3585-90AL**



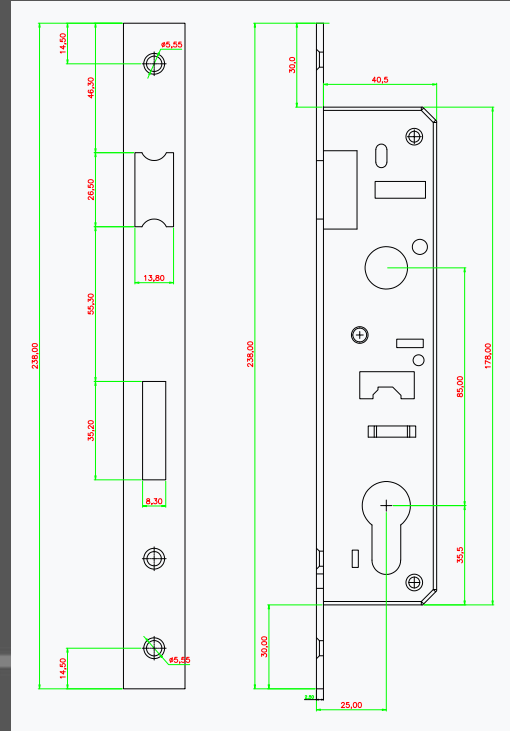
**COLOUR : GREY AND BLACK, POWDER COATING THICKNESS 60-80 MICRONS**  
**MATERIAL - COMPLETE STEEL / FRONT PLATE IN SS, SINGLE BULLET SQUARE (ZINC)**

# LOCK BODY FOR ALUMINIUM DOORS

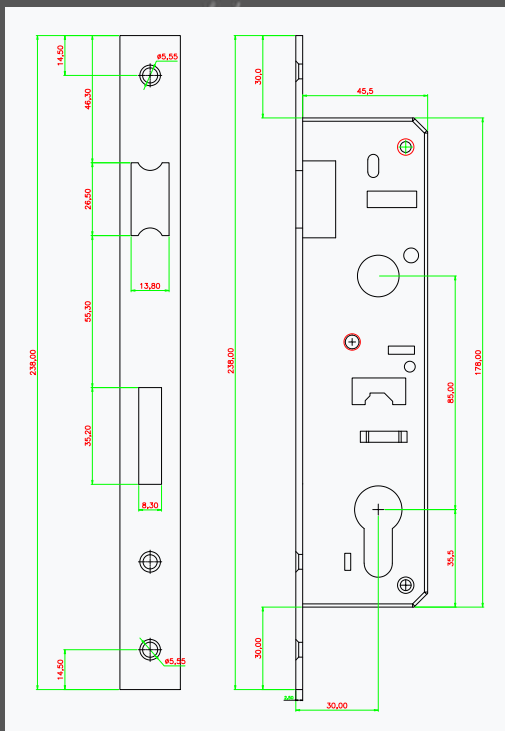
**MORTISE LOCK BODY 20\*85MM**  
**PRODUCT CODE: MLBS2085-90AL**



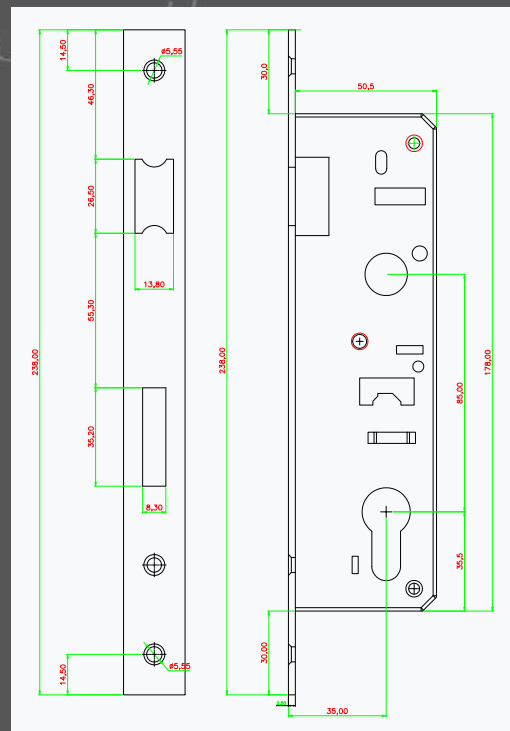
**MORTISE LOCK BODY 25\*85MM**  
**PRODUCT CODE: MLBS2585-90AL**



**MORTISE LOCK BODY 30\*85MM**  
**PRODUCT CODE: MLBS3085-90AL**

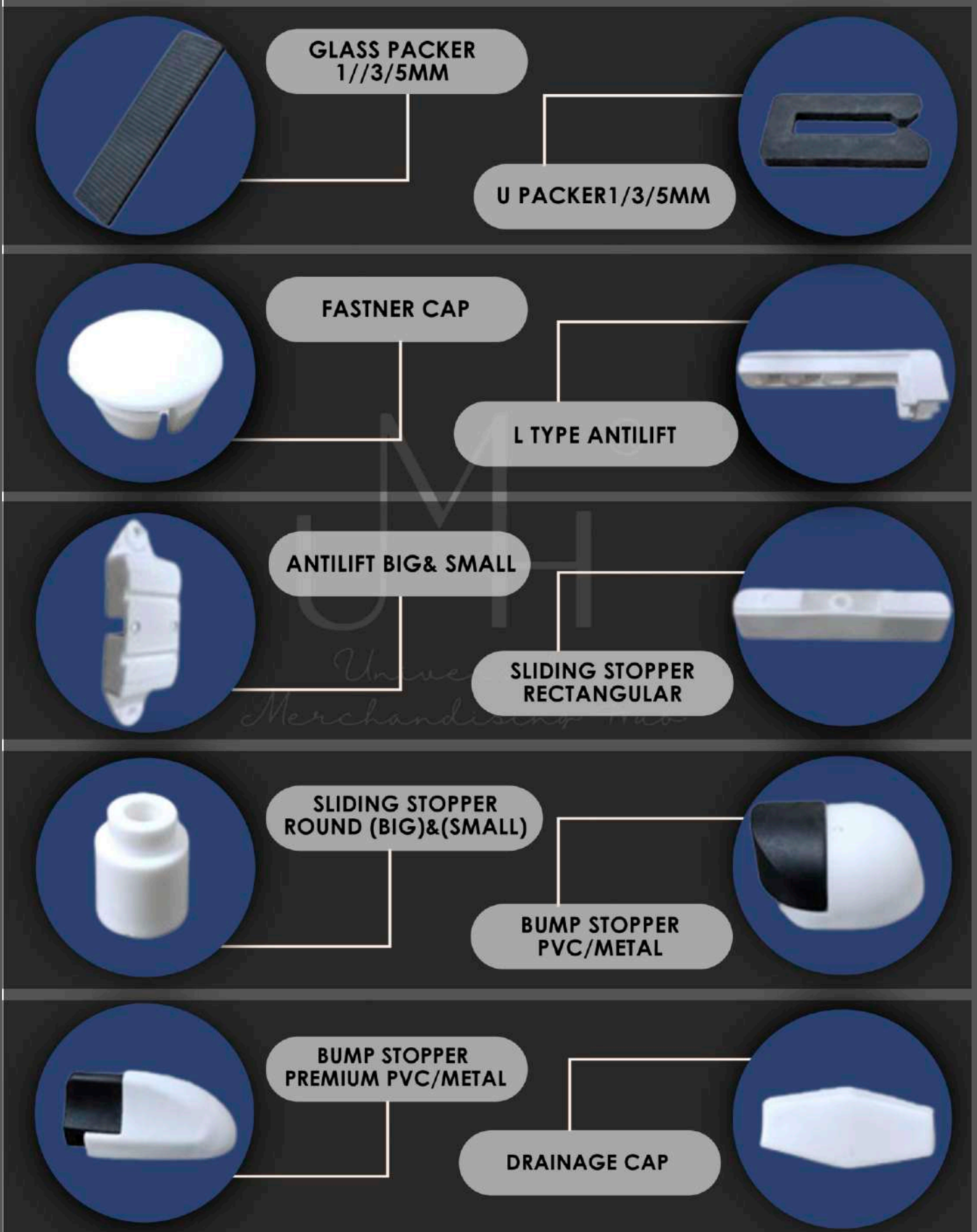


**MORTISE LOCK BODY 35\*85MM**  
**PRODUCT CODE: MLBS3585-90AL**



**COLOUR : GREY AND BLACK, POWDER COATING THICKNESS 60-80 MICRONS**  
**MATERIAL - COMPLETE STEEL / FRONT PLATE IN SS, SINGLE BULLET SQUARE (ZINC)**

# ACCESSORIES

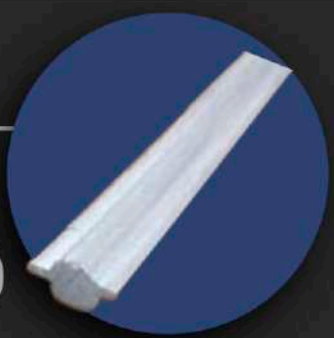




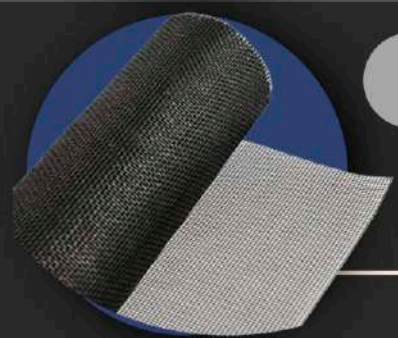
# ACCESSORIES



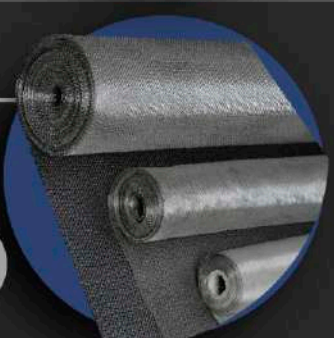
**ALUMINUM TRACK SEMI SOLID**



**ALUMINUM TRACK SOLID**



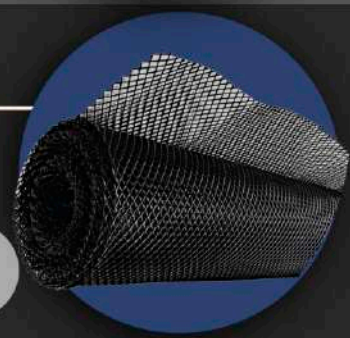
**BB BLACK MESH**



**SS NATURAL MESH**



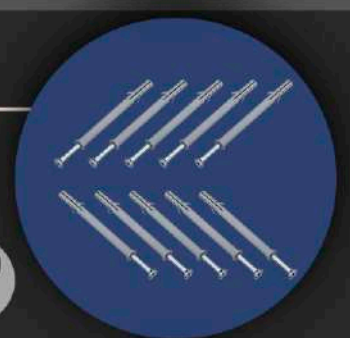
**SD Screw & PVC Screw MS/SS202/SS304**



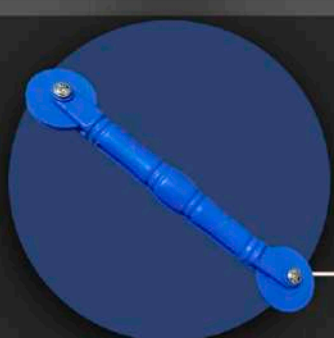
**NYLON MESH**



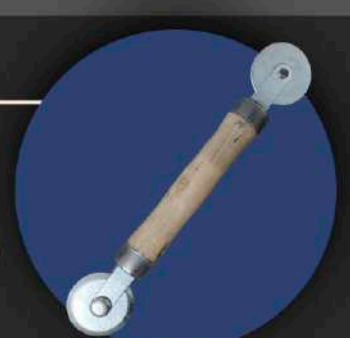
**GASKET**



**FASTENER 8by 80 & 8by 100 MS/SS202/SS304**



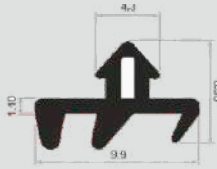
**MESH TOOL PVC**



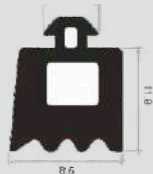
**MESH TOOL WOODEN**

# GASKETS

(EPDM) SEAL YOUR DOOR N WINDOWS)



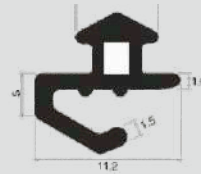
UMH 47 1MM



UMH 47 1MM



UMH 260 TYPE



UMH 256



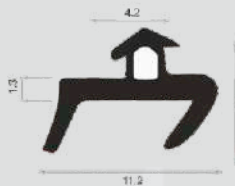
UMH 114



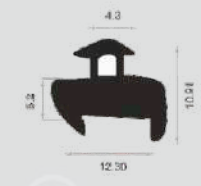
UMH 295 STAR GASKIT 3MM



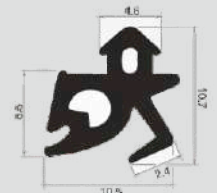
UMH 168 STAR GASKIT 8MM



UMH 27



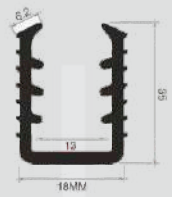
UMH 466



UMH 99



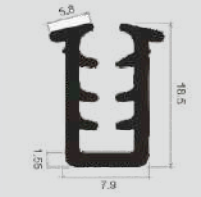
UMH 144



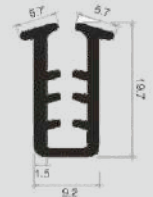
UMH 146



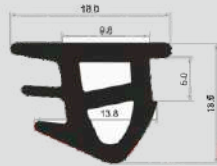
UMH 190



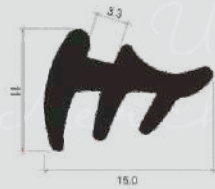
UMH 191



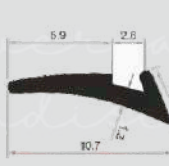
UMH 119



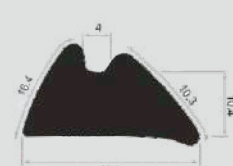
UMH 74



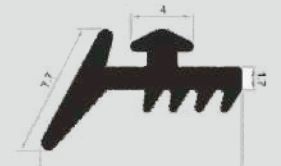
UMH 122



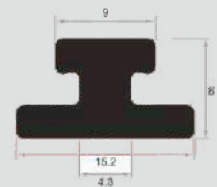
UMH 60



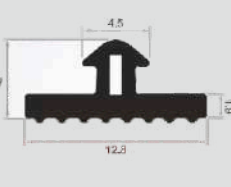
UMH 157



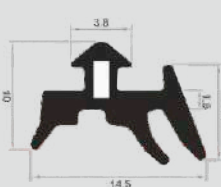
UMH 19



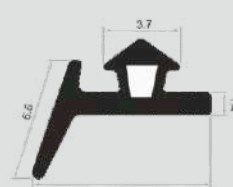
UMH 222



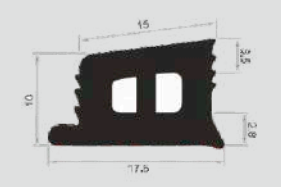
UMH 21



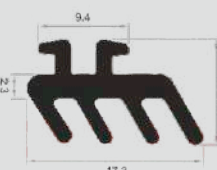
UMH 23



UMH 142



UMH 223



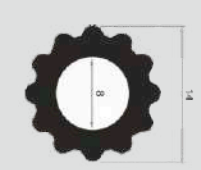
UMH 214



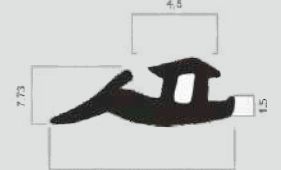
UMH 1 [8MM]



UMH 13 [16MM]



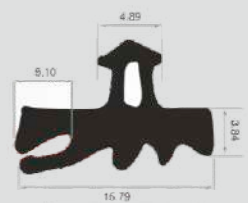
UMH 383



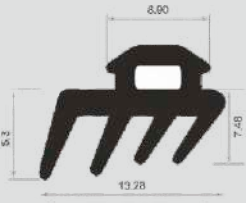
UMH 398

# GASKETS

(EPDM) SEAL YOUR DOOR N WINDOWS)



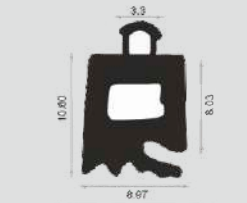
**UMH 291**



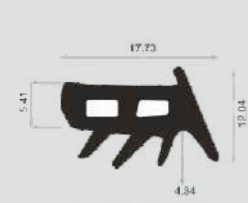
**UMH 471**



**UMH 436**



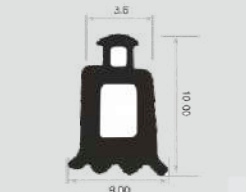
**UMH 447**



**UMH 396**



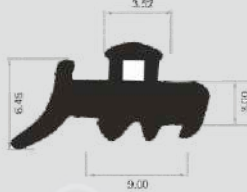
**UMH 397**



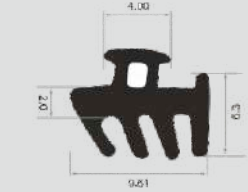
**UMH 451**



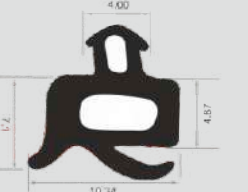
**UMH 495**



**UMH 446**



**UMH 450**



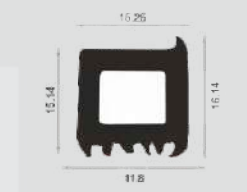
**UMH 470**



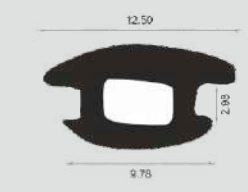
**UMH 467**



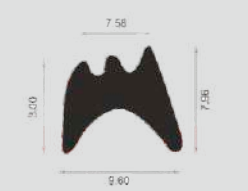
**UMH 326**



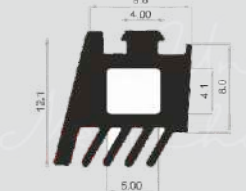
**UMH 264**



**UMH 193**



**UMH 498**



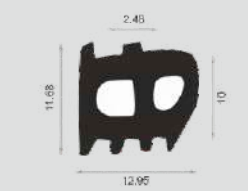
**UMH 456**



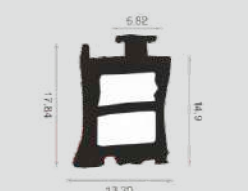
**UMH 454**



**UMH 432**



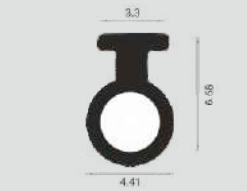
**UMH 433**



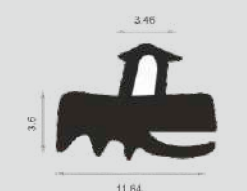
**UMH 437**



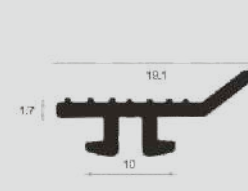
**UMH 406**



**UMH 412**



**UMH 485**



**UMH 325**



**UMH 274**



**UMH 445**



**UMH 387**



**UMH 392**



**UMH 479**

# GASKETS

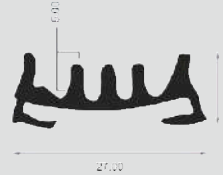
(EPDM) SEAL YOUR DOOR N WINDOWS)



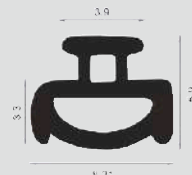
**UMH 35**



**UMH 32**



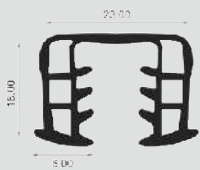
**UMH 472**



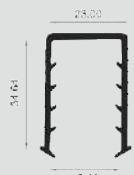
**UMH 347**



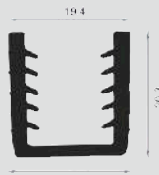
**UMH 441**



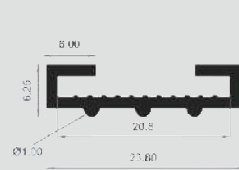
**UMH 426**



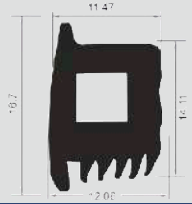
**UMH 352**



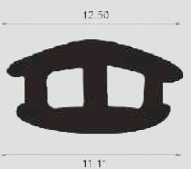
**UMH 350**



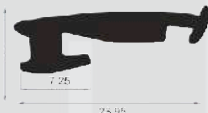
**UMH 395**



**UMH 351**



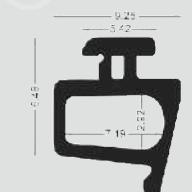
**UMH 213**



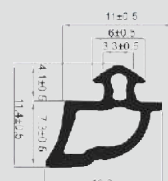
**UMH 275**



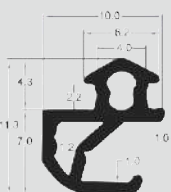
**UMH 5010**



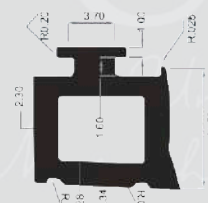
**UMH 5006**



**UMH 5001**



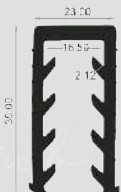
**UMH 5002**



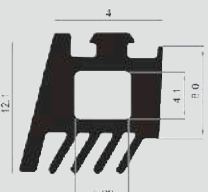
**UMH 359**



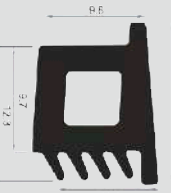
**UMH 399**



**UMH 385**



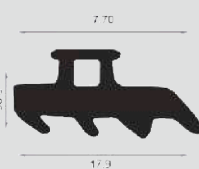
**UMH 456**



**UMH 455**



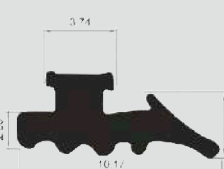
**UMH 448**



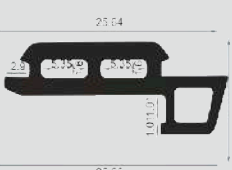
**UMH 434**



**UMH 391**



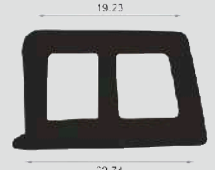
**UMH 365**



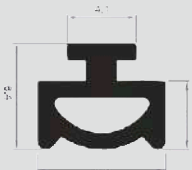
**UMH 5007**



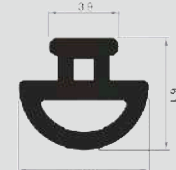
**UMH 460**



**UMH 358**



**UMH 72**



**UMH 59**

QUALITY  
THAT  
ENDURES



Manufacturer of Lock Bodies for UPVC and Aluminium Door n Windows  
Sizes : 20/85, 25/85, 30/85, 35/85

UMH<sup>®</sup>  
Universal  
Merchandising Hub  
THE PERFECT CHOICE  
MANUFACTURER, EXPORTER AND SUPPLIER



# UNBREAKABLE.

PERFORMANCE



Quality that  
Upholds  
Aesthetics



For more details scan the above QR code

UMH<sup>®</sup>

*Universal  
Merchandising Hub*  
THE PERFECT CHOICE  
MANUFACTURER, EXPORTER AND SUPPLIER

Regd. Office Address : 1715 U.E | Huda Sector 04 | Gurgaon 122001 | Haryana | India



+91 8178915066



umhworld.com



info@umhworld.com