An abstract painting featuring a dense composition of thick, expressive brushstrokes. The color palette is rich and varied, dominated by deep blues and teals, with vibrant greens, pinks, and earthy oranges. The texture is highly tactile, with visible ridges and valleys of paint. The overall effect is one of dynamic energy and complex visual information.

MAPS  
CATALOGUE  
ANNIE ASHWELL

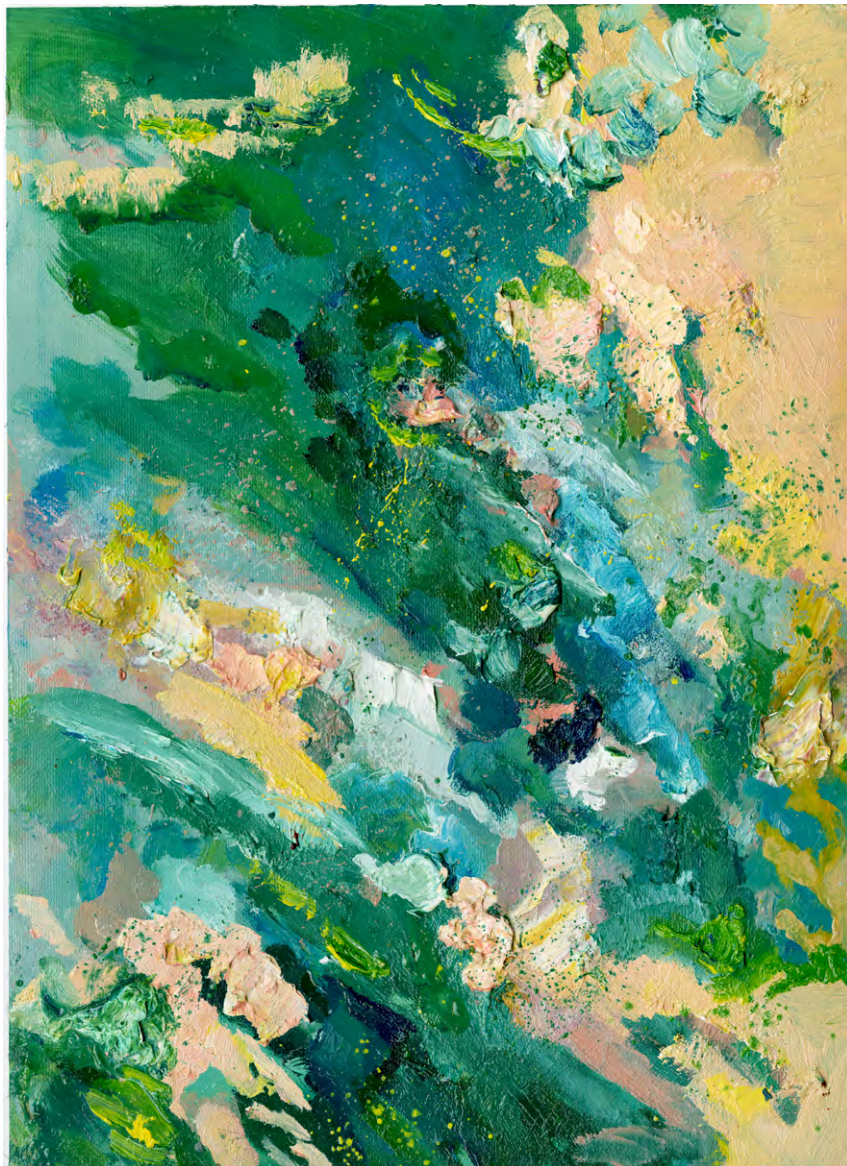


## MAPS

### OIL ON PAPER COLLECTION

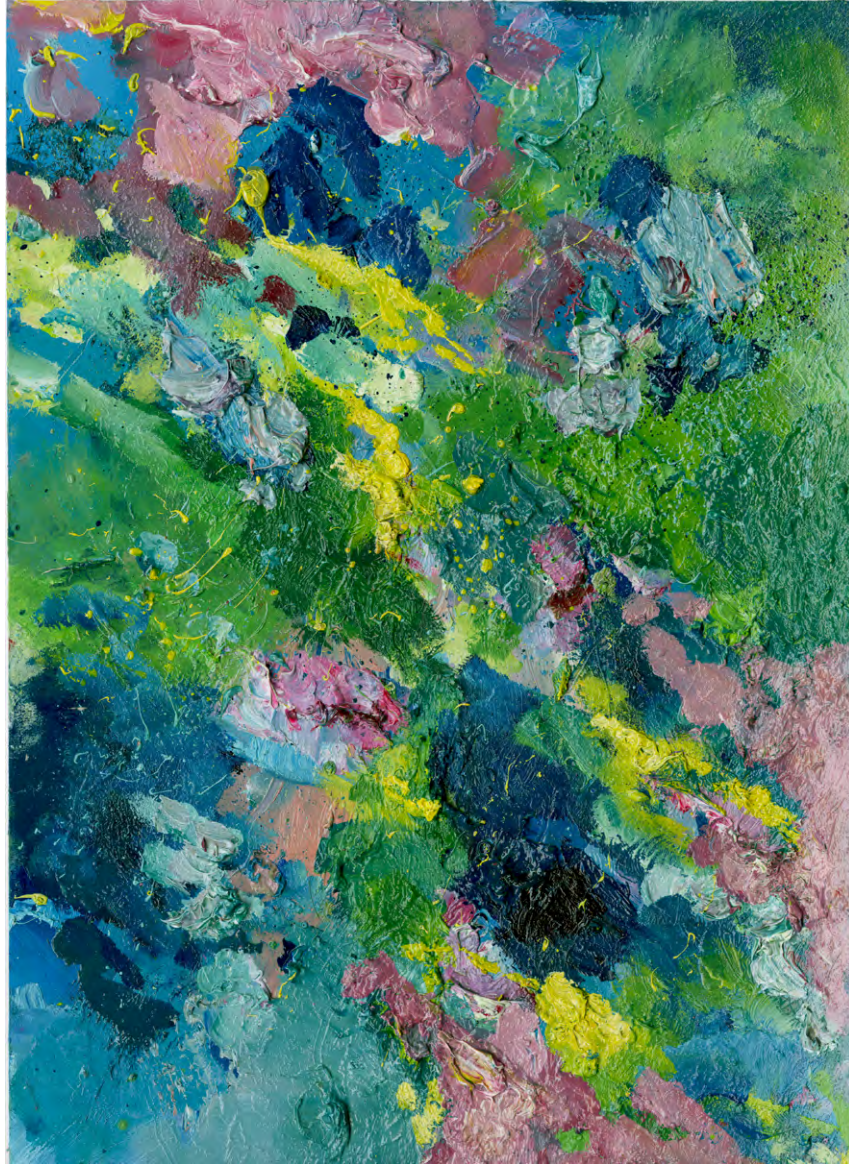
*'My oil on paper collection, maps, is a collection of small studies that navigates places which are more desirable. The current state of the world at the moment, being anxiety-driven, chaotic and full of greed. Maps is a collection that is an attempt to see beauty beyond the chaos. Full of colour, texture and chaotic mark, the map-like mark making lets you tell your own story. Giving dream like titles to the paintings, in sense of finding inner peace.*

*'In the maps, the lines still aren't connected, and probably never will be. This collection is representative of the beauty in uncomfortability'*

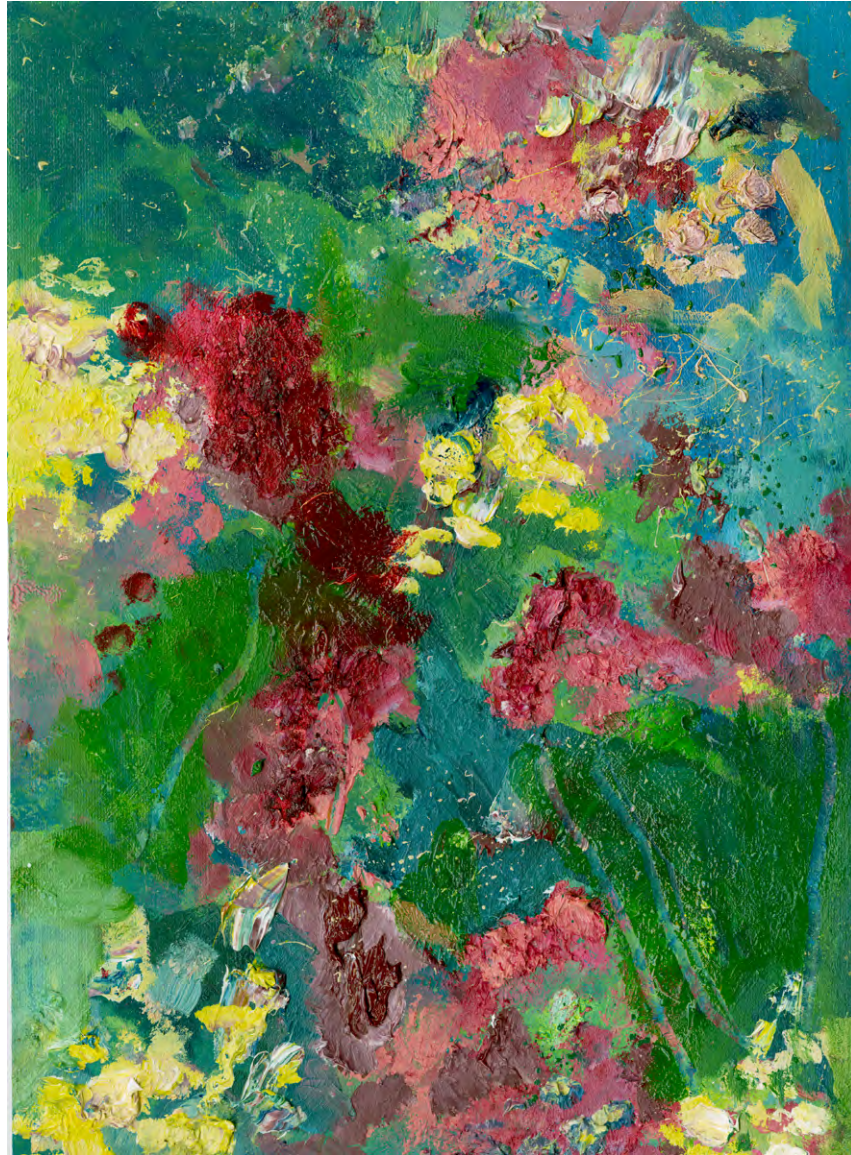


I can be a mermaid  
oil on paper, 210 x 297mm  
2023





Look up here, I'm in heaven  
oil on paper, 210 x 297mm  
2023



savage garden  
oil on paper, 210 x 297mm  
2023





space oddity  
oil on paper, 210 x 297mm  
2023





head above water  
oil on paper, 210 x 297mm  
2023





roses aren't always red, see a rainbow  
oil on paper, 210 x 297mm  
2023



## INFORMATION AND PRICING

*This catalogue is for direct sales with Contemporary Painter, Annie Ashwell*

*All paintings in the collection are sold at the price of £200, plus P&P.*

- *Worldwide shipping available*
- *All paintings in the catalogue are original, and copyright to artist Annie Ashwell. A certificate of authenticity will be given with any purchase made,*
- *Client will receive invoice and receipt as proof of purchase.*
- *Refunds and returns are not available, but for example, should painting be damaged in transport etc, or client is*
- *unhappy for whatever reason, this can be discussed further.*
- *Contact and inquiries can be made via email at [paintings@annieashwell.com](mailto:paintings@annieashwell.com).*
- *If you are interested in a piece, and would like additional photos / videos, please do not hesitate to get in touch*
- *All paintings are wrapped carefully and with precision to detail to minimise the chance of any potential damage*
- *All paintings are signed with small signature in bottom right hand corner in white oil*