

# ANCIENT EARTH HOMESTEAD

**DISTANCE FROM VENUE 5.4 KM**

**CHECK IN 14:00**

**CHECK OUT 12:00**

Here, you can enjoy a fully enclosed private flower garden filled with herbs and veggies. Take in the breathtaking views that stretch across the Olive orchard, wetland, and mountain.

Inside, you will find a quaint kitchen with a gas stove, as well as a cozy braai area and fire pit for outdoor cooking and relaxation. Indulge in the luxury of a Victorian bath, enhanced by the soft glow of candles and stunning mountain vistas.

If you need more space or plan to bring additional guests, you have the option to book additional homes on the farm. The maximum occupancy for the property is 24 guests.





# MIGDASH

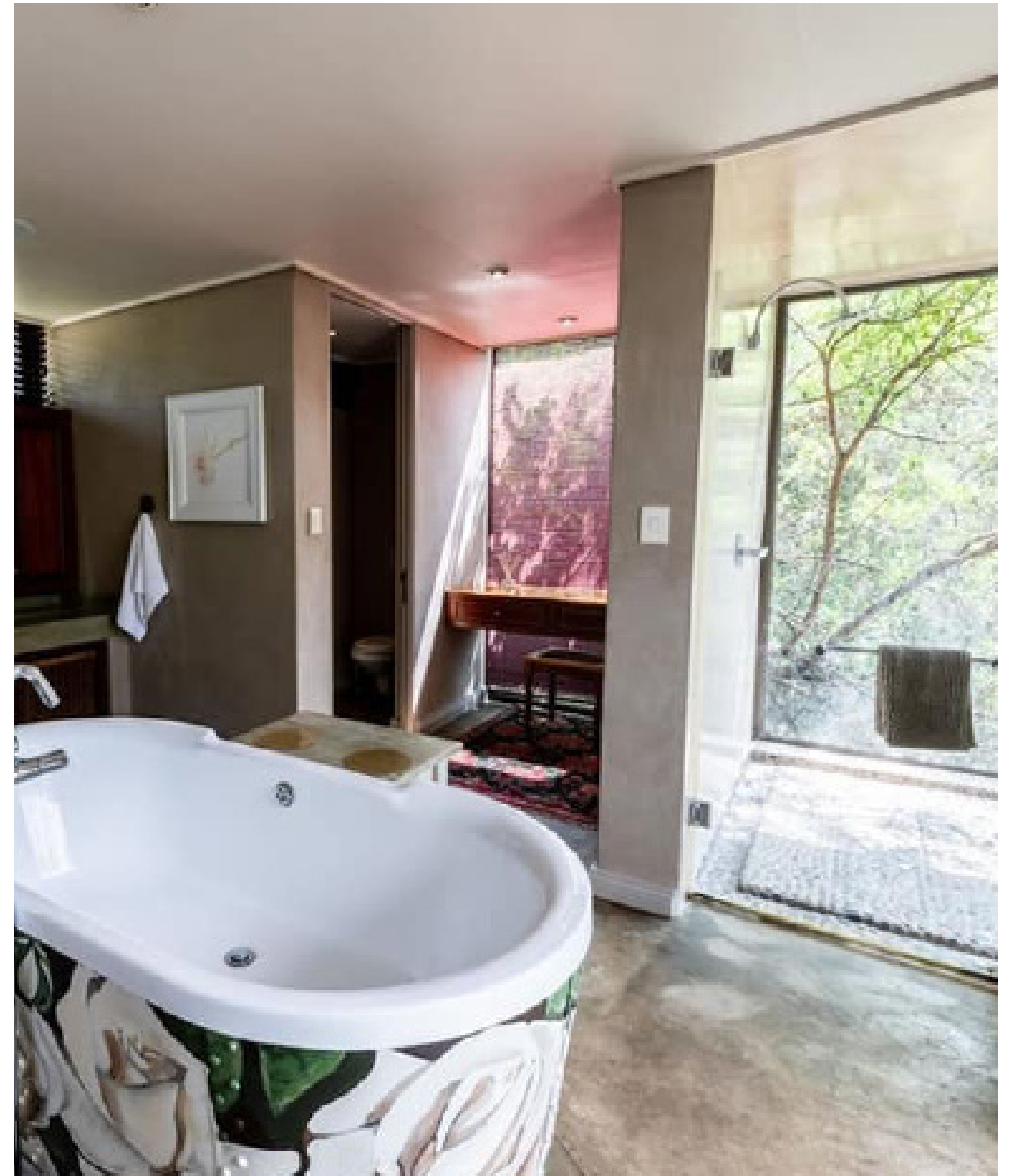
**DISTANCE FROM VENUE 17 KM**

**CHECK IN 14:00**

**CHECK OUT 12:00**

During your stay, you will have the wonderful opportunity to make use of the exceptional amenities at Magalies Park Resort. Enjoy a wide range of activities including cold and heated pools, tennis courts, golf, squash, boat trips, hiking trails, fishing, and much more, all included in your stay.

In addition, if you require additional rooms or need extra space, you have the option to book additional rooms in the house. Please note that the maximum occupancy for the house is 22 guests.



# HOW TO BOOK

We want your special day to be as flawless as possible. To ensure that everything goes smoothly, please communicate your choices to your function manager as soon as possible. You are welcome to email or message them on Whatsapp, whichever suits you best.

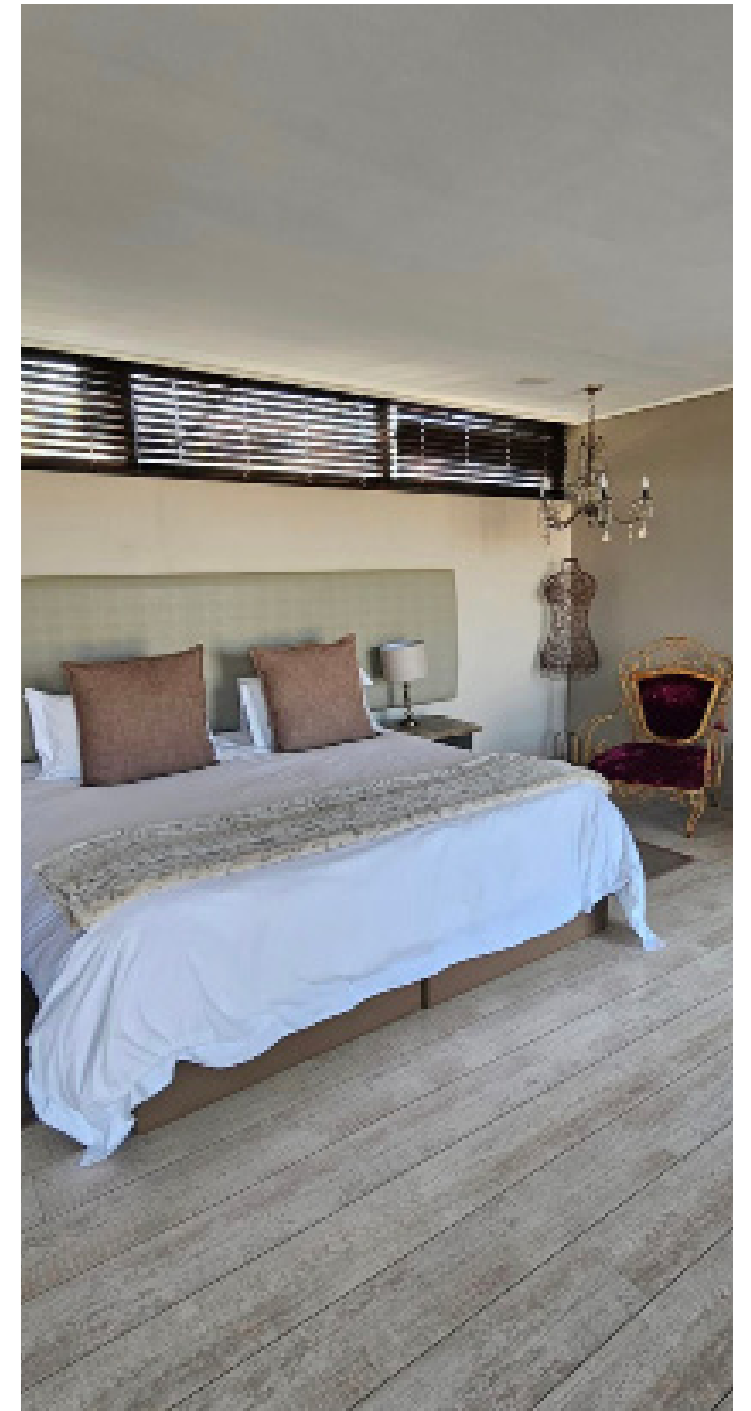
If you would like to exchange your date in order to get ready, please note that it is subject to availability. Please also check the check-in and check-out times to ensure that you have ample time. In the event that you need more time, we recommend adding additional nights to your stay.

If you plan to invite additional guests, please note that some locations have a two-night minimum stay requirement.

We offer shuttle services to our guests upon request. If you require this service, please do not hesitate to enquire with your function manager.



*Ancient Earth Homestead*



*Migdash*



# GREAT STAYS CLOSE BY FOR GUESTS



## LITTLE SWIFT

16 Guests (8 Rooms)

1.9km from The Nut Farm venue

The Magalies river winds around the farm and the 8 chalets are situated on a horse shoe bend of the river. Each chalet is between 30m-50m apart, overlooking the river and offering complete privacy providing an ideal venue for a break-away weekend with your significant other.

[www.swiftchalets.co.za](http://www.swiftchalets.co.za)

+27 83 262 4053  
[info@swiftchalets.co.za](mailto:info@swiftchalets.co.za)



## ANCIENT EARTH HOMESTEAD

12 Guests ( 6 Rooms)

5.4km from The Nut Farm venue

This property can accommodate 12 adults and 2 children and comprises 6 en-suite bedrooms and 2 guest toilets.

<https://www.lekkeslaap.co.za/accommodation/ancient-earth-homestead--bluebird-estate>

082 788 0081



## MILLSTREAM INN

18 Guests (5 Rooms)

5.7km from The Nut Farm venue

Set in Hartbeespoort, 16 km from Aerial Cableway Hartbeespoort, Millstream Inn guest house offers accommodation with a garden, free private parking, barbecue facilities and a terrace.

[www.millstreaminnguesthouse.hotelonia.com](http://www.millstreaminnguesthouse.hotelonia.com)

072 624 4708



## LA BASTIDE

3 Guests (8 Rooms)

9.9km from The Nut Farm venue

La Bastide provides a rustic, charming and unique guest accommodation in the valley of the timeless Magaliesberg mountain range, close to the Hartbeespoort Dam

[www.labastide.co.za](http://www.labastide.co.za)

+27 73 283 9654  
[info@labastide.co.za](mailto:info@labastide.co.za)



# GREAT STAYS CLOSE BY FOR GUESTS



## SKY LODGE

40 Guests (3 Lodges)

16.4km from The Nut Farm venue

Sky Lodge has 3 exclusive private lodges on top of the hill.

[www.skylodge.co.za](http://www.skylodge.co.za)

082 903 3013  
[skylodge@mweb.co.za](mailto:skylodge@mweb.co.za)



## RIVENDELL HOUSE

8 Guests (4 Rooms)

16.4km from The Nut Farm venue

Rivendell House is situated in Hartbeespoort Dam, North West an area best known for its horse trails, river rafting, hot air ballooning, and iconic attractions.

[www.lekkerslaap.co.za](http://www.lekkerslaap.co.za)

084 312 5426



## BLUE CRANE VILLA

8 Guests (4 Rooms)

14.3km from The Nut Farm venue

Surrounded by the tranquil beauty of Hartbeespoort, The Blue Crane Villa offers a peaceful and private stay coupled with sophisticated simplicity, and luxurious comforts.

[www.thebluecranevilla.com](http://www.thebluecranevilla.com)

082 452 8117  
[gerda@thebluecranevilla.com](mailto:gerda@thebluecranevilla.com)



## BROWNS CABINS

10 Guests (5 Rooms)

5.8km from The Nut Farm venue

Brown's Cabin and Cottages are situated on a pecan nut farm in Scheerpoort, situated in the North West region of South Africa

<http://www.brownsabin.co.za/>

083 747 9468 / 082 863 3359  
[bookings@brownsabin.co.za](mailto:bookings@brownsabin.co.za)



# GREAT STAYS CLOSE BY FOR GUESTS



## THE MEADOWS AT MILLSTREAM

14 Guests (7 Rooms)

6.5km from The Nut Farm venue

Welcome to The Meadows at Millstream, where your stay with us, nestled at the foot of the majestic Magaliesburg Mountains, is sure to be one to remember.

[www.themeadowsatmillstream.co.za](http://www.themeadowsatmillstream.co.za)

[info@themeadowsatmillstream.co.za](mailto:info@themeadowsatmillstream.co.za)

082 821 2054

## BASIL'S BOMA

6 Guests ( 2 units)

7km from The Nut Farm venue

Each offers spacious secluded outdoor areas with loungers, splash/plunge pools, boma braai areas, fire pits, outdoor showers, cosy indoor fire places, comfy couches and quirky décor.

[www.basilsboma.co.za](http://www.basilsboma.co.za)

[info@basilsboma.co.za](mailto:info@basilsboma.co.za)

27 (0)83 245 4373

## DIE OU PASTORIE

6 Guests (3 Rooms)

8.5km from The Nut Farm venue

Die Ou Pastorie is situated on the edge of the Cradle of Humankind, near the foothills of the Magaliesberg mountain range.

[www.dieoupastorie.co.za](http://www.dieoupastorie.co.za)

[info@dieoupastorie.com](mailto:info@dieoupastorie.com)

071 328 6102 / 082 460 7310

## HIGHLANDER TROUT LODGE

23 Guests (4 units)

9.1km from The Nut Farm venue

We offer luxury self-catering accommodation in individually furnished cottages. This is the ideal place for the fly fishing enthusiast or for a peaceful and relaxed getaway.

[www.highlanderlodge.co.za](http://www.highlanderlodge.co.za)

[highlander@highlanderlodge.co.za](mailto:highlander@highlanderlodge.co.za)

083 453 1564 / 083 251 6833



# GREAT STAYS CLOSE BY FOR GUESTS



## THE TANGAROA STRAWBERRY FARM

6 Guests ( 3 Rooms)

9.6km from The Nut Farm venue

Originally a sheep speculation farm, dating back to 1881, with extremely fertile clay soil, it soon found new life as a strawberry farm starting with a mere 500 strawberry plants.

[www.thestrawberryfarm.co.za](http://www.thestrawberryfarm.co.za)

[reservations@thestrawberryfarm.co.za](mailto:reservations@thestrawberryfarm.co.za)

082 503 5996



## PECANBERRY FARM

8 Guests ( 4 units)

10km from The Nut Farm venue

Welcome to Pecanberry Farm, our family-owned and operated organic farm and artist retreat, sprawling across 83 acres of land in the picturesque Hartbeespoort .

<https://www.lekkeslaap.co.za/accommodation/pecanberry-farm>

082 726 8955



## GREENWILLOWS GUEST HOUSE

10 Guests ( 5 Units )

12km from The Nut Farm venue

Green Willows Guest House offers guest rooms and is located in Skeerpoort, Hartbeespoort. Ideal for guests looking for a comfortable stopover, close to Hartbeespoort Dam and other attractions.

<https://www.lekkeslaap.co.za/accommodation/green-willows-guest-house>

082 455 1269



## IBIS WAY GUEST HOUSE

8 Guests ( 4 Rooms)

15km from The Nut Farm venue

Ibis Way House offers Hartbeespoort accommodation in the Westlake Country and Safari Estate. With wide open spaces and pretty views of the mountain range, Ibis Way House is a gorgeous and tranquil retreat.

<https://www.sa-venues.com/visit/ibiswayhouse/>

063 267 6637





THERE ARE OVER 1000 AIRBNB OPTIONS IN THE AREA, BELOW ARE JUST A FEW SNIPPETS



Entire home

6 guests, 3 bedrooms, 3 beds, 3.5 baths

Set on the Kosmos shoreline, this Monaco Style Development offers a Mediterranean feel with a touch of thatch and magnificent uninterrupted views of the dam. This is a hosting for a group of 6 people.

Link below

[https://www.airbnb.co.za/rooms/817859916440375298?check\\_in=2023-07-20&check\\_out=2023-07-21&source\\_impression\\_id=p3\\_1689153971\\_pgiECd%2B68aXZ2JcP&previous\\_page\\_section\\_name=1000&federated\\_search\\_id=afc8c12e-1d08-4504-9be5-f45d057f4e52](https://www.airbnb.co.za/rooms/817859916440375298?check_in=2023-07-20&check_out=2023-07-21&source_impression_id=p3_1689153971_pgiECd%2B68aXZ2JcP&previous_page_section_name=1000&federated_search_id=afc8c12e-1d08-4504-9be5-f45d057f4e52)



Entire home

6 guests, 3 bedrooms, 3 beds, 3 baths

Just a short drive from joburg, find this beautiful house on the golf course with amazing Mountain View's. Perfect weekend get away with family and friends. Ideal for golfing trips, fishing trips, wedding accommodation, biking weekend.

Safe and secure with a boat house and club house restaurant, kids play areas and recreation access.

Link below

[https://www.airbnb.co.za/rooms/914283179514095839?check\\_in=2023-07-20&check\\_out=2023-07-21&source\\_impression\\_id=p3\\_1689154121\\_Z9n6pNA7F8ZdoZBy&previous\\_page\\_section\\_name=1000&federated\\_search\\_id=1943134e-4976-4e7f-97a0-0cdbac445ea7](https://www.airbnb.co.za/rooms/914283179514095839?check_in=2023-07-20&check_out=2023-07-21&source_impression_id=p3_1689154121_Z9n6pNA7F8ZdoZBy&previous_page_section_name=1000&federated_search_id=1943134e-4976-4e7f-97a0-0cdbac445ea7)



Entire unit

4 guests, 1 bedrooms, 1 bed, 1 bath

Keep it simple at this peaceful and centrally-located place. Hidden in the bush, private and rustic. Enjoy a big fire in your own private boma or inside fireplace or relax in your private mini pool.

Link below

[https://www.airbnb.co.za/rooms/844584293159553301?check\\_in=2023-07-20&check\\_out=2023-07-21&source\\_impression\\_id=p3\\_1689154200\\_08zC6niyx3LPLiBu&previous\\_page\\_section\\_name=1000&federated\\_search\\_id=0e3ee6ec-31fb-42f5-9d4d-bdae09922d15](https://www.airbnb.co.za/rooms/844584293159553301?check_in=2023-07-20&check_out=2023-07-21&source_impression_id=p3_1689154200_08zC6niyx3LPLiBu&previous_page_section_name=1000&federated_search_id=0e3ee6ec-31fb-42f5-9d4d-bdae09922d15)