



BALTIC TINY HOUSE

2026





WELCOME TO BALTIC TINY HOUSE

Baltic Tiny House was founded by two entrepreneurs. Radvile owns a design studio and created more than 20.000 sq.m. of public and private spaces. She is a head of design at Baltic Tiny House and created three versions of tiny houses: single floor, loft and tiny office.

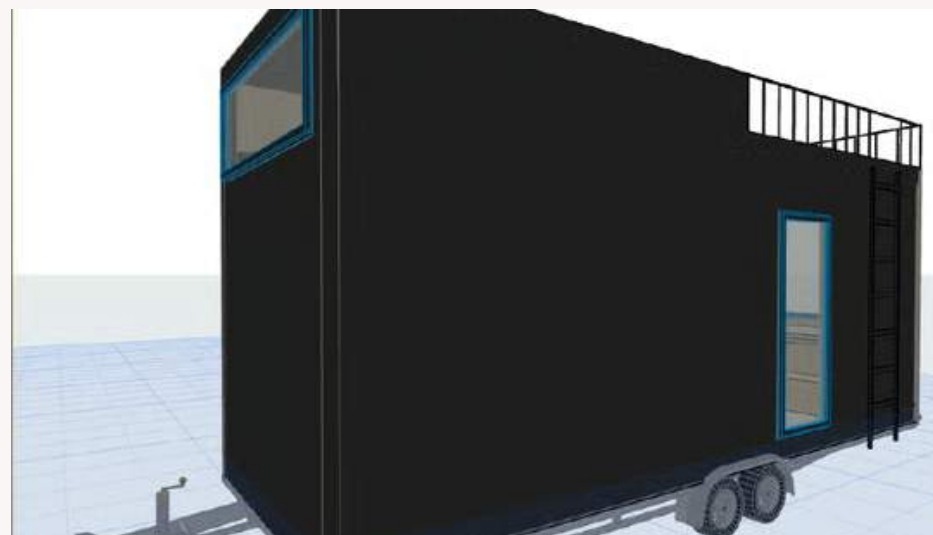
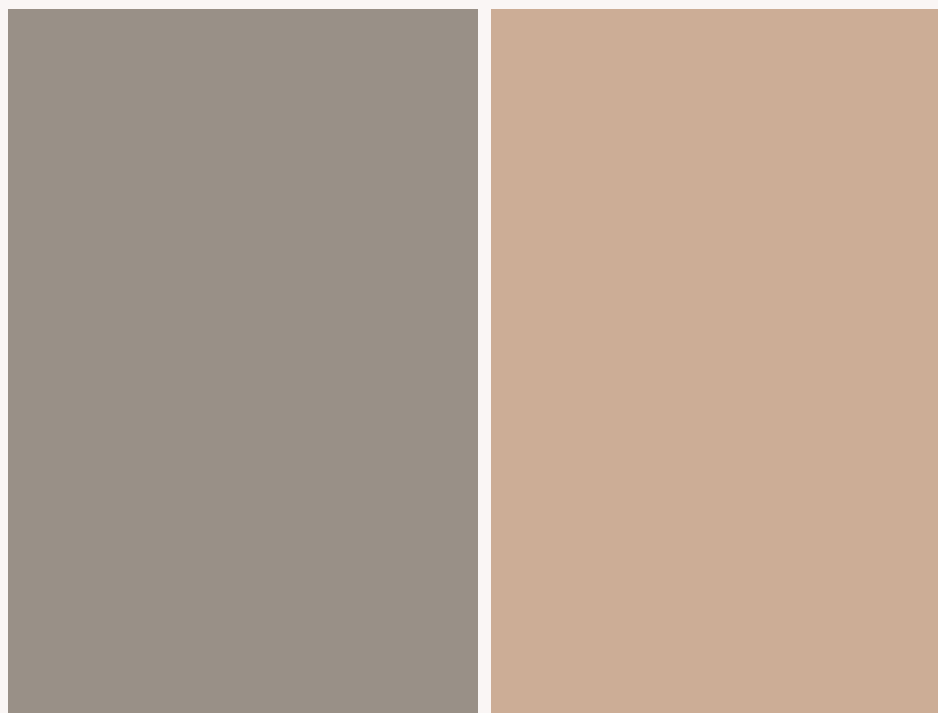
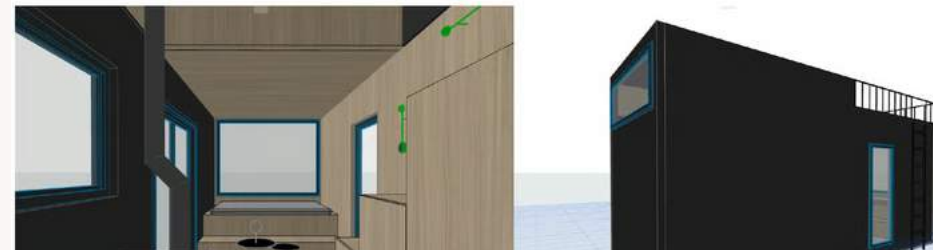
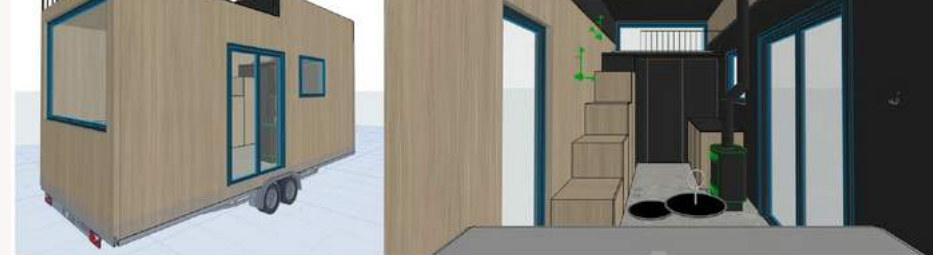
Aurimas has 14 years of experience in manufacturing and build firstly started a modular furniture company in 2014 and build 2 tiny houses for his family.

Tiny house on a trailer does not need a separate foundation and can be placed in distant areas or in a backyard of a house.

Today we export our tiny houses to multiple European countries.

enjoy

DESIGN



Our in-house designers carefully planned the tiny house with all the necessary parts of a daily life and selected the exterior and interior details that create cosy atmosphere in a tiny house.

We have three tiny house versions:

Option 1: Single Floor

Option 2: Loft

Option 3: Tiny office

Packages:

1) Basic. Includes exterior finish

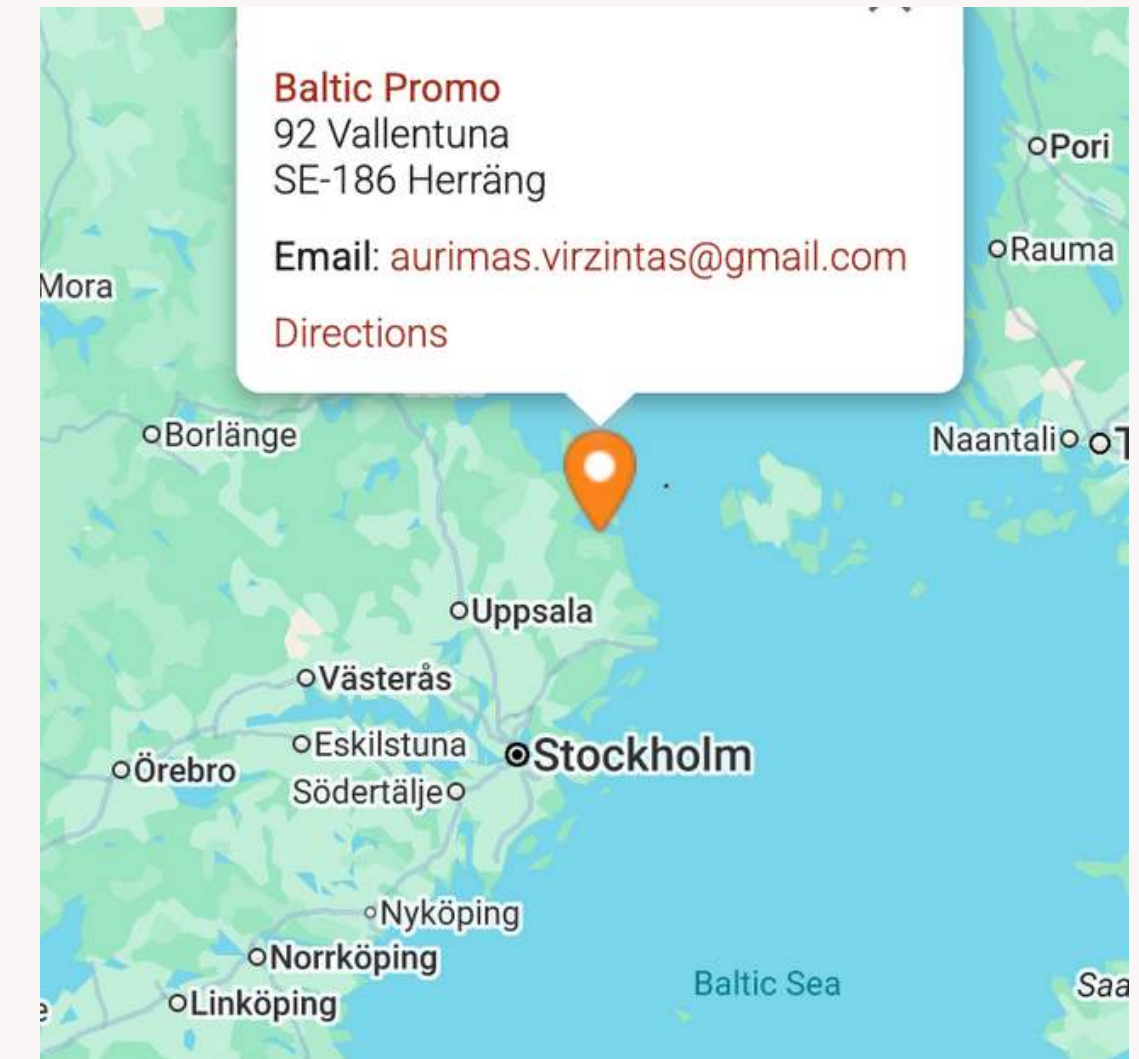
2) Standard. Includes exterior and interior finish, including electricity wiring, plumbing.

3) Off-grid. This is a fully furnished tiny house with dry toilet, solar panels, hybrid inverter and energy storage batteries.

VLEMMIX IS A PROMINENT EUROPEAN MANUFACTURER SPECIALIZING IN ROBUST TRAILERS. COMMERCIALLY PRODUCED, ROAD-LEGAL TRAILERS SERVE AS THE FOUNDATION FOR TINY HOUSES ON WHEELS (THOWS). THESE TRAILERS ARE DESIGNED TO SUPPORT SIGNIFICANT WEIGHT AND TYPICALLY INCLUDE ESSENTIAL FEATURES FOR ROAD TRANSPORT, SUCH AS TANDEM OR TRIPLE AXLES, BRAKING SYSTEMS, AND LIGHTING. THEY ARE A POPULAR CHOICE DUE TO THEIR DURABILITY AND SUITABILITY FOR TRANSPORTING TINY HOMES.



WE ARE DEALER OF VLEMMIX:



YOU CAN CHOOSE FROM TWO TYPES OF TRAILERS: ON WHEELS OR DETACHABLE



HOW IS IT MADE?

We are distributors of Vlemmix trailers which is a perfect fit to build Tiny houses for their durability and dimensions.

Construction is made of light gauge steel or timber.

PIR and mineral wool is used for insulation, water and pressure resistance.

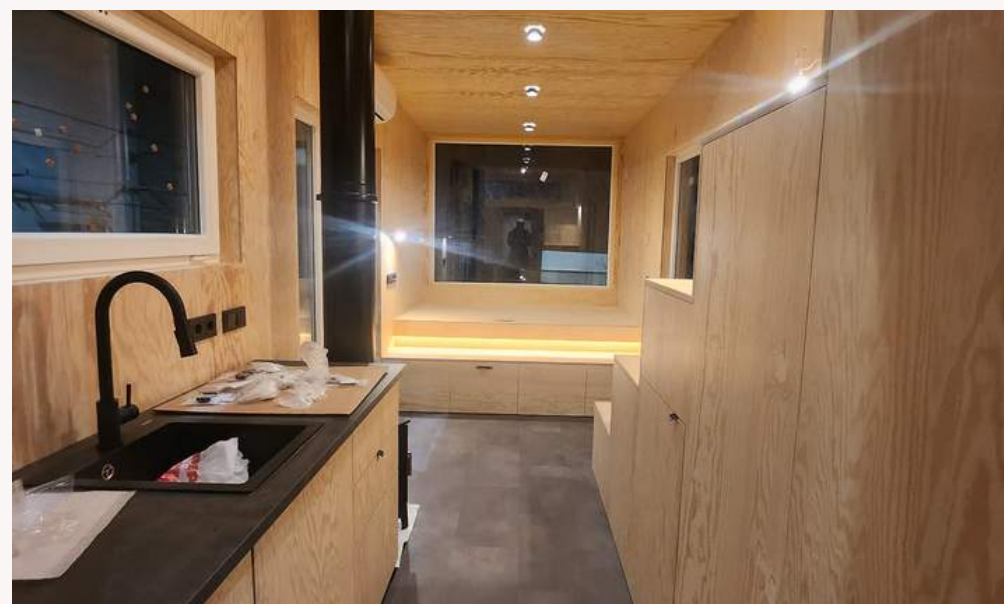
Vapour insulation film is used for energy savings, a better indoor microclimate, effective protection against vapour and moisture.

Exterior: steel sheets and/or thermowood, performs remarkably well even in the extreme and harsh climatic condition.

Interior paneling: wood paneling, plywood

Electric wiring and plumbing

Total weight: 3500 kg



TINY HOUSES

1SB

SINGLE FLOOR

SINGLE FLOOR

18 SQM
7.2 X 2.5 M

MOBILE OR FIXED

3GO

LOFT
OFF-GRID

LOFT OFF-GRID

22 SQM

7.2 X 2.5 M + LOFT
MOBILE OR FIXED

2LS

LOFT
STANDARD

LOFT STANDARD

22 SQM

7.2 X 2.5 M + LOFT
MOBILE OR FIXED

4by10

CUSTOM-BUILT

CUSTOM-BUILT

18-45 SQM
MOBILE OR FIXED

2LM

SINGLE
MAXI

SINGLE MAXI

24 SQM

7.2 X 2.9 M
FIXED

20SQ

SINGLE

20 SQM

7.8 X 2.5 M
MOBILE OR FIXED

1SB

SINGLE FLOOR





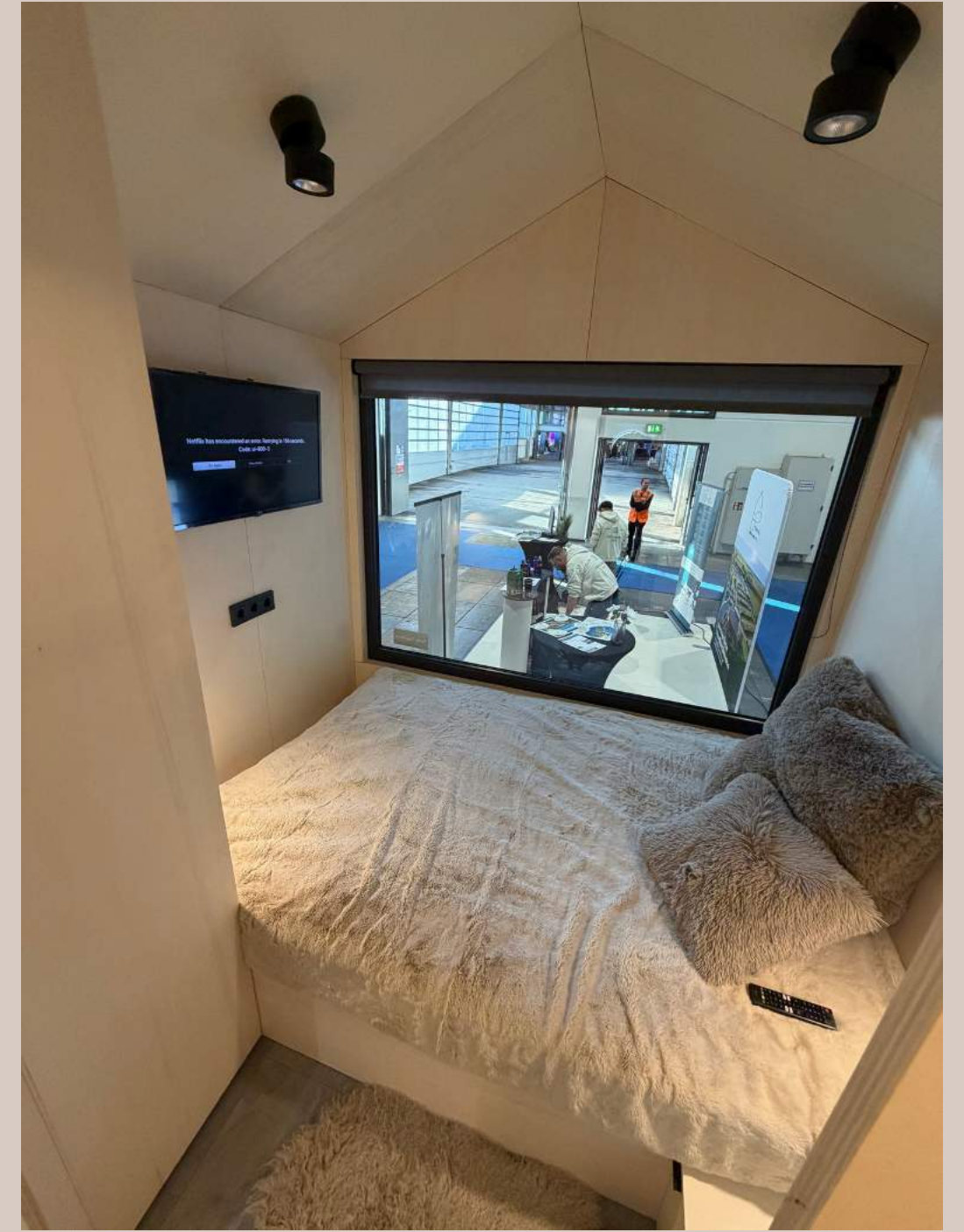
1SB – SINGLE FLOOR



1SB – SINGLE FLOOR (STANDARD)



1SB – SINGLE FLOOR (PREMIUM)



1SB – SINGLE FLOOR (PREMIUM)



STANDARD PACKAGE LIST

DIMENSIONS & WEIGHT:

- LENGTH: 7,2 M
- WIDTH: 2,55 M
- HEIGHT: <4 M
- WEIGHT: 3500 KG

EXTERIOR:

- WOOD PANELING/THERMOWOOD
- WELL INSULATED 2-PANE WINDOWS AND DOOR
- LIGHTWEIGHT AND DURABLE ALUMINUM ROOF
- WINTER INSULATED WITH MINERAL WOOL

INTERIOR

- 18 SQM – FIRST FLOOR
- 4 SQM – LOFT
- ROOM HEIGHT <3 M
- WOOD PANELING
- LAMINATE FLOORING
- LADDERS

KITCHENETTE:

- CABINETS
- STOVE
- SINK AND TAP

BATHROOM:

- 2.5 SQ.M. BATHROOM AREA
- VINYL WALLS
- LAMINATE FLOORING
- SHOWER CABIN
- STONE MASS SHOWER PAD
- FLUSH TOILET
- WASHING BASIN AND CUPBOARD
- WATER HEATER
- MIRROR

- ELECTRIC WIRING
- PLUMBING
- VENTILATION

1SB (PREMIUM)

TECHNICAL SPECIFICATION:

Length: 7,2 m
Width: 2,5 m
Height: <4 m
Weight: 3500 kg
Detachable platform

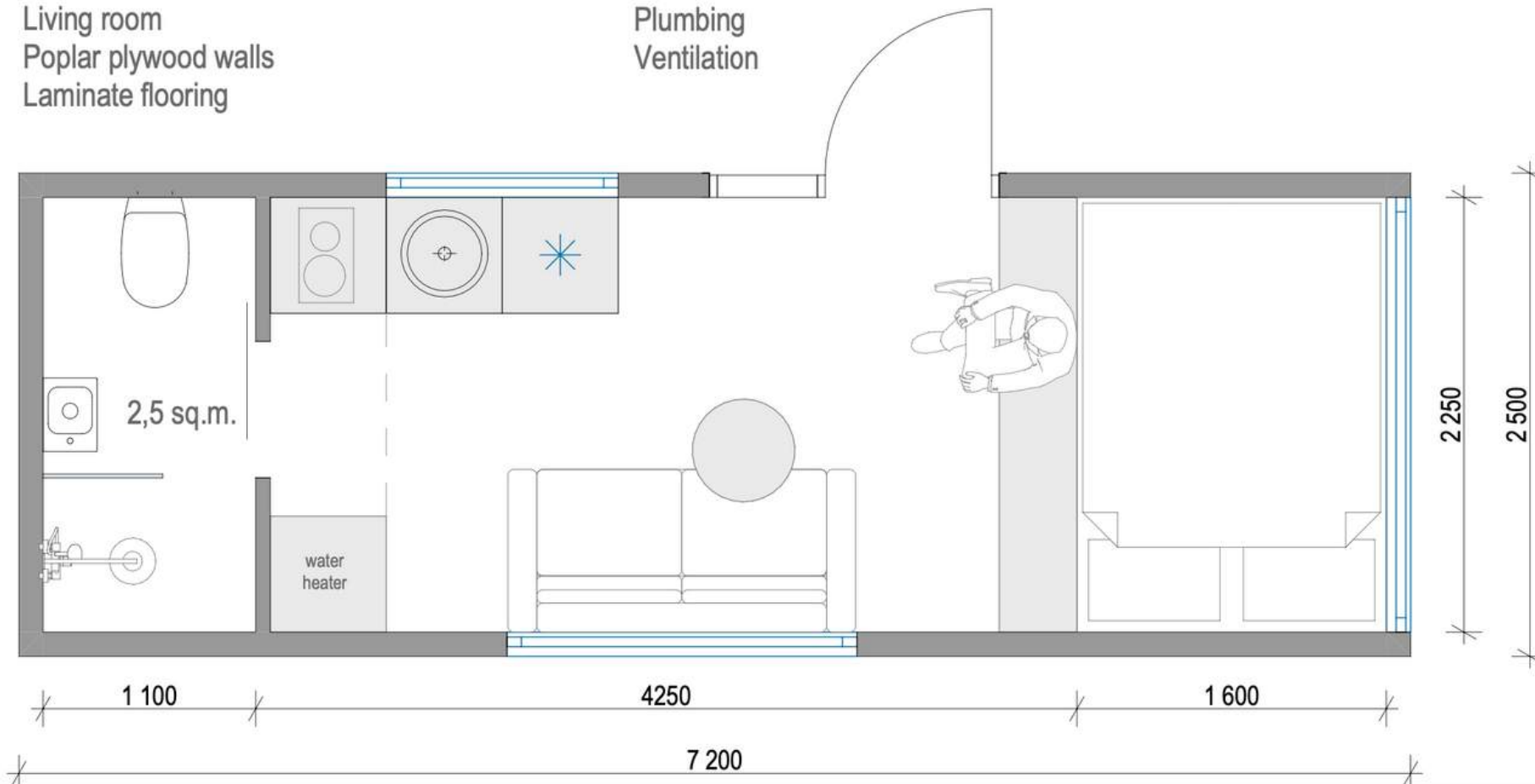
Exterior:
Burnt wood
Well insulated 2-pane windows and doors
Lightweight and durable aluminum roof
Winter insulated with eco-friendly Mineral wool
Floor insulation: PIR panels
Floor heating

Interior:
18 sq.m.
Bedroom, 160x200 cm
Living room
Poplar plywood walls
Laminate flooring

Kitchenette:
Cabinets
Stove
Sink and tap
Fridge

Bathroom:
2.5 sq.m. bathroom area
Shower cabin with vinyl walls
Stone mass shower pad
Flush Toilet
Wash basin
Water heater
Led mirror

Electric wiring
Hybrid inverter
Plumbing
Ventilation



**TINY HOUSE - SINGLE
FLOOR 18 sq.m.**



2LS

LOFT
STANDARD



EXTERIOR:

STEEL VENEER WITH THERMOWOOD



THERMOWOOD



BURNT WOOD

EXTERIOR:

- VLEMMIX TRAILER, LENGTH 8.7 M
- HOUSE SIZE: LENGTH. 7.2 M X 2.55 M
- WEIGHT: <3500 KG
- WOOD PANELING, THERMOWOOD OR STEEL SHEETS
- 2-PANE WINDOWS AND DOORS
- ALUMINIUM ROOF
- LIGHT GAUGE STEEL/TIMBER FRAME

LIGHT GAUGE STEEL FRAME



THERMOWOOD



PIR INSULATION PANELS





STANDARD PACKAGE LIST

DIMENSIONS & WEIGHT:

- LENGTH: 7,2 M
- WIDTH: 2,55 M
- HEIGHT: <4 M
- WEIGHT: 3500 KG

EXTERIOR:

- WOOD PANELING/THERMOWOOD
- WELL INSULATED 2-PANE WINDOWS AND DOOR
- LIGHTWEIGHT AND DURABLE ALUMINUM ROOF
- WINTER INSULATED WITH MINERAL WOOL

INTERIOR

- 18 SQM – FIRST FLOOR
- 4 SQM – LOFT
- ROOM HEIGHT <3 M
- WOOD PANELING
- LAMINATE FLOORING
- LADDERS

KITCHENETTE:

- CABINETS
- STOVE
- SINK AND TAP

BATHROOM:

- 2.5 SQ.M. BATHROOM AREA
- VINYL WALLS
- VINYL FLOORING
- SHOWER CABIN
- STONE MASS SHOWER PAD
- FLUSH TOILET
- WASHING BASIN AND CUPBOARD
- WATER HEATER
- MIRROR

- ELECTRIC WIRING
- PLUMBING
- VENTILATION

INTERIOR:





EXAMPLE OF INTERIOR – LOFT (WOOD PANELLING WITH STAIN, FLOORS: PLYWOOD, LADDERS,A/C)

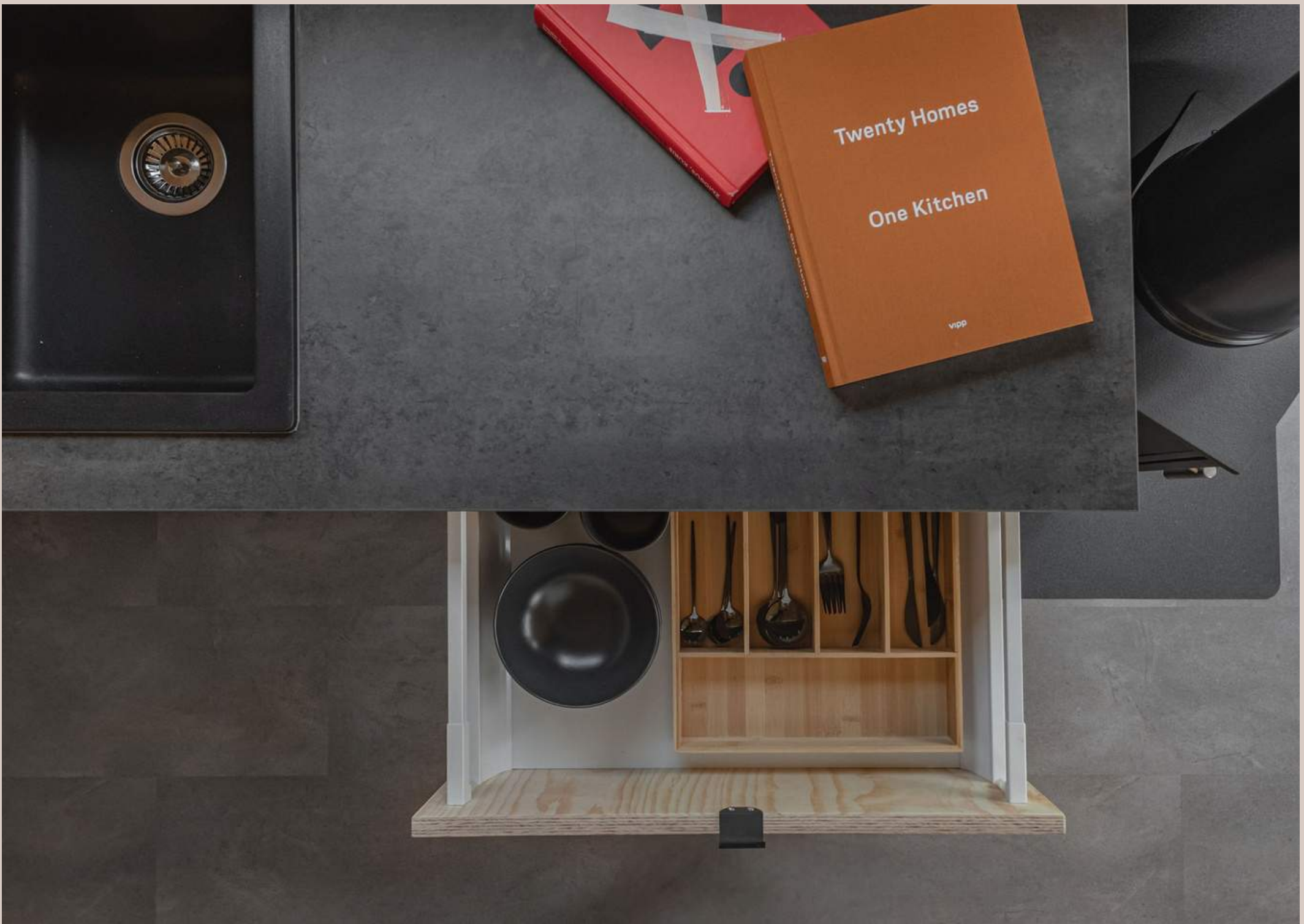


TINY HOUSE: LOFT (WOOD PANELLING WITH STAIN, FLOORS: PLYWOOD, LADDERS, A/C)



EXAMPLE OF INTERIOR – LOFT (THERMOWOOD, PLYWOOD, STAIRS, DRY TOILET, A/C, FRIDGE, STORAGE BOXES)





EXAMPLE OF INTERIOR – LOFT AREA (MATTRESS 160 X 200 CM)





EXAMPLE OF INTERIOR – FLOORS: VINYL, A/C, WOOD STOVE, INSULATED CHIMNEY, STORAGE UNDER THE BED





EXTERIOR: THERMOWOOD



EXTERIOR: BURNT WOOD



2LM

MAXI



Baltic Tiny House

TECHNICAL SPECIFICATION:

Length: 8,4 m
Width: 2,9 m
Height: <4 m
Weight: 3500 kg

Exterior:
Thermowood
Well insulated 2-pane windows and doors
Lightweight and durable aluminum roof
Winter insulated with eco-friendly Mineral wool
Floor insulation: PIR panels
Floor heating

Interior:
24 sq.m.
Bedroom, 160x200 cm
Living room
Poplar plywood walls
Laminate flooring

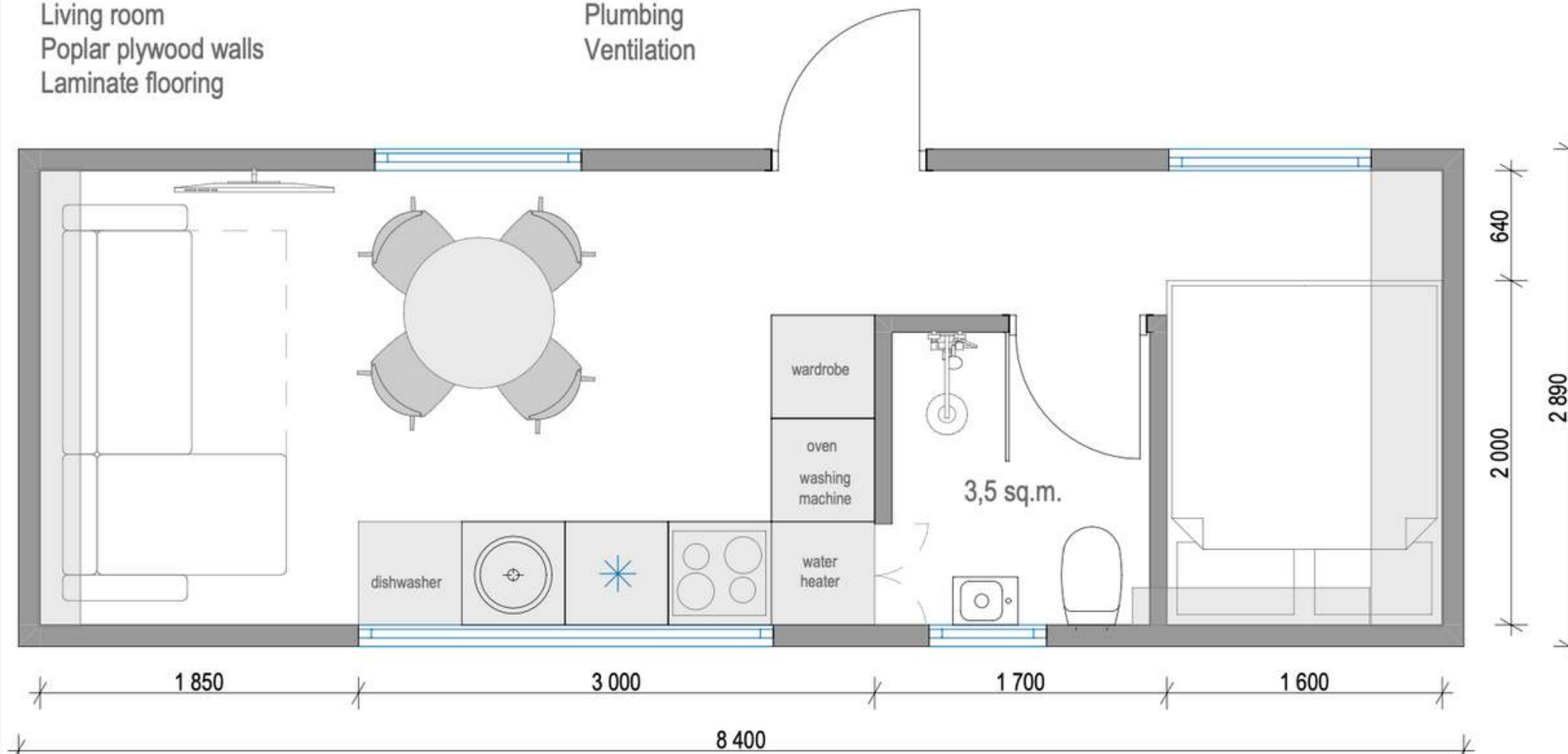
Kitchenette:
Cabinets
Stove
Sink and tap
Fridge

Bathroom:
2.5 sq.m. bathroom area
Shower cabin with vinyl walls
Stone mass shower pad
Flush Toilet
Wash basin
Water heater
Led mirror

Electric wiring
Plumbing
Ventilation



TINY HOUSE - MAXI 24 sq.m.



3GO

OFF-GRID



3GO

OFF-GRID SET UP:

- X4 SOLAR PANELS
- X2 LIFEPO4 BATTERIES
- 3 KW HYBRID INVERTER
- DRY TOILET
- WOOD STOVE



4by10



4by10

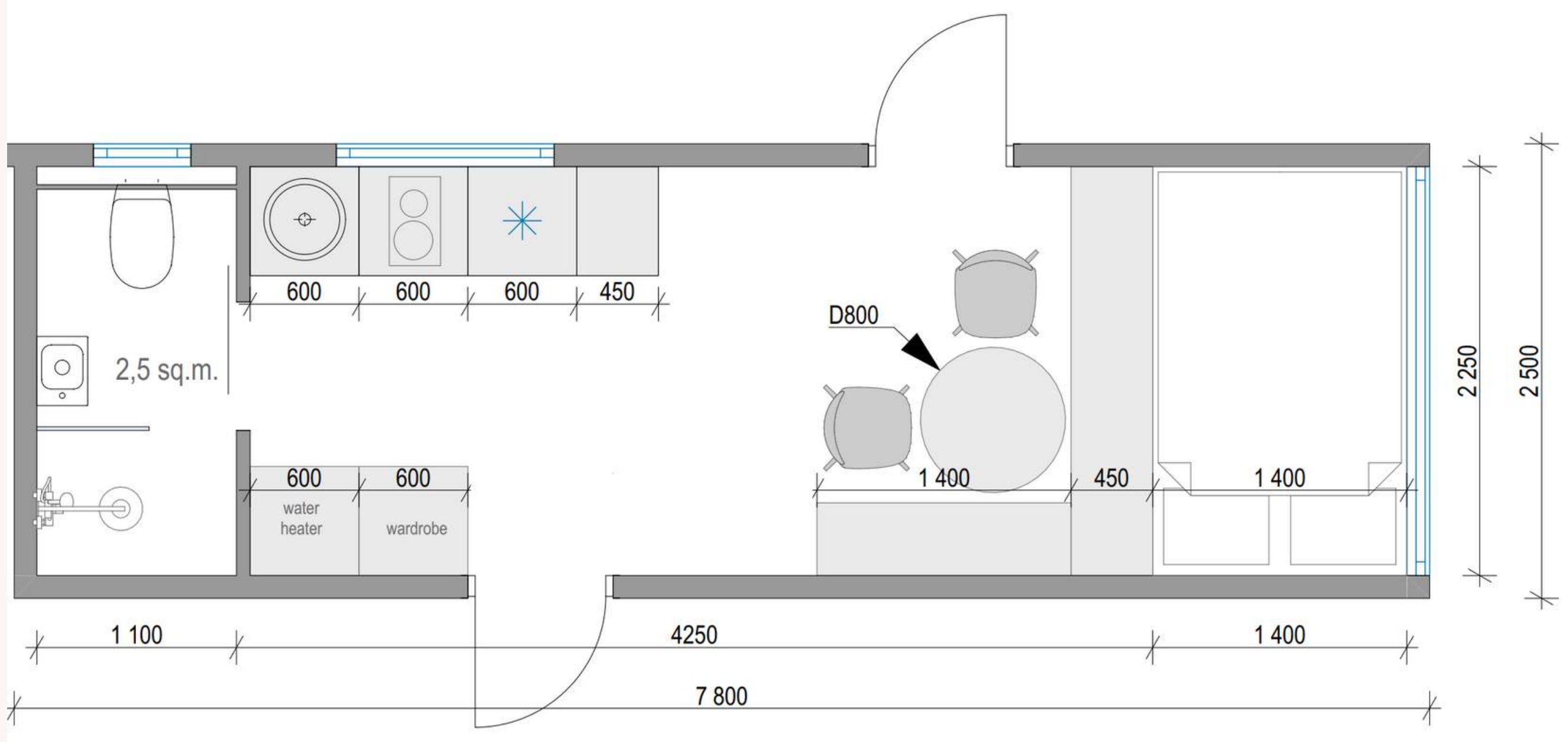


CUSTOM-BUILT OPTIONS:

- HOW MANY SQ.M.?
- SEMI-FINISHED / FINISHED
- DELIVERY WITH LOW-GROUND TRUCK
- EXTERIOR:
THERMOWOOD/BURNTWOOD
- INTERIOR:
WOOD PANELLING/PLYWOOD
- FLOORING:
VINYL/LAMINATE/WOOD
- WINDOWS
- FURNITURE

TOTAL: 40-45 SQ.M.

20SQ



20SQ



7.8 X 2.5 M

- SINGLE FLOOR
- THERMOWOOD
- WOOD PANELLING / PLYWOOD
- 2 PANE WINDOWS
- KITCHENETTE
- BATHROOM
- DETACHABLE OR STANDARD TRAILER BY VLEMMIX
- WEIGHT: 3500 KG
- HEIGHT: 3.5 M





DOOR-TO-DOOR DELIVERY



4x4



Mini van

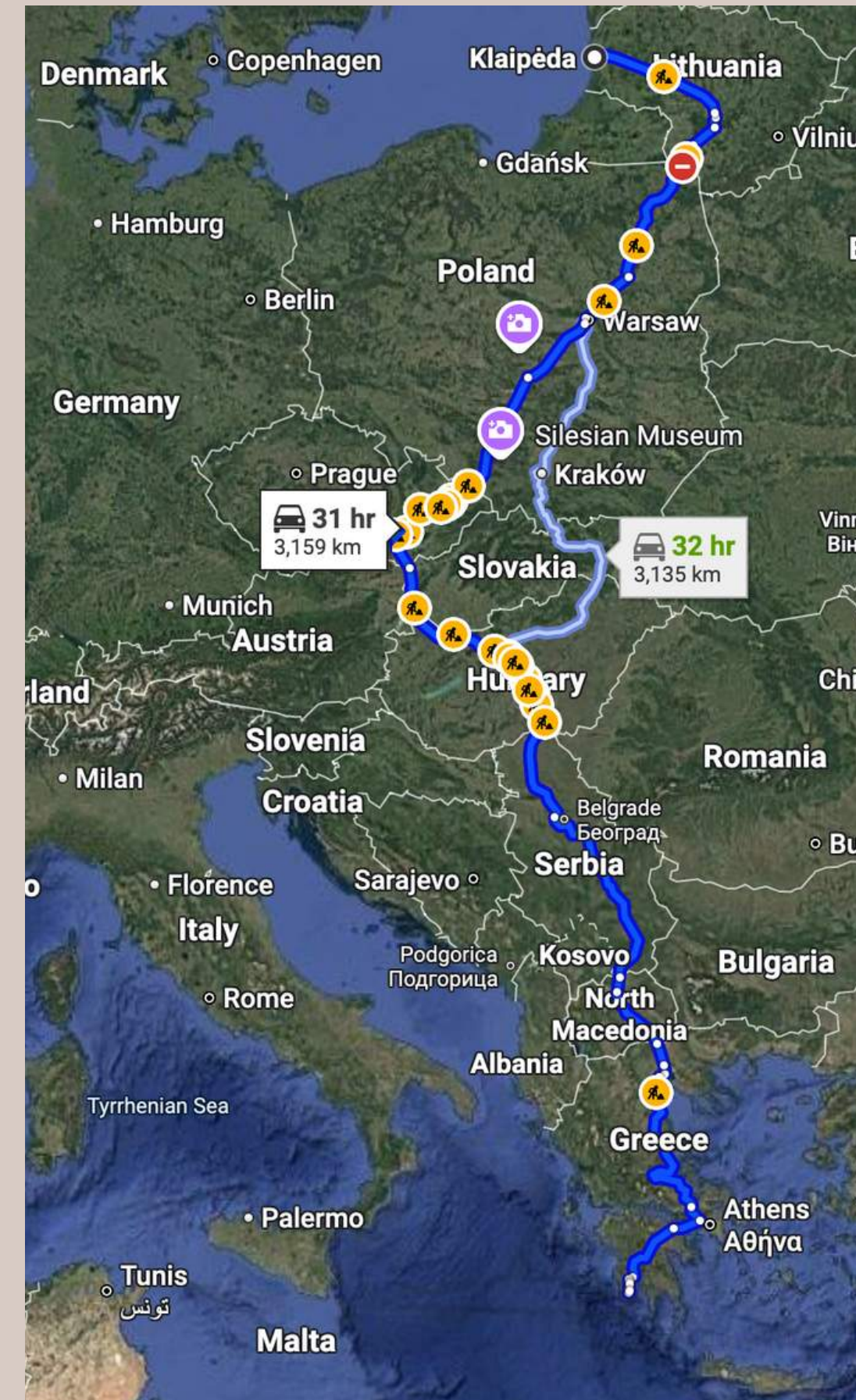


Low ground truck

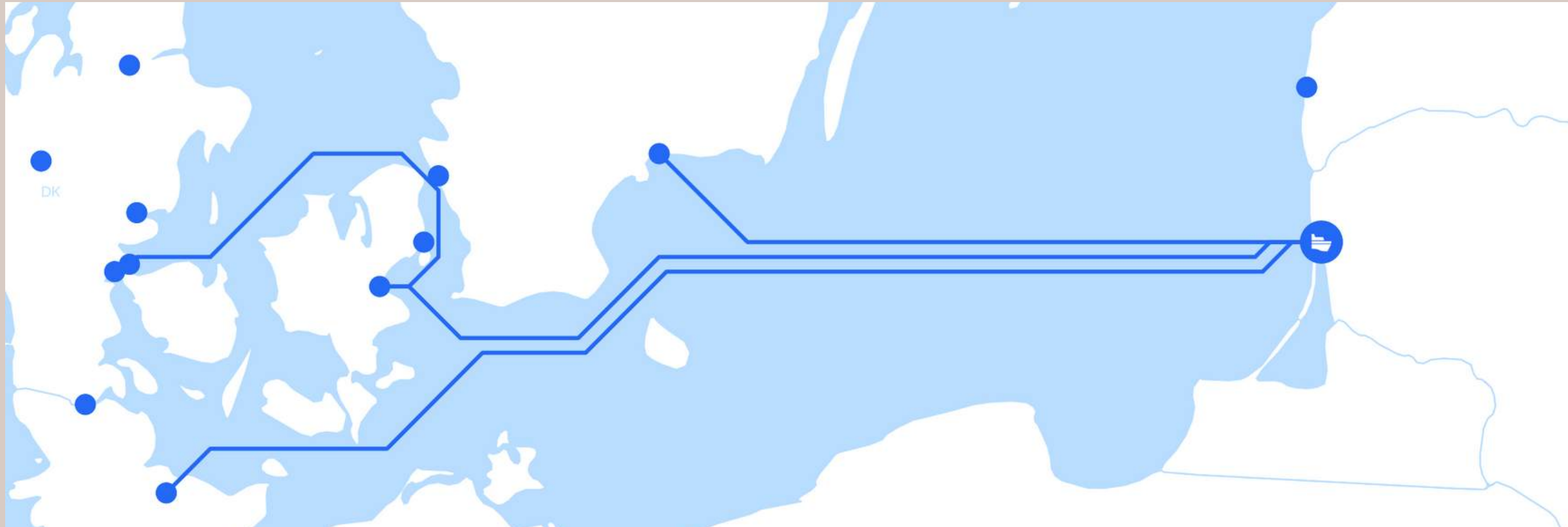
and by ferry..

DOOR-TO-DOOR DELIVERY

Loaded in Lithuania, unloaded in Greece



OUR FERRY NETWORK



Klaipeda - Fredericia, DENMARK

Klaipeda - Karlshamn, SWEDEN

Klaipeda - Kiel, GERMANY

Klaipeda - Køge, DENMARK



READY TO EMBARK ON YOUR TINY HOME ADVENTURE?



hello@baltictinyhouse.com

distributors@baltictinyhouse.com

www.baltictinyhouse.com

Germany, Berlin: +49 177 595 2167

Sweden, Stockholm: +46 73 663 03 62

Lithuania, Vilnius: +370 610 62888