

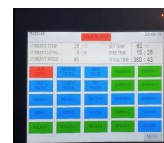
## FABTECH WASHER CUM EXTRACTOR



**40 TO 55 %**  
**LESS WATER**  
**ELECTRICITY**  
**CHEMICALS**

### Advanced Resource Efficiency

This industrial washer extractor cuts water, electricity, and chemical use by 40–50%, offering major cost savings with top cleaning performance.



### Micro Computer

7" Touch Fully customizable with up to 99 programs, modifiable presets, automation for water level, temperature, RPM, and errors. IoT-enabled (optional) and easy to use.



### Simple Efficient Inverter Drive

Single motor inverter drive delivers all required speeds for washing, distribution, low, normal and high spin cycles. Eliminates troublesome multispeed motors, clutches and brakes. The energy-efficient drive reduces electric peak load demands.



### Five Compartment Dispenser Drive

Five different chemicals can be placed in plastic containers in powder, liquid or gel form. Powerful jets completely flush out the chemicals as and when signaled by the computer. Optional : Liquid chemical supply connections for automatic Dosing Pumps

Parameter/Models	FWX30	FWX60	FWX120	FWX120T Forward TXT
Capacity	30 KG	60 KG	120 KG	120 KG
Basket Size Volume	900 dia x 500 mm / 318 LTS	1100 dia x 650 mm / 617 LTS	1350 x 850 / 1216 LTS	1350 x 850 / 1216 LTS
Drive Motor	5 KW	10 KW	18.5 KW	18.5 KW + T&T Motor 1.5 KW
Drive Type	Variable Frequency Direct Drive	Variable Frequency Direct Drive	Variable Frequency Direct Drive	Variable Frequency Direct Drive
Steam Connection	AXS 30 (15, 0.5" BSP)	AXS 60 (15, 0.5" BSP)	AXS 120 (1", BSP)	AXS 120 (15, 0.5" BSP)
Electric Heating	AXE 30 (18 KW)	AXE 60 (36 KW)	—	—
Dimensions (WxDxH)	1350 x 1450 x 1725 mm	1600 x 1750 x 2025 mm	1950 x 2050 x 2300 mm	1950 x 2050 x 2300 mm