



Maria Riding Company®

---

JAN 2024 Collection

Maria  
Riding  
Company

T-Shirts



FLICK KNIFE BLACK MEN T-SHIRT

Color Ref: Black

This 170gr. t-shirt it's made from 100% cotton, with a special finish, to make it smooth and soft to the touch. Amazing comfort. Regular fit. Sizes from S to XXL.

ROLLIN BLUE MEN T-SHIRT

Color Ref: Blue

This 170gr. t-shirt it's made from 100% cotton, with a special finish, to make it smooth and soft to the touch. Amazing comfort. Regular fit. Sizes from S to XXL.

## Mens T-Shirts

All these t-shirts are manufactured using the best cotton fabrics to produce a high quality piece. They all pass through a special process during the production, to give the cotton a ultra smooth touch for great comfort. All proudly made in Portugal.





SPARK FADED RED MEN T-SHIRT

Color Ref: Faded Red

This 170gr. t-shirt it's made from 100% cotton, with a special finish, to make it smooth and soft to the touch. Amazing comfort. Regular fit. Sizes from S to XXL.



SPARK BLACK MEN T-SHIRT

Color Ref: Black

This 170gr. t-shirt it's made from 100% cotton, with a special finish, to make it smooth and soft to the touch. Amazing comfort. Regular fit. Sizes from S to XXL.





#### FLYING TIGER MEN T-SHIRT

Color Ref: White

.....  
This 170gr. t-shirt it's made from 100% cotton, with a special finish, to make it smooth and soft to the touch. Amazing comfort. Regular fit. Sizes from S to XXL.



#### NINE MEN T-SHIRT

Color Ref: Faded Red

.....  
This 170gr. t-shirt it's made from 100% cotton, with a special finish, to make it smooth and soft to the touch. Amazing comfort. Regular fit. Sizes from S to XXL.



PARALLEL TWIN MEN T-SHIRT

Color Ref: Blue

This 170gr. t-shirt it's made from 100% cotton, with a special finish, to make it smooth and soft to the touch. Amazing comfort. Regular fit. Sizes from S to XXL.



PARALLEL TWIN MEN T-SHIRT

Color Ref: White

This 170gr. t-shirt it's made from 100% cotton, with a special finish, to make it smooth and soft to the touch. Amazing comfort. Regular fit. Sizes from S to XXL.





OLD PANTHER MEN T-SHIRT

Color Ref: Black

This 170gr. t-shirt it's made from 100% cotton, with a special finish, to make it smooth and soft to the touch. Amazing comfort. Regular fit. Sizes from S to XXL.



SLAYER MEN T-SHIRT

Color Ref: White

This 170gr. t-shirt it's made from 100% cotton, with a special finish, to make it smooth and soft to the touch. Amazing comfort. Regular fit. Sizes from S to XXL.



RACE TRACK ESTORIL MEN T-SHIRT - Special Edition      Color Ref: Dark Grey

This 170gr. t-shirt it's made from 100% cotton, with a special finish, to make it smooth and soft to the touch. Amazing comfort. Regular fit.  
This is a Limited Edition.  
Sizes from S to XXL.

LOW STOCK

RACE TRACK ESTORIL MEN T-SHIRT - Special Edition      Color Ref: White

This 170gr. t-shirt it's made from 100% cotton, with a special finish, to make it smooth and soft to the touch. Amazing comfort. Regular fit.  
This is a Limited Edition.  
Sizes from S to XXL.







LOW STOCK



HANDCRAFTED MEN T-SHIRT    Color Ref: Dark Grey/Olive/White

This 170gr. t-shirt it's made from 100% cotton, with a special finish, to make it smooth and soft to the touch. Amazing comfort. Regular fit. Sizes from S to XXL.





S - OUT OF STOCK



HOLLYWOOD MEN T-SHIRT Color Ref: Yellow

This 170gr. t-shirt it's made from 100% cotton, with a special finish, to make it smooth and soft to the touch. Amazing comfort. Regular fit. Sizes from S to XXL.

LONE SURFER MEN T-SHIRT Color Ref: Olive

This 170gr. t-shirt it's made from 100% cotton, with a special finish, to make it smooth and soft to the touch. Amazing comfort. Regular fit. Sizes from S to XXL.

OLD SCRAMBLER MEN T-SHIRT Color Ref: White

This 170gr. t-shirt it's made from 100% cotton, with a special finish, to make it smooth and soft to the touch. Amazing comfort. Regular fit. Sizes from S to XXL.





SAVE THE EARTH MEN T-SHIRT Color Ref: Olive

This 170gr. t-shirt it's made from 100% cotton, with a special finish, to make it smooth and soft to the touch. Amazing comfort. Regular fit. Sizes from S to XXL.

MAD TIGER MEN T-SHIRT Color Ref: Yellow

This 170gr. t-shirt it's made from 100% cotton, with a special finish, to make it smooth and soft to the touch. Amazing comfort. Regular fit. Sizes from S to XXL.

POWER STOKED MEN T-SHIRT Color Ref: Olive

This 170gr. t-shirt it's made from 100% cotton, with a special finish, to make it smooth and soft to the touch. Amazing comfort. Regular fit. Sizes from S to XXL.



TWIN FIN T-SHIRT

Ref: White

This 170gr. t-shirt it's made from 100% cotton, with a special finish, to make it smooth and soft to the touch. Amazing comfort. Regular fit. Sizes from S to XXL.



LUCKY CAT T-SHIRT

Ref: Grey

This 170gr. t-shirt it's made from 100% cotton, with a special finish, to make it smooth and soft to the touch. Amazing comfort. Regular fit. Sizes from S to XXL.



MARIA BANDANA T-SHIRT

Ref: Grey

This 170gr. t-shirt it's made from 100% cotton, with a special finish, to make it smooth and soft to the touch. Amazing comfort. Regular fit. Sizes from S to XXL.



Maria  
Riding  
Company

Maria Riding Jersey's



## Riding Jersey's

Maria jersey long-sleeved shirts were designed to keep you comfortable, fresh and dry while riding your motorcycle. Either scrambling on dirt or gliding in the asphalt, this jerseys will make you feel light, free, and dressed up for the occasion. With a hint from old time races the "Dirty Jerseys" collection possess the bold and distinctive style that characterizes Maria. Made in Portugal to ride everywhere.







TIGRE JERSEY Ref: White/Black/Yellow

This lightweight jersey it's made from a breathable 100% polyester fabric. Comfortable and soft, with a quick-dry/dry-touch feeling. The cut is loose to fit your protections beneath. Fade-resistant sublimated graphics. Available from S to XXL. Made in Portugal.



SUNBOW JERSEY Ref: White/Black/Blue

.....  
 This lightweight jersey it's made from a breathable 100% polyester fabric.  
 Comfortable and soft, with a quick-dry/dry-touch feeling.  
 The cut is loose to fit your protections beneath.  
 Fade-resistant sublimated graphics.  
 Available from S to XXL.  
 Made in Portugal.





FURY JERSEY

Color Ref: Black/Dark Magenta

This lightweight jersey it's made from a breathable 100% polyester fabric. Comfortable and soft, with a quick-dry/dry-touch feeling.  
The cut is loose to fit your protections beneath.  
Fade-resistant sublimated graphics.



ODYSSEY JERSEY

Color Ref: Green/Black

This lightweight jersey it's made from a breathable 100% polyester fabric. Comfortable and soft, with a quick-dry/dry-touch feeling.  
The cut is loose to fit your protections beneath.  
Fade-resistant sublimated graphics.  
Available from S to XXL.  
Made in Portugal.



OUTLAW JERSEY

Ref: Black/White/Red

This lightweight jersey it's made from a breathable 100% polyester fabric. Comfortable and soft, with a quick-dry/dry-touch feeling.  
The cut is loose to fit your protections beneath.  
Fade-resistant sublimated graphics.  
Available from S to XXL.  
Made in Portugal.



ELETRICA JERSEY

Ref: Petrol Blue/White/Yellow

This lightweight jersey it's made from a breathable 100% polyester fabric. Comfortable and soft, with a quick-dry/dry-touch feeling.  
The cut is loose to fit your protections beneath.  
Fade-resistant sublimated graphics.  
Available from S to XXL.  
Made in Portugal.



WILD CAT JERSEY

Ref: Black/White

This lightweight jersey it's made from a breathable 100% polyester fabric. Comfortable and soft, with a quick-dry/dry-touch feeling.  
The cut is loose to fit your protections beneath.  
Fade-resistant sublimated graphics.  
Available from S to XXL.  
Made in Portugal.



ALMOST OUT OF STOCK

NEW BUNCH IN PRODUCTION





SUPER RIDER JERSEY Ref: Red/Blue/White

This lightweight jersey it's made from a breathable 100% polyester fabric. Comfortable and soft, with a quick-dry/dry-touch feeling.  
The cut is loose to fit your protections beneath.  
Fade-resistant sublimated graphics.  
Available from S to XXL.  
Made in Portugal.



ANY SUNDAY JERSEY Ref: Red/Blue

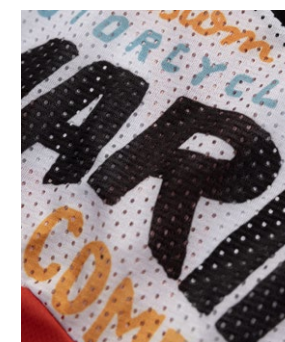
This lightweight jersey it's made from a breathable 100% polyester fabric. Comfortable and soft, with a quick-dry/dry-touch feeling.  
The cut is loose to fit your protections beneath.  
Fade-resistant sublimated graphics.  
Available from S to XXL.  
Made in Portugal.



# TROPHY JERSEY - Hero

The new "Dirty Jerseys" collection are now even more comfortable and more breathable with the same distinctive style that characterizes Maria. Now with cotton ribs more adjusted to the rider needs. Made in Portugal to ride everywhere.

NEW



TROPHY JERSEY - HERO Ref: Red/Black

This lightweight jersey it's made from a breathable 100% polyester fabric. Comfortable and soft, with a quick-dry/dry-touch feeling.  
The cut is loose to fit your protections beneath.  
Fade-resistant sublimated graphics.  
Available from S to XXL.  
Made in Portugal.



Maria  
Riding  
Company

Sweatshirts



## Drifter Sweatshirts

Discover summer bliss with our exquisite Portuguese-made sweatshirt. This high-quality, ultra-smooth garment is a testament to craftsmanship, offering supreme comfort in a lightweight design. Versatile and stylish, it's the perfect addition to elevate your wardrobe.





FRIFTER SWEATSHIRT Color Ref: White/Faded Yellow

This 220gr. sweatshirt it's made from 100% cotton, with a special finish, to make it smooth and soft to the touch. Amazing comfort. Regular fit. Sizes from S to XXL.



FRIFTER SWEATSHIRT Color Ref: White/Mint

This 220gr. sweatshirt it's made from 100% cotton, with a special finish, to make it smooth and soft to the touch. Amazing comfort. Regular fit. Sizes from S to XXL.



# Men Long Sleeve - Black

New long sleeve sweatshirt, made with in Portugal, with 100% cotton.



BLACK LONG SLEEVE SWEATSHIRT Ref: Black

Lone Surfer long sleeve men shirt is light and soft. Made from the best materials, and processed to be very smooth to the touch.  
Made with 100% cotton, Regular Fit.  
Made in Portugal. Sizes S to XXL.



# Men Long Sleeve - White

New long sleeve sweatshirt, made with in Portugal, with 100% cotton.



WHITE LONG SLEEVE SWEATSHIRT Ref: White

.....  
This long sleeve men shirt is light and soft. Made from the best materials, and processed to be very smooth to the touch.  
Made with 100% cotton. Regular Fit.  
Made in Portugal. Sizes S to XXL.

# SPADES White Sweatshirt

"Spades" is our best seller winter sweater. Now with new colours!

With a bold look and comfy feel, this heavyweight sweatshirt makes for a good layering piece for the cold season rides. It was designed for a more tailored look and has a soft and warm touch.

Heavy weight 100% natural cotton sweatshirt with a nice and smooth texture.

All of our clothing is produced, cut and sewn in Portugal. Regular fit.

NEW STOCK SOON



WHITE SPADES MEN WINTER SWEATSHIRT Ref: White

Spades men winter sweatshirt is thick and soft, prepared to ride on the cold days. Made from the best materials, and processed to be very smooth to the touch.  
100% CO. Regular Fit.  
Made in Portugal



# SPADES Yellow Sweatshirt

NEW



WHITE SPADES MEN WINTER SWEATSHIRT Ref: Yellow

Spades men winter sweatshirt is thick and soft, prepared to ride on the cold days. Made from the best materials, and processed to be very smooth to the touch. 100% CO. Regular Fit. Made in Portugal

# SPADES Dark Red Sweatshirt

NEW



WHITE SPADES MEN WINTER SWEATSHIRT Ref: Dark Red  
Spades men winter sweatshirt is thick and soft, prepared to ride on the cold days. Made from the best materials, and processed to be very smooth to the touch.  
100% CO. Regular Fit.  
Made in Portugal



# SPADES Petrol Blue Sweatshirt

NEW



WHITE SPADES MEN WINTER SWEATSHIRT Ref: Petrol Blue

Spades men winter sweatshirt is thick and soft, prepared to ride on the cold days. Made from the best materials, and processed to be very smooth to the touch.  
100% CO. Regular Fit.  
Made in Portugal

# University of Velocity - Hoodie

New garment just arrived.

A new approach to the classic hoodie . Comfortable and smooth, this heavyweight hoodie makes for a good layering piece for the cold season rides.

Hand pockets inspired on the boxer hoodies of the 50's.

Heavy weight 100% natural cotton sweatshirt.

All of our clothing is produced, cut and sewn in Portugal. Regular fit.



UNIVERSITY OF VELOCITY - HOODIE

Ref: GREY

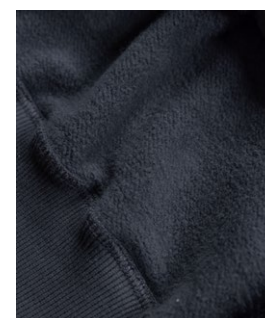
Winter Hoodie sweatshirt is thick and soft, prepared to ride on the cold days. Made from the best materials, and processed to be very smooth to the touch.  
100% CO. Regular Fit.  
Made in Portugal

NEW



# Desert Dwellers - Hoodie

NEW



DESERT DWELLERS - HOODIE

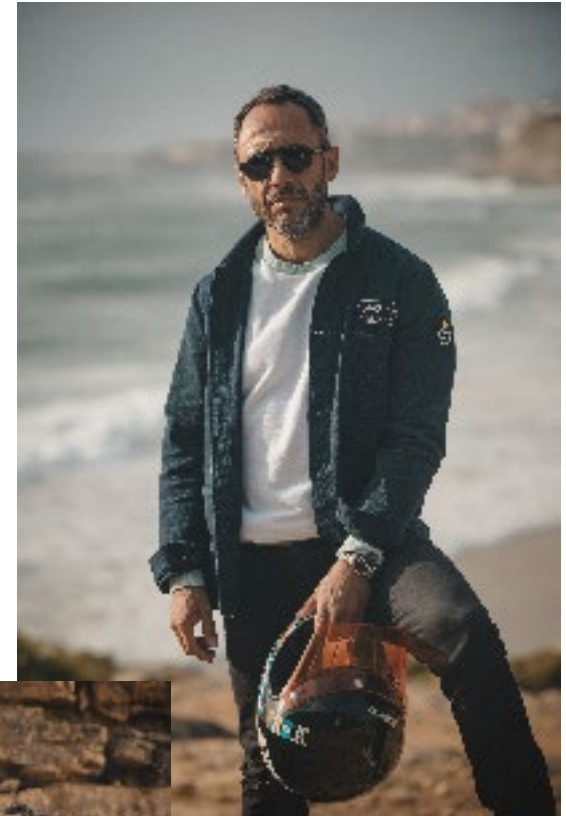
Ref: DARK GREY

Winter Hoodie sweatshirt is thick and soft, prepared to ride on the cold days. Made from the best materials, and processed to be very smooth to the touch.  
100% CO. Regular Fit.  
Made in Portugal

Maria  
Riding  
Company

Jackets





## WORKJACKET

The Maria Riding Company work jacket, hailing from Portugal, combines traditional craftsmanship with contemporary design. Made with high-quality materials, it offers durability, comfort, and a sleek, rugged appearance.

With unique accents and thoughtful embellishments, this work jacket effortlessly adds style to any outfit.

Perfect for both urban environments and outdoor adventures, it embodies the spirit of adventure while providing an authentic and exceptional quality.



NEW!



MARIA WORKJACKET

Ref: White

The Maria Workjacket it's made from high quality materials, and it's crafted special care and attention. Canvas made with 100% cotton. Regular Fit. Made in Portugal. Sizes S to XXL.





NEW!



MARIA WORKJACKET

Ref: Blue

The Maria Workjacket it's made from high quality materials, and it's crafted special care and attention. Canvas made with 100% cotton. Regular Fit. Made in Portugal. Sizes S to XXL.



Maria  
Riding  
Company

Women



# Women T-Shirts



FLYING PANTHER WOMEN T-SHIRT - Special Edition    Color Ref: White

.....  
This 170gr. t-shirt it's made from 100% cotton, with a special finish, to make it smooth and soft to the touch. Amazing comfort. Short and loose fit.  
Sizes XS to XL.



36 WINGS WOMEN T-SHIRT - Special Edition    Color Ref: White

.....  
This 170gr. t-shirt it's made from 100% cotton, with a special finish, to make it smooth and soft to the touch. Amazing comfort. Short and loose fit. Sizes XS to XL.



# Women Sweatshirts

BRAVA WOMEN SWEATSHIRT      Color Ref: Blue  
.....  
Made from the best materials, this piece of clothing has a fine and smooth touch. Made from 70% cotton and 70% Polyester. Short and loose Fit. Made in Portugal. Sizes XS to XL.



BRAVA WOMEN SWEATSHIRT      Color Ref: White  
.....  
Made from the best materials, this piece of clothing has a fine and smooth touch. Made from 70% cotton and 70% Polyester. Short and loose Fit. Made in Portugal. Sizes XS to XL.





Maria  
Riding  
Company

Caps



MARIA BLUE CAP      Ref: Blue / Black  
 .....  
 High quality trucker cap. Regular fit.

## TRUCKER CAPS

High quality cap with unique colors and specs.  
 All models include interior details and Maria tags.





MARIA CAP - FLYING PANTHER                      Ref: Blue / Kaki  
.....  
Hight quality trucker cap. Regular fit.





MARIA YELLOW CAP - SUNSET RACE EDITION / Yellow  
.....  
Hight quality trucker cap. Regular fit.





MARIA BLACK CAP                      Ref: Black  
.....  
Hight quality trucker cap. Regular fit.

Maria  
Riding  
Company

Socks



# SKATER SOCK Red Lightning

One size only - 39/46 Eur  
Made in Portugal



# SKATER SOCK Red Lightning

One size only - 39/46 Eur  
Made in Portugal





# SKATER SOCK Vintage Racer

One size only - 39/46 Eur  
Made in Portugal



# SKATER SOCK Black Tiger

One size only - 39/46 Eur  
Made in Portugal





# SKATER SOCK Skull & Dagger

One size only - 39/46 Eur  
Made in Portugal



Maria  
Riding  
Company

Accessories



STRIPE KEYRINGS  
Inspired on the “Remove Before Flight” aviation tags



STRIPE KEYRING BLUE/RED      Ref: KEYRING BLUERED  
Inspired on the "Remove Before Flight" aviation tags



STRIPE KEYRING ORANGE/BLUERef: KEYRING ORANGEBLUE  
Inspired on the "Remove Before Flight" aviation tags





# STICKER PACKS

Maria stickers with our original illustrations.



STICKER PACK RED      Ref: Sticker RED

.....

A pack with 7 stickers based on original Maria illustrations.



STICKER PACK BLUE      Ref: Sticker BLUE

.....

A pack with 8 stickers based on original Maria illustrations.





# PATCHE

It can be stitched or iron.



MARIA RED/BLUE PATCHE      Ref: PATCHE RED/BLUE  
.....  
7,5cm diameter



MARIA BLACK PATCHE      Ref: PATCHE BLACK  
.....  
6cm diameter

# PIN

Metallic high resolution pin



MARIA BRAND PIN

Ref: PIN #1

Metalic pin - Dimmensions: 30 x 6mm





Maria Riding Company®