

Engineering the future of solar farms

Ground-mounted structures designed for maximum efficiency, cost-effectiveness, and sustainability.

Heliofab

1. About Heliofab

Heliofab is an European startup revolutionizing solar farm construction through innovative modular ground-mounted structures. Combining cutting-edge designs with sustainable materials and efficient manufacturing, our solutions cater to EPC companies and solar developers seeking high-quality, cost-effective support systems for industrial solar panels.

Our collaboration with Sanprod ensures consistent quality and scalability for projects of any size, delivered faster than industry standards.

2. The Heliofab M30 – An Overview

Product Highlights:

The Heliofab M30 is a smart, modular ground-mounted system designed for industrial solar panels. Optimized for energy output and durability, it offers unique advantages:

- Tilt Angle: Fixed at 30°, ideal for optimal sun exposure in most European regions.
- Load Capacity: Accommodates up to 8.2 kWh per module (e.g., Risen RSM110-8-585BHDG panels).
- Component Efficiency: 15 primary structural parts and 71 total components, including bolts and nuts.

3. Key Features and Benefits

A. Lower Costs:

- Lightweight materials reduce shipping costs.
- Efficient designs cut down on raw material usage.

B. Faster Installation:

- Bolt-Only Assembly: No welding required, simplifying and accelerating the installation process.
- Pre-shipped with detailed guides for easy on-site setup.

C. Modular Versatility:

- Compatible with any industrial solar panel on the market.
- Easily adjustable to varying terrains, climates, and project requirements.

D. Performance Optimization:

- Leveling adjustments reduce the risk of shading and maximize energy output.

E. Sustainability:

- Manufactured from recyclable steel, contributing to environmental goals.

4. Technical Specifications

Specification	Details
Module Name	Heliofab M30
Tilt Angle	30° (Fixed)
Load Capacity	Up to 8.2 kWh per module
Material	S355J2, manufactured by Sanprod
Assembly Method	Bolts and nuts only, no welding required
Structural Parts	15 (71 total components with bolts and nuts)
Compatibility	Universal for all industrial solar panels
Features	Cable management channels, inverter mounting points
Weight	732 kg
Warranty	15 Years

5. Competitive Advantages

- Cost-Effective Solutions:** Reduce overall project budgets through material optimization and efficient production.
- Fast Delivery:** Produced and shipped on-demand, faster than industry standards.
- Ease of Use:** Quick-to-install structures save time and labor costs.
- Custom Fit:** Adaptable designs ensure no shadows and seamless integration with any solar panel.
- Environmentally Friendly:** Durable and recyclable materials support sustainability goals.

6. Applications

- Utility-scale solar farms in Europe.
- Projects on varied terrains requiring stable and adaptable support.
- EPC developers aiming to reduce costs without compromising on quality.

7. Certifications and Compliance

Heliofab products meet all required legal and customer-specific certifications in the European Union, ensuring reliability and safety for large-scale solar projects.

8. Looking to the Future

Heliofab is actively developing additional innovations, including:

- Angle-Adjustable Structures: To maximize energy output in diverse environmental conditions.
- Continued research and development to push the boundaries of cost, efficiency, and sustainability.

9. Contact Heliofab

Ready to Energize Your Solar Farm?

Our team is here to help you build smarter solar farms with innovative ground-mounted structures.

Website: heliofab.com

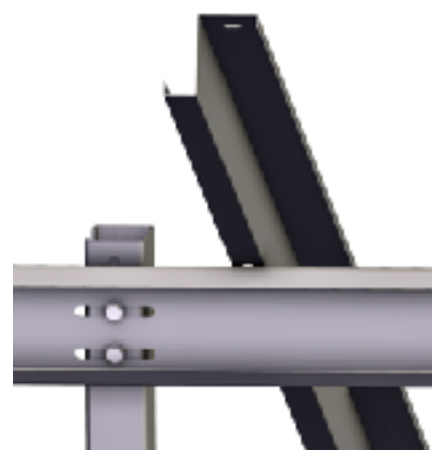
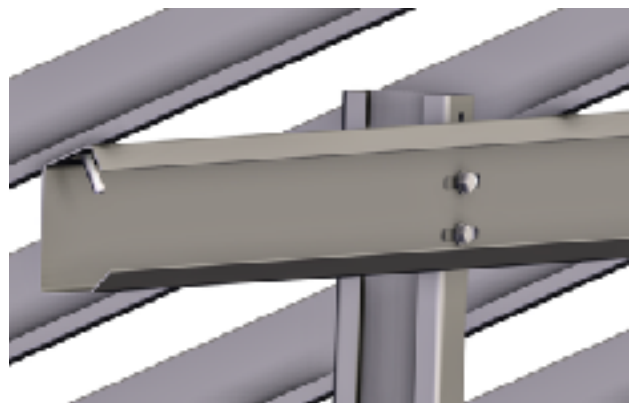
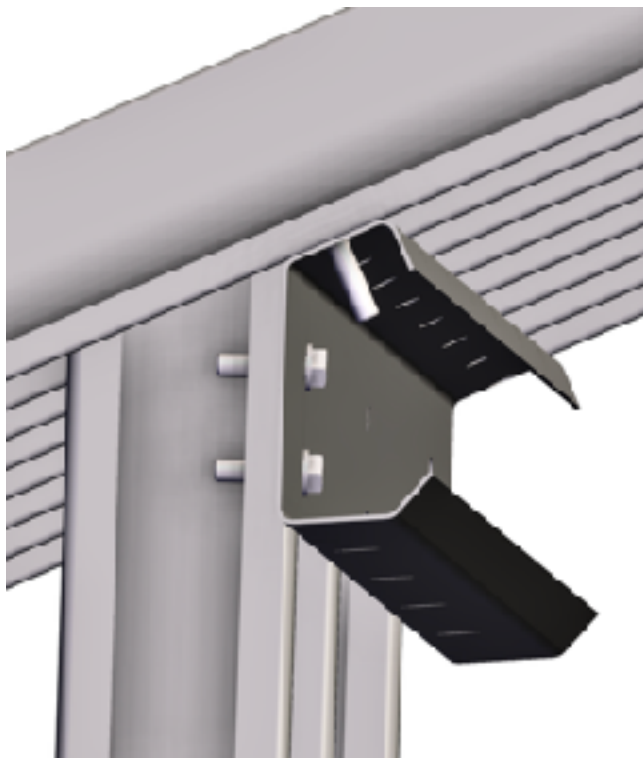
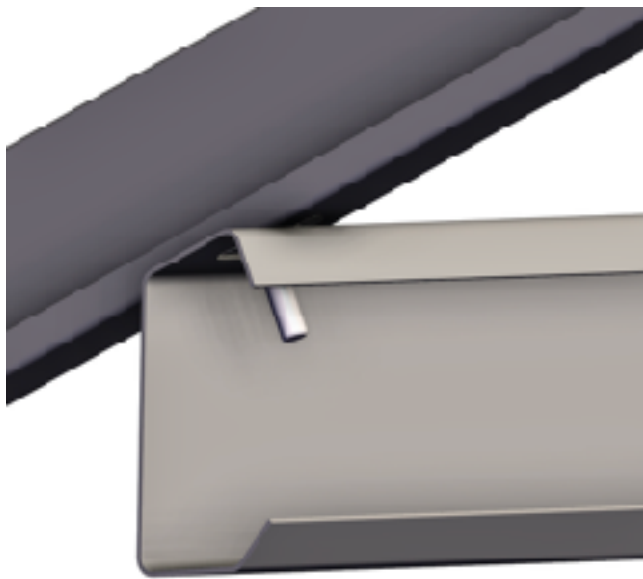
Email: contact@heliofab.com

Phone: +40741033038

Office Address: Bucharest, Romania

Connect with us today for quotes, technical inquiries, and customized solutions!

Heliofab



Heliofab

