

SOULFERYO

SAHL HASHEESH

SOULFERYO
DEVELOPMENTS

TIMELESS
EXPERIENCE



FOR THE
PREMIUM
FEW

SKY CHIC CONDO
E – CATALOGUE 2025

ELEGANCE OF DESIGN MEETS THE
TRANQUILLITY OF NATURE,
INVITING OWNERS AND VISITORS
TO ENJOY AN UNMATCHED
LIFESTYLE IN ONE OF THE MOST
BEAUTIFUL LOCATIONS IN THE
WORLD.

SOULFERYO

ADDRESS:

CG9 Old Town Sahl Hasheesh,
Hurghada, Red Sea, Egypt.

HOTLINE:

17362

DIRECT:

ENGLISH: +2 010 300 200 26

GERMAN: +2 010 300 200 51

RUSSIAN: +2 010 300 200 21

WEBSITE:

www.buildixrealestate.com

EMAIL:

info@buildixrealestate.com

SOULFERYO

PARTNERS OF SUCCESS

SOULFERYO
DEVELOPMENTS

SOULFERYO
DEVELOPER

RG
ROMA GROUP

SOULFERYO
OWNER

AZURE
PLANNING & ARCHITECTURE

PLANNING
& ARCHITECTURE

BUILDIX[®]
PROJECT MANAGEMENT

PROJECT
MANAGEMENT

BUILDIX[®]
ARCHITECTURE & INTERIOR DESIGN

ARCHITECTURE
& INTERIOR DESIGN

BUILDIX[®]
BRANDING & MARKETING

BRANDING
& MARKETING

BUILDIX[®]
REAL ESTATE INVESTMENT

REAL ESTATE
INVESTMENT

SOULFERYO



TIMELESS EXPERIENCE



**Soulferyo
Sahl Hasheesh**
CLICK HERE

JAMARAN
Pyramisa Beach
Sahl Hasheesh

Veranda Sahl
Hasheesh Resort

Baron Palace
Sahl Hasheesh

Tropitel Sahl Hasheesh

Sea Horse Sahl
Hasheesh Hurghada

Sunrise Royal
Makadi Resort

LOCATION
SAHL HASHEESH
HURGHADA
RED SEA
EGYPT

MAKADI BAY

**25**
minutes

to Hurghada
Downtown

**20**
minutes

to Hurghada
Airport

**15**
minutes

to Senzo
Mall

**5**
minutes

to Old Town
Sahl Hasheesh

FOR THE PREMIUM FEW

E – CATALOGUE

2025

SOULFERYO

PROJECT OVERVIEW

LAND AREA

53,000m²

SPACIOUS

TOTAL UNITS

250 Units

LIMITED

COMMERCIAL

1,500m²

MALL



FOR THE PREMIUM FEW

E - CATALOGUE

2025



34m²
ABOVE
SEA
LEVEL

ELEVATION

The site is 34 meters above sea level, providing unique sea and lush golf course views, contributing to the luxurious feel.

FOOTPRINT

20% of the area is reserved for construction, with a focus on minimizing the environmental footprint.

LANDSCAPE

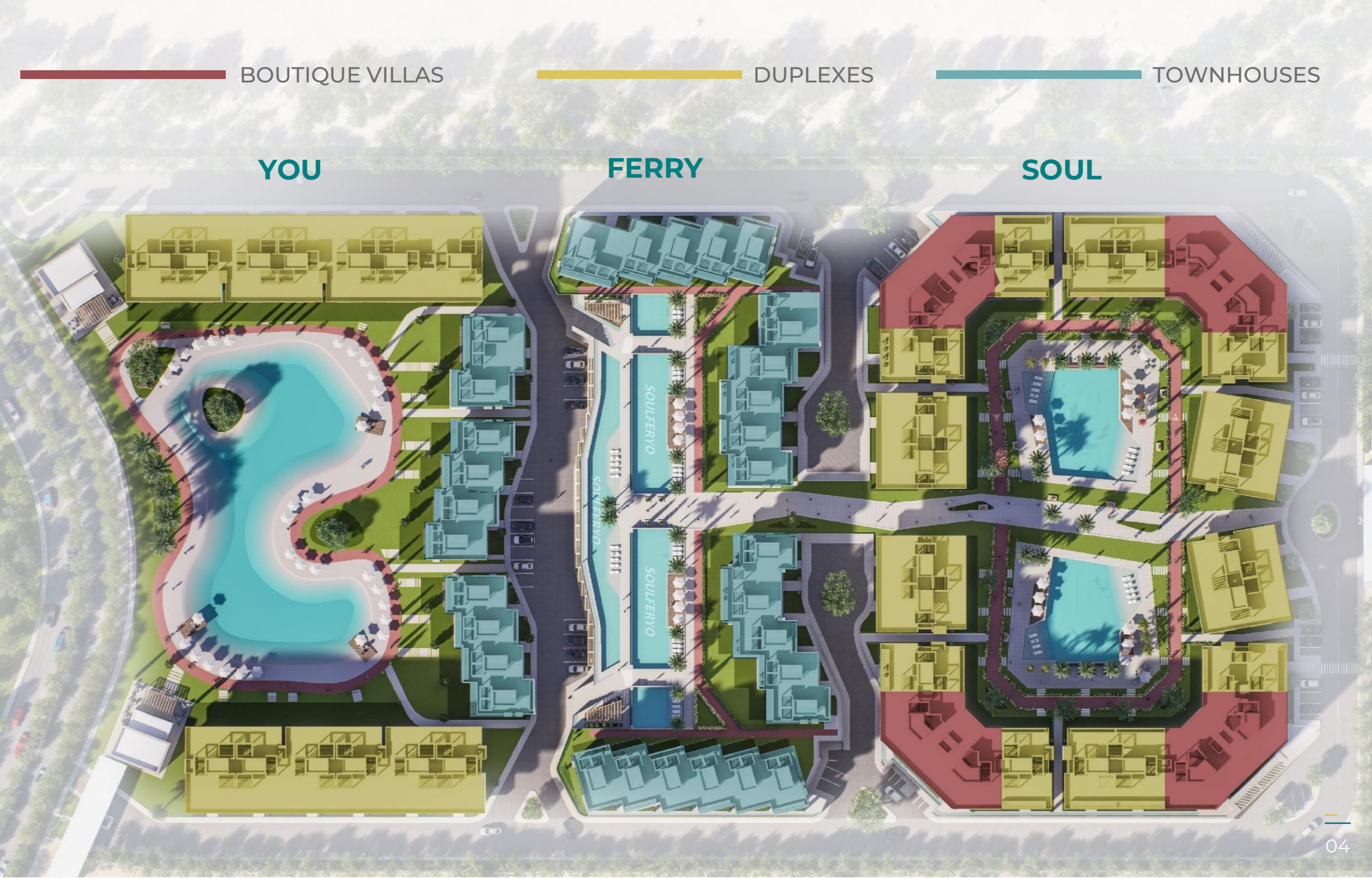
80% of the land will be lush green and fascinating landscapes, enhancing the aesthetic and offering an eco-friendly stunning resort-like atmosphere.

FOR THE PREMIUM FEW

TYPES

COLOR CODES

- DUPLEXES
- TOWNHOUSES
- BOUTIQUE VILLAS



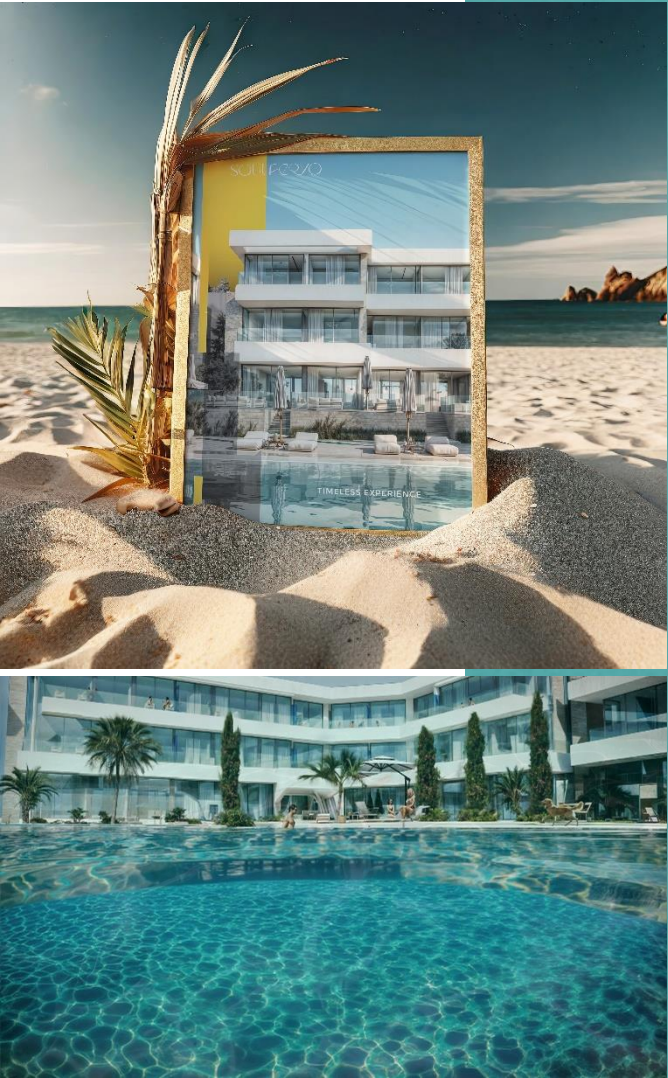
PHASE
DELIVERY

NUMBER PHASE 1

NAME SOUL

DELIVERY 3
YEARS

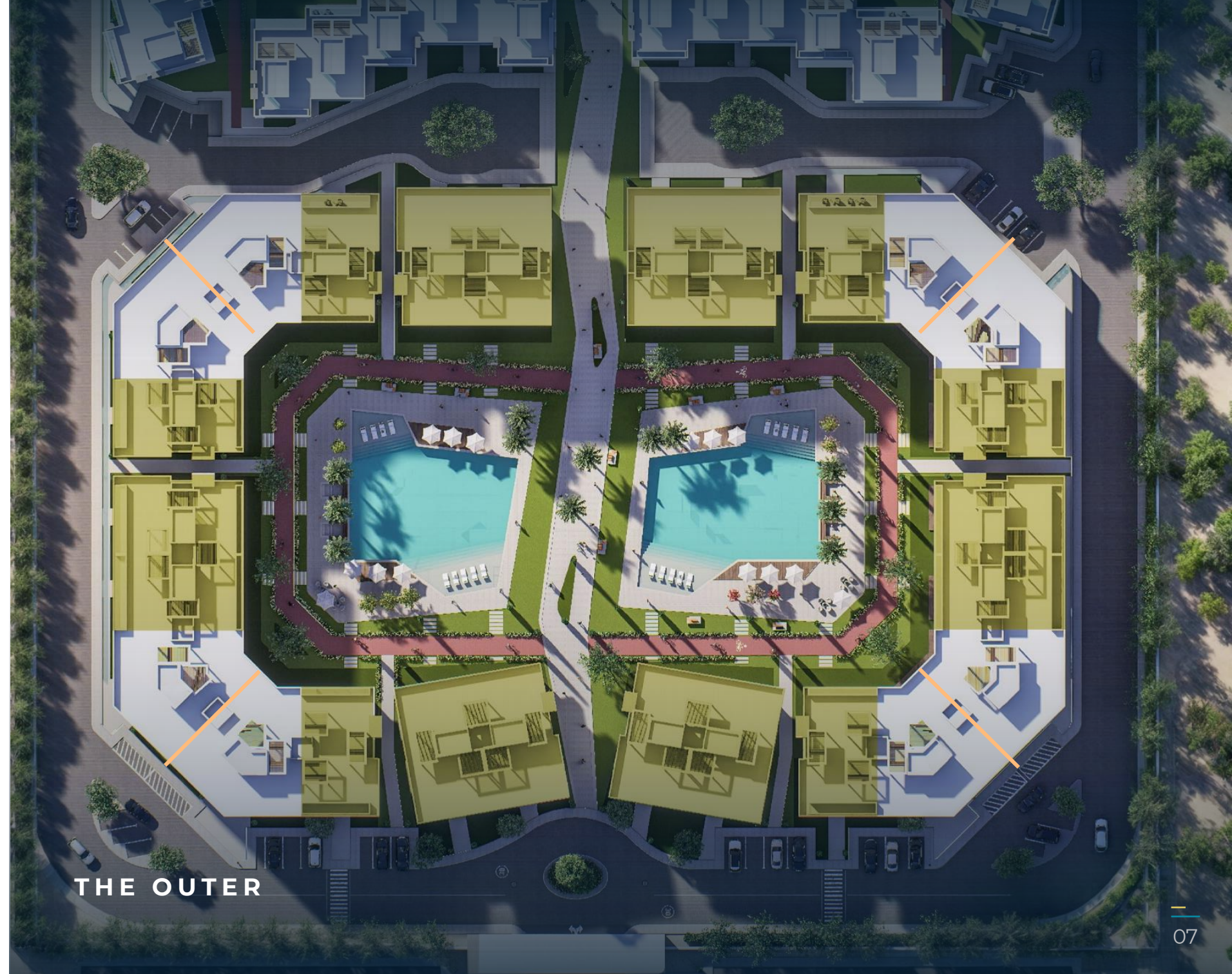
These phases ensure a structured rollout and allow for flexible investment options at different stages.





PHASE 1 SOUL

CONCEPT: This phase likely embodies tranquillity, offering serene mountain views and an environment that encourages peace and reflection. With an emphasis on nature, this area would attract solitudes and peace.



THE OUTER

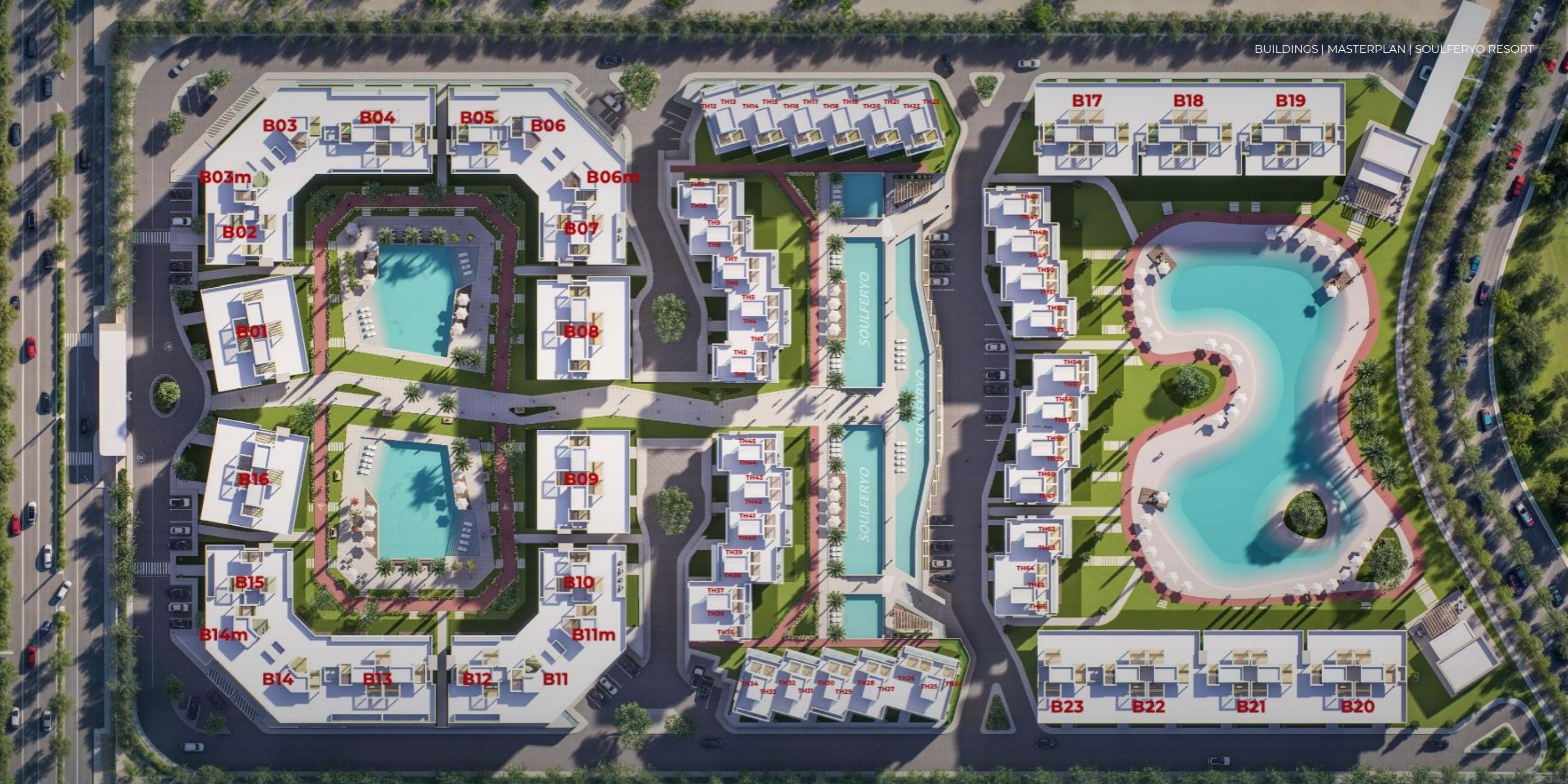
SOULFORYO

PHASE 1
SOUL

AUDIENCE: Residents or visitors who prioritize relaxation, wellness, and perhaps activities such as hiking or meditation.

THE OUTER





BUILDING A

SECOND
FLOOR
PLAN

SECTIONS CODES:
BUILDING: A
UNIT CODE: 2-3



BUILDING A

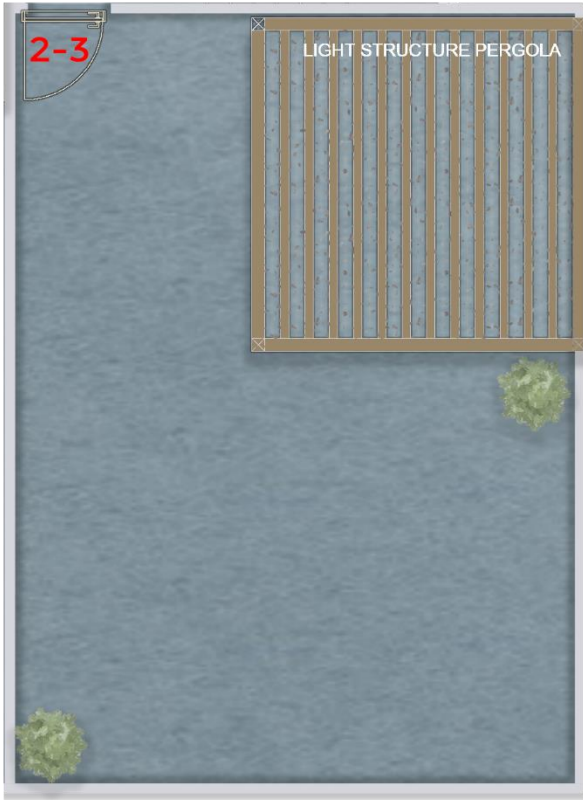
ROOF
FLOOR
PLAN

SECTIONS CODES:
BUILDING: A
UNIT CODE: 2-3

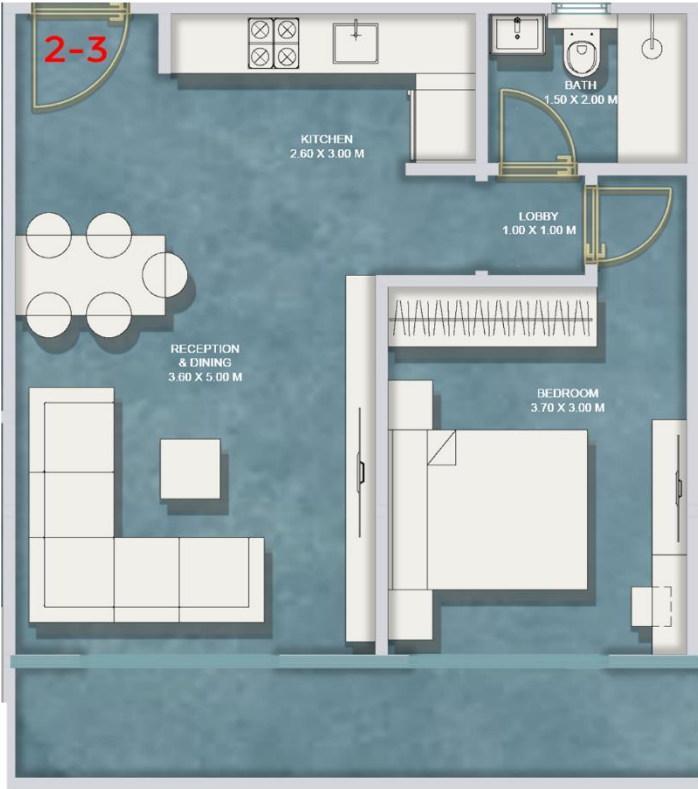


SKY CHIC CONDO

View	MOUNTAIN
Floor	2 nd + ROOF
Bedroom	1
Bathroom	1
Unit Number	2-3
Roof	BACK
Gross	77 M ²
Roof	46 M ²



ROOF FLOOR PLAN



2ND FLOOR PLAN





**SKY CHIC
CONDO**

SECTIONS CODES:

BUILDING: A

UNIT CODE: 2-3

DUPLEX

2-3
SKY CHIC
CONDO

SECTIONS CODES:

BUILDING: A

UNIT CODE: 2-3



DUPLEX

2-3 SKY CHIC CONDO

SECTIONS CODES:

BUILDING: A

UNIT CODE: 2-3

DUPLEX | BUILDING A | PHASE 1 | SOUL | INTERIOR | SOULFERYO RESORT



DUPLEX

2-3
SKY CHIC
CONDO

SECTIONS CODES:
BUILDING: A
UNIT CODE: 2-3



DUPLEX

2-3
SKY CHIC
CONDO

SECTIONS CODES:
BUILDING: A
UNIT CODE: 2-3



DUPLEX

2-3
SKY CHIC
CONDO

SECTIONS CODES:
BUILDING: A
UNIT CODE: 2-3



DUPLEX

2-3
SKY CHIC
CONDO

SECTIONS CODES:

BUILDING: A

UNIT CODE: 2-3

DUPLEX | BUILDING A | PHASE 1 | SOUL | INTERIOR | SOULFERYO RESORT



DUPLEX

2-3
SKY CHIC
CONDO

SECTIONS CODES:
BUILDING: A
UNIT CODE: 2-3



DUPLEX

2-3
SKY CHIC
CONDO

SECTIONS CODES:
BUILDING: A
UNIT CODE: 2-3



DUPLEX

2-3
SKY CHIC
CONDO

SECTIONS CODES:
BUILDING: A
UNIT CODE: 2-3



DUPLEX | BUILDING A | PHASE 1 | SOUL | INTERIOR | SOULFERYO RESORT

DUPLEX

2-3
SKY CHIC
CONDO

SECTIONS CODES:
BUILDING: A
UNIT CODE: 2-3



DUPLEX

2-3
SKY CHIC
CONDO

SECTIONS CODES:
BUILDING: A
UNIT CODE: 2-3



DUPLEX

2-3
SKY CHIC
CONDO

SECTIONS CODES:
BUILDING: A
UNIT CODE: 2-3

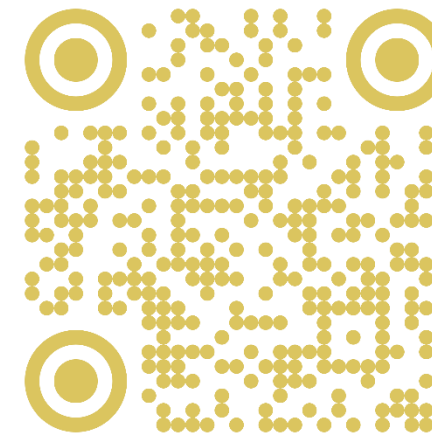


TIMELESS EXPERIENCE

ELEGANCE OF DESIGN MEETS THE TRANQUILLITY OF NATURE, INVITING OWNERS AND VISITORS TO ENJOY AN UNMATCHED LIFESTYLE IN ONE OF THE MOST BEAUTIFUL LOCATIONS IN THE WORLD.

360°
TOUR

CLICK
HERE



SCAN
QR

VR
EXPERIENCE

SOULFORYO
SAHL HASHEESH

FOR THE PREMIUM FEW

E – CATALOGUE

2025

26

DUPLEX

2-3 SKY CHIC CONDO

SECTIONS CODES:

BUILDING: A

UNIT CODE: 2-3



DUPLEX

2-3 SKY CHIC CONDO

SECTIONS CODES:

BUILDING: A

UNIT CODE: 2-3

DUPLEX | BUILDING A | PHASE 1 | SOUL | EXTERIOR | SOULFERYO RESORT



DUPLEX

2-3
SKY CHIC
CONDO

SECTIONS CODES:
BUILDING: A
UNIT CODE: 2-3



DUPLEX

2-3
SKY CHIC
CONDO

SECTIONS CODES:
BUILDING: A
UNIT CODE: 2-3



DUPLEX

2-3
SKY CHIC
CONDO

SECTIONS CODES:
BUILDING: A
UNIT CODE: 2-3



DUPLEX

2-3
SKY CHIC
CONDO

SECTIONS CODES:
BUILDING: A
UNIT CODE: 2-3



DUPLEX

2-3 SKY CHIC CONDO

SECTIONS CODES:

BUILDING: A

UNIT CODE: 2-3



SOULfERYO

SAHL HASHEESH



SOULfERYO
DEVELOPMENTS

TIMELESS
EXPERIENCE



FOR THE
PREMIUM
FEW

THANK YOU!

SOULFERYO

ADDRESS

CG9 Old Town Sahl Hasheesh,
Hurghada, Red Sea, Egypt.

HOTLINE:

17362

DIRECT:

ENGLISH: +2 010 300 200 26

GERMAN: +2 010 300 200 51

RUSSIAN: +2 010 300 200 21

WEBSITE

www.buildixrealestate.com

EMAIL

info@buildixrealestate.com