

SOULFERYO

SAHL HASHEESH

SOULFERYO RESORT
E – CATALOGUE 2025

ELEGANCE OF DESIGN MEETS
THE TRANQUILLITY OF
NATURE, INVITING OWNERS
AND VISITORS TO ENJOY AN
UNMATCHED LIFESTYLE IN ONE
OF THE MOST BEAUTIFUL
LOCATIONS IN THE WORLD.

SOULFERYO

ADDRESS:

CG 7 Old Town Sahl Hasheesh,
Hurghada, Red Sea, Egypt.

DIRECT:

+2 010 70 10 99 99

WEBSITE:

SOULFERYO.COM

EMAIL:

INFO@SOULFERYO.COM

SOULFERYO
DEVELOPMENTS

TIMELESS
EXPERIENCE



FOR THE
PREMIUM
FEW

SOULFERYO

PARTNERS OF SUCCESS

SOULFERYO
DEVELOPMENTS

SOULFERYO
DEVELOPER

RG
ROMA GROUP

SOULFERYO
OWNER


AZURE
PLANNING & ARCHITECTURE

PLANNING
& ARCHITECTURE


BUILDIX[®]
PROJECT MANAGEMENT

PROJECT
MANAGEMENT


BUILDIX[®]
ARCHITECTURE & INTERIOR DESIGN

ARCHITECTURE
& INTERIOR DESIGN


BUILDIX[®]
BRANDING & MARKETING

BRANDING
& MARKETING


BUILDIX[®]
REAL ESTATE INVESTMENT

REAL ESTATE
INVESTMENT



THE STORY

SOUL – FER – YO

SOUL

The circle signifies many sacred and spiritual concepts and it's how light forms. It represents the soul, unity, infinity, wholeness, the universe, divinity, balance, stability and perfection, among others.

FERRY

A ferry dream may reflect your current state of mind and your readiness to face new experiences.

YOU

The sea represents yourself with its calm presence and sense of space. Soulferyo is gifted with a place to reflect on the past, and to dream and hope about the future.

FOR THE PREMIUM FEW

E – CATALOGUE

2025

00

SOULFERYO DEVELOPMENTS

Established in 1980, Soulferyo Developments prides itself in creating a new standard in resort and residential living through its outstanding record of accomplishments. With an in-house construction and design office that includes an expert team of engineers, Soulferyo Developments' holistic approach of building new communities embraces all practices from vision to design, construction, finishing and operation, which has allowed Soulferyo to continually deliver the highest standards to its clients. We have amassed a large client-base who believe in our expertise and in the strong investments made with a property purchase from Soulferyo Developments. This trust continues to fuel our drive to grow even further and successfully deliver on schedule several projects in Cairo and the Red Sea. With more projects currently being developed.



MESSAGE FROM THE CHAIRMAN

We strive to build sustainable communities integrating architectural designs with state-of-the-art landscape. We promise our clients the perfect balance between privacy and social life, as we design and build a unique lifestyle. For more than 4 decades we, at Soulferyo were able to build a strong bond with our distinguished clients based on trust and perfection. Soulferyo team members are dedicated to fulfil the needs of our clients and to introduce the latest technology while sustaining a convenient environment for our residents to live.

FOR THE PREMIUM FEW

E – CATALOGUE

2025

01



**Soulferyo**
Sahl Hasheesh
CLICK HERE

JAMARAN

Pyramisa Beach
Sahl Hasheesh

Veranda Sahl
Hasheesh Resort

Baron Palace
Sahl Hasheesh

Tropitel Sahl Hasheesh

Sea Horse Sahl
Hasheesh Hurghada

Sunrise Royal
Makadi Resort

MAKADI BAY

LOCATION
SAHL HASHEESH
HURGHADA
RED SEA
EGYPT

**25**
minutes

to Hurghada
Downtown

**20**
minutes

to Hurghada
Airport

**15**
minutes

to Senzo
Mall

**5**
minutes

to Old Town
Sahl Hasheesh

FOR THE PREMIUM FEW

E – CATALOGUE

2025

SAHL HASHEESH

SOULFEROYO
DEVELOPMENTS

TIMELESS
EXPERIENCE



FOR THE
PREMIUM
FEW

SOULFERYO



TIMELESS EXPERIENCE

PROJECT OVERVIEW

LAND AREA

53,000m²

SPACIOUS

TOTAL UNITS

250 Units

LIMITED

COMMERCIAL

1,500m²

MALL





FOOTPRINT

20% of the area is reserved for construction, with a focus on minimizing the environmental footprint.

FOR THE PREMIUM FEW

E - CATALOGUE

2025

LANDSCAPE

80% of the land will be lush green and fascinating landscapes, enhancing the aesthetic and offering an eco-friendly stunning resort-like atmosphere.

ELEVATION

The site is 34 meters above sea level, providing unique sea and lush golf course views, contributing to the luxurious feel.

34 m
ABOVE
SEA
LEVEL

FOR THE PREMIUM FEW

E – CATALOGUE

2025

08



SEA VIEW



TYPES

DUPLEXES & FLATS

TOWNHOUSES

BOUTIQUE
VILLAS

FOR THE PREMIUM FEW

E – CATALOGUE

2025

10

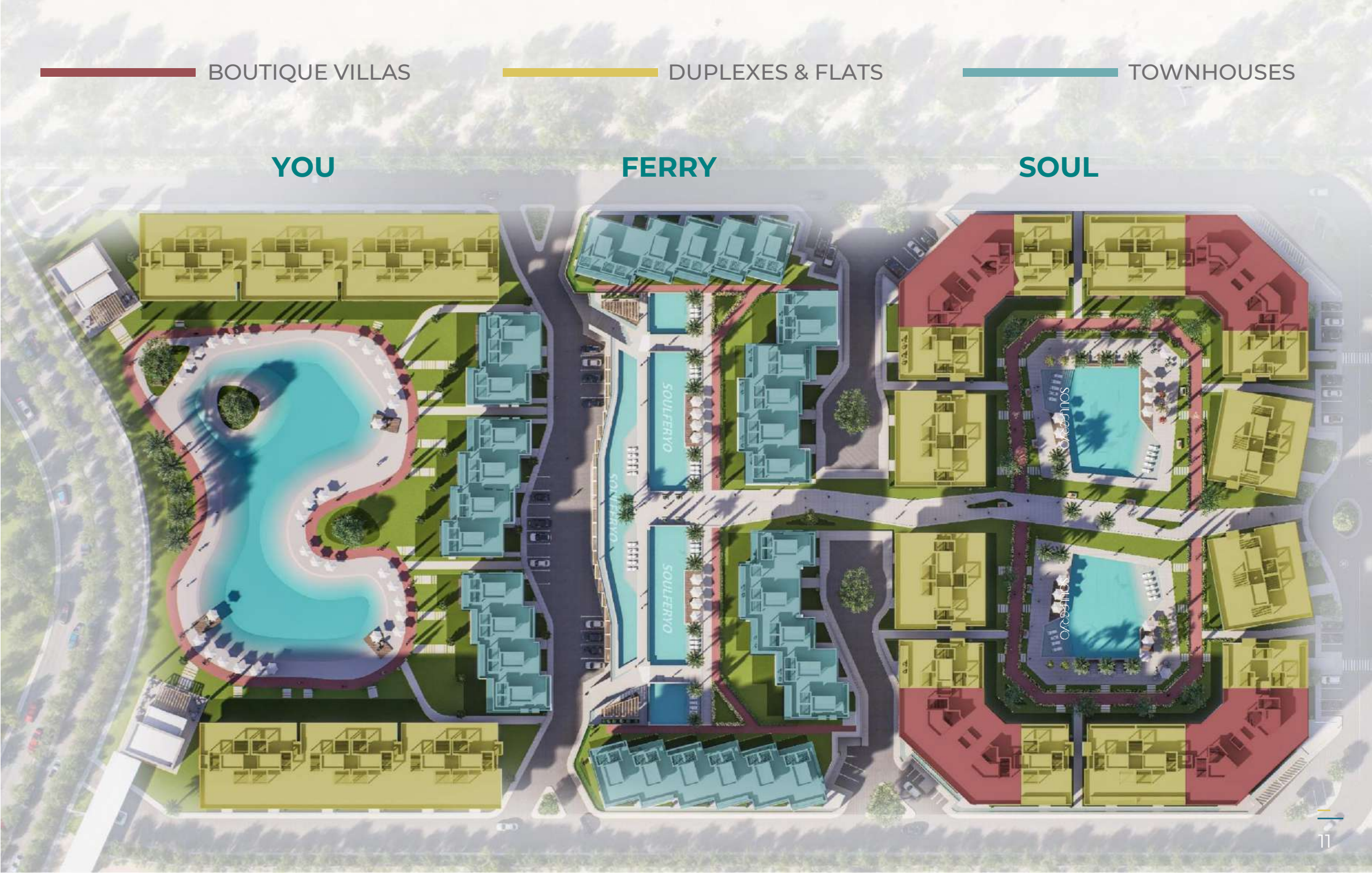
TYPES

COLOR CODES

DUPLEXES & FLATS

TOWNHOUSES

BOUTIQUE
VILLAS



SAHL HASHEESH

SOULfERYO

SAHL HASHEESH

SOULfERYO
DEVELOPMENTS

TIMELESS
EXPERIENCE



FOR THE
PREMIUM
FEW

PHASES
DELIVERY

NUMBER PHASE 1

NAME SOUL

DELIVERY 3
YEARS

These phases ensure a structured rollout and allow for flexible investment options at different stages.



PHASE 1
SOUL

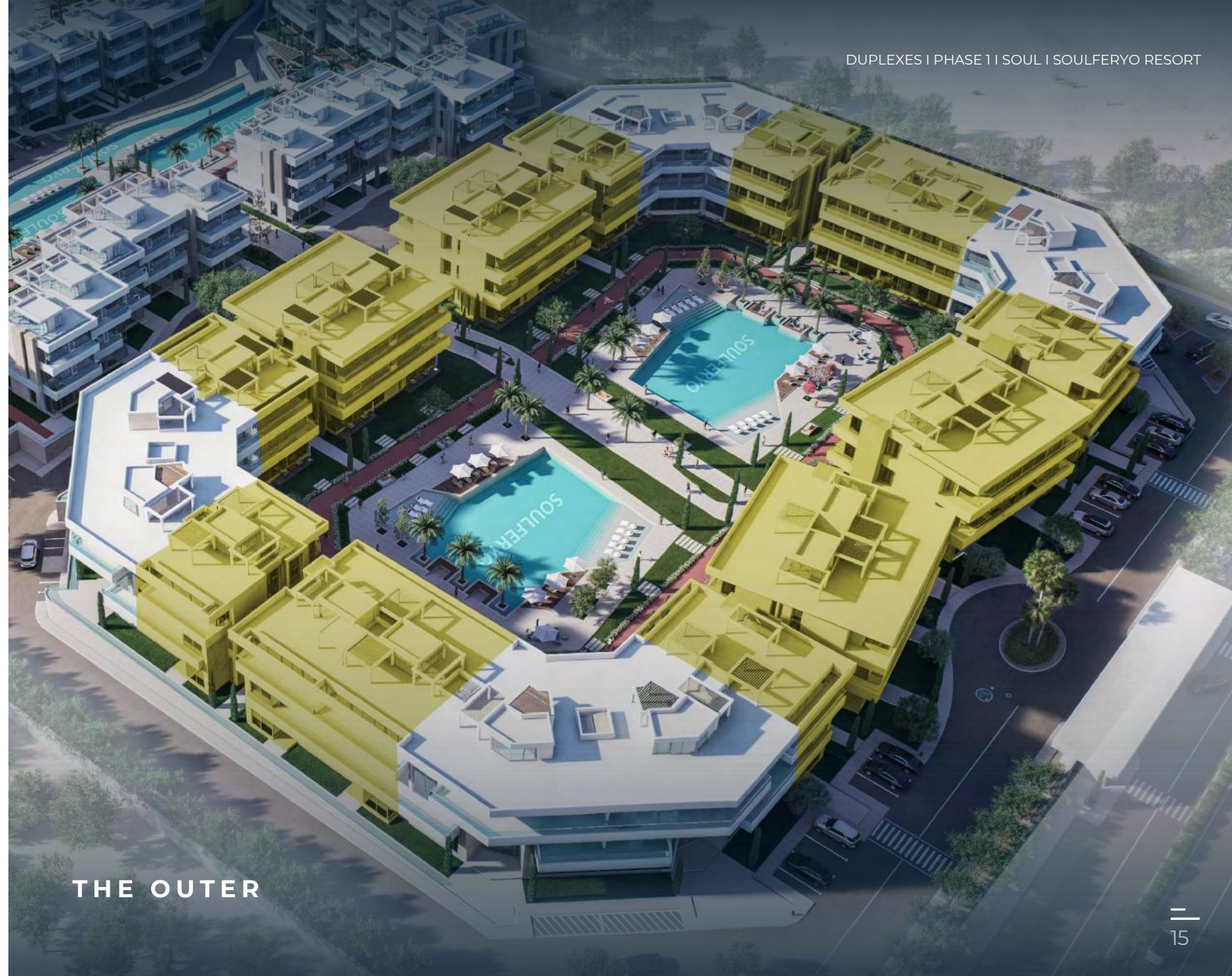
CONCEPT: This phase likely embodies tranquility, offering serene mountain views and an environment that encourages peace and reflection. With an emphasis on nature, this area would attract solitudes and peace.



PHASE 1
SOUL

AUDIENCE: Residents or visitors who prioritize relaxation, wellness, and perhaps activities such as hiking or meditation.

THE OUTER









SOULFERYO

PHASE II | SOUL | SOULFERYO RESORT

SOULFERYO



SOULFERYO

PHASE 1 | SOUL | SOULFERYO RESORT





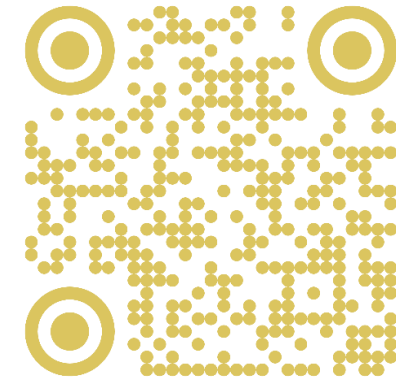




TIMELESS EXPERIENCE

[CLICK HERE](#)

360°
TOUR



SCAN
QR

ELEGANCE OF DESIGN MEETS THE TRANQUILLITY
OF NATURE, INVITING OWNERS AND VISITORS TO
ENJOY AN UNMATCHED LIFESTYLE IN ONE OF THE
MOST BEAUTIFUL LOCATIONS IN THE WORLD.

VR
EXPERIENCE

SOULFEROYO
SAHL HASHEESH

FOR THE PREMIUM FEW

E – CATALOGUE

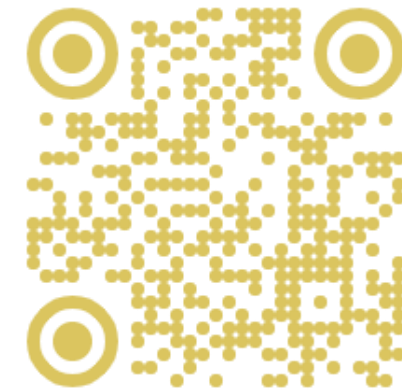
2025

25

TIMELESS EXPERIENCE

[CLICK HERE](#)

360°
TOUR



SCAN
QR

VR
EXPERIENCE

ELEGANCE OF DESIGN MEETS THE TRANQUILLITY
OF NATURE, INVITING OWNERS AND VISITORS TO
ENJOY AN UNMATCHED LIFESTYLE IN ONE OF THE
MOST BEAUTIFUL LOCATIONS IN THE WORLD.

SOULFORYO
SAHL HASHEESH

FOR THE PREMIUM FEW

E – CATALOGUE

2025

26

TIMELESS EXPERIENCE

SOULferyo

SAHL HASHEESH

ELEGANCE OF DESIGN MEETS THE TRANQUILITY OF NATURE, INVITING OWNERS AND VISITORS TO ENJOY AN UNMATCHED LIFESTYLE IN ONE OF THE MOST BEAUTIFUL LOCATIONS IN THE WORLD.

FOR THE PREMIUM FEW

E-CATALOGUE

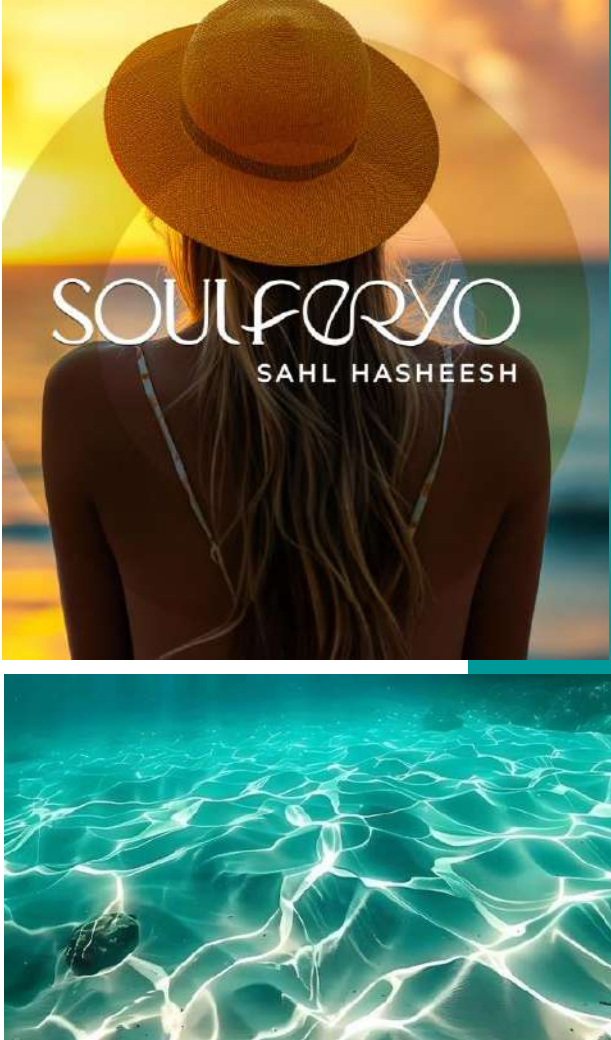
2025

27

PHASES
DELIVERY

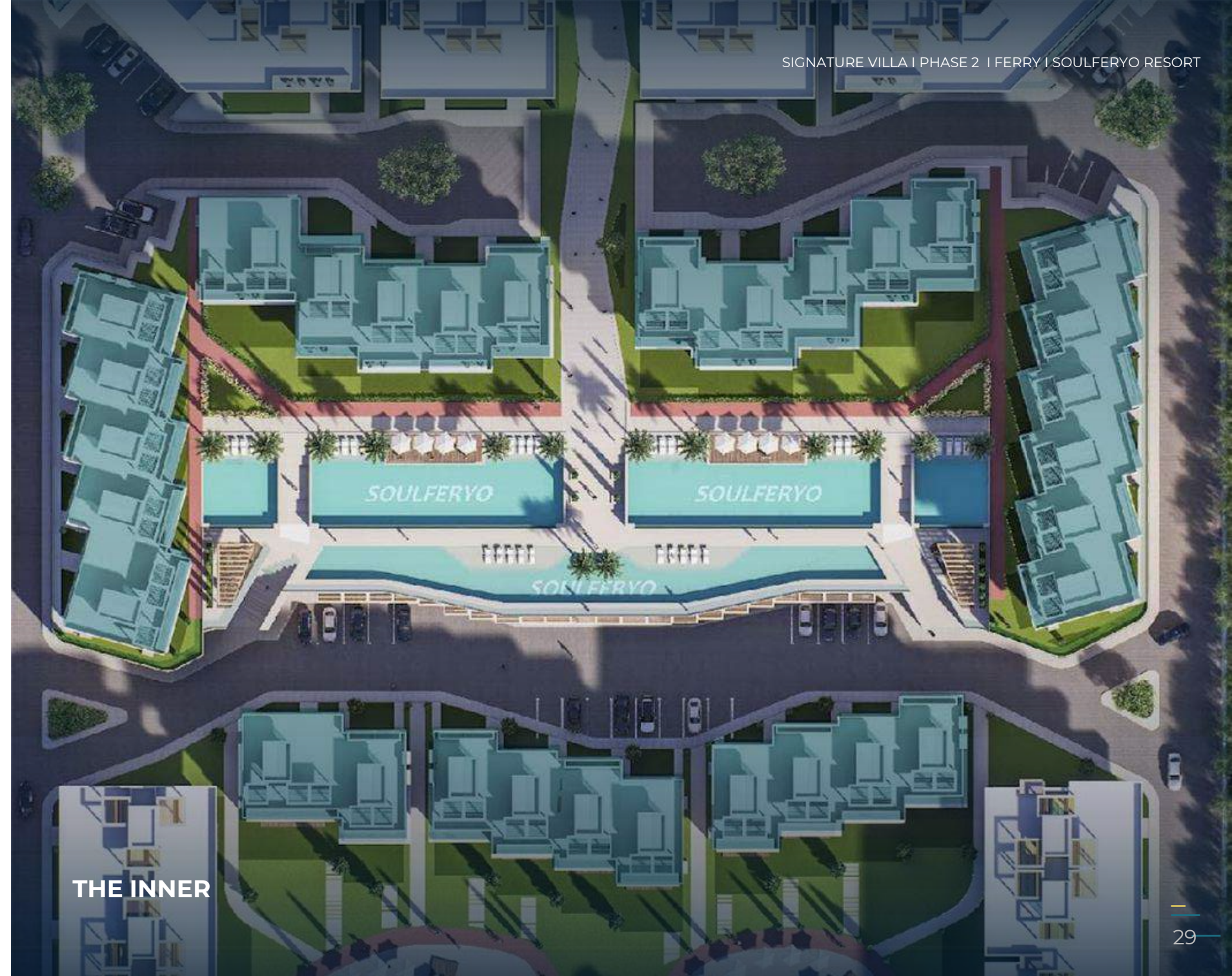
| | |
|----------|------------|
| NUMBER | PHASE 2 |
| NAME | FERRY |
| DELIVERY | 4 YEARS |

These phases ensure a structured rollout and allow for flexible investment options at different stages.



PHASE 2
FERRY

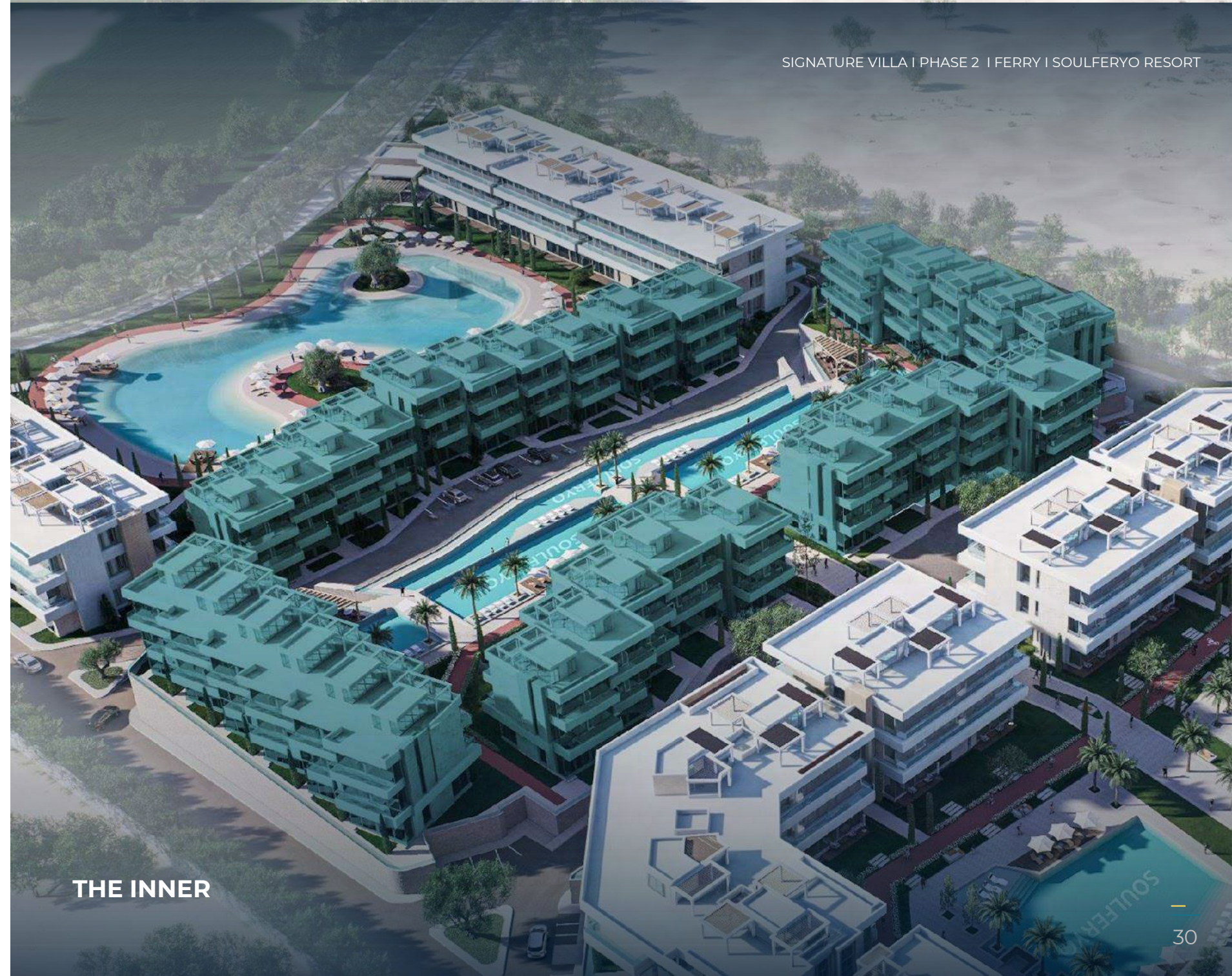
CONCEPT: With stunning views of the Red Sea, this phase likely embodies luxury and freedom, offering upscale living spaces with direct access to the sea. It may focus on high-end amenities such as private beaches, water sports, privacy, & exclusive services.



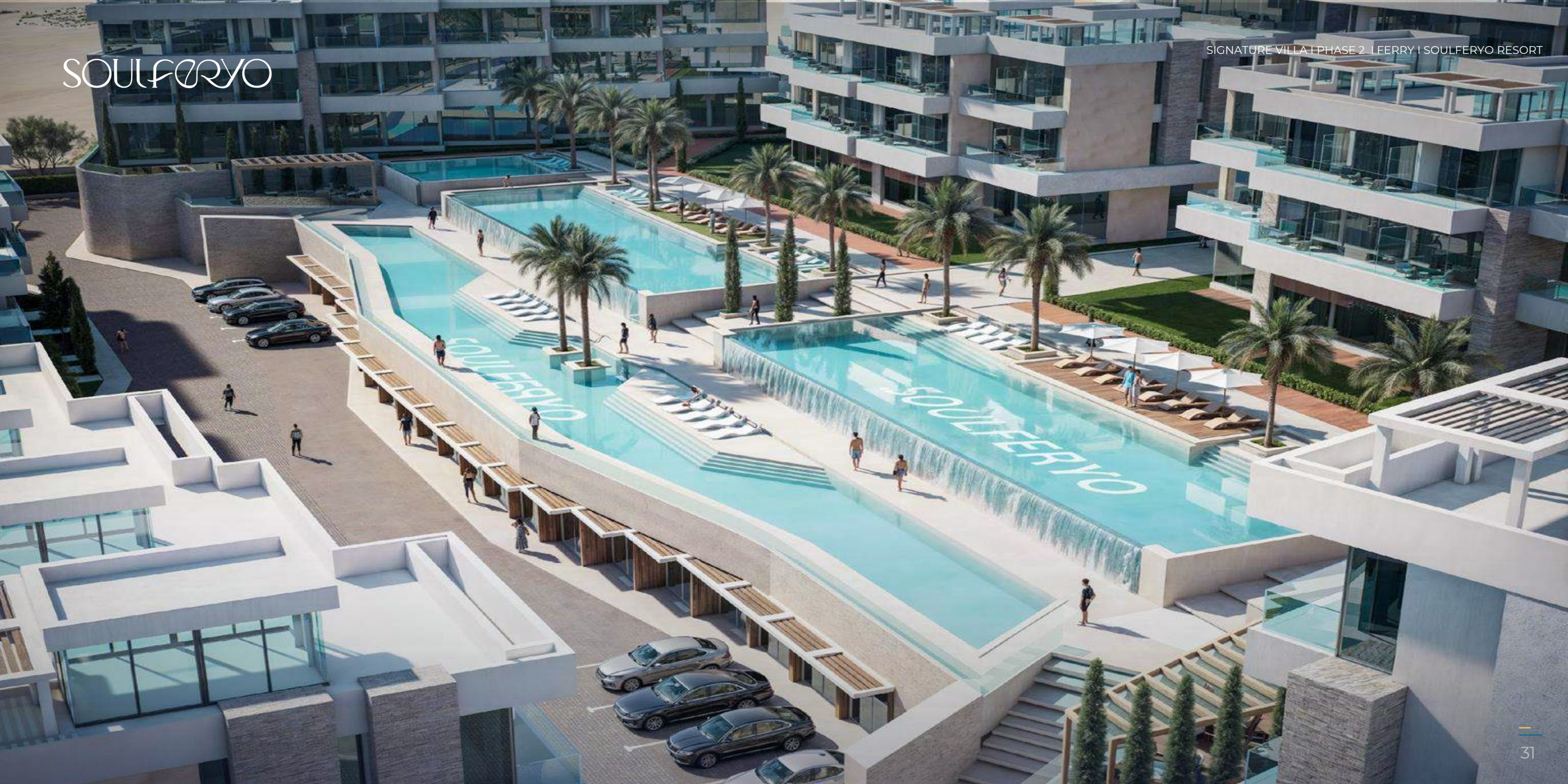
THE INNER

PHASE 2
FERRY

AUDIENCE: Individuals or families who seek a combination of relaxation and activity, enjoying the balance between nature and community life.



THE INNER







BACK



FRONT







SOULFERYO

COMMERCIAL AREA | PHASE 2 | FERRY | SOULFERYO RESORT



SOULFERYO

COMMERCIAL AREA | PHASE 2 | FERRY | EXTERIOR | SOULFERYO RESORT

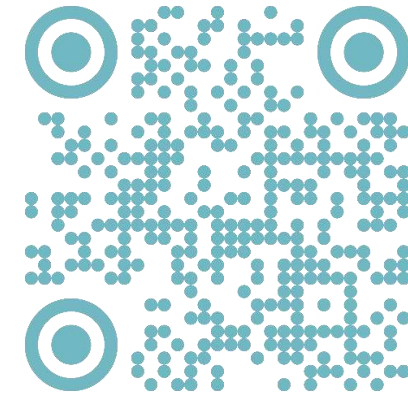




TIMELESS EXPERIENCE

[CLICK HERE](#)

360°
TOUR



SCAN
QR

VR
EXPERIENCE

ELEGANCE OF DESIGN MEETS THE TRANQUILLITY OF NATURE, INVITING OWNERS AND VISITORS TO ENJOY AN UNMATCHED LIFESTYLE IN ONE OF THE MOST BEAUTIFUL LOCATIONS IN THE WORLD.

SOULFORYO
SAHL HASHEESH

FOR THE PREMIUM FEW

E – CATALOGUE

2025

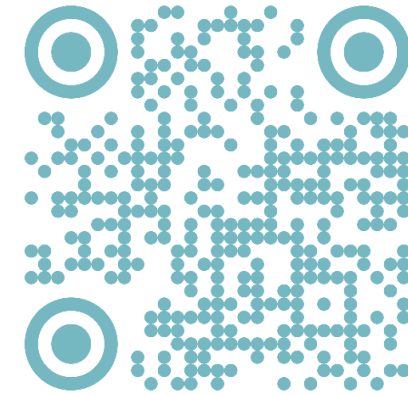
40

TIMELESS EXPERIENCE

ELEGANCE OF DESIGN MEETS THE TRANQUILITY OF NATURE, INVITING OWNERS AND VISITORS TO ENJOY AN UNMATCHED LIFESTYLE IN ONE OF THE MOST BEAUTIFUL LOCATIONS IN THE WORLD.

360°
TOUR

CLICK HERE



SCAN
QR

VR
EXPERIENCE

SOULFEROYO
SAHL HASHEESH

FOR THE PREMIUM FEW

E – CATALOGUE

2025

41

TIMELESS EXPERIENCE

SOULFORYO

SAHL HASHEESH

ELEGANCE OF DESIGN MEETS THE TRANQUILLITY
OF NATURE, INVITING OWNERS AND VISITORS TO
ENJOY AN UNMATCHED LIFESTYLE IN ONE OF THE
MOST BEAUTIFUL LOCATIONS IN THE WORLD.

SOULFORYO
DEVELOPMENTS

TIMELESS
EXPERIENCE



FOR THE
PREMIUM
FEW





SOULFERYO

SAHL HASHEESH

SOULFERYO
DEVELOPMENTS

TIMELESS
EXPERIENCE



FOR THE
PREMIUM
FEW

THANK YOU!

SOULFERYO

ADDRESS:

CG 7 Old Town Sahl Hasheesh,
Hurghada, Red Sea, Egypt.

DIRECT:

+2 010 70 10 99 99

WEBSITE:

SOULFERYO.COM

EMAIL:

INFO@SOULFERYO.COM