

## Postcards From The Past



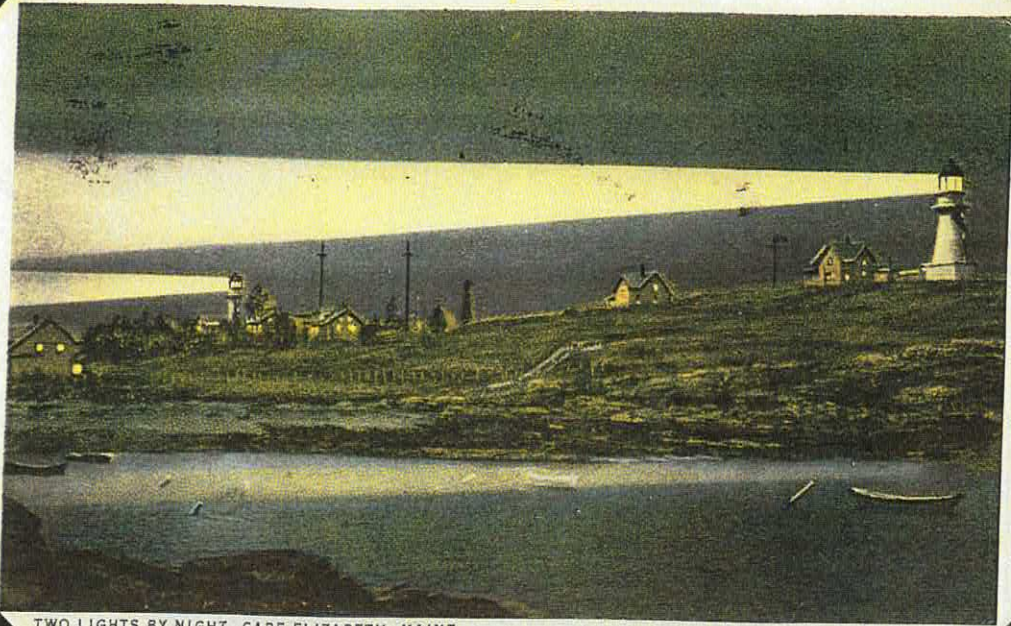
One of the most varied and interesting area of collectibles is also one of the most popular due in part to the relatively low expense of starting and building a collection. Whatever your personal area of interest, be it Animals, Art, Fairy Tales, Costumes, Lighthouses, Military, Holidays, Sports or a myriad of other topics, all are thoroughly represented through Postcards.

If you enjoy travel, you can journey to any country or region of the world, or just revisit your hometown finding cards from the time that you were growing up there. Most Postcard collectors start just that way, picking up a card or two that brings back memories of a simpler and less hectic time.

The modern Postcard as we know it developed from 1901- 1907, the Undivided Back Era, and is distinguished by the address only appearing on the reverse and the message being included around the view on the front.

The Divided Back Era (1907-1915) allowed for both an address and message on the reverse while leaving the front view free of extraneous markings.

## *Postcards From The Past*



TWO LIGHTS BY NIGHT. CAPE ELIZABETH, MAINE.

*From about 1915 – 1930 the White Border Era ruled, and is easily distinguished by the white border around the entire Postcard.*

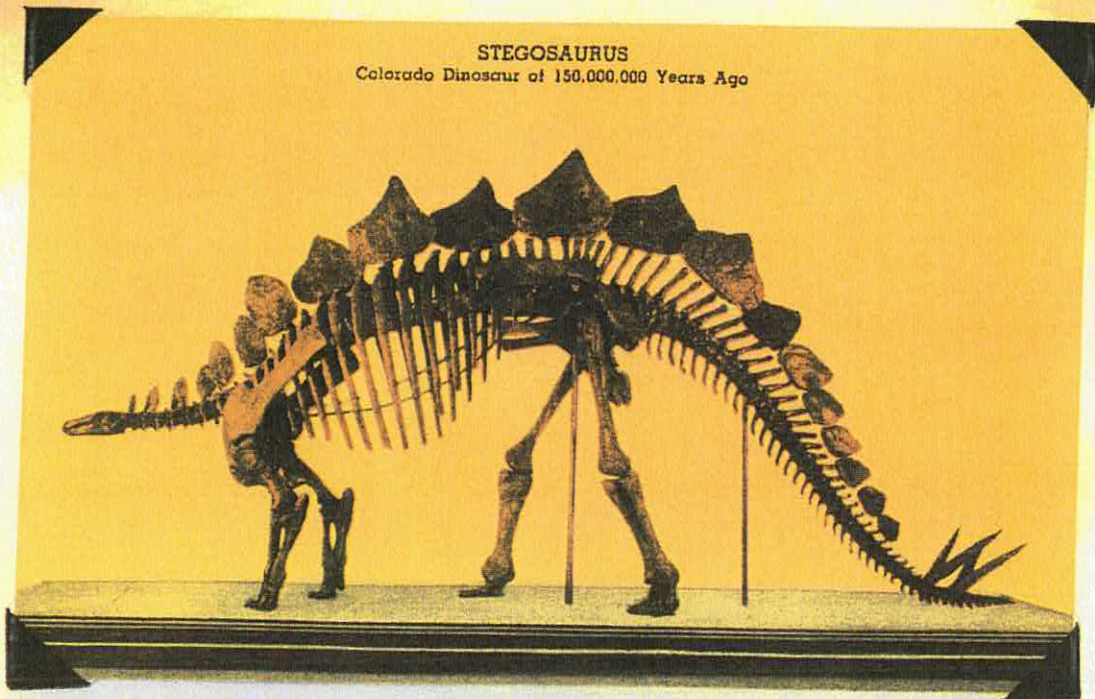
*The next major development in Postcard production is called the Linen Era from 1930 to WWII. This the type of postcard other than the Photochromes that are most frequently seen today.*

*While one can still find Postcards at Flea Markets, the greatest variety of better Postcards is best found with dealers specializing in Paper Collectibles, Stamps and Ephemera.*

*You will always find hundreds or even a few thousand Postcards offered by our Tucson Stamp Club member dealers at our monthly, or on their dealer pages on this website.*

*Happy Hunting!!!*

# Postcards From The Past



Linen Postcard



Chrome Postcard