

MARK TWAIN in 1871,
His last year in Buffalo

Samuel Langhorne Clemens
" Mark Twain "



FIRST DAY OF ISSUE

Nov. 30, 1835 Florida, Mo. - April 20, 1910 Redding, Ct.
1940 Famous American Series - Authors Scott Cat. # 863



Tom Sawyer

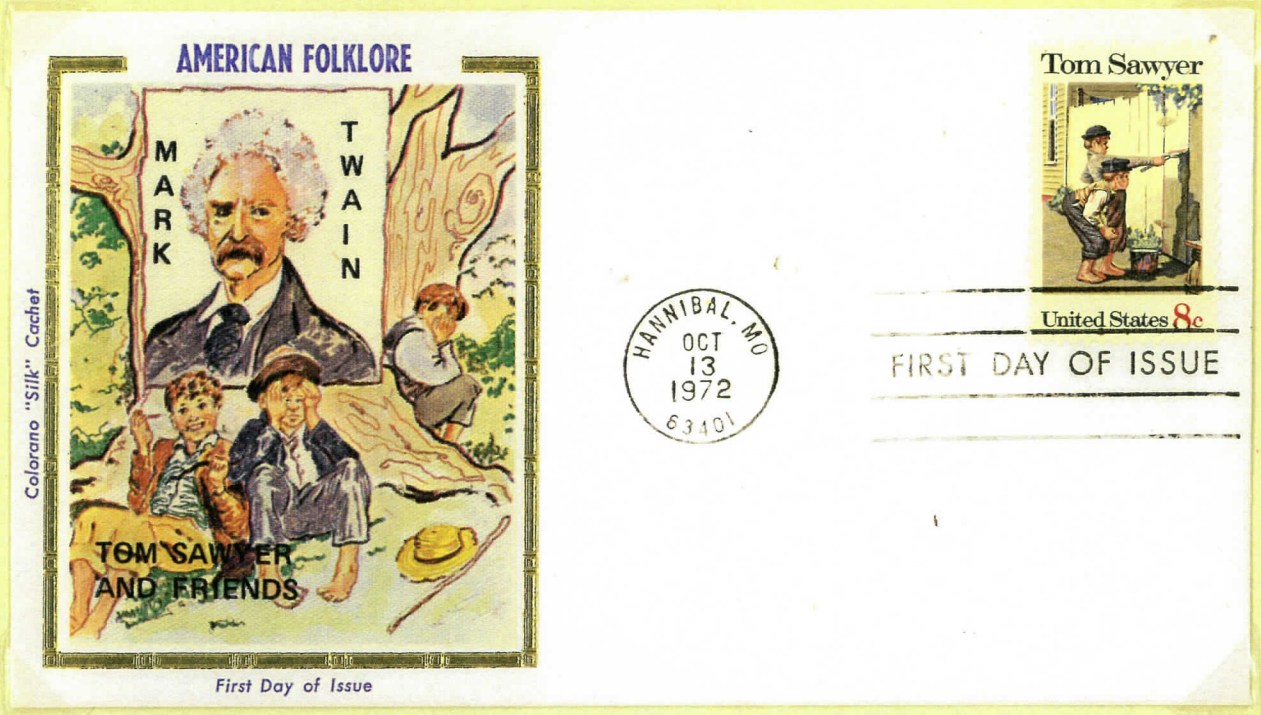


United States 8c

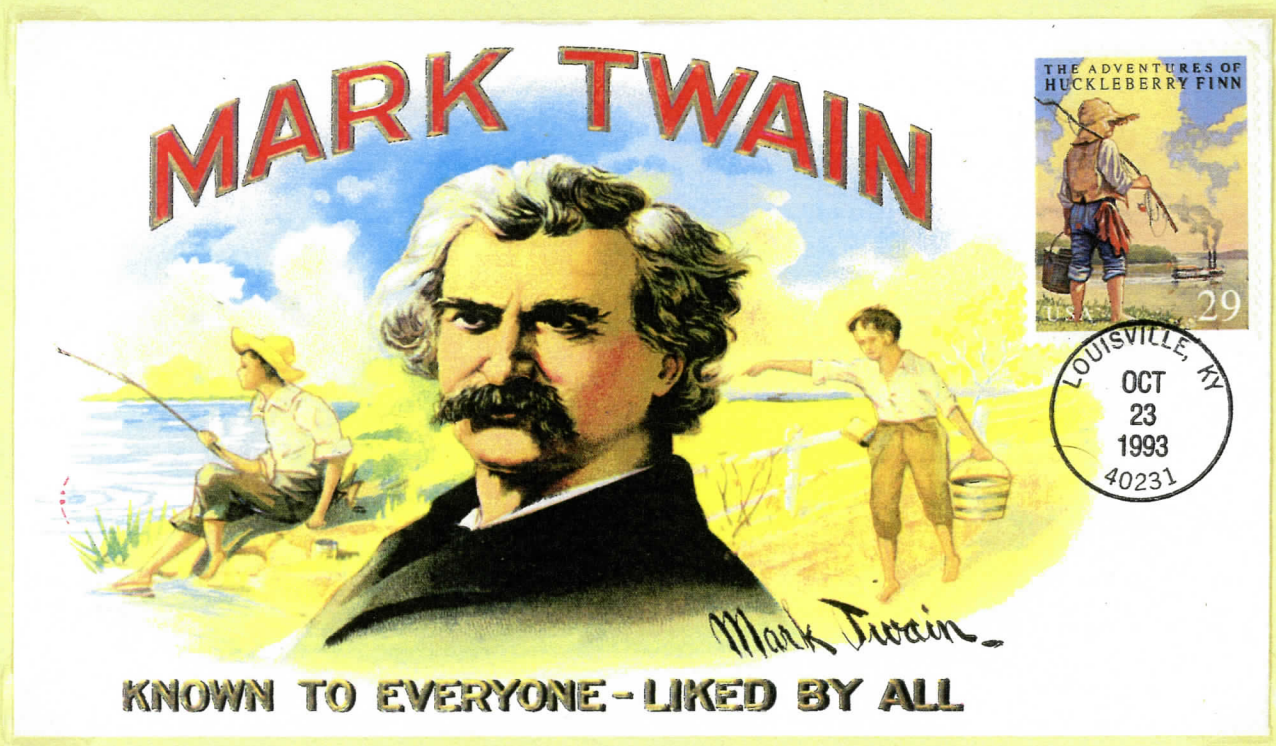
FIRST DAY OF ISSUE



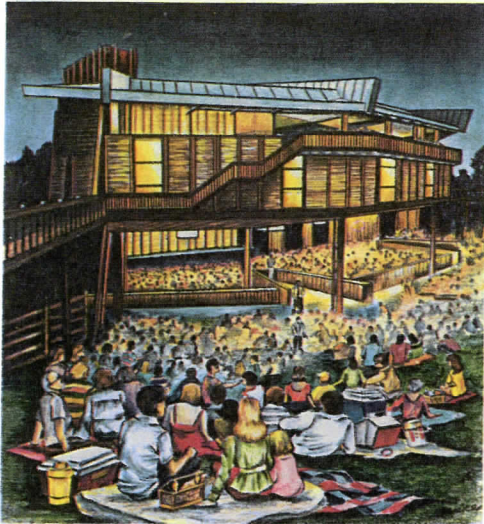
Samuel L. Clemens (1835-1910)
American author and humorist. He was a member of Polar Star Lodge No. 79, St. Louis, Mo. (EA May 22, 1861, FC, June 12, 1861, MM July 10, 1861). He was later suspended and reinstated on April 24, 1867. He dismissed Oct. 8, 1868



"The Adventures of Tom Sawyer" - Mark Twain 1876



"Adventures of Huckleberry Finn" - 1884 Mark Twain



WOLF TRAP FARM PARK
(Vienna, Virginia)

Thousands Enjoyed Enchanting Summer Evenings At
Our Country's First National Park For The Performing
Arts.



FIRST DAY OF ISSUE

1972 Wolf Trap Farm

Scott Cat. # 1452

American
Folklore
SERIES
**TOM
SAWYER**



SAMUEL L. CLEMENS
AUTHORED
"THE ADVENTURES
OF TOM SAWYER"
UNDER THE NAME
MARK TWAIN



Fleetwood

FIRST DAY OF ISSUE



Tom Sawyer



United States 8c

Tom Sawyer



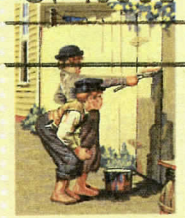
United States 8c

Tom Sawyer



United States 8c

Tom Sawyer



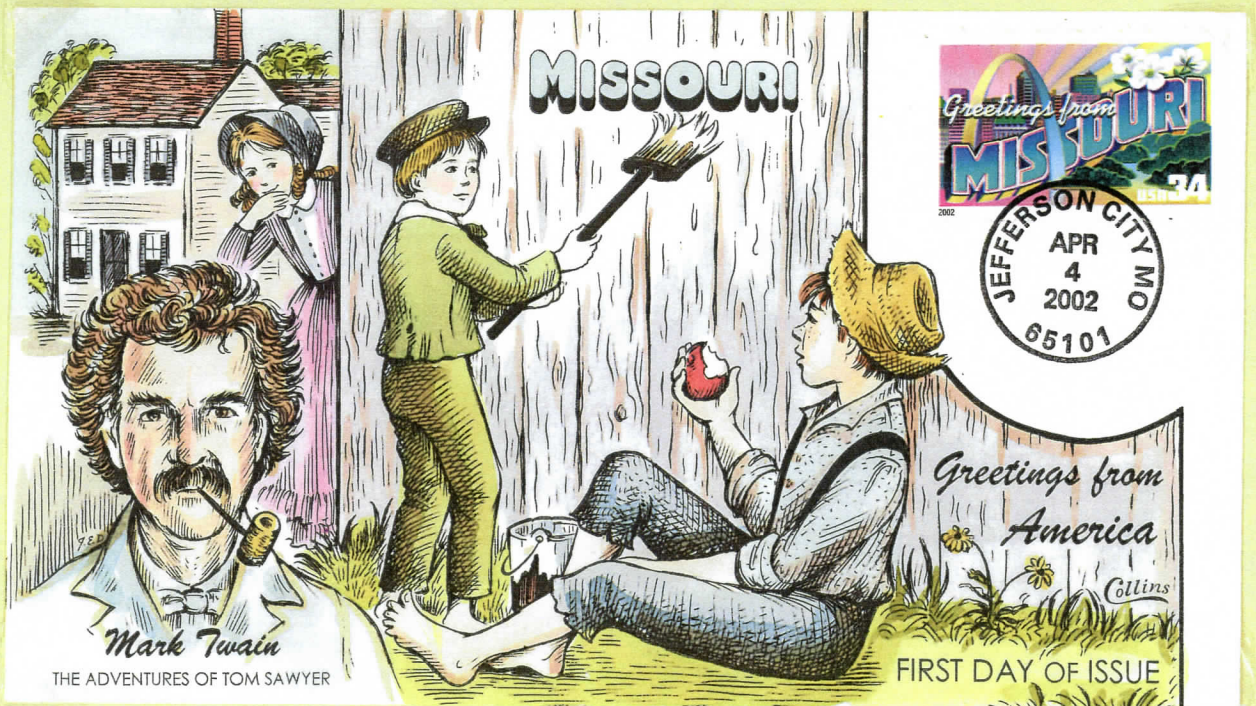
United States 8c

Oct. 13, 1972 "Tom Sawyer" by Norman Rockwell Cat. #1470



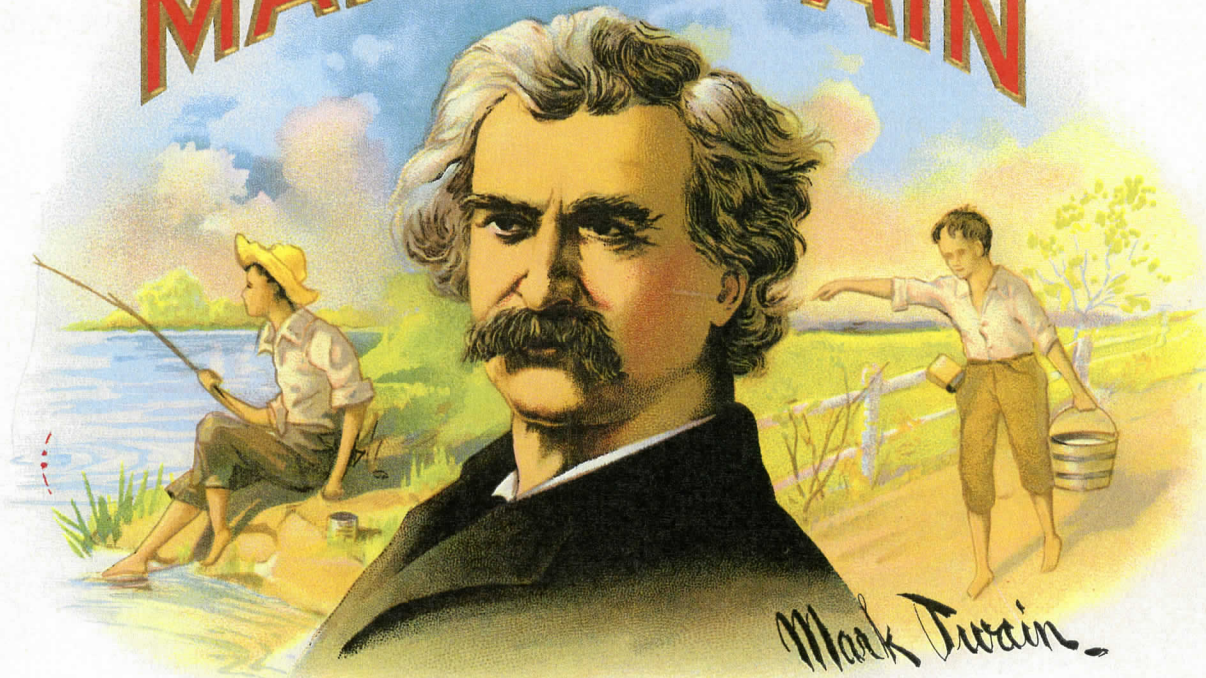
TOM SAWYER MOTOR INN
Gainesville, Florida

Other Tom Sawyer Inns in Albany & Elmira, N.Y.



Collins Hand Painted Cover

MARK TWAIN



KNOWN TO EVERYONE - LIKED BY ALL

COPYRIGHT BY WOLF BROS. & CO.

MARK TWAIN



Copyright U.S. Postal Service 1995

Riverboats

These steam-powered riverboats operated from 1860 to the 1920s, carrying cargo and passengers to their destinations along America's inland waterways. Until they were eclipsed by railroads, thousands of riverboats, like the ones shown on these stamps, were used throughout the country.

The *Robt. E. Lee* won its fame as the fastest boat on the Mississippi River. Her owner, Captain John W. Cannon, loved his work so much that he was "never happier than when exploiting the good qualities of the *LEE*," according to an article in the *Marine Journal*. The ruggedly built *Far West* usually worked on the Upper Missouri River but gained her claim to fame by transporting survivors of General Custer's 1876 Little Bighorn expedition down the Yellowstone River. *Rebecca Everingham*, a favorite with the traveling public, carried passengers, agricultural products, and finished goods along the Apalachicola and Chattahoochee Rivers until a fire burned her to the waterline in 1884.

The *Sylvan Dell* had a long and varied history on the East Coast, first as a commuter boat, then as a pleasure cruiser, and finally as a commuter boat again. The *Bailey Gatzert* worked a continent away, on the West Coast. It had a single smokestack, an enclosed superstructure, and a covered sternwheel—features preferred by West Coast residents. The history of these five boats offers insight into the vital role riverboat transportation played in the United States.

Issue Date: August 22, 1996

First Day City: Orlando, Florida

Designer: Dean Ellis, Amagansett, New York

Engraver: North American Roto Engravers, Inc.

Typographer: Tom Mann, Warrenton, Virginia

Modeler: Avery-Dennison

Manufacturing Process: Gravure

Colors: Yellow, process red, blue and black; type—red

Image Area: 0.84 x 1.41 inches or
21.34 x 35.81 millimeters

Plate Numbers: "V" followed by five single digits

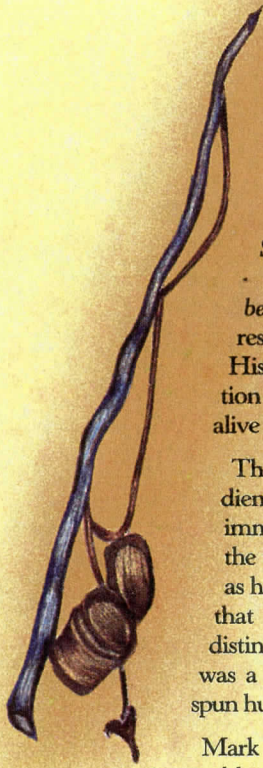
Stamps Per Pane: 20 (self-adhesive) (five designs)

Marginal Markings: © USPS 1995, plate numbers,
plate position diagram, price



FIRST DAY OF ISSUE

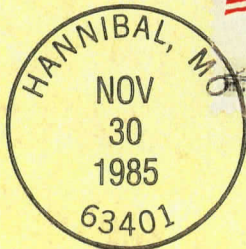




pades spurred his imagination and became the basis for his wonderfully entertaining and enlightening literature. With the publication of the nationally acclaimed story "The Celebrated Jumping Frog of Calaveras County" to such classics as *The Innocents Abroad*, *The Adventures of Tom Sawyer*, *A Connecticut Yankee in King Arthur's Court*, and *The Adventures of Huckleberry Finn*, Mark Twain won international respect as a major American literary figure. His refreshing clarity of style made the action and antics of his characters come vividly alive in the minds and hearts of his readers.

The genius of his wit entertained world audiences not only in literature but also in his immensely popular lecture series. Audiences the world over loved this charming celebrity as he appeared elegantly clad in his white suit that complemented his white mustache and distinctive hair. Truly a native American, he was a serious thinker who retained his homespun humor and down to earth style and manner.

Mark Twain, a noble man of letters who brought joy and laughter to so many devoted admirers predicted his own passing. He reasoned that, "I came in with Halley's Comet in 1835...I expect to go out with it." He did pass away in 1910, the year of the comet's rare appearance.



"Well, I don't see why I oughtn't to like it. Does a boy get a chance to whitewash a fence everyday?"