

THE ARIZONA

PRIDE OF



PHILATELY

JULY – AUG. 2023

VOLUME 66 ISSUE 4

TUCSON STAMP CLUB

MEETINGS: 2ND SATURDAY OF EACH MONTH

TIME: 10 AM BOURSE 11 AM MEETING & PROGRAM

12:00 NOON – 1:00 PM BOURSE

FRATERNAL ORDER OF POLICE LODGE

3445 DODGE BLVD., TUCSON, ARIZONA



JULY MEETING TOPIC: UNITED STATES CIVIL WAR

NOTES FROM THE EDITOR:

Doing the research for the next two meetings topics, I was surprised to see the lack of philatelic web sites, clubs, or societies supporting the U.S. Civil War stamps and postal history. Most of the few available focused on the Confederate items, the best of which is a site created by a long time dealer Patricia A. Kaufmann at:

www.trishkaufmann.com. Both the American Philatelic Society and the American Topical Association did not show any affiliates listed for this interest area.

On the other hand, the topic of Cinderella stamps and related topics yielded a significant number of interesting sites which in turn offered numerous links to additional related research material providing a grand opportunity to “go down the rabbit hole” of wonderful new discoveries!

CINDERELLA STAMPS:

Virtually anything resembling a postage stamp; but not issued for postal purposes by a government postal administration. Named after Cinderella, a folk tale heroine who was treated as an inferior within her family. Cinderella stamps were similarly considered inferior to regular postage stamps.

CALENDAR

JULY: United States Civil War – Stamps & Postal History

AUGUST: Cinderella Stamps

SEPTEMBER: Antarctica

UNITED STATES CIVIL WAR STAMPS INFO:

Abraham Lincoln (Feb. 12, 1801 – Apr. 15, 1865) the 16th President of the U.S.

who was assassinated only six weeks into his second term was the first Republican elected President (1861 – 1865). He is second only to George Washington in the number of times – 74 since 1866 – to be featured on U.S. stamps. He is also the only U.S. President to appear on a U.S. airmail stamp – the 25cent issue of 1960.

Ulysses S. Grant (Apr. 27, 1822 – July 23, 1885) was the 18th President of the U.S.

(1869 – 1877) and he was the youngest elected to that office. He died in 1885 and his portrait first appeared on a U.S. stamp in 1890.

WORLD WIDE WEB

Civil War Philatelic Society: www.civilwarphilatelicsociety.org

Patricia A. Kaufmann: www.trishkaufmann.com

-Excellent “Resources Page” for researchers

Poster Stamp Collectors Club: www.posterstampcc.org

- “About Poster Stamps” : Definition & Collecting Advice
 - History Of Poster Stamps
 - Cinderellas: Terms With Photo Examples
 - Links: Excellent Resource For Related Web Sites

The Ephemera Society Of America: www.ephemerasociety.org

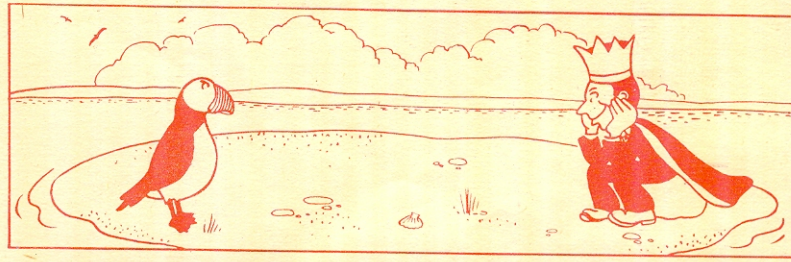
- Ephemera Definition With Types & Photo Examples
- Links: Events; Related Web Sites; Dealer Sites

Global Philatelic Library: www.globalphilatelibrary.org

Lundy
is an English Island
and the largest in
the Bristol Channel.

These "Local Carriage
Labels" cover the cost
of letters and postcards
from the Island to the
Bideford Post office
on the mainland for
their onward delivery.

One Puffin is equal
to one English Penny.



THE STAMPS OF LUNDY ISLAND — and the Strange Story of the Man who Thought he was King of Puffinland



These stamps tell an extraordinary tale — about a man who set himself up as king of an island off the coast of England only a few years ago.



The story begins in 1925, when a wealthy Englishman, Martin Harman, purchased the tiny 3-mile-long island of Lundy off the coast of Devon. Presently Mr. Harman had an idea. "Since I am the owner of this island", he mused, "why shouldn't I also be king?" The idea seemed to make sense to Mr. Harman, and like an intelligent ruler, he proceeded to coin money and issue postage stamps for use by the island's inhabitants. The stamps and coins bore a picture of the puffin, a paunchy bird with a supercilious expression which inhabits the island in great numbers.



At first all went well with the Lilliputian kingdom. But in 1931 the British government got wind of what was going on. By Jove! Chap coining money, don't you know. Bear looking into, and all that, eh what? The result was that "King" Harman was summoned to court, and charged with unlawfully coining money. A justice of the King's Bench fixed a stern eye on the monarch of Lundy.



"Who did you say is sovereign of Lundy?" asked the judge.

"I am!" stated Mr. Harman emphatically. "And as sovereign of Lundy I coined puffins and half-puffins as I have a right to do".



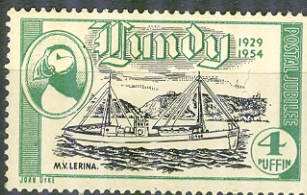
But the court took a dim view of His Majesty King Harman's regal pretensions. King Harman suddenly found that he was an ex-king, was fined 5 pounds, and was ordered to relinquish his royal prerogatives.

Today, Lundy is part of the British Empire, and former King Harman is an ordinary subject of King George. But the stamps remain, a fascinating item for collectors, unique in postal history. For they are the only British stamps ever issued — not by the British government, not by a British dominion, commonwealth, colony or possession — but by a now private citizen, His Exalted Ex-Royal Highness, King Harman I, Ex-Monarch of Puffinland!



LITTLETON STAMP CO., Littleton, N. H.

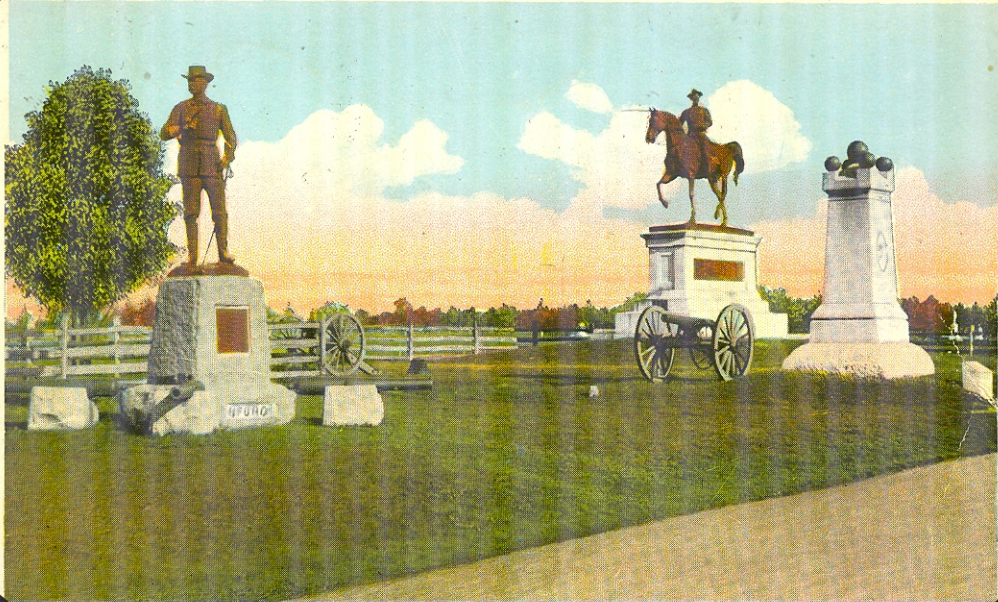
PRINTED IN U. S. A.



Unused Original U.S. Civil War Patriotic Cover
Circa 1860-1865



GEN. BUFORD, GEN. REYNOLDS AND HALL'S 2ND MAINE BATTERY MONUMENTS, GETTYSBURG, PA.



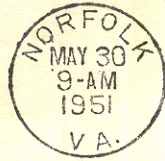
White Border Postcard Posted 1935

United Confederate Veterans Final Reunion Issue

UNITED
CONFEDERATE VETERANS
FINAL ENCAMPMENT
NORFOLK, VA. - MAY 30, 1951



THE LAST MEETING OF LEE AND JACKSON



FIRST DAY OF ISSUE

SC # 998

May 30, 1951

394,235 FDC's

Emancipation Monument: Lincoln and Karel; Slave

1865 - 1940
Commemorating the 75th
Anniversary of the
Adoption of the
Anti-slavery Amendment



FIRST DAY OF ISSUE

Mr. Henry Slater,
4970 Ferndale St.,
Los Angeles, Calif.

SC # 902

Oct. 20, 1940

154,146 FDC's

Crosby Cover - N.Y. World's Fair

United States Civil War Issue

OFFICIAL FIRST DAY OF ISSUE



CIVIL WAR

THE WAR BETWEEN THE STATES
1861 - 1865



SC # 2995

Panel of 20

June 29, 1995

1,954,134 FDC's

OFFICIAL FIRST DAY OF ISSUE

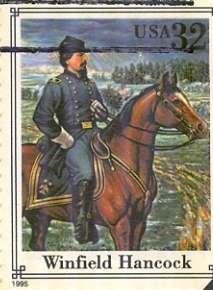


WEST POINT

200th Anniversary
UNITED STATES
MILITARY ACADEMY



FIRST DAY OF ISSUE

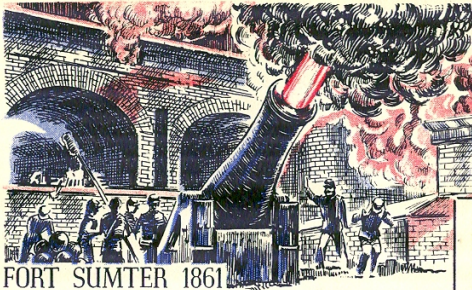


Combination Cover of Civil War Participants
who attended the United States Military Academy

U.S. Military Academy Coat of Arms SC # 3560

Mar. 16, 2002

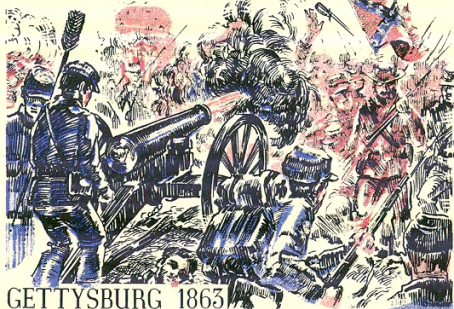
CIVIL WAR Centennial



FORT SUMTER 1861



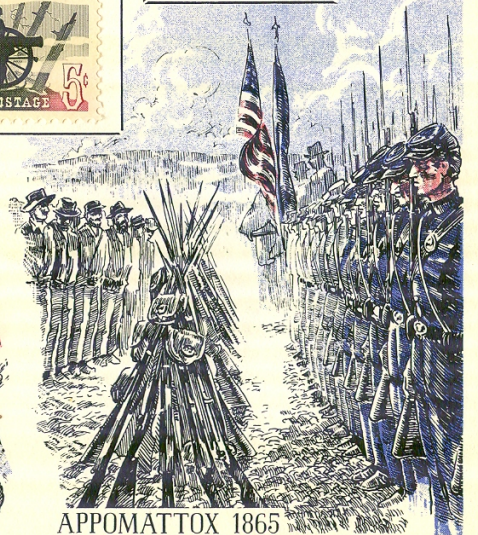
SHILOH 1862



GETTYSBURG 1863



WILDERNESS 1864



APPOMATTOX 1865



FIRST DAY OF ISSUE

KAULBACH ISLAND



BOSTON SHOW 1974
Great Horned Owl

KAULBACH ISLAND



BOSTON SHOW 1974
Blue Jay

KAULBACH ISLAND



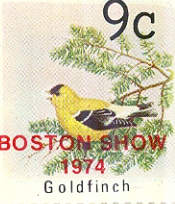
BOSTON SHOW 1974
Kingfisher

KAULBACH ISLAND



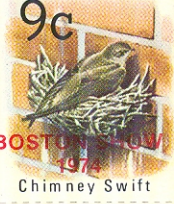
BOSTON SHOW 1974
Osprey

KAULBACH ISLAND



BOSTON SHOW 1974
Goldfinch

KAULBACH ISLAND



BOSTON SHOW 1974
Chimney Swift

KAULBACH ISLAND



BOSTON SHOW 1974
Sandpiper

HONORING THE BOSTON INTERNATIONAL POSTAGE STAMP SHOW, MAY 3-5, 1974
KAULBACH ISLAND LOCAL CARRIAGE SERVICE

Not valid for the carriage of mail by the Canada Post Office. To be used only in the Kaulbach Island Local Carriage Service and may be placed only on the back of envelopes. Use Canadian postal stamps on all mail for posting in Canada.

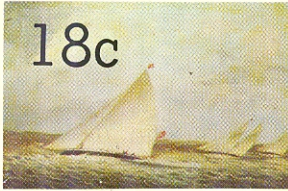
Bird Paintings © 1949,1956 Western Publishing Company, Inc.

KAULBACH ISLAND



Maurice Cullen: The Old Ferry
National Gallery of Canada, Ottawa

KAULBACH ISLAND



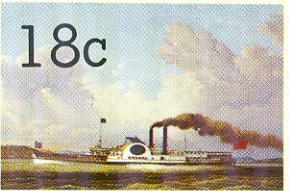
John O'Brien: Yacht Race, Halifax
National Gallery of Canada, Ottawa

KAULBACH ISLAND



Harold Beament: South Side, St. John's
The Canadian War Museum, Ottawa

KAULBACH ISLAND

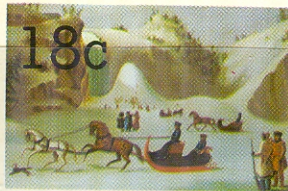


Cornelius Krieghoff: Steamship Quebec
Coll. Dr. W.R. Franks, Toronto

KAULBACH ISLAND LOCAL CARRIAGE SERVICE

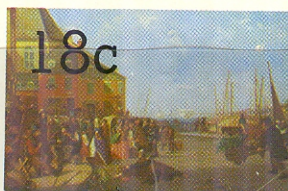
Not valid for the carriage of mail by the Canada Post Office. To be used only in the Kaulbach Island Local Carriage Service and may be placed only on the back of envelopes. Use Canadian postal stamps on all mail for posting in Canada.

KAULBACH ISLAND



Robert Todd: The Ice Cone
National Gallery of Canada, Ottawa

KAULBACH ISLAND



Wm. Raphael: Behind Bonsecours Market
National Gallery of Canada, Ottawa

KAULBACH ISLAND



Thomas Davies: Indian Encampment
National Gallery of Canada, Ottawa

KAULBACH ISLAND



Wm. Berczy: The Woolsey Family
National Gallery of Canada, Ottawa

Denmark 1904 1905



1906



1907



1908



1910



1911



1912



1913



1914



1915



1916



1917



1918



1919



1920



1921



1922



1923



1924



1925



1926



1927



1928



1929



1930



1931



1933



1934



1935



1936



1937



1938



1939





VARIO

Made in Germany

Republic of South Maluku
1950-1963



An unrecognized secessionist republic in Indonesia

World War II Patriotic Cover



Posted with a Cinderella Victory stamp



VARIO

Made in Germany