



**VENTILATION SYSTEMS**  
**WWW.HEX.SA**

## HEX VENTILATION SYSTEMS



- Concealed ceiling ventilation fans, available in various sizes and airflow capacities
- Roof ventilation fans with diverse specifications and specialized functions
- Mechanical ventilation fans, providing continuous 24/7 airflow with no power source required
- Design and supply of air ducts, ducting systems, end closures, and protective covers



**HEX Ventilation & Air Renewal Systems**  
**Engineered for Quality Design and High Performance**



**over 50 Years of Experience in Fan and Ventilation System Manufacturing**

**High-performance ventilation fans for diverse applications, compliant with Gulf standards, backed by a five-year instant replacement warranty.**

**We offer a wide range of essential components and additional accessories for designing and installing ductwork in building ventilation systems.**



Dammam – Kingdom of Saudi Arabia

Info@hex.sa [www.hex.sa](http://www.hex.sa)


Registered Trademark – HEX® 2025 All Rights Reserved



## Table of Contents :

Page	Section
4	Importance of Ventilation and Indoor Air Quality
5	Indoor Air Problems in Buildings
6	Methods to Reduce Indoor Air Pollution
7	Components of the Ventilation System
8	Steps to Select the Appropriate Fan
9	Overview of HEX Technology (Electric Motor)
10	Overview of HEX Technology (Outer Casing)
11	Overview of HEX Technology (Outer Casing) – continued
13	Technical Data (Models and Specifications)
14	Technical Data (Dimensions)
15	HEX FAN Exhaust Fan Model AHS90
16	HEX FAN Exhaust Fan Model AHS120
17	HEX FAN Exhaust Fan Model AHS160
18	HEX FAN Exhaust Fan Model AHS242
19	HEX FAN Exhaust Fan Model AHS360
20	Roof Fans
21	HEX TORNADO 1300 Roof Fan
22	Key Features
23	Technical Specifications – HEX TORNADO 1300
24	Installation Instructions – HEX TORNADO 1300
25	HEX RAPTOR 1300 Roof Fan
26	Technical Specifications – HEX RAPTOR 1300
27	Installation Instructions – HEX RAPTOR 1300
28	Mechanical Ventilation Fans
30	Accessories: HEX PIPE Flexible Duct
32	Accessories: HEX CAP End Closure
33	Accessories: HEX REDUCER Duct Reducer
34	Accessories: HEX FANCOVER Fan Covers

## For Easier Reading: Please Note the Following:

- Texts on red backgrounds highlight the depth and importance of the content
- Main titles appear in white, while subheadings are in yellow
- Model numbers are essential for identifying the correct product
- Data tables include all key values related to each model
- The quotation mark symbol  indicates important hints or notes



# HEX

**VENTILATION SYSTEMS**  
**WWW.HEX.SA**



**WE GIVE YOU UNRESTRICTED ACCESS TO PURE, BREATHABLE AIR**



# HEX



**VENTILATION SYSTEMS**  
**WWW.HEX.SA**

## The Importance of Ventilation and Indoor Air Quality in Buildings

**Everyone understands the importance of renewing indoor air, but few know how to deliver effective solutions — and actually implement them.**

Most buildings today — especially homes — are tightly sealed with aluminum windows and rubber-lined doors to maintain energy efficiency. The majority of residential and commercial buildings feature sealed windows and entryways to minimize heat or cooling loss. However, this often comes at the expense of indoor air quality (IAQ).

This means that staying indoors won't guarantee clean, fresh air — because the concentration of indoor pollutants such as odors, dust, pet dander, and bacteria can be up to five times higher than outdoor levels.



These biological pollutants can pose a risk to both occupants and structural integrity.

Volatile Organic Compounds (VOCs) are carbon-based substances that evaporate easily. These gases are released from building materials, carpets, and furniture — a process known as “off-gassing.” Other common household items that emit VOCs include hair sprays, paints, lacquers, finishes, cleaning solvents, pesticides, and more. Over time, VOCs can trigger noticeable reactions in sensitive individuals.

This is where ventilation **HEX** fans play a vital role — by removing Volatile Organic Compounds (VOCs), they help ensure proper indoor air circulation and effective exchange between indoor and outdoor air.



**Designing an effective ventilation system for buildings is a fundamental requirement — not a luxury**

The role of ventilation fans, simply put, goes beyond eliminating unpleasant odors.

They are designed to remove and expel harmful compounds and pollutants through the process of air circulation and renewal.

This fundamental principle is at the core of HEX ventilation fans — engineered to fulfill secondary objectives by first achieving the primary one.

**4**



Dammam — Kingdom of Saudi Arabia

Info@hex.sa [www.hex.sa](http://www.hex.sa)

Registered Trademark — HEX® 2025 All Rights Reserved



### Indoor Air Problems in Buildings

Everyone understands the importance of breathing clean air — but few realize the serious risks they face when indoor air quality is neglected.

#### • What Are the Problems of Indoor Air Quality at Home?

- Recently, numerous reports have indicated a decline in people's physical well-being. This is largely due to high residential density and the use of construction or interior materials that emit chemical substances — whether in newly built or renovated homes — leading to poor indoor air quality.
- Various symptoms may occur, such as eye/throat irritation, nausea, general discomfort, skin irritation, headaches, dizziness, and breathing difficulties. Furthermore, chemicals like formaldehyde can worsen existing allergic conditions.
- Beware of curtains, sofas, and any other furniture you bring into your home — these items often emit chemical substances into the indoor environment.
- Walls and floors, which occupy the largest surfaces in a space, are among the biggest threats to clean air. Materials such as adhesives used on walls and/or flooring can continue to release harmful chemicals over an extended period of time.



#### Dust Mites

There are about 30 types of mites naturally present in a household. In general, most mite species live without causing any harm to humans. However, there are also biting mites such as Cheyletidae, blood-feeding mites like the House Mite, and a group of Dust Mites that can trigger allergic reactions.



#### Fungal Mold

Mold grows more rapidly when humidity levels rise, and it can find nearly everything it needs — both indoors and outdoors — to thrive. Its impact is not limited to the appearance of the home or the unpleasant odors it creates; mold also poses serious health risks to the human body.

Mold growth increases during the rainy season, and its spores become airborne toward the end of that period. Maintaining proper ventilation and controlling humidity levels play a key role in preventing mold and minimizing its presence — a process made possible through effective indoor air circulation.





**VENTILATION SYSTEMS**

**WWW.HEX.SA**

**Enjoy fresh air**

**Keep your indoor air clean and fresh**



**Reduce indoor air issues and minimize pollution by following these guidelines:**

- **Maintain the required level of air renewal inside the home during both winter and summer**
- **Keep humidity levels low throughout the year**
- **Regularly inspect and maintain the ventilation system to ensure it operates efficiently**
- **Ensure air conditioning systems are clean and replace filters every six months**

**6**



Dammam – Kingdom of Saudi Arabia

Info@hex.sa [www.hex.sa](http://www.hex.sa)

Registered Trademark – HEX® 2025 All Rights Reserved





A typical building ventilation system is composed of exhaust fans sized according to the designated spaces, and ductwork for transferring air from the ventilation areas to the exterior of the building.

- ❖ The ducts are connected at their starting point to the exhaust fan and at their endpoint to the final ventilation outlet on the building's exterior.



- ❖ The design of ventilation outlets varies according to their intended purpose; some are designed for restaurants and factories, while others are intended for residential use.



- ❖ The purposes for which ventilation systems are used include all household applications: kitchens, bathrooms, storage rooms, and fireplaces.



**To design and select the appropriate accessories for a highly efficient home ventilation system, follow these necessary steps:**



**VENTILATION SYSTEMS**  
**WWW.HEX.SA**

## HEX FAN



### HIGH PERFORMANCE - SUPER QUIET SERIES



• **Quiet:** Designed for silent operation without noise



• **Efficient:** Consumes less energy



• **Durable:** Electric motor with a longer lifespan



• **Safe:** Equipped with a safety switch to protect against high current and operating heat.



Electric Motor Specifications:

The performance of the fan depends on the quality and efficiency of the electric motor, which is considered the most critical component in the fan assembly. The electric motor offers several features that ensure effective performance and durability.



The motor core is made of heat-resistant aluminum alloy and equipped with an anti-rust metal rotating shaft.



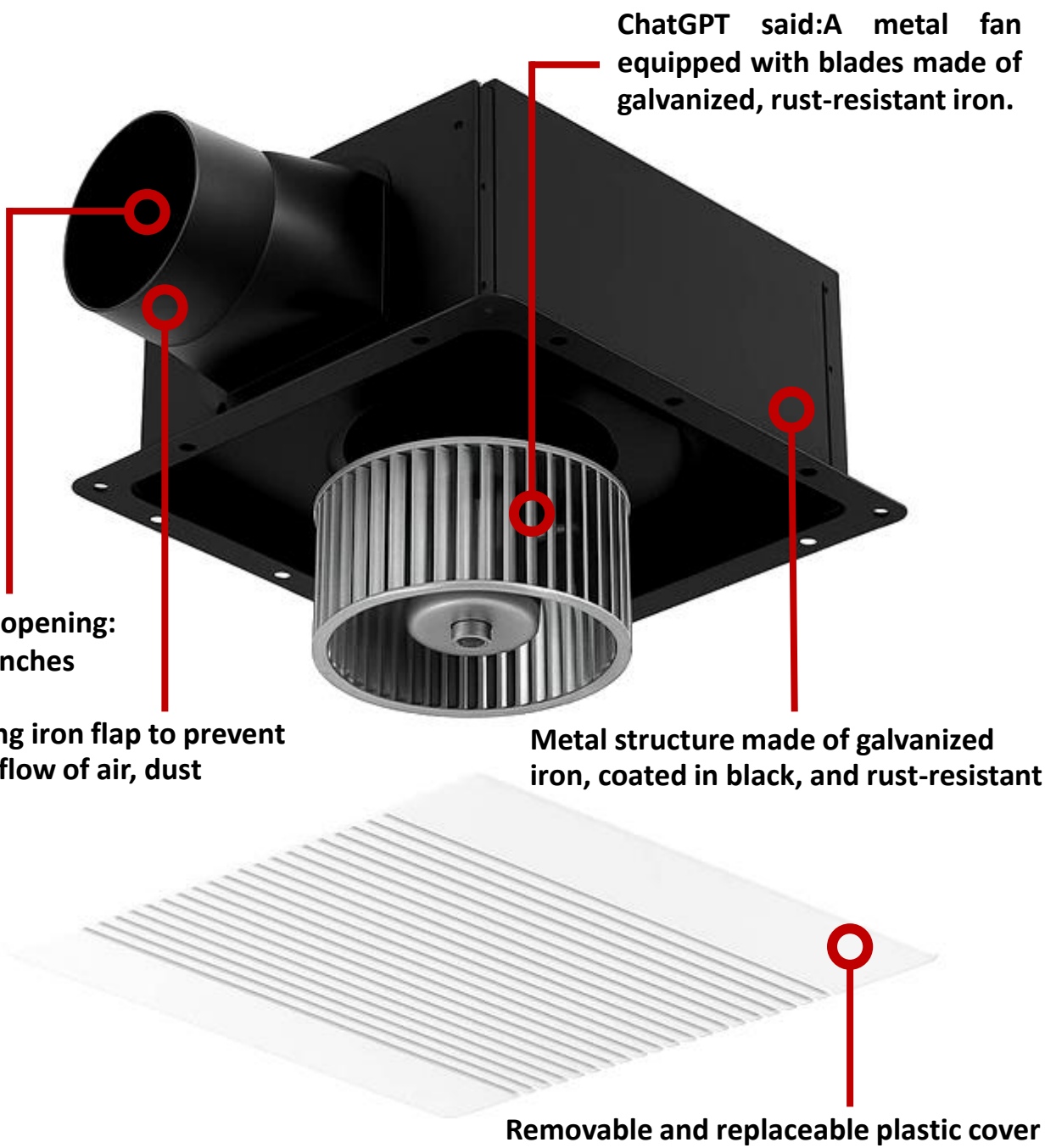
A tightly sealed metal cover to prevent water and moisture from entering

A protection breaker to safeguard the motor winding against sudden current surges or excessive heat, preventing burnout."

High-density copper windings designed to withstand extended hours of high voltage

External structure specifications:

The quality of materials and the design of the external structure and the fan are considered important factors in enhancing the fan's performance, reducing noise, and extending the motor's lifespan. They also play a crucial role in facilitating smooth air circulation without producing noticeable sound or noise.





## External structure specifications:



### External Body:

- Fully metal, coated in black, resistant to rust and oxidation.
- Air outlet equipped with a metal backflow preventer that closes the vent when the fan is turned off.
- The outlet is available in two sizes, 4 or 6 inches, depending on the fan's CFM

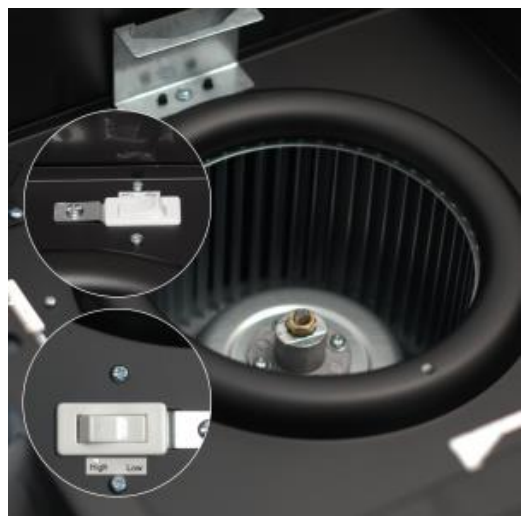


### Fan Blades:

- Centrifugal fan design.
- Fully metal, rust-resistant.
- Sharp blades with a 45-degree tilt angle, designed to circulate air quietly without noise.
- Heat- and weather-resistant, ensuring optimal performance and long-lasting durability.



- The thin metal blades ensure smoother airflow with minimal noise, compared to plastic blades whose performance may degrade over time due to prolonged use and exposure to various stresses. Applicable models: AHS120, AHS160, AHS242, AHS360.



### Two Power Levels:

- Built-in control button between two suction power modes (High and Low).
- Models AHS242 and AHS360 include an adjustable suction power feature, allowing customization based on room size, airflow rate, suitable noise level, and varying conditions.

## External structure specifications:



### Installation Options:

- Equipped with metal end brackets for free-hanging installation in the air or mounting on a gypsum ceiling surface.
- Models AHS90 and AHS120 include rubber straps for installation insulation and to reduce

### Front Panel in Multiple Colors:

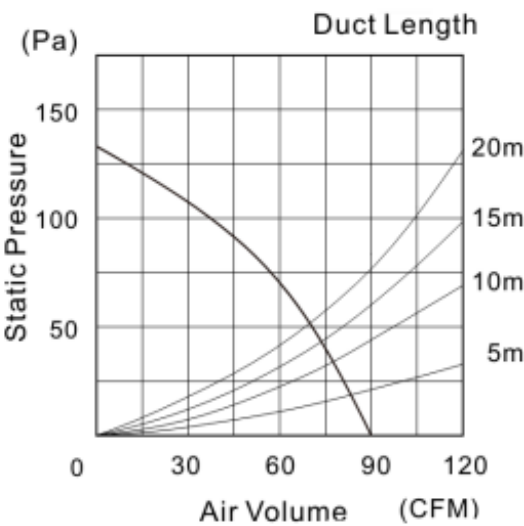
- Available in black and white.
- Cover can be replaced at any time with a new one.
- Different cover designs available to enhance the overall appearance of the fan's front panel.



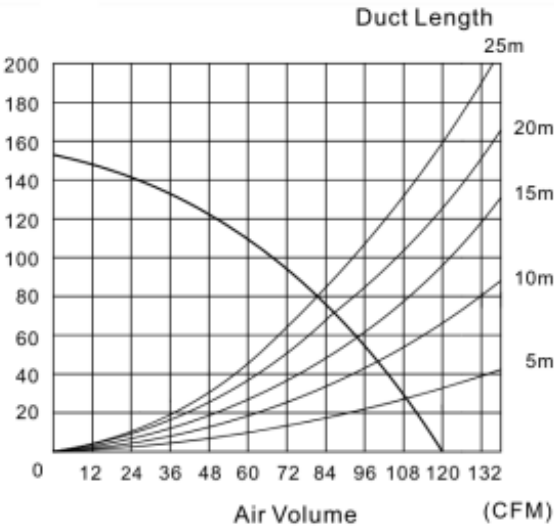


Models and Specifications:

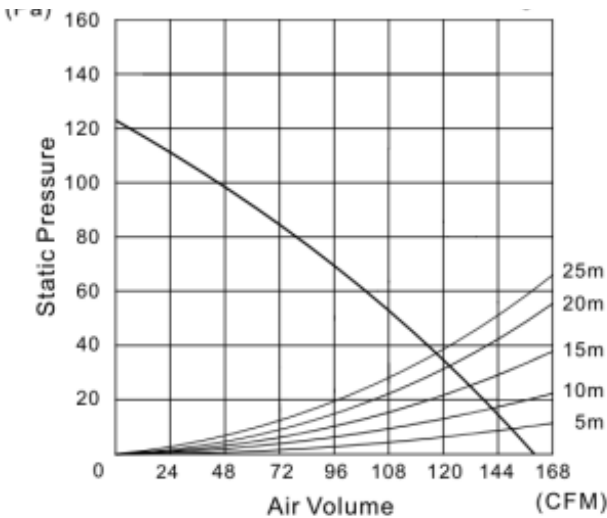
Model	Size mm	Voltage	Freq Hz	Power W	Rotation RPM	Suction CFM	Pressure S.P.Par	Sound level	Power factor
AHS90	100	220	50/60	20	700	92	130	35	0.95
AHS120	100	220	50/60	29	1083	120	153	42	0.99
AHS160	150	220	50/60	32	653	163	124	38	0.90
AHS242	150	220	50/60	52	694	242	180	44	0.99
AHS360	150	220	50/60	115	738	354	213	51	0.71



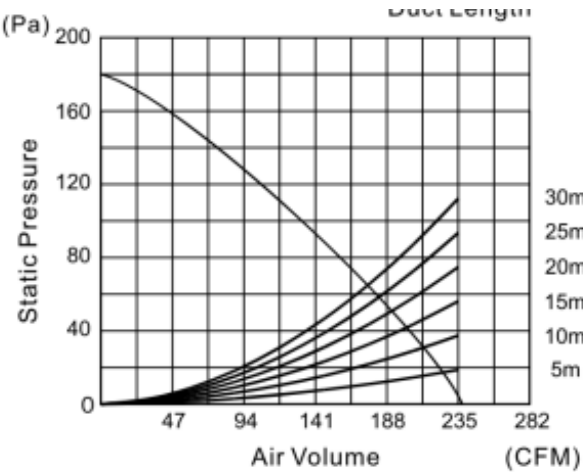
AHS 90



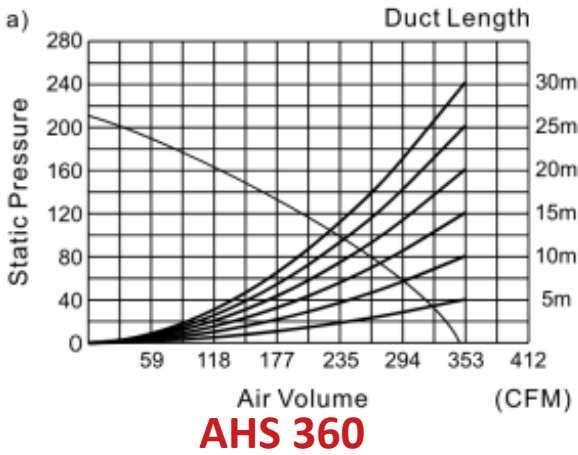
AHS 120



AHS 160



AHS 242



AHS 360

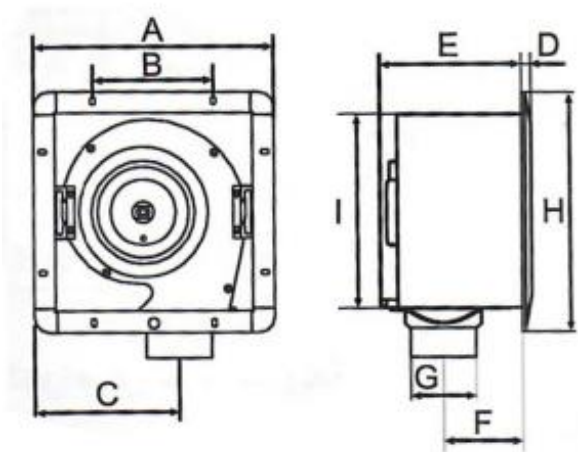
The selection of a suitable fan depends on two factors:

- Determining the appropriate air circulation rate for the intended purpose – for example, kitchens that operate for long hours require a high circulation rate ranging from 10–25 air changes per hour.
- Calculating the suitable suction power for the space – based on the previously outlined steps, an appropriate range is then identified. For instance, if the required suction power is between 95–150, the ideal choice would be a fan with a suction power of 120 (as shown in the table above), since it falls in the middle of the range. This makes it suitable for multiple purposes within the specified range.

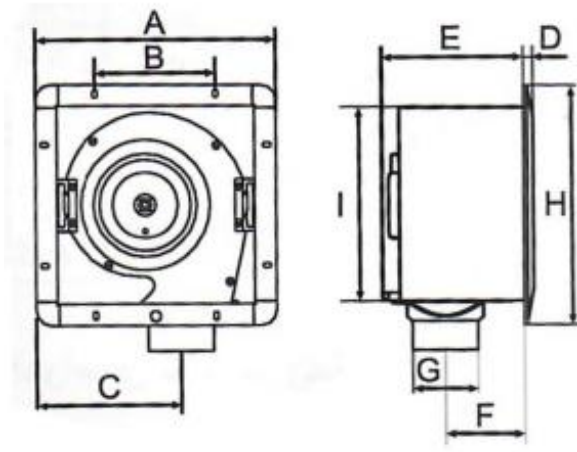
External Fan Housing Dimensions (in millimeters):

Model	Air Duct Diameter	A	B	C	D	E	F	G	H	I
AHS90	100	270	125	145	16	195	235	98	290	230
AHS120	100	267	140	165	16	198	102	98	290	218
AHS160	150	307	140	182	18	225	138	145	330	260
AHS242	150	360	200	232	20	225	146	145	390	310
AHS360	150	424	255	295	20	227	139	145	450	375

AHS 90



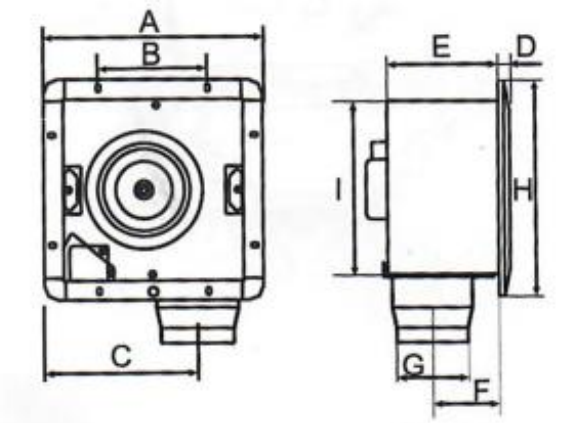
AHS 120



The importance of knowing the dimensions lies in determining the optimal method for preparing the installation site:

Based on selecting the appropriate model according to the specified suction power, it becomes possible to identify the different fan dimensions, determine the diameter of the suction duct, and choose other accessories according to the size.

AHS 160  
AHS 242  
AHS 360



- The table above shows the different dimensions for each fan model
- By knowing the dimensions, one can select the appropriate ventilation duct diameter (4-inch or 6-inch) and choose the suitable accessories (vent outlet dampers, clamps)



# AHS90

HEX

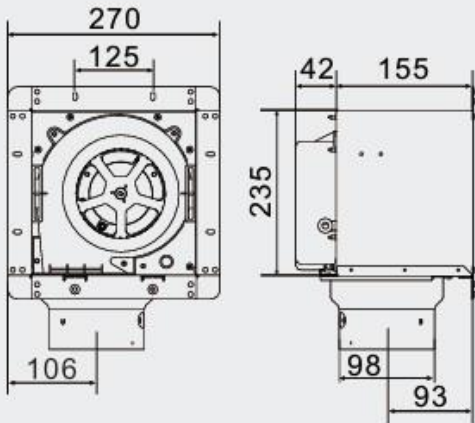


## AHS90 Description

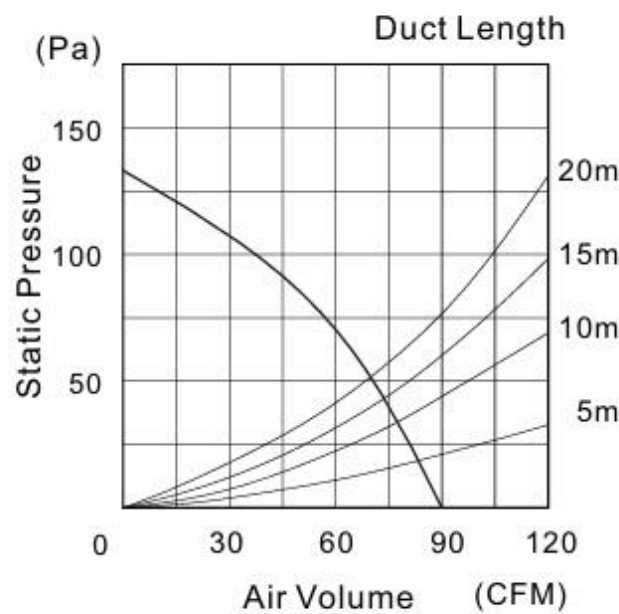
- Centrifugal Fan (Tubular Sirocco).
- Capacitor motor, built-in thermal cut-out, 100% copper.
- Long life Ball bearing.
- High performance & super quiet.
- Metal housing with rust-proof painting.
- Contemporary design of Top quality ABS Front panel.



## DIMENSIONS (mm)



## Performance Data



## SPECIFICATIONS

Model	Size mm	Volt V	Freq Hz	Power W	RPM	Air Volume CFM	S.P. Pa	Noise dB
AHS90	100	220	60	20	740	90	130	36
		220	50	18	750	92	100	35



# AHS120

HEX

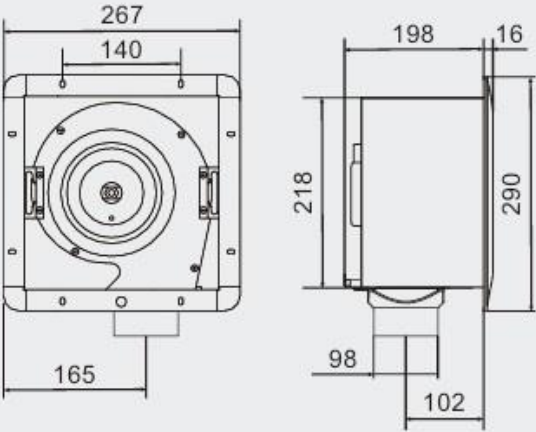


## AHS120 Description

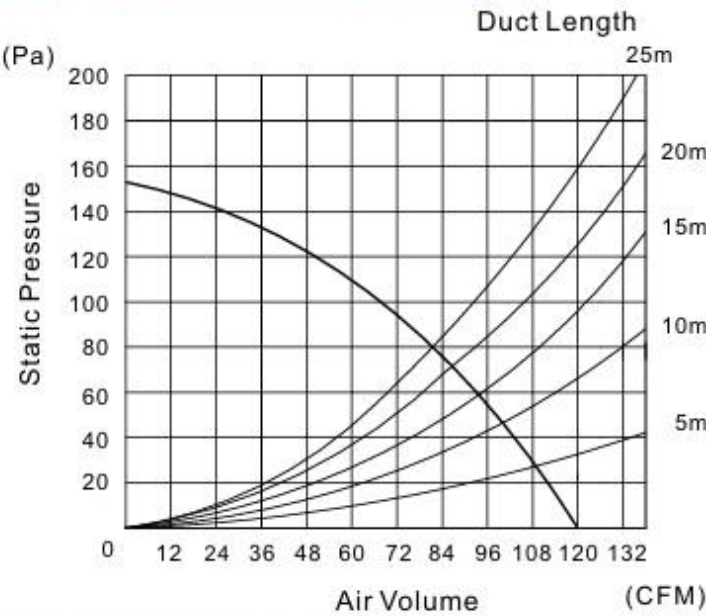
- Centrifugal Fan (Tubular Sirocco).
- Capacitor motor, built-in thermal cut-out, 100% copper.
- Long life Ball bearing.
- High performance & super quiet.
- Metal housing with rust-proof painting and Metal blower for high air volume.
- Contemporary design of Top quality ABS Front panel.



## DIMENSIONS (mm)



## Performance Data



## SPECIFICATIONS

Model	Size mm	Volt V	Freq Hz	Power W	RPM	Air Volume CFM	S.P. Pa	Noise dB
AHS120	100	220	60	29	1083	120	153	42
		220	50	27	1082	120	153	43

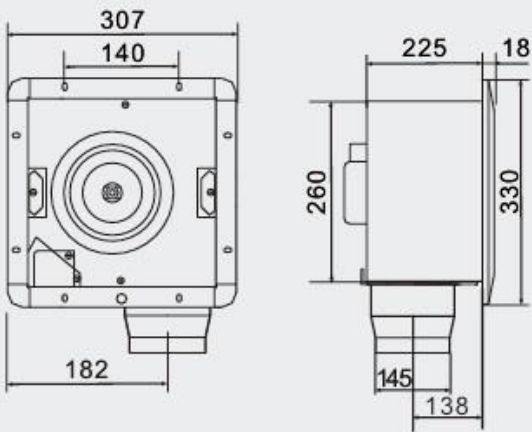


# AHS160

HEX



## DIMENSIONS (mm)

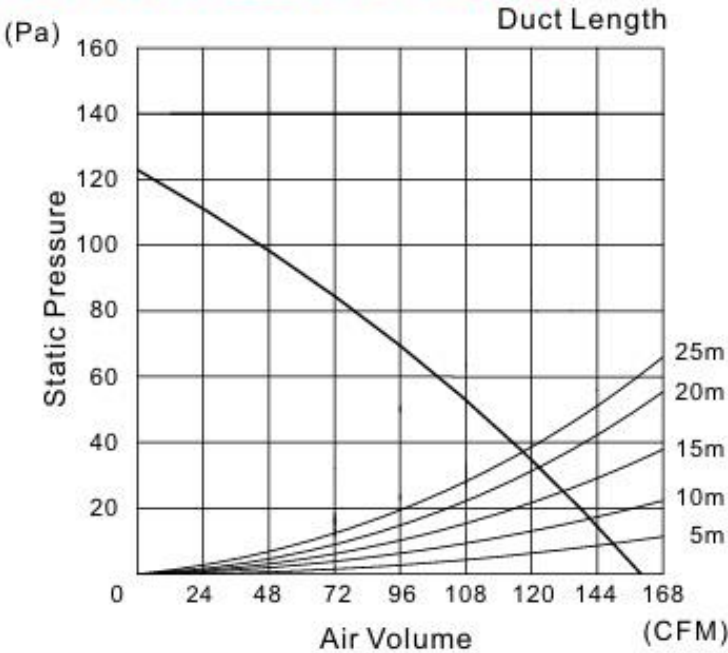


## AHS160 Description

- Centrifugal Fan (Tubular Sirocco).
- Capacitor motor, built-in thermal cut-out, 100% copper.
- Long life Ball bearing.
- High performance & super quiet.
- Metal housing with rust-proof painting and Metal blower for high air volume.
- Contemporary design of Top quality ABS Front panel.



## Performance Data



## SPECIFICATIONS

Model	Size mm	Volt V	Freq Hz	Power W	RPM	Air Volume CFM	S.P. Pa	Noise dB
AHS160	150	220	60	32	642	160	123	38
		220	50	28	653	163	124	39

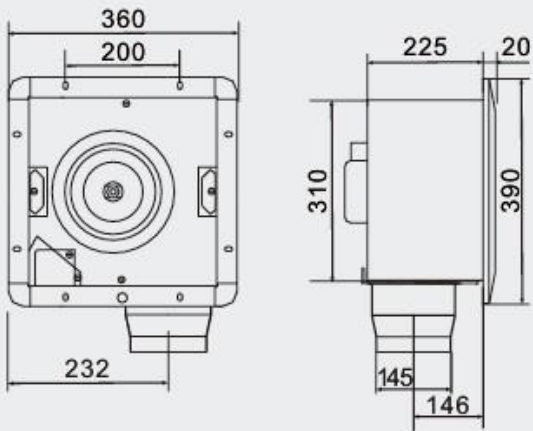


# AHS242

HEX



## DIMENSIONS (mm)

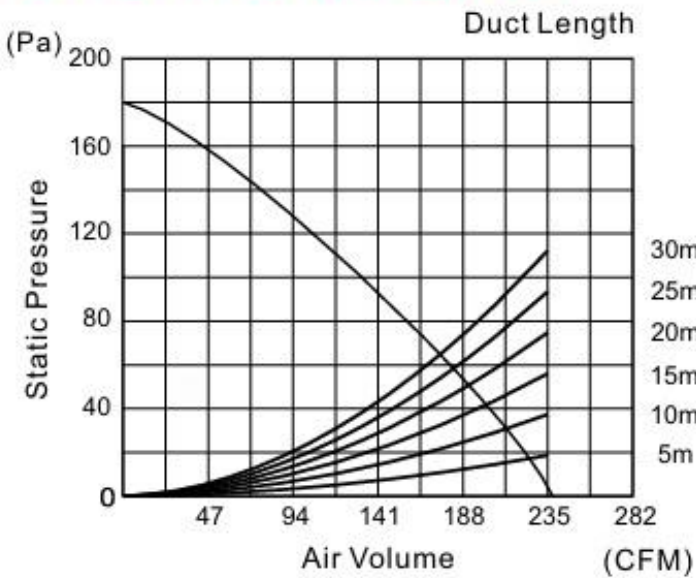


## AHS242 Description

- Centrifugal Fan (Tubular Sirocco).
- Capacitor motor, built-in thermal cut-out, 100% copper.
- Long life Ball bearing.
- High performance & super quiet.
- Metal housing with rust-proof painting and Metal blower for high air volume.
- Contemporary design of Top quality ABS Front panel.



## Performance Data



## SPECIFICATIONS

Model	Size mm	Speed	Volt V	Freq Hz	Power W	RPM	Air Volume CFM	S.P. Pa	Noise dB
AHS242	150	High	220	60	52	694	237	180	44
			220	50	43	708	242	157	45
		Low	220	60	33	530	167	105	40
			220	50	33	550	161	105	41

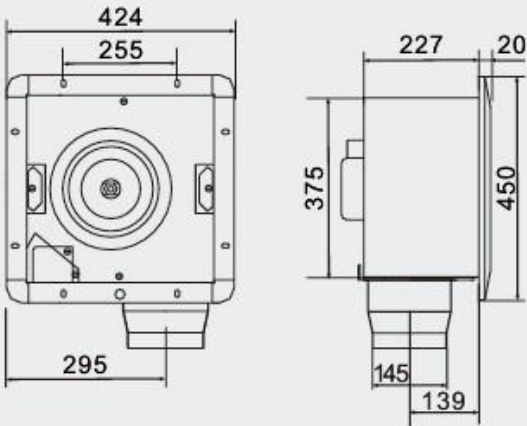


# AHS360

HEX



## DIMENSIONS (mm)

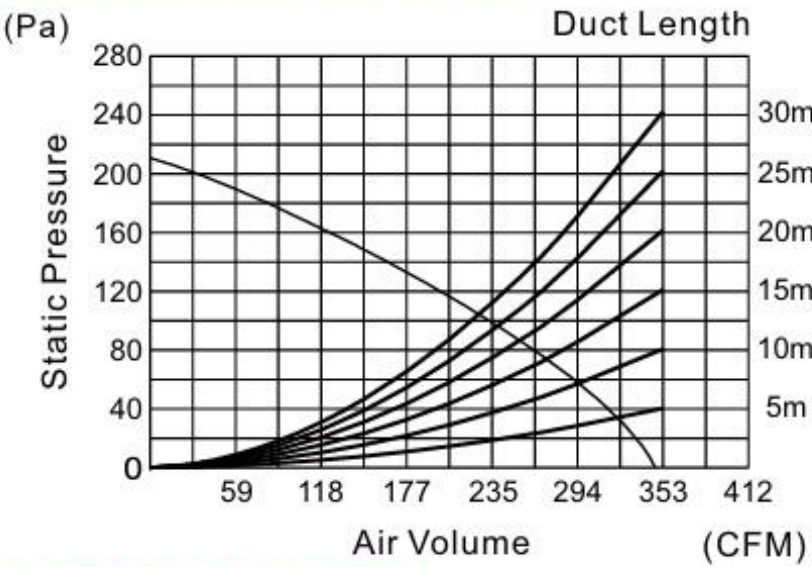


## AHS360 Description

- Centrifugal Fan (Tubular Sirocco).
- Capacitor motor, built-in thermal cut-out, 100% copper.
- Long life Ball bearing.
- High performance & super quiet.
- Metal housing with rust-proof painting and Metal blower for high air volume.
- Contemporary design of Top quality ABS Front panel.



## Performance Data



## SPECIFICATIONS

Model	Size mm	Speed	Volt V	Freq Hz	Power W	RPM	Air Volume CFM	S.P. Pa	Noise dB
AHS360	150	High	220	60	115	738	346	213	51
			220	50	85	742	354	201	52
		Low	220	60	80	630	296	170	47
			220	50	70	650	306	175	48



**VENTILATION SYSTEMS**  
**WWW.HEX.SA**

## HEX ROOF FAN



**HEX TORNADO 1300**



**HEX RAPTOR 1300**



20



Dammam – Kingdom of Saudi Arabia  
Info@hex.sa    www.hex.sa  
Registered Trademark – HEX® 2025 All Rights Reserved



**VENTILATION SYSTEMS**

**WWW.HEX.SA**

The HEX TORNADO 1300 roof fans are designed to provide efficient and reliable operation for residential and commercial ventilation purposes.

- Our products are specifically designed to meet the ventilation needs of kitchens and restaurants.
- All our fans undergo rigorous quality testing to ensure smooth, problem-free operation from the start.
- Our rooftop fans feature industry-leading innovative designs, delivering superior performance and
- maximizing the efficiency of your ventilation system.
- We incorporate the latest available technologies to provide you with advanced and reliable ventilation solutions.

❖ **Operation is tested prior to packaging.**

❖ **A typical application includes the following:**



**Industrial Exhaust**



**Smoke Fan**



**Storage Warehouses**



**Restaurant Oil**

### **Capabilities & Services:**

- **Fan design and manufacturing**
- **Fully performance-tested products**
- **Serving local and international markets through manufactured products, OEM supply, and after-sales services**







**VENTILATION SYSTEMS**

**WWW.HEX.SA**

**The HEX TORNADO 1300 roof fans are designed to provide efficient and reliable operation for residential and commercial ventilation purposes.**

- **HEX TORNADO 1300**
- Constructed from aluminum alloys, laser-cut for high-precision manufacturing
- Base made from aluminum alloys
- Motor cavity cover made of aluminum, hand-operable for easy daily maintenance and cleaning
- Internal fan manufactured from aluminum alloys
- Motor shaft balance testing fully compliant with G4.0 ISO1940 standards

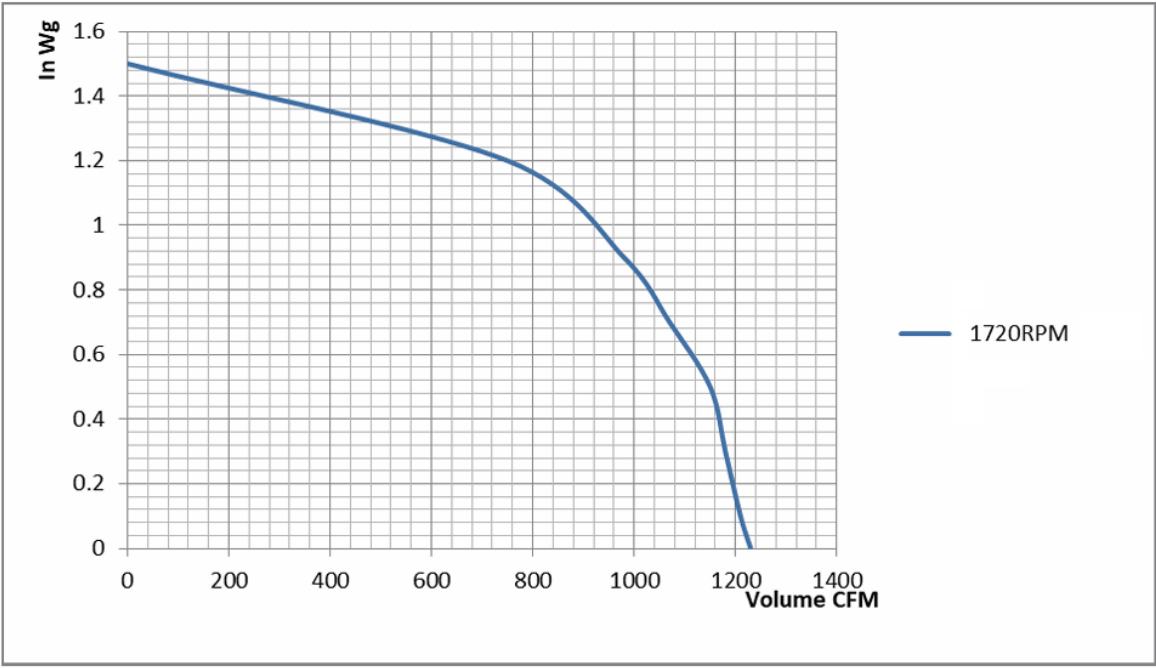


### **Key Features of HEX TORNADO 1300**

- Can be used as a smoke exhaust fan
- Operates reliably in high-temperature environments
- Fully molded structure with aluminum alloy housing
- Equipped with the most advanced circulation motors in its class
- Direct-drive operation
- Certified IEC60335 compliance
- Quality management system compliant with ISO9001:2018
- Maximum continuous operating temperature: 160°C
- Peak operating temperature: up to 300°C



Model	HEX TORNADO1300
Extraction Capacity	1240CFM
Motor Capacity	0.75 HP
Rated Power	550 W
Operating Current	220-240V 50/60Hz
Fan RPM	1450 RPM
Fan Diameter	11INCH
Pressure	313 PA
Base Dimension	51×51 CM
Duct Dimensions	17×17CM OR Flexible Hose 6 Inch



### Application Description

1. The fan is primarily used for extracting air contaminated with fumes and oils.
2. If installed in an isolation or sanitation area, continuous operation is required.
3. The fan can be installed in outdoor or humid environments.
4. All fans are powered by motors meeting international standards, single-phase 220–240 V, 50/60 Hz.

### Operation:

Before Operation, Please Ensure:

1. The actual maximum current does not exceed the national standard indicator by more than +5%.
2. Voltage fluctuations are within +6% to +10%.
3. No abnormal noise is produced during operation.
4. The motor rotation direction matches the indicated direction.

### Troubleshooting:

Troubleshooting:

1. Ensure the fan rotates freely.
2. Verify that power is reaching the motor.
3. Check the protective circuit breaker integrated in the main junction box.
4. Inspect the current capacitor; replace it immediately if the fan fails to operate.
5. Contact the distributor if the fan still does not operate.

### Installation:

1. Installation must follow the airflow direction marking.
2. Ensure proper installation and that the outlet is free from any debris that may obstruct airflow.
3. Installation should allow for easy maintenance access.
4. Electrical installation must be performed by a qualified technician, with proper grounding.
5. Power supply should be connected through a protective circuit breaker.
6. Ensure the ventilation duct is of the appropriate size: 17×17 cm or 6-inch flexible duct.

### Maintenance:

Before repairing or performing maintenance on the fan, please ensure:

1. The fan is completely stopped and not operating under load (e.g., jammed due to accumulated oils).
2. The fan should be cleaned at least once a year to maintain its functionality and prevent damage.
3. The rotating shaft requires no maintenance except in case of unexpected faults.
4. When cleaning the fan, do not use high-pressure pumps or strong solvents.
5. Ensure the fan operates without any abnormal noise after maintenance.

### Warranty:

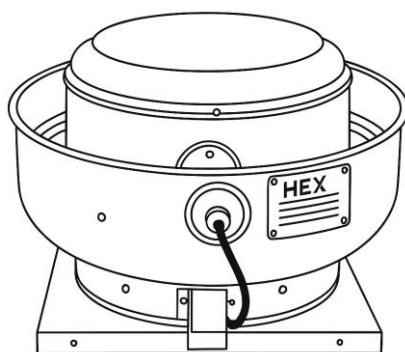
The warranty is valid only if the guidelines in this manual are followed.



**HEX RAPTOR 1300 rooftop fans are designed to provide efficient and reliable operation for both residential and commercial ventilation purposes.**

### HEX RAPTOR 1300

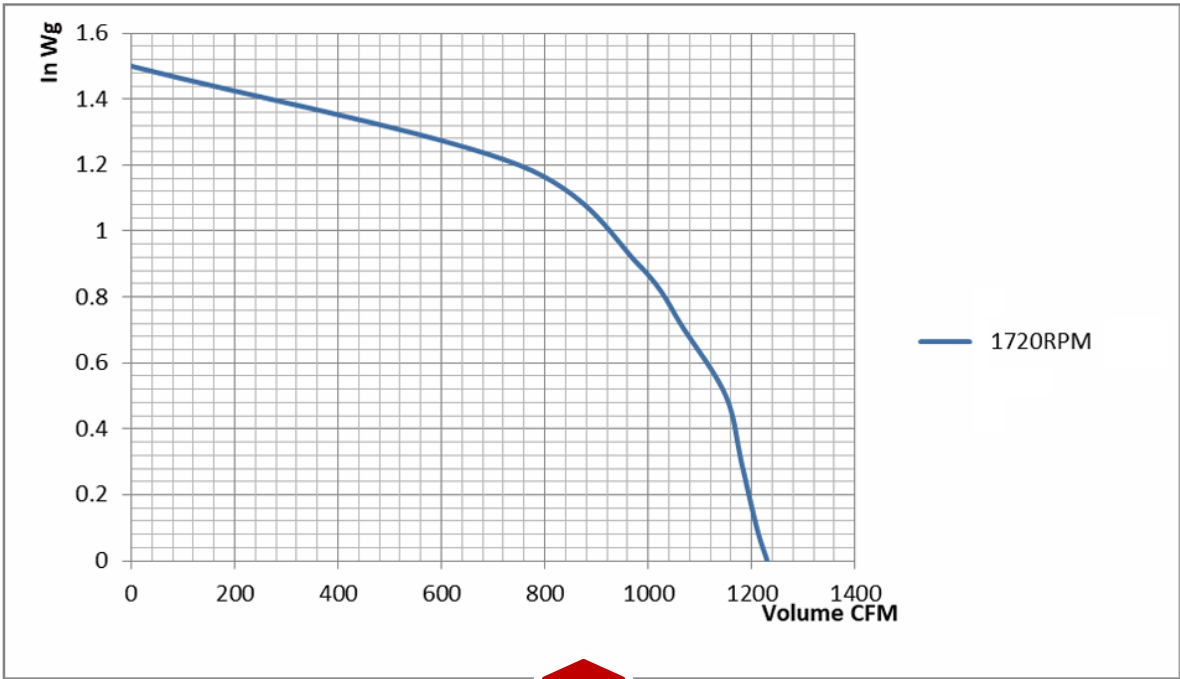
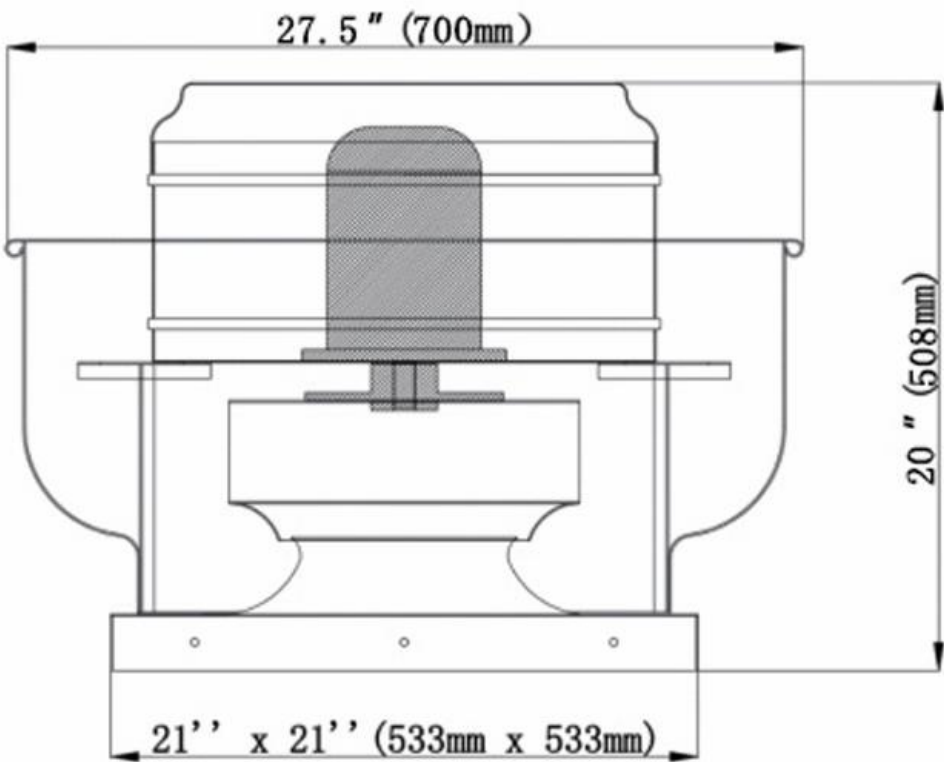
- Constructed from aluminum alloys, laser-cut for high-precision manufacturing
- Base made from aluminum alloys
- Motor cavity cover made of galvanized metal, hand-operable for easy daily maintenance and cleaning
- Internal fan manufactured from aluminum alloys
- Motor shaft balance testing fully compliant with G4.0 ISO1940 standards and requirements



### Key Features of HEX RAPTOR 1300

- Can be used as a smoke exhaust fan
- Reliable operation in high-temperature environments
- Fully molded construction with an aluminum alloy housing
- Equipped with the most advanced circulation motors in its class
- Direct-drive operation
- Certified compliance with IEC60335
- Quality management standard: ISO9001:2018
- Maximum continuous operating temperature: 160 °C
- Peak operating temperature: up to 300 °C

Model	RAPTOR1300
Extraction Capacity	1240CFM
Motor Capacity	0.25 HP
Rated Power	180 W
Operating Current	220-240V 50/60Hz
Fan RPM	1720 RPM
Fan Diameter	11 INCH
Pressure	375 PA
Base Dimension	53x53 CM
Duct Dimensions	20x20 CM OR Flexible Hose 8 Inch O





### Application Description:

1. The fan is primarily used for extracting air contaminated with fumes and oils.
2. If installed in an isolation or sanitation area, continuous operation is required.
3. The fan can be installed in outdoor or humid environments when connected to an oil drainage system.
4. All fans are powered by motors meeting international standards, single-phase 220–240 V, 50/60 Hz.
5. Suitable for installation in various locations (horizontally on a wall or vertically on a rooftop).

### Maintenance:

#### Maintenance Instructions:

1. Before repairing or performing maintenance on the fan, ensure it is completely stopped and not operating under load (e.g., jammed due to accumulated oils).
2. The fan should be cleaned at least once a year to maintain functionality and prevent damage.
3. The rotating shaft requires no maintenance except in the case of unexpected faults.
4. When cleaning the fan, do not use high-pressure pumps or strong solvents.
5. Ensure the fan operates without any abnormal noise after maintenance.

### Troubleshooting:

1. Ensure the fan rotates freely.
2. Verify that power is reaching the motor.
3. Check the protective circuit breaker integrated in the main junction box.
4. Inspect the current capacitor; replace it immediately if the fan fails to operate.
5. Contact the distributor if the fan still does not operate.

### Installation :

#### Installation Guidelines:

1. Installation must follow the airflow direction marking.
2. Connect the fan to an oil drainage system.
3. Ensure proper installation and confirm that the outlet is free from any debris obstructing airflow.
4. Installation should allow easy access for maintenance.
5. Electrical installation must be performed by a qualified technician, ensuring proper grounding.
6. Power supply should be connected through a protective circuit breaker.
7. Use appropriately sized air ducts: 20×20 cm or 8-inch flexible duct.

### Operation:

#### Before Operation, Please Ensure:

1. The actual maximum current does not exceed the national standard indicator by more than +5%.
2. Voltage fluctuations are within +6% to +10%.
3. No abnormal noise is produced during operation.
4. The motor rotation direction matches the indicated direction.

### Warranty:

The warranty is valid only if the guidelines in this manual are followed.



## HEX MECHANICAL VENTILATION FANS **AHS3043**



**Enjoy continuous ventilation throughout the day without consuming extra electricity with our mechanically driven air circulation fans. This heavy-duty fan is designed for optimal air circulation, ensuring long-term use. The fan blades are made of high-quality stainless steel and feature a unique design for maximum airflow. It comes with an easy-to-install mounting bracket and operates quietly, making it ideal for any application.**



- **Made of rust-resistant stainless steel**
- **Blades designed for optimal wind-driven movement**
- **Versatile applications**
- **Easy and quick installation**
- **Requires no accessories or power source**
- **Safe and energy-free, suitable for continuous operation**
- **High ventilation efficiency throughout the day**

## HEX MECHANICAL VENTILATION FANS **AHS3043**

### Specifications:

- **Color: Steel**
- **Base Size: 43 × 43 cm**
- **Fan Opening Size: 30 cm**

### Features:

- **Ideal solution for a wide range of ventilation needs**
- **Reduces water tank temperatures**
- **Corrosion- and rust-resistant**
- **No electricity or maintenance required**
- **Prevents the entry of rain and dust**

### Applications:

- **Fireplace chimneys**
- **Water tank ventilation**
- **Stairwell ventilation**
- **Ventilation of enclosed light wells**
- **Suitable for any enclosed areas requiring ventilation**

### Country of Origin:

**China**

### Warranty:

**5-year performance warranty with immediate replacement**





## HEX FAN VENTILATION DUCTS



## ACCESSORIES



To design and implement the appropriate ventilation system, you need to plan the ventilation ducts. In this section, you will find everything you need to accomplish that.

- **Ventilation Ducts (Flexible Tubes)**
- **End Caps (Metal Covers)**
- **Reducer Adapters (for connecting ducts)**
- **Decorative Interior Fan Covers**



30



Dammam – Kingdom of Saudi Arabia

Info@hex.sa [www.hex.sa](http://www.hex.sa)

Registered Trademark – HEX® 2025 All Rights Reserved



## HEX PIPE

### High-Durability Flexible Duct

#### Specifications:

- Constructed with two layers of plastic
- Lined with an internal aluminum layer
- Reinforced with a 1 mm thick metal wire
- Length: 10 meters when fully extended
- Can be cut and used in multiple locations
- Available in two sizes: 4-inch and 6-inch



#### Features:

- Flexible and easy to extend and install
- Environmentally friendly with no pollutants
- Relatively heavy, preventing vibration and noise
- Durable, corrosion-, wear-, and leak-resistant
- The internal aluminum layer provides excellent moisture insulation and resistance to high temperatures. plastic layers encasing it, combined with the internal aluminum lining.
- Long service life ensured by the dual

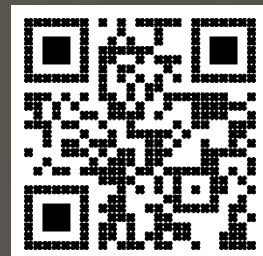
Outer Material  
(PVC+PET)  
المواد الخارجية

Inner material  
(Aluminum foil)  
المادة الداخلية من الألمنيوم



heat resistant High efficiency Air tight High flexibility Cuttable Heavy Duty

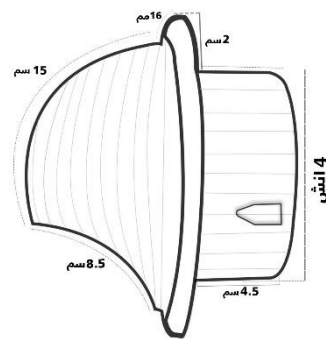
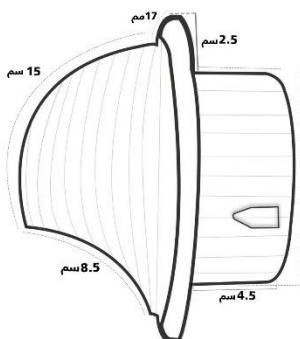
- HEX PIPE AHS150-150mm
- HEX PIPE AHS100-100mm



## HEX CAP



## Ventilation Outlet Caps



### Specifications:

- Made of 0.5 mm thick 304 stainless steel, rust-resistant
- Vent outlet with metal mesh
- Equipped with downward-facing louvers
- Features a hollow dome cover open at the bottom for added protection against water, dust, insects, and birds
- Available in two sizes: 4-inch and 6-inch
- AHS100 – 100 mm
- AHS150 – 150 mm
- Available in four colors: Stainless Steel, White, Beige, Black
- Triple-layer oven-baked thermal coating

### Features:

- Stainless steel construction, resistant to moisture, weather conditions, rust, and discoloration
- Equipped with a dome cover open at the bottom to protect against dust, rainwater, insects, and birds



**AHS150-G**



**AHS150-W**



**AHS150-B**



**AHS150-BL**



**AHS100-S**



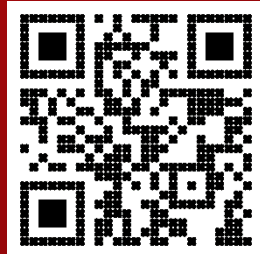
**AHS100-W**



**AHS100-B**



**AHS100-BL**



**DATA SHEET**

## HEX REDUCER



**6 Inch**



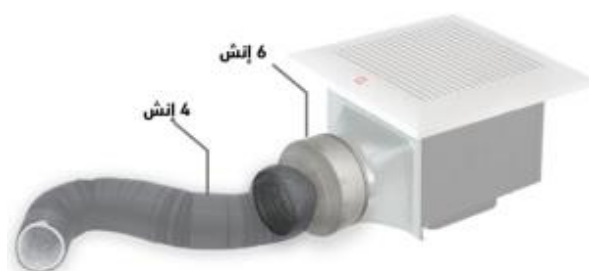
**4 Inch**

### 6-inch to 4-inch Duct Reducer

- Made of galvanized steel, rust-resistant
- Designed for bathroom and kitchen exhaust fans, HVAC systems, compact fans, kitchen hoods, clothes dryers, hydroponics, and kitchen applications
- Maintains airflow efficiency by creating a connection between two different duct openings
- Can be used as a duct reducer or increaser when connecting flexible or rigid ducts to ventilation fans, from 6-inch to 4-inch or vice versa
- Easy installation: simply place it between the two ducts; the air duct reducer is quick and easy to install



**Used to connect ducts to the exhaust fan outlet when there is a size difference between the duct and the fan inlet or ventilation outlet.**





### HEX FANCOVER

HEX Hidden Exhaust Fan Outer Cover made of ABS with an elegant decorative front, resistant to discoloration and yellowing. Compatible with any type of fan.

❑ **Model: AHS29GB**

- Description: Modern Black Edition
- Color: Black
- Size: 29 × 29 cm for 24 × 24 cm fans, Model AHS120

❑ **Model: AHS33GB**

- Description: Modern Black Edition
- Color: Black
- Size: 33 × 33 cm for 27 × 27 cm fans, Model AHS160

❑ **Model: AHS29GW**

- Description: Modern White
- Color: White
- Size: 29 × 29 cm for 24 × 24 cm fans, Model AHS120

❑ **Model: AHS33GW**

- Description: Modern White
- Color: White
- Size: 33 × 33 cm for 27 × 27 cm fans, Model AHS160

❑ **Model: AHS29GW**

- Description: Modern White
- Color: White
- Size: 29 × 29 cm for 24 × 24 cm fans, Model AHS120

❑ **Model: AHS33GW**

- Description: Modern White
- Color: White
- Size: 33 × 33 cm for 27 × 27 cm fans, Model AHS160

❑ **Model: AHS29B**

- Description: Classic Black
- Color: Black
- Size: 29 × 29 cm for 24 × 24 cm fans, Model AHS120

❑ **Model: AHS33B**

- Description: Classic Black
- Color: Black
- Size: 33 × 33 cm for 27 × 27 cm fans, Model AHS160

❑ **Model: AHS45B**

- Description: Classic Black
- Color: Black
- Size: 45 × 45 cm for 38 × 38 cm fans, Model AHS360





# HEX

**[Info@hex.sa](mailto:Info@hex.sa) [www.hex.sa](http://www.hex.sa)**

**Dammam –Kingdom of Saudi Arabia  
Registered Trademark –All Rights Reserved HEX 2026**



**Certification:**

