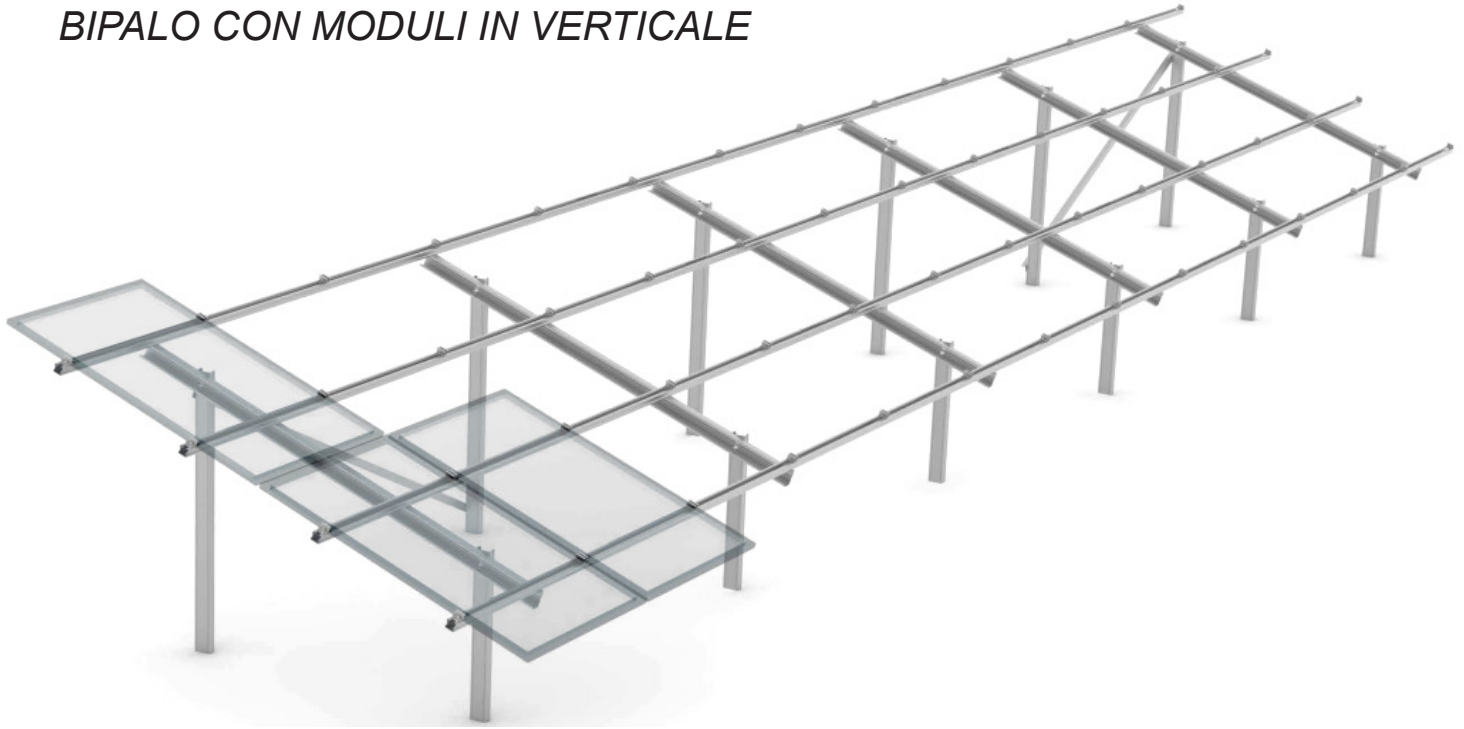


# STEEL GROUND MOUNTING SYSTEM

## BIPALO CON MODULI IN VERTICALE

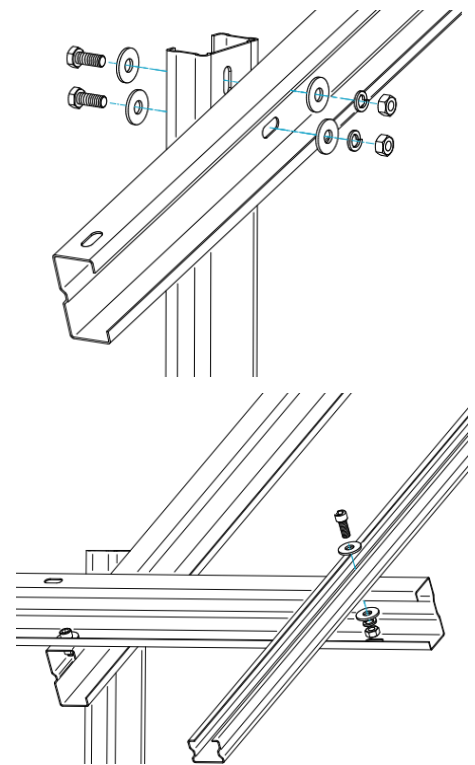
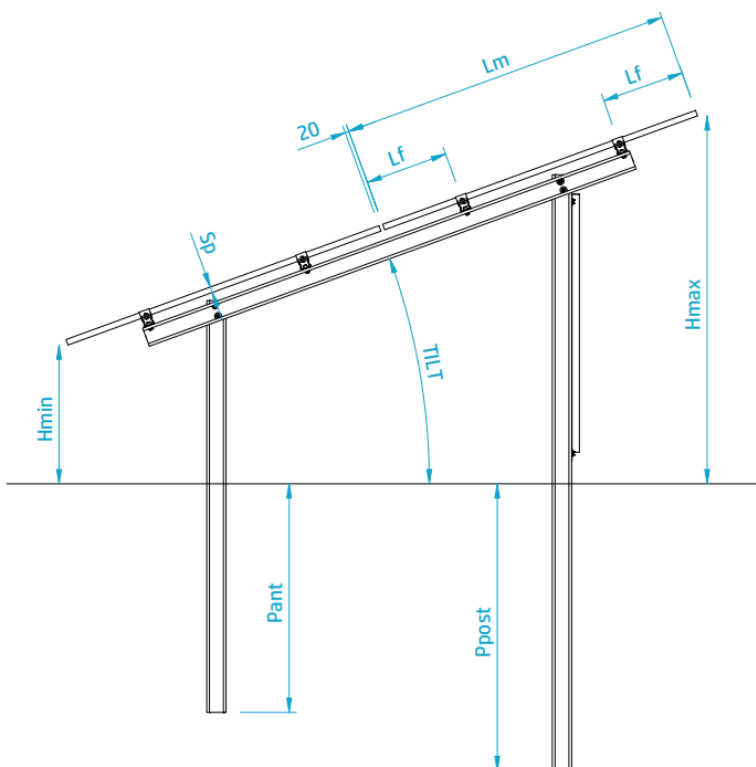


La struttura a terra bipalo per moduli fotovoltaici utilizza acciaio placcato a caldo in lega di magnesio e alluminio (acciaio MAC) come materia prima per la struttura principale, rendendo il sistema altamente durevole, ad alta resistenza e stabile. Il trattamento Mg-Al-Zn garantisce un'elevata resistenza alla corrosione.

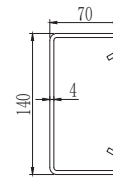
La struttura si adatta alle esigenze del cliente e del terreno, nel quale verrà installato, garantendo così un elevato grado di personalizzazione del progetto finale.

### Technical Parameter

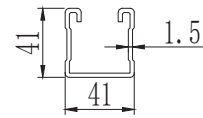
Installazione	Ground
Tilt Angle	0° - 45°
Wind Load	60 m/s
Snow Load	1,6 KN/m <sup>2</sup>
Module orientation	Portrait
Module dimension	Qualsiasi
Profondità di infissione	160 cm
Altezza palo	A richiesta



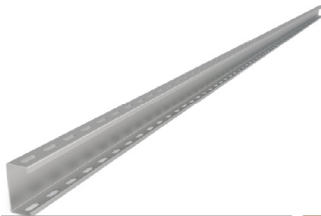
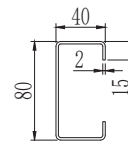
Pillar



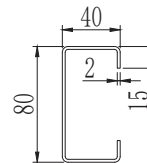
Back strengthen bar



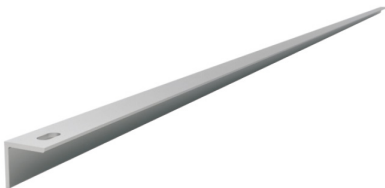
Beam  
MAC Steel/  
Hot-dip Galvanized Steel 0235 optional Length  
can be customized



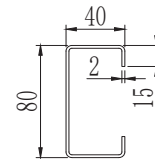
Rail  
MAC Steel/  
Hot-dip Galvanized Steel 0235 optional  
Length can be customized



Base Seat  
MAC Steel/  
Hot-dip Galvanized Steel 0235 optional



Diagonal Bar  
MAC Steel  
Length can be customized



Middle Clamp Kit 30/35/40mm  
AL6005-T5&SUS304



End Clamp Kit 30/35/40mm  
AL6005-T5&SUS304