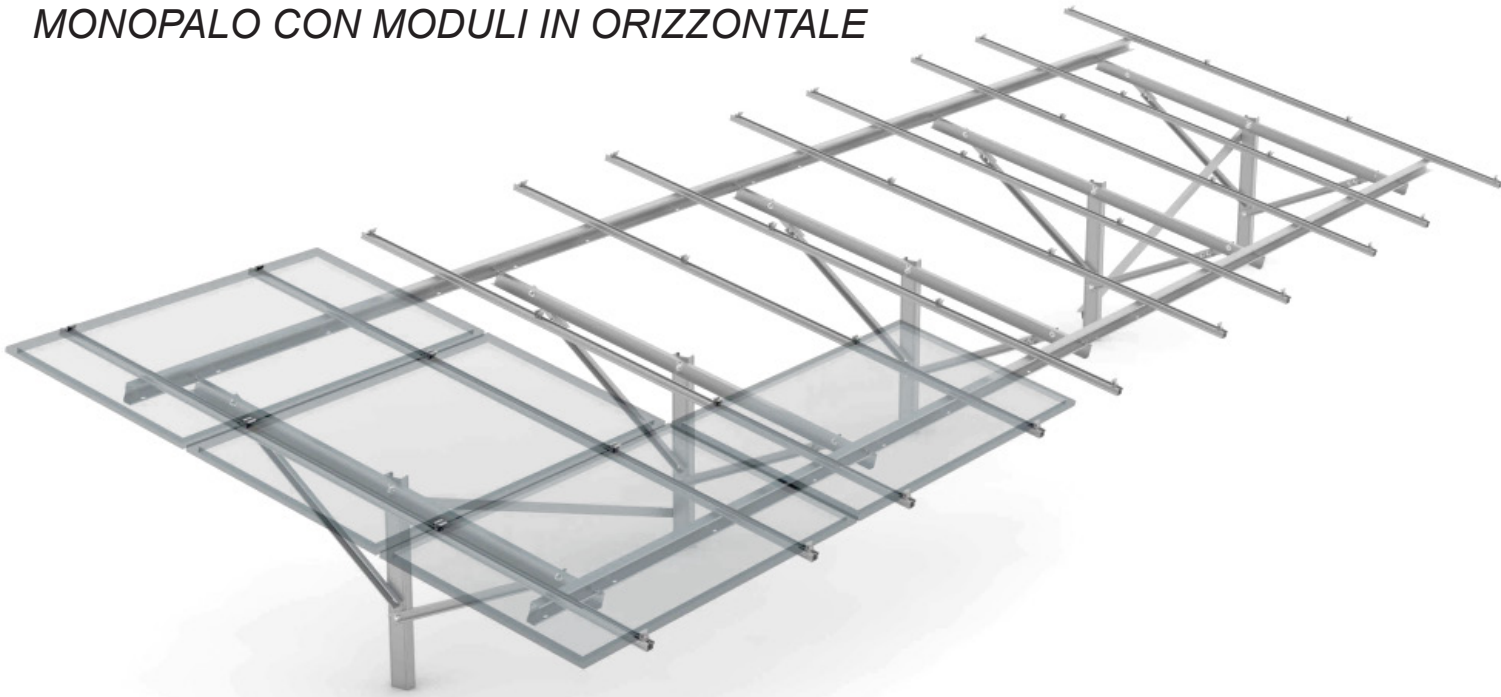


STEEL GROUND MOUNTING SYSTEM

MONOPALO CON MODULI IN ORIZZONTALE

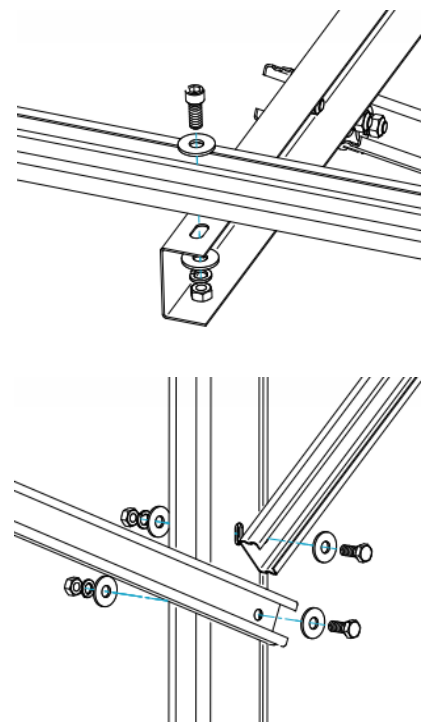
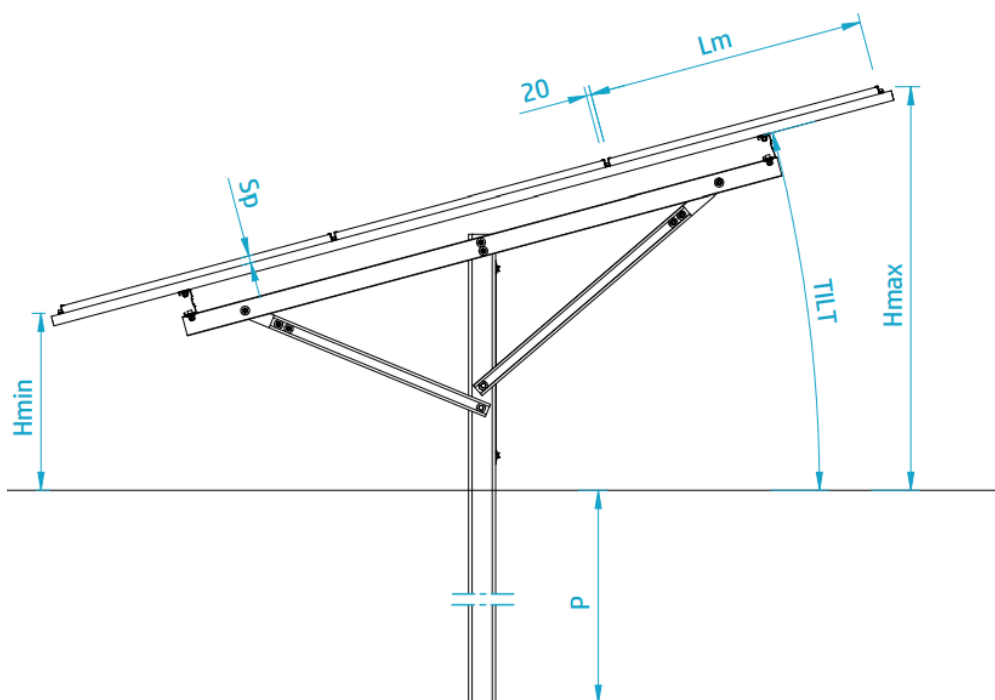


La struttura a terra monopalo per moduli fotovoltaici utilizza acciaio placcato a caldo in lega di magnesio e alluminio (acciaio MAC) come materia prima per la struttura principale, rendendo il sistema altamente durevole, ad alta resistenza e stabile. Il trattamento Mg-Al-Zn garantisce un'elevata resistenza alla corrosione.

La struttura si adatta alle esigenze del cliente e del terreno, nel quale verrà installato, garantendo così un elevato grado di personalizzazione del progetto finale.

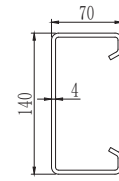
Technical Parameter

Installation	Ground or ballast
Tilt Angle	0° - 45°
Wind Load	60 m/s
Snow Load	1,6 KN/m ²
Module orientation	Landscape
Module dimension	Various
Depth of penetration	160 cm
Pole height	On request

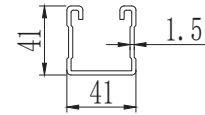


COMPONENTS

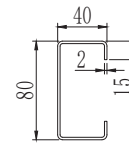
Pillar



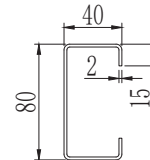
Back strengthen bar



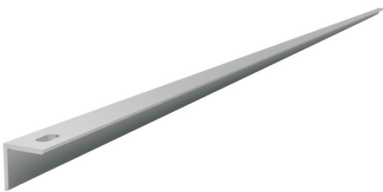
Beam
MAC Steel/
Hot-dip Galvanized Steel 0235 optional Length
can be customized



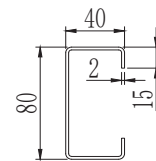
Rail
MAC Steel/
Hot-dip Galvanized Steel 0235 optional
Length can be customized



Base Seat
MAC Steel/
Hot-dip Galvanized Steel 0235 optional



Diagonal Bar
MAC Steel
Length can be customized



Middle Clamp Kit 30/35/40mm
AL6005-T5&SUS304



End Clamp Kit 30/35/40mm
AL6005-T5&SUS304