

JUNCAL

CRAFTED HOMES



LAS HUERTAS

JUNCAL

SALADITA, GRO.

TABLE OF CONTENTS

01	07
Welcome Statement	Interior Design
02	08
Location	Landscape Design
03	09
Project Overview	Purchase Process
04	10
Project Goals	Design Team
05	11
House Models	Contact
06	
Specs	



WELCOME

Welcome to JUNCAL, experience the serenity of living in the heart of the Mexican jungle, just a 10 minute walk to the ocean. These handcrafted villas are designed to blend luxury and nature seamlessly, offering you a peaceful escape surrounded by lush mango trees.

Each home is thoughtfully tailored to meet your unique needs, providing an effortless lifestyle where simplicity and elegance come together. Here, you can create your own sanctuary and embrace the beauty and tranquility of living in one of Mexico's most breathtaking settings.

SALADITA LIVING



By being part of JUNCAL, you're not only making a smart investment but also stepping into a lifestyle filled with endless waves, a warm community, and tranquil days by the ocean. Whether you're riding the surf at sunrise or enjoying the laid-back charm of the local culture, this is a place where life feels effortless and joyful. Your home here will be your gateway to both adventure and peace, offering a balanced and enriching way of life.



LAS HUERTAS

LOCATION MAP

SALADITA, GRO.



LAS HUERTAS

LOCATION PHOTO

SALADITA, GRO.

PROJECT OVERVIEW

This exclusive housing project is nestled in the heart of a serene mango jungle, offering two distinct villa-style options inspired by traditional Mexican architecture, elevated with a touch of understated luxury.

Clients can choose between a one-bedroom or a two-bedroom layout, both crafted for simplicity and elegance, blending harmoniously with the natural surroundings.

To further personalize their home, clients can select add-ons such as a parking space, private pool, or an additional bungalow for an extra room, tailoring the project to meet their specific needs. Each villa is sold pre-sale and delivered turnkey, offering a seamless, stress-free transition into a beautiful and tranquil living space.



PROJECT GOALS



RELAXATION AND COMFORT

Prioritize luxurious yet simple design elements that promote relaxation, such as cozy lounging areas, private pool, and comfortable bedrooms, ensuring the villa feels like a true escape.



SEAMLESS INDOOR-OUTDOOR LIVING

Create a harmonious flow between the villa and the natural surroundings, with open spaces, terraces, and large windows that invite in ocean breezes and maximize views of the lush gardens.



PRIVACY AND RETREAT

Design the villa to provide a sense of retreat, with private outdoor spaces like enclosed gardens and quiet lounging areas that allow for undisturbed unwinding.



SERENITY

Central to our vision is a yearning for a serene and soothing sanctuary within the living spaces. The design concept draws inspiration from a traditional Mexican aesthetic, surrounded by tranquil earthy tones, embracing natural textures, and harmonizing with the exterior spaces.

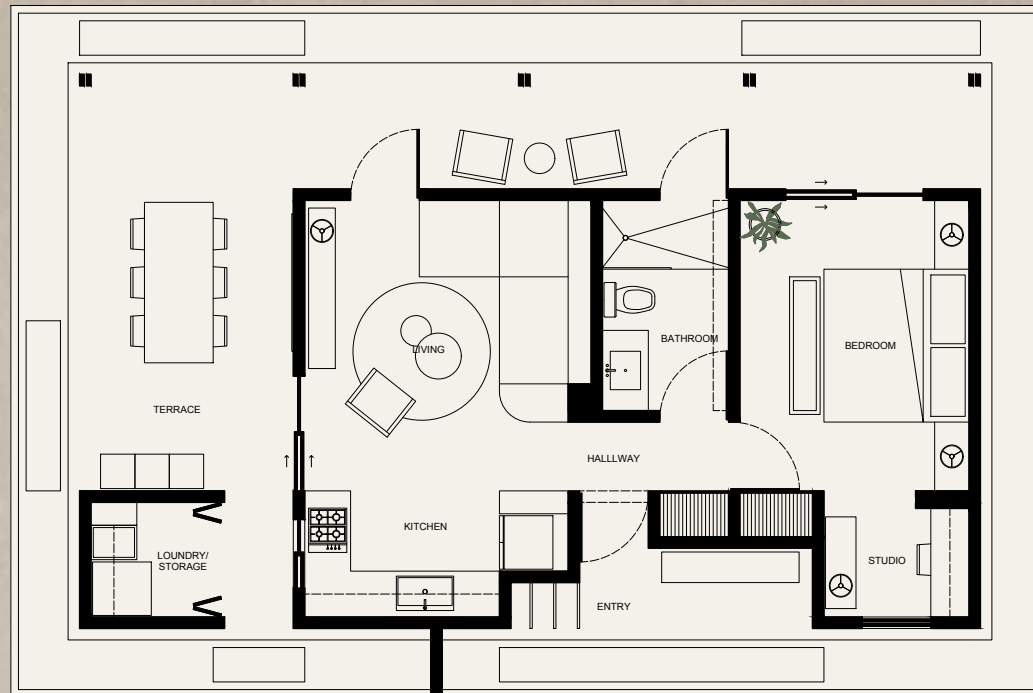
CONTINUITY

To accomplish a cohesive and harmonious home, the design concept centers on creating a sense of continuity and unity throughout the space. This is achieved by selecting a consistent color palette and coordinating finishes, such as warm wood tones and natural materials.

GATHERING

Each villa is designed thinking of a functional and inviting social gathering area where they can host events with family and friends. In response to this need, the design concept proposes an open-plan living and dining space that seamlessly integrates with a well-equipped kitchen.

FLOOR PLAN MODEL A



List of spaces:

Entry
Living room
Kitchen
Terrace dining room
Master Bedroom
Bathroom
Studio
Laundry/Storage room

Inerior: 51 m2
Covered Exterior: 40 m2
Total: 91 m2



SPECS MODEL A

ENTRY

Bench
Board rack

KITCHEN

Appliances
Cookware
Eating utensils
Cleaning utensils

LIVING ROOM

Sofa
Coffee table
Lounge chair
Cabinet
Rug and table lamp

MASTER BEDROOM

Mattress and bed linens
Nightstands and table lamps
Bench

STUDIO

Desk
Chair
Console table
Table lamp

TERRACE

Dining table and chairs
Bench
Lounge chairs
Coffee table

LAUNDRY/STORAGE

Washing machine
Sink
Cabinets

FLOOR PLAN MODEL B

JUNCAL



List of spaces:

Entry
Living room
Dining room
Kitchen
Terrace dining and living
Master Bedroom with terrace
Secondary Bedroom
Bathroom
Spa
Laundry
Storage

Interior: 133 m2

Covered Exterior: 65 m2

Total: 198 m2



SPECS MODEL B

ENTRY

Bench
Console

KITCHEN

Appliances
Cookware
Eating utensils
Cleaning utensils

DINING ROOM

Dining table
Benches

LIVING ROOM

Sofa
Coffee table
Lounge chairs
Cabinet
Floor lamp

MASTER BEDROOM

Mattress and bed linens
Nightstands and table lamps
Console and table lamp
Benches
Lounge chairs and coffee table (terrace)

SECOND BEDROOM

Mattress and bed linens
Nightstands and table lamps
Bench
Closet hangers

TERRACE

Dining table and chairs
Sofa
Lounge chairs
Coffee tables

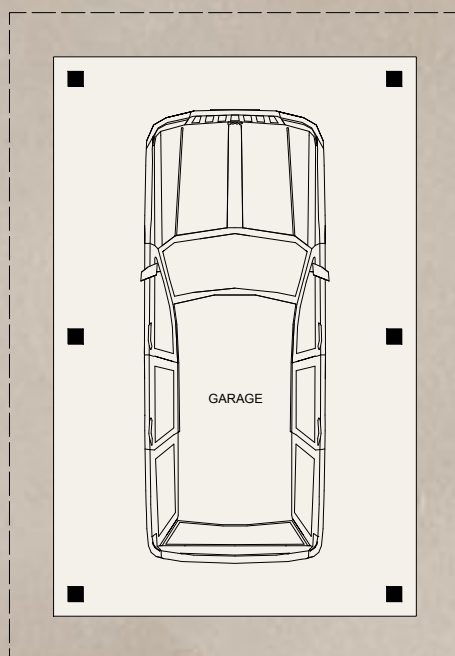
LAUNDRY

Washing machine
Sink
Cabinets

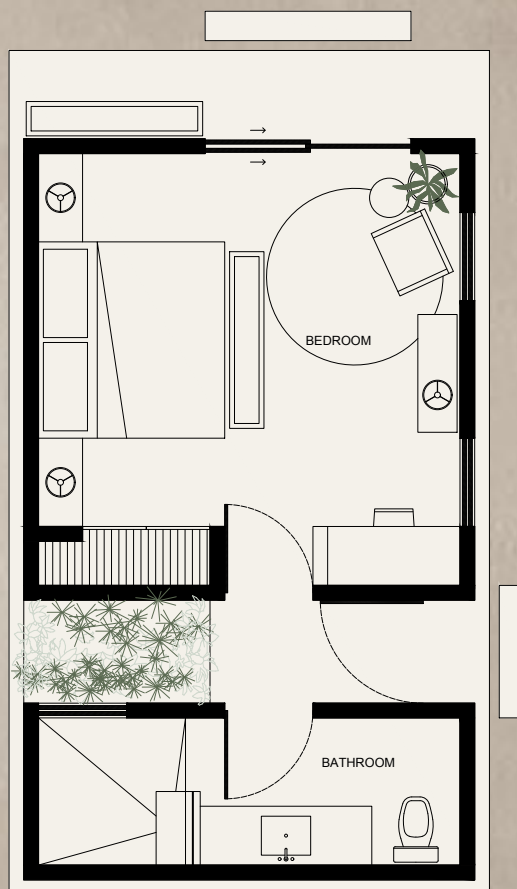
STORAGE

Board rack
Storage rack

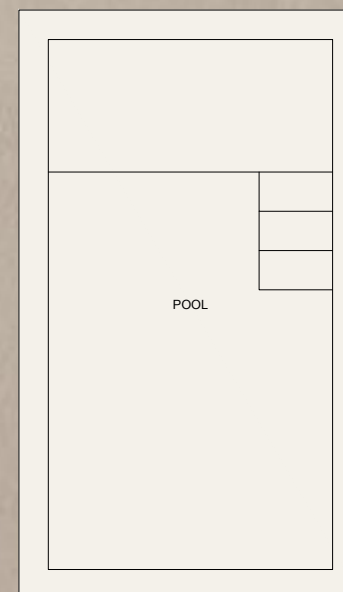
ADD-ONS



COVERED PARKING SPACE
(21 m2)

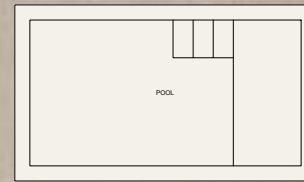
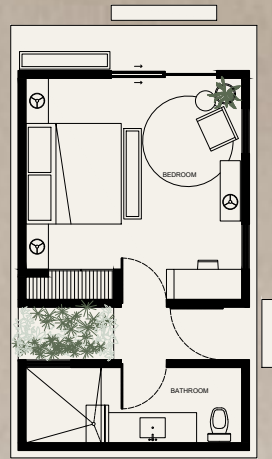


BUNGALOW
(42 m2)

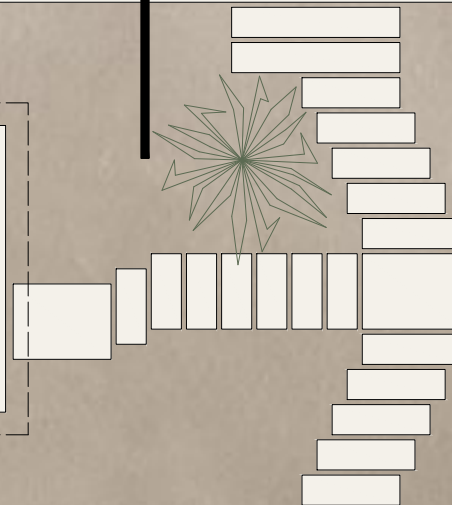
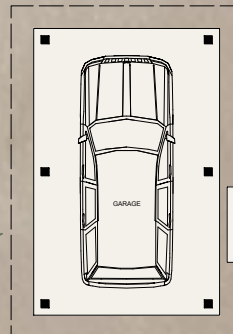
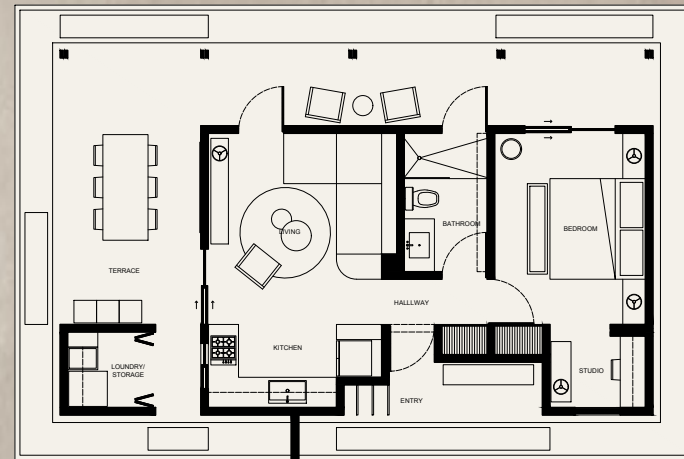


POOL
(21 m2)

ADD ONS EXAMPLE



MODEL A
+
BUNGALOW
+
POOL
+
GARAGE



JUNCAL



SPECS ADD-ONS

BUNGALOW

Mattress and bed linens
Nightstands and table lamps
Desk and chair
Console and table lamp
Bench (terrace and bed)
Lounge chair and coffee table
Rug

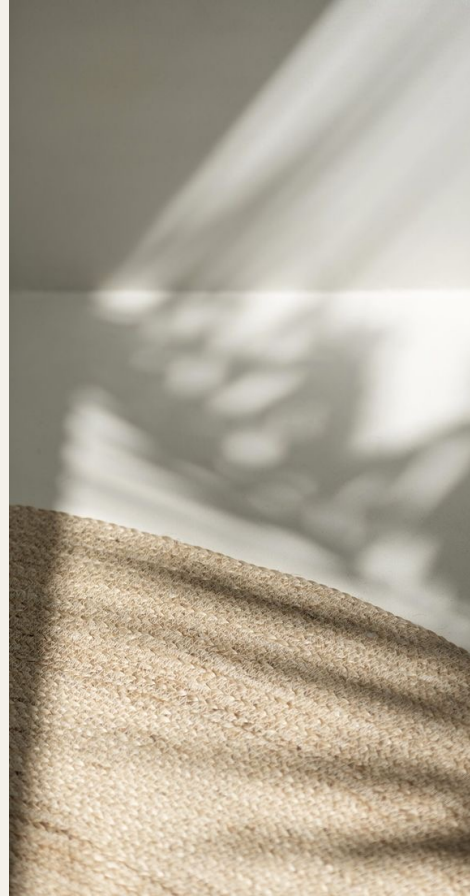
POOL

Sunbeds
Coffee table
Umbrella

COVERED PARKING SPACE

INTERIOR DESIGN

JUNCAL



Artisanal

Refined

Warm

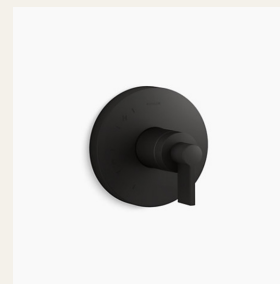
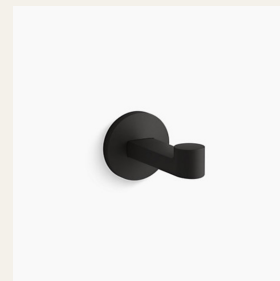
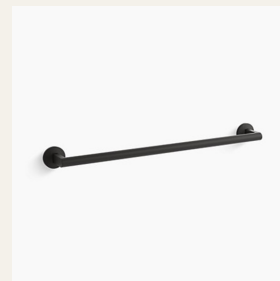
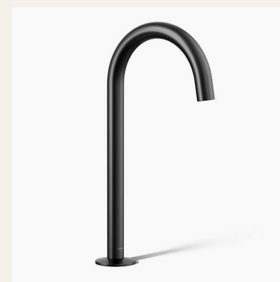
Timeless

3D RENDERING



MODEL A with Private Pool Backyard

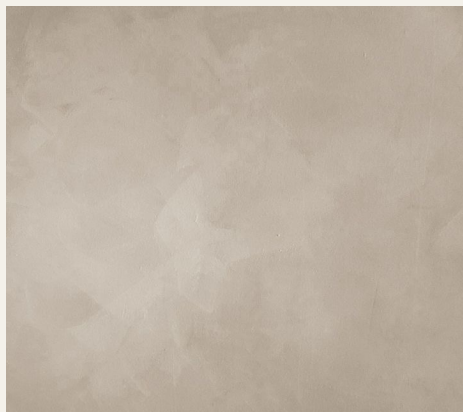
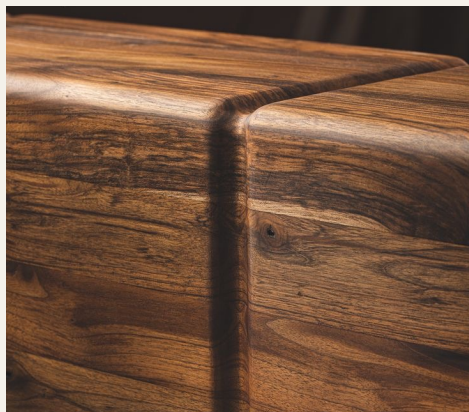
FIXTURES



Kohler Fixtures

For bathroom fixtures, KOHLER was selected to offer high quality and design, maintaining simplicity and elegance in every room of the house.

COLOUR PALETTE



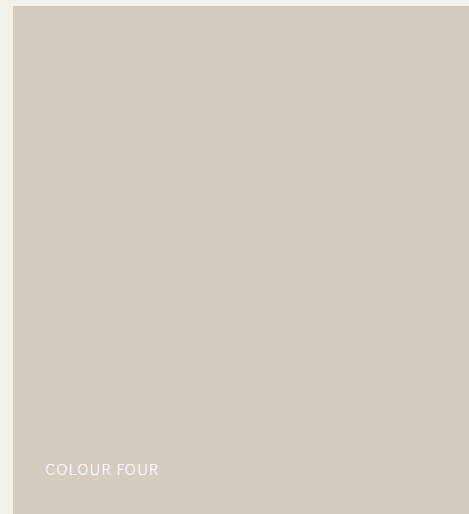
COLOUR ONE



COLOUR TWO

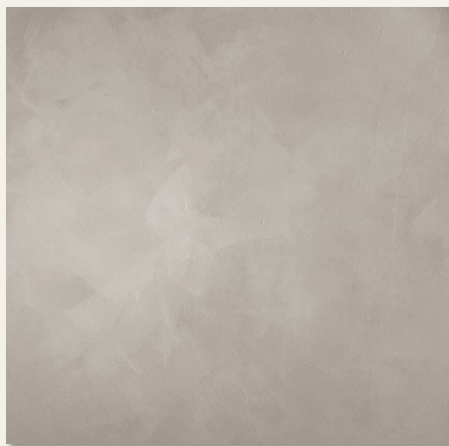


COLOUR THREE



COLOUR FOUR

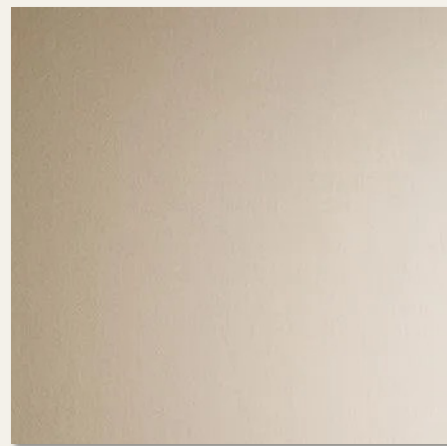
SAMPLE BOARD



INTERIOR FLOORING
Polished Concrete



EXTERIOR FLOORING
Textured Concrete



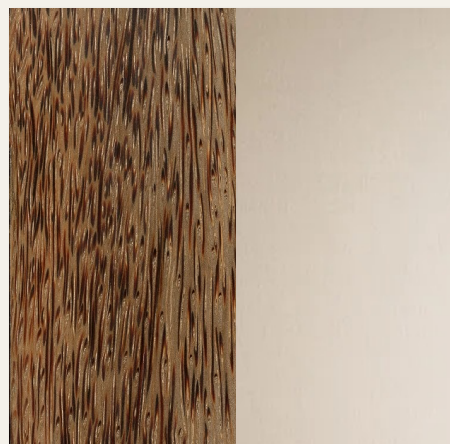
INTERIOR WALLS
Sand Beige Paint



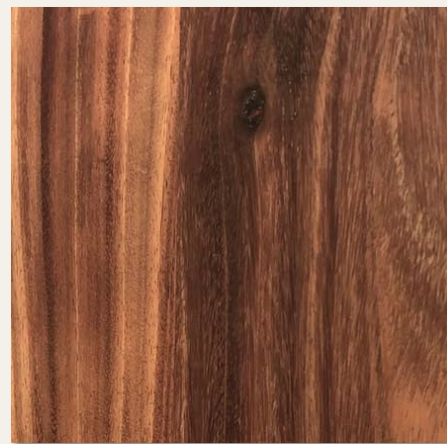
EXTERIOR WALLS
Sand Beige Stucco



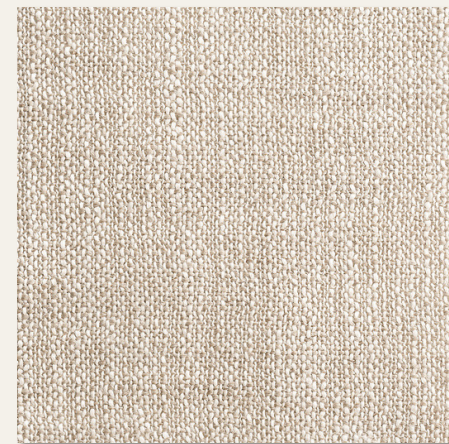
CONCRETE FURNITURE
Sand Beige Pasta



CEILINGS
Palm Wood Beams & Sand Beige Paint



CARPENTRY
Natural Parota Hard Wood



UPHOLSTERY
Beige Linen or similar

FURNITURE DESIGN



LOUNGE CHAIR

Parota hardwood chair with hand woven wicker.



DINING TABLE

Parota hardwood dining table.



INTERIOR BENCH

Parota hardwood bench with hand woven wicker.

3D RENDERING



MODEL B

LANDSCAPE DESIGN



Lush

Harmonious

Serene

Abundant

PURCHASE PROCESS

1. CHOOSE YOUR LAND

Choose between the different land options Las Huertas has to offer, whether you like to be surrounded by trees, or you prefer a blank canvas for your garden, there's a right lot for you.

*Confirm with the sales team if the land you like is eligible for a JUNCAL home.

2. SELECT THE HOUSE MODEL YOU PREFER

We have a one bedroom and a two bedroom layout, each with their respective common areas and private gardens. Both options come fully furnished, decorated and landscaped to make your turnkey purchase experience easy and stress-free.

3. SELECT ADD ONS

Regardless of the layout you prefer, you can add a bungalow, private pool and/or covered parking space to meet your necessities.

4. CONTACT OUR TEAM FOR FINAL QUOTE AND TIMELINES

Upon your selections being finalized, we will proceed to generate a final quote with its respective payments, timelines and clear steps to finalize your purchase.



ESTUDIO BAO

MEET OUR DESIGN TEAM



DIEGO HUERDO

ARCHITECT / INTERIOR DESIGNER

Diego is one of the lead architects and designers for the project, with a background shaped by his studies at UIA in Mexico City. His approach to design is driven by a conceptual, aesthetic, and contextual perspective, aiming to create spaces that resonate with the environment and cultural context.

Diego integrates artistic expression with architectural principles, emphasizing a thoughtful balance between form, function, and place. His work seeks to evoke meaning and beauty, ensuring that each project is not only visually compelling but also deeply connected to its surroundings.



JAIME GARCÍA DE VINUESA

ARCHITECT / INTERIOR DESIGNER

Jaime is one of the the lead architects and designers for the project, with a strong background from UIA in Mexico City. His approach to design emphasizes functionality and the integration of natural elements, focusing on how spaces interact with their surroundings.

Jaime believes in creating environments that not only meet practical needs but also connect with the landscape, using design to enhance both the utility and natural beauty of a space. His commitment to functional design ensures that each project serves its purpose while harmonizing with the environment.



PAULINA ÁVILA

INTERIOR DESIGN COORDINATOR

Meet Paulina, a versatile professional with a unique background in both Interior Design and Digital Marketing. She brings creativity and a keen eye for aesthetics to our team, along with a strong understanding of digital strategies. With experience in designing beautiful, functional spaces and crafting engaging online content, Paulina is passionate about blending design principles with marketing insights to enhance our brand's presence. Her skills in social media, content creation, and visual storytelling makes her an invaluable asset to our projects.



JUNCAL

www.lashuertas.info
lashuertasinfo@gmail.com