

STOESS MFG INC.

**TIC 80
PARTS CATALOG**

REVISED JUNE 2016

Stoess Manufacturing Inc.

225 W. North Street
Washtucna, WA 99371
1-888-771-2314

Printed in the United States of America

TABLE OF CONTENTS

TIC 80

[TIC 80 MAIN FRAME DRAWING](#) ----- Page 3

[TIC 80 PART NUMBERS](#) ----- Page 4

[HYDRAULICS DIAGRAM FOR MAIN FRAME](#) ----- Page 6

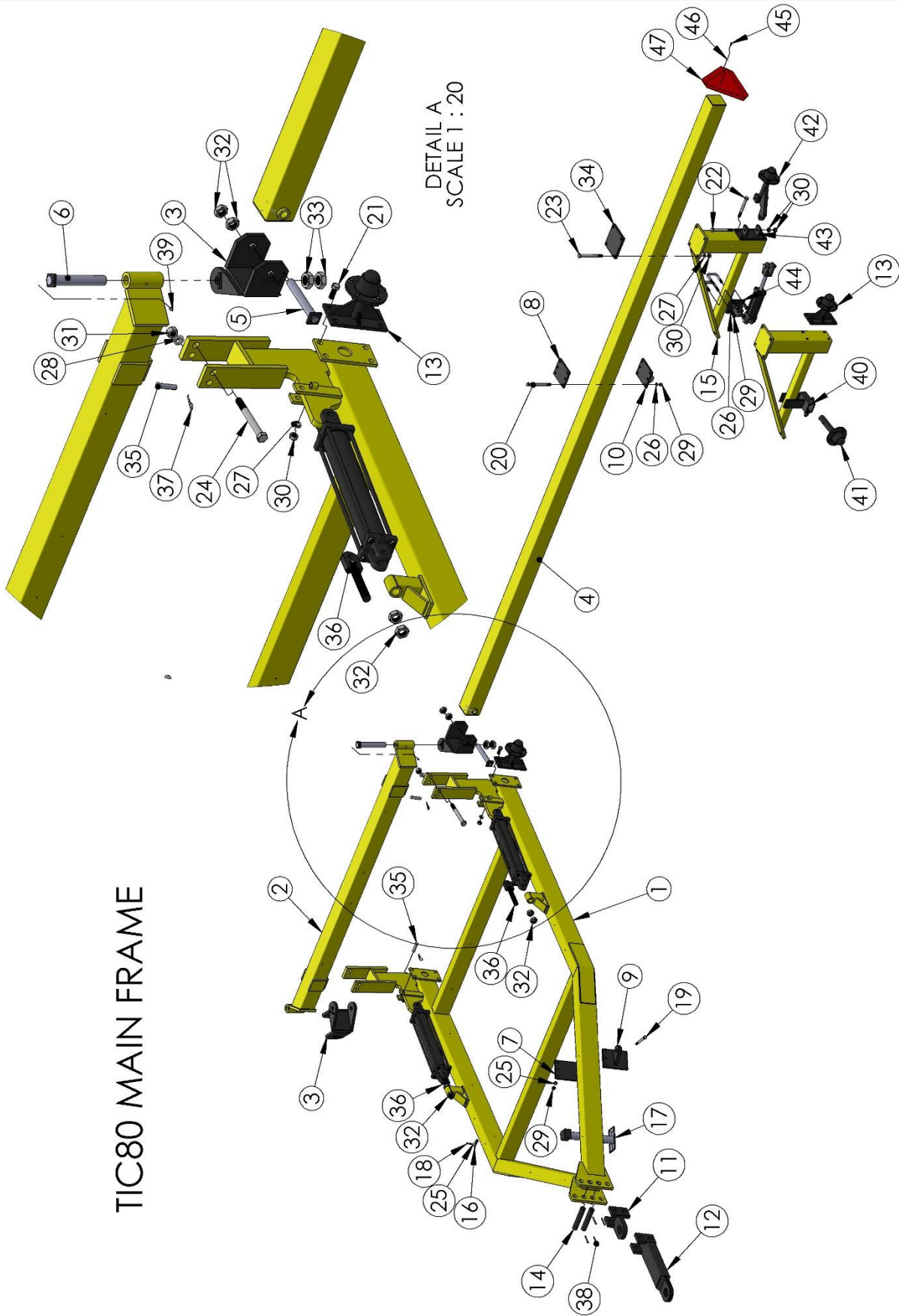
[HYDRAULICS DIAGRAM FOR WING WHEELS](#) ----- Page 7

[LIFT ARMS FOR HARROW AND SPRINGTOOTH](#) ----- Page 8

[SPINDLE AND HUB](#) ----- Page 9

[CYLINDERS](#) ----- Page 10

TIC80 MAIN FRAME



TIC80 MAIN FRAME

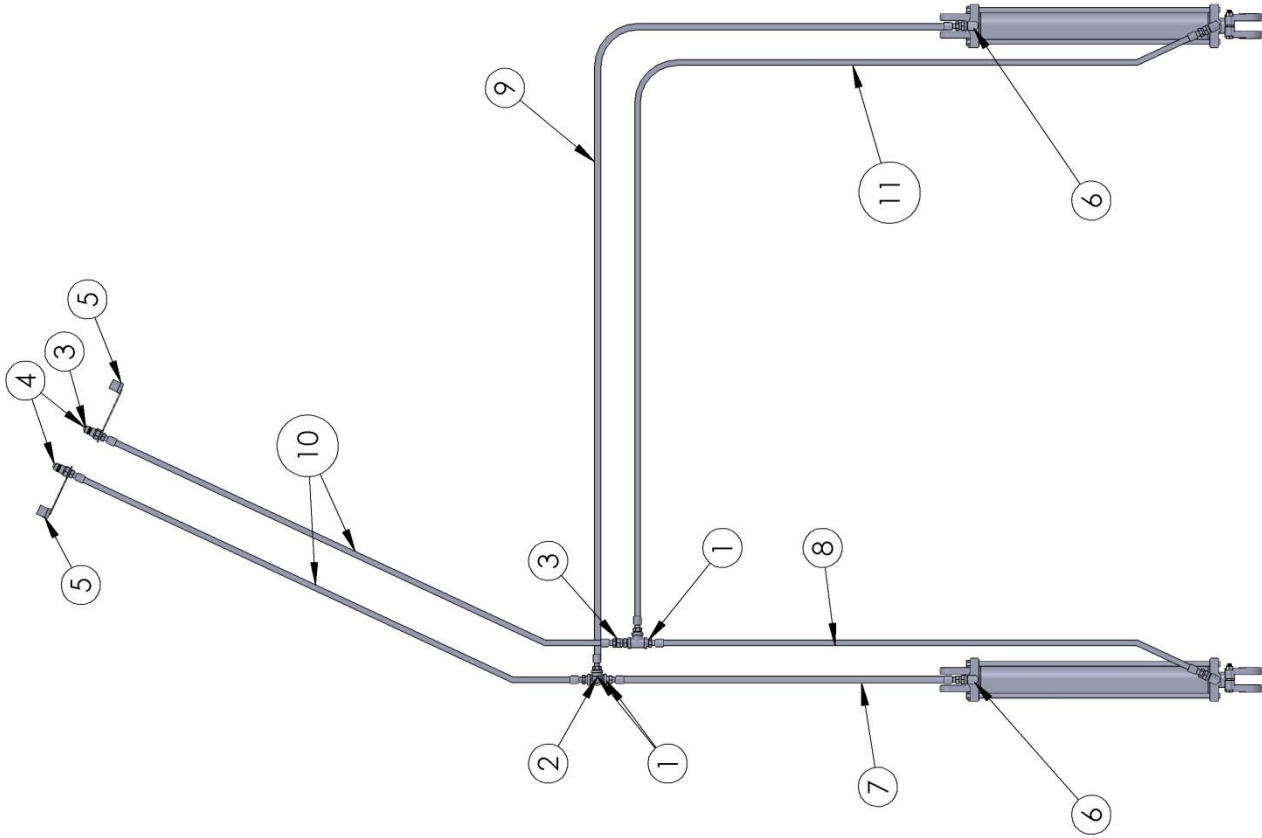
INDEX #	PART#	DESCRIPTION	QUANTITY/CART	
			Auto	Hyd.
1	HCPT1	Center section frame	1	1
2	HCPT66	Center beam	1	1
3	HCPT63	Knuckle	2	2
4	HCPT82	15' wing	2	2
	HCPT67	20' wing		
	HCPT74	25' wing		
5	HCPT64	1-1/4" pin	2	2
6	HCPT65	1-1/2" pin	2	2
7	*HCPT12A	Backup plate 6"	2	2
8	*HCPT12B	Backup plate 5"	opt.	opt.
9	HCPT13A	Cable bracket 6"	2	2
10	HCPT13B	Cable bracket 5"	opt.	opt.
11	HCPT18	Eye	1	1
12	HCPT59	Extended eye	opt.	opt.
13	HCPT19	Rear hub	var.	var.
14	JPT18	Pin	2	2
15	HCPT75	Wing wheel bracket	2	2
16	**HCPT7	Hydraulic hold down clip	9	22
17	JACK5000X10	5000 pound jack	1	1
18	*FCSV.25x1.5	1/4 x 1-1/2 cap screw	9	22
19	*FCSV.625X6	5/8 x 6 cap screw	12	12
20	*FCSV.625x8	5/8 x 8 cap screw	opt.	opt.
21	*FCSV.75X2	3/4 x 2 cap screw	8	8
22	*FCSV.75X7	3/4 x 7 cap screw	8	10
23	*FCSV.75X8	3/4 x 8 cap screw	8	8
24	*FCSV1x9	1 x 9 cap screw	4	4
25	**FLW.25	1/4 lock washer	10	23
26	*FLW.625	5/8 lock washer	40	40
27	*FLW.75	3/4 lock washer	8	8
28	*FLW1	1" lock washer	4	4
29	*FNT.625	5/8 nut	40	40
30	*FNT.75	3/4 nut	16	16
31	*FNT1	1" nut	16	16
32	FNTJ1.25	1-1/4 jam nut	8	8
33	FNTJ1.5	1-1/2 jam nut	4	4
34	HCPT76	Backup plate	2	2
35	FCLV.75x3	3/4 x 3 clevis pin	2	2
36	HCPT57	3-1/2 or 4" cylinder eye	2	2
37	FHPC.75	3/4" hairpin clip	2	2
38	FCOT.313X2.5	5/16 x 2-1/2 cotter pin	4	4
39	ZERK.125P	1/8 pipe zerk	4	4

TIC80 MAIN FRAME CONTINUED

<u>INDEX #</u>	<u>PART #</u>	<u>DESCRIPTION</u>	<u>QUANTITY/CART</u>	
Auto Hyd.				
40	HCPT81	Wing wheel spindle brkt.	2	0
41	HCPT80	Wing wheel spindle	2	0
42	HCPT77	Hyd. wing spindle/hub	0	2
43	HCPT78	Wing spindle bracket	0	2
44	HCPT79	Cylinder bracket	0	2
45	FCSV.25x.75	1/4 x 3/4 cap screw	1	1
46	FLW.25	1/4" lock washer	1	1
47	SMVS	Slow moving vehicle sign	1	1
NP	EPT7-8	Mounted 7.60 x 15 tire	6	4
	EPT9-8	Mounted 9.5L x 15 tire		
	EPT11-8	Mounted 11L x 15 tire		
NP	Cable (various lengths)		2	2
NP	HCPT23C	Standard box of fasteners and small parts consisting of all the above * parts.	1	1
**	Included in hose kit.			

HYDRAULICS DIAGRAM FOR MAIN FRAME

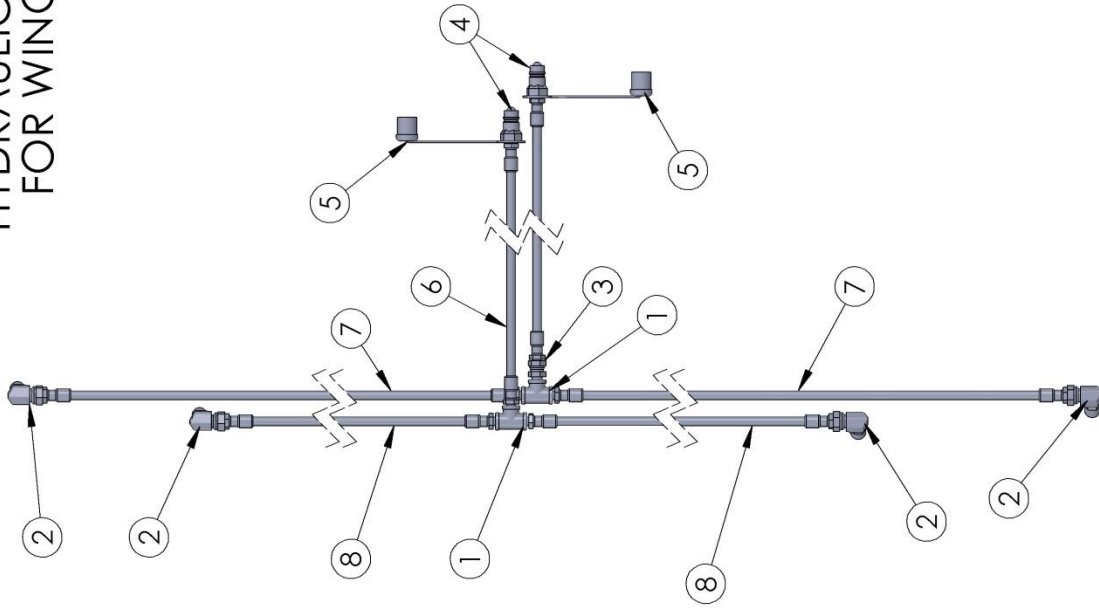
DATE 3/15



ITEM #	DESCRIPTION	PART #
1	TEE 1/2" BLACK IRON	HBIT.5
2	ELBOW 1/2" STREET	HBIES90X.5
3	FLOW RESTRICTOR 1/2"	HSV.5X.5
4	PIONEER TIP	HTIP.5
5	PIONEER CAP	HCAP
*6	ELBOW 1/2" X 1/2" O-RING	HE90VO.5X.5
	ELBOW 1/2" X 5/8" O-RING	HE90VO.625X.5
7	1/2" HOSE X 40"	
8	1/2" HOSE X 67"	
9	1/2" HOSE X 118"	
10	1/2" HOSE X 124"	
11	1/2" HOSE X 141"	
* 1/2 X 1/2 ELBOWS FOR 3-1/2 AND 4" CYLINDERS		
1/2 X 5/8 ELBOWS FOR 5" CYLINDERS		
NOTE: All hoses have 1/2" MPT ends.		

1 2 3 4 5

HYDRAULIC DIAGRAM FOR WING WHEELS

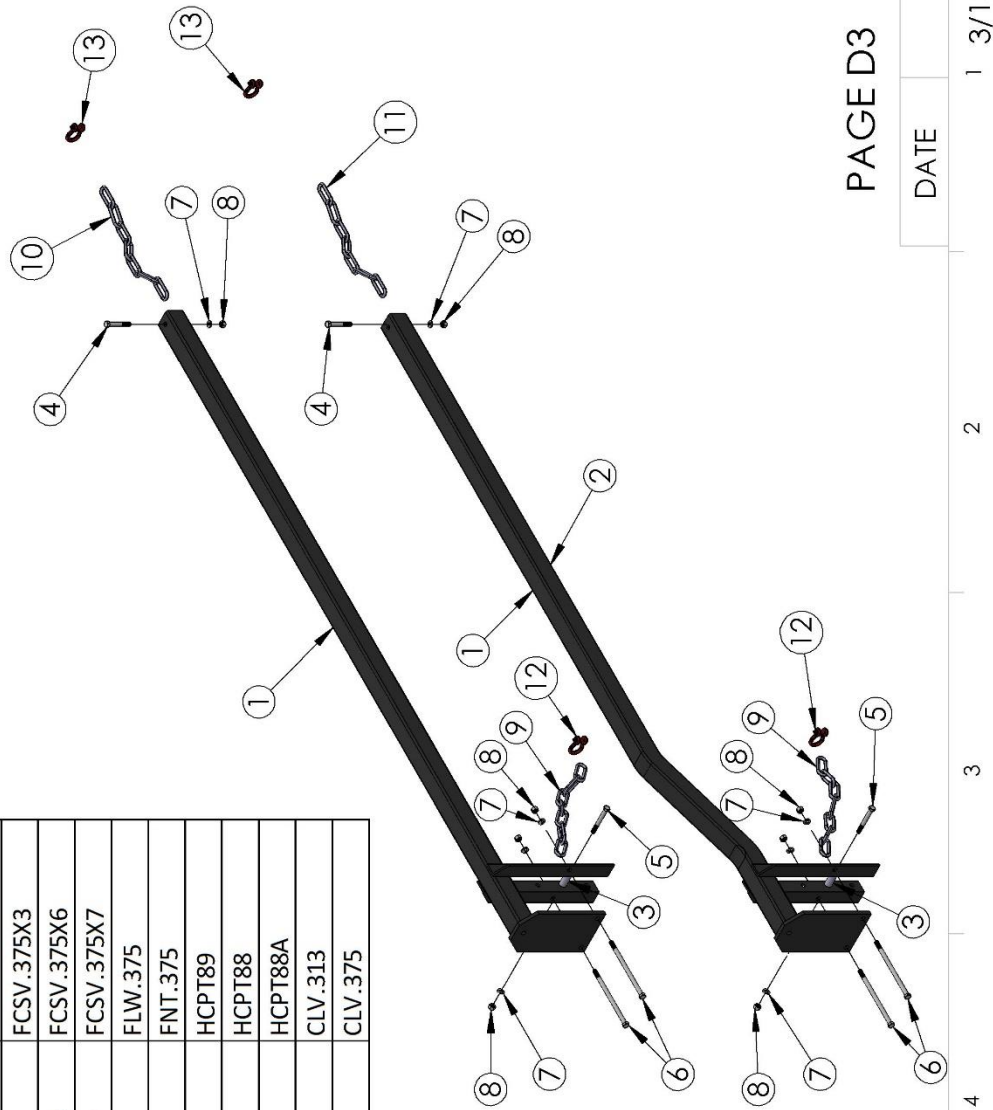


ITEM #	DESCRIPTION	PART #
1	TEE 3/8" SWIVEL	HT.375X.375FS
2	ELBOW 1/2" X 3/8" O-RING	HE90VO.5X.375
3	FLOW RESTRICTOR 3/8"	HSV.375X.375
4	PIONEER TIP	HTIP.5
5	PIONEER CAP	HCAP
6	1/4" HOSE X 24'6"	
*7	1/4" HOSE X VARIABLE LENGTH	
*8	1/4" HOSE X VARIABLE LENGTH	

*Hose lengths determined by model #.

LIFT ARMS FOR HARROW AND SPRINGTOOTH

ITEM #	DESCRIPTION	PART #
1	Lift arm/17" clearance for 6" sq tube	HCPT6
	Lift arm/17" clearance for 5" sq tube	HCPT69
2	Lift arm/22" clearance for 6" sq tube	HCPT6A
	Lift arm/22" clearance for 5" sq tube	HCPT69A
3	Pipe spacer	HCPT15
4	Cap screw, 3/8 X 2-1/2 grd. 5	FCSV.375X2.5
5	Cap screw, 3/8 X 3 grd. 5	FCSV.375X3
6	Cap screw, 3/8 X 6 grd. 5 for 5" sq tube	FCSV.375X6
	Cap screw, 3/8 x 7 grd. 5 for 6" sq tube	FCSV.375X7
7	Lockwasher, 3/8"	FLW.375
8	Nut, 3/8"	FNT.375
9	3/8 side chain - 7 links	HCPT89
10	5/16 side chain - 10 links	HCPT88
11	5/16 side chain - 13 links	HCPT88A
12	Clevis - 5/16	CLV.313
13	Clevis - 3/8	CLV.375



PAGE D3

PAGE D3

DATE

1 3/15

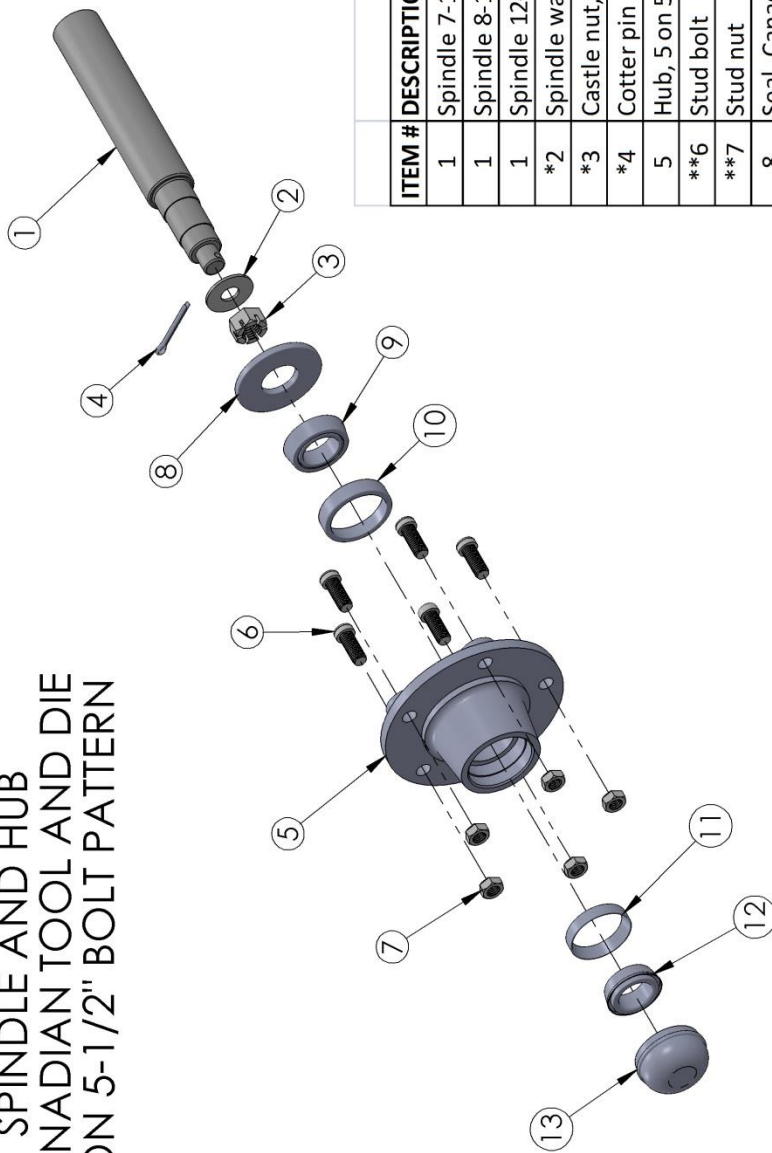
2

3

4

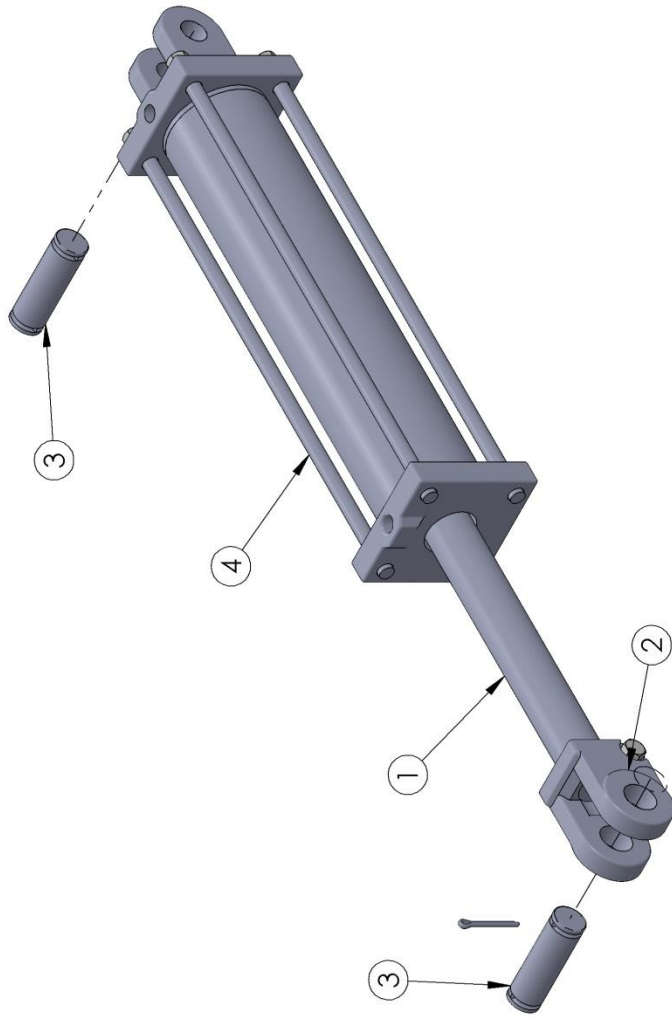
5

SPINDLE AND HUB CANADIAN TOOL AND DIE 5 ON 5-1/2" BOLT PATTERN



ITEM #	DESCRIPTION	STOESS PART #	CROSS REF. #
1	Spindle 7-1/2" OAL	SP8.5	
1	Spindle 8-1/4" OAL	SP8.25	
1	Spindle 12-1/2" OAL	SP12.5	
*2	Spindle washer	SW2.75	
*3	Castle nut, 3/4"	NUTSPIN.75-16	
*4	Cotter pin	FCOT.188X1.5	
5	Hub, 5 on 5-1/2	HUB5-5.5	
**6	Stud bolt	BOLTSTUD	
**7	Stud nut	NUTSTUD	
8	Seal, Canadian Tool & Die	SEALCTD	CR17618
8	Seal, French & Hecht	SEALF&H	CR15209
8	Seal, Electric Wheel	SEALEWC	CR15190
**9	Inner bearing	BEARL	LM48548
**10	Inner race	RACEL	LM48510
**11	Outer race	RACES	LM67010
**12	Outer bearing	BEARS	LM67048
**13	Hub cap	HUBCAP	
	* Included in spindle		
	** Included in hub		

Check imprint lettering on hub to determine correct seal.



ITEM #	DESCRIPTION	3 X 8 CYLINDER	3-1/2 X 2 CYLINDER	4 X 24 CYLINDER	5 X 24 CYLINDER
1	PISTON ROD	HCYL3X8	HCYL3.5X24	HCYL4X24	HCYL5X24
2	CLEVIS	HCYLSHAFT3X8	HCYLSHAFT3.5X24	HCYLSHAFT4X24	HCYLSHAFT5X24
3	CLEVIS PIN/PINS	HCLEVIS4	HCLEVIS4	HCLEVIS4	HCLEVIS5
4	TIE ROD	HCLVPIN1	HCLVPIN1	HCLVPIN1	HCLVPIN1.25
NP	SEAL KIT	HICYTR8	HICYTR24	HICYTR24	HICYTR24
		HICYK3-3000	HICYK3.5-3000	HICYK4-3000	HICYK5-3000

DATE 3-15

1

2

3

4

5