

STOESS MFG INC.

TIC 100 PARTS MANUAL

REVISED JUNE 2016

Stoess Manufacturing Inc.

225 W. North Street
Washtucna, WA 99371
1-888-771-2314

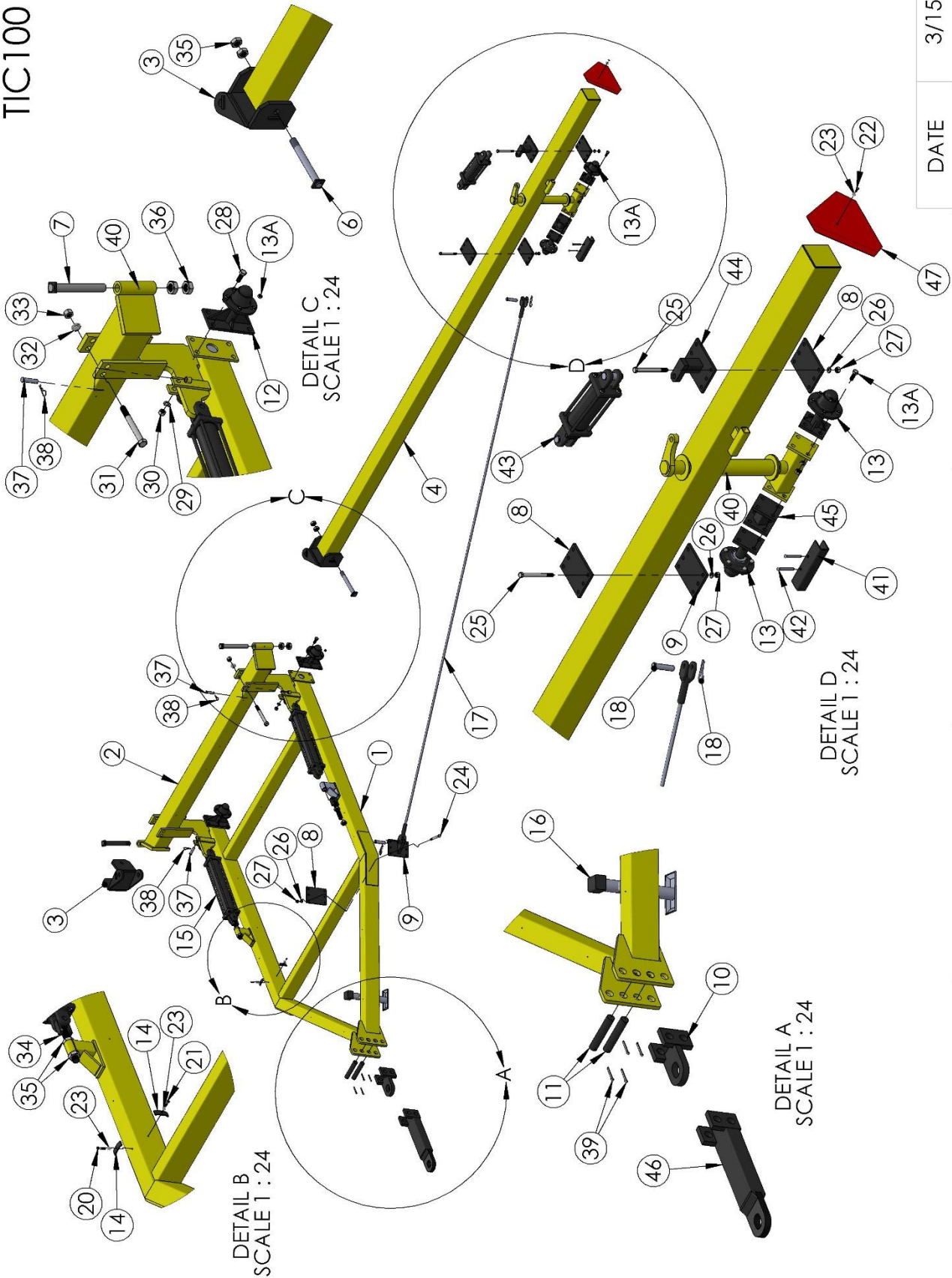
Printed in the United States of America

TABLE OF CONTENTS

TIC 100

TIC 100 MAIN FRAME DRAWING -----	Page 3
TIC 100 PART NUMBERS -----	Page 4
HYDRAULICS DIAGRAM FOR MAIN FRAME -----	Page 6
HYDRAULICS DIAGRAM FOR WING WHEELS -----	Page 7
LIFT ARMS FOR HARROW AND SPRINGTOOTH -----	Page 8
ROD WEEDER LIFT ARMS -----	Page 9
TELESCOPING BRACES FOR TIC 100 -----	Page 10
LOCKING ARM ASSEMBLY HCPT38 -----	Page 11
LOCKING ARM ASSEMBLY PART NUMBERS -----	Page 12
SPINDLE AND HUB -----	Page 13
CYLINDERS -----	Page 14

TIC100



DATE 3/15

1
2
3
4
5

TIC100 MAIN FRAME

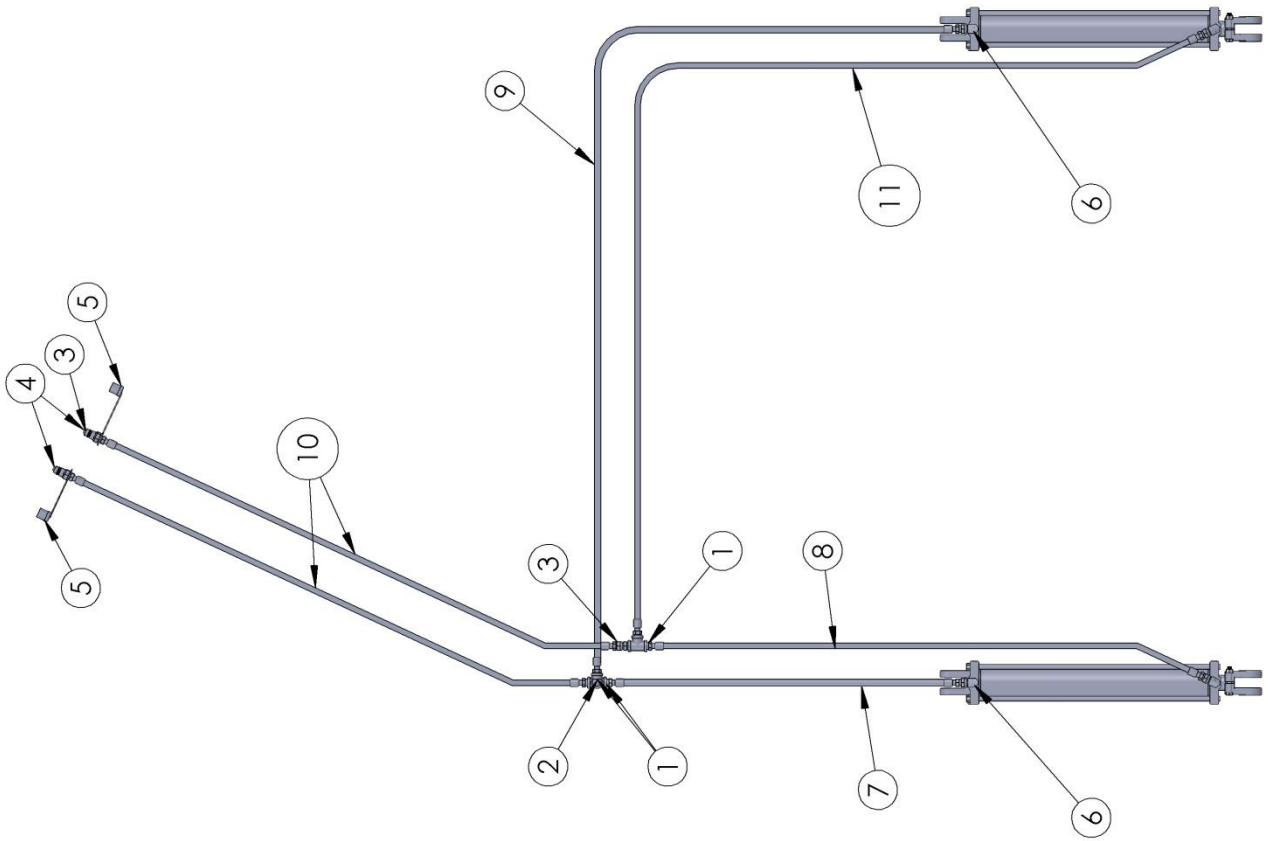
<u>INDEX #</u>	<u>PART#</u>	<u>DESCRIPTION</u>	<u>QUANTITY/CART</u>
1	HCPT1	Center section frame	1
2	HCPT3	Center beam	1
3	HCPT4	Knuckle	2
4	HCPT17	12' wing	2
	HCPT24	15' wing	
	HCPT5	20' wing	
	HCPT11	25' wing	
	HCPT60	30' wing	
5	*FCSV.625x1.75	5/8 X 1-3/4 cap screw	16
6	HCPT9	1-1/4" pin	2
7	HCPT10	1-1/2" pin	2
8	*HCPT12A	Backup plate	4
9	HCPT13A	Cable bracket	4
10	HCPT18	Eye	1
11	JPT18	Pin	2
12	HCPT19	Center Section Hub	4
13	JPT30	Wing wheel hub	4
13A	NUTSTUD	Stud nut, 1/2 - 20	40
14	**HCPT7	Hydraulic hose clip	22
15	HCYL3.5X24	Cylinder 3-1/2 x 24	2
	HCYL4X24	Cylinder 4 x 24	2
	HCYL5X24	Cylinder 5 x 24	2
16	JACK5000X10	5000 pound jack	1
17		Cable (various lengths)	2
18	FCLVPIN1X4	Clevis pin 1 x 4	4
19	FHPC1	Hairpin clip 1"	4
20	**FCSV.25x1.5	1/4 x 1-1/2 cap screw	9
21	**FCSV.25X1.25	1/4 x 1-1/4 cap screw	13
22	FCSV.25x.75	1/4 x 3/4 cap screw	1
23	**FLW.25	1/4 lockwasher	14
24	*FCSV.625X6	5/8 x 6 cap screw	12
25	*FCSV.625x8	5/8 x 8 cap screw	12
26	*FLW.625	5/8 lockwasher	40
27	*FNT.625	5/8 nut	40
28	*FCSV.75X2	3/4 x 2 cap screw	16
29	*FLW.75	3/4 lockwasher	16
30	*FNT.75	3/4 nut	16

TIC100 MAIN FRAME CONTINUED

<u>INDEX #</u>	<u>PART #</u>	<u>DESCRIPTION</u>	<u>QUANTITY/CART</u>
31	*FCSV1x9	1 x 9 cap screw	8
32	*FLW1	1" lockwasher	8
33	*FNT1	1" nut	8
34	HCPT57	3-1/2 or 4" cylinder eye	2
	HCPT58	5" cylinder eye	
35	FNTJ1.25	1-1/4 jam nut	8
36	FNTJ1.5	1-1/2 jam nut	4
37	FCLV.75x3	3/4 x 3 clevis pin	2
38	FHPC.75	3/4" hairpin clip	2
39	FCOT.313X2.5	5/16 x 2-1/2 cotter pin	4
40	ZERK.125P	1/8 pipe zerk	6
41	HCPT90	Travel stop/loxall pins	2
42	FLXP.375X3	Loxall pin 3/8 x 3	4
43	HYCY3X8	3 x 8 cylinder	2
44	HCPT40	Wing wheel cylinder brkt.	2
45	HCPT42	Wing wheel ext. brkt.	opt.
46	HCPT59	Extended eye	opt.
47	SMVS	Slow moving vehicle sign	1
NP	EPT7-8	Mounted 7.60 x 15 tire	8
	EPT9-8	Mounted 9.5L x 15 tire	
	EPT11-8	Mounted 11L x 15 tire	
NP	HCPT23A	Standard box of fasteners 1 and small parts consisting of all the above * parts.	1
**		Included in hose kit.	

HYDRAULICS DIAGRAM FOR MAIN FRAME

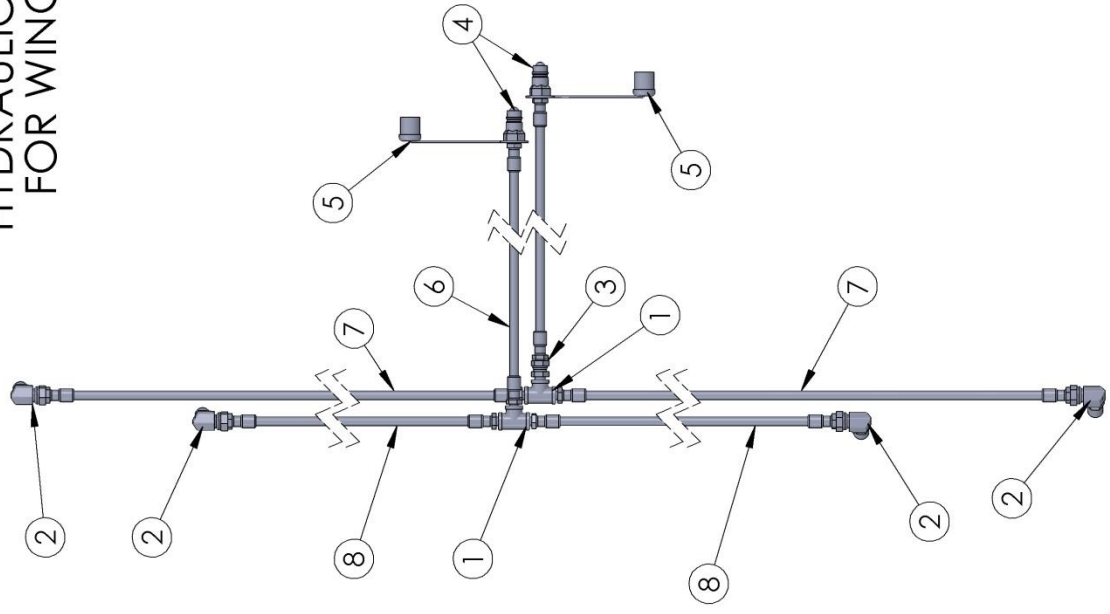
DATE 3/15



ITEM #	DESCRIPTION	PART #
1	TEE 1/2" BLACK IRON	HBIT.5
2	ELBOW 1/2" STREET	HBIES90X.5
3	FLOW RESTRICTOR 1/2"	HSV.5X.5
4	PIONEER TIP	HTIP.5
5	PIONEER CAP	HCAP
*6	ELBOW 1/2" X 1/2" O-RING	HE90VO.5X.5
	ELBOW 1/2" X 5/8" O-RING	HE90VO.625X.5
7	1/2" HOSE X 40"	
8	1/2" HOSE X 67"	
9	1/2" HOSE X 118"	
10	1/2" HOSE X 124"	
11	1/2" HOSE X 141"	
* 1/2 X 1/2 ELBOWS FOR 3-1/2 AND 4" CYLINDERS		
1/2 X 5/8 ELBOWS FOR 5" CYLINDERS		
NOTE: All hoses have 1/2" MPT ends.		

1 2 3 4 5

HYDRAULIC DIAGRAM FOR WING WHEELS

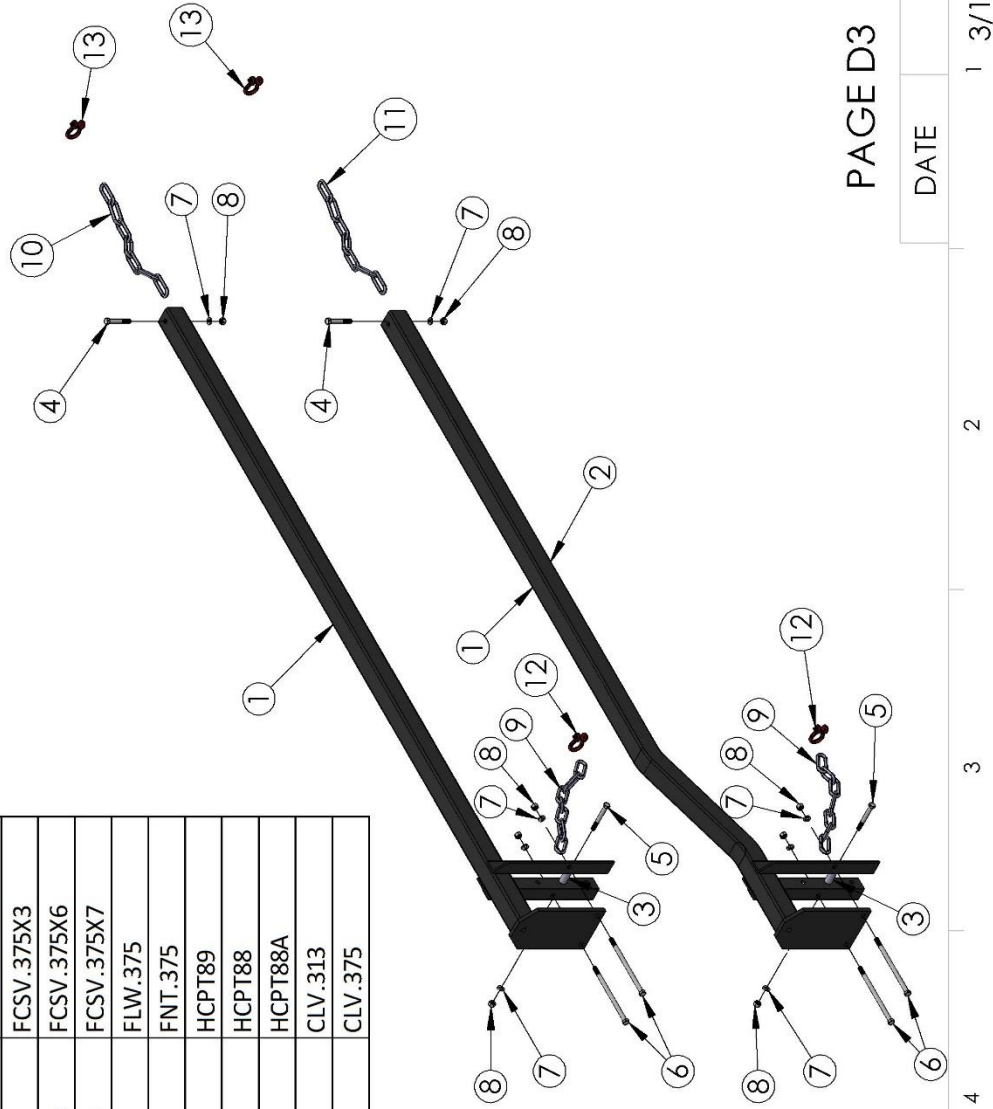


ITEM #	DESCRIPTION	PART #
1	TEE 3/8" SWIVEL	HT.375X.375FS
2	ELBOW 1/2" X 3/8" O-RING	HE90VO.5X.375
3	FLOW RESTRICTOR 3/8"	HSV.375X.375
4	PIONEER TIP	HTIP.5
5	PIONEER CAP	HCAP
6	1/4" HOSE X 24'6"	
*7	1/4" HOSE X VARIABLE LENGTH	
*8	1/4" HOSE X VARIABLE LENGTH	

*Hose lengths determined by model #.

LIFT ARMS FOR HARROW AND SPRINGTOOTH

ITEM #	DESCRIPTION	PART #
1	Lift arm/17" clearance for 6" sq tube	HCPT6
	Lift arm/17" clearance for 5" sq tube	HCPT69
2	Lift arm/22" clearance for 6" sq tube	HCPT6A
	Lift arm/22" clearance for 5" sq tube	HCPT69A
3	Pipe spacer	HCPT15
4	Cap screw, 3/8 X 2-1/2 grd. 5	FCSV.375X2.5
5	Cap screw, 3/8 X 3 grd. 5	FCSV.375X3
6	Cap screw, 3/8 X 6 grd. 5 for 5" sq tube	FCSV.375X6
	Cap screw, 3/8 x 7 grd. 5 for 6" sq tube	FCSV.375X7
7	Lockwasher, 3/8"	FLW.375
8	Nut, 3/8"	FNT.375
9	3/8 side chain - 7 links	HCPT89
10	5/16 side chain - 10 links	HCPT88
11	5/16 side chain - 13 links	HCPT88A
12	Clevis - 5/16	CLV.313
13	Clevis - 3/8	CLV.375



PAGE D3

PAGE D3

DATE

1 3/15

2

3

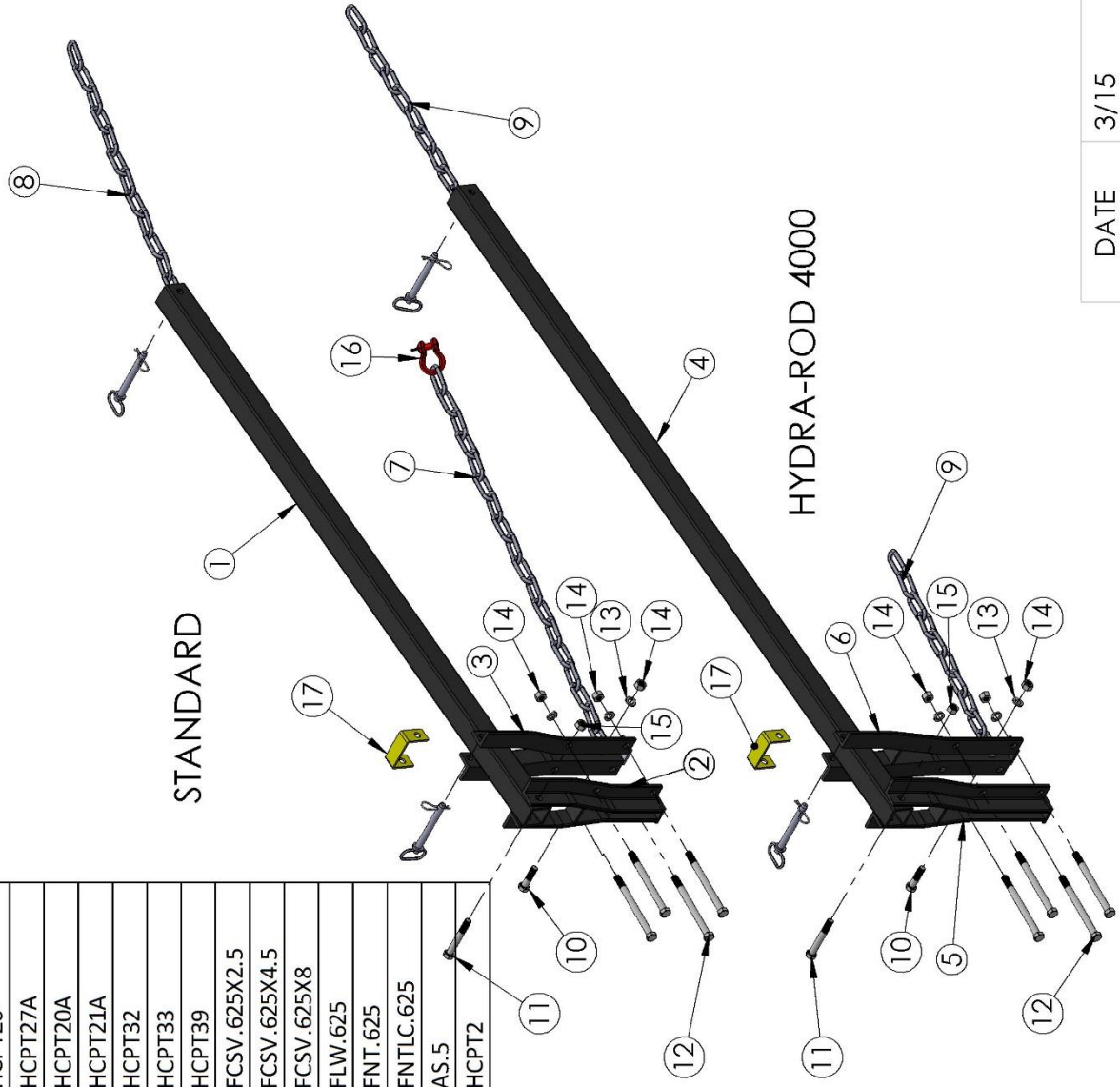
4

5

ROD WEEDER LIFTARMS

STANDARD

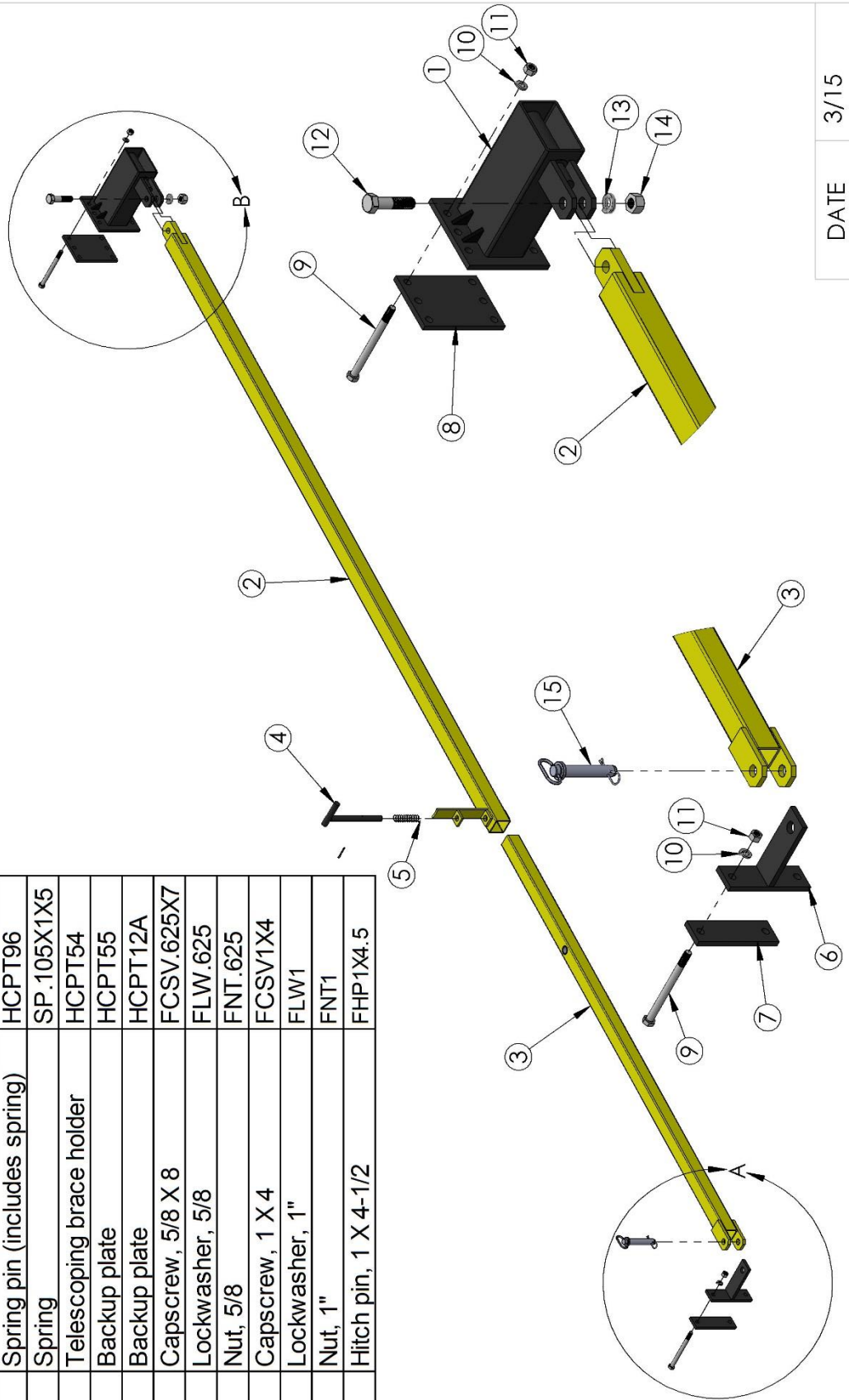
HYDRA-ROD 4000



ITEM #	DESCRIPTION	PART #
1	Lift arm center drive weeders	HCPT27
2	Front lift arm bracket for center drive	HCPT20
3	Rear lift arm bracket for center drive	HCPT20
4	Lift arm HYDRA-ROD 4000	HCPT27A
5	Front lift arm bracket HYDRA-ROD 4000	HCPT20A
6	Rear lift arm bracket HYDRA-ROD 4000	HCPT21A
7	7/16 side chain (18 links)	HCPT32
8	7/16 side chain (12 links)	HCPT33
9	7/16 side chain (10 links)	HCPT39
10	Cap screw, 5/8 X 2-1/2 grd 5	FCSV.625X2.5
11	Cap screw, 5/8 X 4-1/2 grd 5	FCSV.625X4.5
12	Cap screw, 5/8 X 8 grd 5	FCSV.625X8
13	Lockwasher, 5/8	FLW.625
14	Nut, 5/8	FNT.625
15	Crown lock nut, 5/8	FNTLC.625
16	Anchor shackle, 1/2"	AS.5
17	Lift arm lock (optional)	HCPT2

TELESCOPING BRACES FOR TIC100

ITEM #	DESCRIPTION	PART #
1	Wing wheel swivel	HCPT47
2	3" Telescoping brace	HCPT49-40 HCPT49-50 HCPT49-60
3	2-1/2" Telescoping brace	HCPT50
	2-1/2" Telescoping brace (40')	HCPT50A
4	Spring pin (includes spring)	HCPT96
5	Spring	SP.105X1X5
6	Telescoping brace holder	HCPT54
7	Backup plate	HCPT55
8	Backup plate	HCPT12A
9	Cap screw, 5/8 X 8	FCSV.625X7
10	Lockwasher, 5/8	FLW.625
11	Nut, 5/8	FNT.625
12	Cap screw, 1 X 4	FCSV1X4
13	Lockwasher, 1"	FLW1
14	Nut, 1"	FNT1
15	Hitch pin, 1 X 4-1/2	FHP1X4.5



DATE 3/15

1

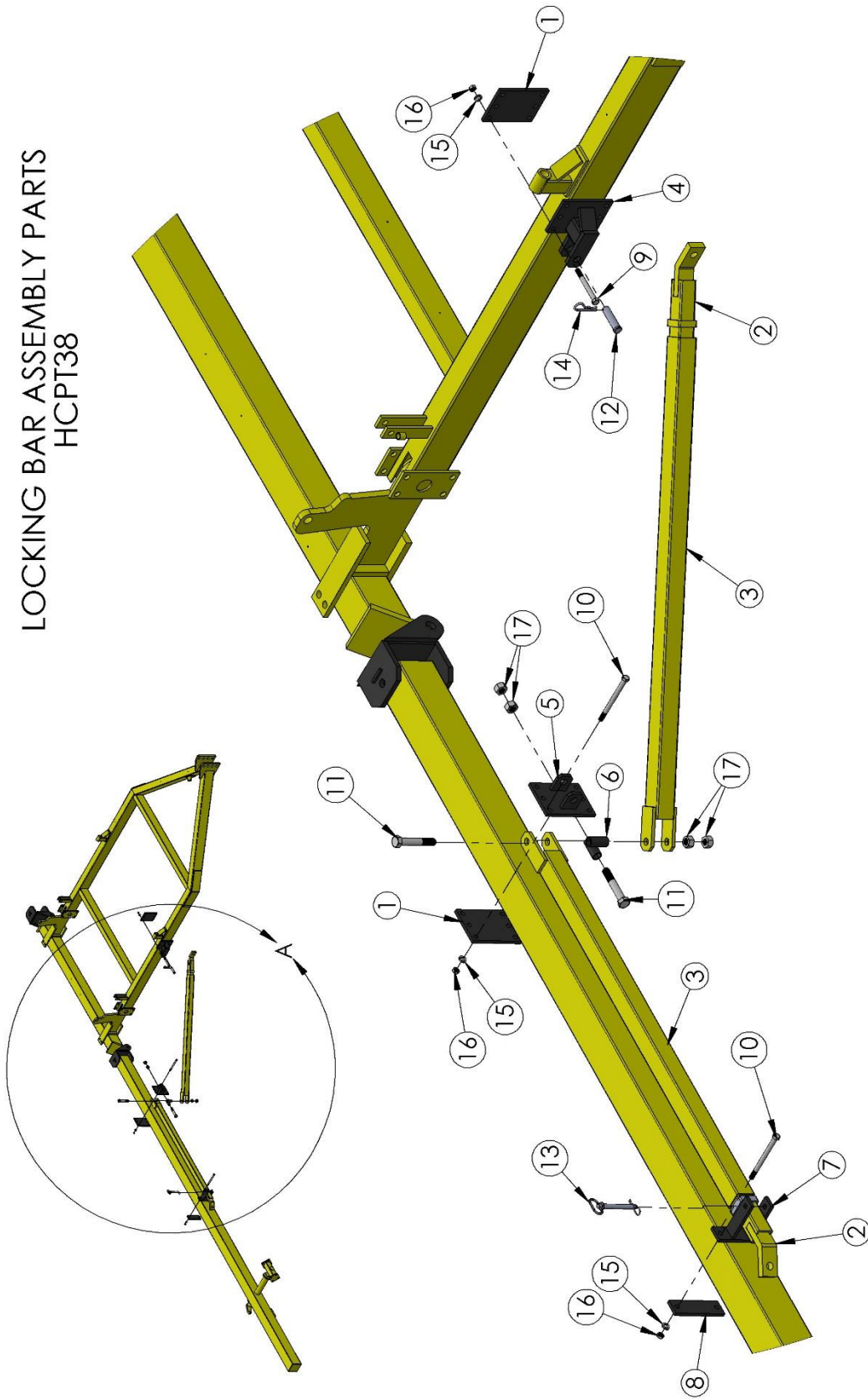
2

3

4

5

LOCKING BAR ASSEMBLY PARTS
HCPT38



DETAIL A
SCALE 1 : 20

DATE 3/15

1 2 3 4 5

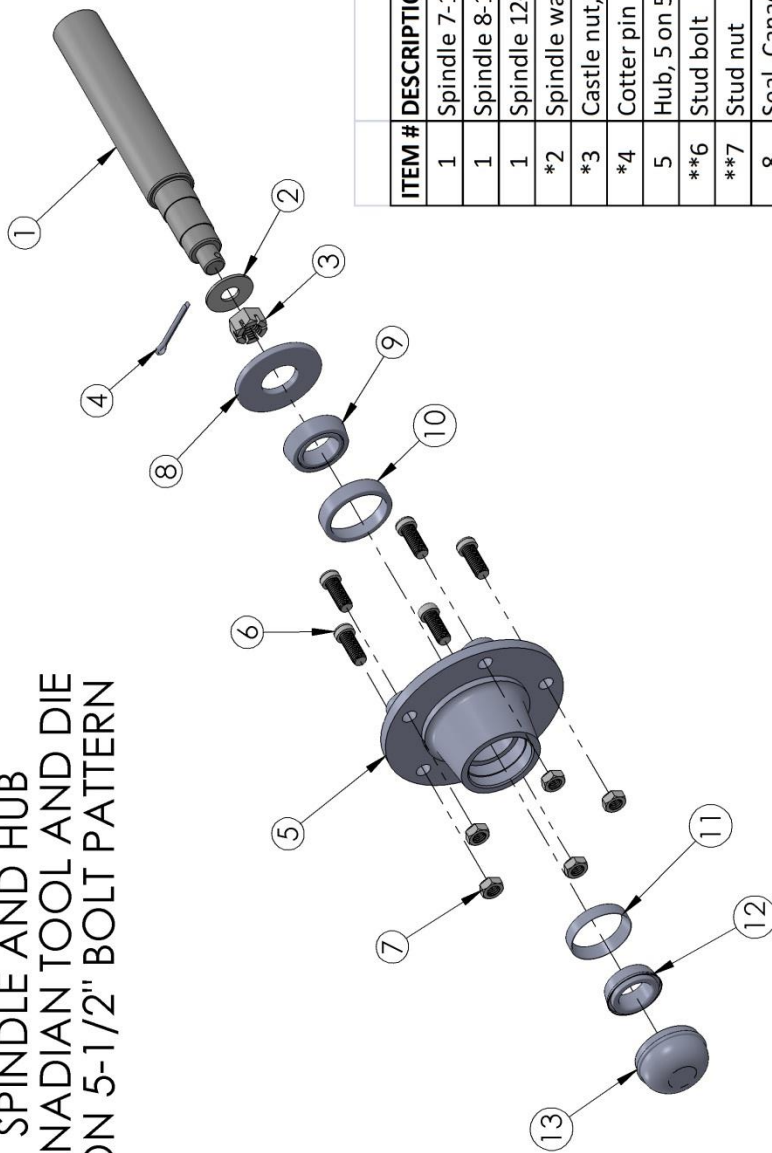
TIC100

HCPT38

LOCKING BAR ASSEMBLY

<u>INDEX #</u>	<u>PART#</u>	<u>DESCRIPTION</u>	<u>QUANTITY/CART</u>
1	HCPT12A	Backup plate	4
2	HCPT25	Locking bar - 1-1/2"	2
3	HCPT26	Locking bar - 3"	2
4	HCPT28	Locking bar brkt.	2
5	HCPT34	Locking bar brkt. Wing	2
6	HCPT35	Locking bar swivel	2
7	HCPT37	Transport bracket	2
8	HCPT55	Backup plate	2
9	FCSV.625X6	5/8 x 6 cap screw	12
10	FCSV.625X8	5/8 x 8 cap screw	16
11	FCSV1X6	1 x 6 capscrew	4
12	FCLV1X4	1 x 4 clevis pin	2
13	FHP.625X4.5	5/8 x 4-1/2 hitch pin	2
14	FHPC1	1" Hair pin clip	2
15	FLW.625	5/8 lockwasher	28
16	FNT.625	5/8 nut	28
17	FNT1	1" nut	8

SPINDLE AND HUB CANADIAN TOOL AND DIE 5 ON 5-1/2" BOLT PATTERN

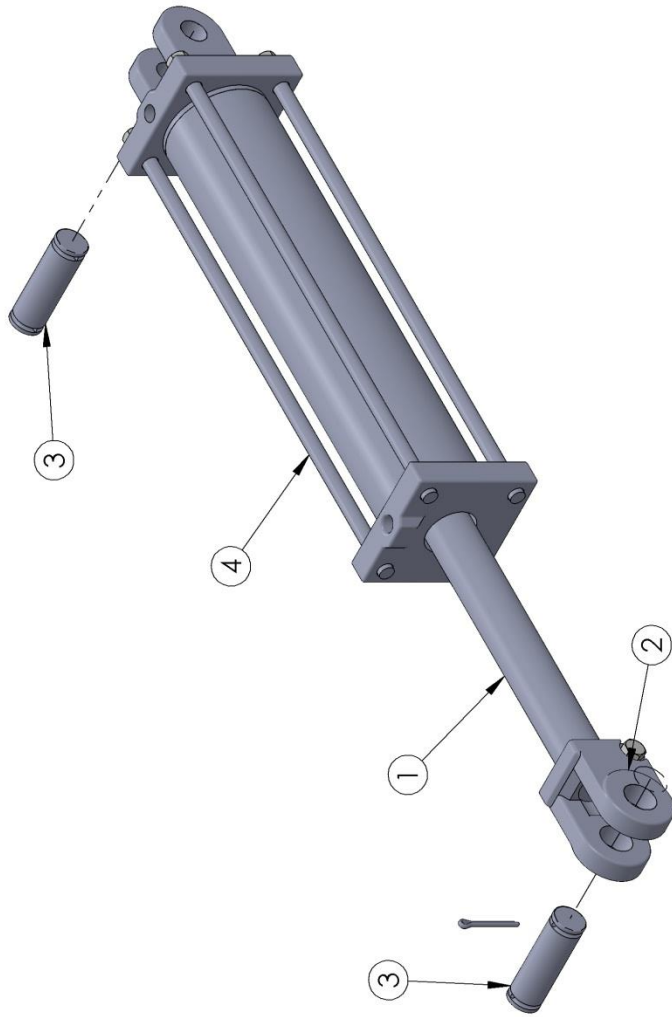


ITEM #	DESCRIPTION	STOESS PART #	CROSS REF. #
1	Spindle 7-1/2" OAL	SP8.5	
1	Spindle 8-1/4" OAL	SP8.25	
1	Spindle 12-1/2" OAL	SP12.5	
*2	Spindle washer	SW2.75	
*3	Castle nut, 3/4"	NUTSPIN.75-16	
*4	Cotter pin	FCOT.188X1.5	
5	Hub, 5 on 5-1/2	HUB5-5.5	
**6	Stud bolt	BOLTSTUD	
**7	Stud nut	NUTSTUD	
8	Seal, Canadian Tool & Die	SEALCTD	CR17618
8	Seal, French & Hecht	SEALF&H	CR15209
8	Seal, Electric Wheel	SEALEWC	CR15190
**9	Inner bearing	BEARL	LM48548
**10	Inner race	RACEL	LM48510
**11	Outer race	RACES	LM67010
**12	Outer bearing	BEARS	LM67048
**13	Hub cap	HUBCAP	
	* Included in spindle		
	** Included in hub		

Check imprint lettering on hub to determine correct seal.

DATE 3/15

1 2 3 4 5



ITEM #	DESCRIPTION	3 X 8 CYLINDER	3-1/2 X 2 CYLINDER	4 X 24 CYLINDER	5 X 24 CYLINDER
1	PISTON ROD	HCYL3X8	HCYL3.5X24	HCYL4X24	HCYL5X24
2	CLEVIS	HCYLSHAFT3X8	HCYLSHAFT3.5X24	HCYLSHAFT4X24	HCYLSHAFT5X24
3	CLEVIS PIN/PINS	HCLEVIS4	HCLEVIS4	HCLEVIS4	HCLEVIS5
4	TIE ROD	HCLVPIN1	HCLVPIN1	HCLVPIN1	HCLVPIN1.25
NP	SEAL KIT	HICYTR8	HICYTR24	HICYTR24	HICYTR24
		HICYK3-3000	HICYK3.5-3000	HICYK4-3000	HICYK5-3000

DATE 3-15

1

2

3

4

5