

HEAVY DUTY (HD)

R&R

**“DRAWN V”
SUBSOILERS**

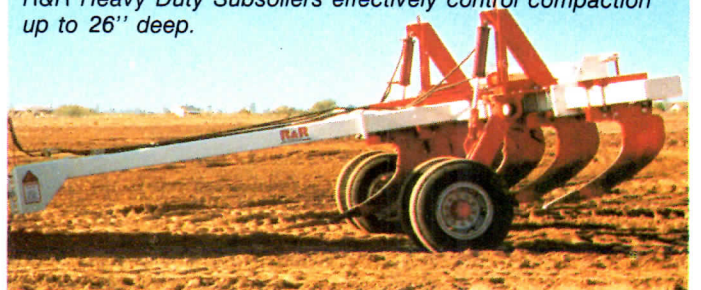
**Productivity
Plus Strength.**



The R&R Heavy Duty Subsoiler.

- Designed for tractors up to 470 HP.
- 26" maximum working depth with the 36"x2" shank.
- 24" to 72" shank spacing to meet any field requirement. (Nine shanks maximum on 30" spacing.)
- Resettable trip shank option available.
- 13 ft. to 21 ft. model widths available.
- The R&R Stoneville Parabolic Shank design has demonstrated an ability to reduce the draft requirements up to 60% over other conventionally designed shanks. When combined with the "Drawn V" frame R&R Subsoilers have produced twice the acreage per day, as compared to other subsoilers.
- Downdraft loading is carried on the 42,000 lbs. split axle assembly, eliminating adverse wear and loading to the tractor final drives, axles, etc.

R&R Heavy Duty Subsoilers effectively control compaction up to 26" deep.



The Stoneville Parabolic Shank has established the reputation for being the easiest pulling shank in the industry

The shank was designed for its "easy pull" characteristics. A 22° angle working face was chosen after extensive lab and field testing. The parabolic curve behind the 22° point is designed to lift, roll and shatter the subsoil. The shank pulls itself into the ground as it is drawn forward creating "positive down draft." This configuration permits deep penetration in all types of compacted soils. The shanks stay in the ground at the selected working depth.

Check these R&R Standard Heavy Duty Features!

Models: The Heavy Duty R&R "Drawn V" Subsoiler is available in standard widths of 13'2" and 17'. Hinged extension assemblies will increase the width to 18' or 21' respectively.

Construction: Main Frame construction of 12"x8"x3/8" heavywall rectangular tubing. Tongue and Tower assemblies are 8"x6"x3/8" heavy wall steel tubing. Grade 8 hardware and Grade 5 shear bolts.

Hydraulic Cylinders: 4"x16" ASAE hydraulic cylinders, with 2" heavy duty shaft, standard with the 36" shank. All cylinders have steel depth control and aluminum travel stops.

Wheels: All units equipped with 42,000 lbs. split axle assemblies. New highway 11-22.5 tubeless tires mounted on 10 hole "Budd" type drop center wheels.

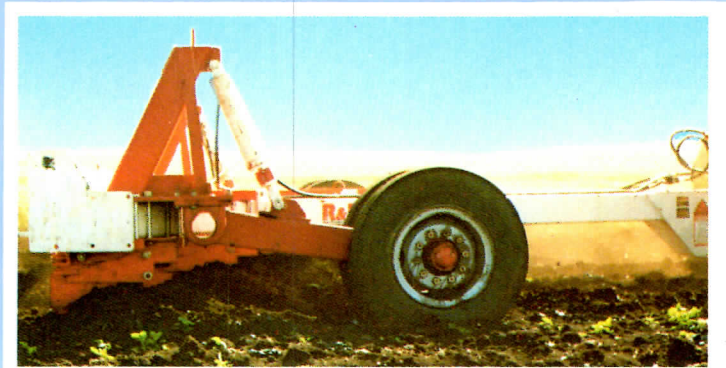
Shanks: Fabricated from 2" high-strength steel plate. All shanks are shear bolt protected and come with a replaceable shin guard.

Points: Self-sharpening "slip-on" T-1 are standard.

Weight: Our standard 13" machine with seven 36" shanks weighs approximately 9,482 lbs. 36" shank weighs 325 lbs.

Options For Almost Any Application:

- 5"x16" HD welded cylinders
- R&R chrome alloy points, for extended life and less draft
- Hard surfaced shank shin guards
- Resettable trip shanks protect shank and brackets, eliminate down time, simply back up to reset
- Hydraulic cylinder mid-stroke lock-up kit
- HD adjustable parking stand
- 42" x 2" shanks available when additional trash clearance is required (42" shank weighs 384 lbs.)



Crawler tractor shown pulling 42" shanks for additional trash clearance.



Trip Shanks eliminate shear bolt replacement and expensive down time. Simply back up machine to re-set.

Model Width	Transport Width	Working Width* With Max. No. of Shanks	Max. No. of Shanks	Spacing (inches)**							
				24"	30"	36"	40"	42"	48"	60"	72"
R-13 HD	13'2"	14'	7 on 24"	3,4,5,6,7	3,5	3,4,5	3	3,4	3	3	3
R-18H HD	13'2"	18'	9 on 24"	3,4,5,6,7,9	3,5,7	3,4,5,7	3	3,4,5	3	3,4	3
R-17 HD	17'0"	17'6"	7 on 30"		3,5,7		3,5		4	3,4	3
R21H HD	17'0"	22'6"	9 on 30"		3,5,7,9		3,5,7		4,6	3,4,5	3

* Feet of ground worked in 1 swath.

** Numbers listed below the shank spacings represent the number of shanks that may be installed at these spacings.

Manufacturer reserves the right to change specifications without notice.

© 1983 R&R Agri-Products, Inc.

Printed in U.S.A.



Sold By:

Stoess Manufacturing Incorporated

225 North Street W

Washtucna, WA 99371

PH (509)646-3292 or 888-771-2314 FAX (509)646-3294

www.stoess.com

stoessmfg@gmail.com