

NGA

N O G R E Y A R E A

CASE STUDY
THAMES CITY, LONDON



ABOUT THE PROJECT

Client: Excell Winner

Location: One Thames City, Nine Elms, London, UK

Project Type: Public Realm & Residential Lighting

Thames City represents a bold and elegant transformation of over 10 acres of former industrial land into a landmark mixed-use development in London's Nine Elms district.

With architecture by SOM and lighting concept developed by Equation Lighting and delivered by Foundry, the project blends urban sophistication with lush, immersive landscapes and high-end amenities across residential towers No. 8 and No. 9. Spanning multiple public and private zones—including landscaped gardens, walkways, lounges, and wellness spaces—the lighting design plays a central role in the sensory and experiential quality of the space. NGA was proud to contribute to the delivery of this award-winning scheme, supplying precision lighting components tailored for both performance and atmosphere.



“Quality is never an accident.
It is always the result of intelligent effort.”



DESIGN, COLLABORATION AND EXECUTION

Working closely with Foundry's Ellie Cozens and Neale Smith, NGA supported the realisation of the Phase 1 lighting vision, delivering over 500 metres of high-performance Fusion Flex LED strip and Neon Flex, along with a bespoke 5.3-metre external circular lightbox positioned at the main entrance.

The project posed a number of technical challenges—particularly in integrating lighting with dynamic landscaping elements, stone architecture, and wellness-focused amenities—while adhering to the premium finish expectations of this high-profile residential destination.

NGA's deep product knowledge and ability to fabricate custom solutions proved key in harmonising form and function across every detail of the lighting scope.



SCOPE OF WORK

500+ metres of LED Strip and Neon Flex

Bespoke External Circular Lightbox

External Landscape Lighting (Courtyards, Pathways, Planting)

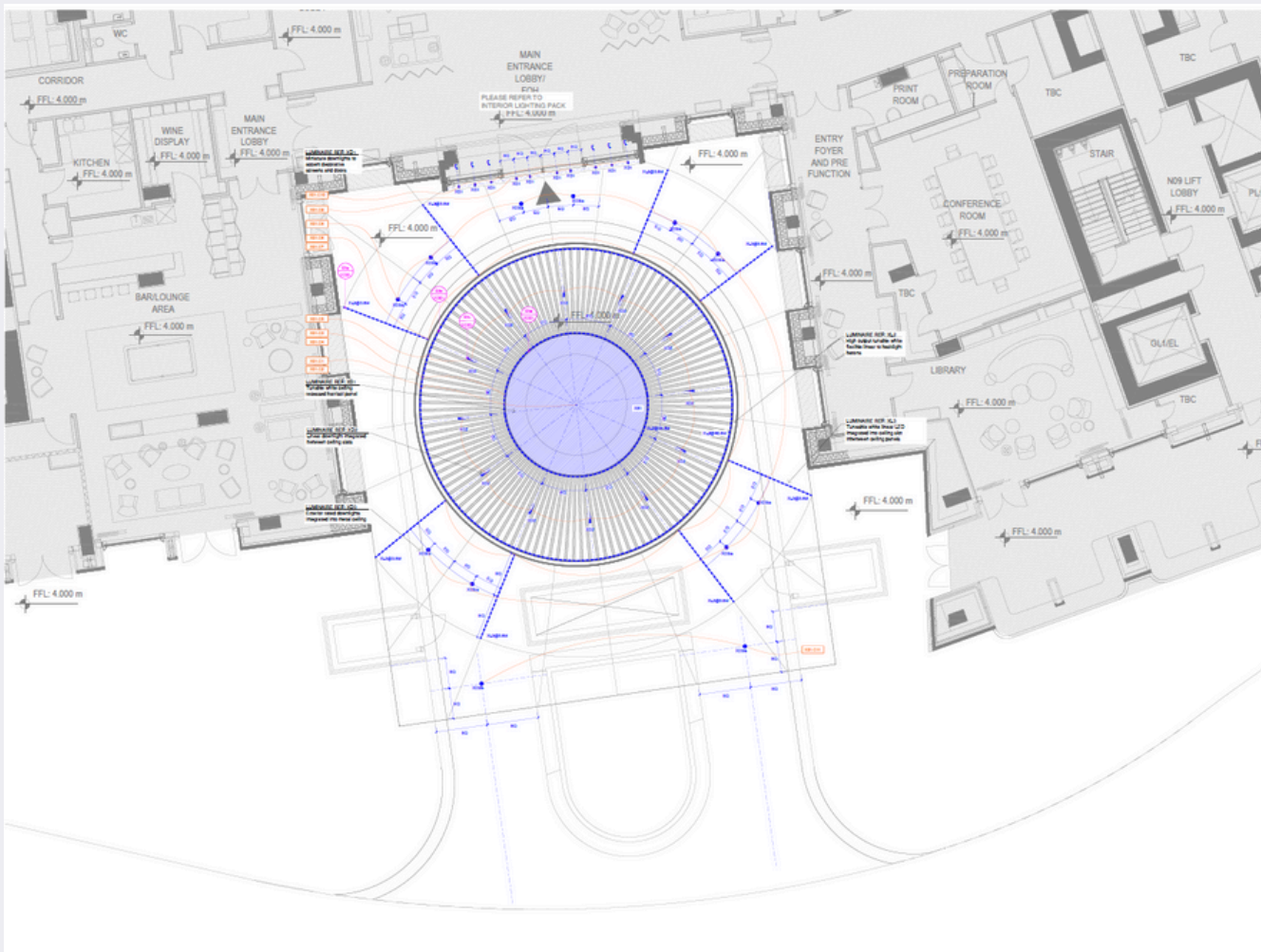
Feature Lighting in Reception, Swimming Pool, and Amenity Areas

NGA TEAM

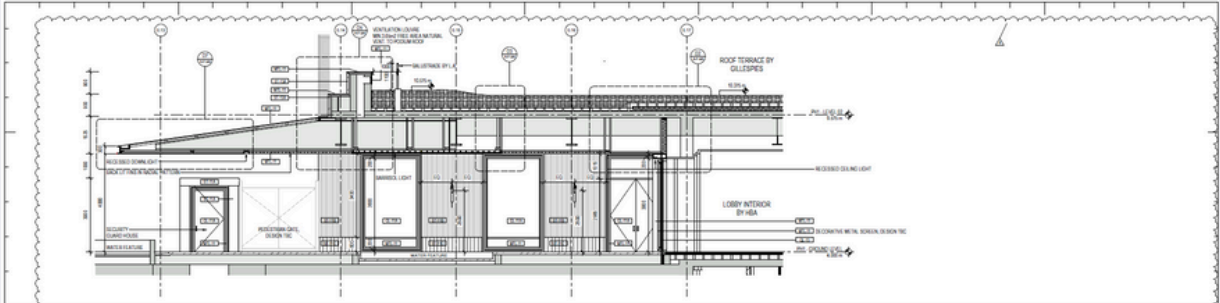
Dan Noronha - Partner at NGA UK

Andy Drees - Partner at NGA

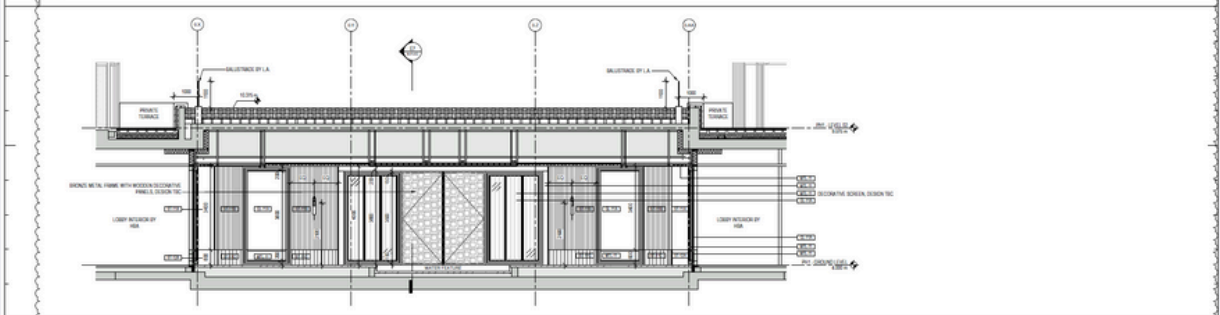
Dan Wilson - Site Manager



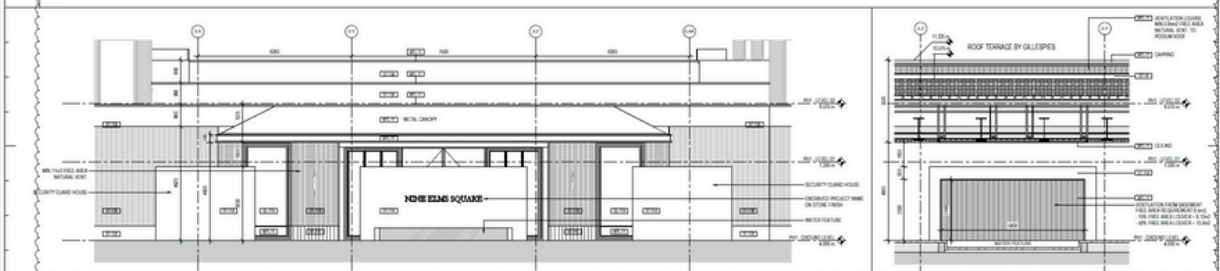
BASE PLAN



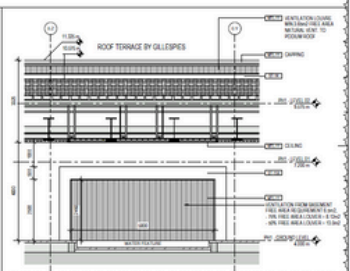
E7 VEHICLE DROP-OFF - ELEVATION



C7 VEHICLE DROP-OFF - ELEVATION



A7 VEHICLE DROP-OFF - ELEVATION



A2 VEHICLE DROP-OFF - ELEVATION

ELEVATION DETAIL



THE ENTRANCE CIRCULAR LIGHTBOX

A key architectural statement, the custom 5.3-metre circular lightbox was engineered and fabricated by NGA to define the main entrance of Thames City. Featuring Fusion Flex Dynamic LED, the lightbox offers a soft, uniform glow with tunable white capabilities that adapt to the surrounding ambient light. It also serves as a wayfinding and identity marker—both functional and artistic—setting the tone for the development's sleek, modern aesthetic. Built for exterior conditions, it was developed with weatherproofing and structural integrity in mind.



UPON COMPLETION



UPON COMPLETION



UPON COMPLETION



UPON COMPLETION



RESIDENTIAL, PUBLIC & LANDSCAPE LIGHTING

Throughout the project's residential amenities, public zones, and outdoor courtyards, NGA supplied and integrated a mix of Fusion Flex LED strip and Neon Flex lighting. From softly lit pathways and planting beds to warm, welcoming ambient lighting in the reception and wellness areas, the goal was to enhance both usability and atmosphere. These carefully placed fixtures highlight architectural textures, support intuitive wayfinding, and enrich the sensory environment—particularly after dark—by encouraging residents and visitors to slow down and enjoy the surroundings.



UPON COMPLETION



UPON COMPLETION



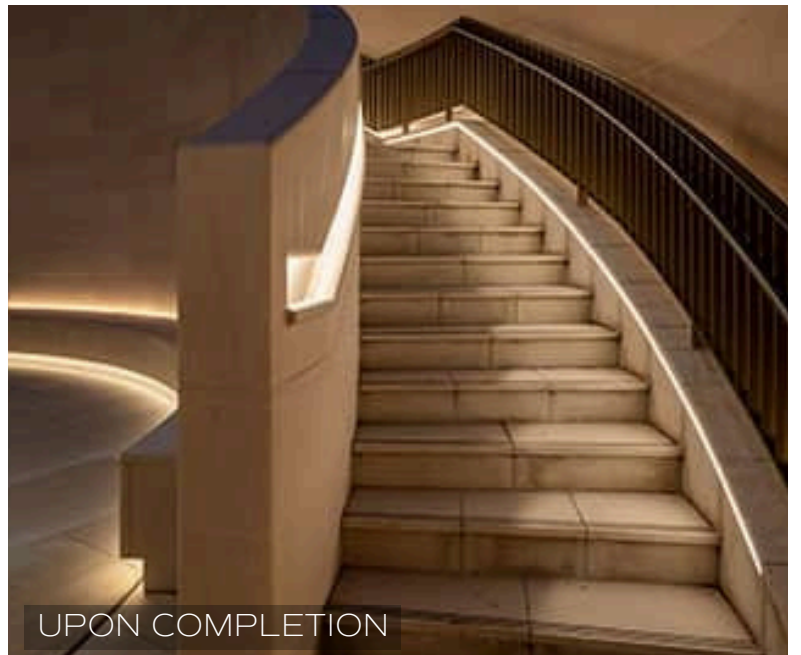
UPON COMPLETION



UPON COMPLETION



UPON COMPLETION



UPON COMPLETION



UPON COMPLETION



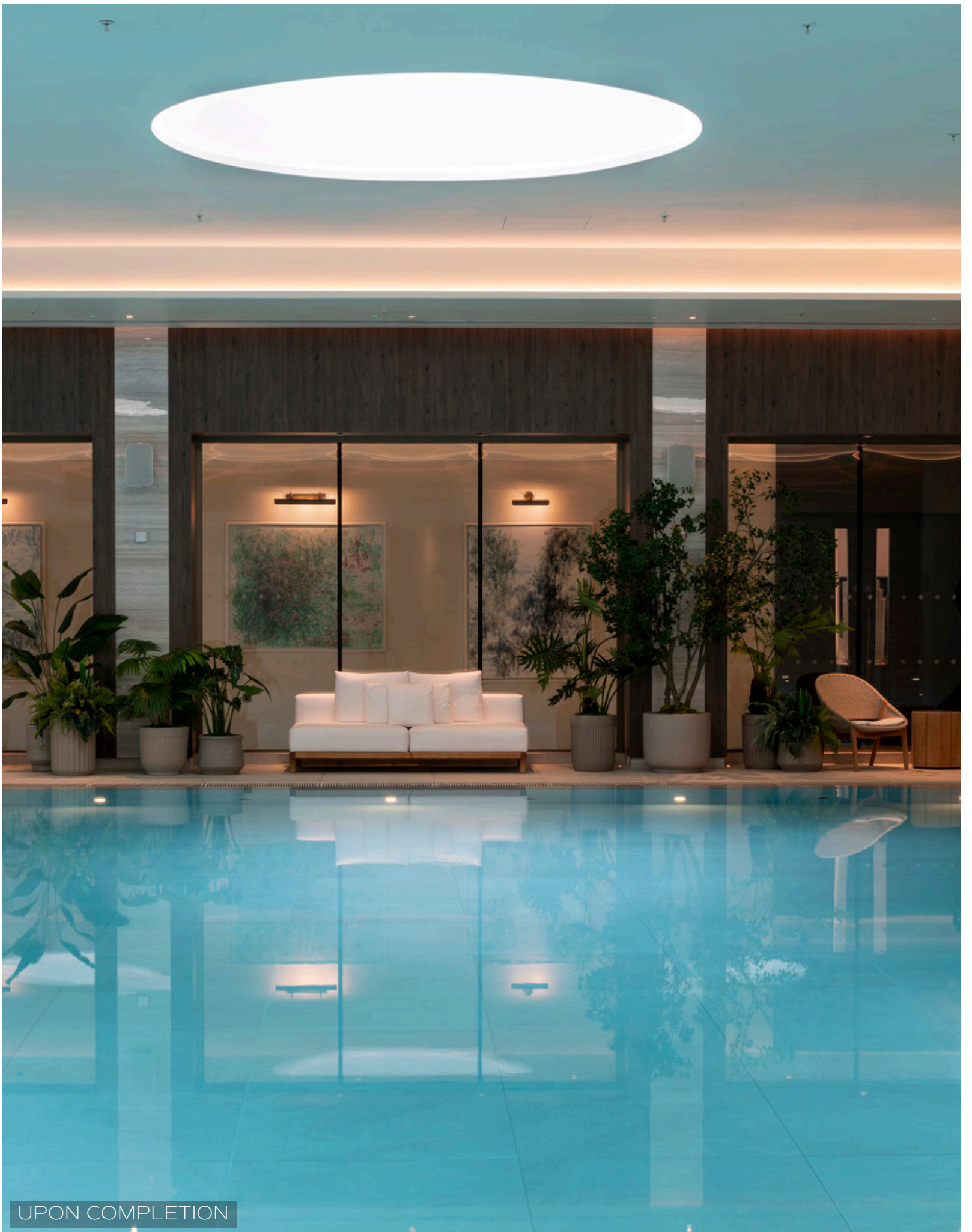
UPON COMPLETION



THE FINAL OUTCOME

Today, Thames City stands as a multi-award-winning development, recently taking home Best of the Best and the Spaces category at the @darc_awards. NGA's contribution helped shape an immersive lighting experience that brings warmth, clarity, and rhythm to the public realm—enhancing wayfinding, highlighting landscape features, and reinforcing the project's identity long after dark.

This collaboration between NGA and Foundry demonstrates how technical lighting supply can directly contribute to award-winning placemaking, elevating both function and atmosphere through tailored, beautifully integrated solutions.



UPON COMPLETION



UPON COMPLETION

Thames City
London, UK



A former industrial site, turned luxurious, 10-acre, mixed-use development, Thames City brings a healthy dose of greenery to London's Nine Elms; arc speaks to Foundry about the site's lighting design, following its Best of the Best success at the d|arc awards.

058 / 059



Cosens adds: "We wanted to make the lighting purposeful. Something that we did quite successfully on this project was define what we actually needed from the lighting. We challenged what you might typically do, especially with regards to street lighting on the surrounding roadways. We looked at the categorisation, but dug into it a bit further. We knew that we needed uniformity, but we asked ourselves: if there was a cleverer way of doing things? Is there a better thing that directs light downwards, that is not overly bright or reflecting light upwards? It was the same with the facade lighting as well. Although the buildings were massive, they had quite minimal facade lighting. We wanted to light the top band, and all of the lighting was designed at prefix angles, so it only caught certain bits of the metal in a certain way, and reduced all of the upward spill of light. These little details all came together to make sure that, although we were keeping to the dark sky requirements and trying to reduce the light pollution, we were also not losing all of the vertical illumination."

Smith continues: "We worked really closely with the planners to minimise any light spill from upward light. Where we've got lights around the perimeter of the building that are uplighting the facade, they are all angled, even at pedestrian level, so that there's nothing going straight up into the sky. There are also a lot of capping details around the building that limit upward light spill. We also worked with the lighting manufacturers to get the right optical control, and making sure when we were lighting the roads, there was nothing spilling back onto pavements - we had quite a harsh cutoff with zero back spill. Everybody across the board thought about these things, whenever directly or indirectly."

This joined up thinking is just one of the ways in which Foundry feel that they worked well with Midgard, and the wider design team. Cosens explains the collaborative nature of the project further: "The best projects are those where everyone accepts each other's skillset and their expertise. It's not to say that there weren't disagreements, especially when it came to costs, but when we put the case forward for the cost, explain it, and educate the client, they were understanding."

"A lot of people in construction now have an understanding of lighting that maybe they didn't have ten years ago - they understand lux levels and uniformity, but they also acknowledge that there is a little bit more that goes into it. Yes, we can tick a light level box, but is it going to be pleasant? Is this lighting creating a sense of security and safety? These are the moments where our experience comes in and we have to educate the client. In this instance, they were very open to it; sometimes it's a challenge, but here it was a lot easier."

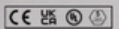
"We were really involved in every intimate detail, for our side in some ways, but it meant that the design that we had agreed on day one, we were able to deliver and maintain across the board, which is really hard to do in this day and age. It was challenging, but it was definitely something that, in the end, resulted in a better outcome." That's not to say that this project wasn't without its challenges. The biggest of which, according to Smith, was bringing it all to life in the middle of the pandemic. With work starting in the summer of 2020, the knock-on effects of prolonged lead times - sometimes taking up to six months for fixtures to be delivered - meant that, while some parties were keen to keep the project on target, the pandemic led to frustrating delays.

NGA
NO GREY AREA

FUSION SERIES: ADVANCED LINEAR AND FLEXIBLE LIGHTING

- ▶ Up to 195lm/W and CRI: 98+ on request
- ▶ Versatile options: Dim to Warm, Dynamic White, Colour changing, Pixel, & Dot-Free
- ▶ Wide range of formats, outputs, CCTs & IP ratings
- ▶ Fully dimmable and compatible with DALI, DMX & 0-10V systems
- ▶ Tight binning for colour consistency
- ▶ Tested to recognised international standards
- ▶ Long lifetime and consistent performance
- ▶ Custom solutions to meet project requirements

NGA supplied over 500m of LED Strip and Neon flex throughout Thames City's public and external spaces, including the entrances, courtyards, reception, swimming pool and landscaped areas, along with custom Circular Lightbox.

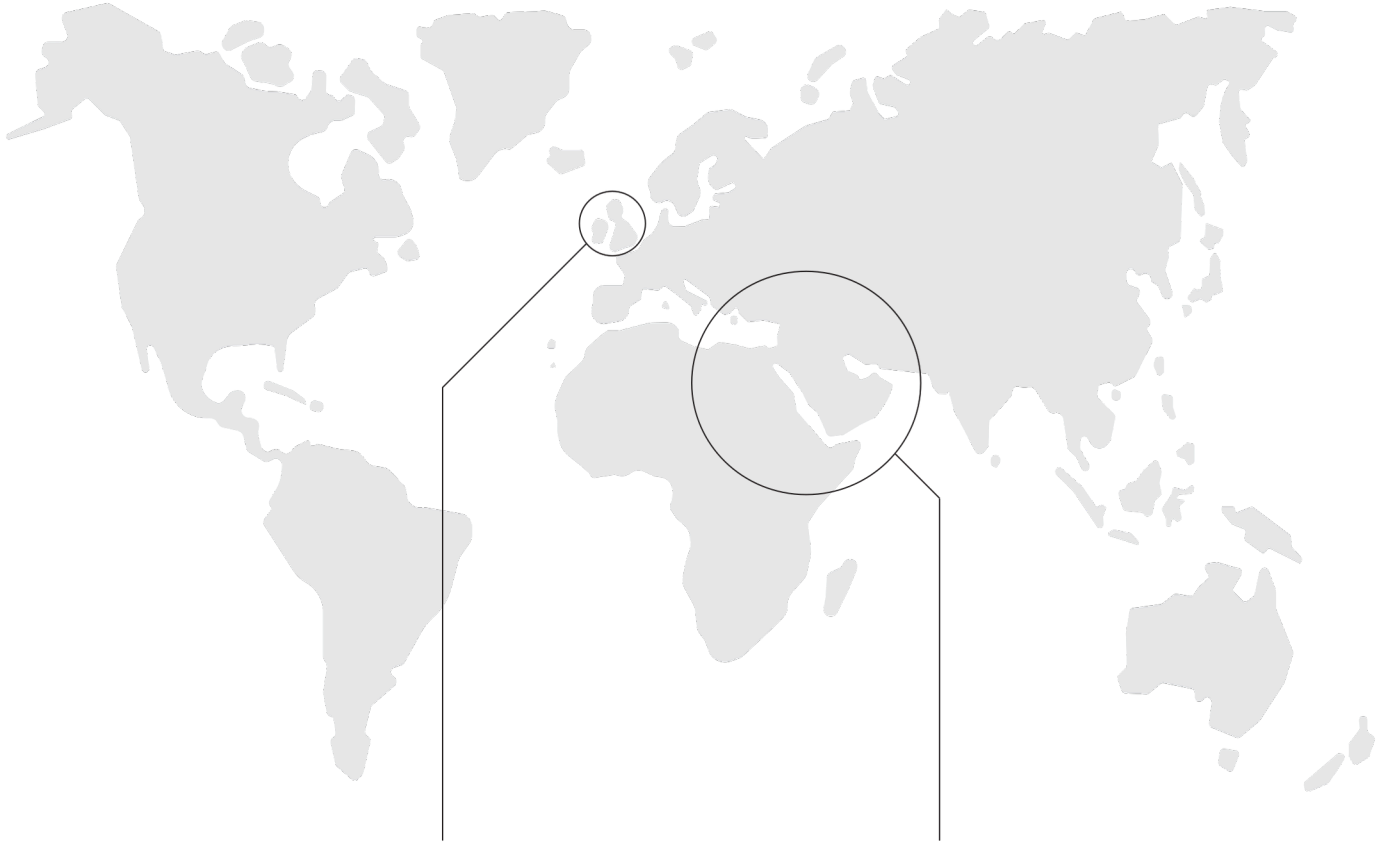


EUROPE & AMERICA HQ
T: +44 (0) 1276 656175
E: info@no-grey-area.co.uk
MENA REGION HQ
T: +971 (0) 433 35300
E: info@no-grey-area.me



www.no-grey-area.com

CONTACT US



NGA EUROPE & AMERICA

Unit 5, Hawley Lane Industrial Estate,
Farnborough, Hampshire, GU14 8EH
T: +44 (0)1276 686 175
E: Info@nogreyarea.co.uk



MENA REGION (UAE, KSA, EGYPT)

S01, 26th Street, Al Quoz Industrial 4th
Dubai, UAE, PO Box no. 449839
T: 800 664739
E: info@nogreyarea.me