



COORDINATING MINISTRY FOR ECONOMIC AFFAIRS  
REPUBLIC OF INDONESIA



**BIMP-EAGA**  
BRUNEI DARUSSALAM—INDONESIA—MALAYSIA—PHILIPPINES  
EAST ASEAN GROWTH AREA

# Indonesia-EAGA Eminent Opportunities

---

5<sup>th</sup> BIMP-EAGA Chief Ministers, Governors, and Local Governments' Forum

Brunei Darussalam, 25<sup>th</sup> October 2023



Courtesy of Presidenri.go.id

**NUSANTARA (Indonesia New Capital)  
development**

## Investment Opportunities

1

**Nusantara– Indonesia New Capital  
Development Plan**

2

**Competitive Industries**

- **Cocoa Processing Industry**
- **Livestock supply chain**

3

**Renewable Energy**

Windfarm and Hydro Powerplant

## Proposed Collaboration

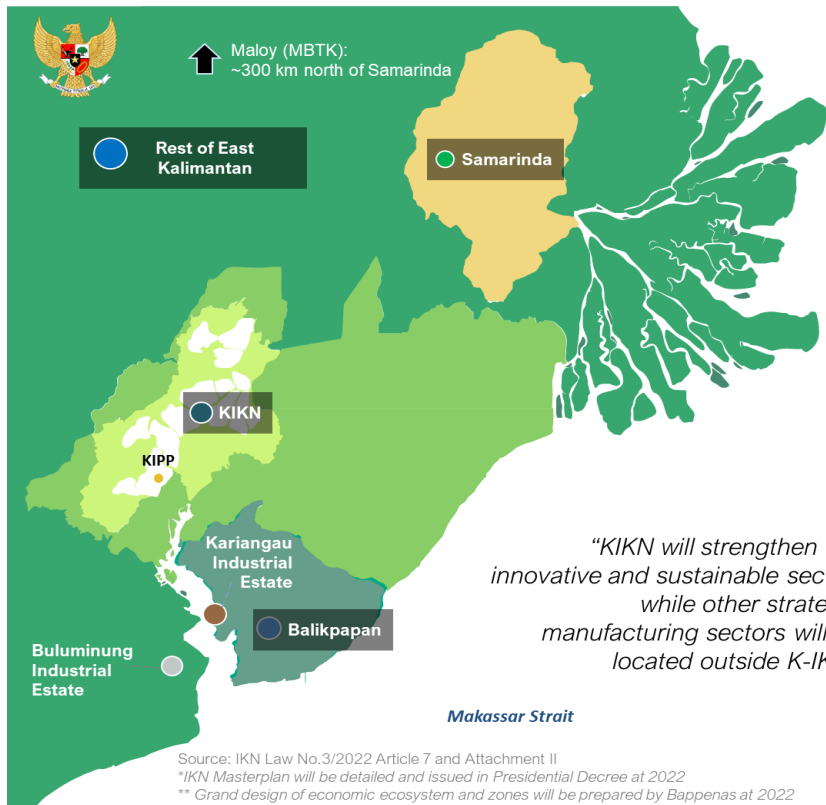
3

**Connectivity Projects**

- **Tanjung Silopo (Indonesia)**
- **Cross Border Infrastructure**
- **Sorong Port – East Indonesia Hub**

# NUSANTARA CAPITAL CITY MASTER PLAN

## Economic Clusters, Enablers, and Industrial Estates In Kalimantan



### K-IKN (56.180 Ha)

- 21st Century Education
- R&D and innovation center for Disruptive Low Carbon Energy
- Eco-Tourism and Wellness, Medical Tourism, Urban Tourism/MICE, Agrotechnology
- R&D and innovation center for Integrated Pharmaceutical

### Samarinda

- Disruptive Low Carbon Energy
- Sustainable Mining dan Coal Gasification

### Balikpapan

- Integrated Pharmaceuticals
- Advanced Chemicals: Petrochemical
- Next Gen Renewable Manufacturing

### Kariangau Industrial Zone

- Advanced Chemicals: Petrochemical
- Next Gen Renewable Manufacturing
- Integrated Pharmaceuticals

### Buluminung Industrial Zone

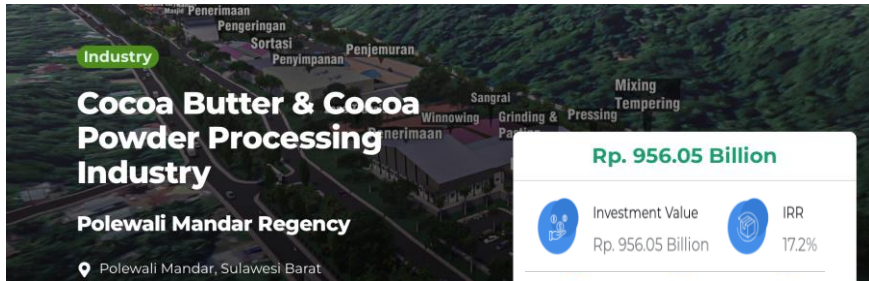
- Sustainable Agri Industries
- Advanced Chemicals: Oleochemical
- Disruptive Low Carbon Energy: Biofuels

### Maloy Batuta Trans Kalimantan (MBTK)

- Disruptive Low Carbon Energy: Biofuels
- Advanced Chemicals: Oleochemical



# Cocoa Processing Industry



## PROFILE

Cacao processing industry

**NILAI INVESTASI**  
Rp 956,05 miliar

Land Area: 10 Hectare

**LOCATION**  
Desa Kujang, Kecamatan Binuang, Kabupaten Polewali Mandar, Provinsi Sulawesi Barat

**OUTPUT CAPACITY**  
Lemak kakao (Cocoa Butter) 12.250 ton/tahun  
Bubuk kakao (Cocoa Powder) 12.250 ton/tahun.  
Kulit kakao (Cocoa Shell/Husk) 10.050 ton/tahun.

**RAW MATERIAL AVAILABILITY**  
33.438 TON/YEAR

### Potensi Bahan Baku Sulawesi Barat

- Kab. Pasangkayu (2019)  
Luas Areal Kakao: 12.802 Ha  
Produksi: 5.837 ton
- Kab. Mamuju Tengah (2019)  
Luas Areal Kakao: 14.851 Ha  
Produksi: 5.839 ton
- Kab. Mamuju (2019)  
Luas Areal Kakao: 39.681 Ha  
Produksi: 10.411 ton
- Kab. Mamasa (2019)  
Luas Areal Kakao: 14.959 Ha  
Produksi: 7.231 ton
- Kab. Majene (2019)  
Luas Areal Kakao: 13.159 Ha  
Produksi: 8.528 ton
- Kab. Polewali Mandar (2019)  
Luas Areal Kakao: 48.930 Ha  
Produksi: 33.438 ton



## INCENTIVES

- Super Tax Deduction
- Tax incentives
- Import duty exemption



## ACCESSIBILITY

### Aksesibilitas dari Lokasi Proyek

- JALUR DARAT**
  - Jalan Trans Sulawesi (1,20 km)
  - Kota Makassar (245 km)
- JALUR LAUT (PELABUHAN KARGO)**
  - Pelabuhan Tanjung Silopo (14,50 km)
  - Pelabuhan Nasional Poropora (62,20 km)
  - Pelabuhan Makassar (245 km)
- JALUR UDARA**
  - Bandara Tampo Padang Mamuju (229 km)
  - Bandara Sultan Hasanuddin Makassar (245 km)

→ On the world market, Indonesia is in the top 6 world cocoa producers.

- Kuajang Village in Binuang District, a potential location for an integrated cocoa plantation industry. 105 Ha Plantation Area and 5 Ha Non-Irrigation Ricefield Are;
- Very close to the source of raw materials, the availability of supporting infrastructure such as electricity supply up to 50 MW from the Polewali Mandar substation, the development of the trans Sulawesi railway line, and the Tanjung Silopo port which is only 14.5 km from the location.
- In 2022 in Polewali Mandar district the cocoa plantation area will be the largest plantation area.
- Taramanu amounted to 5,559.98 tons, Tapango District amounted to 4,724.06 tons and Bulu District amounted to 4,632.53 tons. The area of cocoa plantations in Polewali Mandar is 48,929.50 Ha. Spread across 16 sub-districts, with production of 36,482.54 tonnes.

**Cocoa Beans from Polewali Mandar have penetrated to the Japanese Market.**



## INTEGRATED LIVESTOCK SUPPLY CHAIN

Integrated Livestock and Frozen Meat Supply Chain in Australia – Malaysia (Sarawak) – Indonesia (West Kalimantan):

- Livestock from Rosewood Station and Carmour Plains Station in Australia (Australia Licensed Exporter)
- Through Feedlot and Abattoir in Sarawak, Malaysia (PPES Ternak SDN BHD)
- Processing into Final Products in Indonesia (Borneofood Indotama- Indonesia Exporter)



## Green Energy

Currently in South Sulawesi, has a surplus of around 460 MW and the potential in the future could exceed 1000 MW **generated from renewable energy resources.**

→ South Sulawesi has 2 major wind power plant, In 2019, Wind Power Plant Janeponto with a capacity of 72 MW and Wind Power Plant Sidrap of 75 MW.



Wind Power Plant  
**JENEPONTO**



Wind Power Plant  
**SIDRAP**

**Hydro Power Plant** with a capacity around 750 MW



Larona



Balambano



Karabbe



Bakaru



Karalloe

### New Projects



Pamukkulu

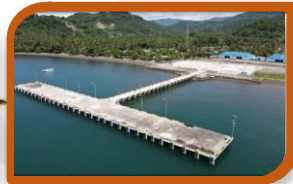


Passaloreng



## People to People Connectivity | TANJUNG SILOPO

### REGIONAL FEEDER PORTS



### Background

- ❑ Tanjung Silopo Port has a strategic position in the Indonesian Archipelago Sea Channel (ALKI) II Makassar Strait
- ❑ It is also included in National **Sea Toll Route**
- ❑ It has been declared a port of embarkation and disembarkation for Migrant Workers Indonesia (PMI)
- ❑ It has great potential in people-to-people connectivity
- ❑ The Polewali Mandar Regency Government has collaborated with the Lahad Datu Government to develop people-to-people (worker) connectivity
- ❑ With the readiness of CIQS and other supporting facilities, **the first cruise from Tanjung Silopo to Lahad Datu is scheduled in December 2023**



## Cross Border Infrastructure



### National Cross-Border Post/PLBN

West Kalimantan Have 5 National Cross-Border Posts/PLBN :

- ❖ 3 PLBN Existing (Entikong-Sanggau, Aruk-Sambas dan Badau-Kapuas Hulu)
- ❖ 2 PLBN on Process (Jagoi Babang-Bengkayang dan Sei.Kelik-Sintang)

### International Goods Terminal/TBI

West Kalimantan Have 3 International Goods Terminal/TBI :

- ❖ 1 TBI Existing (Entikong-Sanggau,)
- ❖ 2 TBI on Process (Aruk-Sambas dan Badau-Kapuas Hulu)



## Sorong Port as a Hub of Eastern Part Indonesia



- The Port of Sorong is one of the gateways for sea transportation in Papua Provinces that has a very large contribution to support exporters' business activities and to support the economic growth.
- The concept of the port development will be followed by the development of an Integrated People's Port with a Tourism Port, the construction of passenger terminals, docks, offices, hotels and other marine tourism supporting buildings that will go to the Raja Ampat area.

## Supporting Industries

### Fish Canning Industry

📍 Sorong, Papua Barat Daya

Economic Zone



Investment Value  
Rp. 1.67 Trillion



IRR  
27.58



NPV  
Rp. 321.44 Billion



### Live on Board (LoB) Raja Ampat

📍 Rajaampat, Papua Barat Daya

Pariwisata



Investment Value  
Rp. 27.74 Miliar



IRR  
12.68



NPV  
Rp. 43.07 Miliar





COORDINATING MINISTRY FOR ECONOMIC AFFAIRS  
REPUBLIC OF INDONESIA

— Thank You  
**Terima Kasih**