

## B20S B20 Series Handheld Thermal Camera



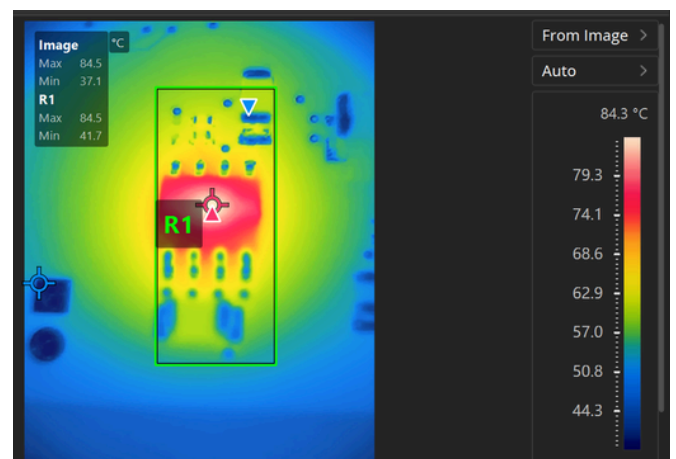
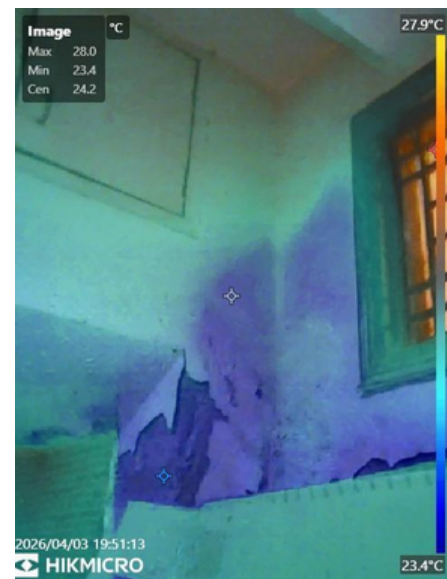
### High Resolution Thermography for Building, HVAC, and Auto Diagnostics

The B20S is an advanced, handheld thermography camera engineered to quickly find hotspots & accurately measure targets across the building, HVAC, and auto industries. Driven by a 256x192 resolution thermal detector and enhanced by SuperIR image enhancement technology, it delivers striking clarity and precision across both live-view & captured images.

Whether you are hunting down hotspots in motors, pumps, solar panels or electrical panels, the B20S combines a 2MP optical camera with thermal imaging—utilizing Thermal, Visual, Fusion, and PIP modes—to provide the exact visual context needed for pinpointing heated components and ensuring on-site safety.

#### Key Highlights

- **SuperIR Image Enhancement:** Instantly upscale your thermal resolution from a native 265x192 (49,152 pixels) for unmatched detail.
- **Advanced Desktop Analysis Software:** Plot live temperature graphs with the advanced analysis software. Up to 32 customizable analysis shapes or spots can be added during image/video analysis with csv/pdf report export.
- **Multi-mode Imaging & 2 MP Visuals:** Combine a 2MP optical camera with thermal imaging across four distinct image modes: Thermal, Visual, Fusion, and PIP to easily pinpoint hidden hotspots.
- **Video Recording & Fluid 25 Hz Refresh Rate:** Record ~300 hrs of video and enjoy smooth, real-time panning without the lag found in standard 9 Hz cameras.
- **Built for the Field with 6 hours of battery life:** Features a rugged IP54 rating, a 2-meter (6.56 ft) drop test certification and 64 GB internal flash memory (storing ~80,000 images).



# Technical Specifications

Infrared Image		Image Display	
IR Resolution	256x192 (49,152 pixels)	Visual Camera	1600 × 1200 (2 MP)
SuperIR	Yes, on captured images & live view	Display	480x640 Resolution, 3.2" LCD Screen
NETD	< 40 mK (@ 25 °C, F#=1.0)	Screen Brightness	Manual
Image Frequency	25 Hz	Data Storage & Communication	
Detector Pitch	12 µm	Storage Media	Built-in 64 GB eMMC
Focal Length	3.6 mm	Image Storage Capacity	80,000+ Images
Spectral Range	7.5 to 14 µm	Image File Format	Radiometric JPEG
F-number	F1.0	Video Storage Capacity	MP4 Approx. 310h, HRV Approx. 90h
Field of View (FOV)	37.2° x 50.0°	Video File Format	MP4, HRV
Spatial Resolution (IFOV)	3.3 mrad	Radiometric Infrared-Video Streaming (Compressed)	Over UVC and Wi-Fi
Min. Focus Distance	0.3m (0.98 ft)	General	
Focus Mode	Focus Free	Wi-Fi	802.11 b/g/n (2.4GHz)
Measurement & Analysis		USB Interface	USB Type-C
Object Temperature Range	Range -20°C to 150°C (-4°F to 302°F) Range 100°C to 550°C (212°F to 1022°F)	LED Light	Yes
SuperScene Mode	Custom, Water Leak, Insulation, Floor Heating, Electrical Faults, Solar Panel, Macro Mode, Insulation Pro, Condensation	Power Supply	USB-C (5V/2A)
Smart SuperScene Alarm	Water Leak, Insulation, Floor Heating	Battery Type	Rechargeable Li-ion battery
Alarm	More than, Less than	Battery Operating Time	Approx. 6 hours
Alarm Linkage	Flashing Alarm, Audible Warning, Alarm Mode Palettes	Battery Charging Time	Approx. 3 hours fully charged
Temperature Measurement Mode	Measurements presets (center spot, max spot, min spot, off)	Protection Level	IP54
Accuracy	Max. (± 2°C/3.6°F, ± 2%), for ambient temperature 15°C to 35°C (59°F to 95°F) and object temperature above 0°C (32°F)	Drop Test Height	2m (6.56 ft)
Level and Span Mode	Auto/Manual	Working Temperature Range	-10°C to 50°C (14°F to 122°F)
Color Palettes	White Hot, Black Hot, Rainbow, Ironbow, Red Hot, Fusion, Blue Yellow	Storage Temperature Range	-20°C to 60°C (-4°F to 140°F)
Image Modes	Thermal / Visual / Fusion / PIP	Relative Humidity	< 95% non-condensing
		Weight	Approx. 380 g (0.84 lb)
		Dimensions	221.7 × 73.5 × 123.8mm (8.73 × 2.89 × 4.87 in)
		Tripod Mounting	UNC ¼"-20
		Packing List	Camera (x1), QSG (x1), USB2.0 A to USB Type-C cable (x1), Wrist Strap (x1), Calibration Certificate (x1)