

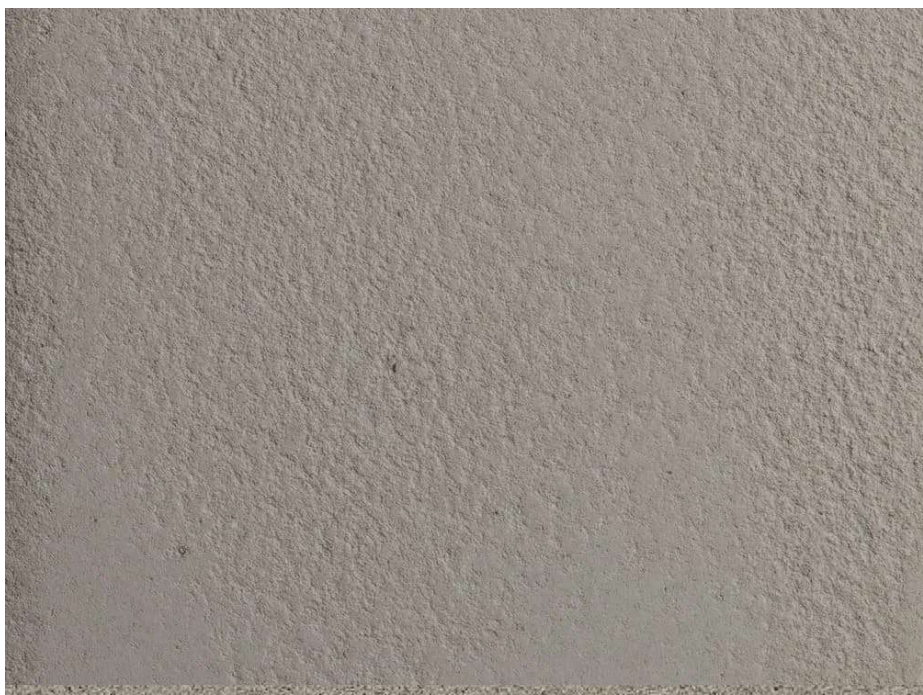


EPISODE 1

CURIO

Quiet luxury is refined
artistry—where texture,
detail, and elegance
speak softly yet
profoundly.



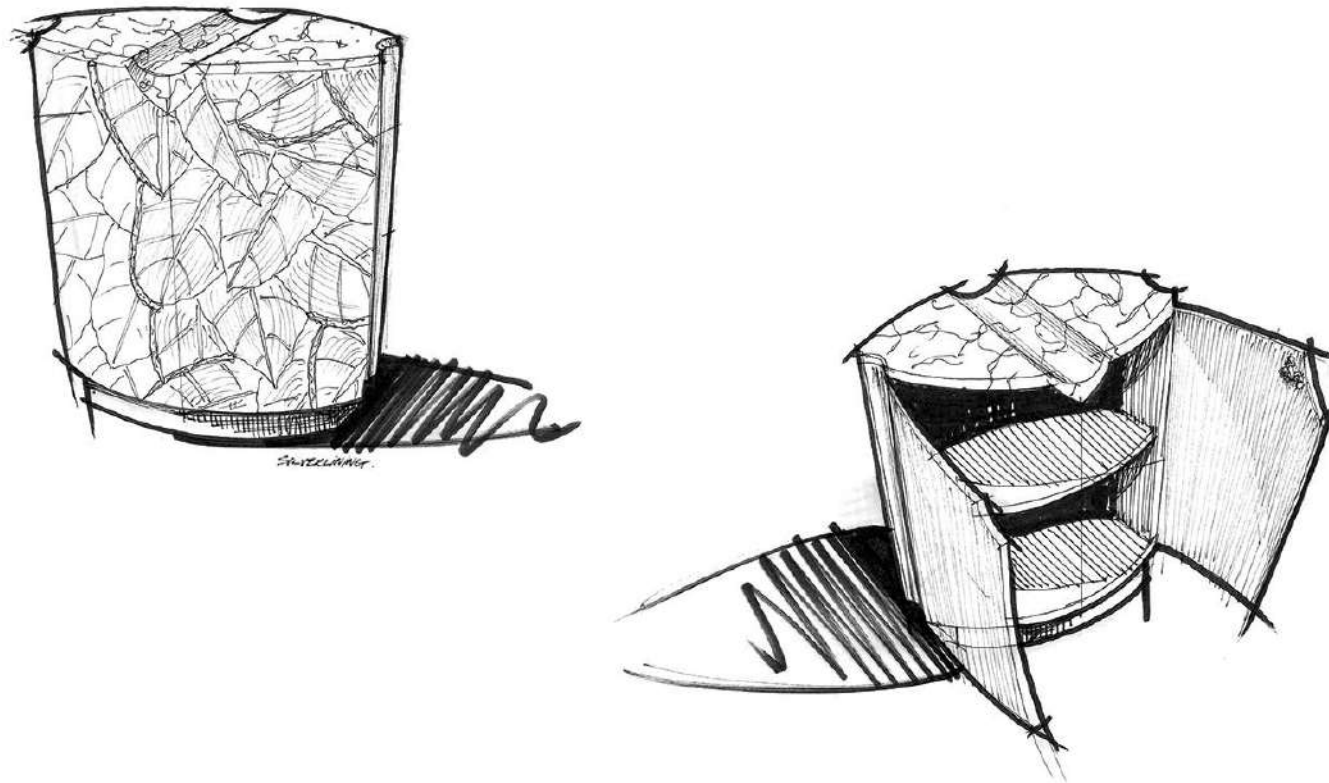


GRY-03

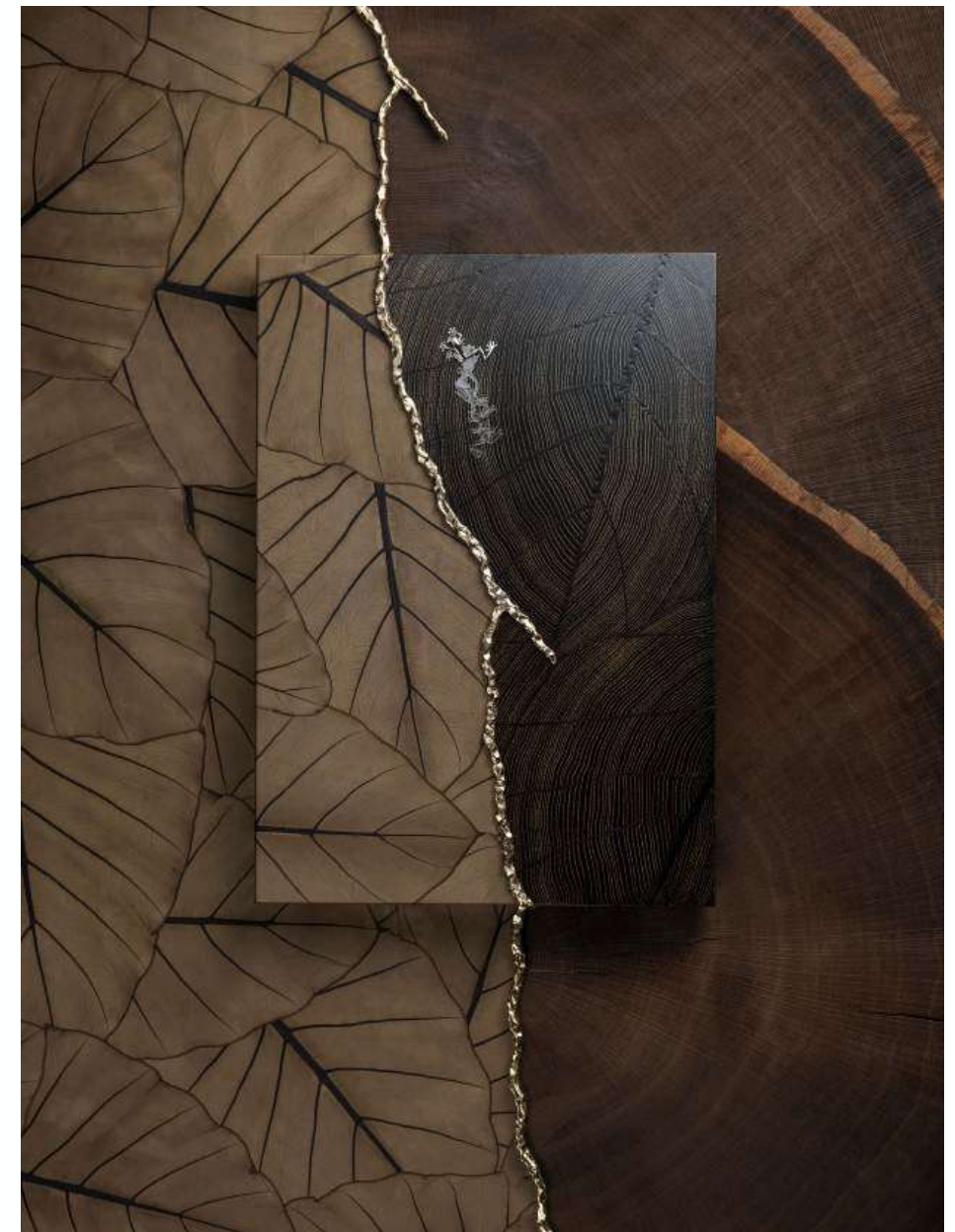


Bodhi leaves come from the sacred fig tree, a central symbol in Buddhism and known for its therapeutic properties found in the bark, roots, leaves and fruits.

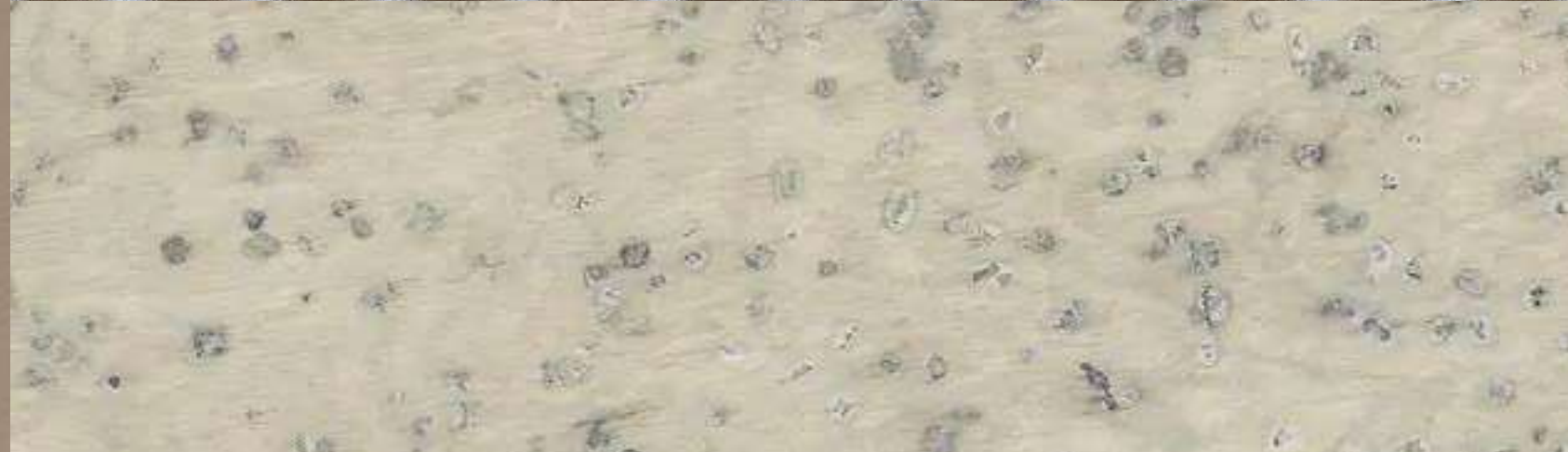
Materials: Skeleton bodhi leaves, sycamore.



The LeafFrog leather design sees natural leaves from the Elephant Ear plant transformed into a durable, elegant leather alternative, using organic resins and polymers.



Materials: Natural BeLeaf Elephant Ear Fabric, 22ct Yellow Gold Leaf, Dubai Gold Liquid metal, Fumed Oak Oysters and 925 Sterling Silver.





SLIM CORRUGATED

A slimline variation of our Corrugated design, this custom finishes hinges on rows of tight, parallel ridges. The slimmer lines produce a beautiful and changing interplay of light and shadow.

AESTHETIC OPPORTUNITIES

With a 35mm pitch and lighter 10mm relief, Clayworks slim corrugated finishes can be crafted in our range of natural pigments, and are best shown where swathes of natural light can enhance the repeating, gentle curves.

BENEFITS

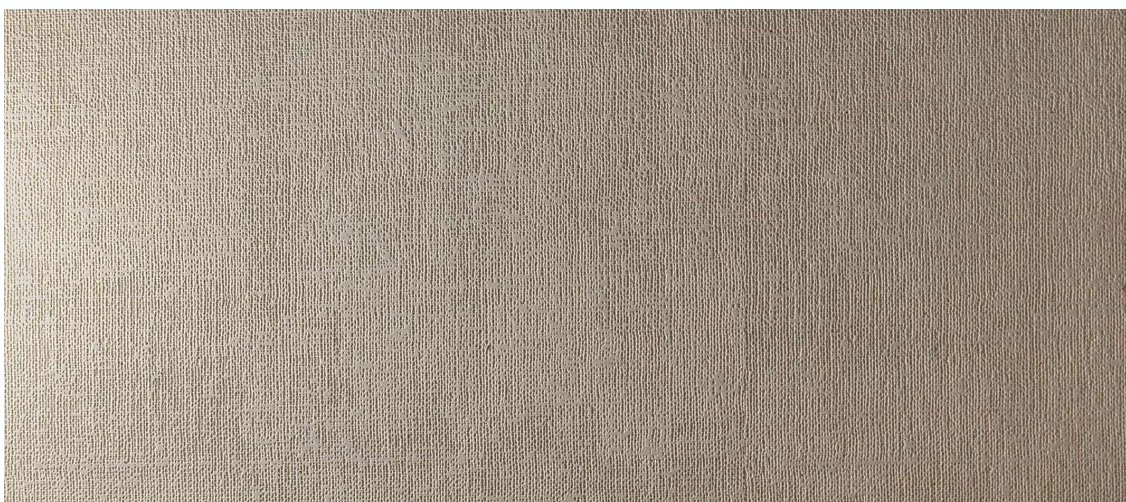
- Low Embodied Carbon
- Breathable & Hygroscopic
- Compostable
- Non-toxic, inert
- Passive regulator of interior humidity
- Repairable
- Fire rating: Euroclass A1



ROYAL NUBUCK Off-white 30252



OSIS Edition 5 veneer

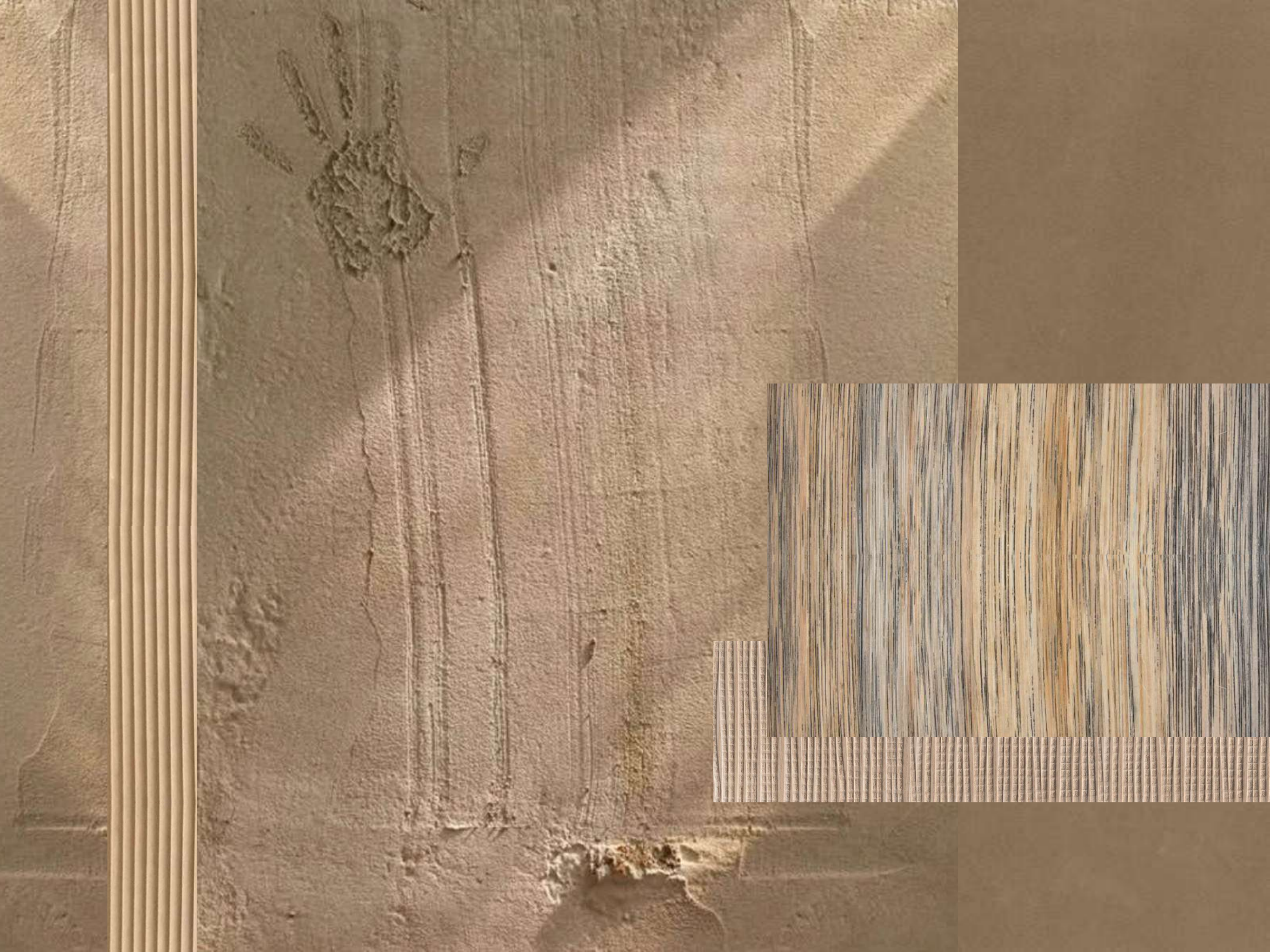


Avorio

Sizes: • 30,5x30,5 • 30,5x61 cm (thk 1cm)



Caleb wood





Matteo brioni clayplaster



Karuun stripes

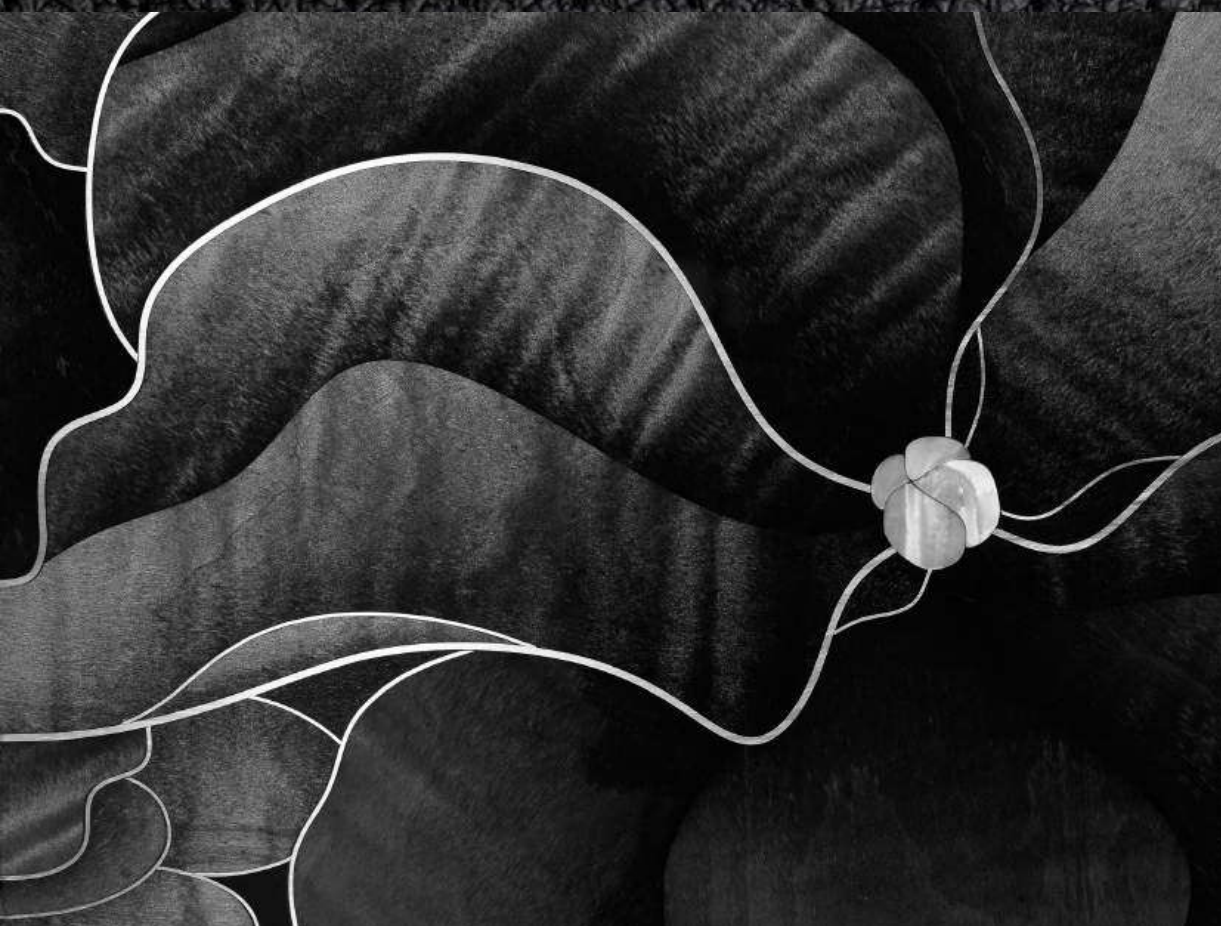


Latho Move B+B

Latho Milled



The colors found us, soft
and bold,
Textures whispered,
stories told.





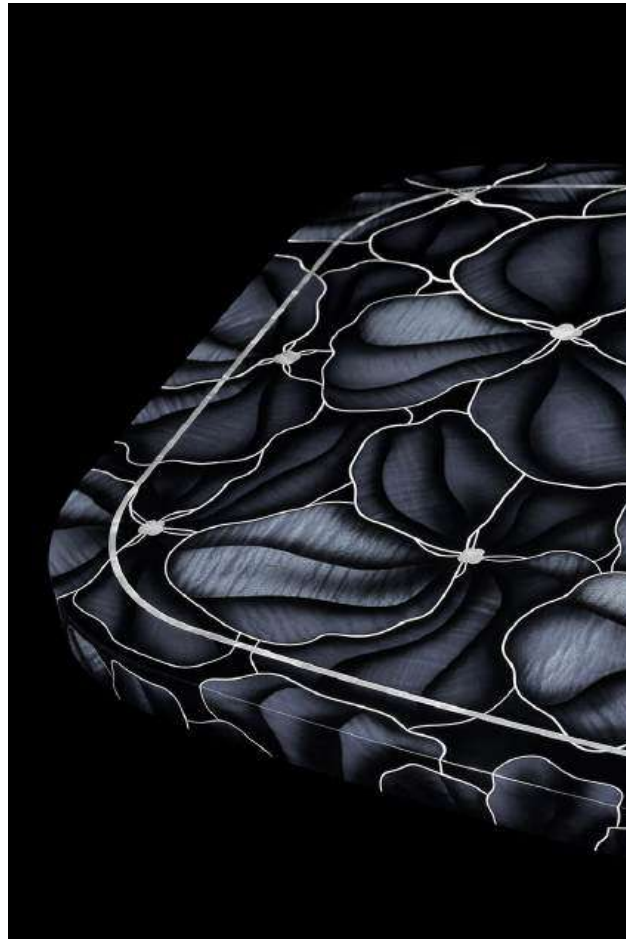
PERFORATED 1A



Hosowari Border



NUANCE Earthy grey 40784



HAWAIIAN HIBISCUS

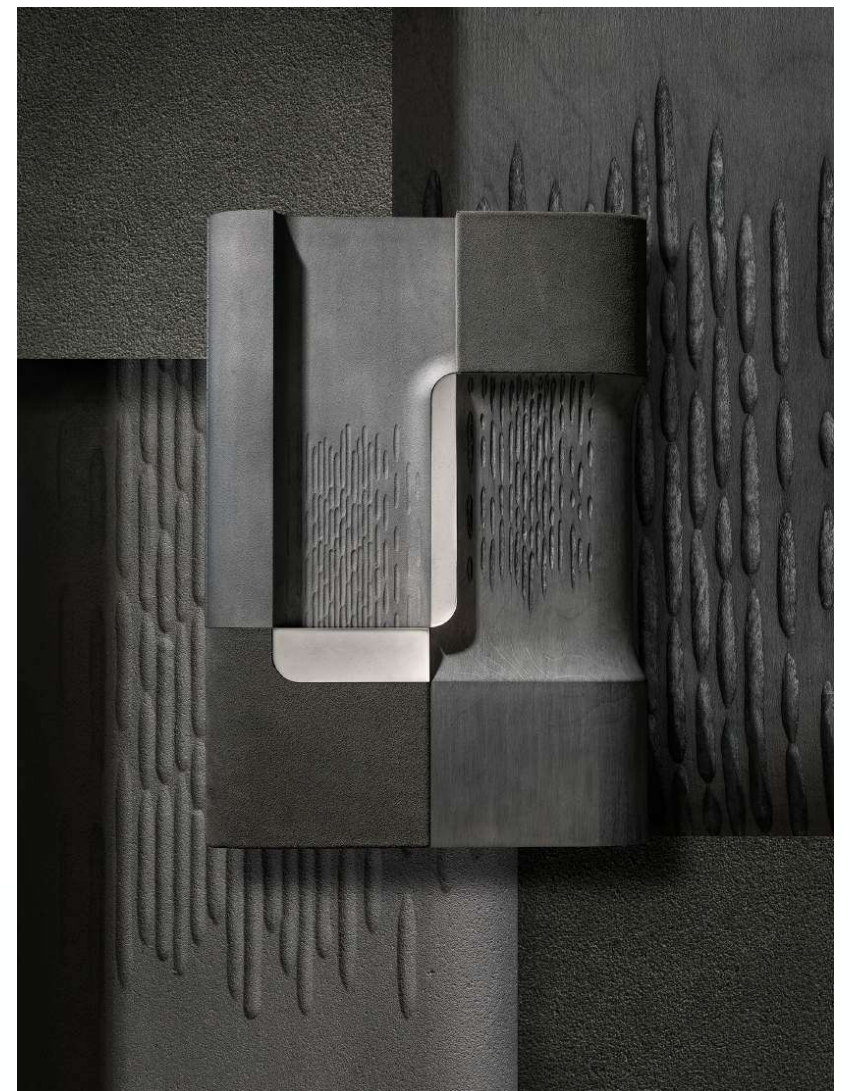
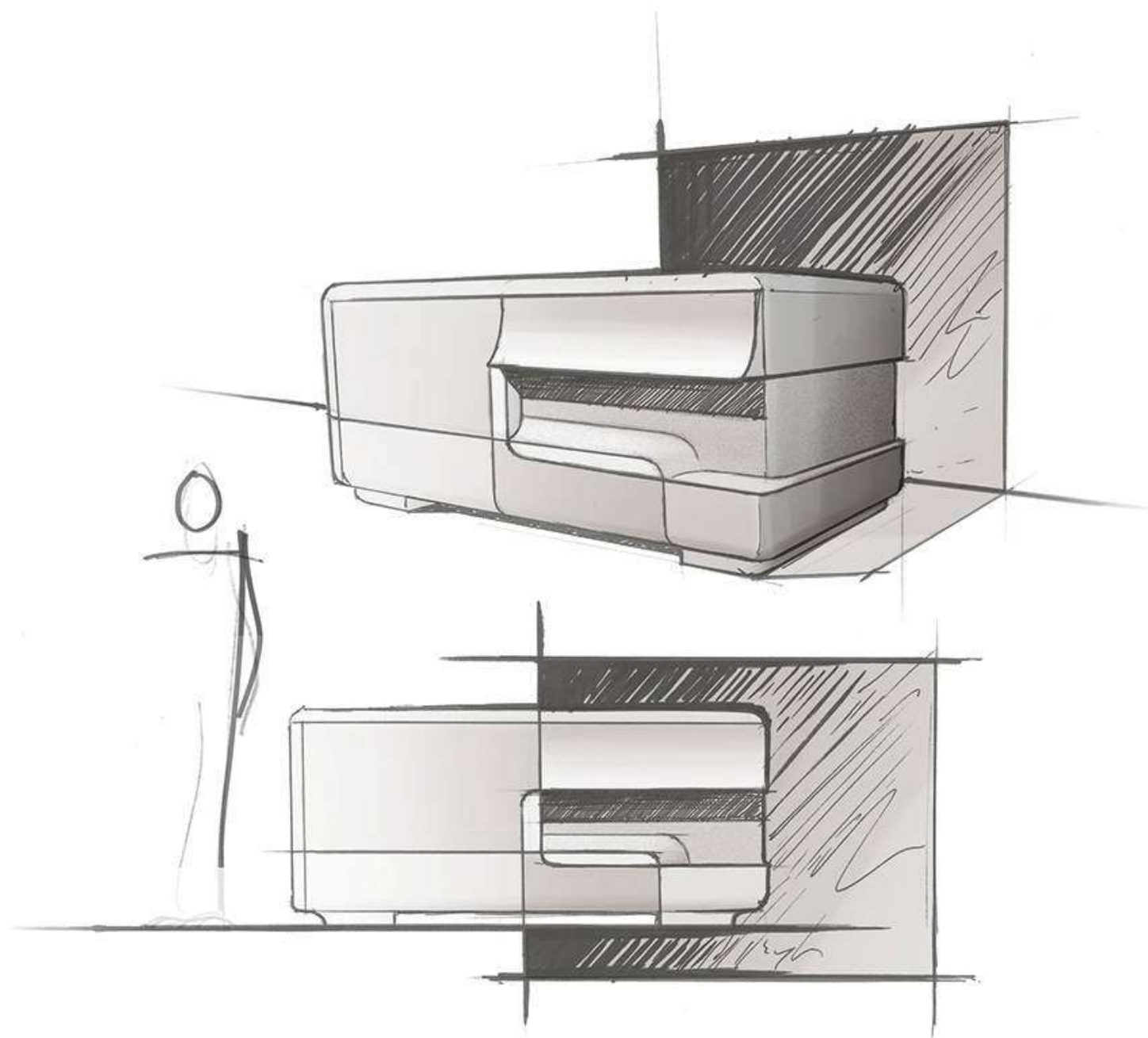
Materials: Figured Anigre, 924 Silver.

Traditional silver smithing techniques are employed to seamlessly combine custom dyed figured anigre and sterling silver to create this pattern inspired by the Hawaiian hibiscus flower. The delicate flower centres, or stigmas, are picked out with white mother of pearl set into ultra fine lines of more sterling silver.





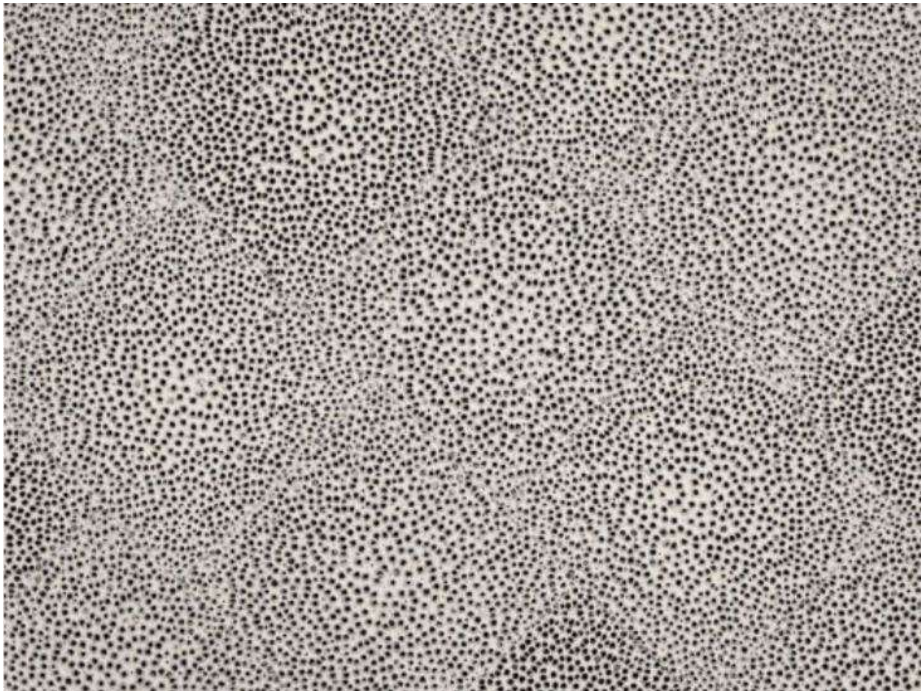
ACHROMATIC FUSION



Materials: Sand Cast
Aluminium, Maple Timber &
Nubuck Leather.



Karuun stripes



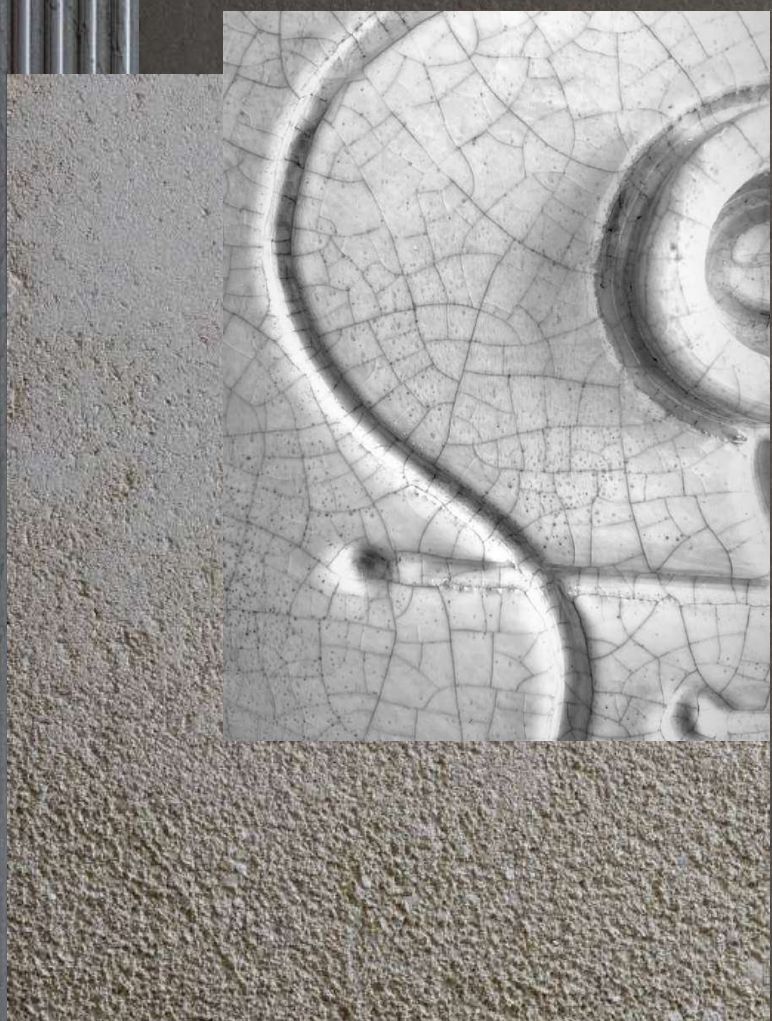
Karuun shine

BLACK PANTHER 04_16

Colour code: 04-16



Textures speak, colors echo, and artistry brings them to life. Each surface tells a story—layered, sculpted, and curated to inspire.



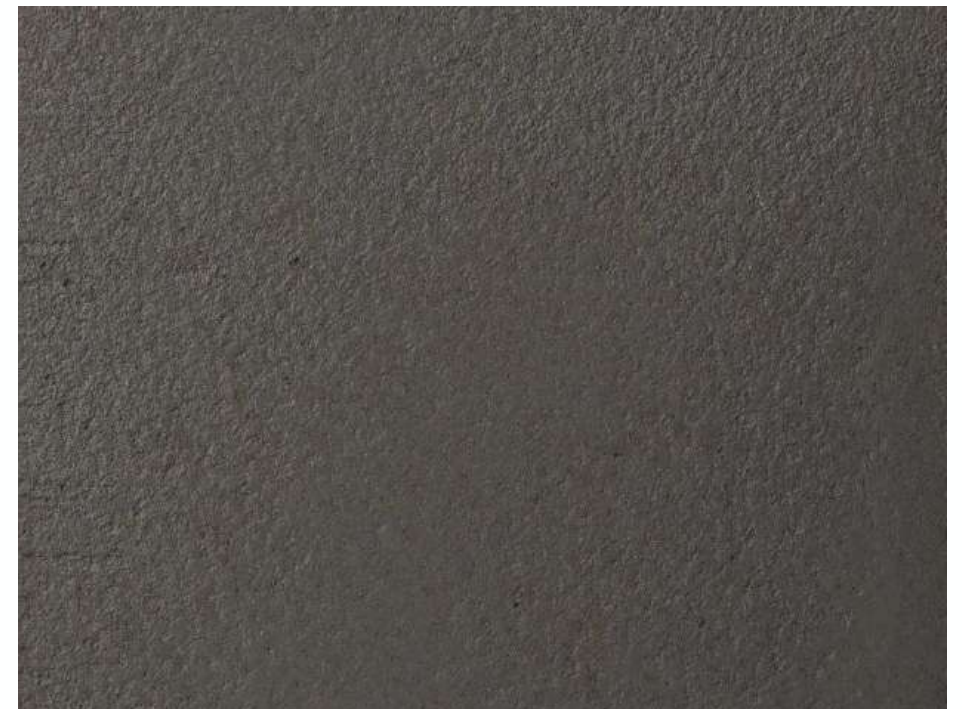


Bardiglio Imperiale

Sizes: • 30,5x61 (thk 1cm)

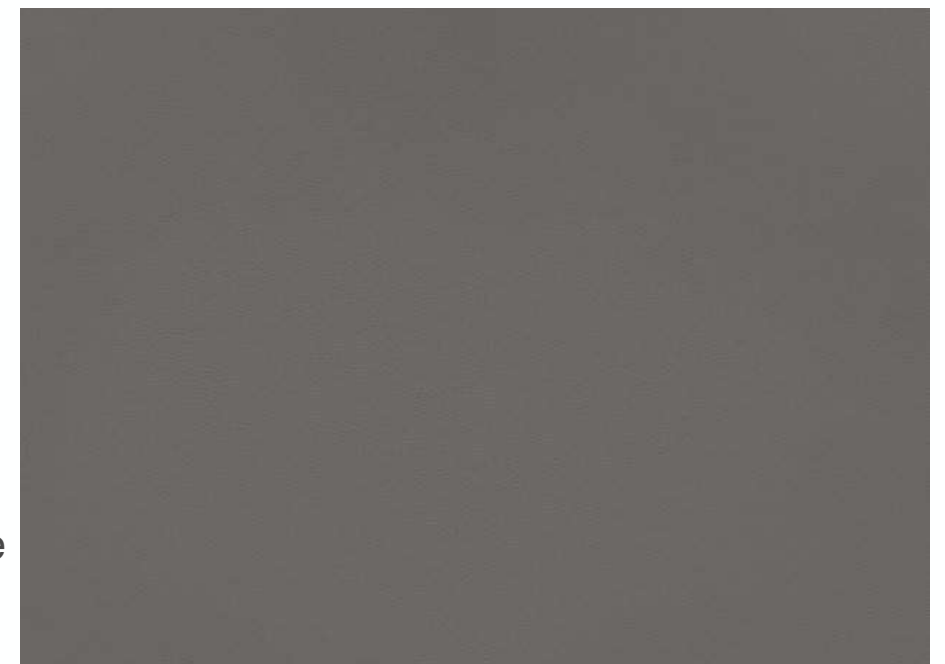
GRY-01

All colours are available across our classic finishes range. Colours may vary across our different finishes.

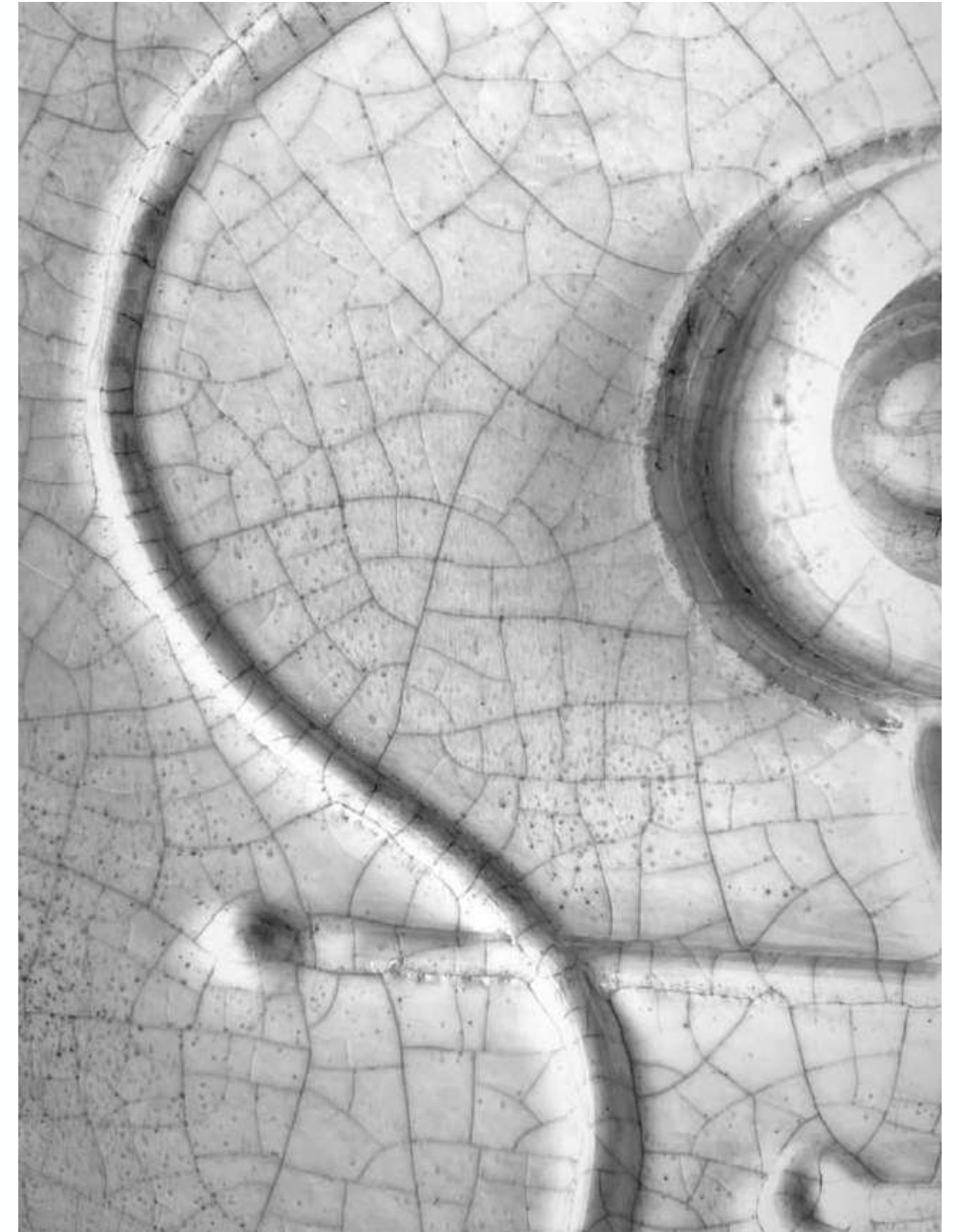


OMBRE TEXTURE

A twist on our Ombre Colour finish, this surface gradually takes the texture of clay plaster from relatively coarse to relatively smooth, or vice versa. Inherently tactile, it can be used to add visual interest, emphasise volume or suggest transitions and zones.



SAVANNE® Grey 30312



Since moving to Los Angeles in 2016, French artist and designer Olivia Cognet has focused on ceramics as the fertile medium through which she expresses her boundless creativity.





MOVE D+D

By using special technologies, surfaces get shaped, obtaining different textures

Panels made to size, laminating textured veneer or melamine, on core support.

Substrates: preferably MDF, but other alternatives are suitable, as chipboard or plywood, on versions standard, waterproof or fire resistant.

Available thickness: from 1,2 mm to 80 mm, and over if required.

Maximum dimension: 2570×1300 mm without support.

Optimal dimensions: 2440×1220 mm with support.



ROYAL NUBUCK Light grey 30250



Combinations

00

Cod. 010500
75x100

01

Cod. 010501
75x100

02

Cod. 010502
75x100

Venato Corchia
levigato

Technical description

ATTIMI

Inlaid wood



Panels 100x75x3 cm thick marble Corchia, worked with CNC machine in 3D, on inclined triangular shaped faces. Inlays for wood, processes with CNC machine. Hand-honing finish. Triangles inlaid in Ziricote, Bois de Rose, Rosewood, Canaletto, Cedar and Frassino, on 3 mm mdf support, balanced with tanganica walnut back. Zero gloss acrylic paint, material effect.

We didn't choose the
colors — we simply
observed, and nature
revealed them.

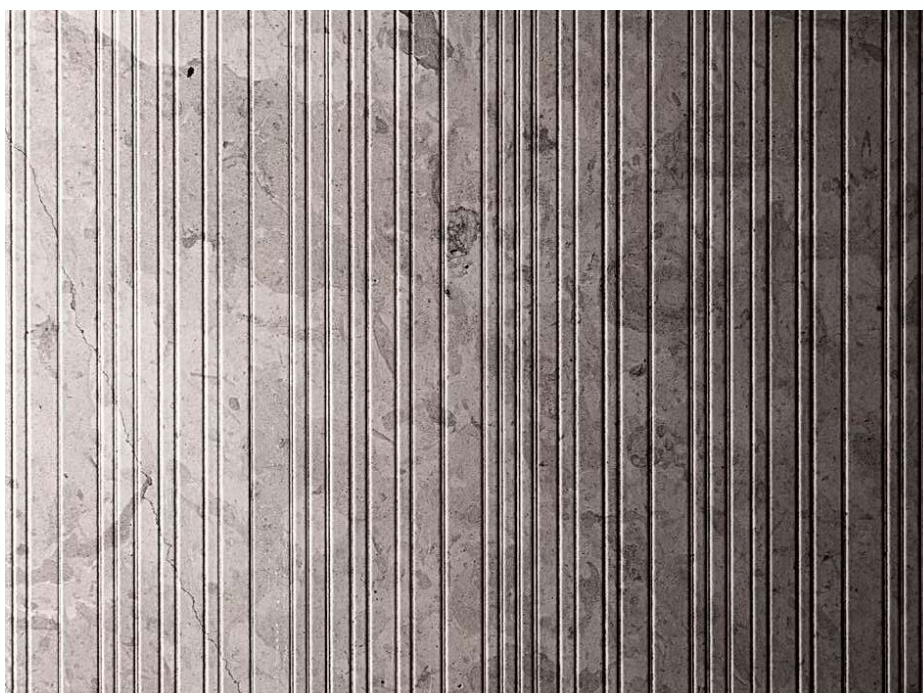




Beige - 23603

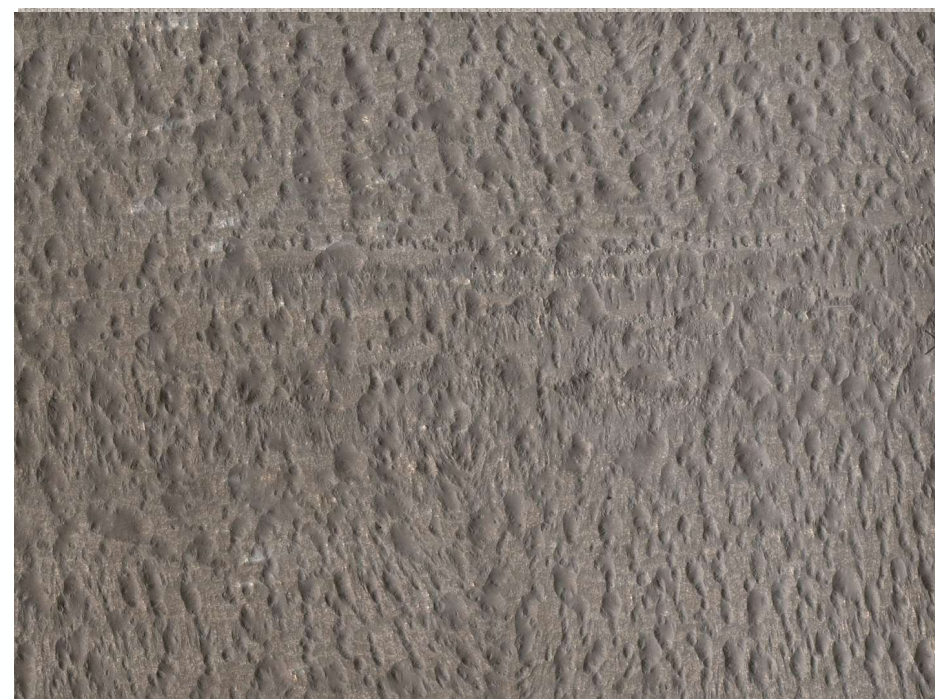


Graphit-Grey-Pluto



Gris Nuage

Sizes: • 30,5x30,5
• 30,5x61 • 61x61
• 61x122 cm (thk 1cm)



Light-Bronze-Neptun



Artistry is a dialogue—
crafted by hands,
shaped by vision, and
felt by those who
experience it.

CUROQ CONNECT ME!

DUBAI INDIA