



CUROR

SATIN COPPER F5

F5

Handcraft finishing created for indoor and outdoor use. Satin copper is obtained manually with Scotch-Brite, than protected with a transparent varnish. Differences compared to the sample provided are not to be considered as a manufacturing defect, but as a feature of the manual processing, that may be susceptible to variances in color and homogeneity. If placed outside, the finishes can experience dissimilar color alteration, which should not be considered faults. For cleaning and maintenance only use a cotton cloth dampened with water or specific neutral products for varnished surfaces. Do not use abrasive cloths, solvents, alcohol or strong detergents. Dry the surface thoroughly in case of standing water. Samples images are an indication only and do not replace the use of real ones, since it is not possible to guarantee a reproduction identical to the original.



BRUSHED COPPER M10

M10

Handcraft finishing created for indoor and outdoor use. Brushed copper is obtained manually with Scotch-Brite, than protected with a transparent varnish. Differences compared to the sample provided are not to be considered as a manufacturing defect, but as a feature of the manual processing, that may be susceptible to variances in color and homogeneity. If placed outside, the finishes can experience dissimilar color alteration, which should not be considered faults. For cleaning and maintenance only use a cotton cloth dampened with water or specific neutral products for varnished surfaces. Do not use abrasive cloths, solvents, alcohol or strong detergents. Dry the surface thoroughly in case of standing water. Samples images are an indication only and do not replace the use of real ones, since it is not possible to guarantee a reproduction identical to the original.



BRUSHED NATURAL COPPER M10N M10N

Handcraft finishing created for indoor use. Brushed copper is obtained manually with Scotch-Brite. Natural copper, without protective surface treatments, preserves its intrinsic antibacterial properties intact. The material is alive and changes over time, acquiring shades of different oxidations. The original state can be restored through gentle manual brushing and cleaning with dampened microfiber cloth. Differences compared to the sample provided are not to be considered as a manufacturing defect, but as a feature of the manual processing, that may be susceptible to variances in color and homogeneity. If placed outside, the finishes can experience dissimilar color alteration, which should not be considered faults.



DELABRÉ COPPER G5 G5

Handcraft finishing created for indoor and outdoor use. Copper undergoes manual oxidation treatment to obtain particular chromatic cloud effects. Subsequently it is lacquered with a protective transparent varnish. Differences compared to the sample provided are not to be considered as a manufacturing defect, but as a feature of the manual processing, that may be susceptible to variances in color and homogeneity. If placed outside, the finishing can experience dissimilar color alteration, which should not be considered faults. For cleaning and maintenance only use a cotton cloth dampened with water or specific neutral products for varnished surfaces.



DEMAREA COPPER M5
M5

Handcrafted finishing designed by Zanellato/Bortotto, developed and handcrafted for indoor and outdoor use. Overlapping manual oxidations applied on brass create watercolor stratified effects that remind us of the waves that string on the shore. Subsequently it is lacquered with a protective, transparent varnish. Differences compared to the sample provided are not to be considered as a manufacturing defect, but as a feature of the manual processing, that may be susceptible to variances in color and homogeneity. If placed outside, the finishes can experience dissimilar color alteration, which should not be considered faults.



ORBITALE DELABRÉ COPPER G4 G4

Handcraft finishing created for indoor and outdoor use. It consists in several phases: copper oxidation, manual brushing to get the "scratched" effect and application of a protective, transparent varnish. Differences compared to the sample provided are not to be considered as a manufacturing defect, but as a feature of the manual processing, that may be susceptible to variances in color and homogeneity. If placed outside, the finishing can experience dissimilar color alteration, which should not be considered faults. For cleaning and maintenance only use a cotton cloth dampened with water or specific neutral products for varnished surfaces.



STRIPED DELABRÉ COPPER G6 G6

Handcraft finishing created for indoor and outdoor use. It consists in several manual phases: copper oxidation, several passages with Scotch-Brite to get the "striped" effect and the application of a protective, transparent varnish. Differences compared to the sample provided are not to be considered as a manufacturing defect, but as a feature of the manual processing, that may be susceptible to variances in color and homogeneity. If placed outside, the finishing can experience dissimilar color alteration, which should not be considered faults.



DEOPALE COPPER M2

M2

Handcraft finishing created for indoor and outdoor use. The oxidation of copper giving its particular chromatic effects, such as the light games of the fire opal, characterized by a red background with reflections that can be particularly vivid and bright, changing in iridescent tones from red to orange. Subsequently it is lacquered with a protective, transparent varnish. Differences compared to the sample provided are not to be considered as a manufacturing defect, but as a feature of the manual processing, that may be susceptible to variances in color and homogeneity. If placed outside, the finishes can experience dissimilar color alteration, which should not be considered faults. For cleaning and maintenance only use a cotton cloth dampened with water or specific neutral products for varnished surfaces.



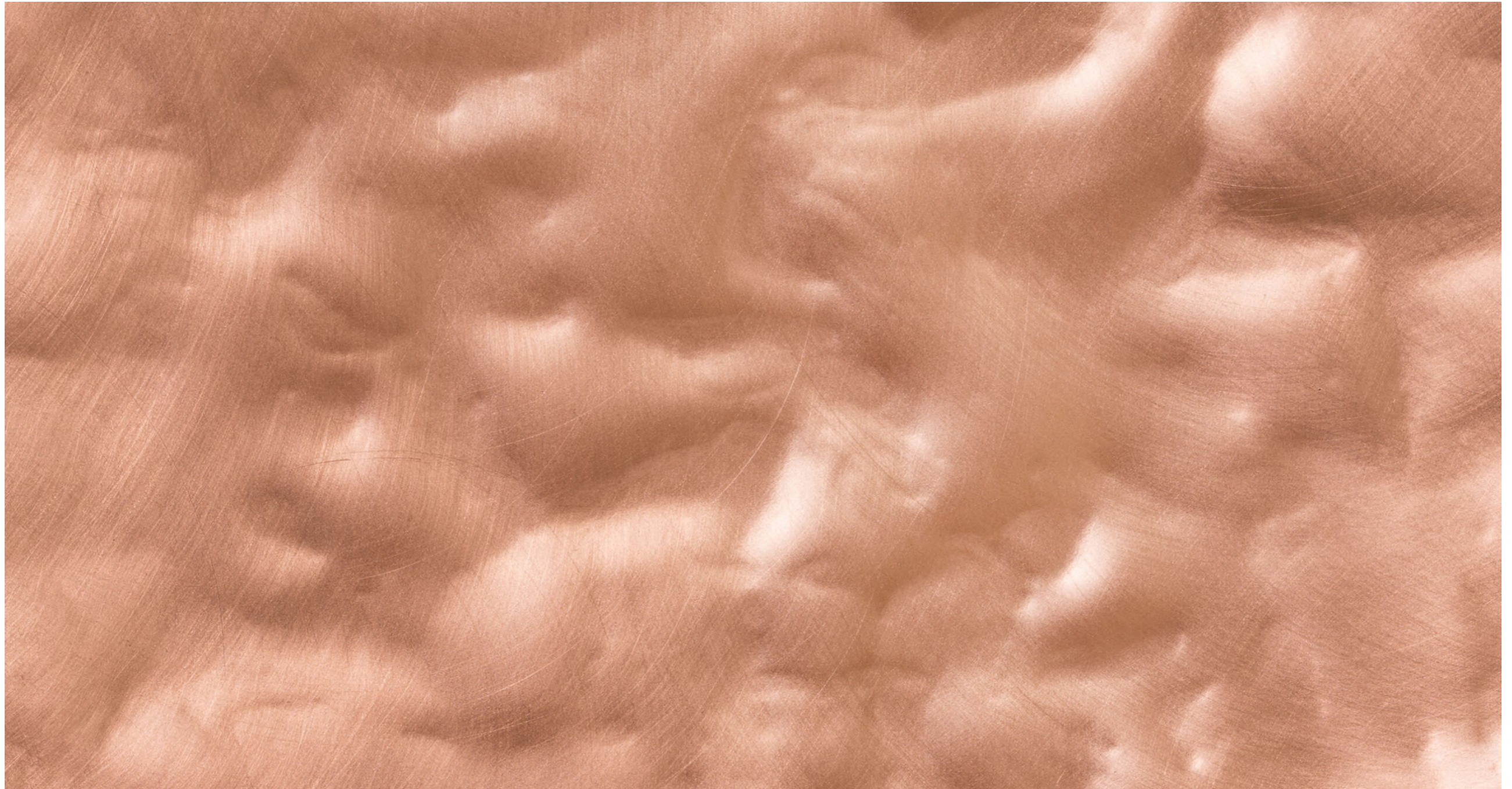
DESATÈN COPPER M17
M17

Handcraft finishing created for indoor use only. Copper is handmade hammered, subsequently it is polished and lacquered with a semi glossy, protective, transparent varnish. Differences compared to the sample provided are not to be considered as a manufacturing defect, but as a feature of the manual processing, that may be susceptible to variances in color and homogeneity. Samples images are an indication only and do not replace the use of real ones, since it is not possible to guarantee a reproduction identical to the original



BRUSHED HAMMERED COPPER G10 G10

Handcraft finishing created for indoor use only. Copper is handmade hammered, subsequently it is brushed and lacquered with a glossy, protective, transparent varnish. Differences compared to the sample provided are not to be considered as a manufacturing defect, but as a feature of the manual processing, that may be susceptible to variances in colour and homogeneity. For cleaning and maintenance only use a cotton cloth dampened with water or specific neutral products for varnished surfaces. Do not use abrasive cloths, solvents, alcohol or strong detergents. Dry the surface thoroughly in case of standing water.



POLISHED COPPER E14
E14

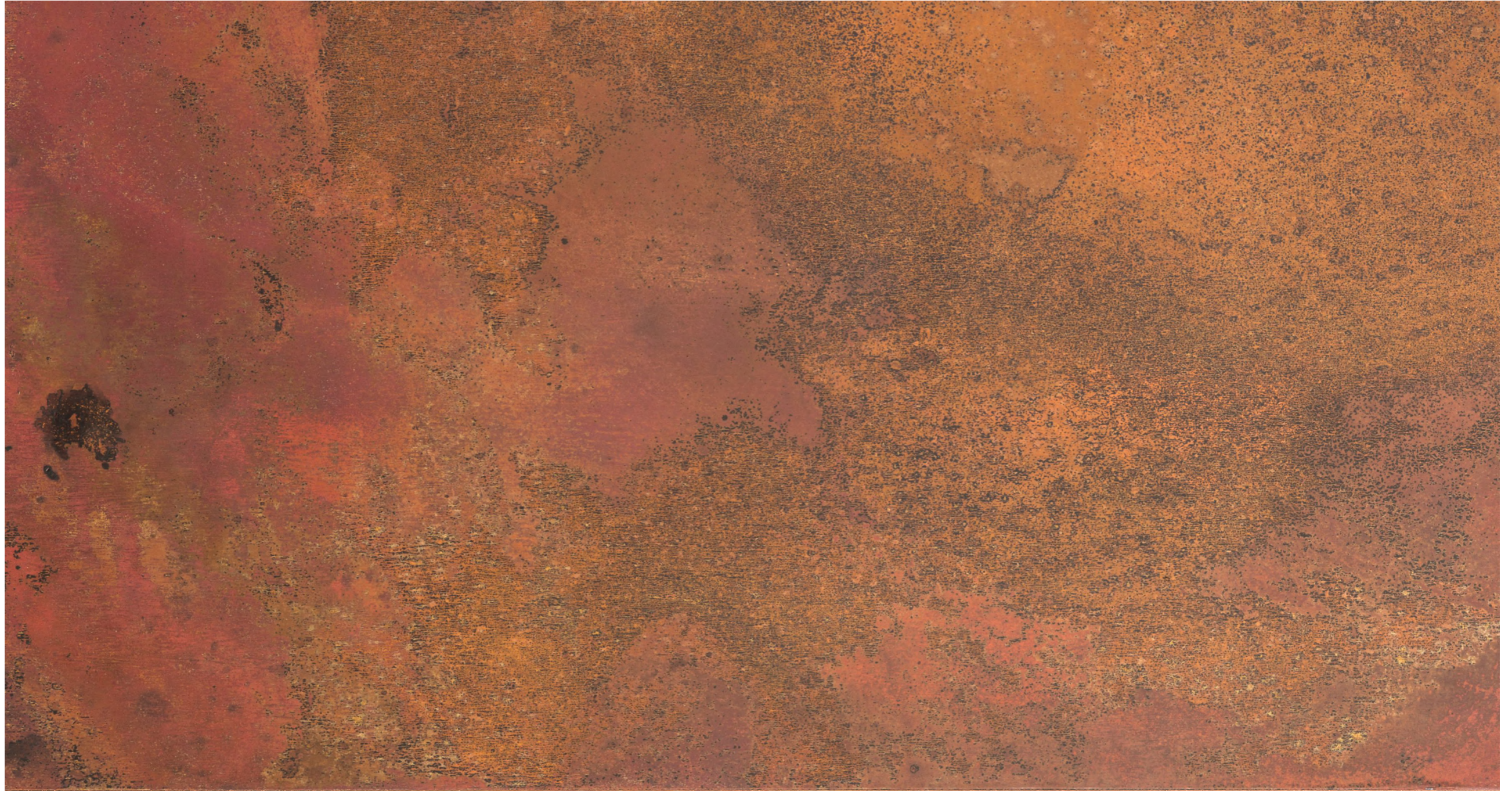
Polished coppers with protective, transparent varnish for indoor use. For cleaning and maintenance only use a cotton cloth dampened with water or specific neutral products for varnished surfaces. Do not use abrasive cloths, solvents, alcohol or strong detergents. Dry the surface thoroughly in case of standing water. Samples images are an indication only and do not replace the use of real ones, since it is not possible to guarantee a reproduction identical to the original.



MOTTLED COPPER F6

F6

Relying on a secular experience in working copper and has developed a particular copper manufacturing obtained through handmade fire-oxidation, giving to the objects a unique shade and look, subsequently it is lacquered with a protective transparent varnish. For indoor use only, the mottled copper is a malleable material, suitable as a wood covering. Differences compared to the sample provided are not to be considered as a manufacturing defect, but as a feature of the manual processing, that may be susceptible to variances in colour and homogeneity. For cleaning and maintenance only use a cotton cloth dampened with water or specific neutral products for varnished surfaces. Do not use abrasive cloths, solvents, alcohol or strong detergents. Dry the surface thoroughly in case of standing water. Samples images are an indication only and do not replace the use of real ones, since it is not possible to guarantee a reproduction identical to the original.



RUBY COPPER G11

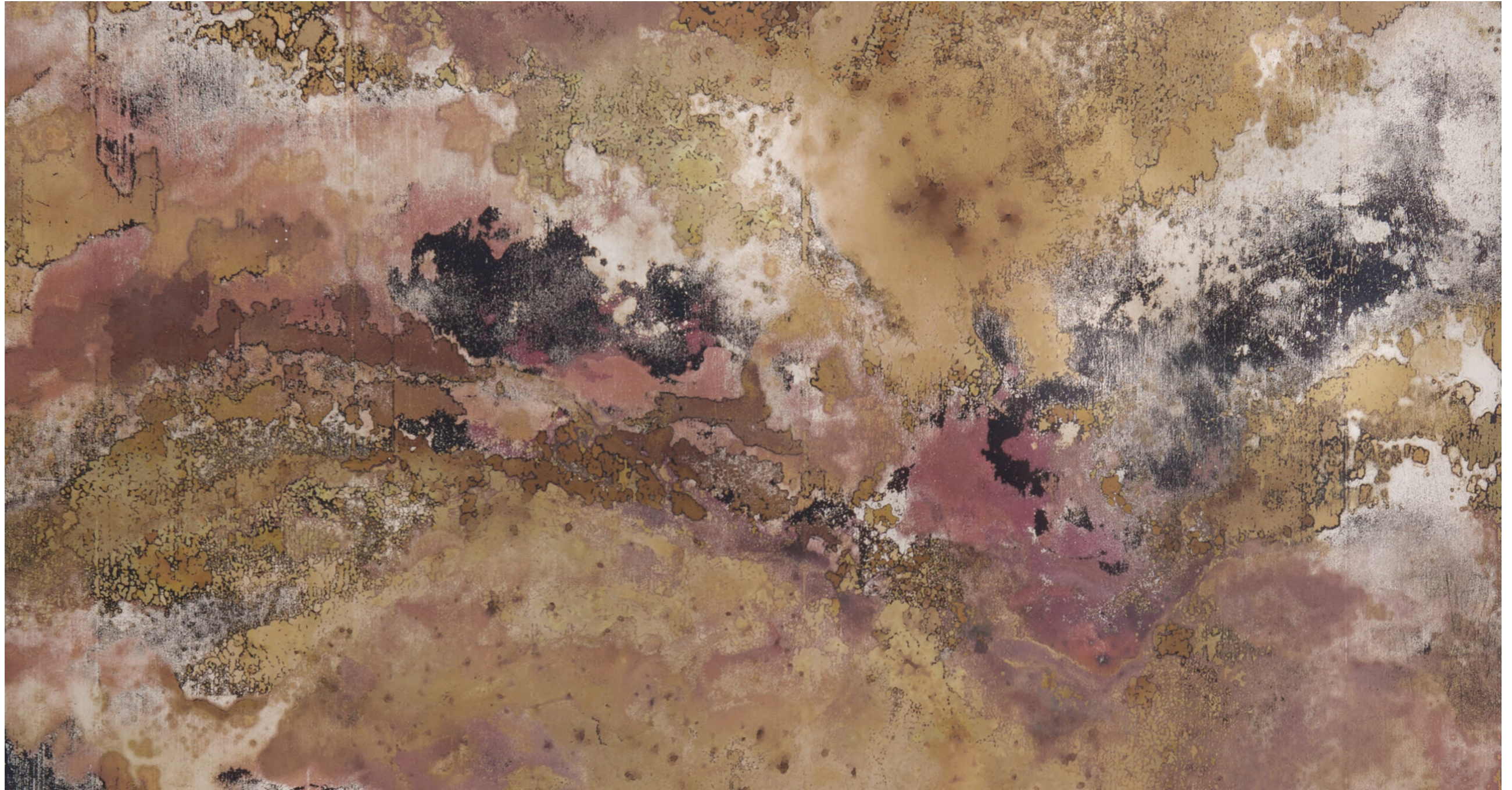
G11

Handcraft finishing created for indoor and outdoor use. Satin copper undergoes manual oxidation treatment to obtain particular chromatic effects similar to ruby color. Subsequently it is lacquered with a protective transparent varnish. Differences compared to the sample provided are not to be considered as a manufacturing defect, but as a feature of the manual processing, that may be susceptible to variances in color and homogeneity. If placed outside, the finishing can experience dissimilar color alteration, which should not be considered faults. For cleaning and maintenance only use a cotton cloth dampened with water or specific neutral products for varnished surfaces. Do not use abrasive cloths, solvents, alcohol or strong detergents. Dry the surface thoroughly in case of standing water. Samples images are an indication only and do not replace the use of real ones, since it is not possible to guarantee a reproduction identical to the original.



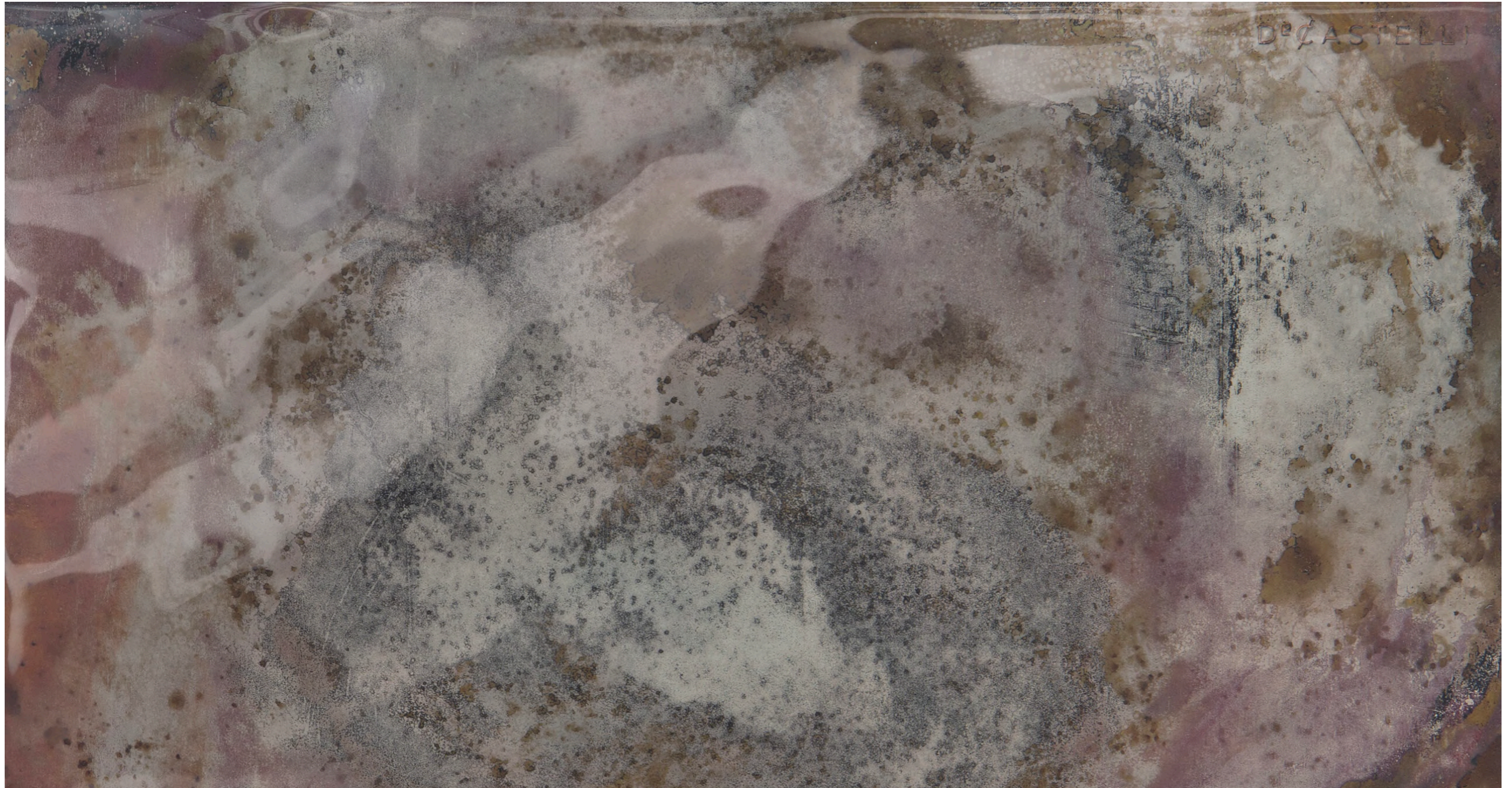
MATT FOREST DENUANCE COPPER N10 N10

Handcraft finishing created for indoor use obtained through the combination of fire, oxidation and pigments, than protected with a matt transparent varnish. Differences compared to the sample provided are not to be considered as a manufacturing defect, but as a feature of the manual processing, that may be susceptible to variances in color and homogeneity. For cleaning and maintenance only use a cotton cloth dampened with water or specific neutral products for varnished surfaces. Do not use abrasive cloths, solvents, alcohol or strong detergents. Dry the surface thoroughly in case of standing water.



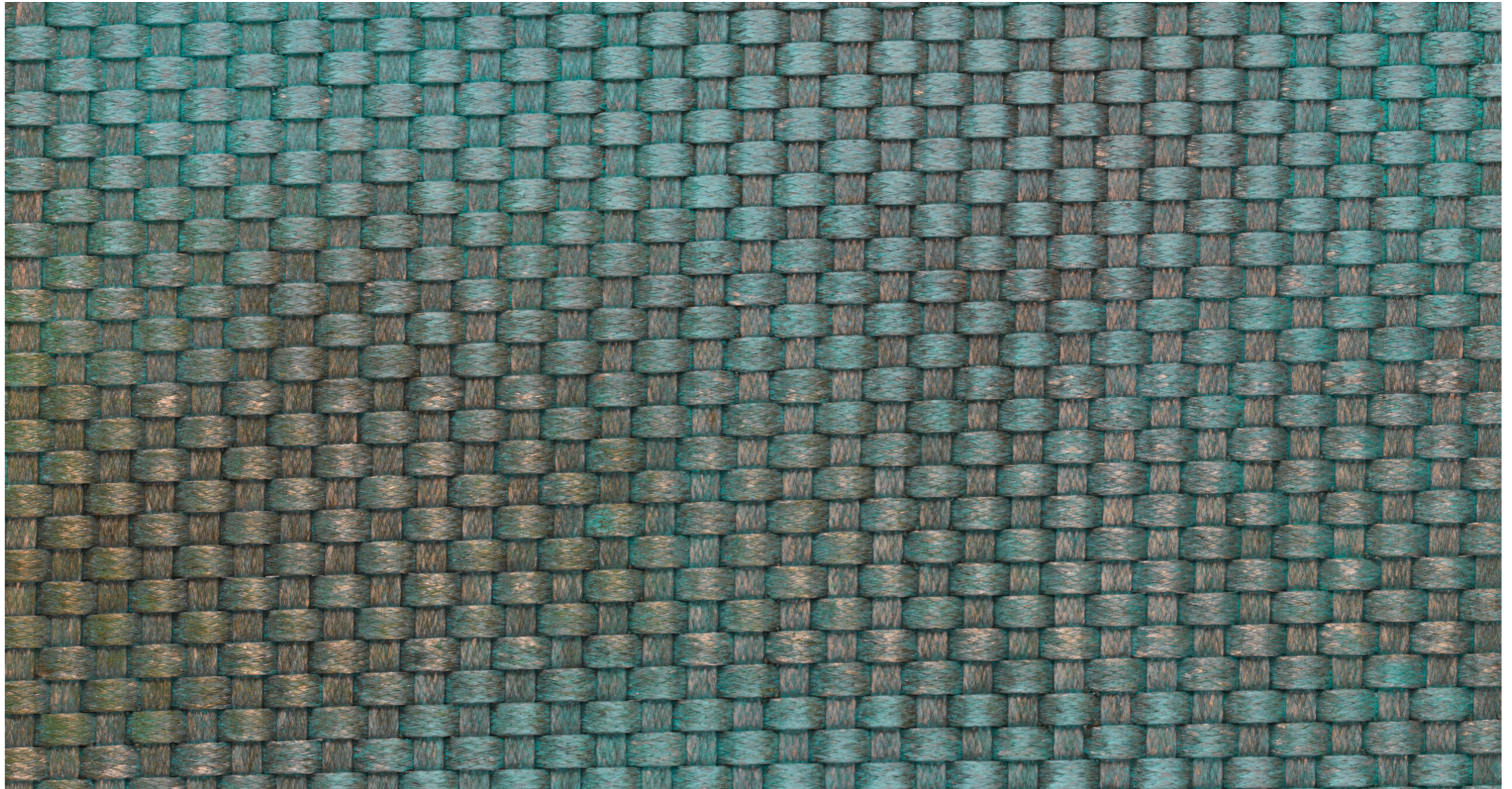
POLISHED FOREST DENUANCE COPPER N1
N1

Handcraft finishing created for indoor use obtained through the combination of fire, oxidation and pigments, than protected with a polished transparent varnish. Differences compared to the sample provided are not to be considered as a manufacturing defect, but as a feature of the manual processing, that may be susceptible to variances in color and homogeneity. For cleaning and maintenance only use a cotton cloth dampened with water or specific neutral products for varnished surfaces. Do not use abrasive cloths, solvents, alcohol or strong detergents. Dry the surface thoroughly in case of standing water



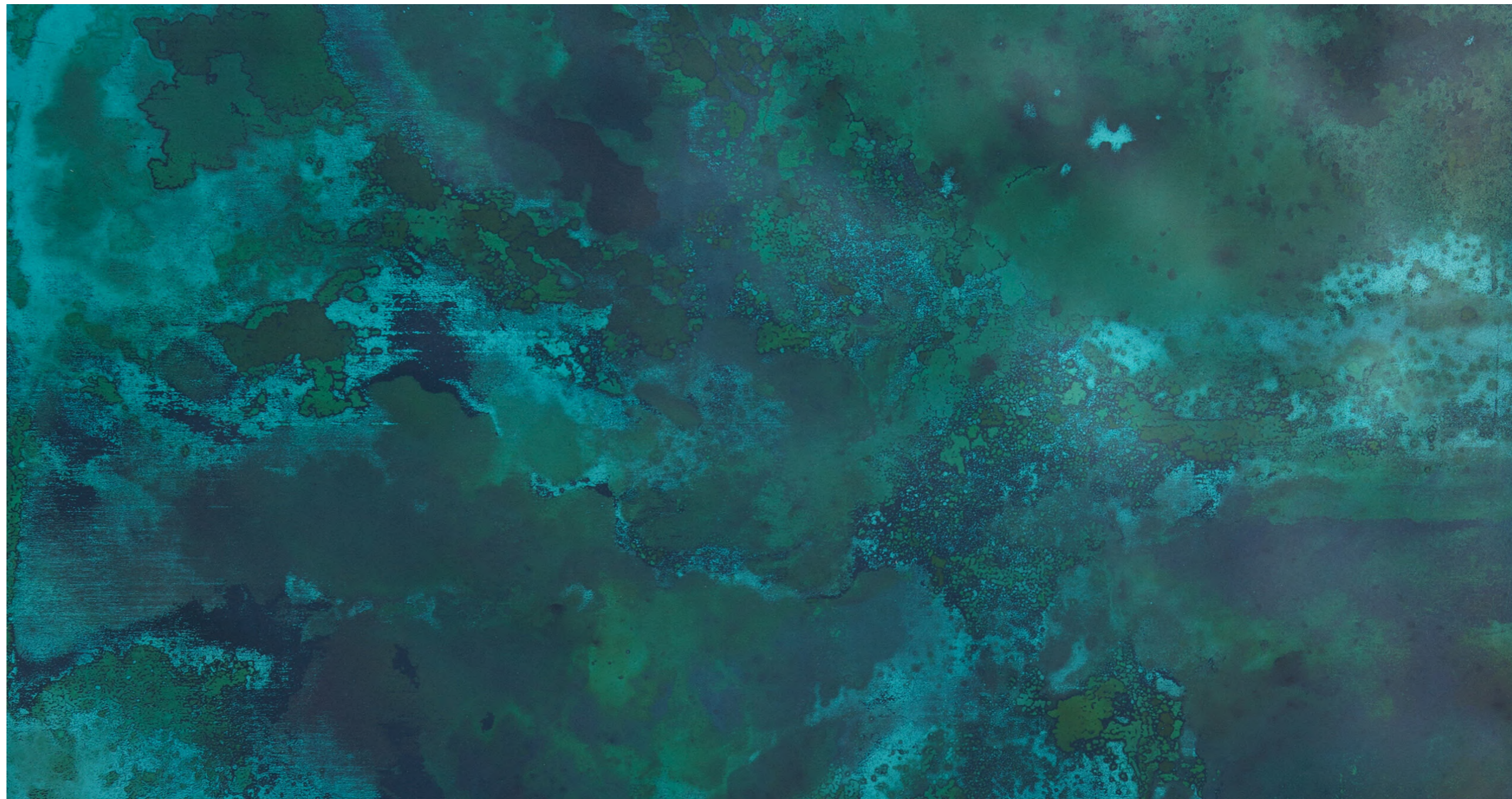
TELA BOSCO THICK WEAVING P2

Tela is a metallic fabric made of copper.. Types of manufacturing, weaving and following copper handmade oxidation with fire create peculiar iridescent shades. A chromatic scale that goes from blue to red and gold. Suitable for indoor use only, Tela can be used as boiserie, a precious covering for the most varied interpretations. Differences compared to the sample provided are not to be considered as a manufacturing defect, but as a feature of the manual processing, that may be susceptible to variances in colour and homogeneity. For cleaning we suggest to proceed with a simple pouncing on the surface without using any detergent or water.



RAME DENUANCE OCEANO OPACO N20 N20

Handcraft finishing created for indoor use obtained through the combination of fire, oxidation and pigments, than protected with a matt transparent varnish. Differences compared to the sample provided are not to be considered as a manufacturing defect, but as a feature of the manual processing, that may be susceptible to variances in color and homogeneity. For cleaning and maintenance only use a cotton cloth dampened with water or specific neutral products for varnished surfaces. Do not use abrasive cloths, solvents, alcohol or strong detergents. Dry the surface thoroughly in case of standing water. Samples images are an indication only and do not replace the use of real ones, since it is not possible to guarantee a reproduction identical to the original.



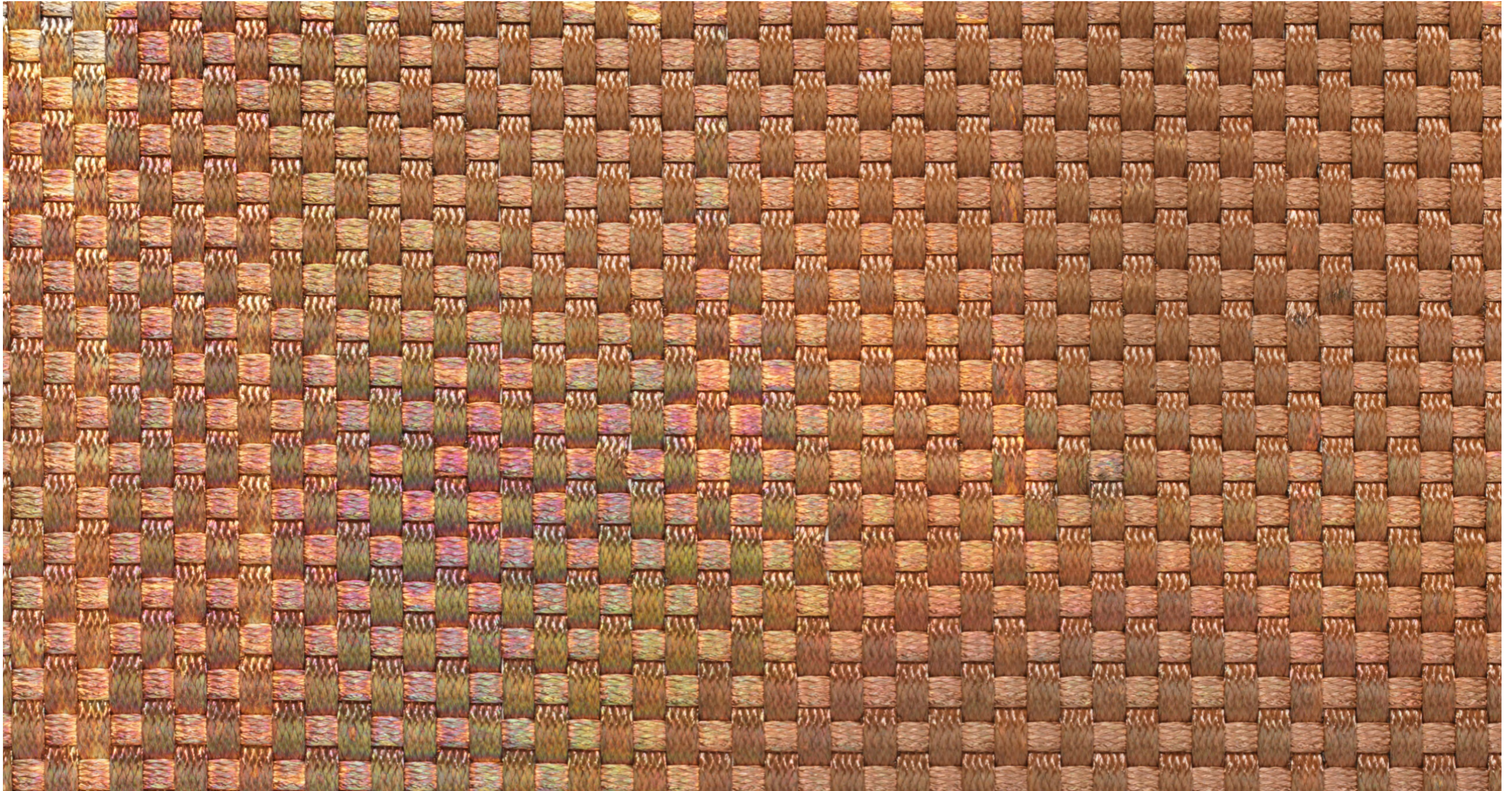
TELA AURORA THICK WEAVING P4 P4

Tela is a metallic fabric made of copper. Types of manufacturing, weaving and following copper handmade oxidation with fire create peculiar iridescent shades. A chromatic scale that goes from blue to red and gold. Suitable for indoor use only, Tela can be used as boiserie, a precious covering for the most varied interpretations. Differences compared to the sample provided are not to be considered as a manufacturing defect, but as a feature of the manual processing, that may be susceptible to variances in colour and homogeneity.



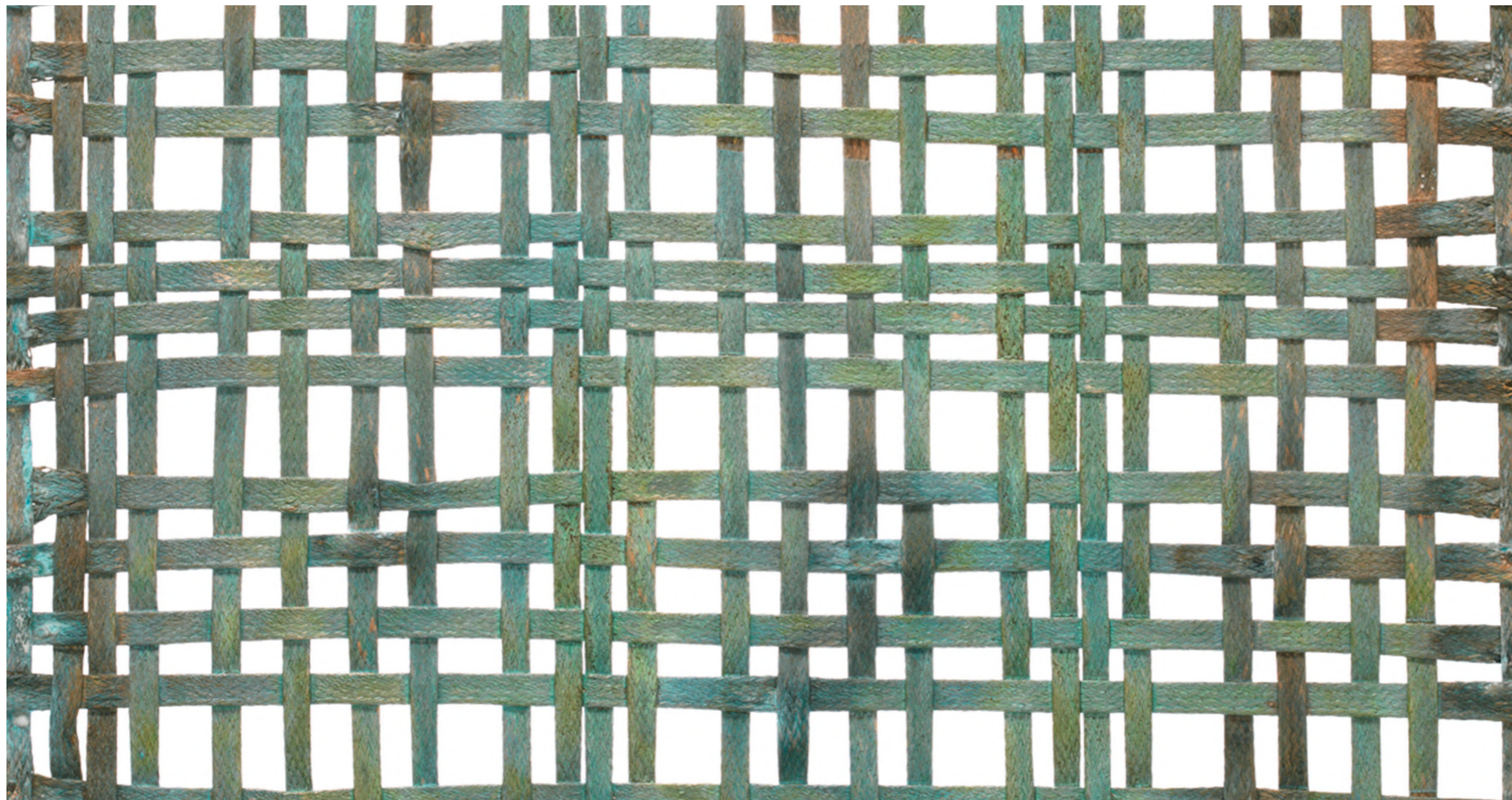
TELA TUNDRA THICK WEAVING P6 P6

Tela is a metallic fabric made of copper. Types of manufacturing, weaving and following copper handmade oxidation with fire create peculiar iridescent shades. A chromatic scale that goes from blue to red and gold. Suitable for indoor use only, Tela can be used as boiserie, a precious covering for the most varied interpretations. Differences compared to the sample provided are not to be considered as a manufacturing defect, but as a feature of the manual processing, that may be susceptible to variances in colour and homogeneity.



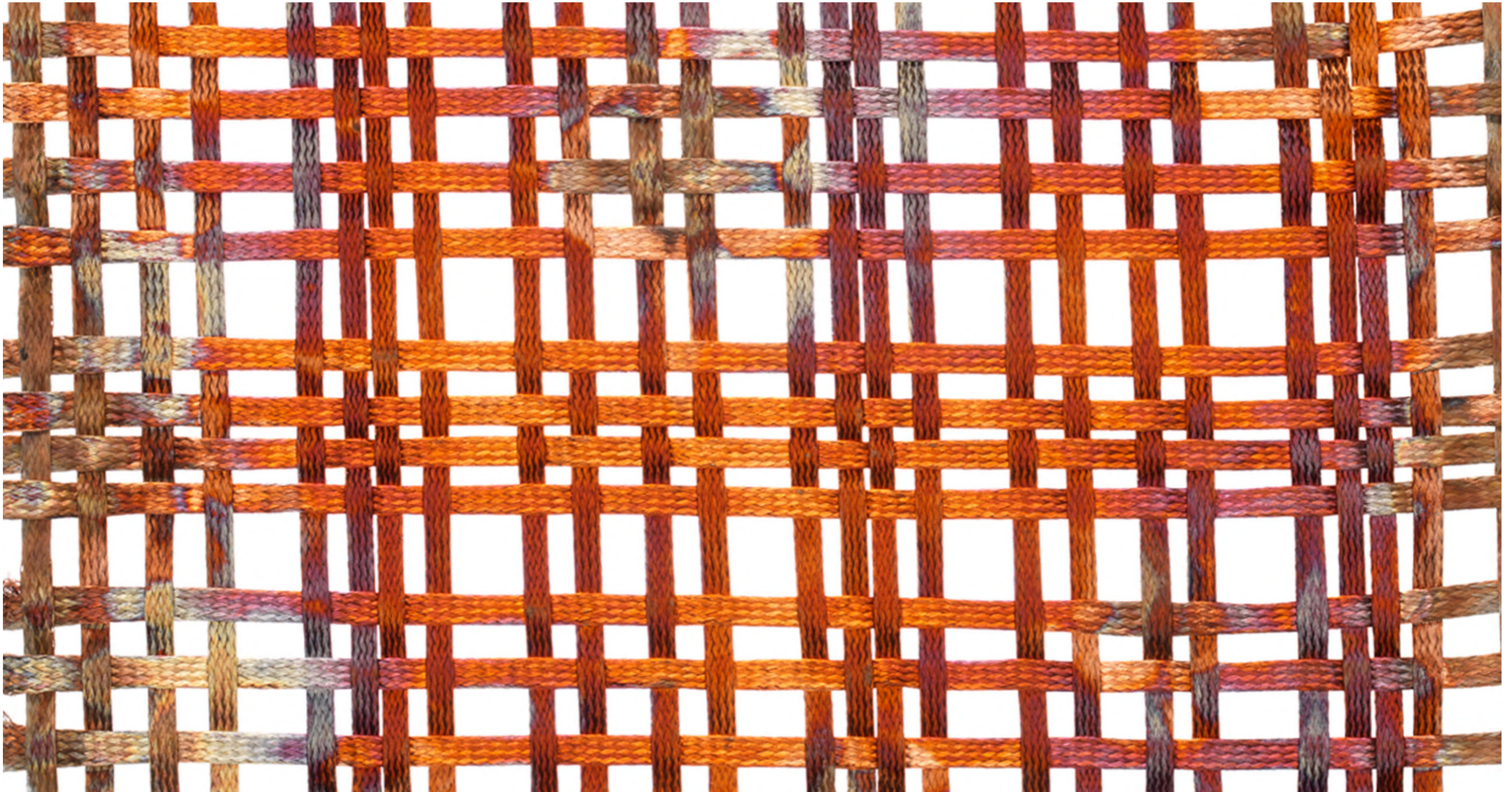
TELA BOSCO OPEN WEAVING P1

Tela is a metallic fabric made of copper. Types of manufacturing, weaving and following copper handmade oxidation with fire create peculiar iridescent shades. A chromatic scale that goes from blue to red and gold. Suitable for indoor use only, Tela can be used as boiserie, a precious covering for the most varied interpretations. Differences compared to the sample provided are not to be considered as a manufacturing defect, but as a feature of the manual processing, that may be susceptible to variances in colour and homogeneity. For cleaning we suggest to proceed with a simple pouncing on the surface without using any detergent or water.



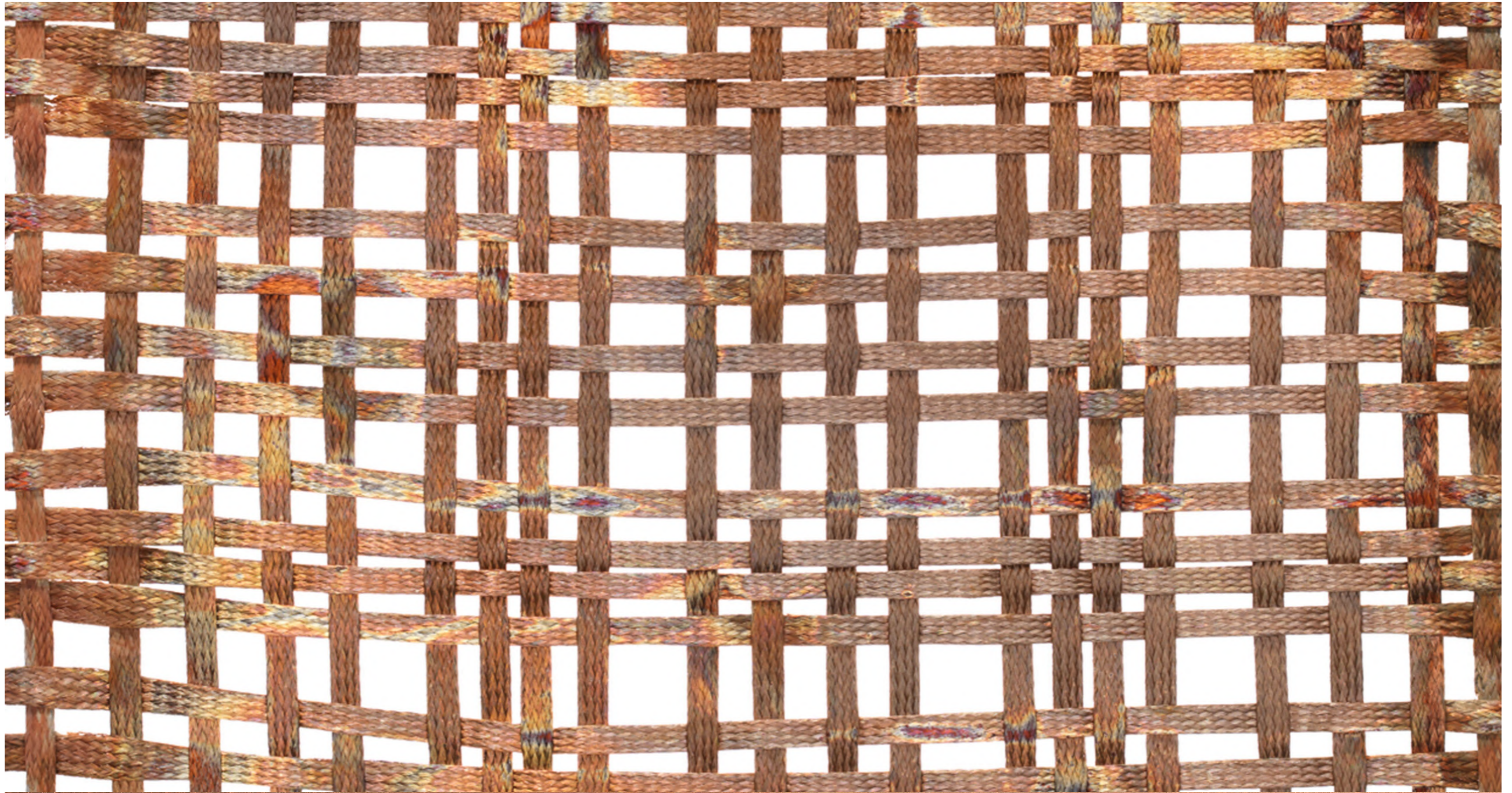
TELA AURORA OPEN WEAVING P3

Tela is a metallic fabric made of copper. Types of manufacturing, weaving and following copper handmade oxidation with fire create peculiar iridescent shades. A chromatic scale that goes from blue to red and gold. Suitable for indoor use only, Tela can be used as boiserie, a precious covering for the most varied interpretations. Differences compared to the sample provided are not to be considered as a manufacturing defect, but as a feature of the manual processing, that may be susceptible to variances in colour and homogeneity. For cleaning we suggest to proceed with a simple pouncing on the surface without using any detergent or water.



TELA TUNDRA OPEN WEAVING P5 P5

Tela is a metallic fabric made of copper. Types of manufacturing, weaving and following copper handmade oxidation with fire create peculiar iridescent shades. A chromatic scale that goes from blue to red and gold. Suitable for indoor use only, Tela can be used as boiserie, a precious covering for the most varied interpretations. Differences compared to the sample provided are not to be considered as a manufacturing defect, but as a feature of the manual processing, that may be susceptible to variances in colour and homogeneity. For cleaning we suggest to proceed with a simple pouncing on the surface without using any detergent or water.



SATIN BRASS F1 F1

Handcraft finishing created for indoor and outdoor use. Satin brass is obtained manually with Scotch-Brite, than protected with a transparent varnish. Differences compared to the sample provided are not to be considered as a manufacturing defect, but as a feature of the manual processing, that may be susceptible to variances in color and homogeneity. If placed outside, the finishes can experience dissimilar color alteration, which should not be considered faults. For cleaning and maintenance only use a cotton cloth dampened with water or specific neutral products for varnished surfaces. Do not use abrasive cloths, solvents, alcohol or strong detergents. Dry the surface thoroughly in case of standing water.



POLISHED BRASS E13
E13

Polished brass with protective, transparent varnish for indoor use. For cleaning and maintenance only use a cotton cloth dampened with water or specific neutral products for varnished surfaces. Do not use abrasive cloths, solvents, alcohol or strong detergents. Dry the surface thoroughly in case of standing water. Samples images are an indication only and do not replace the use of real ones, since it is not possible to guarantee a reproduction identical to the original.



DELABRÉ BRASS F2 F2

Handcraft finishing created for indoor and outdoor use. Brass undergoes manual oxidation treatment to obtain particular chromatic cloud effects. Subsequently it is lacquered with a protective, transparent varnish. Differences compared to the sample provided are not to be considered as a manufacturing defect, but as a feature of the manual processing, that may be susceptible to variances in color and homogeneity. If placed outside, the finishes can experience dissimilar color alteration, which should not be considered faults. For cleaning and maintenance only use a cotton cloth dampened with water or specific neutral products for varnished surfaces. Do not use abrasive cloths, solvents, alcohol or strong detergents



BRUSHED BRASS M9

M9

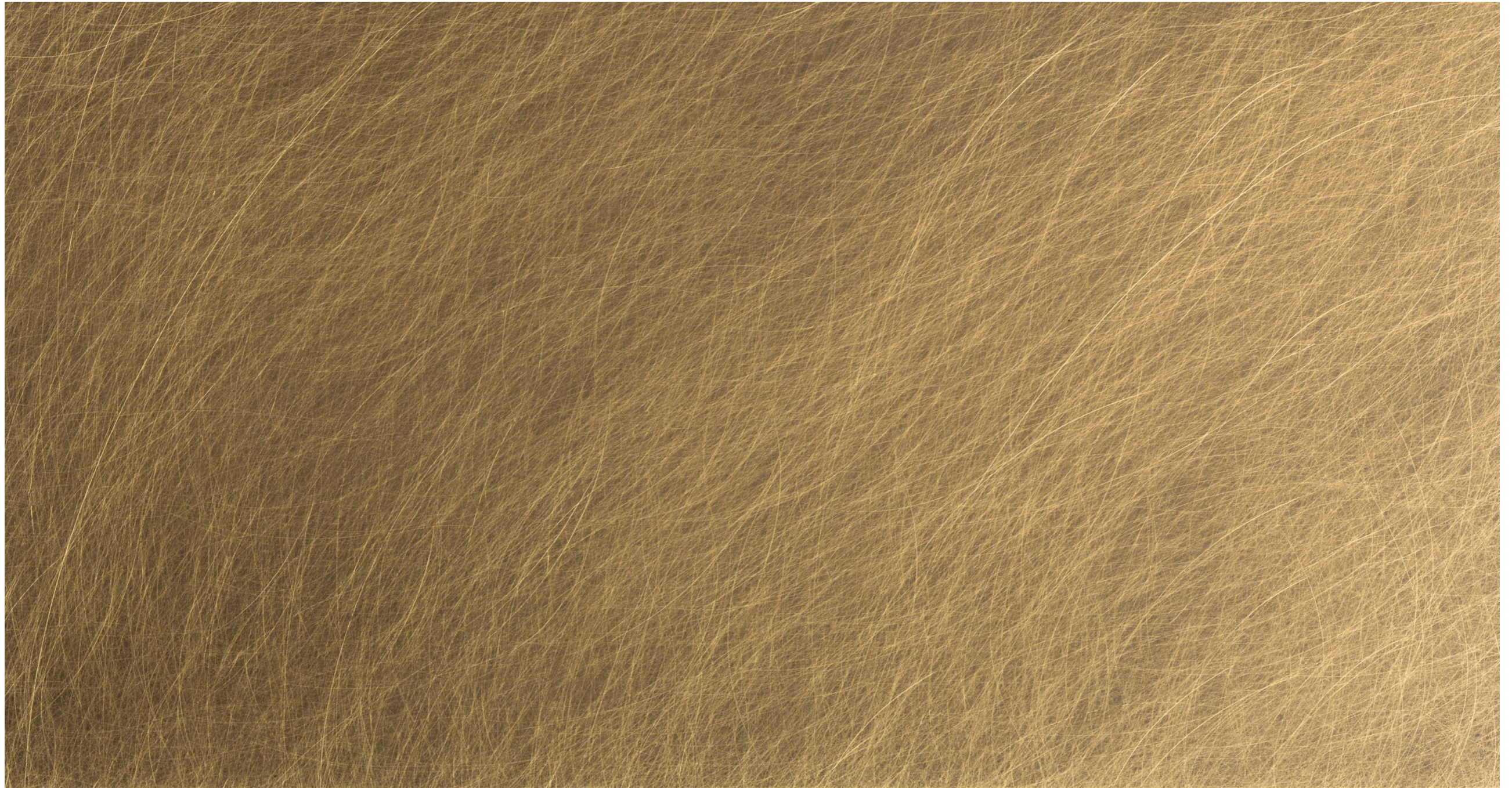
Handcraft finishing created for indoor and outdoor use. Brushed brass is obtained manually with Scotch-Brite, than protected with a transparent varnish. Differences compared to the sample provided are not to be considered as a manufacturing defect, but as a feature of the manual processing, that may be susceptible to variances in color and homogeneity. If placed outside, the finishes can experience dissimilar color alteration, which should not be considered faults. For cleaning and maintenance only use a cotton cloth dampened with water or specific neutral products for varnished surfaces. Do not use abrasive cloths, solvents, alcohol or strong detergents. Dry the surface thoroughly in case of standing water



ORBITALE DELABRÉ BRASS G3

G3

Handcraft finishing created for indoor and outdoor use. It consists in several phases: brass oxidation, manual brushing to get the "scratched" effect and application of a protective, transparent varnish. Differences compared to the sample provided are not to be considered as a manufacturing defect, but as a feature of the manual processing, that may be susceptible to variances in color and homogeneity. If placed outside, the finishes can experience dissimilar color alteration, which should not be considered faults. For cleaning and maintenance only use a cotton cloth dampened with water or specific neutral products for varnished surfaces. Do not use abrasive cloths, solvents, alcohol or strong detergents



STRIPED DELABRÉ BRASS G7 G7

Handcraft finishing created for indoor and outdoor use. It consists in several manual phases: brass oxidation, manual brushing with Scotch-Brite to get the "striped" effect and the application of a protective, transparent varnish. Differences compared to the sample provided are not to be considered as a manufacturing defect, but as a feature of the manual processing, that may be susceptible to variances in color and homogeneity. If placed outside, the finishes can experience dissimilar color alteration, which should not be considered faults. For cleaning and maintenance only use a cotton cloth dampened with water or specific neutral products for varnished surfaces.



DEMAREA BRASS M6 M6

Handcrafted finishing designed by Zanellato/Bortotto, developed for indoor and outdoor use. Overlapping manual oxidations applied on brass create watercolor stratified effects that remind us of the waves that string on the shore. Subsequently it is lacquered with a protective, transparent varnish. Differences compared to the sample provided are not to be considered as a manufacturing defect, but as a feature of the manual processing, that may be susceptible to variances in color and homogeneity. If placed outside, the finishes can experience dissimilar color alteration, which should not be considered faults. For cleaning and maintenance only use a cotton cloth dampened with water or specific neutral products for varnished surfaces.



DEOPALE BRASS M3

M3

Handcraft finishing created for indoor and outdoor. The manual oxidation of brass giving its particular chromatic effects, such as the light games of the fire opal, characterized by a yellow background with reflections that can be particularly vivid and bright, changing in iridescent tones from red to orange. Subsequently it is lacquered with a protective, transparent varnish. Differences compared to the sample provided are not to be considered as a manufacturing defect, but as a feature of the manual processing, that may be susceptible to variances in color and homogeneity. If placed outside, the finishes can experience dissimilar color alteration, which should not be considered faults. For cleaning and maintenance only use a cotton cloth dampened with water or specific neutral products for varnished surfaces.



DESATÈN BRASS M16
M16

Handcraft finishing created for indoor use only. Brass is handmade hammered, subsequently it is polished and lacquered with a semi glossy, protective, transparent varnish. Differences compared to the sample provided are not to be considered as a manufacturing defect, but as a feature of the manual processing, that may be susceptible to variances in color and homogeneity. Samples images are an indication only and do not replace the use of real ones, since it is not possible to guarantee a reproduction identical to the original.



DESALT BRASS M7

M7

Handcraft finishing created for indoor and outdoor use. Brass undergoes manual oxidation treatment through a saline solution that, left in direct contact with brass for pre-established times, gives particular chromatic effects. Subsequently it is lacquered with a protective, transparent varnish. Differences compared to the sample provided are not to be considered as a manufacturing defect, but as a feature of the manual processing, that may be susceptible to variances in color and homogeneity. If placed outside, the finishing can experience dissimilar color alteration, which should not be considered faults. For cleaning and maintenance only use a cotton cloth dampened with water or specific neutral products for varnished surfaces.



BRONZED DEMAISTRAL BRASS F3 F3

Handcraft finishing created for indoor and outdoor use. It consists in coloring brass, involving several phases: burnishing, manual brushing to get the "scratched" effect and application of a protective, transparent varnish. The application of this finishing is not advisable on surfaces subject to daily wear and tear (ex: table tops and/or floors). Differences compared to the sample provided are not to be considered as a manufacturing defect, but as a feature of the manual processing, that may be susceptible to variances in color and homogeneity. If placed outside, the finishes can experience dissimilar color alteration, which should not be considered faults. For cleaning and maintenance only use a cotton cloth dampened with water or specific neutral products for varnished surfaces.



HAMMERED POLISHED BRASS G8 G8

Handcraft finishing created for indoor use only. Brass is handmade hammered, subsequently it is polished and lacquered with a glossy, protective, transparent varnish. Differences compared to the sample provided are not to be considered as a manufacturing defect, but as a feature of the manual processing, that may be susceptible to variances in color and homogeneity. For cleaning and maintenance only use a cotton cloth dampened with water or specific neutral products for varnished surfaces. Do not use abrasive cloths, solvents, alcohol or strong detergents



DEDARIÉ STAINLESS STEEL E7

Handcraft finishing created for indoor and outdoor use. Stainless steel undergoes manual oxidation treatment to obtain a homogeneous shade that goes from gray to bronze. Subsequently it is lacquered with a protective, transparent varnish. Differences compared to the sample provided are not to be considered as a manufacturing defect, but as a feature of the manual processing, that may be susceptible to variances in colour and homogeneity. For cleaning and maintenance only use a cotton cloth dampened with water or specific neutral products for varnished surfaces. Do not use abrasive cloths, solvents, alcohol or strong detergents. Dry the surface thoroughly in case of standing water.



DEDEEP STAINLESS STEEL G12 G12

Handcraft finishing created for indoor and outdoor use. Stainless steel undergoes manual oxidation treatment to obtain particular chromatic effects made of unexpected grey and blue tones. Subsequently it is lacquered with a protective, transparent varnish. Differences compared to the sample provided are not to be considered as a manufacturing defect, but as a feature of the manual processing, that may be susceptible to variances in color and homogeneity. For cleaning and maintenance only use a cotton cloth dampened with water or specific neutral products for varnished surfaces. Do not use abrasive cloths, solvents, alcohol or strong detergents. Dry the surface thoroughly in case of standing water.



SATIN STAINLESS STEEL D1 D1

Handcraft finishing created for indoor and outdoor use. Satin stainless steel AISI 304 is obtained manually by using Scotch-Brite. If used outdoors, the satin surface may be affected by marks or rust spots, due to external agents found in the air or in the surrounding environment. For use in seafront areas or other particularly harsh environmental situations, satin stainless steel AISI 316 is available on request, resistant to saline fog. Differences compared to the sample provided are not to be considered as a manufacturing defect, but as a feature of the manual processing, that may be susceptible to variances in color and homogeneity.



BRUSHED STAINLESS STEEL M11 M11

Handcraft finishing created for indoor and outdoor use. Satin stainless steel AISI 304 is obtained manually by using Scotch-Brite. If used outdoors, the satin surface may be affected by marks or rust spots, due to external agents found in the air or in the surrounding environment. For use in seafront areas or other particularly harsh environmental situations, satin stainless steel AISI 316 is available on request, resistant to saline fog. Differences compared to the sample provided are not to be considered as a manufacturing defect, but as a feature of the manual processing, that may be susceptible to variances in color and homogeneity.



POLISHED STAINLESS STEEL D2 D2

Polished stainless steel AISI 304 for indoor and outdoor use. If used outdoors, the surface may be affected by marks or rust spots, due to external agents found in the air or in the surrounding environment. For use in seafront areas or other particularly harsh environmental situations, polished stainless steel AISI 316 is available on request, resistant to saline fog. For cleaning and maintenance only use a cotton cloth dampened with water or specific products for stainless steel



DELABRÉ STAINLESS STEEL E11 E11

Handcraft finishing created for indoor use only. Stainless steel undergoes manual oxidation treatment to obtain particular chromatic cloud effects. Subsequently it is lacquered with a protective, transparent varnish. Differences compared to the sample provided are not to be considered as a manufacturing defect, but as a feature of the manual processing, that may be susceptible to variances in color and homogeneity. For cleaning and maintenance only use a cotton cloth dampened with water or specific neutral products for varnished surfaces. Do not use abrasive cloths, solvents, alcohol or strong detergents



ORBITALE DELABRÉ STAINLESS STEEL G2 G2

Handcraft finishing created for indoor and outdoor use. It consists in several manual phases: stainless steel oxidation, manual brushing to get the "scratched" effect and application of a protective, transparent varnish. Differences compared to the sample provided are not to be considered as a manufacturing defect, but as a feature of the manual processing, that may be susceptible to variances in color and homogeneity. If placed outside, the finishes can experience dissimilar color alteration, which should not be considered faults. For cleaning and maintenance only use a cotton cloth dampened with water or specific neutral products for varnished surfaces



STRIPED DELABRÉ STAINLESS STEEL E6 E6

Handcraft finishing created for indoor and outdoor use. It consists in several manual phases: oxidation, manual brushing with Scotch-Brite to get the "striped" effect and the application of a protective, transparent varnish. Differences compared to the sample provided are not to be considered as a manufacturing defect, but as a feature of the manual processing, that may be susceptible to variances in color and homogeneity. For cleaning and maintenance only use a cotton cloth dampened with water or specific neutral products for varnished surfaces. Do not use abrasive cloths, solvents, alcohol or strong detergents



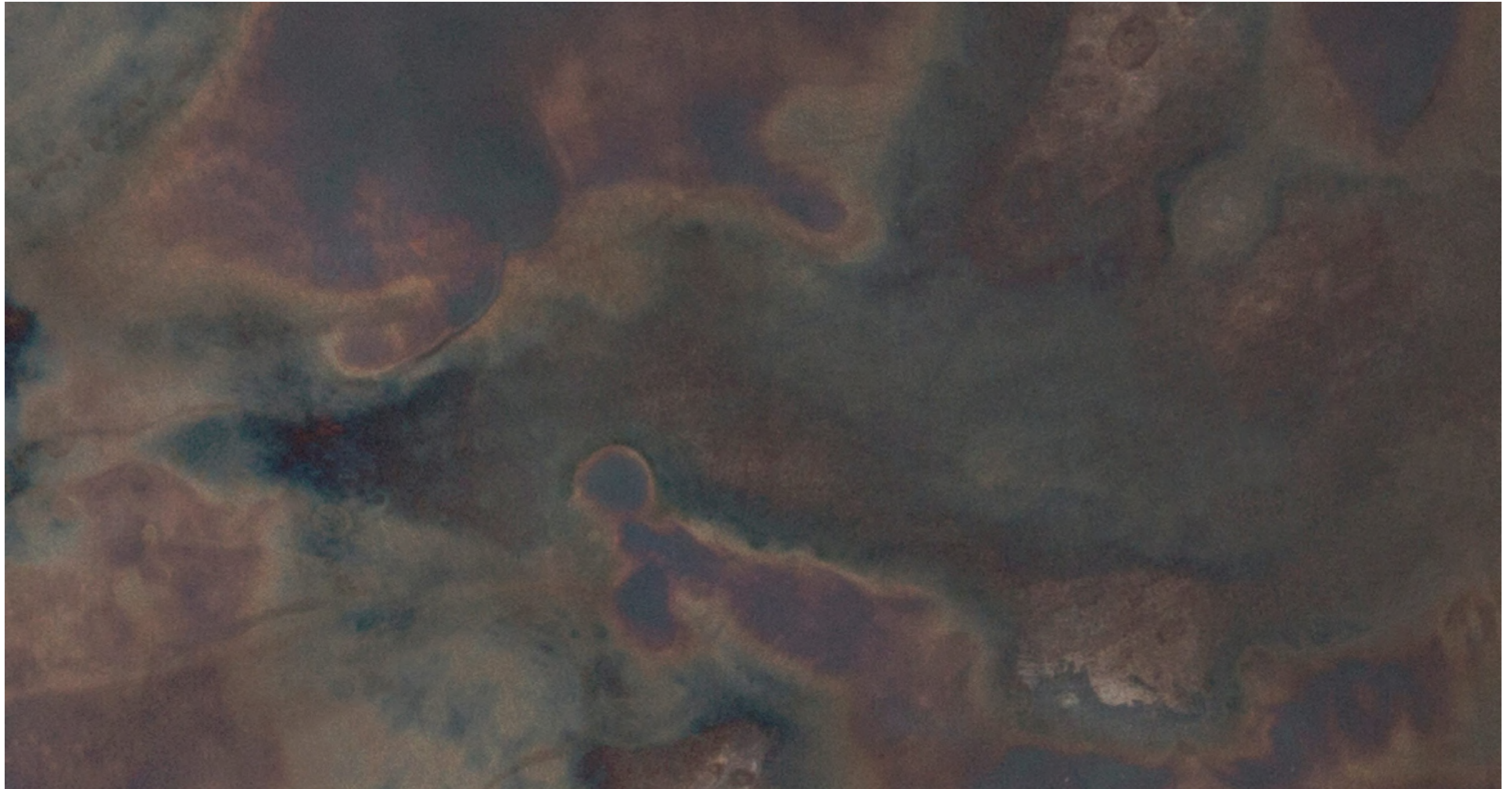
DEMAREA STAINLESS STEEL M4 M4

Handcrafted finishing designed by Zanellato/Bortotto, developed and handcrafted for indoor and outdoor use. Overlapping manual oxidations applied on brass create watercolors stratified effects that remind us of the waves that string on the shore. Subsequently it is lacquered with a protective, transparent varnish. Differences compared to the sample provided are not to be considered as a manufacturing defect, but as a feature of the manual processing, that may be susceptible to variances in color and homogeneity. If placed outside, the finishes can experience dissimilar color alteration, which should not be considered faults.



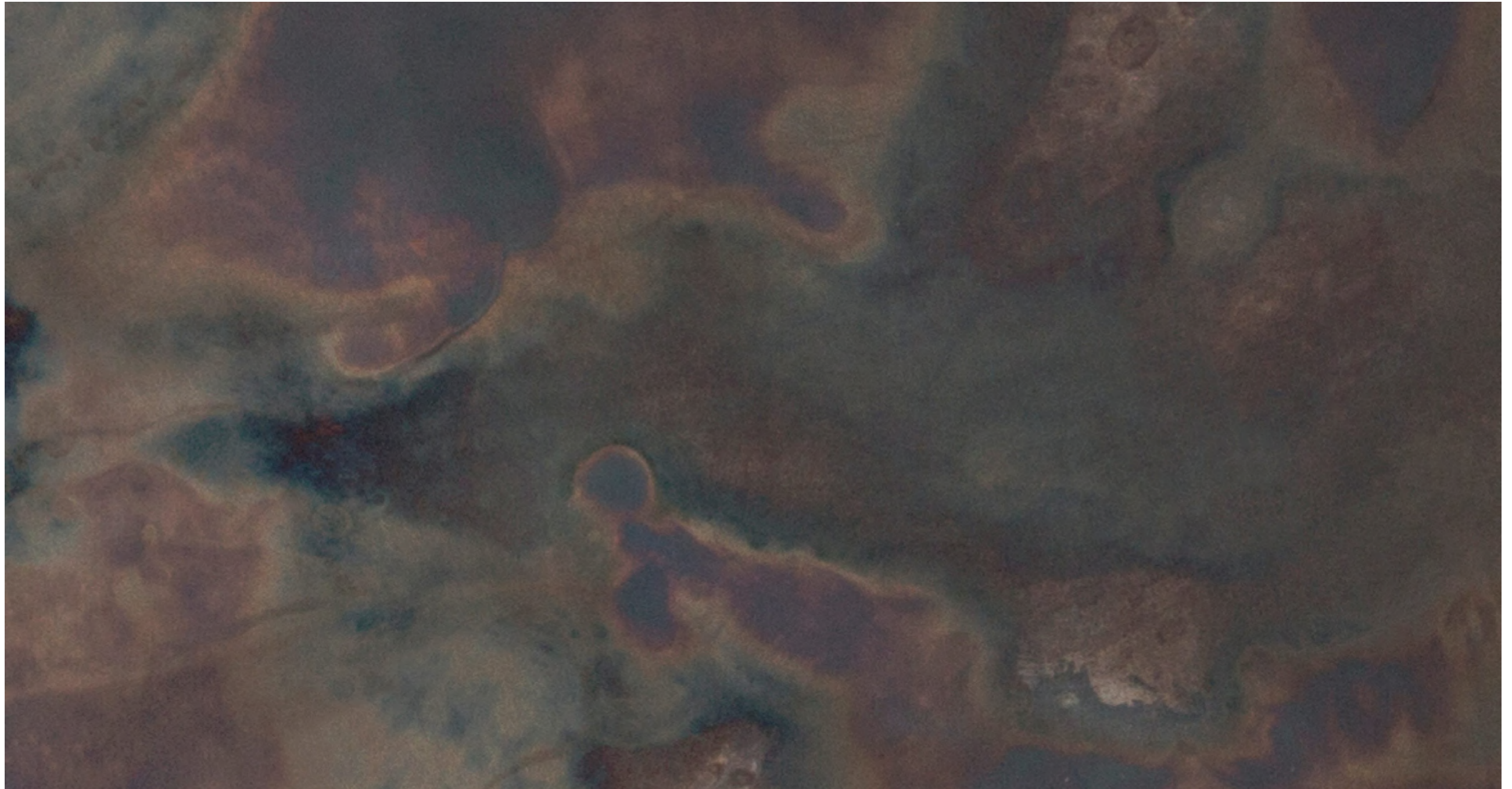
DEOPALE STAINLESS STEEL M0 M0

Handcraft finishing created for indoor and outdoor. The manual oxidation of stainless steel giving its particular chromatic effects, such as the light games of the black opal, characterized by a dark grey background with reflections that can be particularly vivid and bright, changing in iridescent tones from blue to green. Subsequently it is lacquered with a protective, transparent varnish. Differences compared to the sample provided are not to be considered as a manufacturing defect, but as a feature of the manual process, that may be susceptible to variances in color and homogeneity.



DELABRÉ B STAINLESS STEEL E5
E5

Handcraft finishing created for indoor and outdoor use. Stainless steel undergoes manual oxidation treatment to obtain a homogeneous shade that goes from gray to brown. Subsequently it is lacquered with a protective, transparent varnish. Differences compared to the sample provided are not to be considered as a manufacturing defect, but as a feature of the manual processing, that may be susceptible to variances in color and homogeneity.



MARRON SABLÉ E9 E9

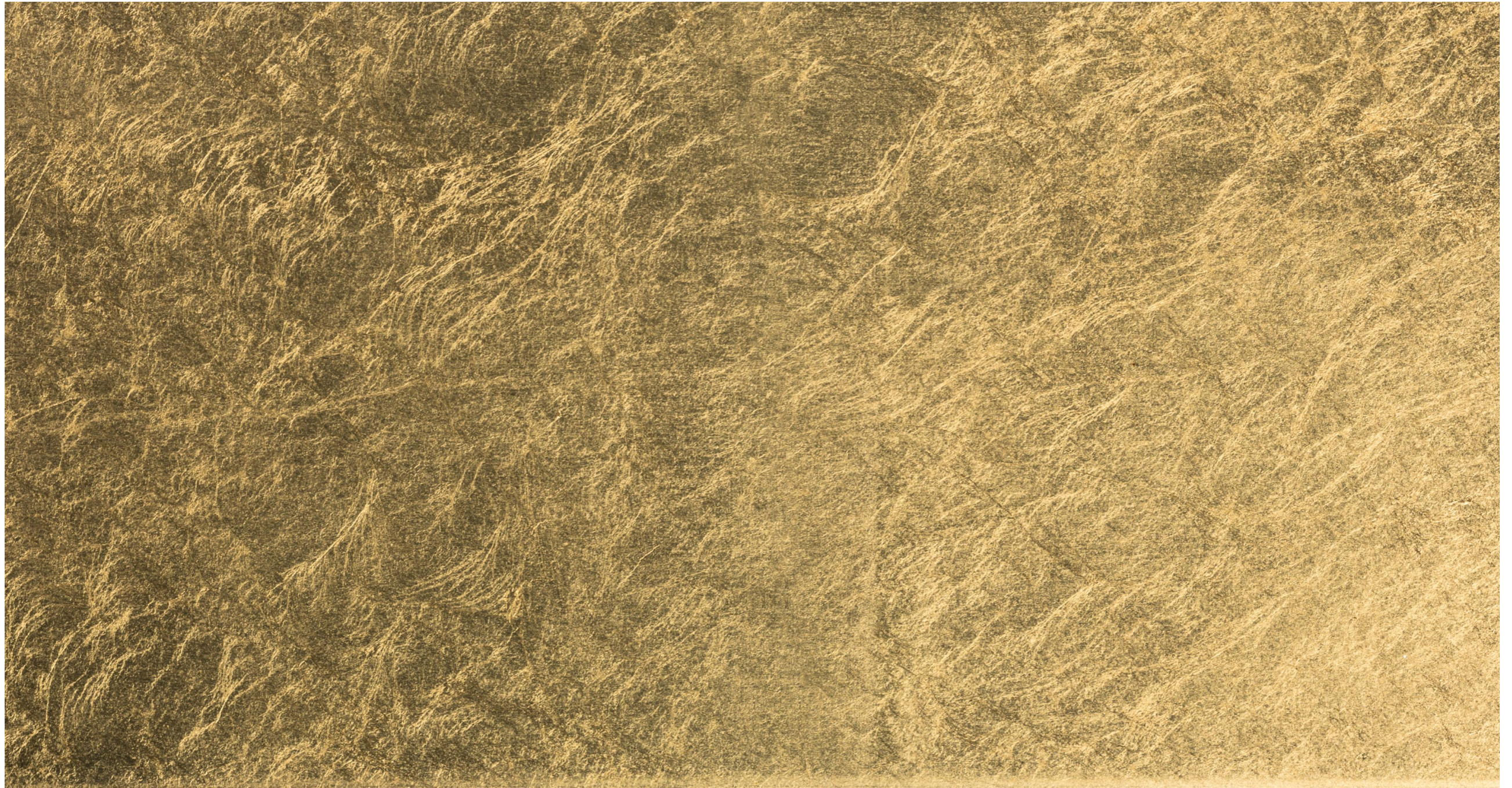
Handcraft finishing created which consists in embossed powder coating on stainless steel AISI 304. As the coating may be applied on iron and stainless steel, the lacquered objects may be used for indoor and outdoor. The powder coating is applied electrostatically. The process is divided in different phases, ending with the object that goes through a furnace at 180°, where the powder melts and polymerizes, covering the object with a thin but resistant and homogeneous coat of paint. The finishing “sablé” is recommended for outdoor furnishing because it is particularly resistant.



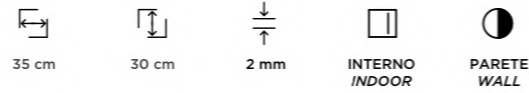
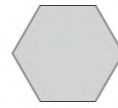
GOLDEN LEAF D9

D9

Handcraft finishing created which consists in the application of gold leaf on iron, in 8x8 cm sheets, lacquered with a glossy, protective, transparent varnish. Suitable for indoor use only. Differences compared to the sample provided are not to be considered as a manufacturing defect, but as a feature of the manual processing, that may be susceptible to variances in color and homogeneity. For cleaning and maintenance only use a cotton cloth dampened with water or specific neutral products for varnished surfaces. Do not use abrasive cloths, solvents, alcohol or strong detergents. Dry the surface thoroughly in case of standing water. Samples images are an indication only and do not replace the use of real ones, since it is not possible to guarantee a reproduction identical to the original.



FORMA 35x30



G1

CODICE CODE	IN	OUT	MATERIALE MATERIAL	FINITURA FINISHING	COD
DCS104-G1	•		Lamiera nera Natural black iron	DeLabré DeLabré	G1

ORDINE MINIMO MINIMUM ORDER
15 pezzi/pieces

M^2 13 pz/m²



E5

G2

E6

CODICE CODE	IN	OUT	MATERIALE MATERIAL	FINITURA FINISHING	COD
DCS104-E5	•		Acciaio inox AISI 304 AISI 304 Stainless steel	DeLabré B DeLabré B	E5
DCS104-G2	•		Acciaio inox AISI 304 AISI 304 Stainless steel	DeLabré orbitale Orbitale DeLabré	G2
DCS104-E6*	•		Acciaio inox AISI 304 AISI 304 Stainless steel	DeLabré striato* Striped DeLabré*	E6

ORDINE MINIMO MINIMUM ORDER
15 pezzi/pieces
15 pezzi/pieces
15 pezzi/pieces

M^2 13 pz/m²



M9

F2

G3

G7

CODICE CODE	IN	OUT	MATERIALE MATERIAL	FINITURA FINISHING	COD
DCS104-M9	•		Ottone Brass	Spazzolato Brushed	M9
DCS104-F2	•		Ottone Brass	DeLabré DeLabré	F2
DCS104-G3	•		Ottone Brass	DeLabré orbitale Orbitale DeLabré	G3
DCS104-G7*	•		Ottone Brass	DeLabré striato* Striped DeLabré*	G7

ORDINE MINIMO MINIMUM ORDER
15 pezzi/pieces
15 pezzi/pieces
15 pezzi/pieces
15 pezzi/pieces

M^2 13 pz/m²



M10

G5

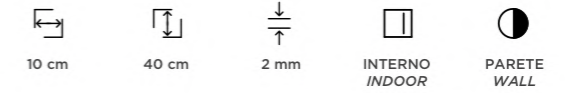
G4

G6

CODICE CODE	IN	OUT	MATERIALE MATERIAL	FINITURA FINISHING	COD
DCS104-M10	•		Rame Copper	Spazzolato Brushed	M10
DCS104-G5	•		Rame Copper	DeLabré DeLabré	G5
DCS104-G4	•		Rame Copper	DeLabré orbitale Orbitale DeLabré	G4
DCS104-G6*	•		Rame Copper	DeLabré striato* Striped DeLabré*	G6

ORDINE MINIMO MINIMUM ORDER
15 pezzi/pieces
15 pezzi/pieces
15 pezzi/pieces
15 pezzi/pieces

FORMA 10x40

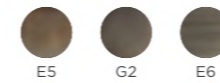


G1

CODICE CODE	IN	OUT	MATERIALE MATERIAL	FINITURA FINISHING	COD
DCS100-G1	•		Lamiera nera Natural black iron	DeLabré DeLabré	G1

ORDINE MINIMO MINIMUM ORDER
25 pezzi/pieces

M^2 25 pz/m²



E5

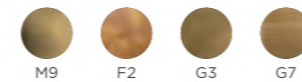
G2

E6

CODICE CODE	IN	OUT	MATERIALE MATERIAL	FINITURA FINISHING	COD
DCS100-E5	•		Acciaio inox AISI 304 AISI 304 Stainless steel	DeLabré B DeLabré B	E5
DCS100-G2	•		Acciaio inox AISI 304 AISI 304 Stainless steel	DeLabré orbitale Orbitale DeLabré	G2
DCS100-E6*	•		Acciaio inox AISI 304 AISI 304 Stainless steel	DeLabré striato* Striped DeLabré*	E6

ORDINE MINIMO MINIMUM ORDER
25 pezzi/pieces
25 pezzi/pieces
25 pezzi/pieces

M^2 25 pz/m²



M9

F2

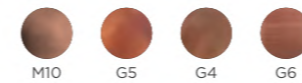
G3

G7

CODICE CODE	IN	OUT	MATERIALE MATERIAL	FINITURA FINISHING	COD
DCS100-M9	•		Ottone Brass	Spazzolato Brushed	M9
DCS100-F2	•		Ottone Brass	DeLabré DeLabré	F2
DCS100-G3	•		Ottone Brass	DeLabré orbitale Orbitale DeLabré	G3
DCS100-G7*	•		Ottone Brass	DeLabré striato* Striped DeLabré*	G7

ORDINE MINIMO MINIMUM ORDER
25 pezzi/pieces
25 pezzi/pieces
25 pezzi/pieces
25 pezzi/pieces

M^2 25 pz/m²



M10

G5

G4

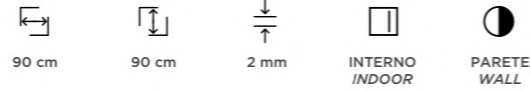
G6

CODICE CODE	IN	OUT	MATERIALE MATERIAL	FINITURA FINISHING	COD
DCS100-M10	•		Rame Copper	Spazzolato Brushed	M10
DCS100-G5	•		Rame Copper	DeLabré DeLabré	G5
DCS100-G4	•		Rame Copper	DeLabré orbitale Orbitale DeLabré	G4
DCS100-G6*	•		Rame Copper	DeLabré striato* Striped DeLabré*	G6

ORDINE MINIMO MINIMUM ORDER
25 pezzi/pieces
25 pezzi/pieces
25 pezzi/pieces
25 pezzi/pieces

FORMA 90x90

Imballo escluso, da quotare al momento dell'ordine
Packaging excluded to be quoted at order confirmation

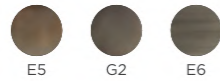


G1

CODICE CODE	IN	OUT	MATERIALE MATERIAL	FINITURA FINISHING	COD
DCS103-G1	•		Lamiera nera Natural black iron	DeLabré DeLabré	G1

ORDINE MINIMO MINIMUM ORDER
1 pezzo/piece

M² 2 pz/m²



E5

G2

E6

CODICE CODE	IN	OUT	MATERIALE MATERIAL	FINITURA FINISHING	COD
DCS103-E5	•		Acciaio inox AISI 304 AISI 304 Stainless steel	DeLabré B DeLabré B	E5
DCS103-G2	•		Acciaio inox AISI 304 AISI 304 Stainless steel	DeLabré orbitale Orbitale DeLabré	G2
DCS103-E6*	•		Acciaio inox AISI 304 AISI 304 Stainless steel	DeLabré striato* Striped DeLabré*	E6

ORDINE MINIMO MINIMUM ORDER
1 pezzo/piece
1 pezzo/piece
1 pezzo/piece

M² 2 pz/m²



M9

F2

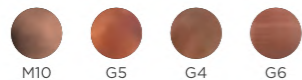
G3

G7

CODICE CODE	IN	OUT	MATERIALE MATERIAL	FINITURA FINISHING	COD
DCS103-M9	•		Ottone Brass	Spazzolato Brushed	M9
DCS103-F2	•		Ottone Brass	DeLabré DeLabré	F2
DCS103-G3	•		Ottone Brass	DeLabré orbitale Orbitale DeLabré	G3
DCS103-G7*	•		Ottone Brass	DeLabré striato* Striped DeLabré*	G7

ORDINE MINIMO MINIMUM ORDER
1 pezzo/piece
1 pezzo/piece
1 pezzo/piece
1 pezzo/piece

M² 2 pz/m²



M10

G5

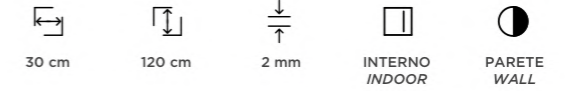
G4

G6

CODICE CODE	IN	OUT	MATERIALE MATERIAL	FINITURA FINISHING	COD
DCS103-M10	•		Rame Copper	Spazzolato Brushed	M10
DCS103-G5	•		Rame Copper	DeLabré DeLabré	G5
DCS103-G4	•		Rame Copper	DeLabré orbitale Orbitale DeLabré	G4
DCS103-G6*	•		Rame Copper	DeLabré striato* Striped DeLabré*	G6

ORDINE MINIMO MINIMUM ORDER
1 pezzo/piece
1 pezzo/piece
1 pezzo/piece
1 pezzo/piece

FORMA 30x120

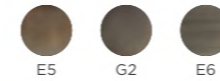


G1

CODICE CODE	IN	OUT	MATERIALE MATERIAL	FINITURA FINISHING	COD
DCS101-G1	•		Lamiera nera Natural black iron	DeLabré DeLabré	G1

ORDINE MINIMO MINIMUM ORDER
3 pezzi/pieces

M² 3 pz/m²



E5

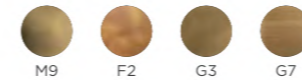
G2

E6

CODICE CODE	IN	OUT	MATERIALE MATERIAL	FINITURA FINISHING	COD
DCS101-E5	•		Acciaio inox AISI 304 AISI 304 Stainless steel	DeLabré B DeLabré B	E5
DCS101-G2	•		Acciaio inox AISI 304 AISI 304 Stainless steel	DeLabré orbitale Orbitale DeLabré	G2
DCS101-E6*	•		Acciaio inox AISI 304 AISI 304 Stainless steel	DeLabré striato* Striped DeLabré*	E6

ORDINE MINIMO MINIMUM ORDER
3 pezzi/pieces
3 pezzi/pieces
3 pezzi/pieces

M² 3 pz/m²



M9

F2

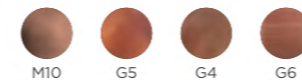
G3

G7

CODICE CODE	IN	OUT	MATERIALE MATERIAL	FINITURA FINISHING	COD
DCS101-M9	•		Ottone Brass	Spazzolato Brushed	M9
DCS101-F2	•		Ottone Brass	DeLabré DeLabré	F2
DCS101-G3	•		Ottone Brass	DeLabré orbitale Orbitale DeLabré	G3
DCS101-G7*	•		Ottone Brass	DeLabré striato* Striped DeLabré*	G7

ORDINE MINIMO MINIMUM ORDER
3 pezzi/pieces
3 pezzi/pieces
3 pezzi/pieces
3 pezzi/pieces

M² 3 pz/m²



M10

G5

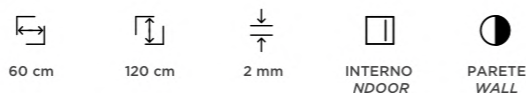
G4

G6

CODICE CODE	IN	OUT	MATERIALE MATERIAL	FINITURA FINISHING	COD
DCS101-M10	•		Rame Copper	Spazzolato Brushed	M10
DCS101-G5	•		Rame Copper	DeLabré DeLabré	G5
DCS101-G4	•		Rame Copper	DeLabré orbitale Orbitale DeLabré	G4
DCS101-G6*	•		Rame Copper	DeLabré striato* Striped DeLabré*	G6

ORDINE MINIMO MINIMUM ORDER
3 pezzi/pieces
3 pezzi/pieces
3 pezzi/pieces
3 pezzi/pieces

FORMA 60x120

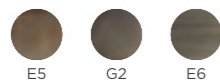


G1

CODICE CODE	IN	OUT	MATERIALE MATERIAL	FINITURA FINISHING	COD
DCS102-G1	•		Lamiera nera <i>Natural black iron</i>	DeLabré <i>DeLabré</i>	G1

ORDINE MINIMO MINIMUM ORDER
2 pezzi/pieces

M² 2 pz/m²



E5

G2

E6

CODICE CODE	IN	OUT	MATERIALE MATERIAL	FINITURA FINISHING	COD
DCS102-E5	•		Acciaio inox AISI 304 <i>AISI 304 Stainless steel</i>	DeLabré B <i>DeLabré B</i>	E5
DCS102-G2	•		Acciaio inox AISI 304 <i>AISI 304 Stainless steel</i>	DeLabré orbitale <i>Orbitale DeLabré</i>	G2
DCS102-E6*	•		Acciaio inox AISI 304 <i>AISI 304 Stainless steel</i>	DeLabré striato* <i>Striped DeLabré*</i>	E6

ORDINE MINIMO MINIMUM ORDER
2 pezzi/pieces
2 pezzi/pieces
2 pezzi/pieces

M² 2 pz/m²



M9

F2

G3

G7

CODICE CODE	IN	OUT	MATERIALE MATERIAL	FINITURA FINISHING	COD
DCS102-M9	•		Ottone <i>Brass</i>	Spazzolato <i>Brushed</i>	M9
DCS102-F2	•		Ottone <i>Brass</i>	DeLabré <i>DeLabré</i>	F2
DCS102-G3	•		Ottone <i>Brass</i>	DeLabré orbitale <i>Orbitale DeLabré</i>	G3
DCS102-G7*	•		Ottone <i>Brass</i>	DeLabré striato* <i>Striped DeLabré*</i>	G7

ORDINE MINIMO MINIMUM ORDER
2 pezzi/pieces
2 pezzi/pieces
2 pezzi/pieces
2 pezzi/pieces

M² 2 pz/m²



M10

G5

G4

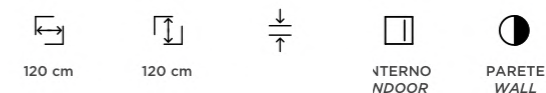
G6

CODICE CODE	IN	OUT	MATERIALE MATERIAL	FINITURA FINISHING	COD
DCS102-M10	•		Rame <i>Copper</i>	Spazzolato <i>Brushed</i>	M10
DCS102-G5	•		Rame <i>Copper</i>	DeLabré <i>DeLabré</i>	G5
DCS102-G4	•		Rame <i>Copper</i>	DeLabré orbitale <i>Orbitale DeLabré</i>	G4
DCS102-G6*	•		Rame <i>Copper</i>	DeLabré striato* <i>Striped DeLabré*</i>	G6

ORDINE MINIMO MINIMUM ORDER
2 pezzi/pieces
2 pezzi/pieces
2 pezzi/pieces
2 pezzi/pieces

FORMA 120x120

Imballo escluso, da quotare al momento dell'ordine
Packaging excluded to be quoted at order confirmation

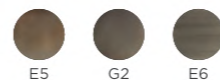


G1

CODICE CODE	IN	OUT	MATERIALE MATERIAL	FINITURA FINISHING	COD
DCS105-G1	•		Lamiera nera <i>Natural black iron</i>	DeLabré <i>DeLabré</i>	G1

ORDINE MINIMO MINIMUM ORDER
1 pezzi/pieces

M² 1 pz/m²



E5

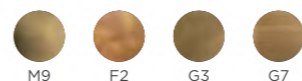
G2

E6

CODICE CODE	IN	OUT	MATERIALE MATERIAL	FINITURA FINISHING	COD
DCS105-E5	•		Acciaio inox AISI 304 <i>AISI 304 Stainless steel</i>	DeLabré B <i>DeLabré B</i>	E5
DCS105-G2	•		Acciaio inox AISI 304 <i>AISI 304 Stainless steel</i>	DeLabré orbitale <i>Orbitale DeLabré</i>	G2
DCS105-E6*	•		Acciaio inox AISI 304 <i>AISI 304 Stainless steel</i>	DeLabré striato* <i>Striped DeLabré*</i>	E6

ORDINE MINIMO MINIMUM ORDER
1 pezzi/pieces
1 pezzi/pieces
1 pezzi/pieces

M² 1 pz/m²



M9

F2

G3

G7

CODICE CODE	IN	OUT	MATERIALE MATERIAL	FINITURA FINISHING	COD
DCS105-M9	•		Ottone <i>Brass</i>	Spazzolato <i>Brushed</i>	M9
DCS105-F2	•		Ottone <i>Brass</i>	DeLabré <i>DeLabré</i>	F2
DCS105-G3	•		Ottone <i>Brass</i>	DeLabré orbitale <i>Orbitale DeLabré</i>	G3
DCS105-G7*	•		Ottone <i>Brass</i>	DeLabré striato* <i>Striped DeLabré*</i>	G7

ORDINE MINIMO MINIMUM ORDER
1 pezzi/pieces
1 pezzi/pieces
1 pezzi/pieces
1 pezzi/pieces

M² 1 pz/m²

FORMA 120x240

Imballo escluso, da quotare al momento dell'ordine
Packaging excluded to be quoted at order confirmation



120 cm



240 cm



2 mm



INTERNO
NDOOR



PARETE
WALL



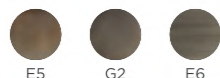
G1

CODICE CODE	IN	OUT	MATERIALE MATERIAL	FINITURA FINISHING	COD
DCS106-G1	•		Lamiera nera Natural black iron	DeLabré DeLabré	G1

ORDINE MINIMO
MINIMUM ORDER

1 pezzi/pieces

M² 1 pz/m²



E5

G2

E6

CODICE CODE	IN	OUT	MATERIALE MATERIAL	FINITURA FINISHING	COD
DCS106-E5	•		Acciaio inox AISI 304 AISI 304 Stainless steel	DeLabré B DeLabré B	E5
DCS106-G2	•		Acciaio inox AISI 304 AISI 304 Stainless steel	DeLabré orbitale Orbitale DeLabré	G2
DCS106-E6*	•		Acciaio inox AISI 304 AISI 304 Stainless steel	DeLabré striato* Striped DeLabré*	E6

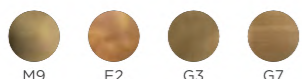
ORDINE MINIMO
MINIMUM ORDER

1 pezzi/pieces

1 pezzi/pieces

1 pezzi/pieces

M² 1 pz/m²



M9

F2

G3

G7

CODICE CODE	IN	OUT	MATERIALE MATERIAL	FINITURA FINISHING	COD
DCS106-M9	•		Ottone Brass	Spazzolato Brushed	M9
DCS106-F2	•		Ottone Brass	DeLabré DeLabré	F2
DCS106-G3	•		Ottone Brass	DeLabré orbitale Orbitale DeLabré	G3
DCS106-G7*	•		Ottone Brass	DeLabré striato* Striped DeLabré*	G7

ORDINE MINIMO
MINIMUM ORDER

1 pezzi/pieces

1 pezzi/pieces

1 pezzi/pieces

1 pezzi/pieces

M² 1 pz/m²

POSSIBILI FINITURE SU RICHIESTA POSSIBLE FINISHES ON REQUEST

FORMA	FINITURE / FINISHES	DCS104-E6	DCS104-G6
35X30	Acciaio inox AISI 304 spazzolato M11, satinato D1, DeLabré E11, DeMarea M4 AISI 304 Stainless steel brushed M11, satin D1, DeLabré E11, DeMarea M4	+15%	
35X30	Ottone spazzolato M9, satinato F1, DeLabré F2, DeMarea M6 Brass brushed M9, satin F1, DeLabré F2, DeMarea M6		
35X30	Rame spazzolato M10, satinato F5, DeLabré G5, DeMarea M5 Copper brushed M10, satin F5, DeLabré G5, DeMarea M5		+15%

FORMA	FINITURE / FINISHES	€ AL DCS100-E6	IECE DCS100-G6
10X40	Acciaio inox AISI 304 spazzolato M11, satinato D1, DeLabré E11, DeMarea M4 AISI 304 Stainless steel brushed M11, satin D1, DeLabré E11, DeMarea M4	+15%	
10X40	Ottone spazzolato M9, satinato F1, DeLabré F2, DeMarea M6 Brass brushed M9, satin F1, DeLabré F2, DeMarea M6		
10X40	Rame spazzolato M10, satinato F5, DeLabré G5, DeMarea M5 Copper brushed M10, satin F5, DeLabré G5, DeMarea M5		+15%

FORMA	FINITURE / FINISHES	€ AL DCS103-E6	IECE DCS103-G6
90X90	Acciaio inox AISI 304 spazzolato M11, satinato D1, DeLabré E11, DeMarea M4 AISI 304 Stainless steel brushed M11, satin D1, DeLabré E11, DeMarea M4	+15%	
90X90	Ottone spazzolato M9, satinato F1, DeLabré F2, DeMarea M6 Brass brushed M9, satin F1, DeLabré F2, DeMarea M6		
90X90	Rame spazzolato M10, satinato F5, DeLabré G5, DeMarea M5 Copper brushed M10, satin F5, DeLabré G5, DeMarea M5		+15%

FORMA	FINITURE / FINISHES	€ AL DCS101-E6	IECE DCS101-G6
30X120	Acciaio inox AISI 304 spazzolato M11, satinato D1, DeLabré E11, DeMarea M4 AISI 304 Stainless steel brushed M11, satin D1, DeLabré E11, DeMarea M4	+15%	
30X120	Ottone spazzolato M9, satinato F1, DeLabré F2, DeMarea M6 Brass brushed M9, satin F1, DeLabré F2, DeMarea M6		
30X120	Rame spazzolato M10, satinato F5, DeLabré G5, DeMarea M5 Copper brushed M10, satin F5, DeLabré G5, DeMarea M5		+15%

FORMA	FINITURE / FINISHES	€ AL DCS102-E6	IECE DCS102-G6
60X120	Acciaio inox AISI 304 spazzolato M11, satinato D1, DeLabré E11, DeMarea M4 AISI 304 Stainless steel brushed M11, satin D1, DeLabré E11, DeMarea M4	+15%	
60X120	Ottone spazzolato M9, satinato F1, DeLabré F2, DeMarea M6 Brass brushed M9, satin F1, DeLabré F2, DeMarea M6		
60X120	Rame spazzolato M10, satinato F5, DeLabré G5, DeMarea M5 Copper brushed M10, satin F5, DeLabré G5, DeMarea M5		+15%

FORMA	FINITURE / FINISHES	€ AL DCS105-E6	IECE DCS105-G6
120X120	Acciaio inox AISI 304 spazzolato M11, satinato D1, DeLabré E11, DeMarea M4 AISI 304 Stainless steel brushed M11, satin D1, DeLabré E11, DeMarea M4	+15%	
120X120	Ottone spazzolato M9, satinato F1, DeLabré F2, DeMarea M6 Brass brushed M9, satin F1, DeLabré F2, DeMarea M6		+15%

FORMA	FINITURE / FINISHES	€ AL DCS106-E6	IECE DCS106-G6
120X240	Acciaio inox AISI 304 spazzolato M11, satinato D1, DeLabré E11, DeMarea M4 AISI 304 Stainless steel brushed M11, satin D1, DeLabré E11, DeMarea M4	+15%	
120X240	Ottone spazzolato M9, satinato F1, DeLabré F2, DeMarea M6 Brass brushed M9, satin F1, DeLabré F2, DeMarea M6		+15%

CUROQ CONNECT ME!

DUBAI INDIA