



MATERIAL INTELLIGENCE.DESIGNED EMOTION

Where matter becomes meaning, and intelligence becomes design

CURIO

To the architects and interior designers shaping the future.

Curoq celebrates an architecture of material conscience — an architecture where every choice of stone, clay, timber, or metal is guided not by availability but by awareness, where intelligence transforms matter into meaning, where empathy ensures craft is honoured, and where every surface is placed not as decoration but as a living participant in design, leaving behind resonance, memory, and feeling that endure far beyond the project itself.

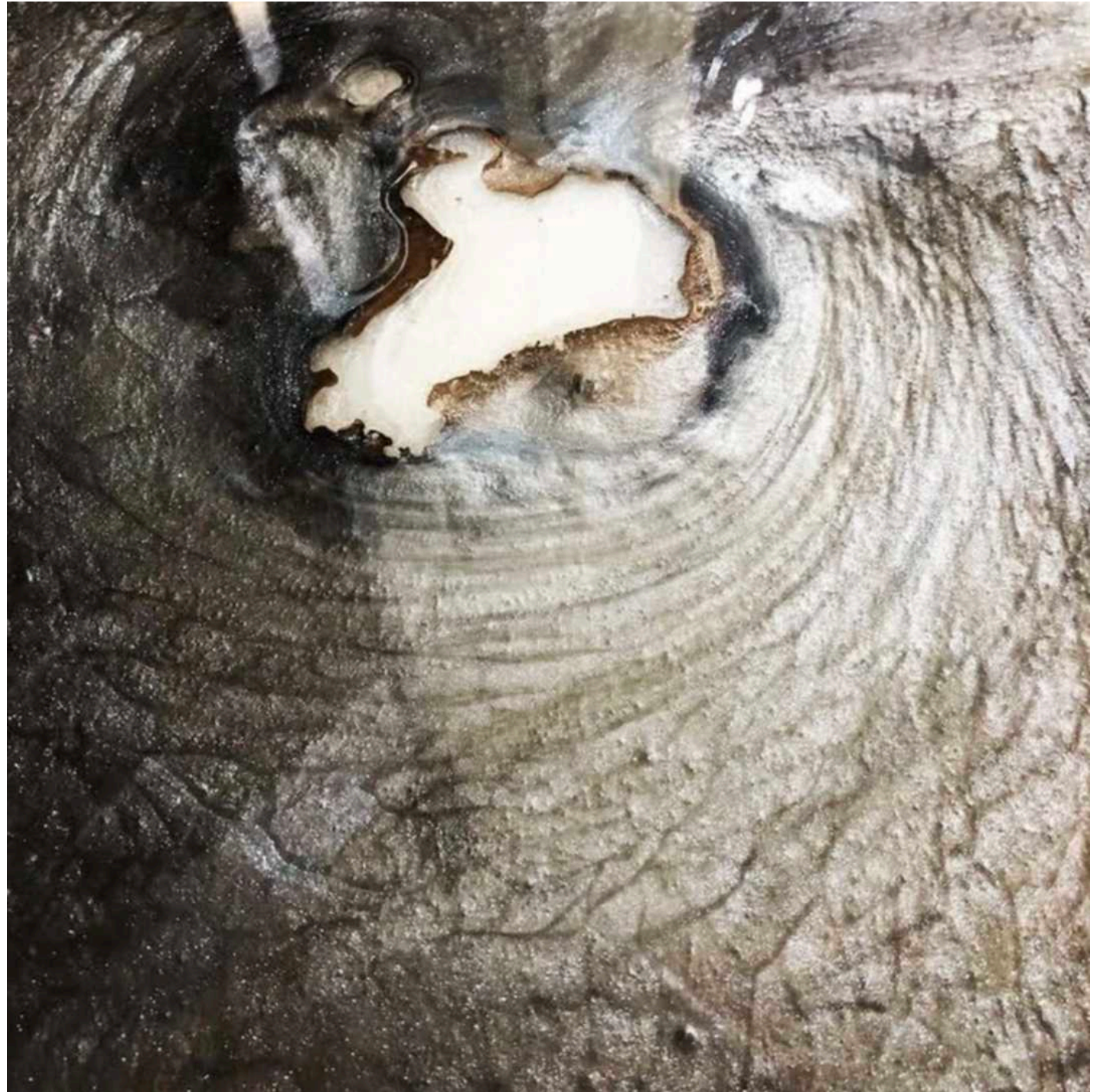
Genesis of Intelligence

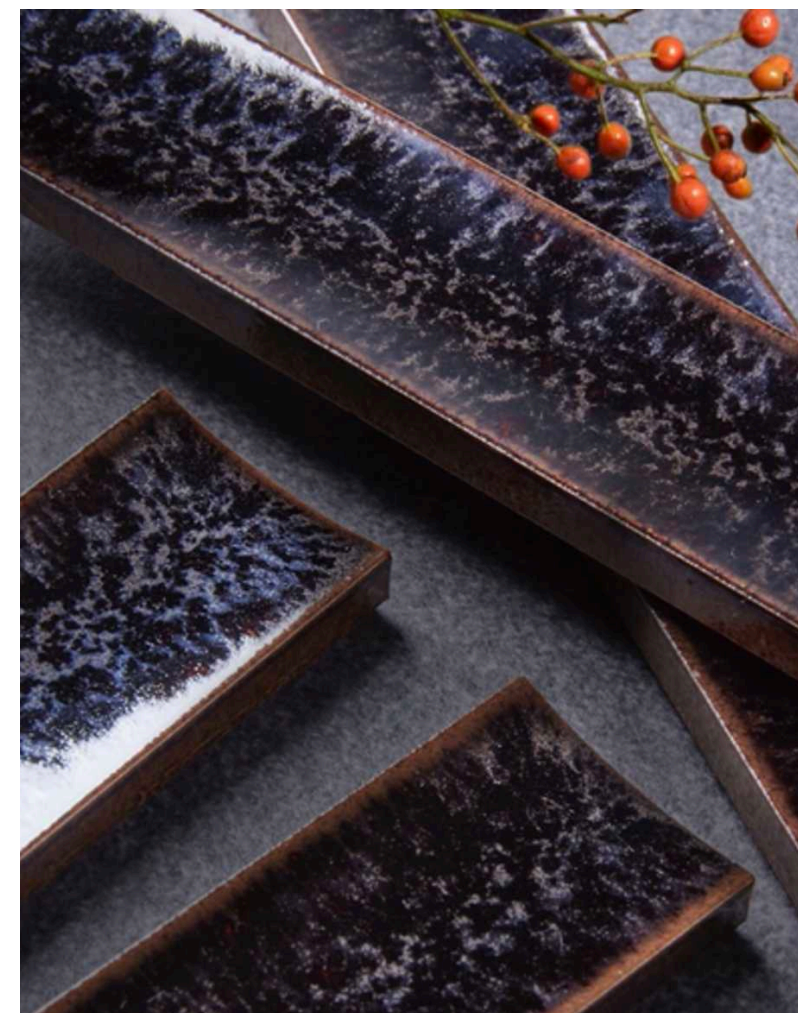
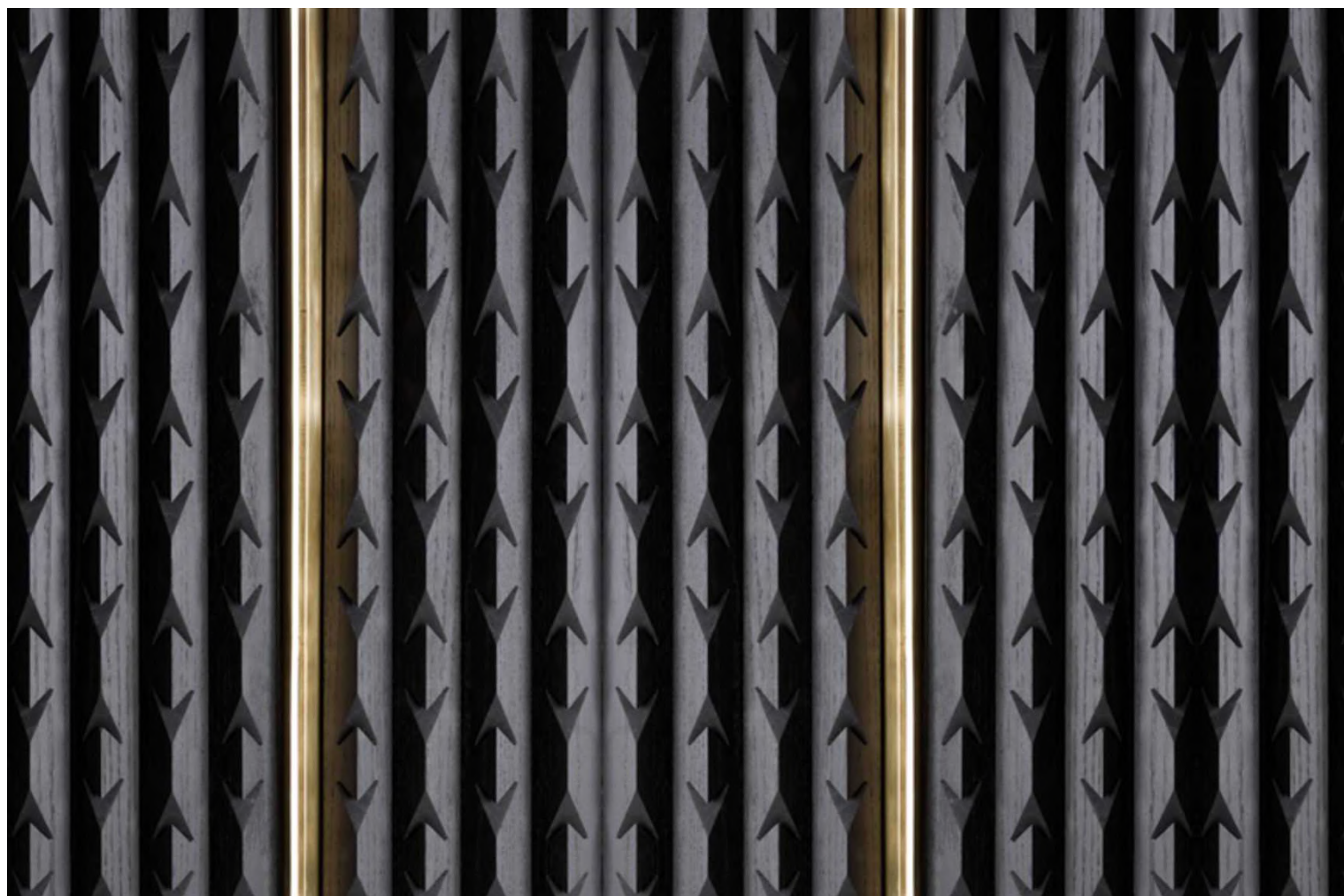
How knowledge shapes material

Genesis of Intelligence is the beginning of architecture itself — the moment when awareness deepens into sensitivity, when thought aligns with silence and proportion, and when knowledge ceases to be information and becomes an act of design.

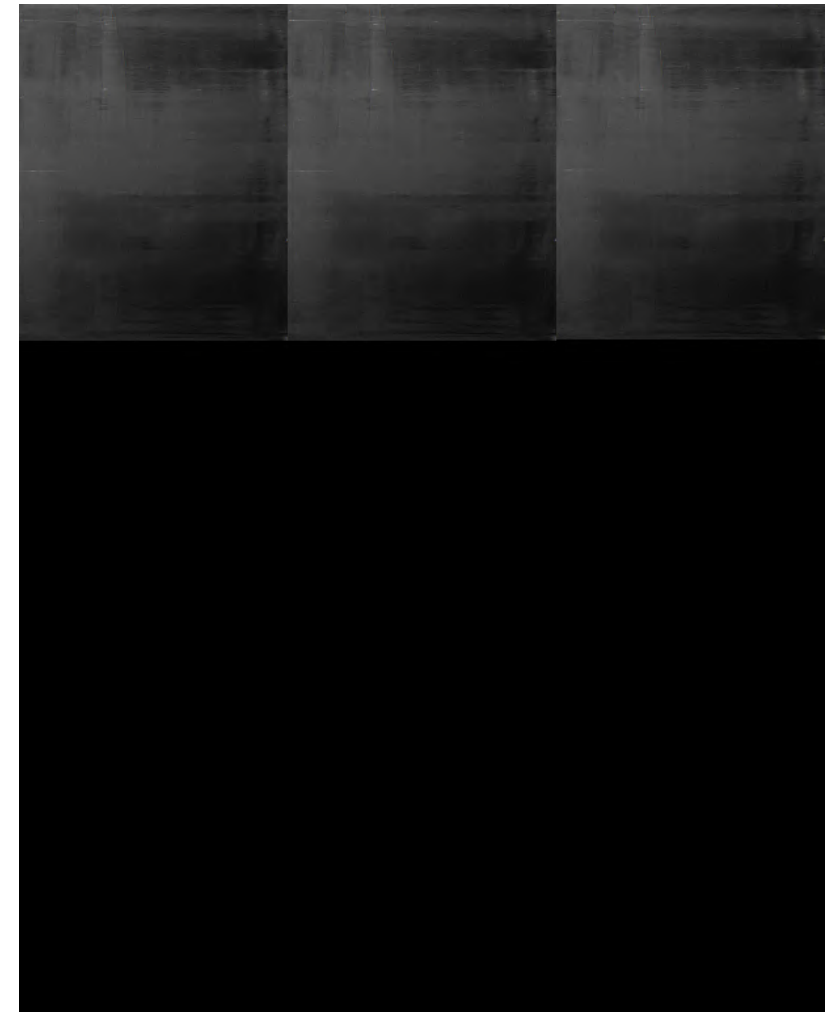


Intelligence is the architect's first foundation.

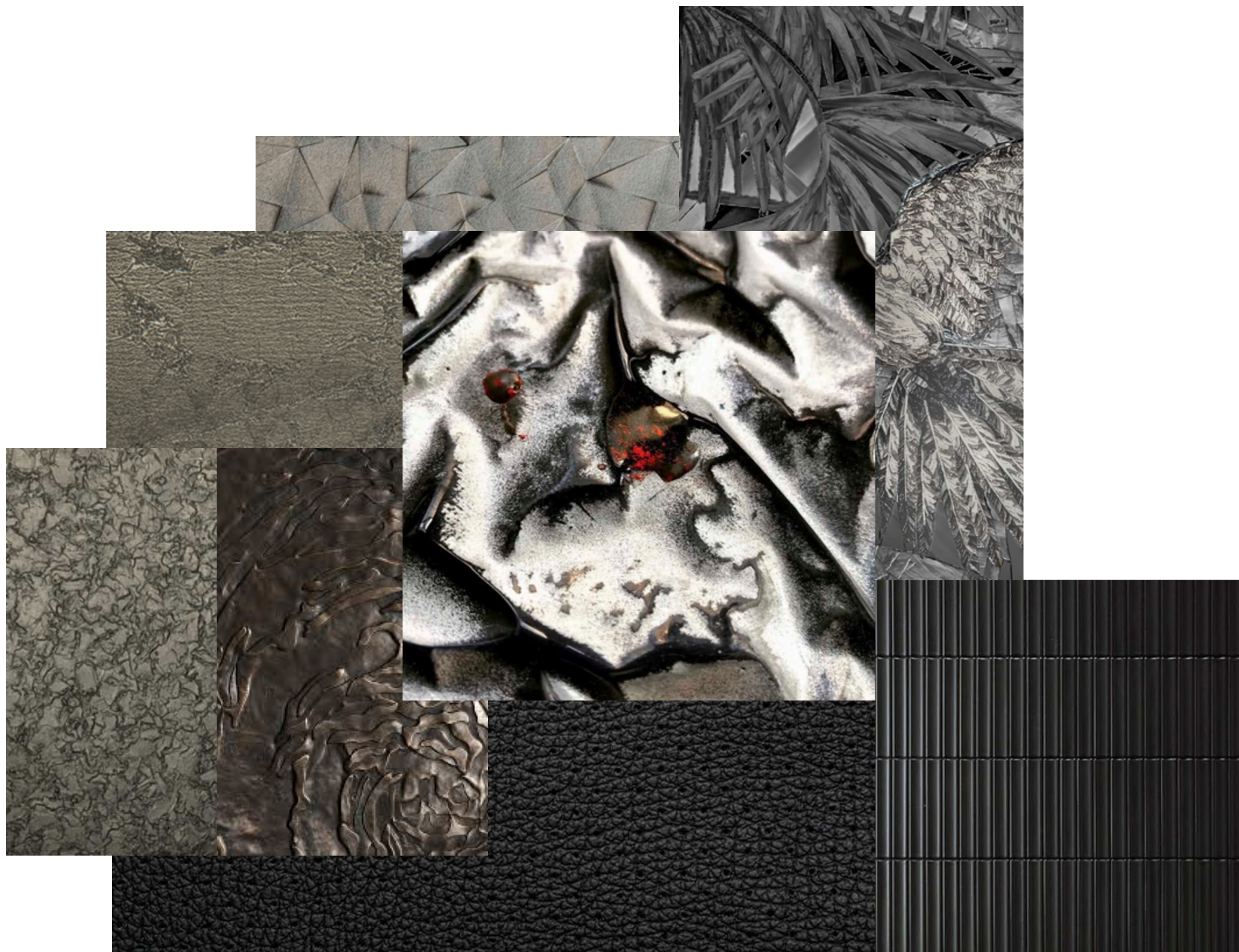




In every surface lies a memory older than design itself. To curate is not only to arrange but to listen — to the signals materials send when placed in rhythm with one another. This is where intelligence begins: not in invention, but in recognition.



“To speak of genesis is to speak of listening — not to voices of others, but to the quiet logic of space, proportion, and light that already exists, waiting for the architect to bring it into form.” — Khan



Our intelligent materials do not mimic; they reveal. Intelligence is the dialogue between matter and maker, between origin and outcome.



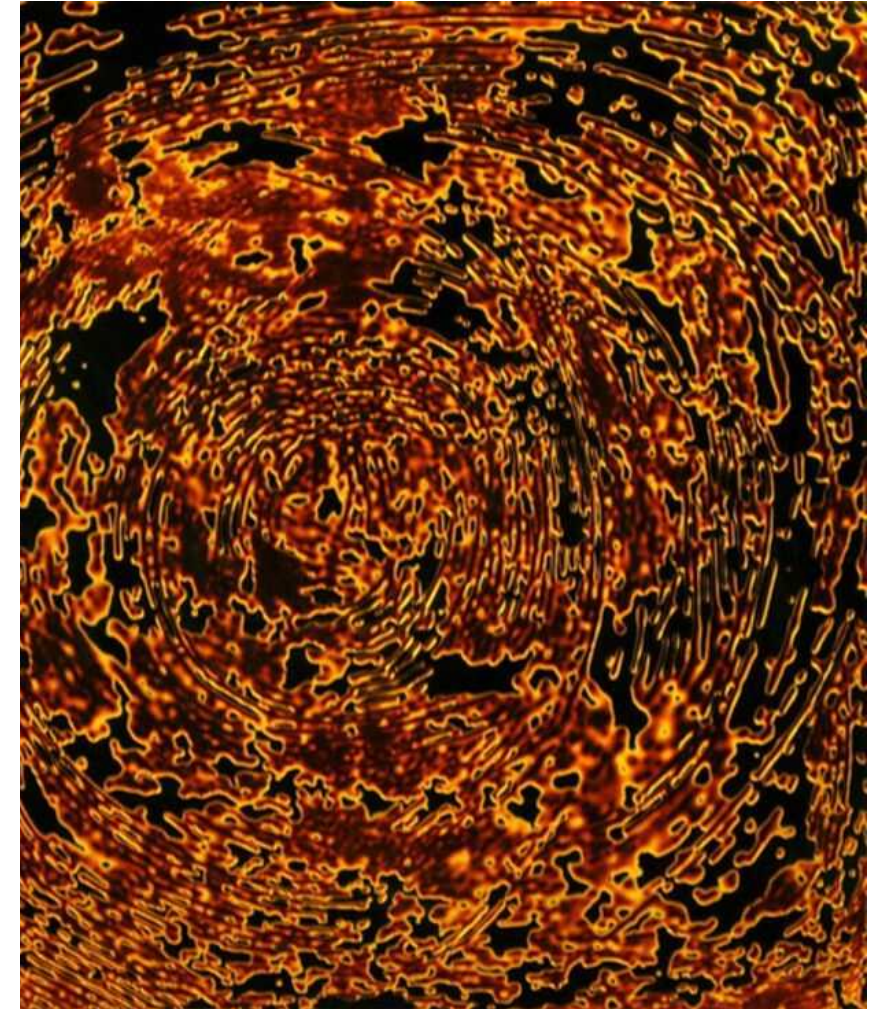
In THE CURATED, these stories converge. They are not commodities but covetable narratives — objects of knowledge disguised as design. Here, intelligence is not artificial. It is elemental.

Surfaces as Sentiment

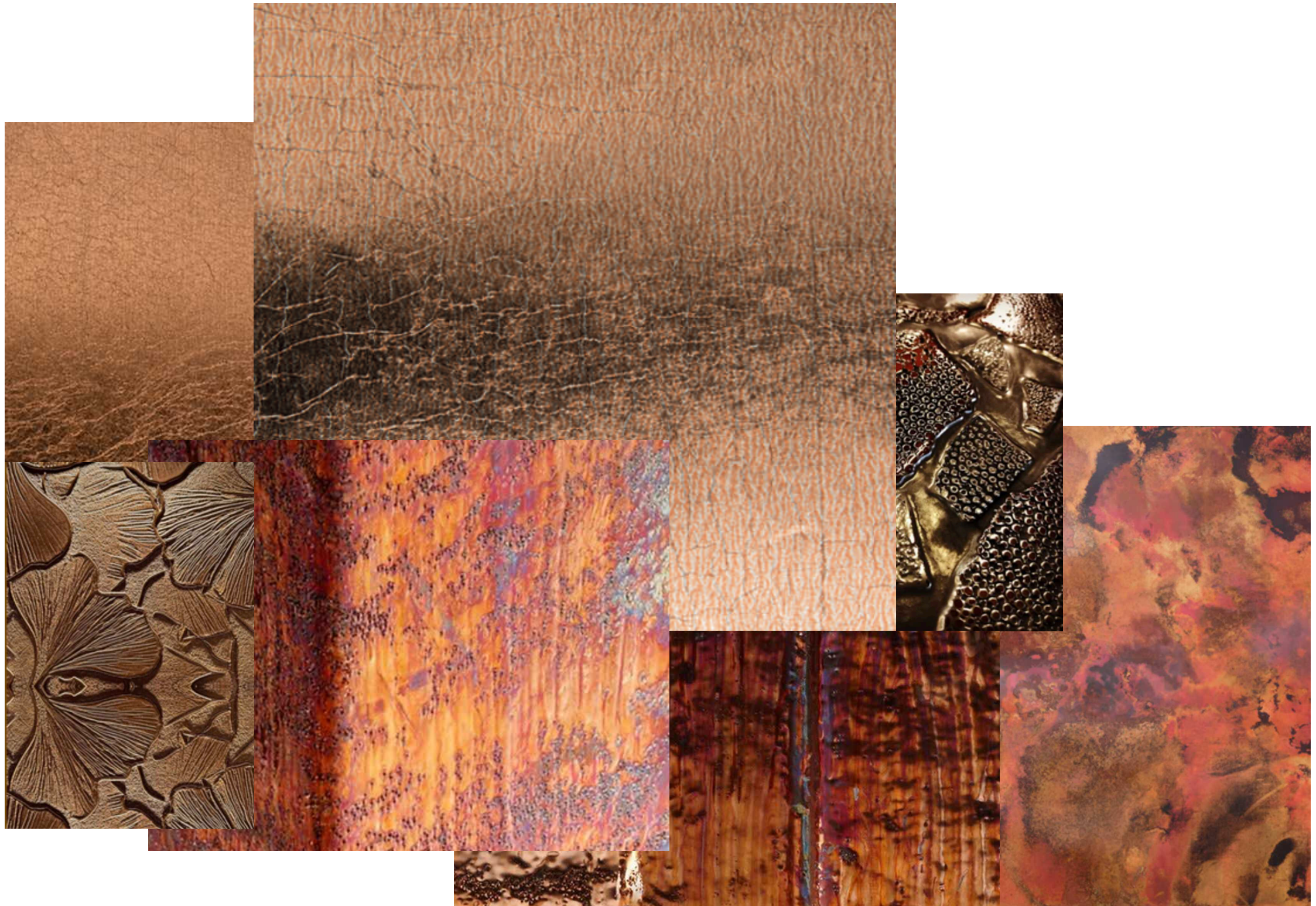
Tactility as a language of emotion

Surfaces as Sentiment is the recognition that every touch, every grain, and every shadow carries a resonance beyond utility, transforming walls into memory, textures into atmosphere, and tactility into a quiet language of emotion.





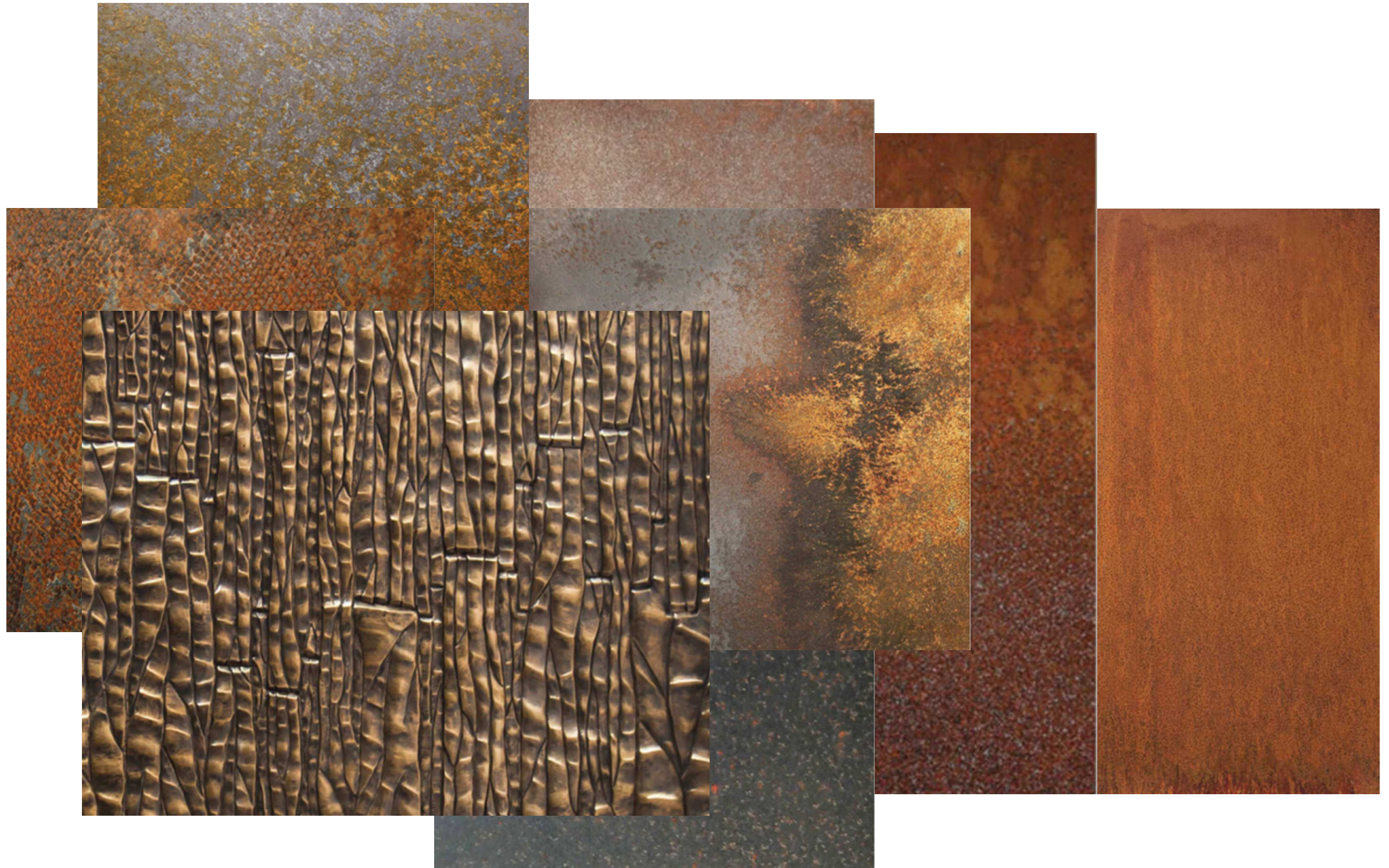
Every surface carries more than texture; it carries emotion. A sheen that recalls light at dusk, a grain that echoes time's slow passing, a color that holds the memory of touch.



To work with materials is to compose with sentiments — arranging not just finishes, but feelings. What is chosen is not neutral; it is charged, it speaks.



In THE CURATED, each surface becomes a fragment of sentiment, a resonance waiting to be placed. They are not lifeless planes but living echoes — design as the quietest yet most enduring form of expression.

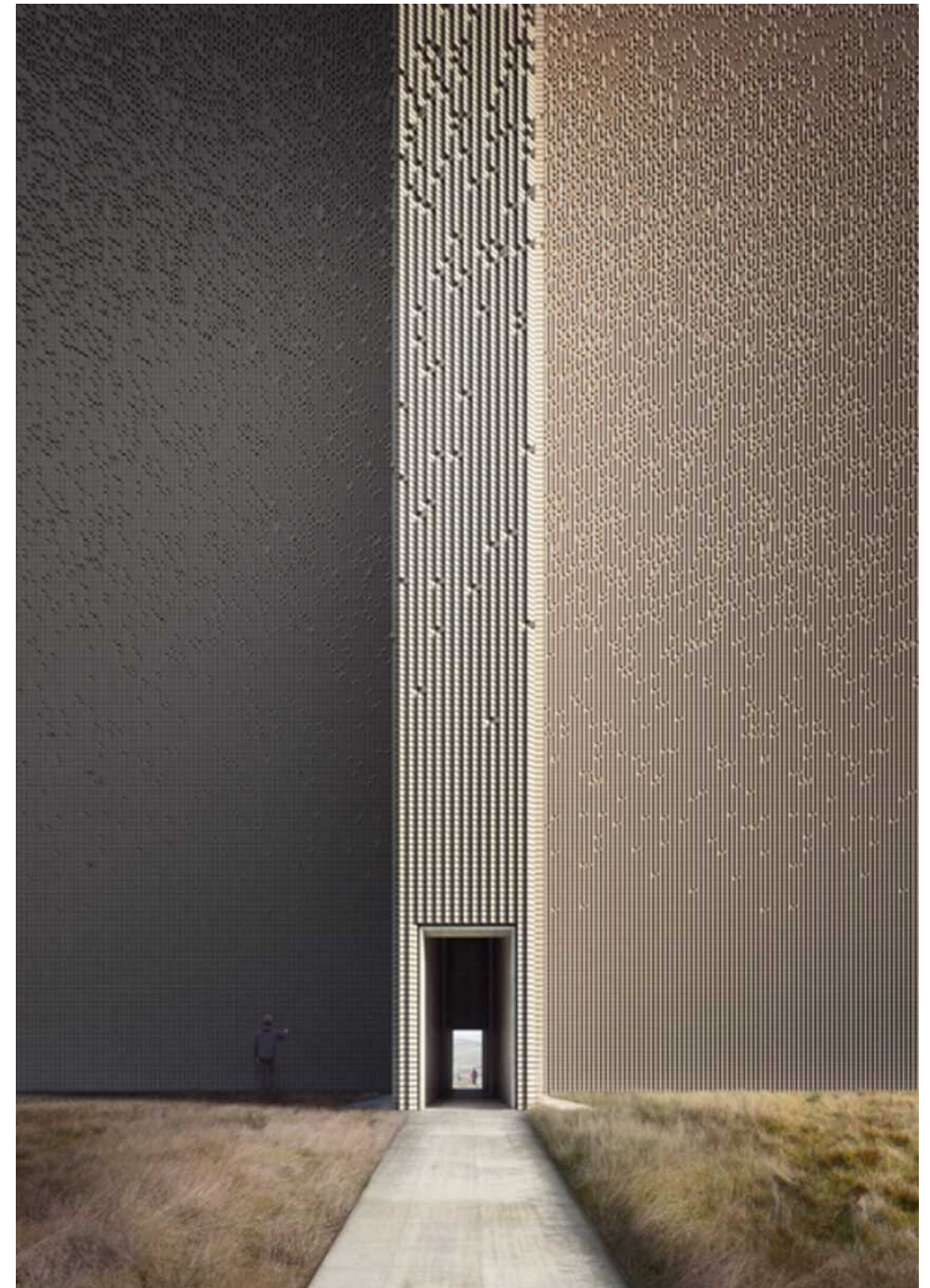


Every sentiment etched into a surface becomes architecture of memory — subtle, enduring, and deeply human.

Aligned with Order

Order is the hidden architecture within materials

Architecture lives not only in structures but in the quiet order materials bring — surfaces aligned in rhythm, textures set in balance, and layers resolved into a geometry where thought and touch become inseparable.





Order is the elegance of restraint

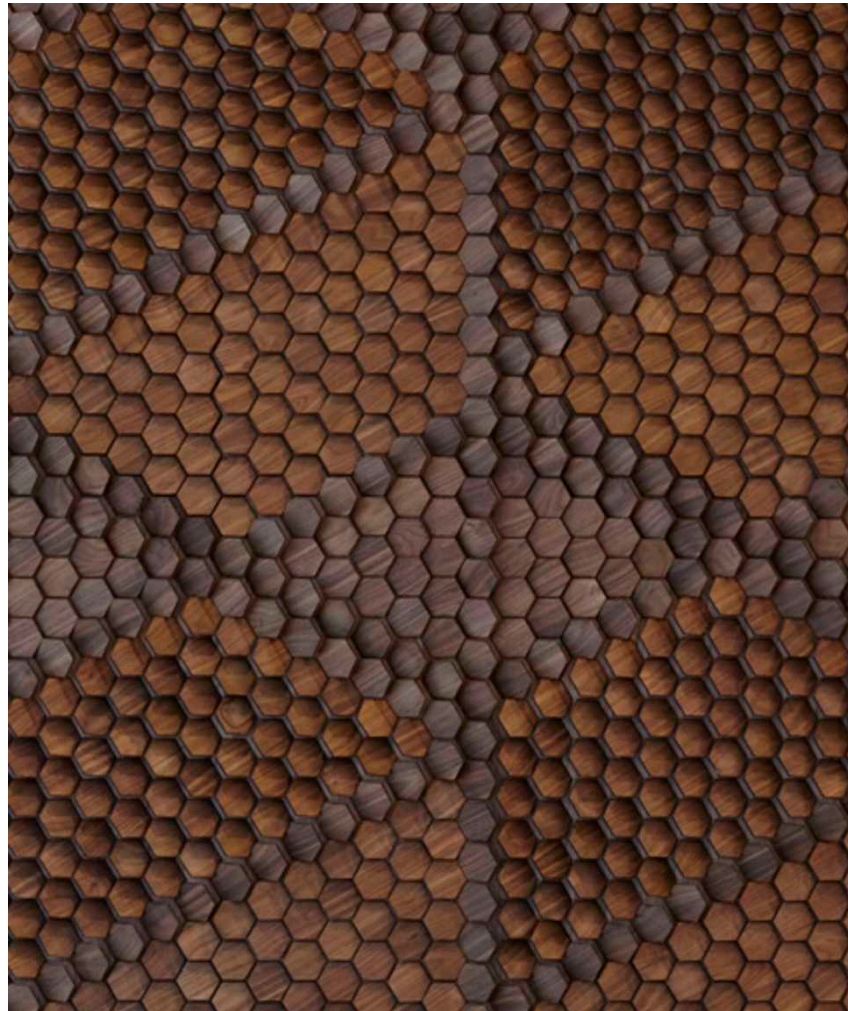
Lyndon Neri and Rossana Hu, founding partners of Neri&Hu and Design Republic Lyndon



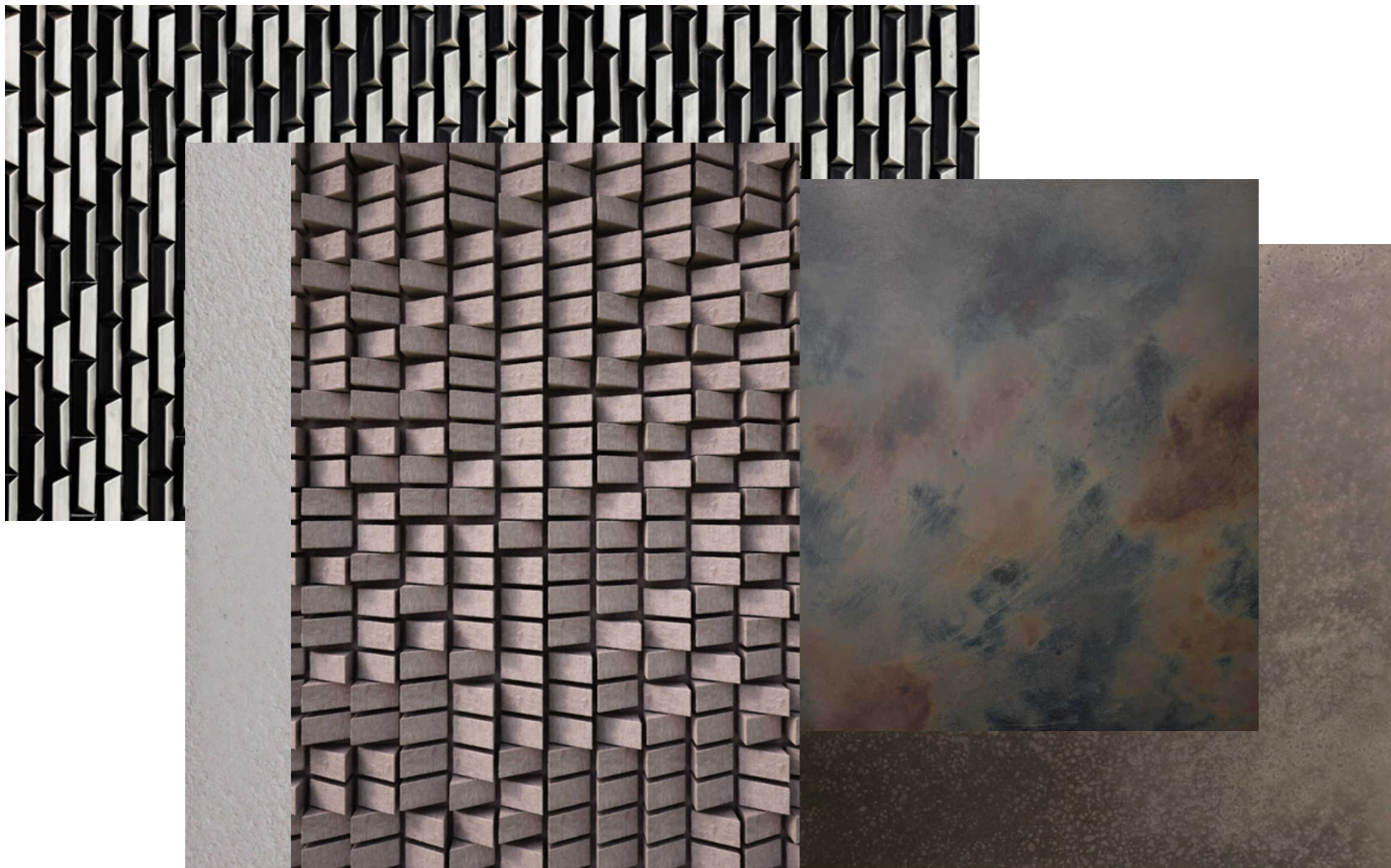
Architecture as layered narrative — weaving history, memory, and modernity into spaces both timeless and contemporary.



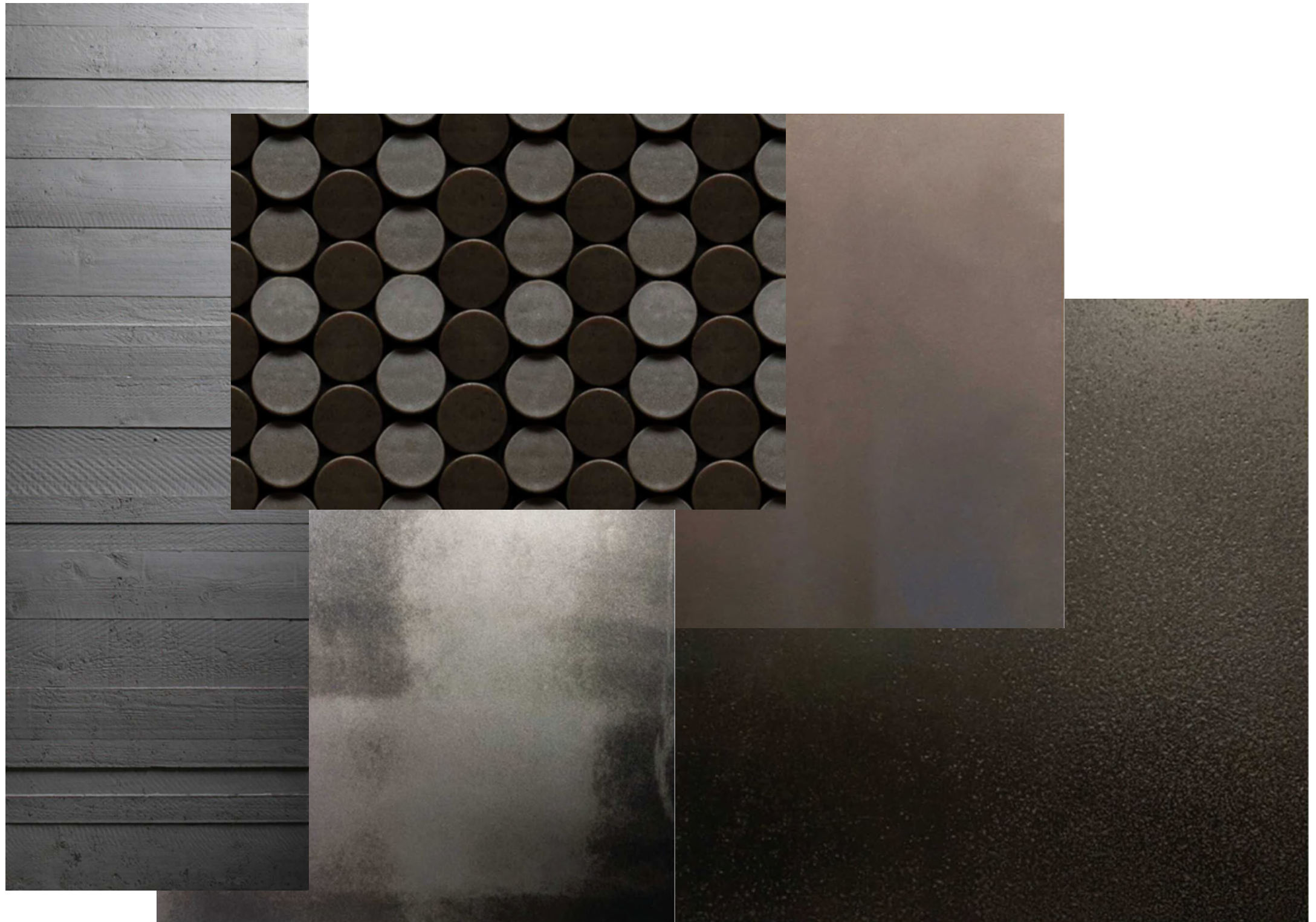
Surfaces are never neutral; they are carriers of emotion, memory, and resonance. The touch of a wall, the sheen of a stone, the quiet depth of a veneer — all extend beyond their functional role to become vessels of sentiment. They hold gestures of the maker, the patience of process, and the intimacy of use.



“In every material, I search for its architecture — not what it covers, but what it reveals: the discipline of order, the freedom of emotion.” — Khan



Aligned with order, these surfaces reveal not only the logic of architecture but also the cadence of feeling within it. They speak in whispers — the restraint of a line, the softness of a curve, the tension of a join. Sentiments become structured, arranged, and disciplined, yet they do not lose their humanity.



Each sentiment embedded in a surface offers continuity — between designer and dweller; between past and present, between intention and experience. In this alignment, material ceases to be mute; it becomes a language of order and emotion, a quiet but unshakable architecture of memory.

Architectural Resonance

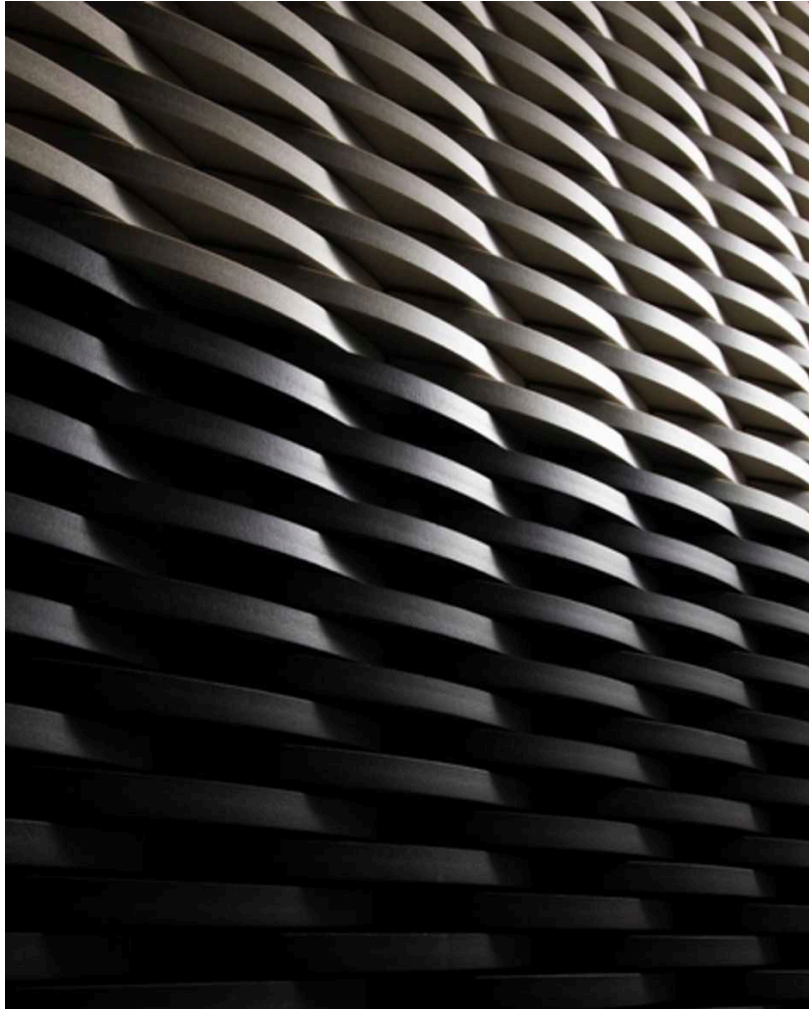
Where intelligence meets form

Architectural Resonance is the language of material architecture — the moment when stone, lacquer, textile, and metal cease to act as finishes and begin to breathe as form, where intelligence fuses with matter and design acquires a rhythm that speaks beyond its structure

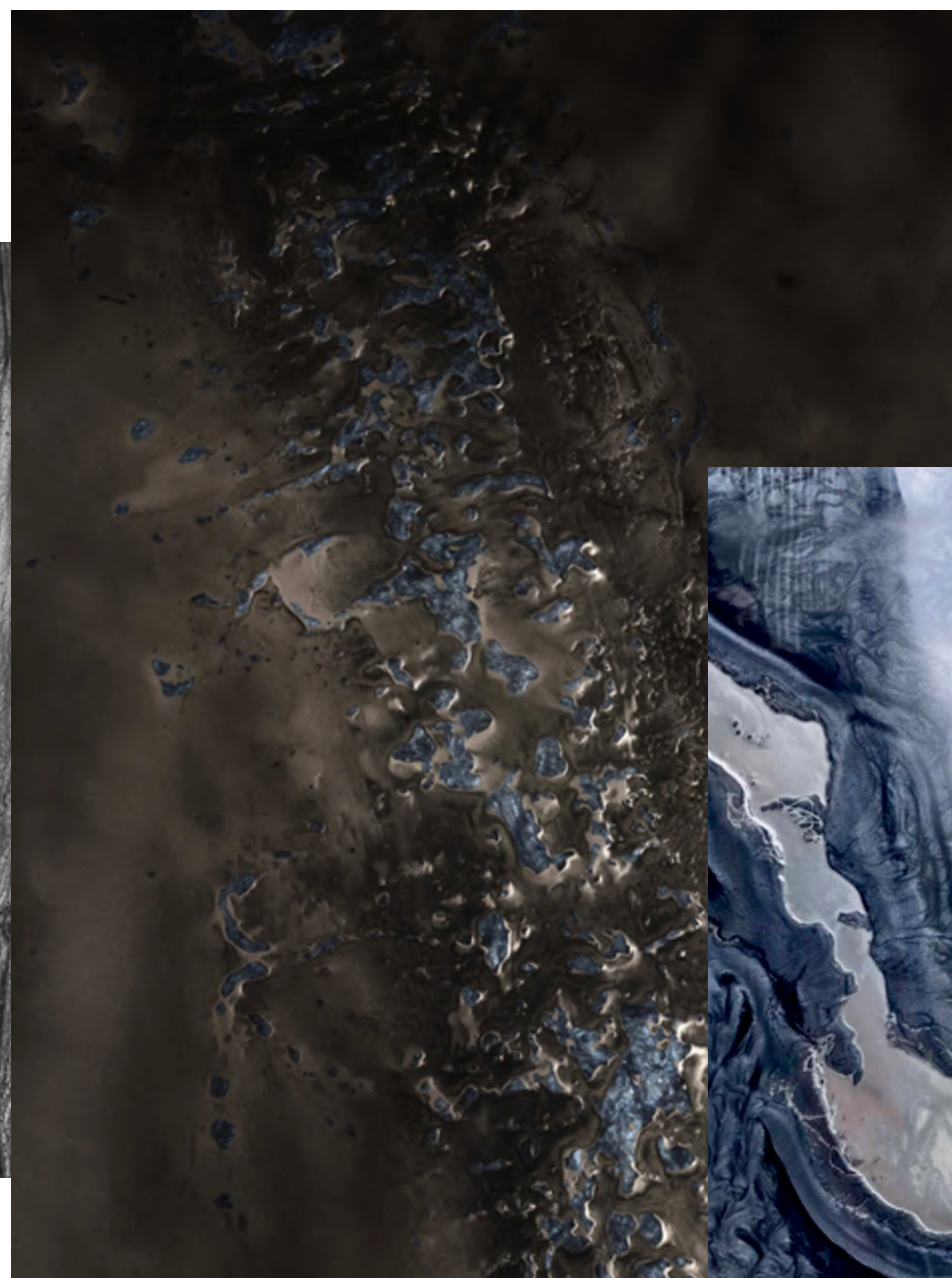




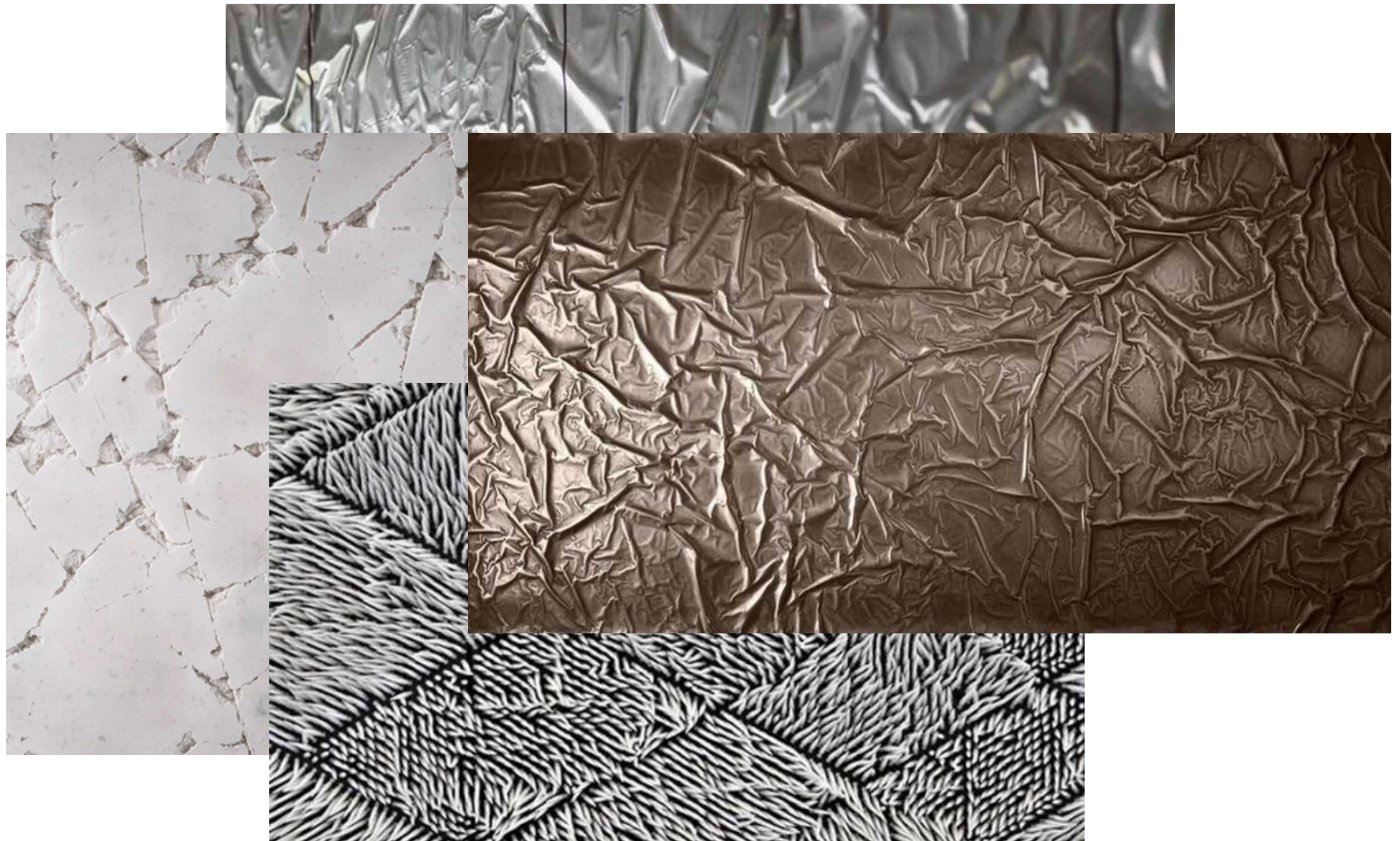
“In true architecture, materials are not chosen to cover space but to give it cadence — each surface a note, each proportion a measure, until the whole becomes a composition that resonates with presence.” — Khan



Resonance is the voice of material architecture.



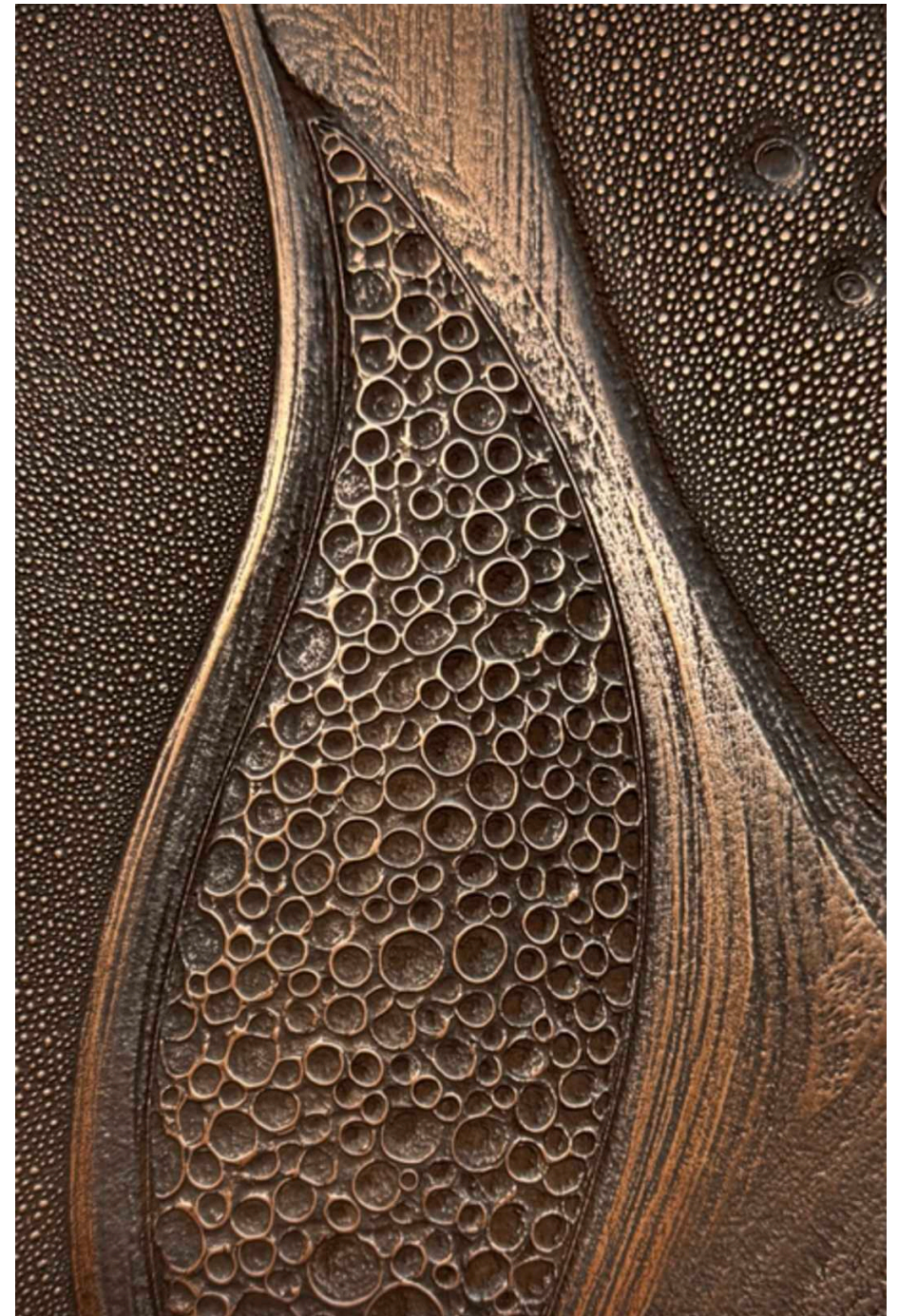
Khan: "Clay does not resist modernity; it completes it."



Architectural resonance is not loud; it is profound. It lingers in the silence of a corridor, the weight of a threshold, the patience of a façade. It lives in the balance between reason and feeling, where surfaces act as vessels of sentiment yet remain anchored in order.

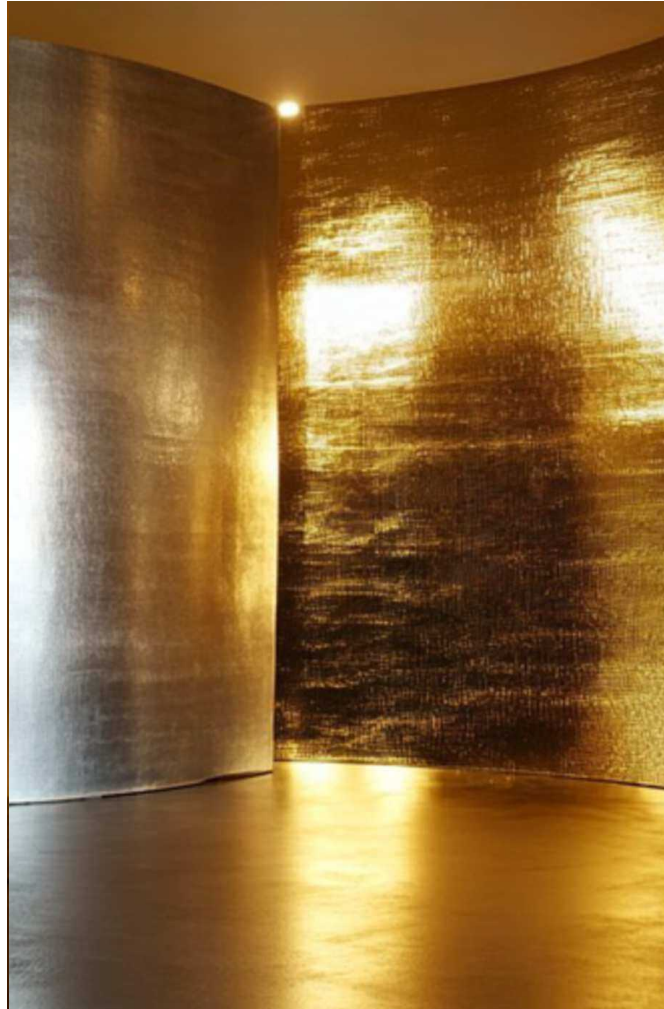
Emotional Permanence

Emotional Permanence is the highest form of material architecture — where surfaces are not remembered for their appearance but for the atmospheres they create, where intelligence transforms into memory, and where design endures not in its physical survival but in the resonance it leaves within those who inhabit it.

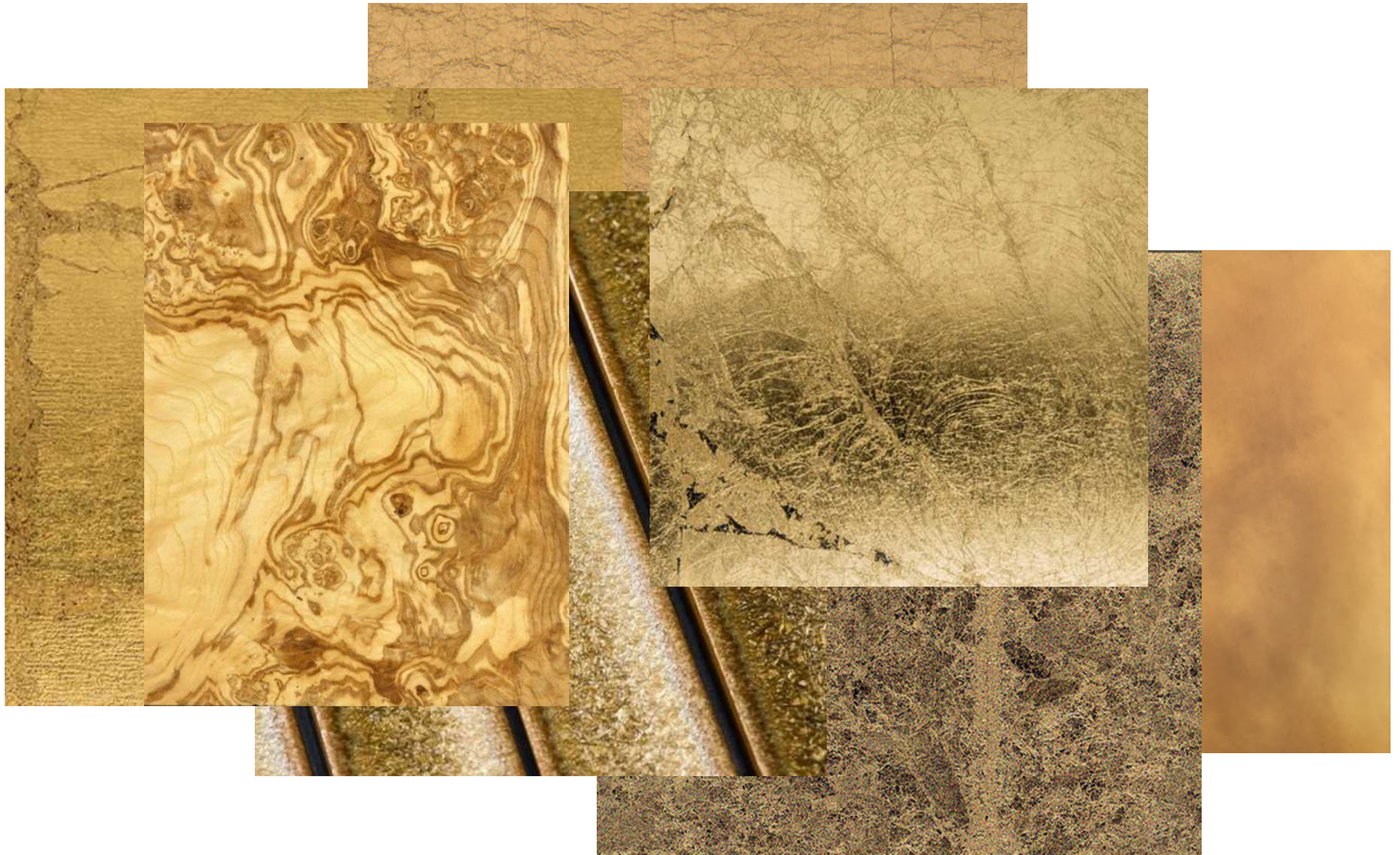




Material intelligence is not only about performance, it is about permanence. A surface that carries emotion does not fade with use; it deepens. When design is aligned with memory, a material becomes more than a choice — it becomes a companion to time.



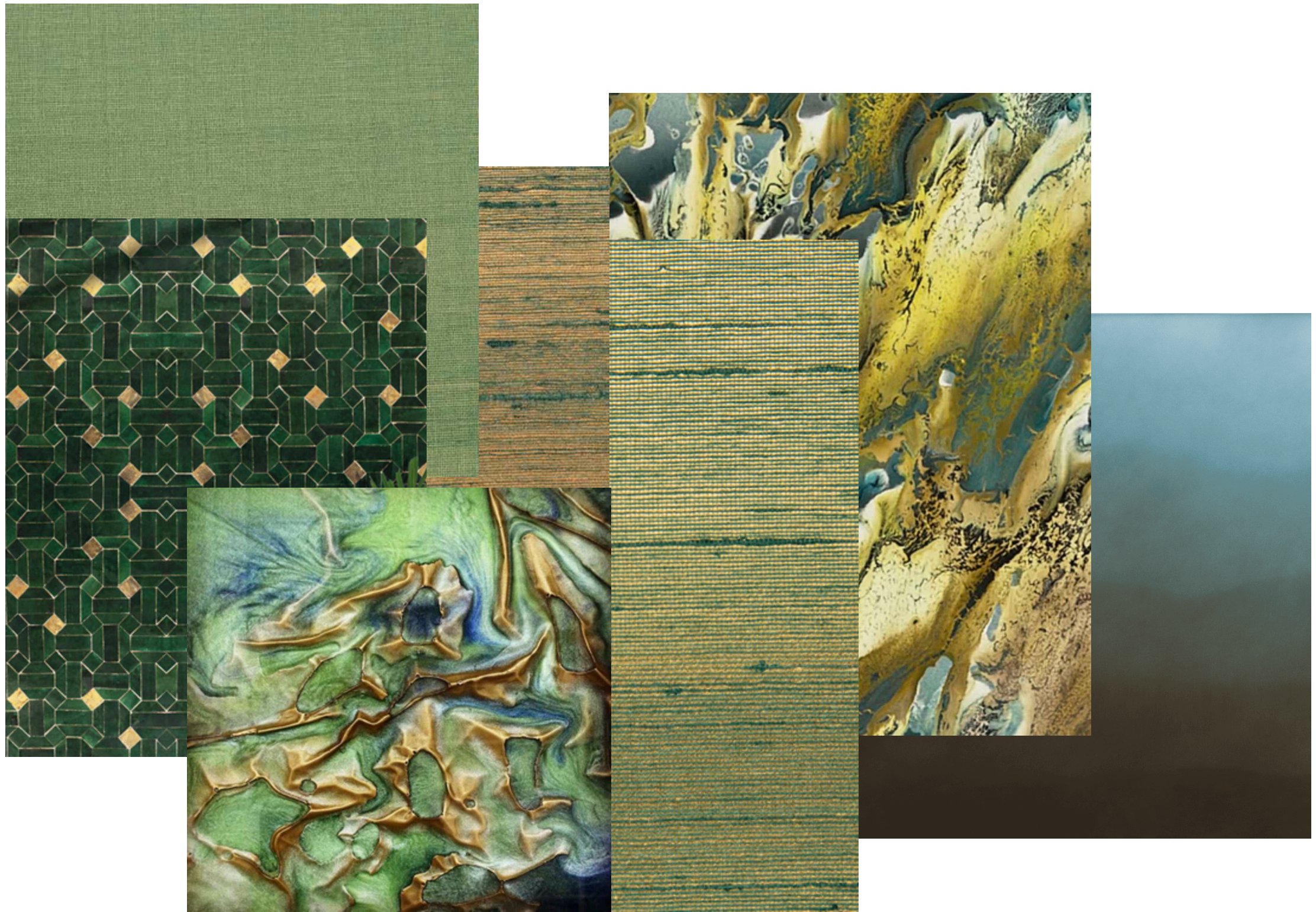
Permanence is the echo of material architecture



Emotional permanence means creating with awareness that beauty is not temporary. It lies in the grain that ages, the finish that absorbs touch, the form that endures meaning. Intelligence in material is revealed when it can hold both strength and sentiment, order and memory.



“What lasts in architecture is not the wall or the finish, but the silence it holds, the emotion it releases, and the memory it imprints long after its materials have aged.” — Khan



A surface is never still — it carries memory, it deepens with time, it holds us.

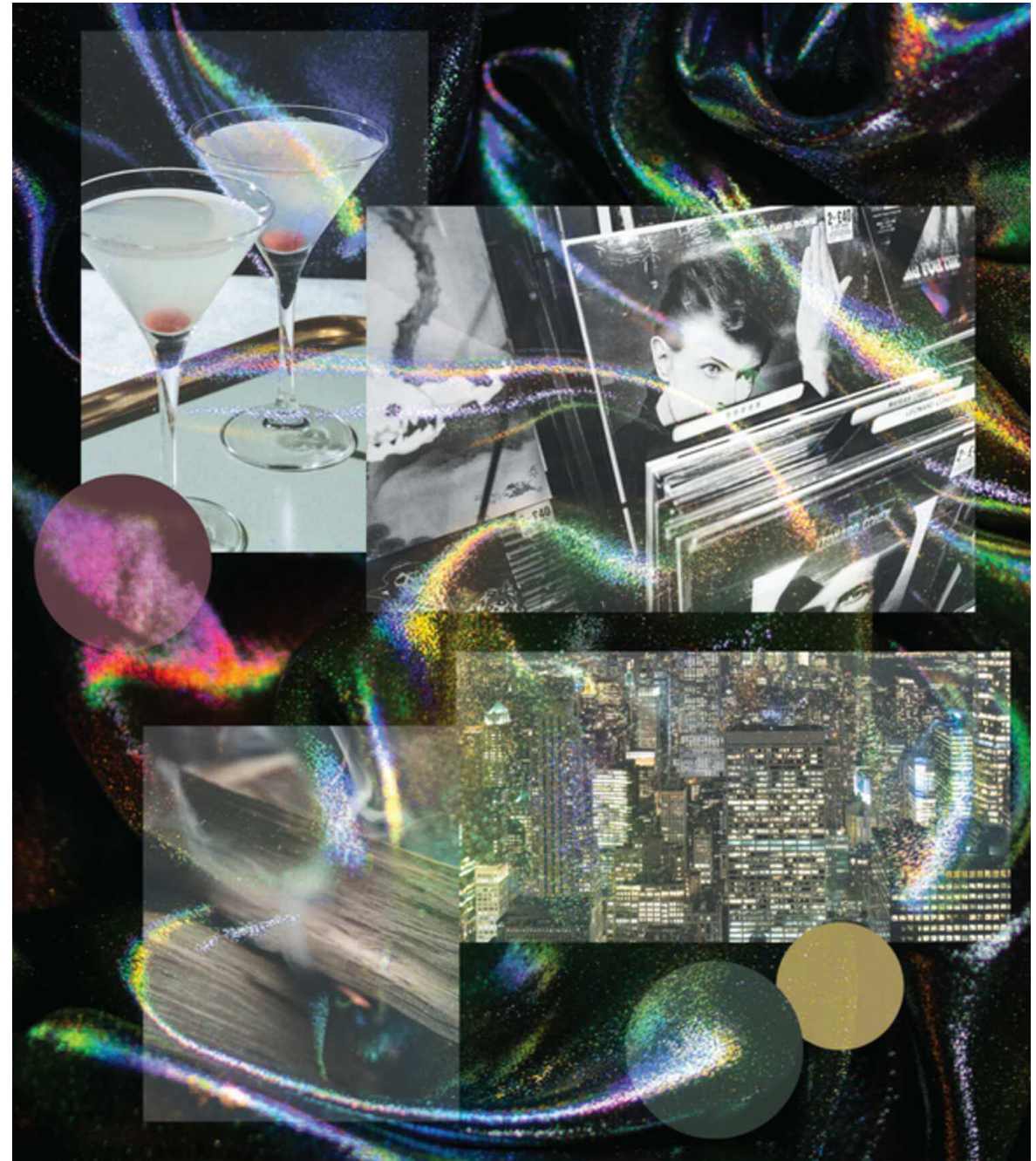


Design that lingers beyond time

STORY One

Medieval Europe Meets Glam Rock

Le Disque reimagines glass as both timeless and rebellious — beautiful yet durable, steeped in craft yet alive with glamour. Inspired by David Bowie's glam rock and the psychedelia of the 1970s, it revives glass tile as an expressive surface beyond its 1980s–90s clichés.



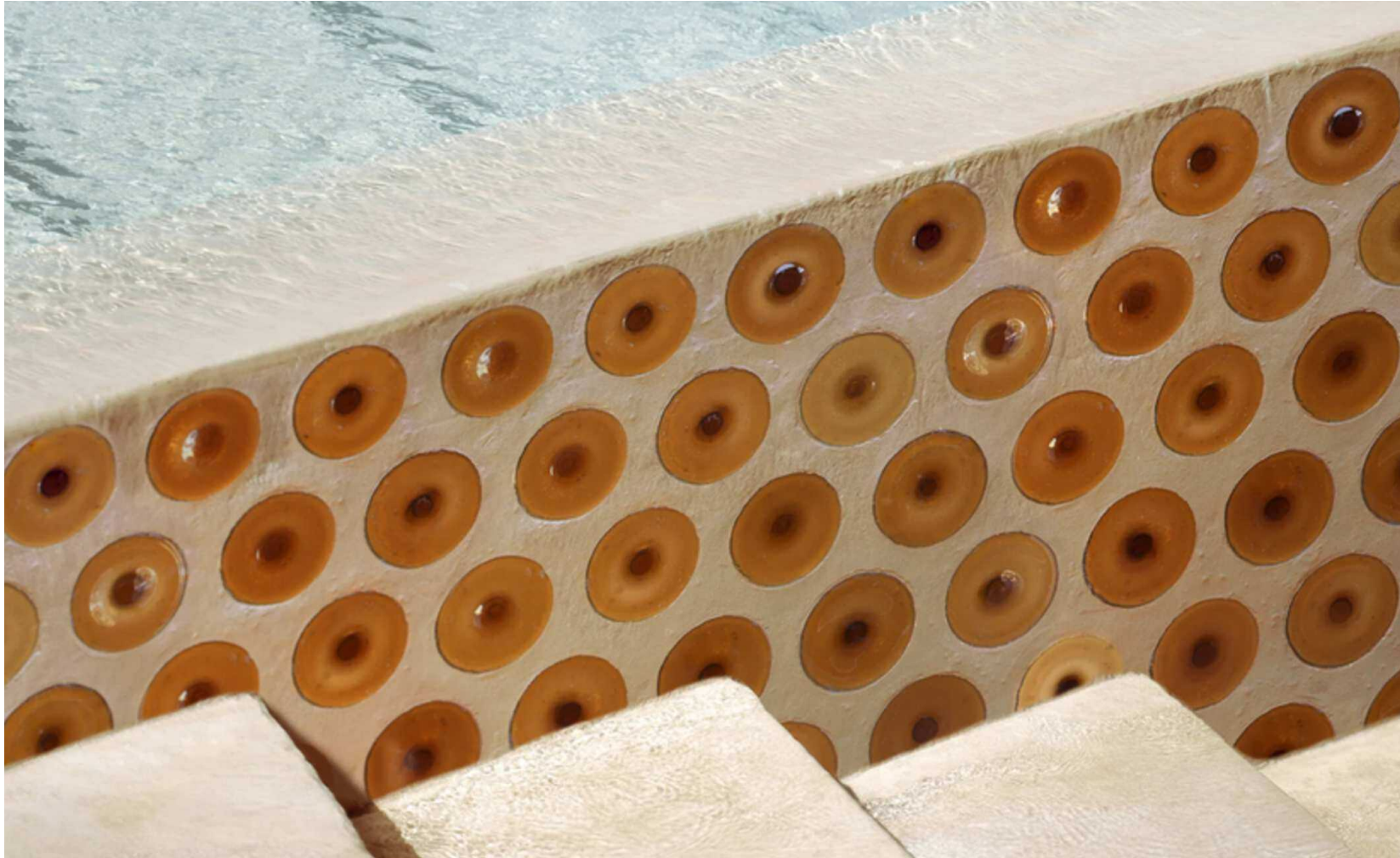
Artistic, industrial and glamorous.



At its core is glassmaking as an art form: a lineage stretching back to crown glass techniques of 14th-century Europe, themselves rooted in Syrian origins. Once central to medieval homes and later to New York's 19th-century interiors, this material now returns with a new cadence — at once medieval and Studio 54, historic and futuristic.



What began as an exploration of clear, white, and black glass has grown into an opulent collection of rondels in considered colors. Decadent shades take their cues from 70s fashion, culture and art, courtesy of maximalist colors with a hint of disco glitz. (Very Debbie Harry.) The muted jewel tones span the spectrum from warm Amaretto (medium brown) and Izarra (olive green) to moody Chamboard (light purple), Freddie (green-black), and Velvet (dark purple).



The magnetism and decadence of glam rock, with a heavy nod to disco.

STORY Two

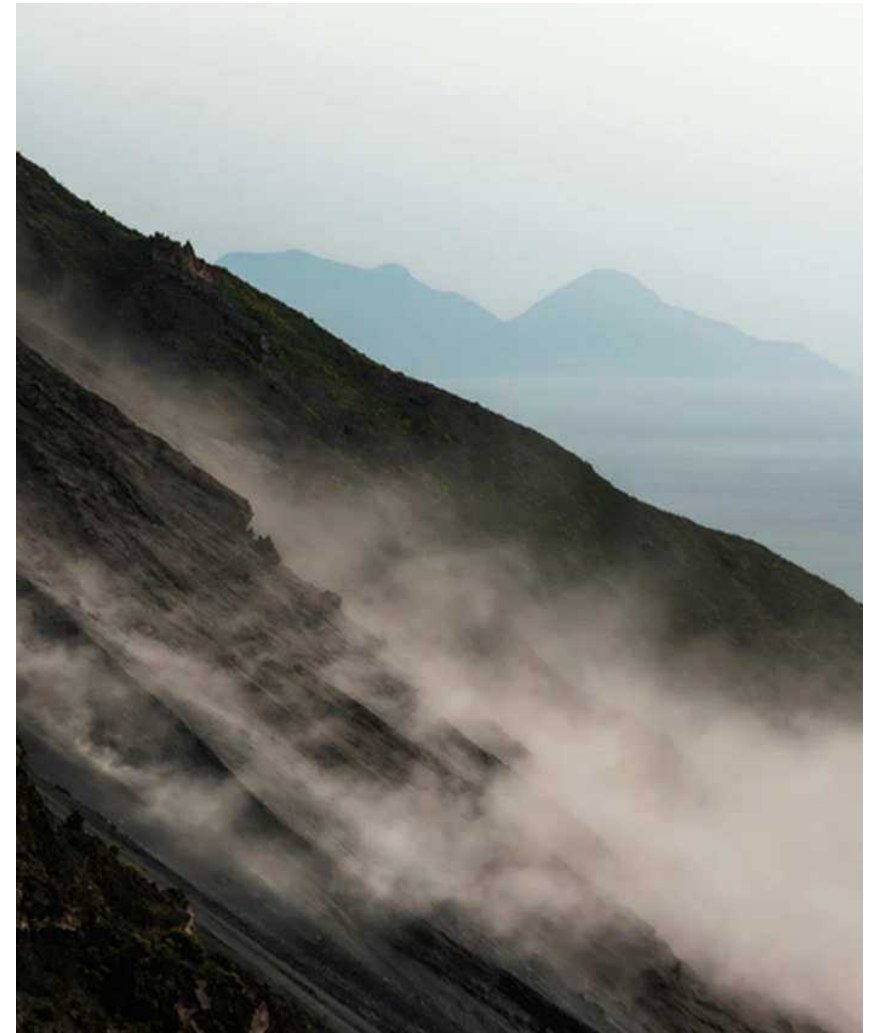
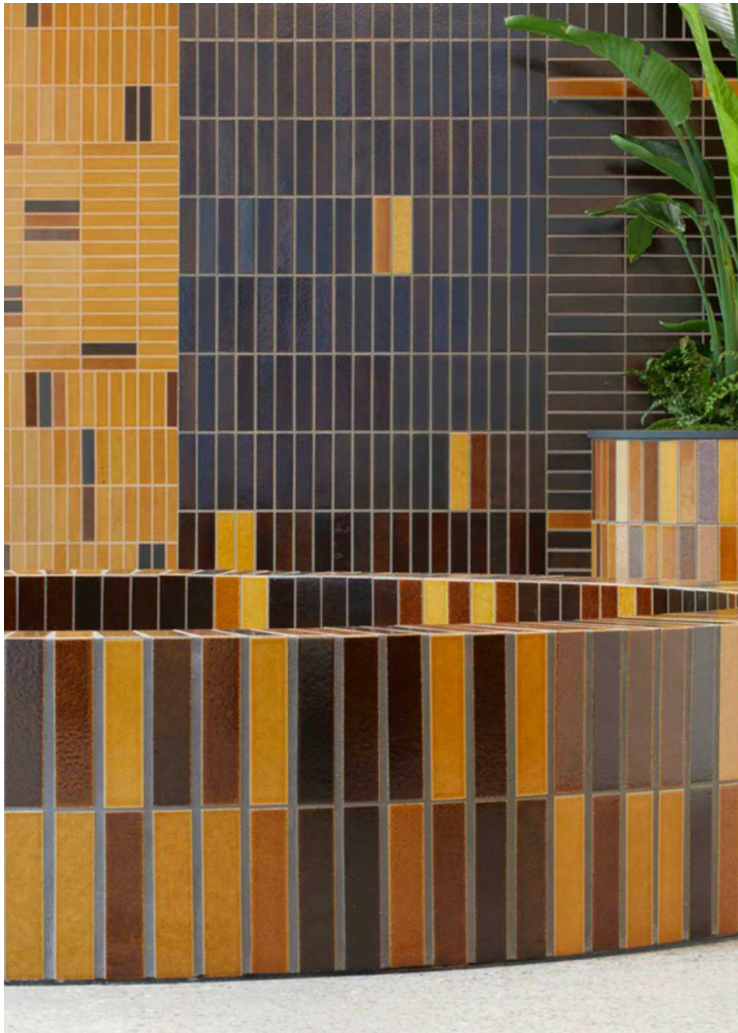
Design for a better World

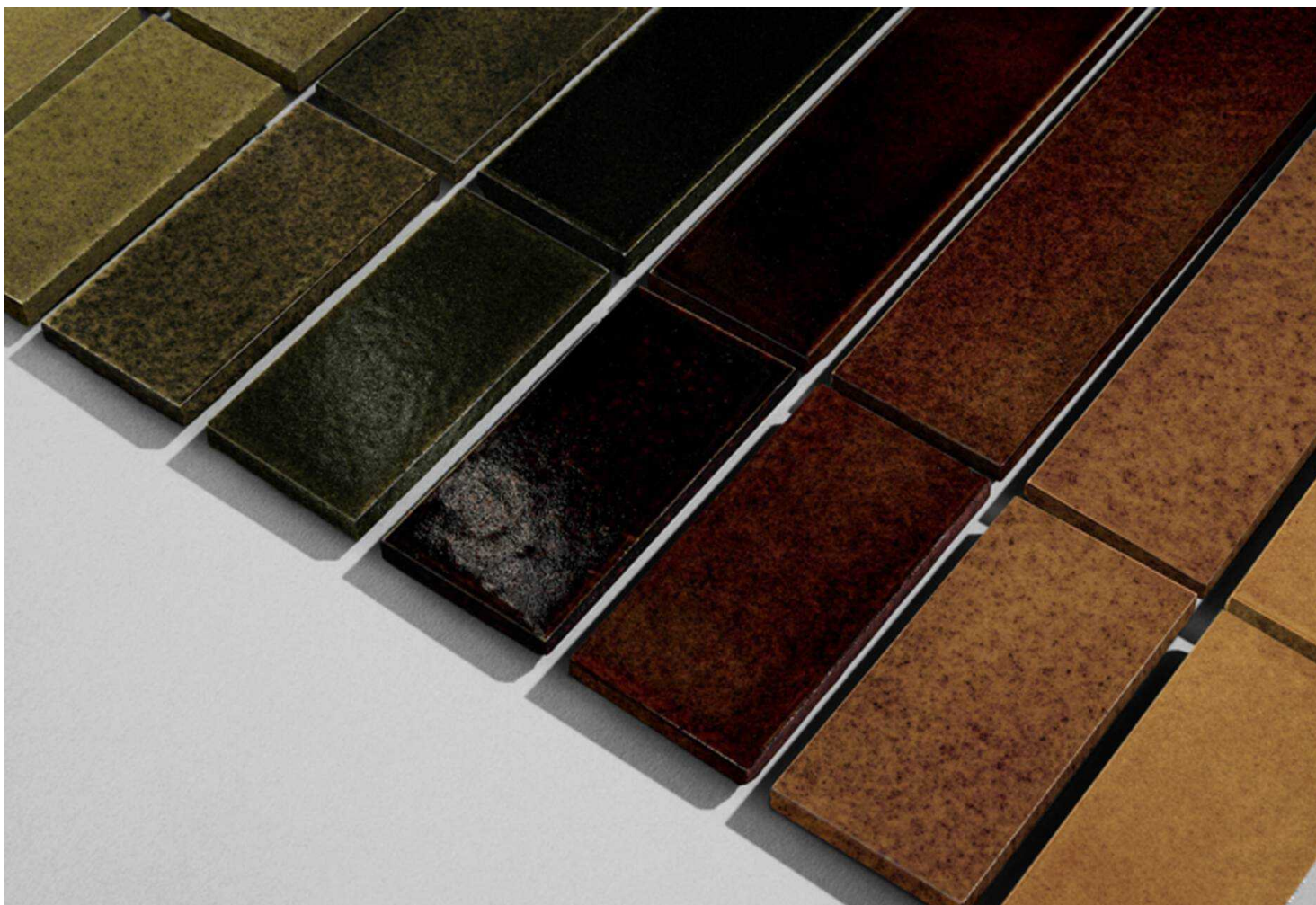
Widely regarded as one of the most inventive and influential design studios of contemporary times, it was founded in Amsterdam in 2009 by Italian designers Andrea Trimarchi and Simone Farresin.

Since then, the research-based workshop has consistently pushed the boundaries of design, exploring the intersection of craft, technology, sustainability, and cultural discourse.

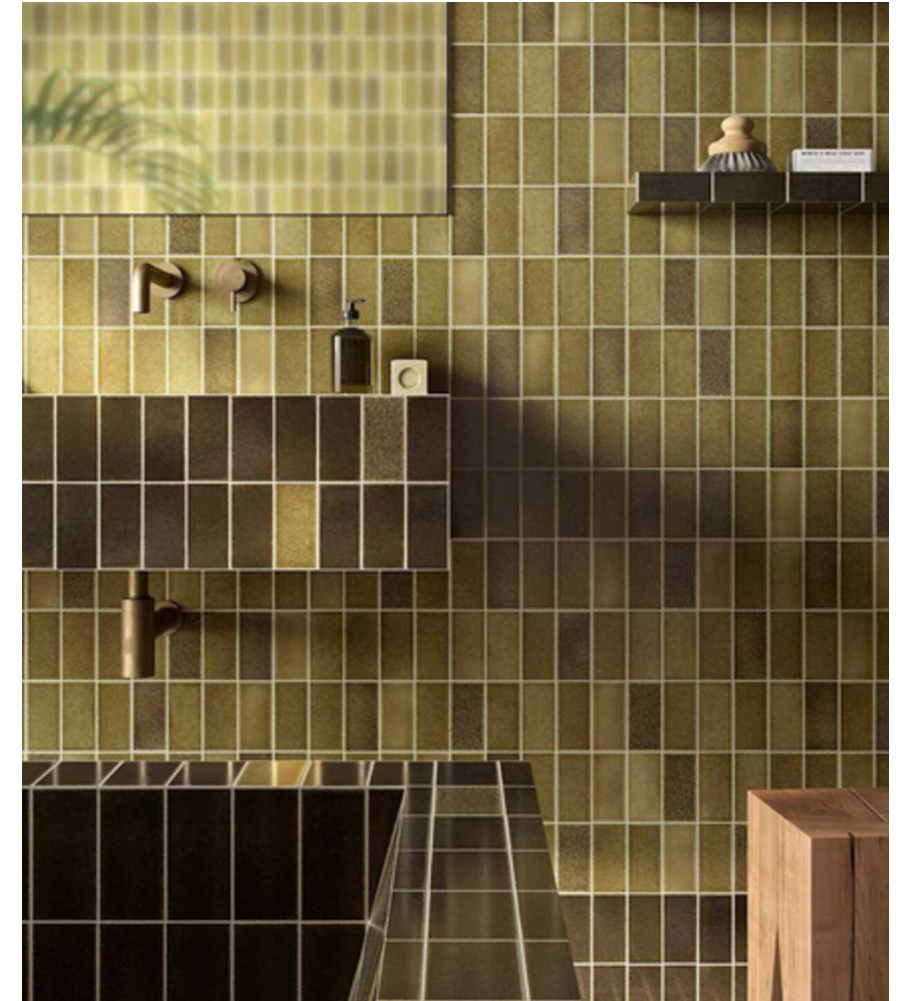
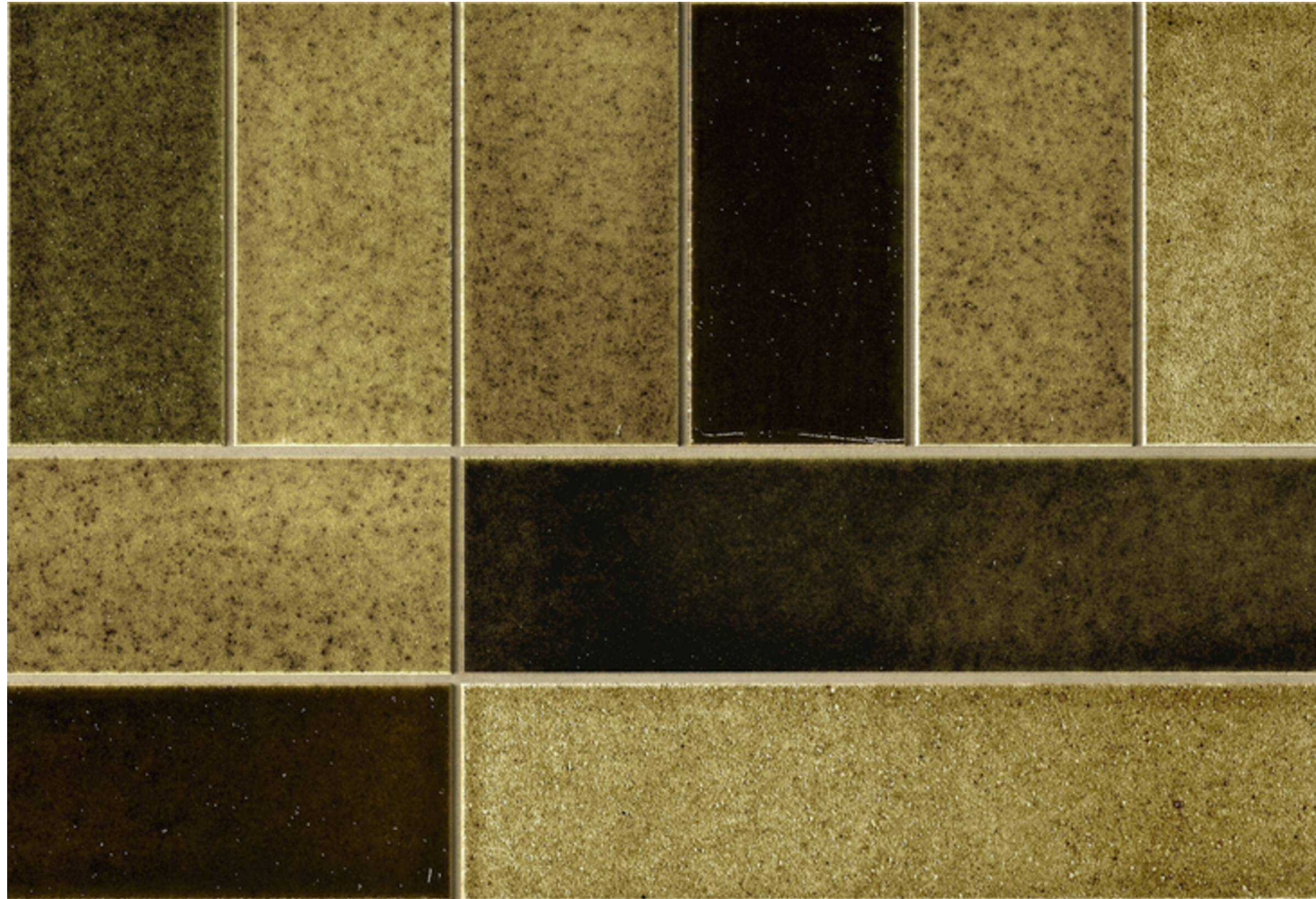


Artistic, industrial and glamorous.









Using ash in ceramic glazes is not new, particularly in more art-based ceramics. But volcanic ash possesses metallic oxides that make it highly unpredictable when firing, making them far more challenging to produce repeatedly with any level of consistency.

STORY Three

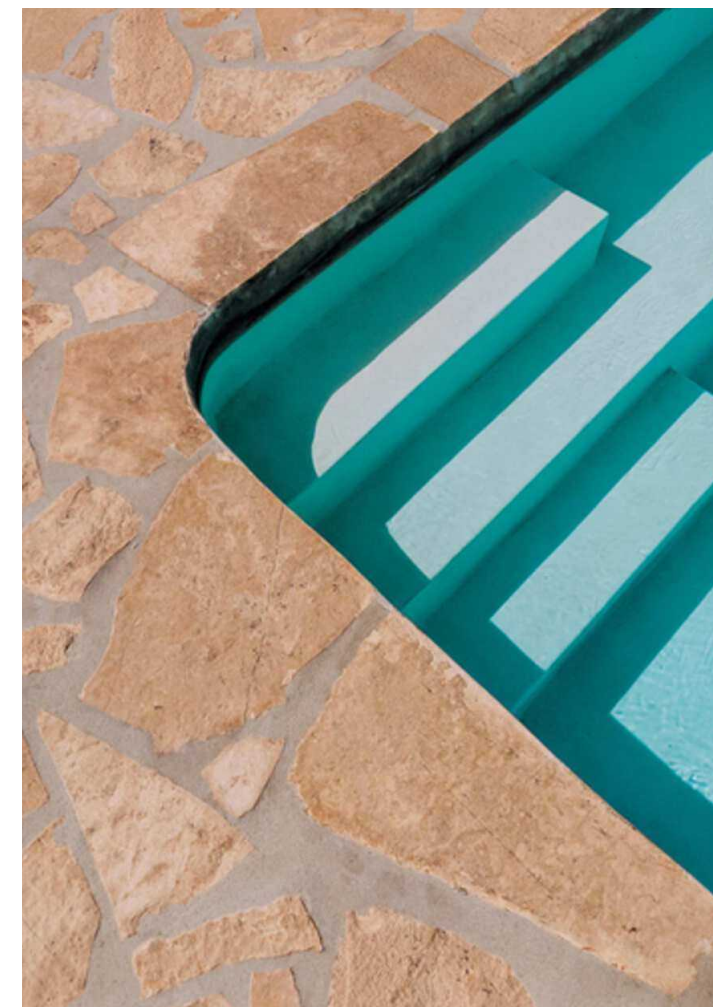
Grangestone: Quiet Luxury

Grangestone is our love letter to flagstone — especially slate, the most timeless of outdoor materials. It combines no-nonsense rusticity with primal elemental power to create luxurious and versatile spaces.





A plethora of options adds to Grangestone's versatility. From large, lighter-colored stones to smaller slate offerings that bring sophistication to gardens and landscapes, there are countless ways to add flagstone indoors and out.



Slate and its close relatives are steeped in history and authenticity, giving them a unique ability to elevate minimal exteriors (and interiors). They soften the starkness of modernism and the formality of stately landscapes. And they accentuate organic architectural spaces, whether those are inspired by the mountains, desert, or ocean.

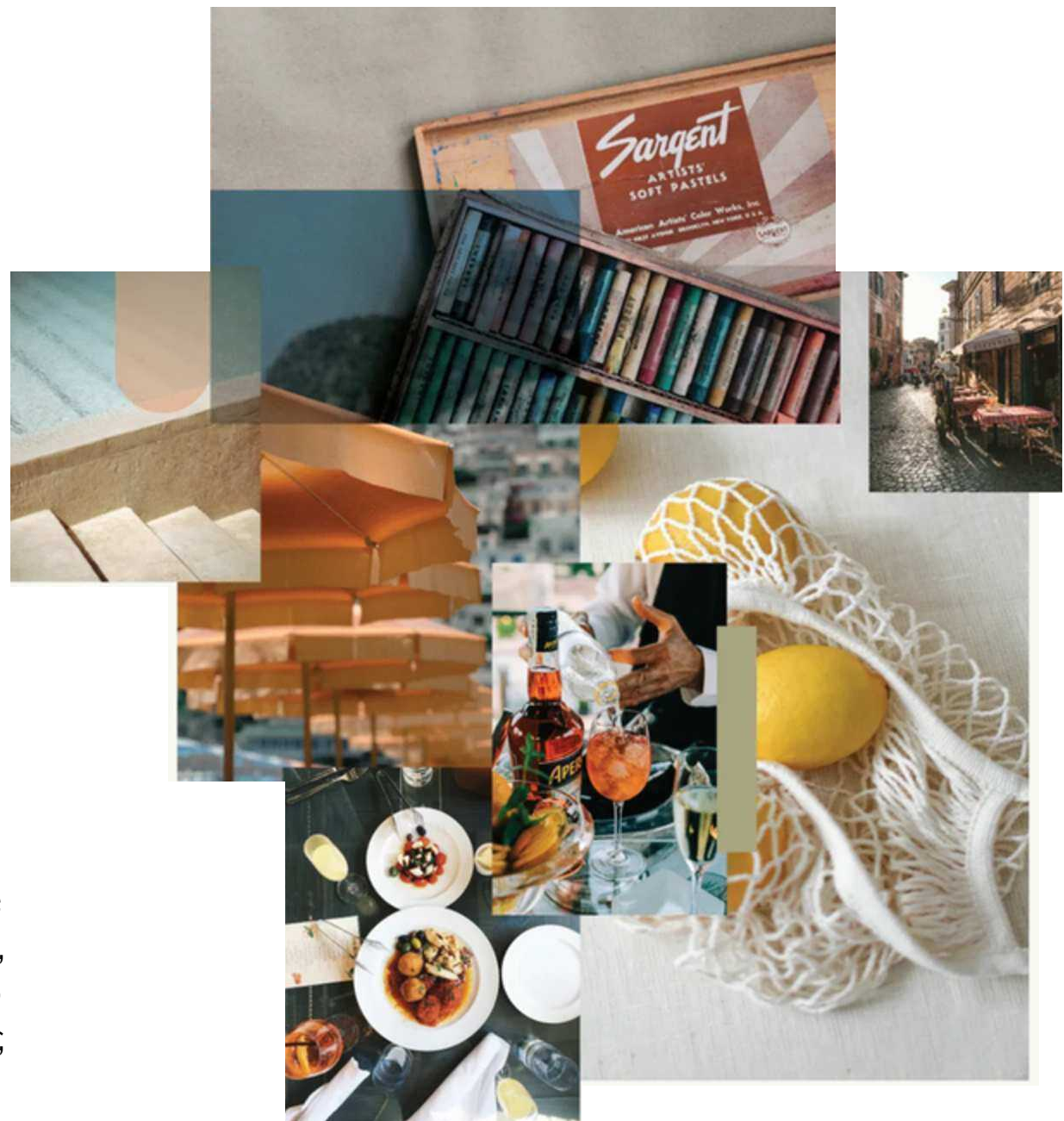


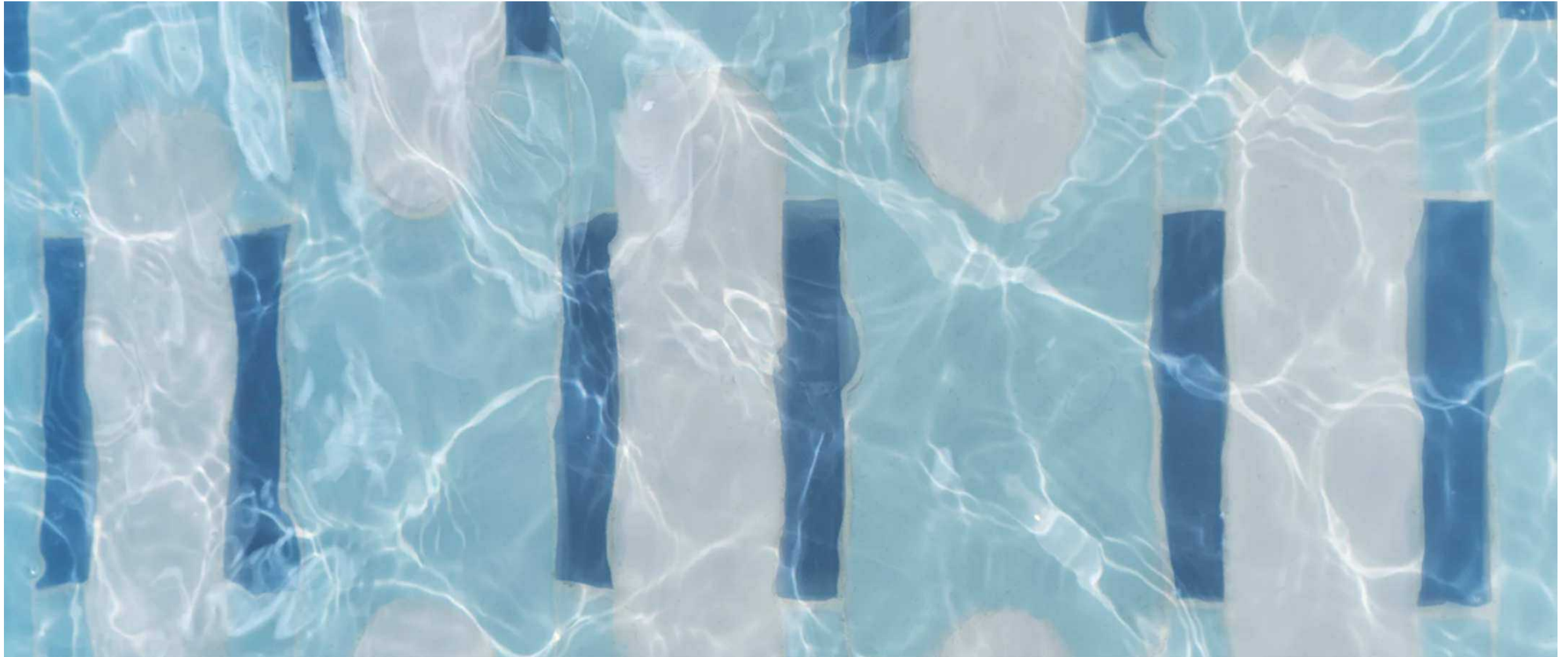
Yet one more reason slate other types of flagstone have made their mark over the centuries: they have boundless indoor-outdoor potential, allowing for the elusive continuous material palette.

STORY Four

Bringing Milan Sophistication Outdoors: Tivoli Tech

Celestino is known for the way she delves into the richness of Italy's historical legacy of art and design, teasing out stories, motifs, and themes, bringing them to life in multiple forms with freshness, a knowing humor, and a modern edge.





Made from through-body technical clays by one of Italy's highest-quality family-run factories, Tivoli Tech is durable and low-maintenance, with the requisite resilience for the outdoor walls, floors — even pools, waterlines, fountains.



Slate and its close relatives are steeped in history and authenticity, giving them a unique ability to elevate minimal exteriors (and interiors). They soften the starkness of modernism and the formality of stately landscapes. And they accentuate organic architectural spaces, whether those are inspired by the mountains, desert, or ocean.

What began as fragments of thought and form now returns as a continuum — a vision where intelligence is not measured in data but in the conscience of creation, and emotion is not a response but an architecture of belonging.

“When we close a book, we do not end its story; we carry it within us — as an unfinished architecture, waiting to be built in the world.” — Khan

ARCHITECTS DON'T NEED PRODUCTS. THEY NEED INTELLIGENCE

CUROQ works upstream with architects:

- 48-hour curated responses
- Co-design mood board support
- Bespoke editions of THE CURATED for studio libraries
- Exclusive access to rare and collectible materials



We speak your language — before the project begins.



OUR OFFERING

What Makes Curoq Different

1. Curated Palettes

Beautiful, Buildable, Buyable

Each CUROQ palette is a pre-matched composition of 3–4 materials — designed by mood, function, and spatial flow. These are not catalogues. These are readymade material poems, ready for your project.

2. Custom Material Sourcing

You Design. We Find.

You send the project mood. We build a palette just for it — across textures, tones, surfaces, and objects. From natural plasters to statement basins, we source globally with ethics and taste.

3. Limited Edition Objects

Form with Soul

CUROQ offers limited pieces — vessels, basins, stools, sculptures — from artists and makers around the world. All pre-order only, no mass production, no replicas.

4. Collaboration with Studios

We Join Your Process, Not Compete with It

Curoq plugs into your project team as a material and mood partner — not a vendor. We respect your process, your clients, and your budget. Curation is offered, not pushed.

5. No Inventory. No Waste. No Pressure.

This Is Slow Design

We carry no warehouse stock, use no interest-based operations, and quote only what's needed. The material is ordered per project — nothing extra, nothing wasted

A fluent design dialogue across time zones and traditions



OUR GLOBAL-LOCAL NETWORK

CUROQ connects global avant-garde with regional resonance.

FOR DEEPER INSPIRATION

Beyond the Palette: CUROQ Look Books

TEXTURED SILENCE

A study in stillness, mass, and shadow.
Where stone speaks, and space listens.
For lovers of minimalism, sculptural scale, and quiet power.





SCALES OF GREY

An architectural essay in tone, texture, and timelessness.
Five chapters of grey, from pale to graphite — curated to evoke memory and restraint.

CADENCE (Coming Soon)

Rhythmic material pairings across wall, object, and space.
For design thinkers who move with intention.

WELLNESS BY CUROQ

Water, lime, and elemental grace.
Vanities, basins, accessories, and spaces that soothe and restore.

ARTISAGE (Coming Soon)

Limited edition objects and materials by the rarest hands.
Collected, not produced. Timeless, not trendy

Material Intelligence: A Note from the Curator

What I have curated here is not about luxury as price, but about luxury as presence.
You'll find finishes that feel ancestral, yet forward.
Compositions that are not overly themed, yet deeply intentional.
Surfaces that can transform the emotional rhythm of a room.
I believe every wall deserves authorship. Not just treatment.

This is for architects, interior designers, and visionaries who work not with finishes — but with feeling.

Welcome to THE CURATED.
Let the wall speak.

— Abdul Hameed Khan
Founder, CUROQ
Material Intelligence / Designed Emotion



Where material speaks, and curation defines architecture.
Engage with Curoq to access rigorously selected surface and material solutions—
curated for architects who seek authenticity, depth, and precision in design.

CUROQ