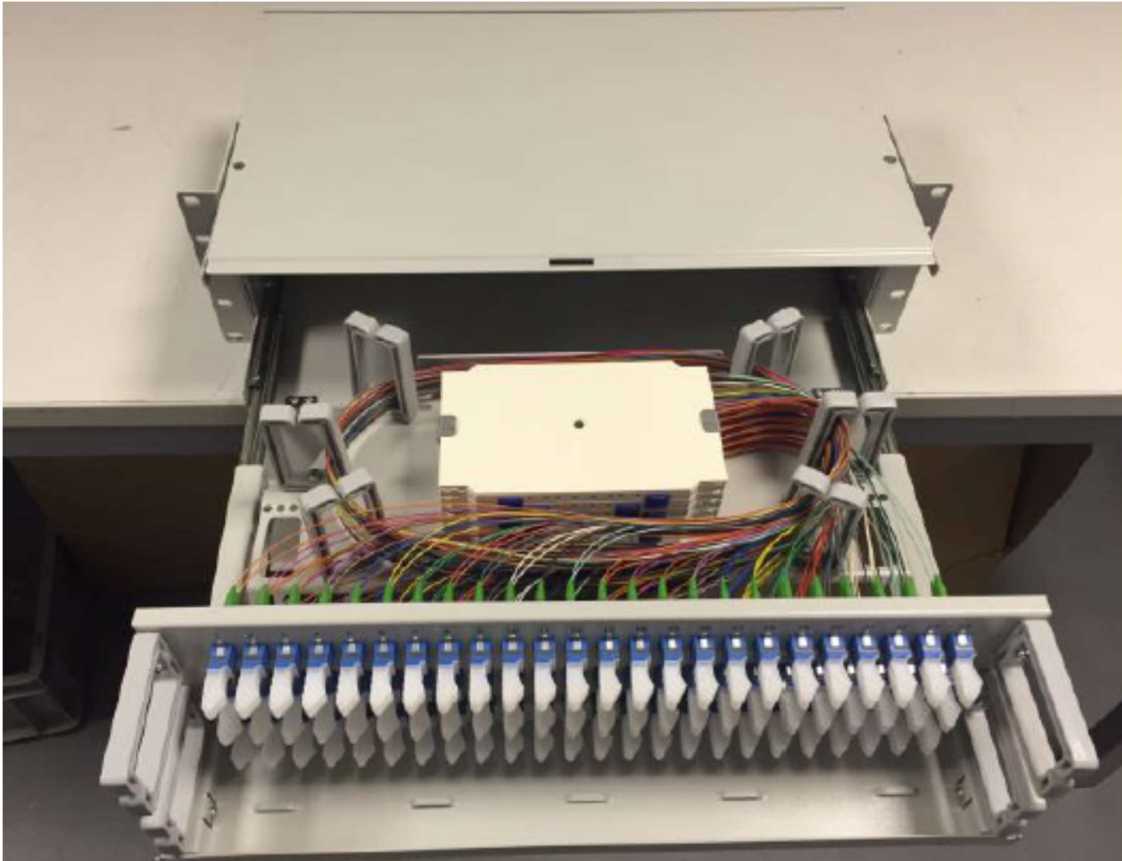


FORTE

Optical Distribution Frame (ODF)



ODF -192- 5U 19" SC/PC or APC G657.A2 – Drawer



Features

- Up to 192 SC adapters on four height unit (5U)
 - Equipped with 192 SC Adaptors & pigtails
 - Front panel equipped with patch cord manager
 - ODF housing with front hinged door
 - Simply patch panel mounting and dismounting
 - Little mounting depth of 230mm
 - Universally compatible (e.g. ETSI standard compliant)
 - Guaranteed bending radius R30
 - Separated storage levels for loose tubes and pigtails on the same unit
 - Cable entry from the rear or from the side
 - Dimension (WxDxH): 480x230x222mm
-
- 19" 5U slide-in unit on a telescopic drawer, splice tray plate with 16 splice trays radius 30 mm, fastening material, labeling strips and installation manual
 - Front panel equipped with adapters and pigtails

Technical specifications

Fastening (inch):	19"
Height Units (U):	5
Rack mounting version:	Patch Panel
Version:	Splice
Capacity (ports):	192
Connector type (A):	SC
Protection class (IP) connector (A):	20
Polishing connector (A):	PC /APC
Fiber class:	G.657A2 (OS2)
Tube / Wire type:	semi-tight buffer, dry
Fiber- / Conductor diameter:	E9/125 μm
Fiber type:	Single mode (SM)

ODF -96 SCPC /APC G657.A2-Drawer



Features

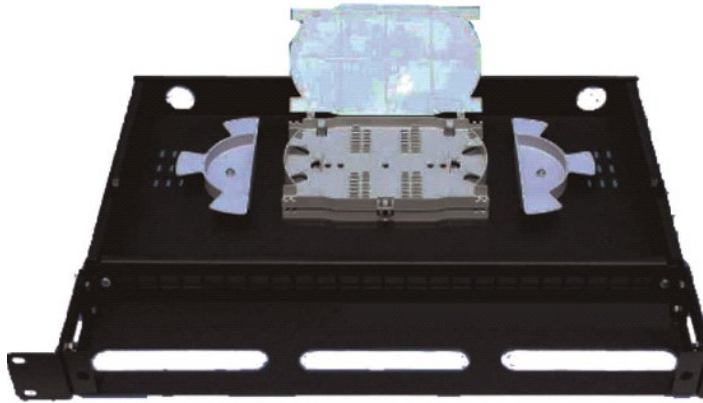
- Up to 96 SC adapters on four height unit (3U)
 - Equipped with 96 SC Adaptors & pigtails
 - Front panel equipped with patch cord manager
 - ODF housing with front hinged door
 - Simply patch panel mounting and dismounting
 - Little mounting depth of 230mm
 - Universally compatible (e.g. ETSI standard compliant)
 - Guaranteed bending radius R30
 - Separated storage levels for loose tubes and pigtails on the same unit
 - Cable entry from the rear or from the side
 - Dimension (WxDxH): 480x195x135mm
-
- 19" 3U slide-in unit on a telescopic drawer, splice tray plate with 8 splice trays radius 30 mm, fastening material, labeling strips and installation manual
 - Front panel equipped with adapters and pigtails

Technical specifications

Fastening (inch):	19"
Height Units (U):	3
Rack mounting version:	Patch Panel
Version:	Splice
Capacity (ports):	96
Connector type (A):	SC
Protection class (IP) connector (A):	20
Polishing connector (A):	PC /APC
Fiber class:	G.657A2 (OS2)
Tube / Wire type:	semi-tight buffer, dry
Fiber- / Conductor diameter:	E9/125 μm
Fiber type:	Single mode (SM)

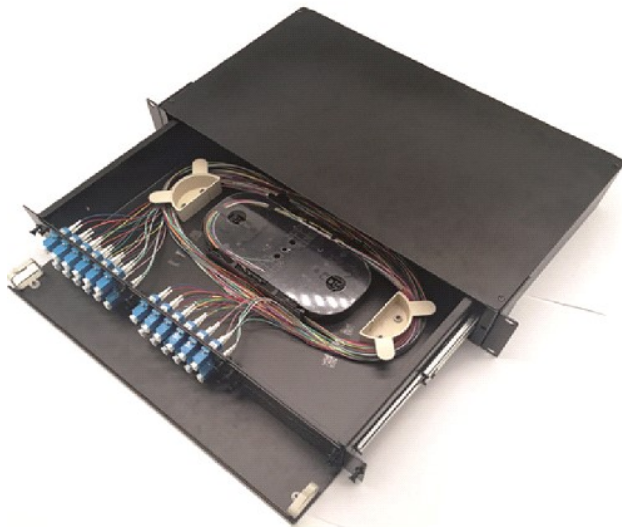
ODF -24/48- 1U 19" SC/PC or APC G657.A2 – Drawer

1U 19" ODF



- 1U 19" ODF drawer
- Dimension (WxDxH):480x320x44mm
- Capacity: 12SC or 24/48LC
- Suitable for : SC, LC, ST and FC types
- Complete with splice cassette, adapters and pigtails
- Plug and play –ready for installation.
- Galvanized sheet
- RAL 7035 or RAL 9004

2U 19" ODF –



- 2U 19" ODF drawer
- Dimension (WxDxH): 480x320x88mm
- Capacity: 96SC or 144LC
- Suitable for : SC, LC, ST and FC types
- Complete with splice cassette, adapters and pigtails
- Plug and play –ready for installation.
- Galvanized sheet
- RAL 7035 or RAL 9004