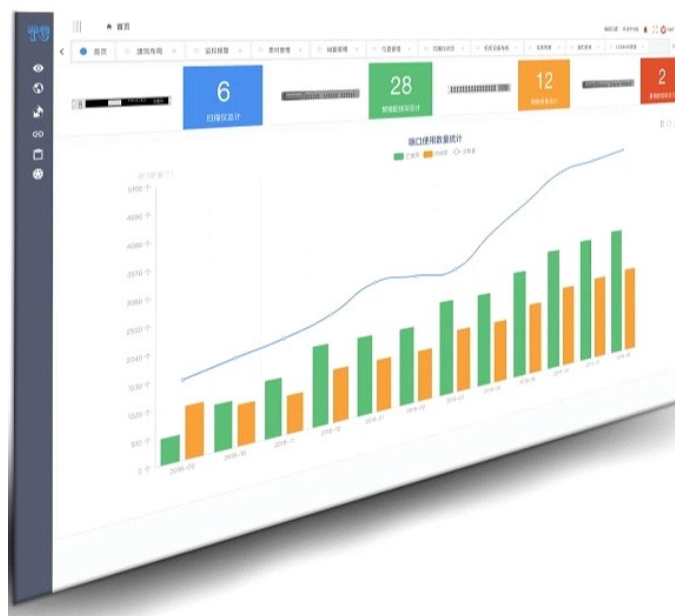


Automated Infrastructure Management Software (AIM) For Data Center



Technical Data

Product Application	Infrastructure Management Platform provides automated management for an intelligent building ICT infrastructure, the best auxiliary management tool for a large local area network
Modules	<ul style="list-style-type: none"> - Including structured cabling. - Network equipment and end-user equipment as well. - Digital rubbing of the entire ICT infrastructure (through a graphical interactive interface). - IT management personnel and field implementation. - All linked together through A work order system,
Work orders	personnel are closely together with intelligent patch panels, and can achieve patch cord automation management, such as new adds, moves, and changes in the entire network of cabinets
Features	<ul style="list-style-type: none"> - Based on BS architecture and HTML 5+CSS+JavaScript technology - AIM management software supports various terminals - user-friendly graphic interface supports major operating systems (including smartphone operating systems) and browsers. - Client apps with the Baidu map plug-in ensure rapid and accurate creation or discovery of any building, - suitable for multi-site ICT infrastructure management of chain businesses, group enterprises, and multinational enterprises. - structured cabling equipment built in, including Intelligent patch panel products, mainstream brands of switches, servers, and other devices

	<ul style="list-style-type: none">- Supports customized equipment libraries for users as a way to create their own equipment and infinitely expand their equipment libraries.
Digital map system	<ul style="list-style-type: none">- used in the floor information point layout- Supports common PDF version vector drawings- non-polar scaling and quick positioning to each building unit- including data center cabinet channels, management rooms, work areas, and even terminal information panels.- Equipment installation and configuration within the cabinet are reproduced in a 1:1 graph ratio. resulting in a digital rubbing