



MAHER
HOMES

4



2 & 3 BHK
VIBRANT RESIDENTIAL
COMMUNITY

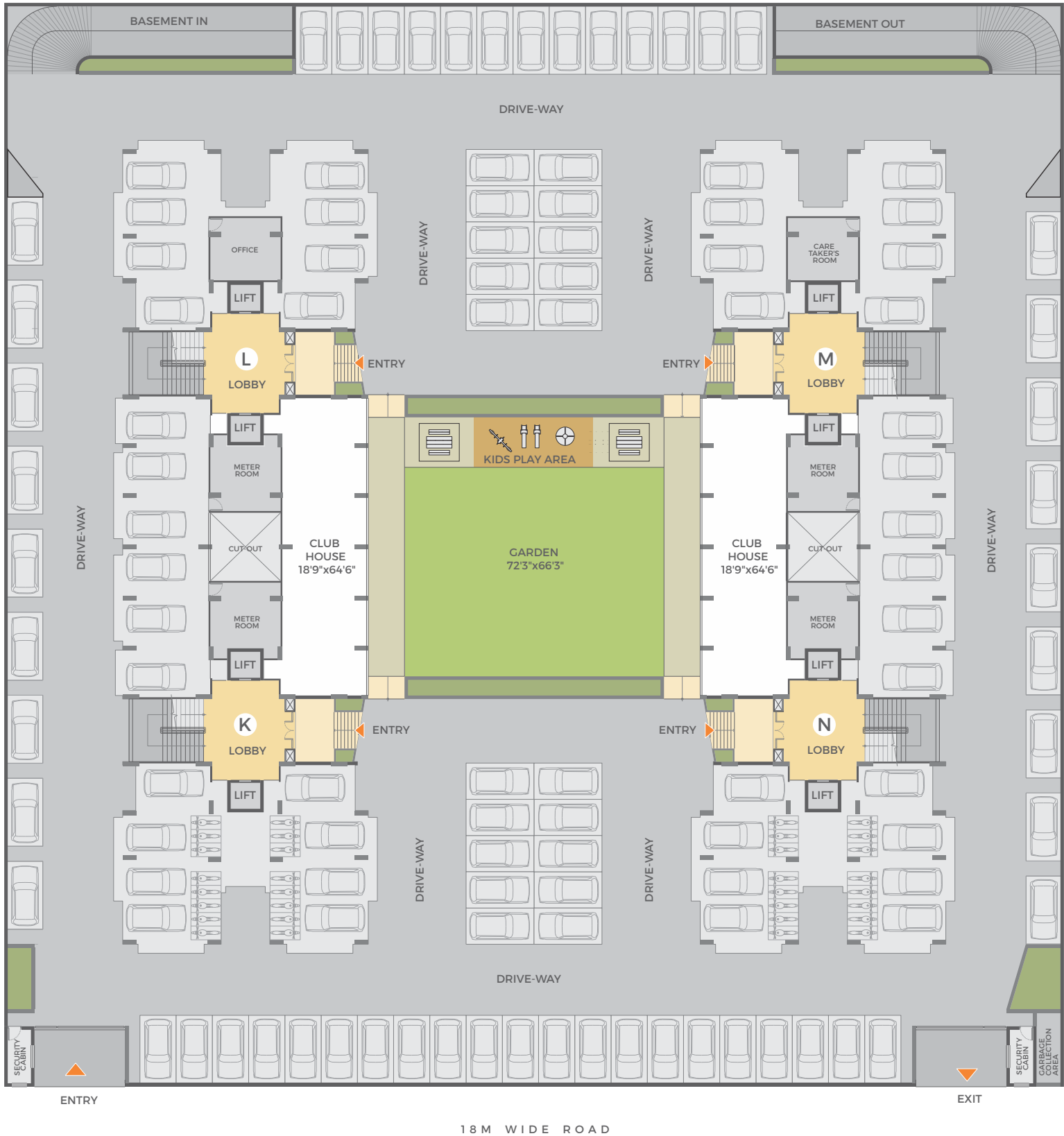
welcome to
a community called
MAHER
HOMES



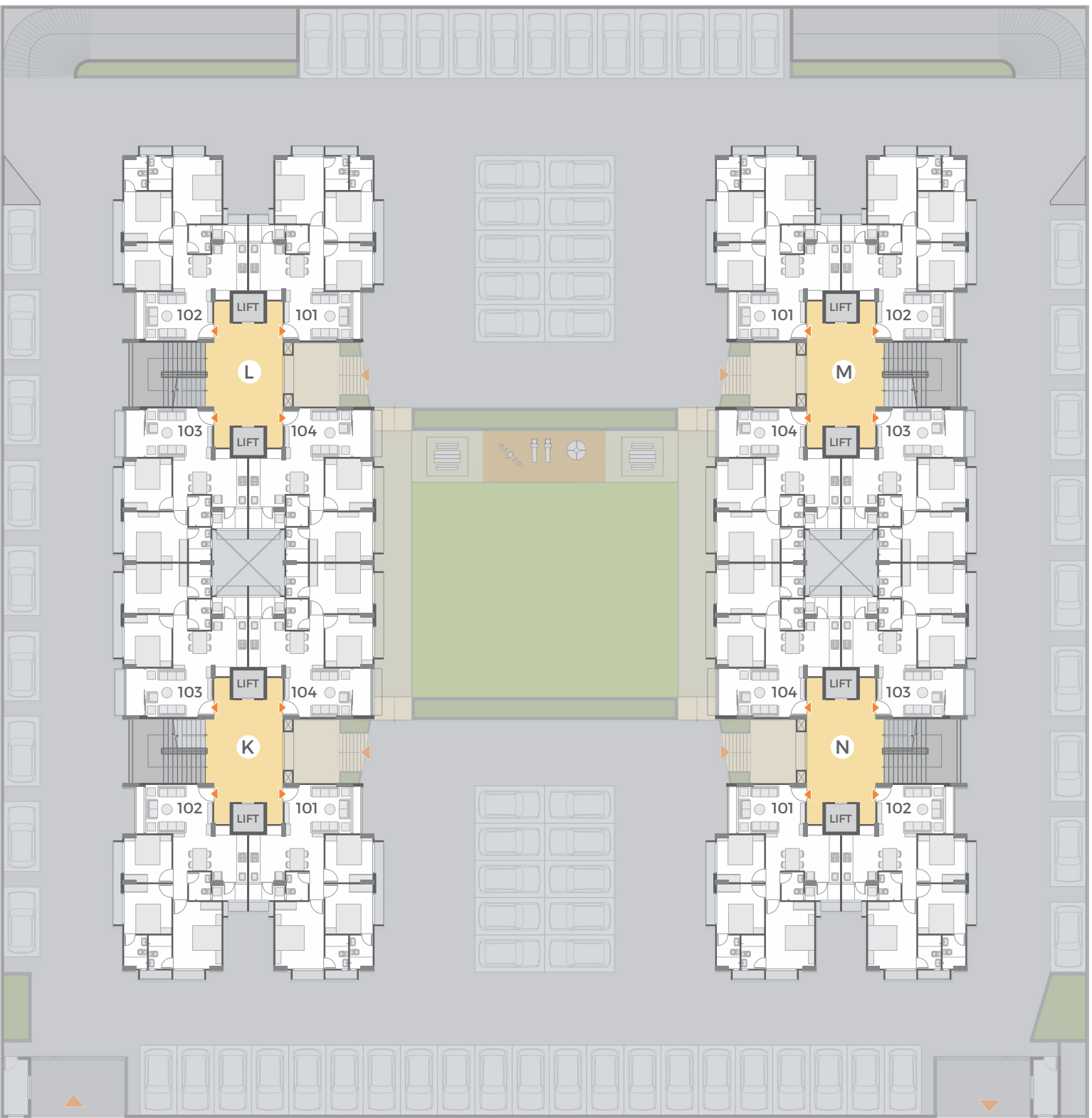


a purely residential community

SITE
PLAN

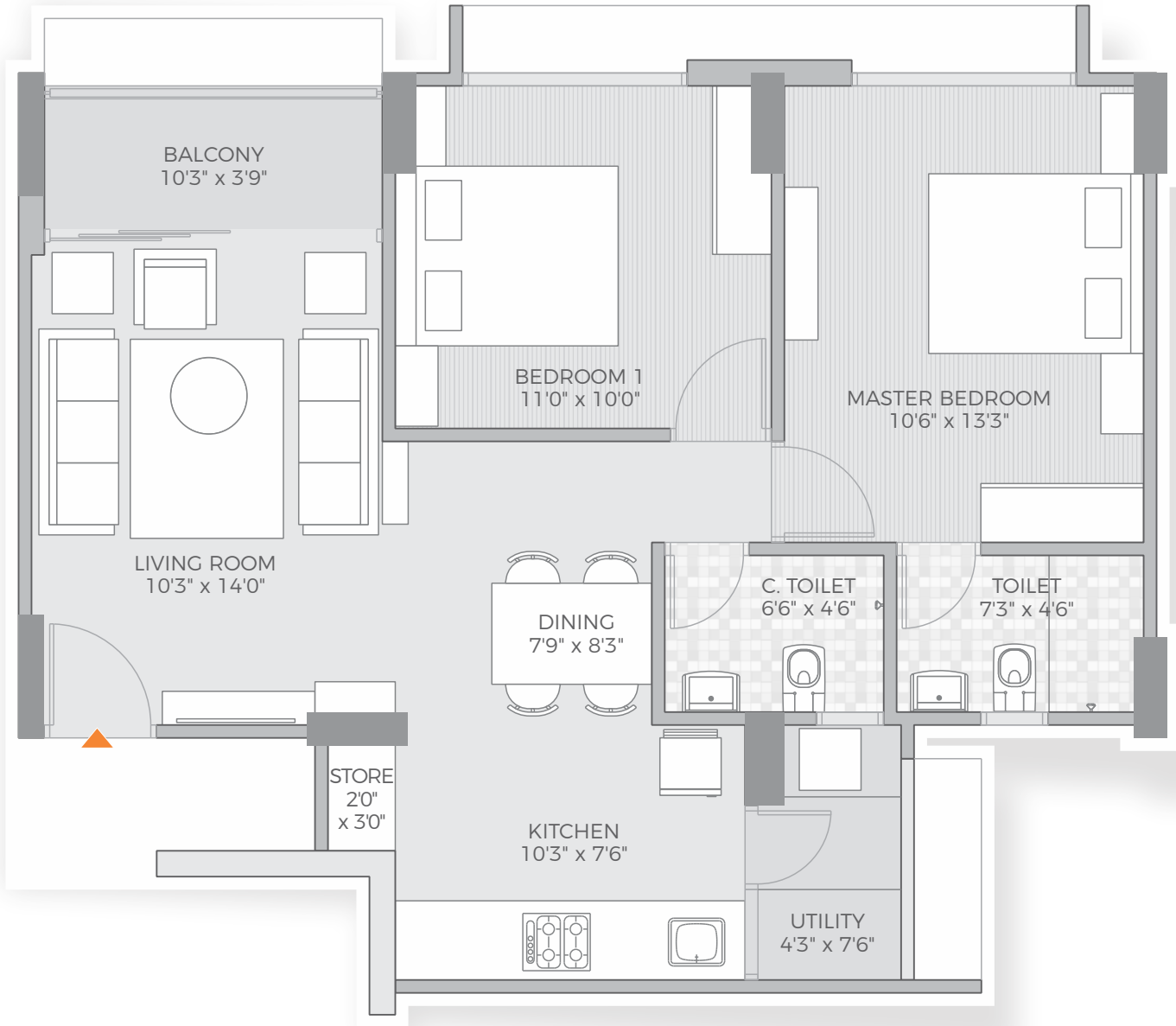
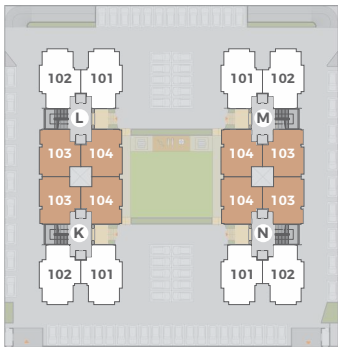


TYPICAL
FLOOR PLAN

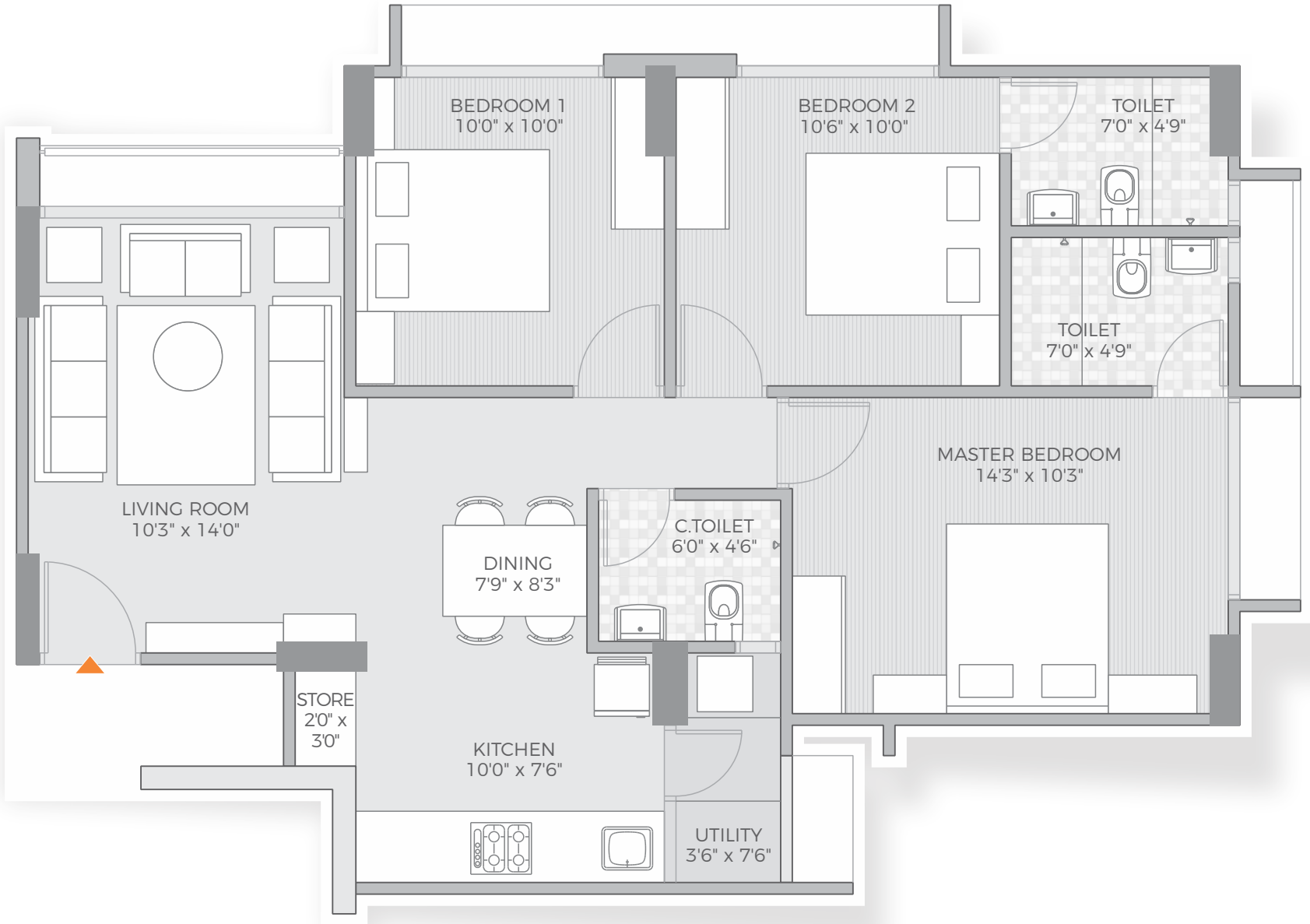
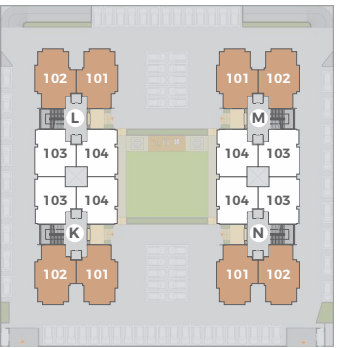




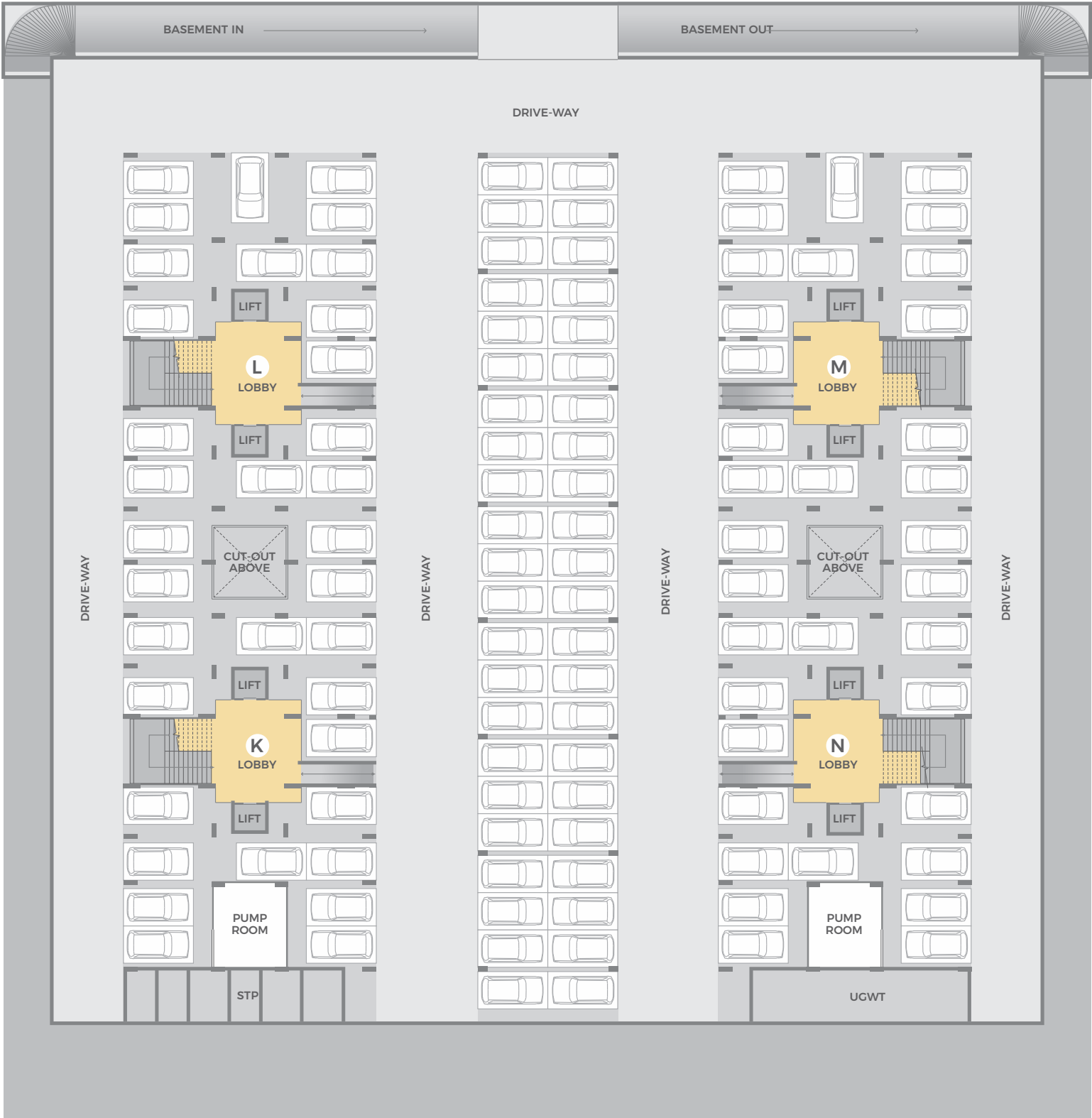
2 BHK
UNIT PLAN



3 BHK
UNIT PLAN



BASEMENT PLAN



SPECIFICATIONS

- WALL FINISH:**
- Internal smooth finished plaster with 2 coat of birla putty
 - Exterior double coated sand faced plaster with acrylic paint
- FLOORING:**
- Double charge Vitrified or equivalent flooring in living and dining areas, kitchen and all bedrooms
 - Kota stone or similar in wash area
- KITCHEN:**
- Polished natural granite platform
 - Stainless steel kitchen sink
 - Vitrified tiles dado up to lintel level on wall above kitchen platform
- DOORS & WINDOWS:**
- Decorative wooden main door with wooden frame & brass/s.s. fittings
 - Laminated Flush doors with wooden frame in all bedrooms and bathrooms & brass/s.s. fittings
 - Fully glazed powder coated aluminium sliding windows with stone revile
- BATHROOMS:**
- Ceramic tile flooring in all bathrooms
 - Coloured tiles dado up to lintel level
- ELECTRIFICATION:**
- Concealed copper wiring with adequate A.C, Geyser and telephone points in each unit

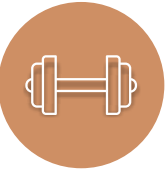
AMENITIES



24 HOURS
SECURITY



GARDEN
AREA



CLUB HOUSE WITH
GYM AND
SPORTS ROOM



CHILDREN
PLAY AREA



PRESSURE
SYSTEM FOR
WATER SUPPLY



RAIN WATER
HARVESTING



GENERATOR BACKUP
FOR COMMON
UTILITIES



CCTV AT
GROUND
LEVEL



INTERCOM
SYSTEM

KEY PLAN



MAHER
HOMES 4

DEVELOPER



VISHWANATH
realtor

Sales Office: B/H Maher Homes 2, Nanaji Deshmukh Ave, Opp. Club O7,
Sky City Rd, Off S.P. Ring Rd, Shela, Ahmedabad 380058

Timings: 10 am – 6pm all days | Tuesday Closed

Ph: +91 98797 89681, 98797 89039

Email: info@vishwanathrealtor.com

Web: www.vishwanathrealtor.com

FB: www.facebook.com/vishwanathrealtor

www.gujrera.gujarat.gov.in

RERA Reg. No.: PR/GJ/AHMEDABAD/SANAND/AUDA/RAA07731/021220

Architect
Groundwork Architecture
Ph.: 079 26926004

Structural Consultant
PNL Engineering Consultants Pvt Ltd
Ph: 079 26446318

Plumbing Consultant
Vraj Sanitation
Ph.: 0265 2487479

Specific Notes

- This brochure is meant for private circulation only.
- The developer reserves the rights to change, revise or make any additions, omissions, alterations or modifications to the scheme as a whole, or part thereof at their sole discretion without any prior notice. Such changes will be binding on all members.
- All dimensions presented herein are approximate and measurements are made from unfinished surfaces.
- External changes of any sort will not be permitted. Internal changes may be permitted with prior written permission from the developer and will be charged separately.
- This brochure is meant for the purposes of presentation only, and should not be treated as any form of binding document, offer or legal contract.
- Site development is subject to clearances from AUDA and other government entities.

Disclaimer :

Whilst reasonable care has been taken in the preparation of the brochure, the developer and its agents shall not be held responsible for any inaccuracies in its contents.