



**KAVISHA  
AER**



Kavisha Group takes pride in having executed multiple landmarks in Ahmedabad. As a company, we've set benchmarks for excellence and cared for even the smallest detail and requirements of our clients and associates. It is the people who make all our projects successful and this will never change.

Our aim is to keep offering luxurious amenities at affordable prices. We are born to build. With our expertise and experience in quality construction and precise execution, we look forward to 'building a better and a sustainable future.'

We take pride in admitting that all our projects have one common factor, care. We make sure to care for the people, the environment and everything and everyone who calls this planet home.

#KavishaCares

#### ONGOING PROJECTS

KAVISHA THE CANVAS at wapa	KAVISHA ATRIA at shela	KAVISHA AMARA at shela	KAVISHA CELEBRATION CITY CENTER at south bopal	KAVISHA PEBBLE BAY 2 at chandkheda	KAVISHA PANORAMA at south bopal	KAVISHA URBANIA at south bopal	KAVISHA CELEBRATION at south bopal
----------------------------------	------------------------------	------------------------------	---	--	---------------------------------------	--------------------------------------	--

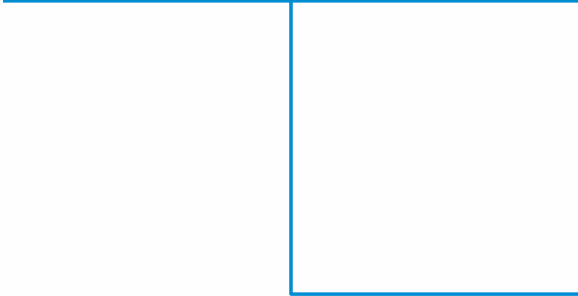
#### COMPLETED PROJECTS





# Where Breeze And Sunshine Are Your Forever Companions

Bathed in sunlight's artistry,  
breathe in fresh air's revitalizing  
touch. Find enchantment in  
radiant spaces, where positivity  
dances.



KAVISHA  
AER

# Here's The Breath Of Fresh AER That You Deserve!

Welcome to AER, where we believe in giving you more than just a living space. Our apartments provide ample room for you to dream, explore, and manifest your desires. Discover the epitome of comfortable and airy living in our 3 and 2 BHK apartments. Experience a lifestyle where the gentle breeze and abundant natural light fill your home with a sense of tranquility.





## Club House

Indoor Games | Gym | Rooftop Café

# An Oasis Of Exquisite Pleasures

Step into the exquisite clubhouse, where luxury and leisure intertwine. Connect with fellow residents, host memorable gatherings, and unwind in the opulent surroundings. Here, every moment becomes a cherished memory. Indulge in a friendly game, workout in the gym or savour your favourite food at the rooftop café.



Swimming Pool & Sit-out

## Dive Into Blissful Escapes



Escape into a world of bliss with AER'S shimmering swimming pool. Immerse yourself in the crystal-clear waters, enjoy leisurely swims, or simply bask in the sun-kissed ambience. Experience the perfect blend of relaxation and rejuvenation as you sit with your friends in the well-designed sit-outs enjoying the air and talking your hearts out

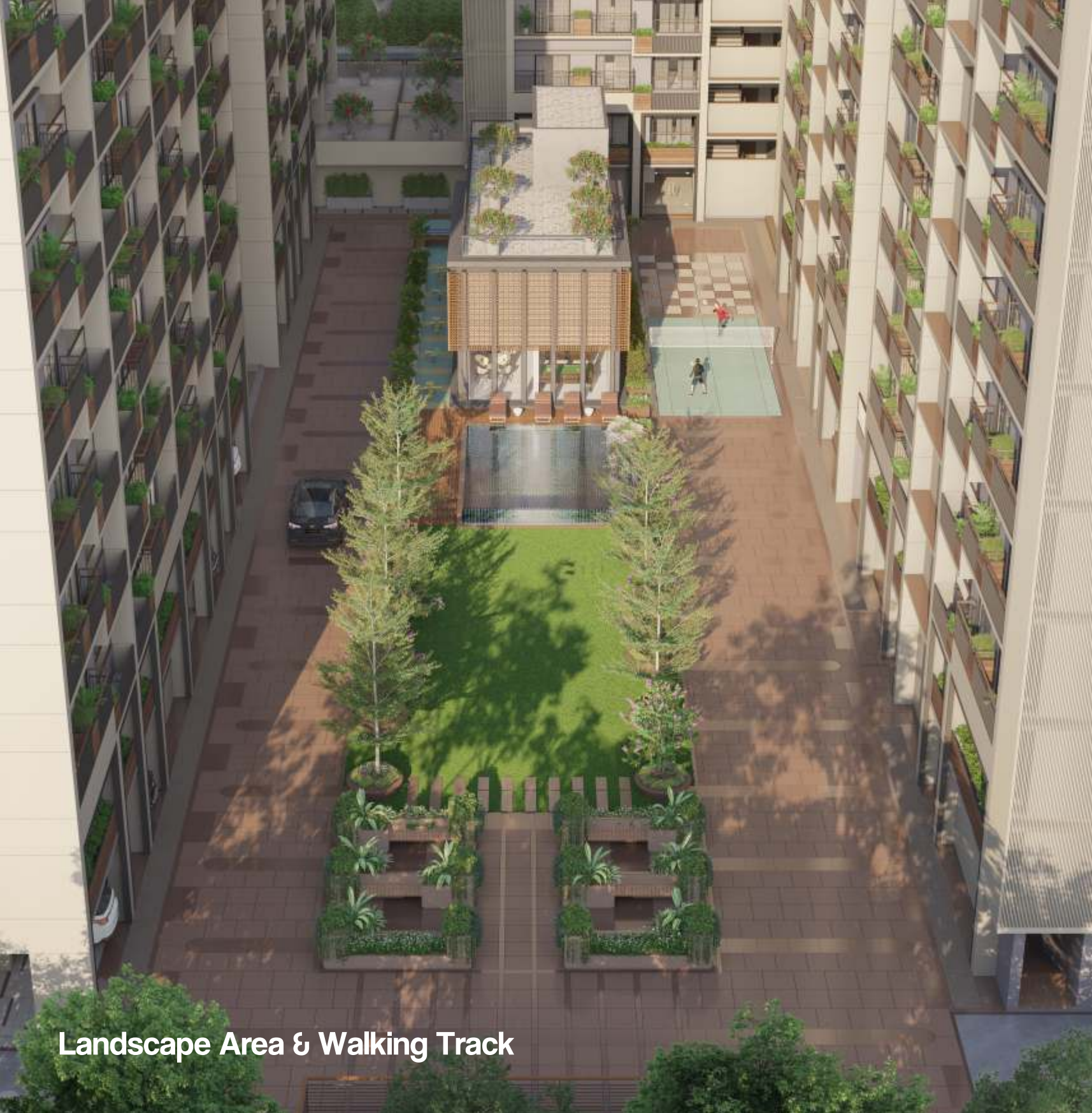


Badminton & Multipurpose Court

Step Into The Ultimate Realm  
Of Fun And Excitement

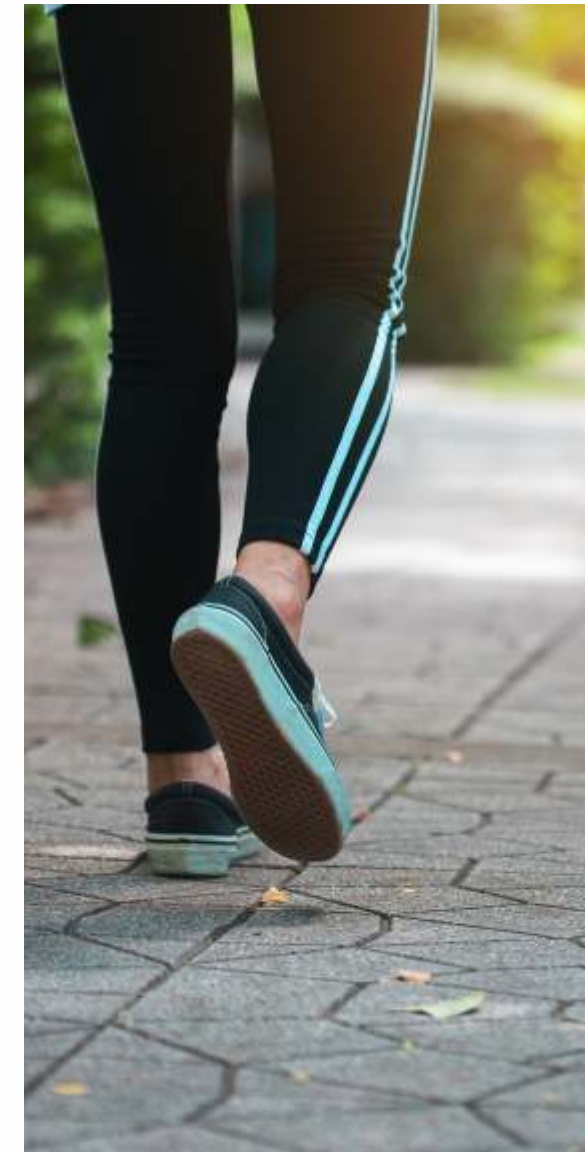


Where fun takes center stage let laughter and joy fill the air at our vibrant play court. Engage in friendly matches, bond with neighbours, and create unforgettable memories with loved ones. Here, excitement and happiness know no bounds.



Landscape Area & Walking Track

## Leisurely Stroll In Our Landscaped Gardens



Immerse yourself in the serene ambience of our meticulously crafted landscaped gardens. Take leisurely strolls amidst picturesque surroundings, allowing nature's tranquillity to rejuvenate your mind, body, and soul.



Planter



Walking  
Track



Landscape  
Area



Swimming  
Pool



Terrace  
Café



Gym



Children  
Play Area



Fountain



Badminton  
Court



Indoor  
Games



Multi-Purpose  
Court



Club  
House



Senior Citizen  
Sit-out



Mother's  
Sit-out

# Unveil A World Of Luxurious Delights

Indulge a haven of opulence where every desire finds fulfillment. Immerse yourself in a realm of unmatched amenities designed to pamper your senses and elevate your lifestyle. Indulge in the pleasures that await and unlock a life of unrivaled luxury and fulfillment.



GROUND FLOOR



- Amenities Legend
- 1. Planter
  - 2. Tree Pits (two-tier) With Shade Giving Trees
  - 3. Parking Area
  - 4. Entrance Area Ramp
  - 5. Entrance Theme Wall With Signage & Theme Planting
  - 6. Security Cabin With Boom Gate
  - 7. Avenue Planting
  - 8. Driveway
  - 9. Block Entrances
  - 10. Electrical Substation
  - 11. Jogging/walking Track
  - 12. Central Arrival Plaza
  - 13. Arrival Court
  - 14. Elemental Raised Circular Planters
  - 15. Central Lawn Area
  - 16. Infinity Swimming Pool
  - 17. Kids Pool
  - 18. Pool Deck With Benches
  - 19. Water Fountain Spouts
  - 20. Pool Deck
  - 21. Clubhouse
  - 22. Mother's Sit Out Court
  - 23. Children's Play Area
  - 24. Sit Out
  - 25. Badminton Court
  - 26. Kids Play Court With Floor Games
  - 27. Multipurpose Play Court
  - 28. Senior Citizen's Sit Out

18.00 MT. WIDE ROAD

18.00 MT. WIDE ROAD



FIRST FLOOR



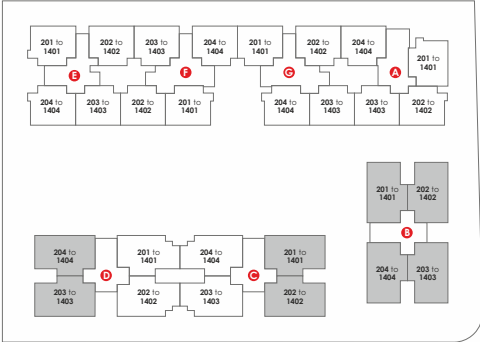
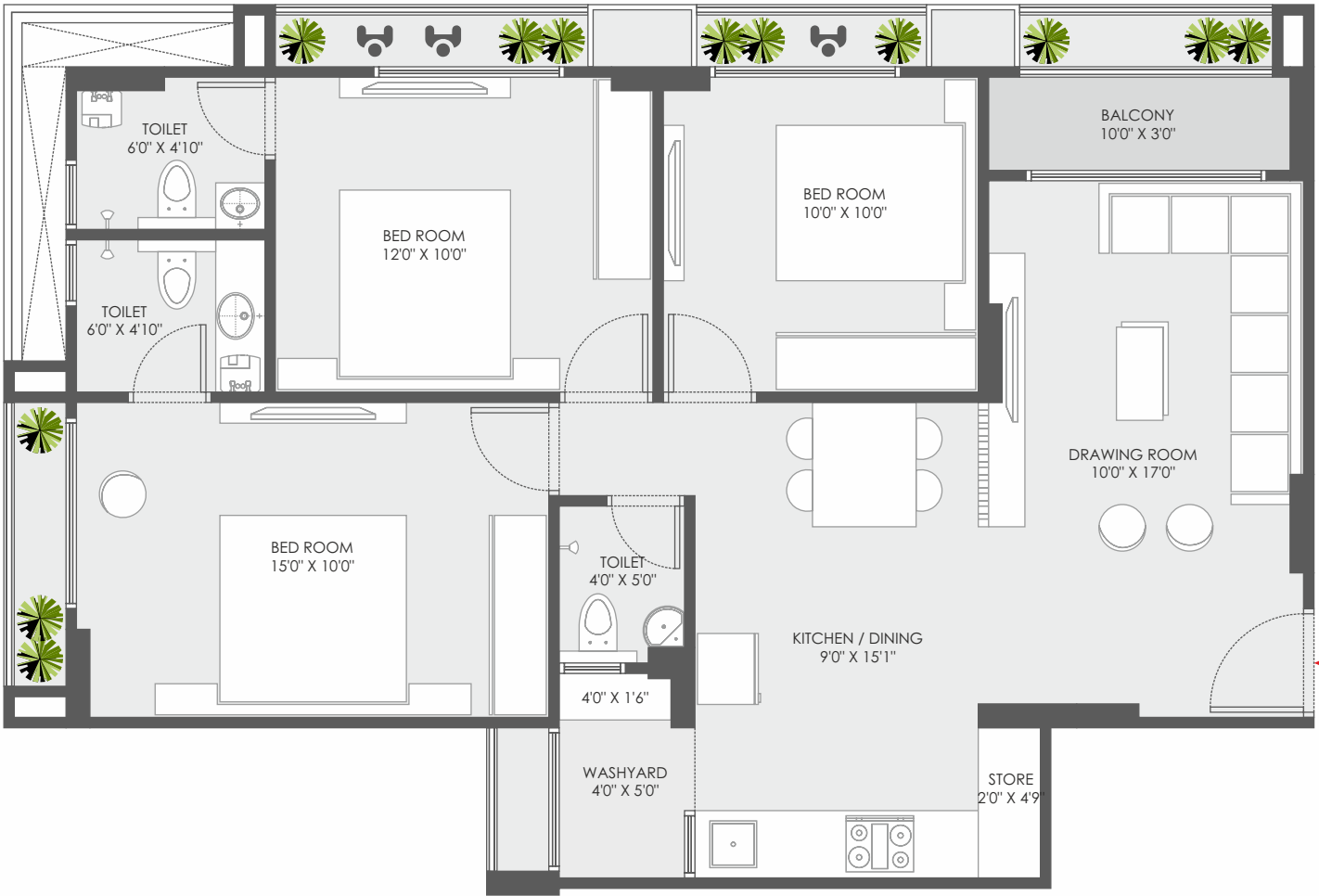
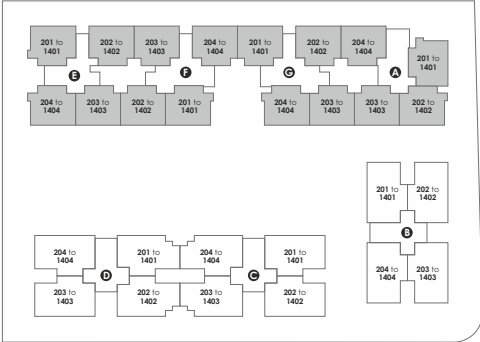
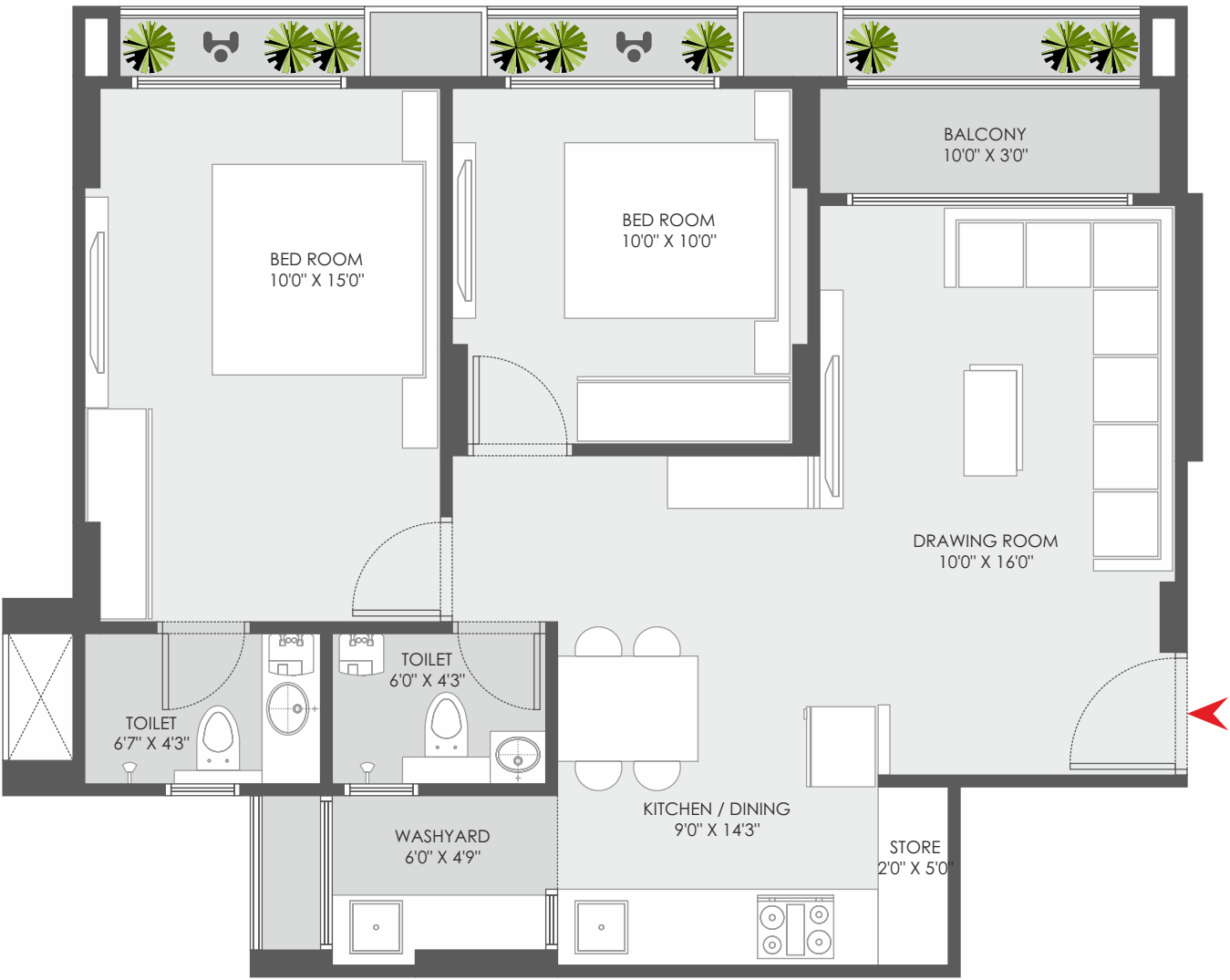
18.00 MT. WIDE ROAD

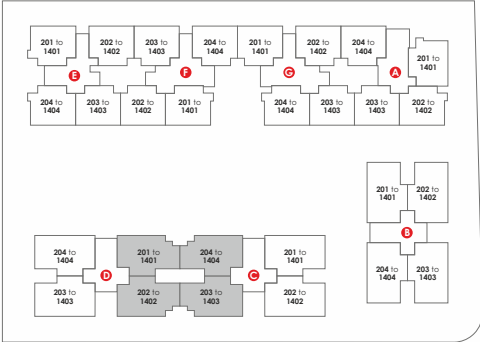
18.00 MT. WIDE ROAD



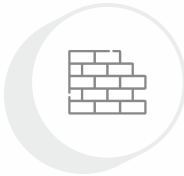
TYPICAL FLOOR







# STANDARD SPECIFICATION



- wall finish**
- internal smooth finish mala plaster with putty
  - external : double coat sand faced plaster or texture finish.



- flooring**
- vitrified tiles flooring in all rooms.



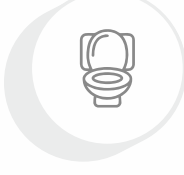
- kitchen**
- standing polished natural granite kitchen
  - platform with sink & glazed tiles dado above the platform up to plinth level.



- doors**
- decorative main door having lock of reputed company
  - internal flush doors with colour



- windows**
- aluminum anodized section sliding windows with glass & stone jambs.



- toilet**
- ceramic tiles flooring in all toilets, glazed tiles dado up to lintel level.



- plumbing**
- concealed plumbing of good quality UPVC & CPVC pipes, C.P. fittings & sanitary ware of reputed brands.



- electrification**
- single phase meter + mcb & elcb tripper with concealed wiring with adequate points with quality fittings.



- paint**
- exterior painting of acrylic paint, internal walls double coat putty finish.

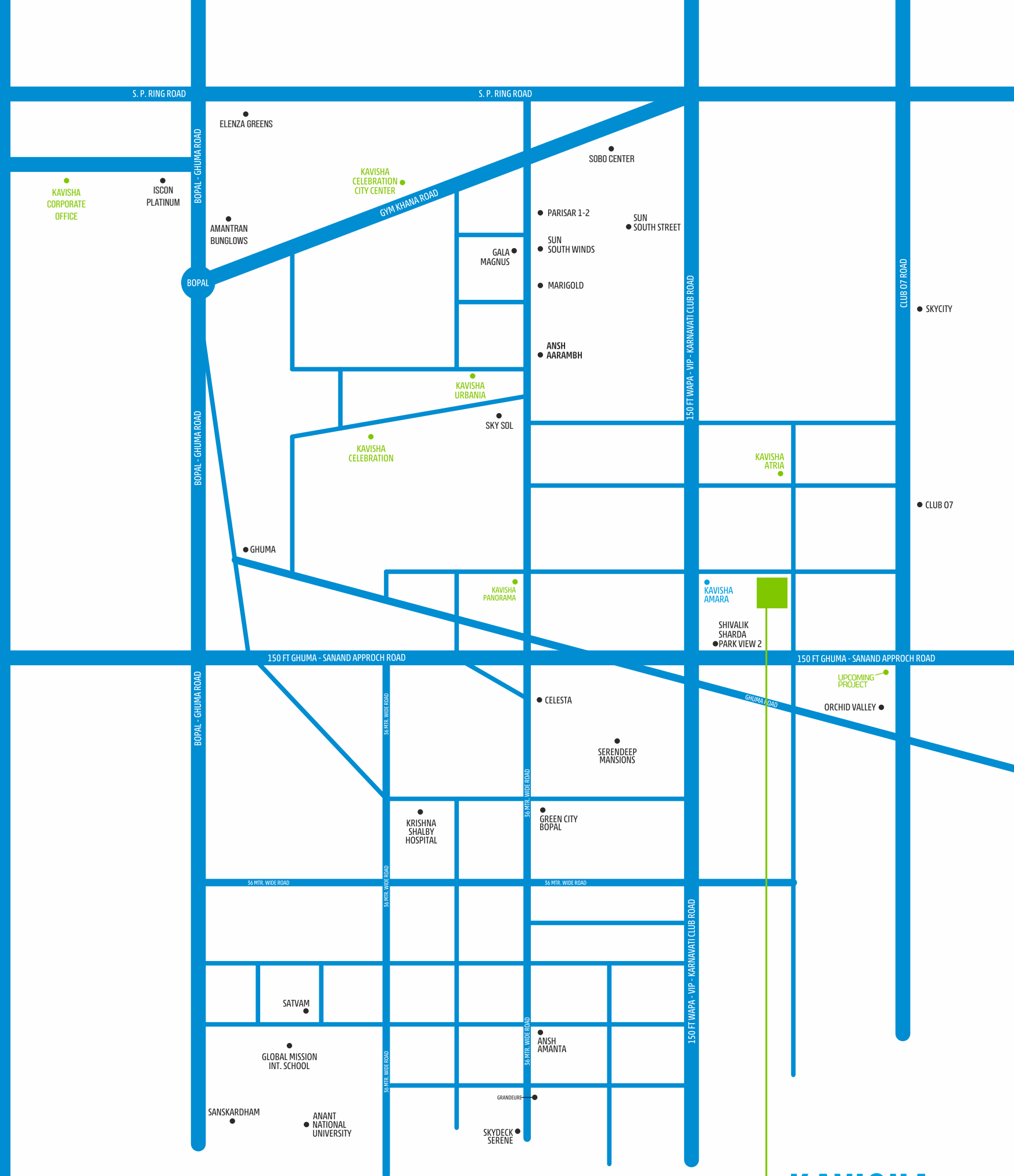


- lifts**
- fine quality fully automatic lifts.

Thank you for placing your trust in Kavisha Group. We are deeply grateful for the opportunity to be a part of your journey towards finding your dream home. At AER, we are committed to providing you with an extraordinary living experience filled with breezy living and the refreshing embrace of light air. Your satisfaction and happiness are our top priorities, and we are dedicated to exceeding your expectations. We eagerly await the privilege of welcoming you to AER and making your dreams come true.

**RAMESH PATEL**

Founder, Chief Managing Director



**KAVISHA**  
**AER**

Kavisha Atria Rd, Near Maher Homes, Shela, Gujarat 380058  
sales@kavishacorp.com | www.kavishacorp.com

📞 9016132411 / 13

PR/GJ/AHMEDABAD/SANAND/AUDA/MAA11869/290523 / WEBSITE: WWW.GUJRERA.GUJARAT.GOV.IN



**BORN TO BUILD!**

**@SHELA, AHMEDABAD**

**9016132401**

**[sales@kavishacorp.com](mailto:sales@kavishacorp.com) | [www.kavishacorp.com](http://www.kavishacorp.com)**

**PR/GJ/AHMEDABAD/SANAND/AUDA/MAA11869/290523 / WEBSITE: [WWW.GUJRERA.GUJARAT.GOV.IN](http://WWW.GUJRERA.GUJARAT.GOV.IN)**