
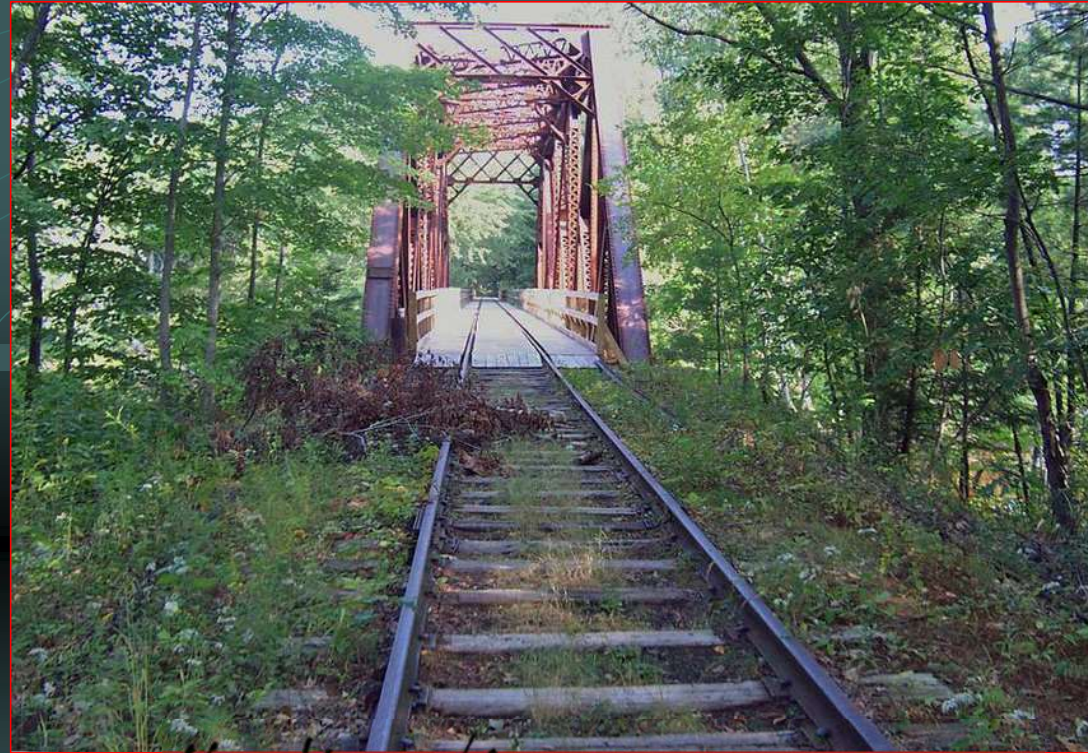


Conway Branch Rail Line



Proposal from HB1468 study committee to transfer rail line from DOT to DNCR for future recreational rail trail

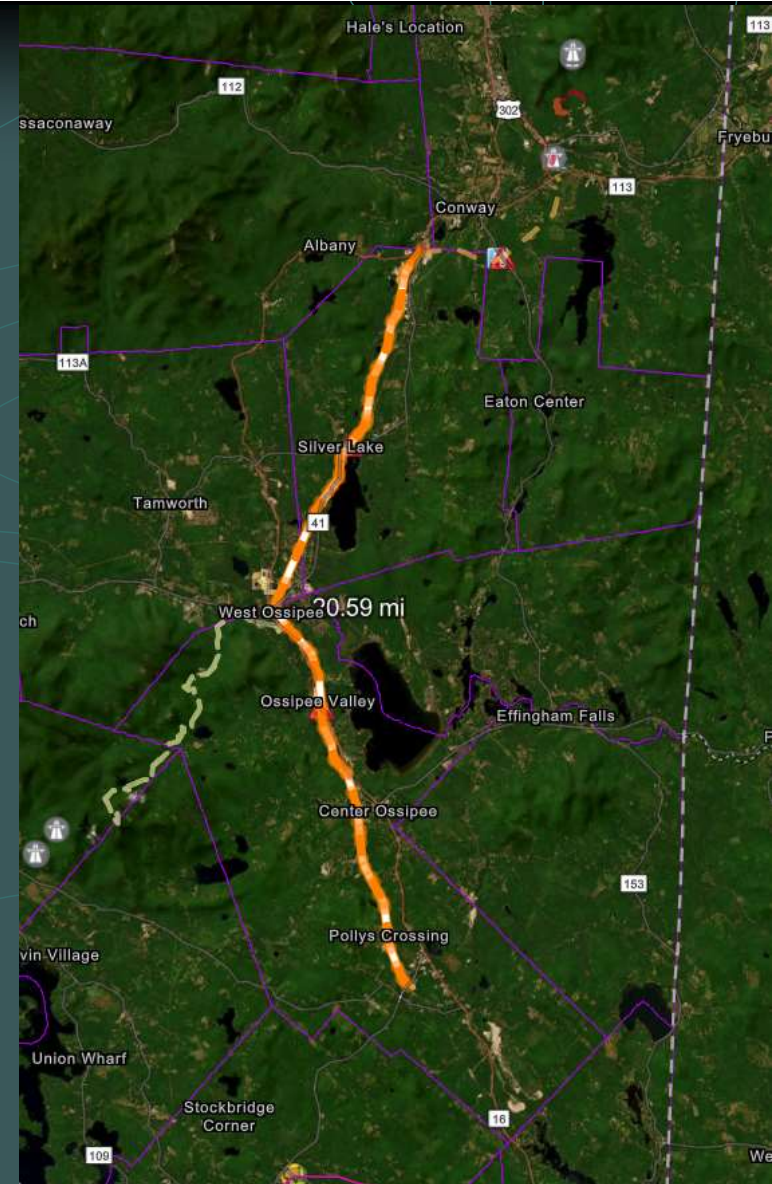


New Hampshire
DOT
Department of Transportation

New Hampshire
Department of
Transportation

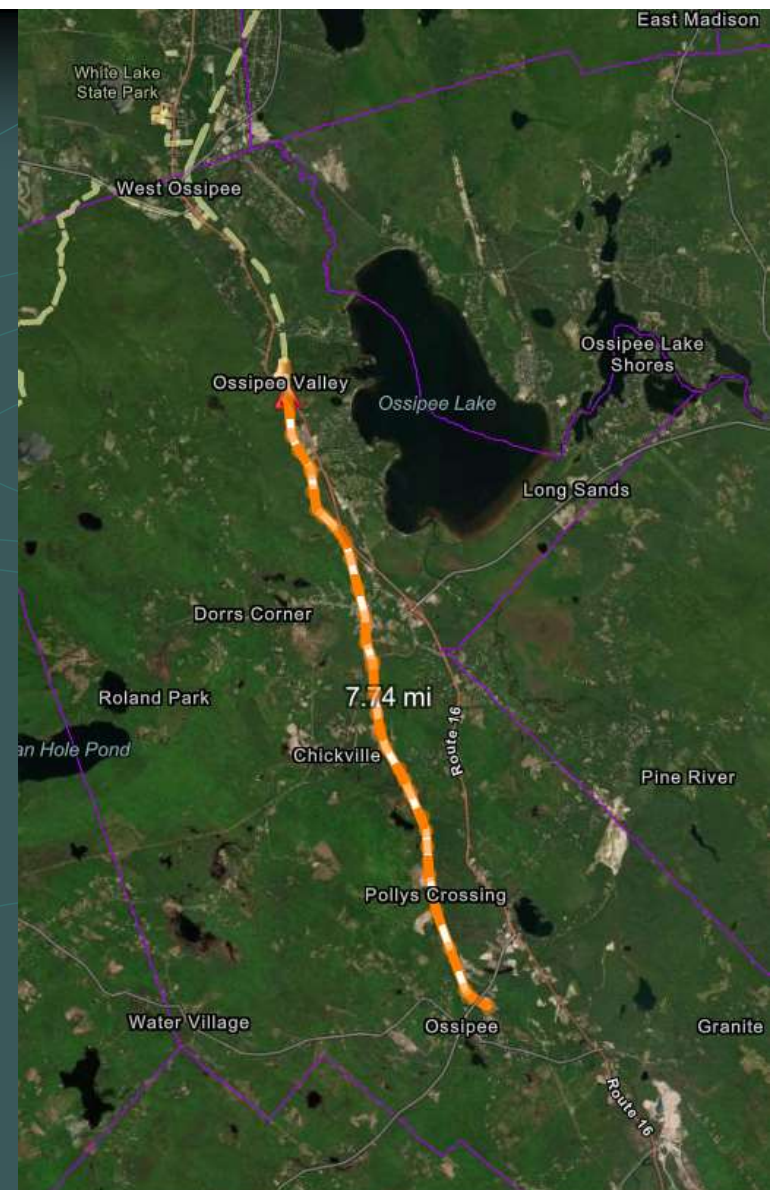
Entire rail line location

- Roughly 21 miles from Rt 28 in Ossipee to Albany town border
- 3 distinct "Sections"
- 700' gap privately owned by Neil Underwood just north of Silver Lake.
- Currently being used as an existing snowmobile trail, Corridor 19 (major North/South corridor)



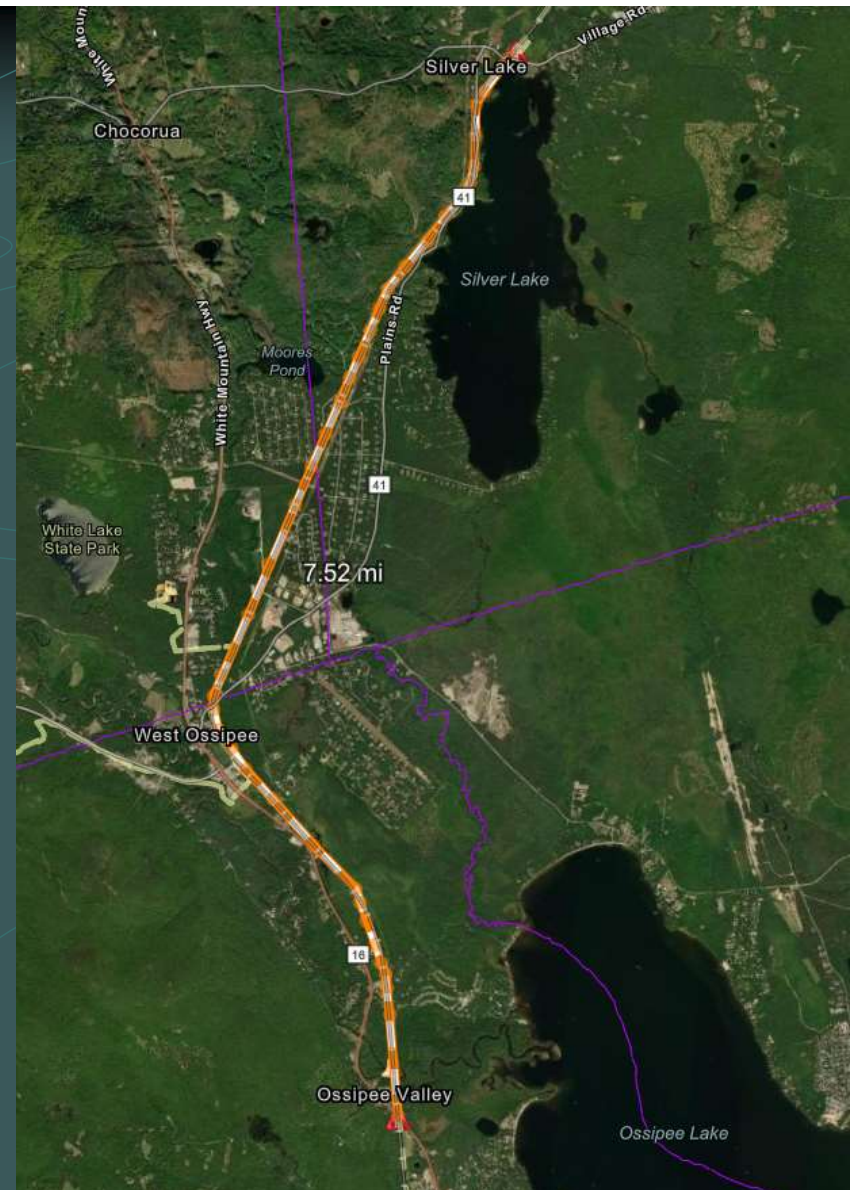
Section 1

- Roughly ~7.74 miles
- Starts at Rt 28 in Ossipee, ends at Rt 16 in “Ossipee Valley”
- This section is used by the Cotton Valley Rail Trail Club for recreation under the cooperative agreement between DNCR & DOT.
- This section could be turned into a year-round multi-use trail that is similar to the Cotton Valley Rail Trail.



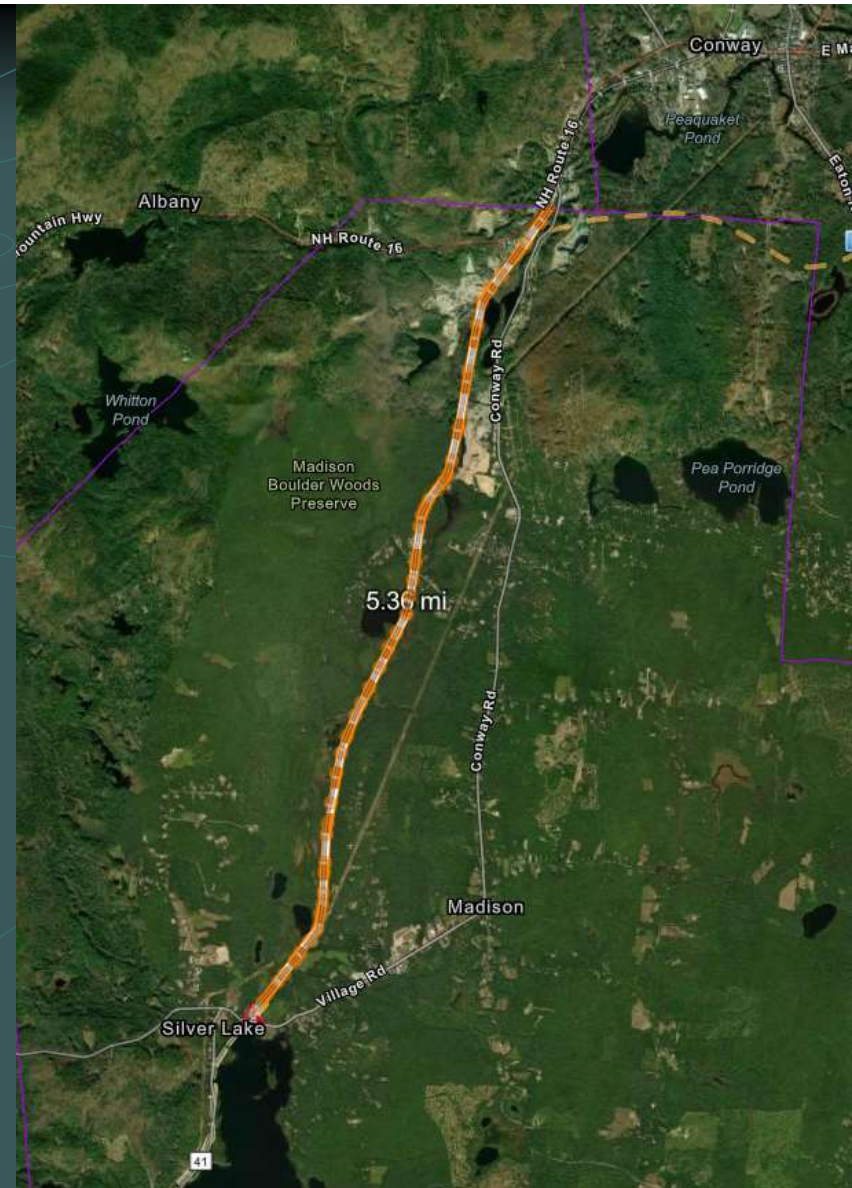
Section 2

- Roughly ~7.52 miles
- from “Ossipee Valley” at Rt 16 to the southern edge of Silver Lake RR.
- This section could be used to create a year-round pedestrian friendly trail. It goes through more “down-town” populated areas.



Section 3

- Roughly ~5.36 miles
- From Silver Lake RR property to the Albany town line.
- The snowmobile corridor currently travels over the privately owned section owned by Neil Underwood.



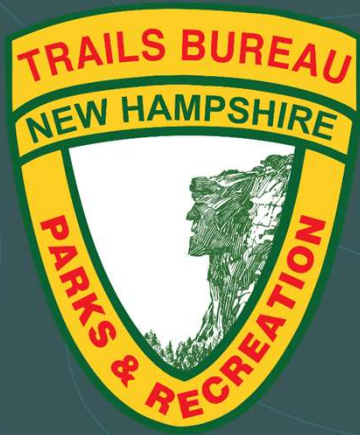
Neil Underwood property

- Owns ~700' just north of Silver Lake
- Will close snowmobile access if he is not allowed to have a pedal bike business on the rails north of his property.
- Pedal bikes could stage at his property and go north to Boulder Rd.



NH Bureau of Trails Overview

Conway Branch Advisory
Committee Presentation
June 19, 2025



History

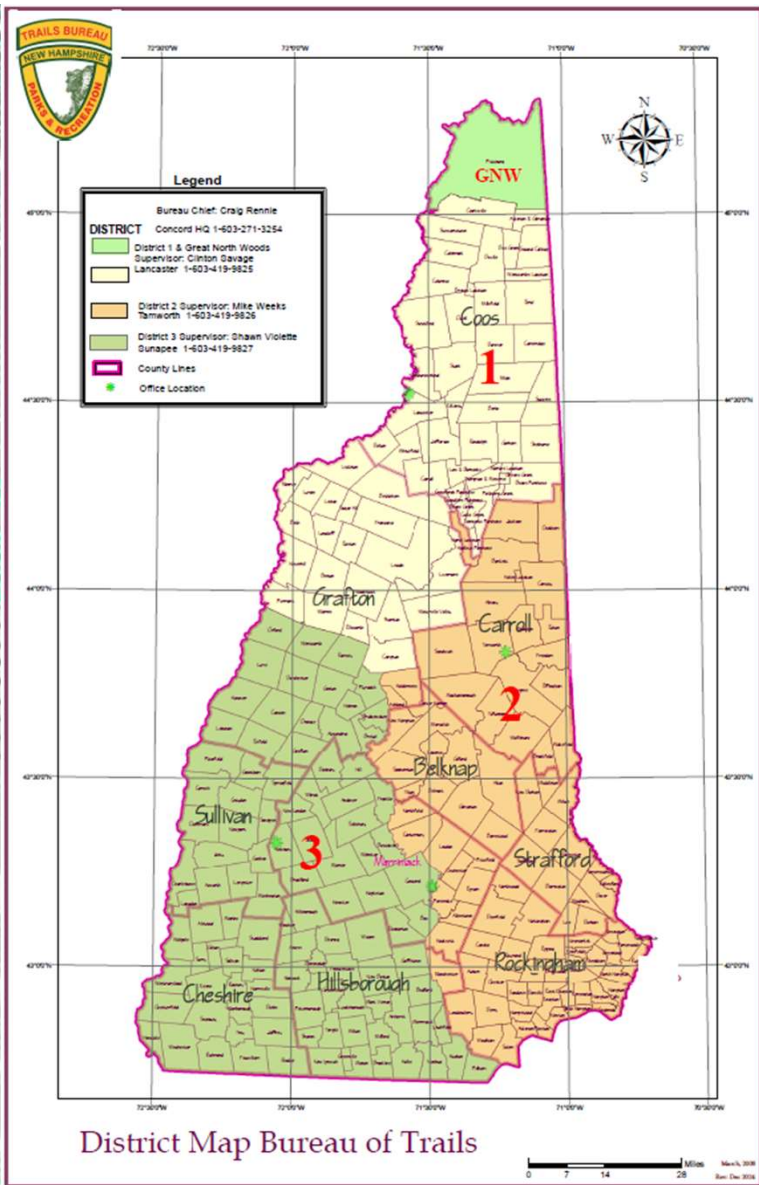
- The Bureau of Trails was created in 1973, by HB 10, as the **Bureau of Off-Highway Vehicles** and charged with trying to manage snowmobile and trailbike activities of the time.
- In 1993 name changed to **Bureau of Trails (BOT)** to reflect the expanding role of the Bureau, including non-motorized trails with the addition of the federal Recreational Trails Program (RTP).



Who are the Bureau of Trails?



- Bureau Chief, Craig Rennie
- Deputy Chief, Alexis Rudko
- Administrative Secretary, Margaret Morrison
- RTP Coordinator, Brianna Leone
- GIA Coordinator, Taya Ferris
- Non-motorized Coordinator, Andrew Pacuk
- 3 District Supervisors: Clint Savage, Shawn Violette, Mike Weeks
- 8 Equipment Operators: Dwayne Covell, Hunter Roy, Leo Lavoie, Jeff Parker, Peter Franklin, Josh White, Frank Drew and Pete Kenney (part time).



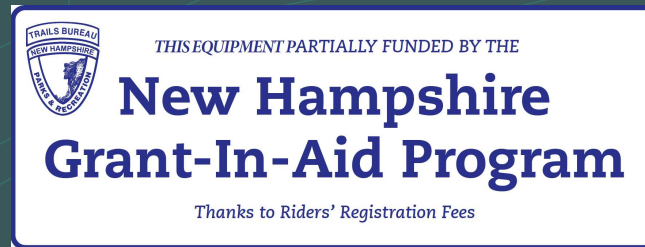
Where do we operate?

- The state's trail system is divided into 3 field districts where our District Supervisors and Equipment Operators work.
- The Bureau manages 320+ miles of state-owned multi-use rail trails, 7,000 miles of snowmobile trails, over 1,000 miles of OHRV trails throughout NH.
- BOT administers trails on state and federal lands and assists organizations, municipalities and OHRV/snowmobile clubs with trail-related activities on both public and private lands. Approximately 80% of our trail network occurs on private property!

What we do: Bureau Responsibilities

- Plan, develop and maintain the Statewide Trail System (RSA 216-F)
- Coordinate with F&G, F&L and DOT on OHRVs and snowmobile use in NH (RSA 215-A)
- Administer funds for trails through

Grant In Aid (GIA)
Recreational Trails Program (RTP)



- Obtain easements and ROW for trails, trail facilities and/or property acquisition
- Act as liaison between landowners and OHRV and snowmobile users
- Recommend statutory changes relating to OHRVs/snowmobiles and rail trails
- Receive all requests for OHRV/snowmobile DOT road crossings and connectors
- Participate in studying the effects of OHRV and snowmobile operation in NH
- Promote proper use of trail signs and trail etiquette



What we do: trail maintenance

Our field staff of highly skilled equipment operators perform various trail maintenance activities such as:

- Repair and replace bridges, abutments, culverts, walls
- Clean ditch lines and culverts - extremely important to keep trails dry
- Mowing, brush cutting, tree removal on trail corridors
- Build and maintain parking areas for public trail use
- Grooming and grading trails year round
- Emergency repairs from storm damage

We also work with numerous volunteers through motorized and non-motorized clubs to assist us with this maintenance



BEST MANAGEMENT PRACTICES

For Erosion Control During Trail Maintenance and Construction

NH Trail Construction and Maintenance Manual



*Keep trails out of the water;
and water out of the Trails*

STATE OF NEW HAMPSHIRE
Department of Resources and
Economic Development
Division of Parks & Recreation
Bureau of Trails

How do we fund it?

- The Trails Bureau is funded *SOLELY* by OHRV and snowmobile registrations and gas taxes on OHRV vehicle usage.
- The bureau does NOT receive general funds or State Park toll booth fees.



Special Events: BOT hosts, participates and promotes several large events annually

Jericho ATV Festival
Easterseals Ride In
Trail Master Workshop
NHTS Presidents Meeting
Grass Drags
Councilor Snowmobile Ride
NHTS Annual Meeting
NHOHVA Annual Meeting
NHRTC Annual Meeting



Partnerships and Volunteers





Questions?

