

The Benefits of Forest Bathing (Shinrin-Yoku)



Lowers stress



Decreases blood pressure and cortisol levels



Promotes relaxation



Enhances mindfulness and psychological well-being



Improves attention, mood, and creativity



DAY 1-

- **Prakruthi Dhama** (Nature Therapy Center) : Study of Nature Science body immune system
- Herbal Plants & Terrace Gardening
- Mud bath & Ayurvedic treatments
- Student Interaction Programs
- Explore Back water walk, Ecosystems study & Continue Nature Therapy
- Get Natural Water jacuzzi bath

DAY 2-

- **BR HILLS & Wildlife :**
- Explore Tribal Village
- Nature Walk & Study
- K-Gudi Wild Safari,
- Coffee Making Factory Visits
- Herbal Plantation Visit
- Organic Farm visit & Explore
- Honey BEE Farm Study
- Biodiversity and Conservation

DAY 3-

- **Tibetan Community Living**
- Wild Safari Experience 2
- Explore the Tibetan tradition
- @Dhondeling Monastery
- Community interaction & Study
- Explore Talakadu River
- Coracle ride & Water activities
- Trips learnings & Giveaways
- Last Day winding process

Night activities : Camping, Wild life Open theatre Movies , Start Gazing, Tribal Dance , Campfire, community Living (presenting @ Village house), Games ,Survival Camp Training , Night Walk,

How we are Different than others ?

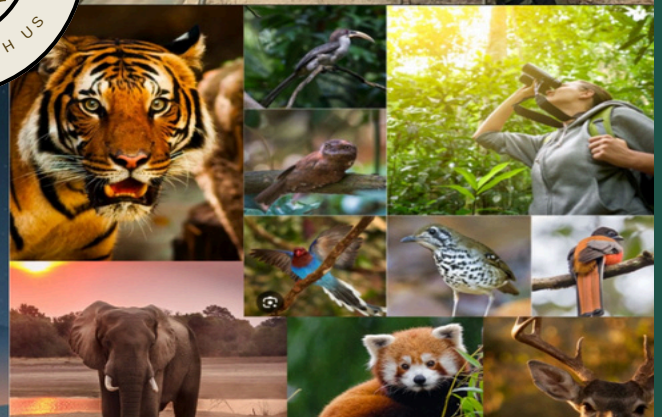


Managed Farm Land EXPO

Survival Camps Workshop

Nature Photography

START gazing Event





Wild Life Safari
Open Jeep Drive

**Shivana
Samudram**

100 KM



Night Ambiance Experience:

- *open theater wild life Movies
- *self made barbeque Activity
- *Bone fire and Story telling
- *housie games & Planning *
- Night Volley Ball/ Box Cricket
- *Tressure Hun5ng Games

Camp Faci5es :

- Meeting/ Training Rooms
- Swimming Pool
- Camping Ground
- Cottages
- Tractor/Jeep Rides

Forestry Programs:

- Nature Science programs
- Wild life Conservation
- Organic Farming
- Birds Watch & Trekking



**CAMPING &
Open Theatre Movie**



**Wild life Safari
open Jeep drives**





SAFARI PROGRAMS :Startup village & Sports Club Venue Located 2 Hrs drive from Bangalore via Kanakapura and Bandipura Road. And It's a Idle place for the Nature and Adventure Lovers , there are more the 4 types for Safari are accessible just 1 hrs drive from the venue makes connecting belt to ...

K-Gud i Safari -The Safari located in BRT Tiger Reservoir organised by GVT departments , 650/- person

Bandipura Safari- this is located connecting Road Ooty & Wayanad Des5na5ons , 650/- per person

MM h ills Safari – recently a new Safari opened in MM hills wild life (Ajjipura & PG palya) Sathe Mangala Forest - safari was conducted at Dhondeling to Hasanur Connecting belt.



How Naturopathy Promotes Long Health?



Venue :Shivana Samudram :

the Iconic place located formed twin water falls namely Gaganachukki and Barachukki water falls.

Also we can Experience the Talakadu beach side Experience with Water activities and The Somanatha Pura Monument Heritage also with vicinity of the locality recently added to world Heritage Centre list.

The Place is Blessed with Madya ranga - Sriranganatha temple, Chandramouli temple , Shimsa maramma temple formed in a island,

Place also witness Asia first electric power houses which was done during by engineer Sir M Vishweshwarai with the help of Mysore Kingdome !!

HILLS Stations Scenic Beauty : Nature will have Surprises with Wind Cloud Sunny Days on all 3 Seasons and best experience can be done Monsoon and winter seasons you can witness many surprises !!

Himavad Gopalan Hills: (80KM) at a height of 1450m India and Extensively wooded. It also highest peak in the Bandipore national P ark.

BR Hills : (40 KM) ranges from 1400m to 1800m India , well known tribal Locality around the region with exclusive drive experience and scenic points !!



WILD LIFE TOUR PROGRAMS @ DISCOVERY Village Trials



STARTUP VILLAGE CLUB : Plan A (2 D& 1N)

Venue : Startup Village Club (Shivanasamudram)

Day 1- Check-in 5me :

4 PM , Welcome drink and Introduction,
4.30 – Open jeep Drive and Sunset Walk @ Ramathirtha
6 Km u p hill drive about 40 min drive from the
campsite to Ramathirtha beVa , Briefing about the
Locations, and
1 KM Walk till the Sunset also will be identifying some
birds & Trees and With beautiful sunset from the top of
the Hills

Night : Back to Camp Site @ Shivana samudram
, Campfire Dinner, Open theatre Wild Life Movie
Experience, and Discussion STARTUP village

Day 2 Plan:

Early Morning Drive to MM hills Hanur wild Safari
starts @ 7.30 Am to 9 AM organised by Forest dept
11 am – Village exploration and Farm visit Near MM
hills, followed by the Small trek to Temples

Plan B (2 D& 2N)

Venue : Startup Village Club (Shivanasamudram)

Friday Night Check-in before 10 PM

Saturday :

Early morning Open Jeep drive Ramathirtha ,
6 Km up hill drive about 40 min drive from the
campsite to Ramathirtha beVa , Briefing about
the Loca5ons, and 1 KM Walk ,
Followed by MM hills village exploration

4.30 PM to 6 PM Safari @ Hanur MM hills

Night: Back to Camp Site @ Shivana
samudram, Campfire Dinner, Open theatre Wild
Life Movie Experience, and Discussion STARTUP
village

Sunday : A tour to BR hills , K Gudi (wild
Safari) Amrutha Bhoomi Farm land Visit (OR)
Bandipura and Himavad Gopalan hill explorations

BR Hills. Bandipur. MM Hills

- Trekking, Rapling
- Camping & Bonefire
- Off Rd Go Kart
- ATV Quad Bike
- Kayaking ,fishing,
- bananaride , Speed boat
- Open Jeep ride
- shooting, Archery
- paint ball tournament
- School Agritour
- Wild life photography
- Birds Watching & Sound recording
- Wildlife Survival events
- Ayur farm & SPA

Book your tour today

www.startupvillageclub.in

Startup Village Engagement with UNIVERSITIES:

- College Anvetiona Competitions & Ideathon/Venturathon
- Startup Village & Vanaloka Centre Of Excellence & Club Formations
- Vanaloka & Decathlon Survival Camps reality Show
- Startup Boot camps Engagements & Department Collaborations

Number Of
Cohort Event
1 +

Number Of
Investor meet
5 +

Number Of
Boot Camps
3 +

Number of
Startups
10 +

Industrial
Connect
12 +

Number Of
Pitch fests
10 +

Startup Club
membership
50 +

Number of
Network club
56 +

Grant
Accessibility
1CR

Investment &
Soft Loans
10 CR



Golf Club Members Investment Chapter:

- *Monthly 1 Pitch Fest
- *4 Startup Mentoring per month
- * 1 Startup access to Investor Meet
- * 8 Staff Holiday Stay FREE & FDP program
- *Monthly Charge 25K

Associations with:

DECATHLON

STARTUP Village INCUBATION PROGRAMS

Startup incubation stages include **application/selection, onboarding/resource access, mentorship/training, product development/market validation, funding/scaling preparation, and graduation/demo day**, fostering growth from ideation to market-ready ventures.

Managed Farm Land :

The club is owning more than 50 acre land and Education centers for diploma colleges and specialised new project of Sandal would cultivation with 100 acre area is launched recently , minimum area of investment will be 5000 square feet the tentative price structure is given in below .

OUR APPROCH TO ADDRESS THE MANAGE FARM LAND MARKET



Club formations in
Atria Universities

Association with
VANALOKA to manage
Farms & activities

Semiconductor
Entrepreneurship
Courses



How to Rise funds !!

- 1- Organize the Managed Farm land Expo @ Atria
- 2- Issue Digital Gold Bonds Token of advance & Also Collaborate with large Gold Dealers
- 3- Investment proposition gold 30 % and Land 70%

